

PERFORMANCE

Processor

Intel Core™ Ultra 7 265K, 20C (8P + 12E) / 20T, Max Turbo up to 5.5GHz, 30MB Intel® Smart Cache

AI PC Category

AI-Powered Gaming PC^[1]

NPU

Integrated Intel® AI Boost, up to 13 TOPS

Graphics

NVIDIA GeForce RTX™ 5070 12GB GDDR7

Chipset

Intel® B860 Chipset

Memory

2x 16GB UDIMM DDR5-5600

Memory Slots

Four DDR5 UDIMM slots, dual-channel capable

Max Memory^[2]

Up to 64GB DDR5-5600

Storage

1TB SSD M.2 2280 PCIe® 4.0x4 NVMe®

Max Storage Support^[3]

Up to four drives, 3x M.2 SSD + 1x open 3.5 HDD Bay • 3.5" HDD bay only for customer self upgrade • M.2 SSD up to 2TB each

Card Reader

None

Optical

None

Audio Chip

High Definition (HD) Audio, Realtek® ALC623 codec

Speakers

No speakers

Power Supply

850W 90%

DESIGN

Keyboard

None

Mouse

None

Expansion Slots

- One PCIe® 5.0 x16
- One PCIe® 3.0 x4
- Four M.2 slots (one for WLAN, three for SSDs)

Case Color

Eclipse Black (Transparent cover) + liquid with ARGB + Inner Decorate Cover

System Lighting

Legion Logo Lighting

Chassis

Transparent Cover + Inner Decorate Cover

Cooler

PCH Heatsink + 3x SSD Heatsink + VRM Heatsink + 200W liquid 2x 120MM-Fan with ARGB light

System Fan

1x Rear with ARGB + 2x Bottom with ARGB

Pen

Pen Not Supported

Form Factor

Tower (30L)

Dimensions (WxDxH)

211 x 490.4 x 414 mm (8.3 x 19.3 x 16.29 inches)

Weight^[4]

Around 15 kg (33.06 lbs)

CONNECTIVITY

WLAN + Bluetooth

Wi-Fi® 7, 802.11be 2x2 + BT5.4^[5]

WWAN

WWAN Not Supported

Ethernet

2.5GbE RTL8125BG

Top Ports

- 1x USB-C® (USB 5Gbps / USB 3.2 Gen 1)
- 1x USB-A (USB 5Gbps / USB 3.2 Gen 1)
- 1x headphone / microphone combo jack (3.5mm)

Rear Ports^[6]

- 1x USB-C® (USB 10Gbps / USB 3.2 Gen 2)
- 2x USB-A (USB 5Gbps / USB 3.2 Gen 1)
- 4x USB-A (Hi-Speed USB / USB 2.0)
- 1x Ethernet (2.5GbE RJ-45)
- 1x power connector
- 3x audio out (5.1 channel)

SECURITY & PRIVACY

Security Chip

Firmware TPM 2.0 integrated in chipset

SERVICE

Base Warranty

1-year, Courier or Carry-in

Included Upgrade

None

CERTIFICATIONS

Green Certifications

RoHS compliant

SOFTWARE

Operating System

Windows® 11 Home, English

Bundled Software

None

MODEL

TopSeller

: No

EAN / UPC / JAN: 199274049416

Announce Date: 2025-11-27

End of Support : 2031-02-17



Product image is a sample, it may not match the real color of this model
Note:

[1] AI-Powered Gaming PCs feature Lenovo AI Engine+ and NVIDIA GeForce RTX GPUs to handle AI-driven tasks and deliver exceptional gaming performance.

[2] The max memory is based on the test results with current Lenovo memory offerings.

[3] The max capacity of each disk type is based on the test results with current Lenovo storage offerings.

[4] The system weight is approximate and based on results in Lenovo lab, which varies depending on the source of component, variance of the distribution of each component, and manufacturing process. It may not be the exact weight for each specific model.

[5] The bandwidth of WiFi 7 adapter is 160 MHz.

[6] For video ports on discrete graphics, please see [graphics section](#)

• Please refer to the official [Lenovo store website](#) or contact a local Lenovo sales representative or authorized business partner for current inventory and purchase options.

• Lenovo reserves the right to change specifications without notice.

Premium Care - Advanced Support from Real People. Real Fast.



REAL PERSON

Choose how you want to reach us - through the phone, chat or email - our expert technicians will take care of you.



REAL FAST

Highly trained technicians will provide you real-time solutions, whatever the issue, on your first contact. If needed, our team will schedule an onsite visit for the next business day.



HASSLE FREE

'Getting started' and 'how-to' assistance for hardware and software. Easy solutions that are simple to reach - that's how Premium Care delivers you the ideal support experience.



PC HEALTH CHECK

Free annual PC Health Check that allows our experts to spot issues before you do so they can resolve them quickly and help you avoid PC problems.

Accidental Damage Protection - Protection of your PC from the unexpected.

Experience shows that a significant portion of devices may be damaged (and not covered under warranty) in the first three years. Lenovo's Accidental Damage Protection service covers accidents beyond the system warranty such as drops, spills, bumps and even electrical surges. Make sure your new device has maximum protection, avoid unplanned costs and get peace of mind.

Base Warranty - Included with the systems you purchase, default 1- or 3-year coverage window.

Warranty Extensions & Upgrades - Service and protection that's right for your circumstances.

- Pick Up & Return Courier
- Onsite Support
- Technician Installed Customer
- Replaceable Unit Service
- International Warranty Upgrade

Lenovo may not offer the products, services or features discussed in this document in all regions. Lenovo may withdraw an offering at any time. Consult your local representative for information on offerings available in your area. Lenovo reserves the right to change specifications or other product information without notice. Lenovo is not responsible for photographic or typographical errors. Lenovo provides this publication "as is" without warranty of any kind, either express or implied, including the implied warranties of merchantability or fitness for a particular purpose.

Recommended Accessories

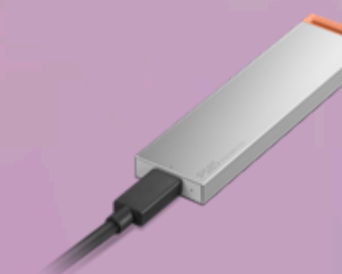
 United Kingdom



Lenovo 350 Bluetooth Silent Mouse (Fan Edition - Argentina) GY51U71763



Lenovo Analog In-Ear Headphones Gen II Bulk Package (20pcs) 4XD1T54899



Lenovo PS8S Portable SSD 4TB 4XB1T91892

Please click [here](#) to view the full list of accessories.

Lenovo

PSREF
Product Specifications
Reference