

PERFORMANCE**Processor**

AMD Ryzen™ 5 7533HS (6C / 12T, 3.3 / 4.4GHz, 3MB L2 / 16MB L3)

Graphics

Integrated AMD Radeon™ 660M Graphics

Chipset

AMD SoC Platform

Memory

1x 16GB SODIMM DDR5-4800

Memory Slots

Two DDR5 SODIMM slots, dual-channel capable

Max Memory^[1]

Up to 16GB DDR5-4800

Storage

512GB SSD M.2 2280 PCIe® 4.0x4 NVMe®

Optane Memory

None

Max Storage Support^[2]

One drive, up to 1TB M.2 SSD

Card Reader

No Card Reader

Optical

None

Audio Chip

High Definition (HD) Audio, Realtek® ALC233-CG codec

Speakers

3Wx2, HARMAN

Camera

5.0MP + IR

Microphone

Dual Microphone

Power Supply

90W 89% Adapter

DESIGN**Display^[3]**

23.8" FHD (1920x1080) IPS Anti-glare 250nits, 100Hz, 99% sRGB, hardware low blue light, 3-side borderless, non-touch

Touchscreen

None

Keyboard

Wireless EOS Keyboard, Luna Grey, English (UK)

Mouse

Wireless EOS Mouse, Luna Grey

Expansion Slots

Two M.2 slots (one for WLAN, one for SSD)

Case Color

Luna Grey

Stand

AIO Stand

Wireless Charger

No Wireless Charger

Pen

Pen Not Supported

Form Factor

AIO (24 inches)

Dimensions (WxDxH)^[4]

540 x 192 x 431 mm (21.25 x 7.56 x 16.97 inches)

Weight^[5]

Around 6.0 kg (13.23 lbs)

CONNECTIVITY**WLAN + Bluetooth**

Wi-Fi® 6, 802.11ax 2x2 + BT5.2

WWAN

WWAN Not Supported

Ethernet

Integrated 100/1000M

Rear Ports

- 1x USB-A (USB 10Gbps / USB 3.2 Gen 2)
- 2x USB-A (Hi-Speed USB / USB 2.0)
- 1x HDMI®-in 1.4
- 1x HDMI®-out 2.1 TMDS
- 1x Ethernet (RJ-45)
- 1x power connector

Left Ports

- 1x USB-C® (USB 10Gbps / USB 3.2 Gen 2), data transfer only
- 1x headphone / microphone combo jack (3.5mm)

SECURITY & PRIVACY**Security Chip**

Firmware TPM 2.0 integrated in SoC

SERVICE**Base Warranty**

1-year, Courier or Carry-in

Included Upgrade

None

CERTIFICATIONS**Green Certifications**

- ENERGY STAR® 8.0
- ErP Lot 3/7
- GREENGUARD®
- RoHS / WEEE / REACH

Other Certifications

- TÜV Rheinland® Flicker Free
- TÜV Rheinland® Low Blue Light
- TÜV Rheinland® Ultra Low Noise

SOFTWARE**Operating System**

Windows® 11 Home, English

Bundled Software

None

MODEL

TopSeller : No

EAN / UPC / JAN: 199274077297

Announce Date: 2025-11-28

End of Support : 2030-09-30



AMD

Product image is a sample, it may not match the real color of this model
Note:

[1] The max memory is based on the test results with current Lenovo memory offerings.

[2] The max capacity of each disk type is based on the test results with current Lenovo storage offerings.

[3] IPS (in-plane switching) technology may refer to IPS, PLS, ADS, AHVA, AAS.

[4] The system dimensions may vary depending on configurations.

[5] The system weight is approximate and based on results in Lenovo lab, which varies depending on the source of component, variance of the distribution of each component, and manufacturing process. It may not be the exact weight for each specific model.

- Please refer to the official [Lenovo store website](#) or contact a local Lenovo sales representative or authorized business partner for current inventory and purchase options.

- Lenovo reserves the right to change specifications without notice.

Premium Care - Advanced Support from Real People. Real Fast.



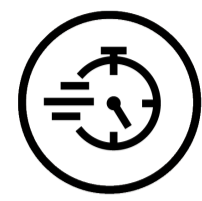
REAL PERSON

Choose how you want to reach us - through the phone, chat or email - our expert technicians will take care of you.



HASSLE FREE

'Getting started' and 'how-to' assistance for hardware and software. Easy solutions that are simple to reach - that's how Premium Care delivers you the ideal support experience.



REAL FAST

Highly trained technicians will provide you real-time solutions, whatever the issue, on your first contact. If needed, our team will schedule an onsite visit for the next business day.



PC HEALTH CHECK

Free annual PC Health Check that allows our experts to spot issues before you do so they can resolve them quickly and help you avoid PC problems.

Accidental Damage Protection - Protection of your PC from the unexpected.

Experience shows that a significant portion of devices may be damaged (and not covered under warranty) in the first three years. Lenovo's Accidental Damage Protection service covers accidents beyond the system warranty such as drops, spills, bumps and even electrical surges. Make sure your new device has maximum protection, avoid unplanned costs and get peace of mind.

Base Warranty - Included with the systems you purchase, default 1- or 3-year coverage window.

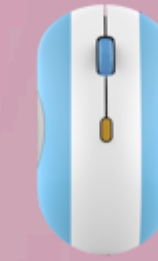
Warranty Extensions & Upgrades - Service and protection that's right for your circumstances.

- Pick Up & Return Courier
- Onsite Support
- Technician Installed Customer
- Replaceable Unit Service
- International Warranty Upgrade

Lenovo may not offer the products, services or features discussed in this document in all regions. Lenovo may withdraw an offering at any time. Consult your local representative for information on offerings available in your area. Lenovo reserves the right to change specifications or other product information without notice. Lenovo is not responsible for photographic or typographical errors. Lenovo provides this publication "as is" without warranty of any kind, either express or implied, including the implied warranties of merchantability or fitness for a particular purpose.

Recommended Accessories

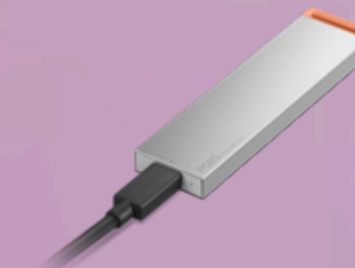
 United Kingdom



Lenovo 350 Bluetooth Silent Mouse (Fan Edition - Argentina) GY51U71763



Lenovo Analog In-Ear Headphones Gen II Bulk Package (20pcs) 4XD1T54899



Lenovo PS8S Portable SSD 4TB 4XB1T91892

Please click [here](#) to view the full list of accessories.

Lenovo

PSREF

Product Specifications
Reference