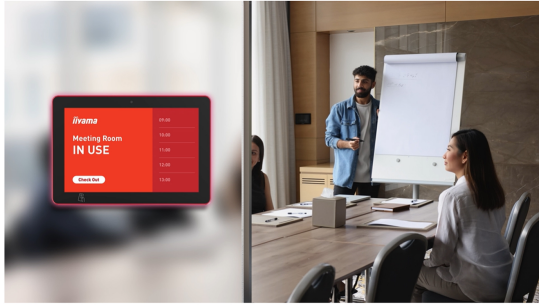


**TOUCHSCREENS****INFORMATION****10.1" PCAP 10pt touch screen  
with Android, Power over  
Ethernet Technology, NFC/RFID  
reader and a RGB LED bar  
around the screen**

The ProLite TW1025LASC-B3PNR touch panel PC is a perfect choice for high-use environments such as booking rooms, information desks or other corporate and hospitality applications. The Optical Bonded Projective Capacitive (PCAP) 10-point touch technology ensures a seamless and accurate touch response and a lower light reflection, in addition, the display is protected against humidity and potential moisture development. Thanks to the pre-installed Android 13 operating system, it is possible to easily customize the monitor by installing applications directly to it. The Power over Ethernet technology (POE) allows to provide both data connection and power by a single cable, simplifying all installations.

Thanks to the NFC/RFID reader, the touch panel PC allows to communicate wirelessly with enabled devices or tags within close proximity and the RGB Led bar will clearly and intuitively indicate the availability status of the room. Additionally, it integrates effortlessly with [iiSignage<sup>2</sup>](#), Iiyama's Content Management System (CMS), giving you full control over your messages and advertising, in landscape portrait and face-up position. Together with the built-in 5 megapixel camera, microphone and speakers it offers limitless, interactive installation possibilities.



## RGB Led bar

The RGB Led bar will clearly and intuitively indicate the room's availability status and can display a wide range of colors.

## NFC & RFID reader

Thanks to the NFC/RFID reader, the touch panel PC allows to communicate wirelessly with enabled devices or tags within close proximity.



## Connectivity

The RJ45 (LAN) connector supporting Power over Ethernet technology (POE) allows to provide both data connection and power by a single cable, which simplifies installation in areas where many cables would interfere with the environment.

## Android OS

Thanks to Android OS, you can easily customize the display to your needs by installing applications directly to it.

## SPECIFICATION

### 01 DISPLAY CHARACTERISTICS

<b>Design</b>	Edge to edge glass
<b>Diagonal</b>	10.1", 25.5cm
<b>Panel</b>	IPS Panel Technology, LED
<b>Native resolution</b>	1280 x 800 (1 megapixel HD)
<b>Aspect ratio</b>	16:10
<b>Panel brightness</b>	450 cd/m <sup>2</sup>
<b>Brightness</b>	390 cd/m <sup>2</sup> with touch
<b>Light transmittance</b>	86%
<b>Static contrast</b>	1000:1 with touch
<b>Response time (GTG)</b>	25ms
<b>Viewing zone</b>	horizontal/vertical: 160°/160°, right/left: 80°/80°, up/down: 80°/80°
<b>Colour support</b>	16.7mln 8bit
<b>Viewable area W x H</b>	216.6 x 135.4mm, 8.5 x 5.3"
<b>Pixel pitch</b>	0.1692mm
<b>Bezel colour and finish</b>	black, matte

### 02 TOUCH

<b>Touch technology</b>	projective capacitive
<b>Touch points</b>	10 (HID, only with supported OS)
<b>Touch method</b>	finger, glove (latex), capacitive stylus
<b>Touch interface</b>	USB

### 03 INTERFACES / CONNECTORS / CONTROLS

<b>Audio output</b>	Mini jack x1 Speakers 2 x 2W
<b>USB ports</b>	x3 (1x v. 3.2 (Gen 1, 5Gbit; DC5V, 900mA), 1x 2.0 (DC5V, 500mA), 1 x Mini with OTG (DC5V, 500mA))
<b>RJ45 (LAN)</b>	x1 (PoE - IEEE802.3af/15.4W)
<b>Microphone</b>	x1

### 04 FEATURES

<b>Integrated software</b>	Android 13
<b>SOC</b>	Rockchip RK3568 Quad-core A55*4
<b>GPU</b>	ARM G52 2EE
<b>Storage</b>	32GB eMMC
<b>Memory</b>	4GB DDR4
<b>WiFi</b>	IEEE802.11b/g/n/a/ac

<b>Bluetooth</b>	5.2
<b>Hardware</b>	NFC (NXP PN7160), RFID (125kHz, 9600kbit/s)
<b>Extra</b>	auto-rotation, webcam (5 megapixel), SD card slot, anti-fingerprint coating, anti-glare coating, PoE, NFC/RFID reader, RGB Led lightbar, cable cover & wall mount in one
<b>Max. non-stop operating time</b>	24/7
<b>Glass thickness</b>	1.85mm
<b>Glass hardness</b>	6H

## 05 GENERAL

<b>Control buttons</b>	Power switch
<b>Applications</b>	Applications: lock application, manage restart time, manage power on/off time, calculator, calendar, camera, Chrome, alarm/clock/timer/stopwatch, manage files & folders, organize albums, Gmail, Google, iiSignage <sup>2</sup> , led light bar, play audio files, Play store, system preferences, sound recorder, play video

## 06 MECHANICAL

<b>Orientation</b>	landscape, portrait, face-up
<b>VESA mounting</b>	75 x 75mm
<b>Cable management system</b>	yes

## 07 ACCESSORIES INCLUDED

<b>Guides</b>	quick start guide, safety guide
<b>Other</b>	AC adapter, interchangeable plugs (EU/UK), cable cover/wall mount
<b>Cable cover</b>	yes

## 08 POWER MANAGEMENT

<b>Power supply unit</b>	external
<b>Power supply</b>	DC 12 V
<b>Power usage</b>	10W typical, 0.5W stand by, 0.3W off mode

## 09 SUSTAINABILITY

<b>Regulations</b>	CE, EAC, RoHS support, ErP, WEEE, REACH, UKCA
<b>REACH SVHC</b>	above 0.1%: Lead

## 10 DIMENSIONS / WEIGHT

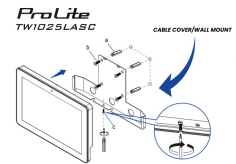
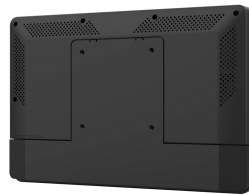
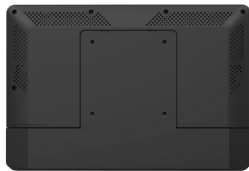
<b>Product dimensions W x H x D</b>	259.5 x 178.5 x 28mm
<b>Box dimensions W x H x D</b>	363 x 225 x 65mm
<b>Weight (without box)</b>	1.1kg

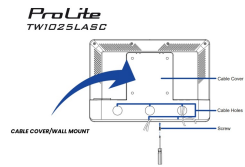
**Weight (without stand)**

1.6kg

**EAN code** 4948570127146

---





All trademarks and registered trademarks acknowledged. E & O E. Specification subject to change without notice. All LCD's comply with ISO-9241-307:2008 in connection with pixel defects. © IYAMA CORPORATION. ALL RIGHTS RESERVED