

## Wing + Card Reader Mount

### Assembly Instructions

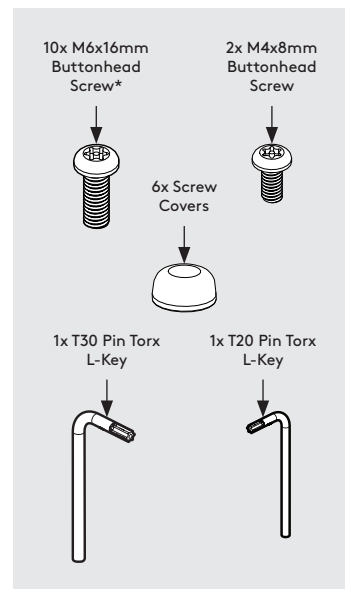
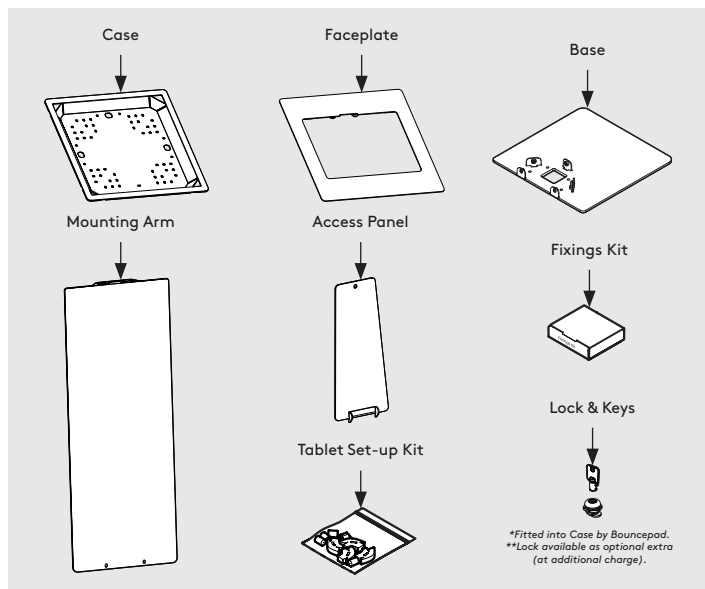
#### Tools Required:

- All tools provided

Sheet Code: BP-IM-127\_REV0

Release Date: 01/08/2025

Copyright 2025 SpotSpot Ltd. (T/A Bouncepad) all rights reserved. Confidential, no part of this publication may be reproduced or transmitted in any form without the written permission of the copyright holder.



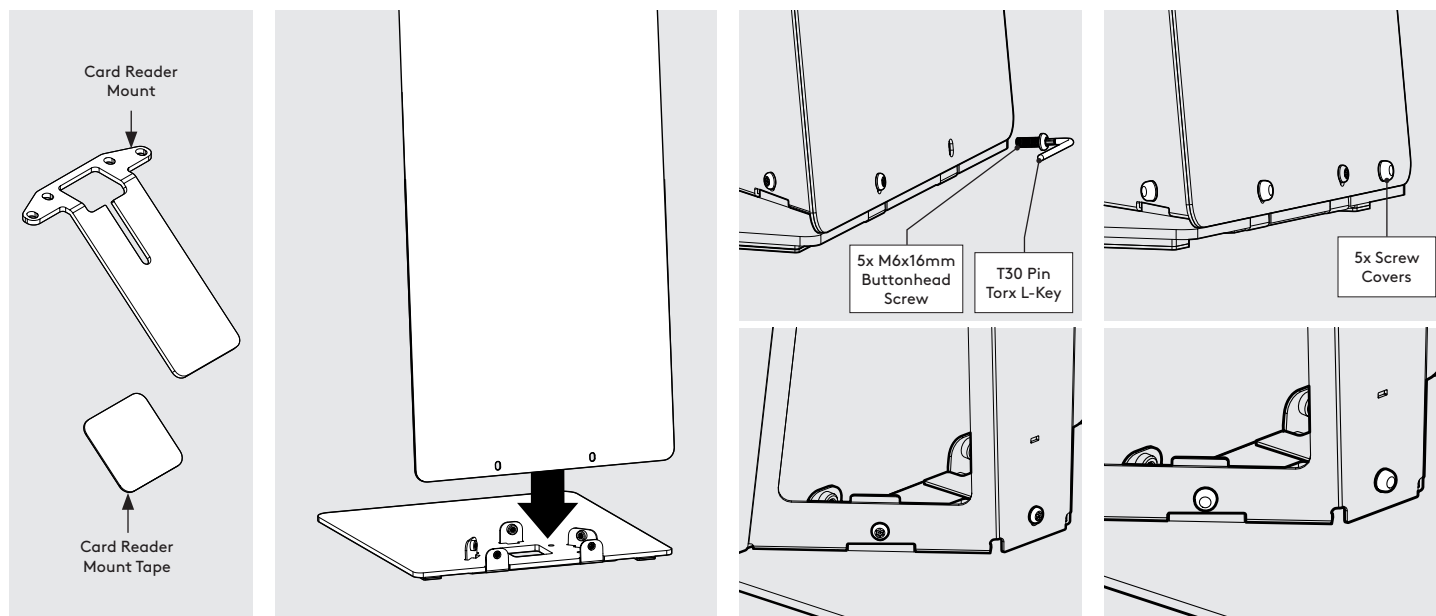
#### In the Box (Wing)

Large Shipping Box Contains: 'Mounting Arm' Only  
Small Shipping Box Contains: 'Faceplate', 'Case', 'Access Panel', 'Base', 'Card Reader Mount', 'Card Reader Mount Tape', 'Tablet Set-up Kit', 'Fixings Kit' & 'Lock & Keys\*\*'

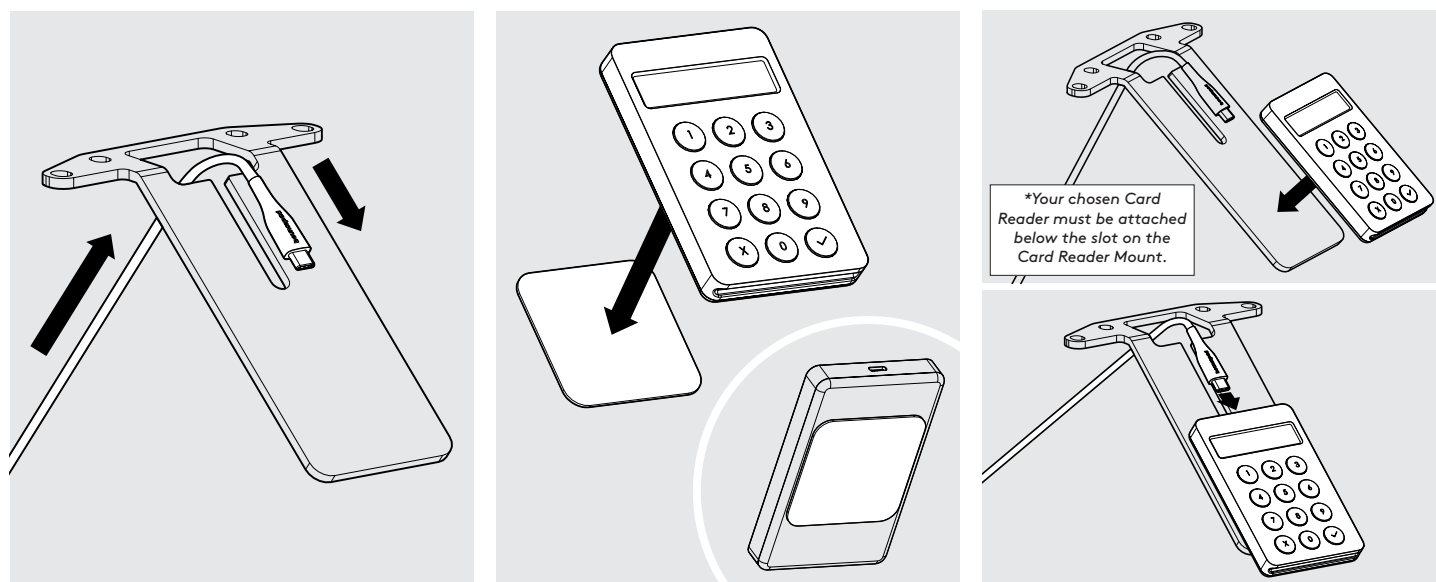


#### Fixings List (Wing)

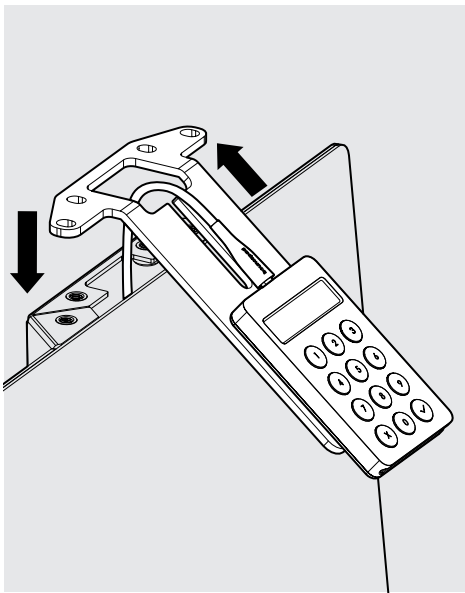
Due to the modular nature of our product range you may receive additional fixings in the fixings kit. \* Previous models may have been supplied with 10mm.



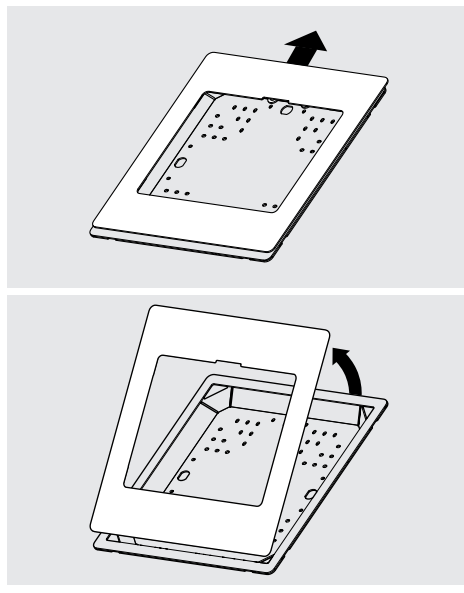
- 1** Locate the Mounting Arm onto the Base.
- 2** Secure the Mounting Arm to the Base as shown.
- 3** Attach 5x Screw Covers.



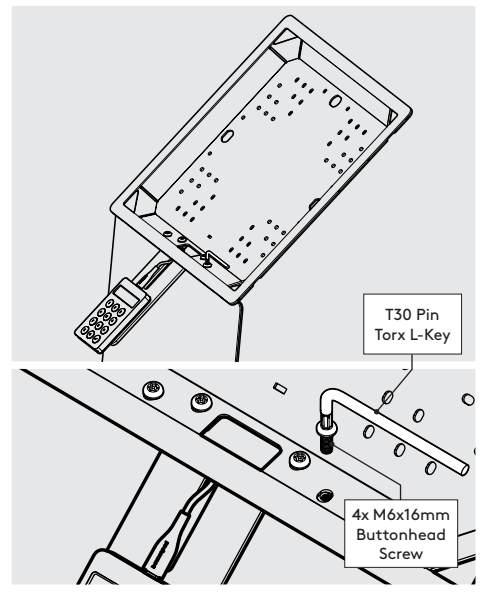
- 4** Feed the Card Reader's Power Cable through the Card Reader Mount.
- 5** Remove 1x Adhesive Backing on the Card Reader Tape & attach to your Card Reader.
- 6** Remove the other 1x Adhesive Backing & attach your Card Reader to the Card Reader Mount. Connect the Card Reader's Power Cable.



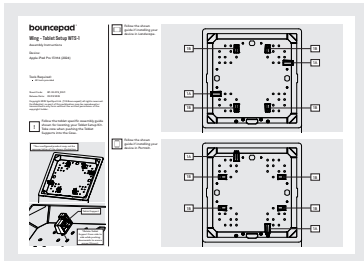
**7** Feed the Card Reader's Power Cable into the Mounting Arm. Remove any slack along the Card Reader Mount.



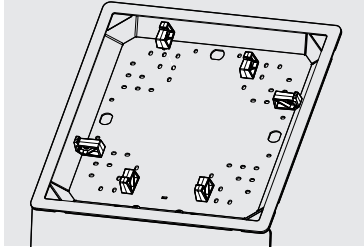
**8** Remove the Faceplate from the Case by pushing upwards & pivoting.



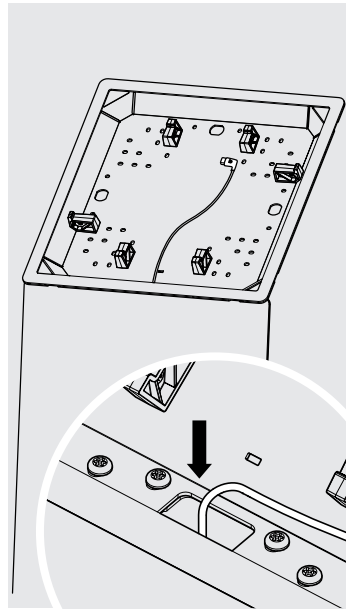
**9** Attach the Case to the Mounting Arm & Card Reader Mount. Ensure the Case is aligned.



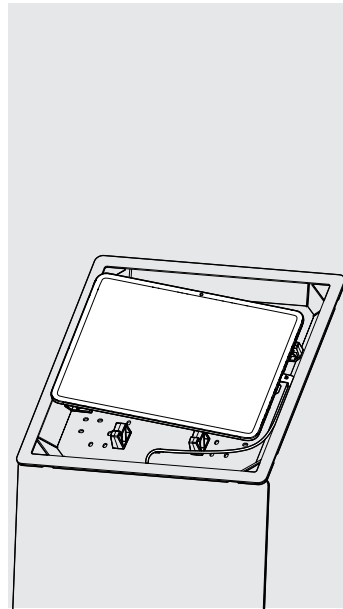
\*The Tablet Set-up Kit Instructions must be followed as assembly may differ to the image.



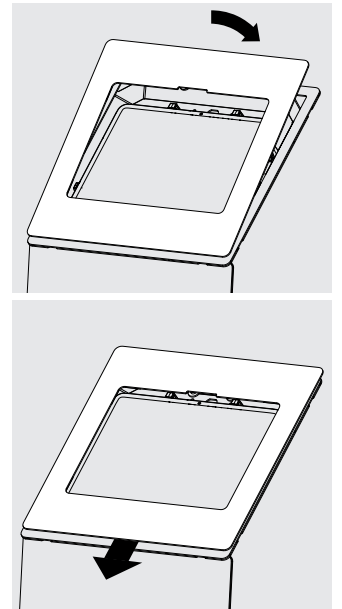
**10** Select your Tablet Set-up Kit Instructions. Install the Tablet Set-up Kit. Each kit is specific per Tablet & Case.



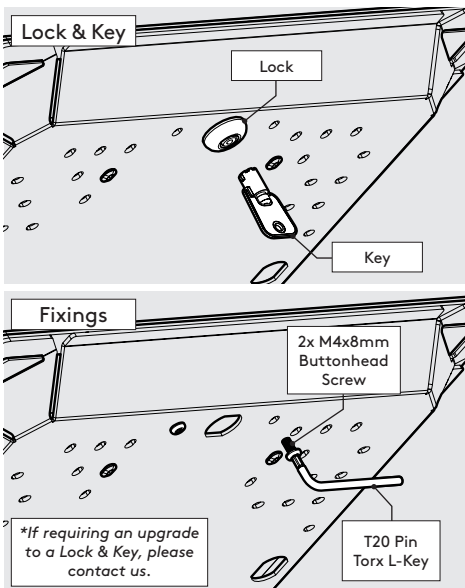
**11** Feed the Tablet's Power Cable through the Case & Mounting Arm.



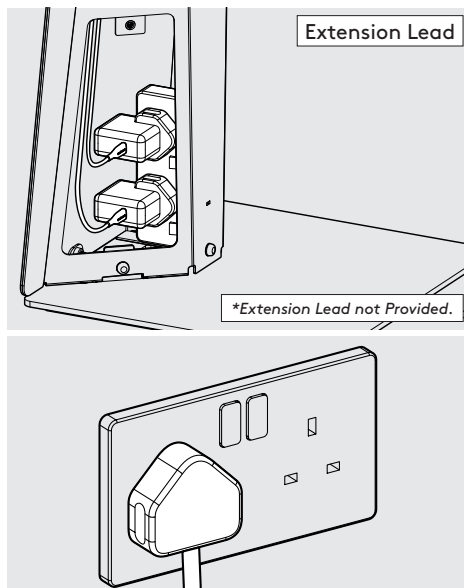
**12** Place the Tablet into the Case & connect the Tablet's Power Cable.



**13** Locate the Faceplate to the Case by pivoting & pushing downwards.



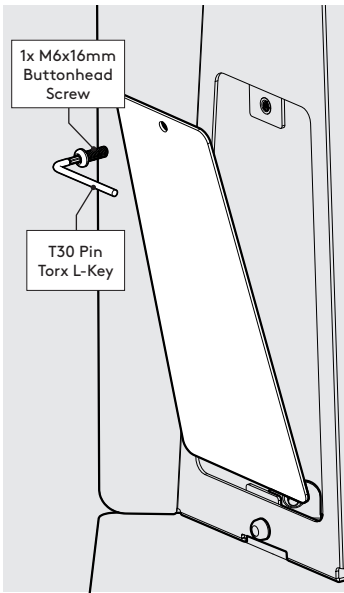
**14** Secure the Faceplate with your chosen locking method.



**15.1** Connect the Power Cables to an Extension Lead & then connect to a Power Source.



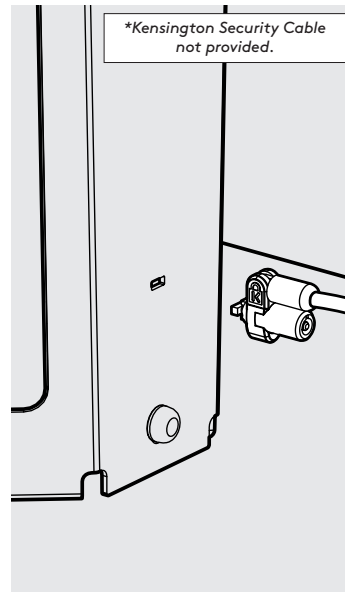
**15.2** Connect the Power Cables to a Power Bank



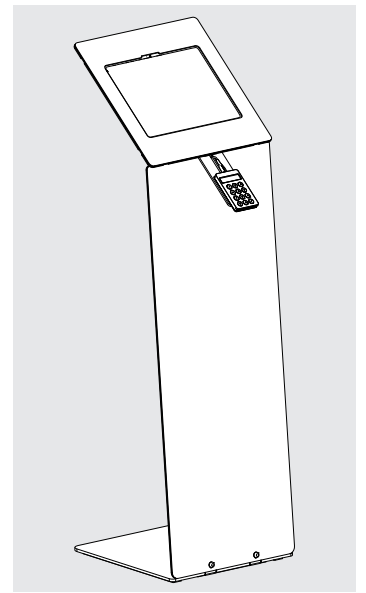
**16** Locate and secure the Access Panel to the Mounting Arm.



**17** Attach 1x Screw Cover.



**18** For added security, install a Kensington Security Cable.



**19** Installation is now complete.