

Dismantling information

The document is intended for use by end-of-life recyclers or treatment facilities. It provides the basic instructions for the disassembly of LG products to remove components and materials requiring selective treatment.

Product Identification

Type of Product	Smart Monitor
Model name	27U731SA

Displays must be stored in accordance with the requirements stipulated in Appendix VIII (1) or (2) of Directive 2012/19/EU and must, amongst other things, be stored in a weatherproof manner. Containers with covers must be used when storing and transporting the Displays.

Contents

- 1. Materials and components for Selective Treatment**
- 2. Tools Required**
- 3. Product Disassembly Process**
- 4. Disassembly of External enclosure**

1. Materials and components for Selective Treatment


Displays may contain hazardous substances like Pb and BFRs which are covered by exemptions under the RoHS directive. However, the majority is present in the PCB assembly. In order to reduce emissions as much as possible, a complete disposal of the old appliance is required. This treatment may only be performed in authorized handling plants.

Materials and components	Notes	Included	Location
Printed Circuit Boards (PCB) or Printed Circuit Assemblies (PCA)	With a surface greater than 10 square cm	○	
Batteries	For Remote control	○	
	Internal batteries	-	
Mercury containing components	display backlights	-	
Liquid Crystal Displays (LCD) with a surface greater than 100 square cm	Includes background illuminated displays with gas discharge lamps	○	
Capacitors / condensers (Containing PCB / PCT)		-	
Electrolytic Capacitors / Condensers measuring greater than 2.5 cm in diameter or height		○	
External electric cables cords	Power cord	○	
	Signal cable	○	
Gas Discharge Lamps		-	
Plastics containing Brominated Flame Retardants		-	
Components and waste containing asbestos		-	
Components, parts and materials containing refractory ceramic fibers		-	
Components, parts and materials containing radioactive substances		-	

2. Tools Required



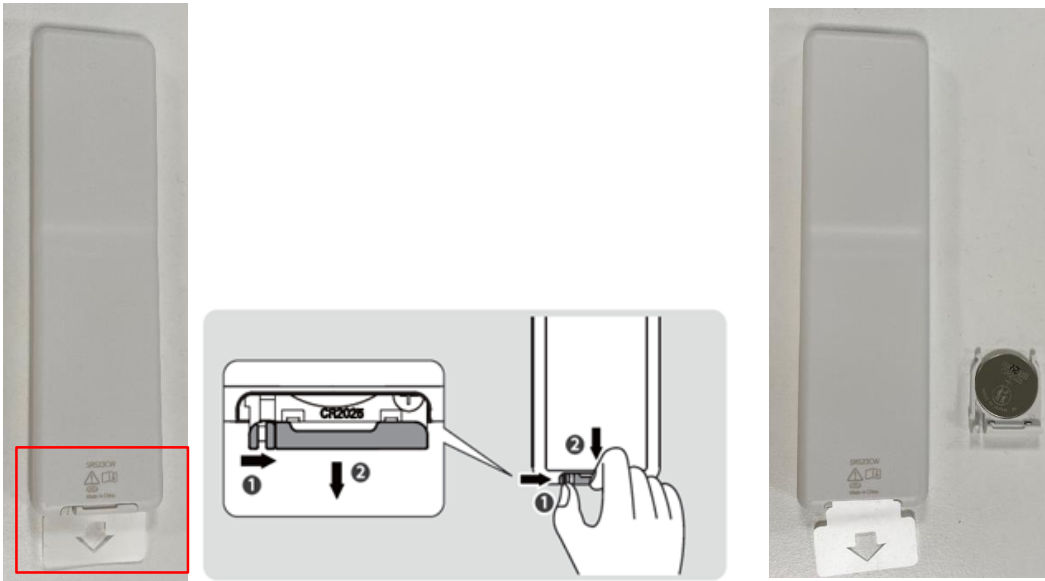
List the type that would typically be used to disassemble the product to a point where components and materials requiring selective treatment can be removed.

Tool Description	Tool information
Screw driver	
Gloves	
Plastic Hera Jig	

3. Product Disassembly Process

1. Batteries

Batteries can easily be removed from the remote control once the back cover of the remote control has been removed.



3. Product Disassembly Process

2. PCBs and LCD Module

Remove M3 screw 1EA with screw driver



Insert Hera Jig at Right Bottom Corner point and disassemble Back Cover Assy (CCW direction from Starting Point)

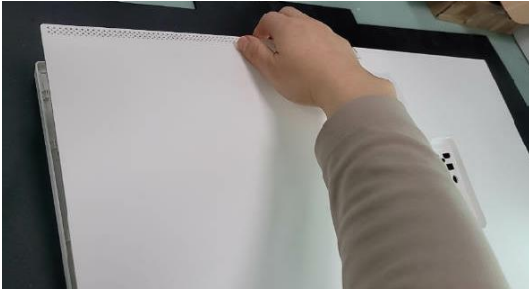


<Starting Point>

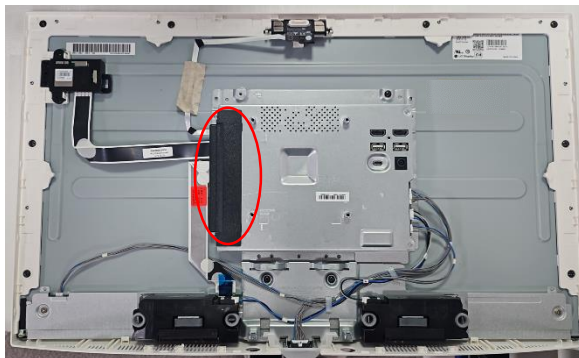
3. Product Disassembly Process

2. PCBs and LCD Module

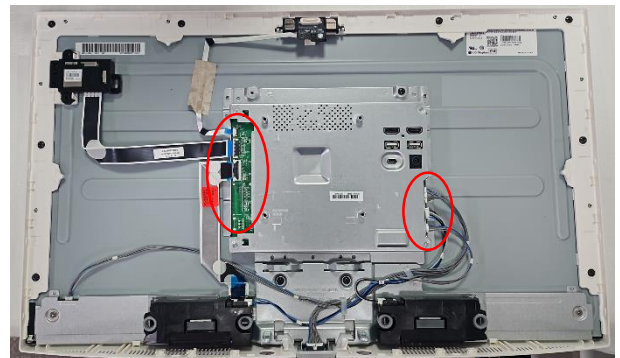
Remove Back Cover Assy by hand



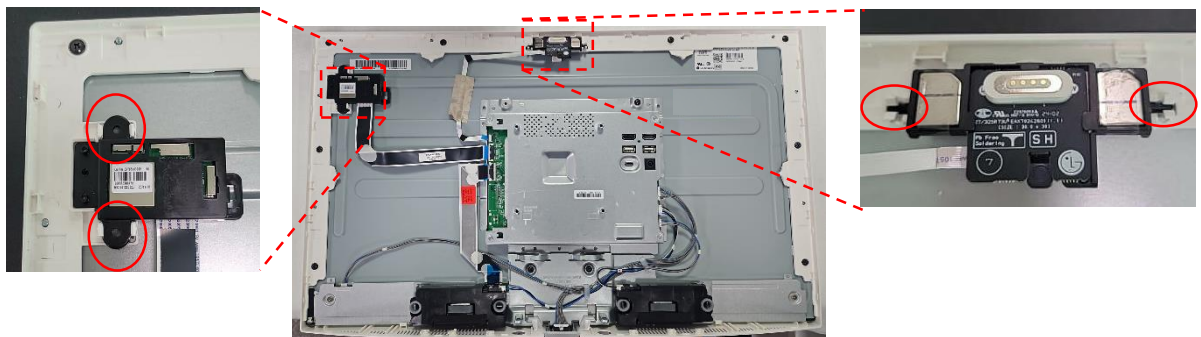
Remove side cover by hand



Disassemble all connector



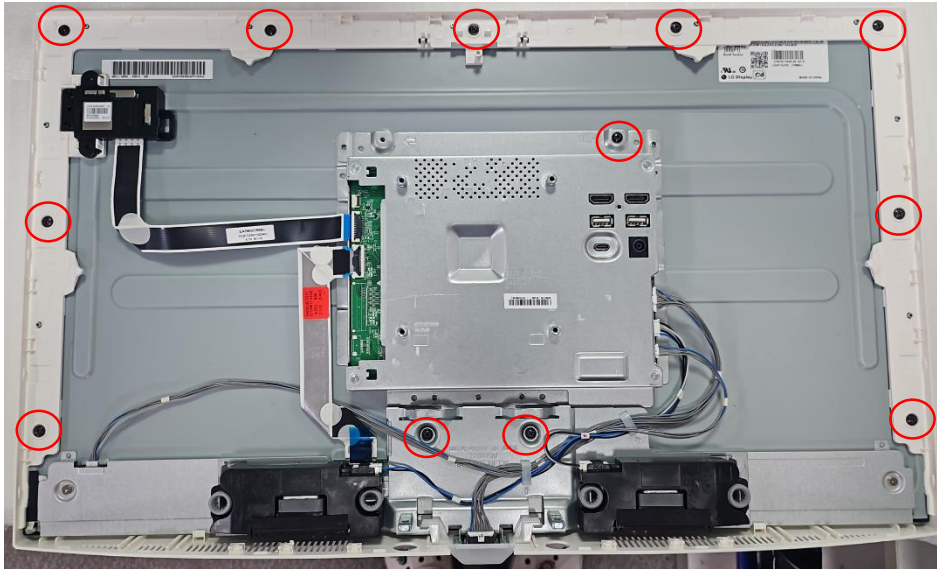
Disassemble Latch to get WiFi PCB and Pogo PCB



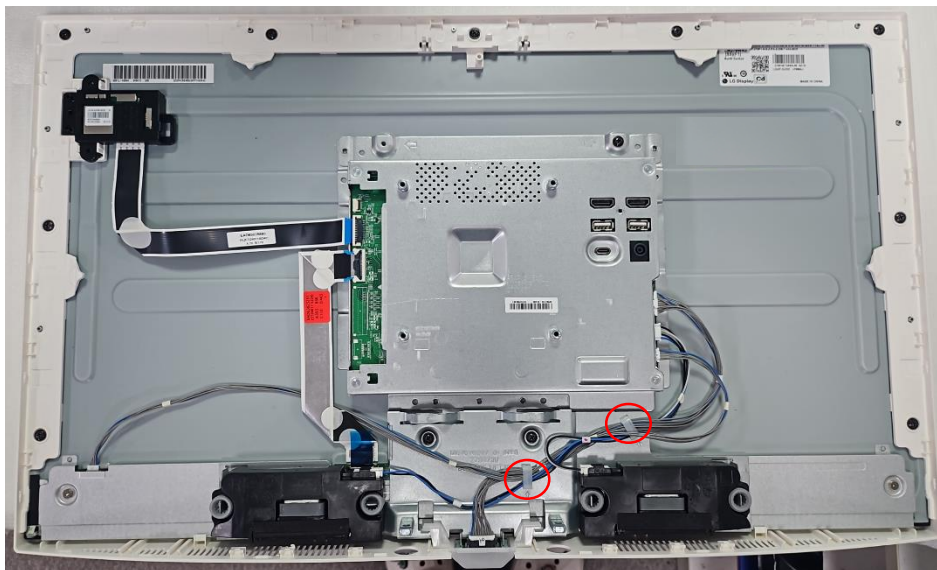
3. Product Disassembly Process

2. PCBs and LCD Module

Remove M3 screw 12EA by screw driver



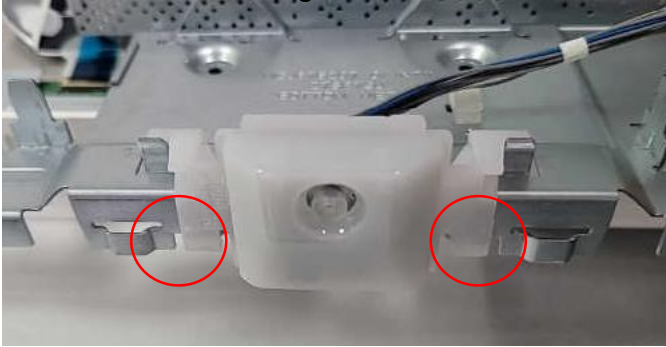
Disassembly All Cable at Holder



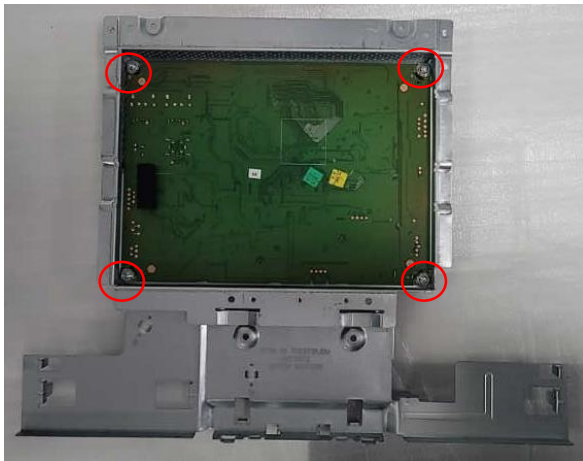
3. Product Disassembly Process

2. PCBs and LCD Module

Disassemble Latch to get IR PCB



Remove M3 screw 4EA by screw driver to get main PCB



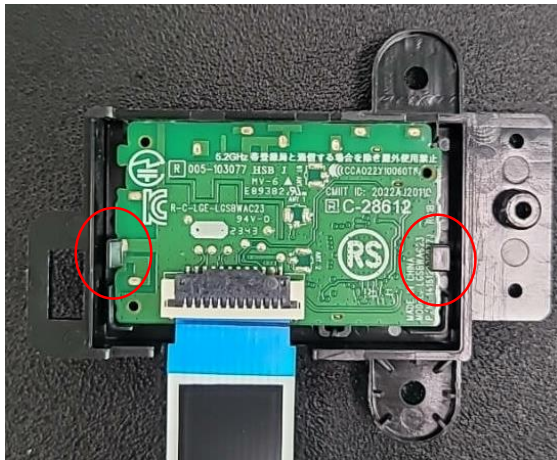
3. Product Disassembly Process

2. PCBs and LCD Module

Main PCB



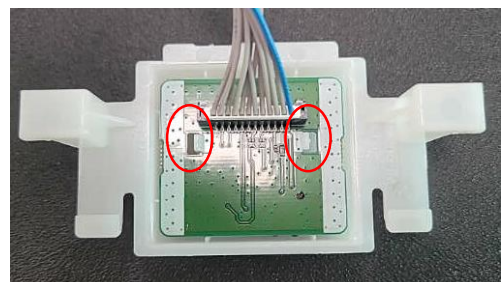
WiFi PCB (Latch 2ea)



Pogo PCB (Latch 1ea)



IR PCB (Latch 2ea)



3. Product Disassembly Process

2. PCBs and LCD Module

Module after all items being removed



3. Product Disassembly Process

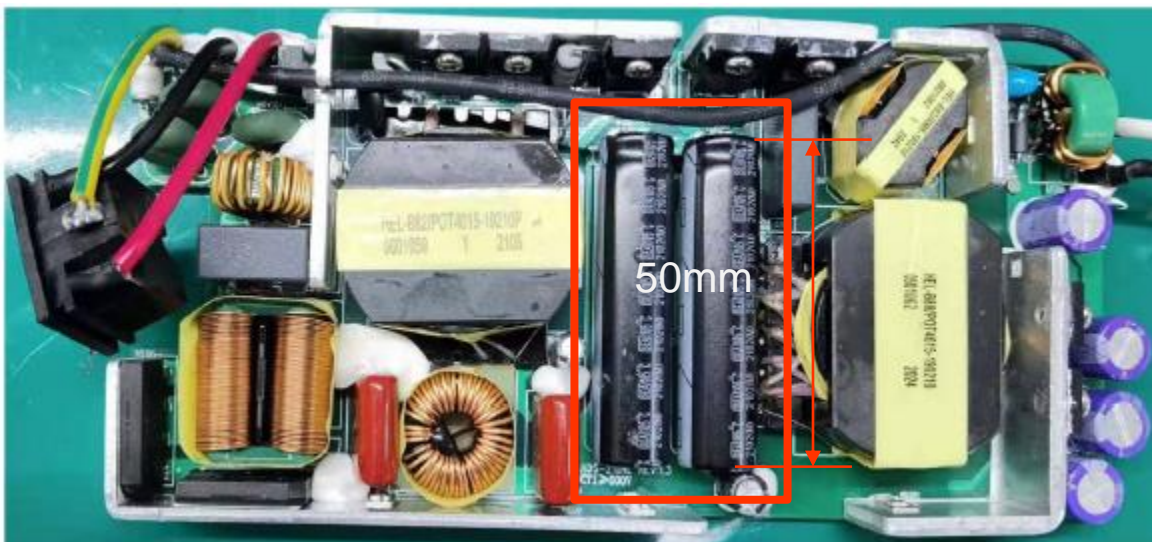
3. Power cord and signal cables

A Power cord plugged into the back of the display can easily be removed by hand or cables are provided as de-attached from the product



4. Capacitors > 25 mm

Capacitors > 25 mm are located in the power supply units and can be removed by nipper

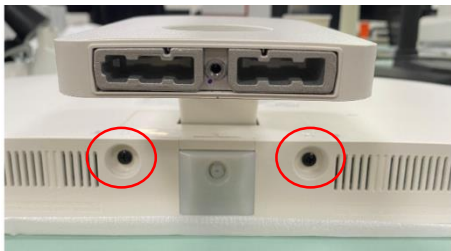


4. Disassembly of External enclosure

Remove the screw(1ea) on the stand base by screw driver



Remove the screw(2EA) and pull up the stand body



Remove the screw(1EA)



4. Disassembly of External enclosure

Insert Hera Jig at Right Bottom Corner point and disassemble Back Cover Assy (CCW direction from Starting Point)



Remove Back Cover Assy by hand

<Starting Point>

