

Dismantling information

The document is intended for use by end-of-life recyclers or treatment facilities. It provides the basic instructions for the disassembly of LG products to remove components and materials requiring selective treatment.

Product Identification

Type of Product	Monitor
Model name	34U601SA This document covers derivation model which has same conceptual design and dismantling process

Displays must be stored in accordance with the requirements stipulated in Appendix VI (1) or (2) of Directive 2012/19/EU and must, amongst other things, be stored in a weatherproof manner. Containers with covers must be used when storing and transporting the Displays.

Contents




- 1. Materials and components for Selective Treatment**
- 2. Tools Required**
- 3. Product Disassembly Process**
- 4. Disassembly of External enclosure**

1. Materials and components for Selective Treatment

Materials and components	Notes	Included	Remark
Printed Circuit Boards (PCB) or Printed Circuit Assemblies (PCA)		O	
Batteries	For Remote control	O	
	Internal batteries	-	
Mercury containing components	display backlights	-	
Liquid Crystal Displays (LCD) with a surface greater than 100 square cm	Includes background illuminated displays with gas discharge lamps	O	
Capacitors / condensers (Containing PCB / PCT)		-	
Electrolytic Capacitors / Condensers measuring greater than 2.5 cm in diameter or height		O	
External electric cables cords	Power cord	-	
	Signal cable	O	
Gas Discharge Lamps		-	
Plastics containing Brominated Flame Retardants	Plastic of speaker, cable connector, fan (depend on model)	X	
Components and waste containing asbestos		-	
Components, parts and materials containing refractory ceramic fibers		-	
Components, parts and materials containing radioactive substances		-	

2. Tools Required

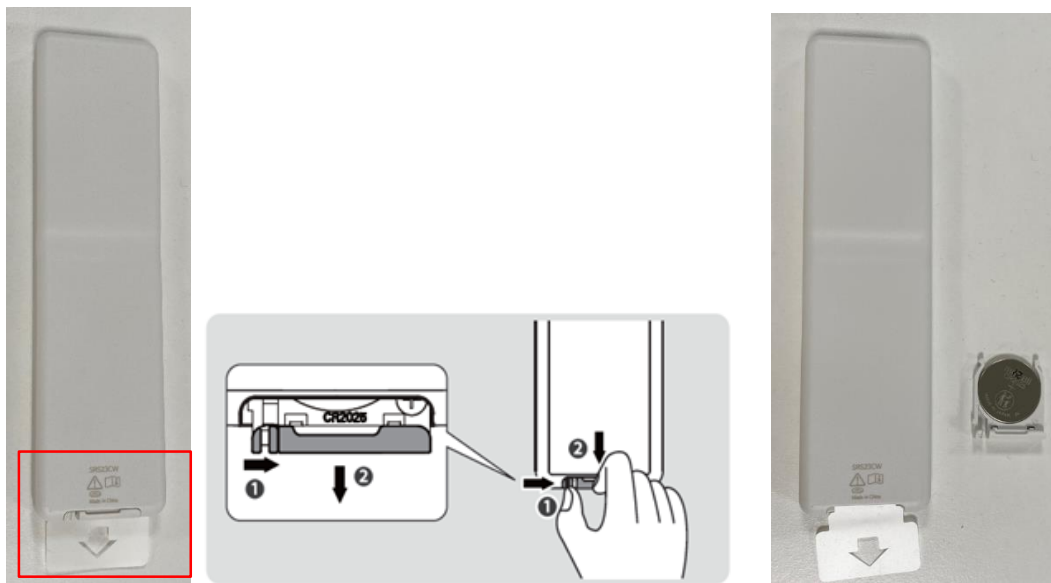
List the type that would typically be used to disassemble the product to a point where components and materials requiring selective treatment can be removed.

Tool Description	Tool information
Screw driver	
Nipper	
Plastic Hera Jig	

3. Product Disassembly Process

1. Batteries

Batteries can easily be removed from the remote control once the back cover of the remote control has been removed.



Batteries can easily be removed from the PCB Assembly once the back cover of product has been removed.

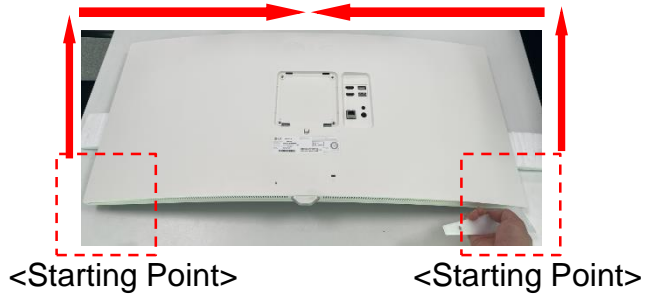
3. Product Disassembly Process

2. PCBs and LCD Module

Remove M4 screw 4EA with screw driver



Insert Hera Jig at Bottom Corner points and disassemble Back Cover



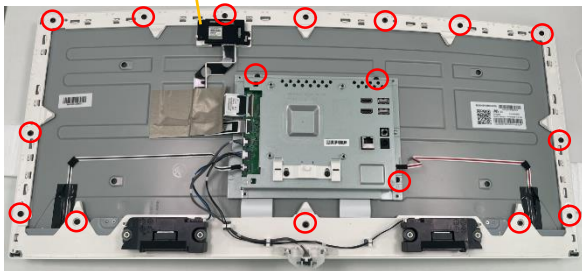
Unlatch for disassemble Wi-Fi cover



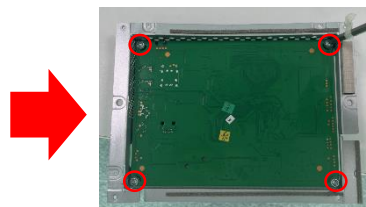
Unlatch for disassemble Wi-Fi PCB



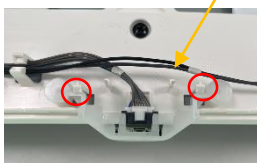
Remove M3 screw 17EA by screw driver



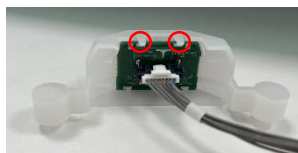
Remove M3 screw 4EA by screw driver



Unlatch 2ea for disassemble IR cover



Unlatch 2ea for disassemble IR PCB



3. Product Disassembly Process

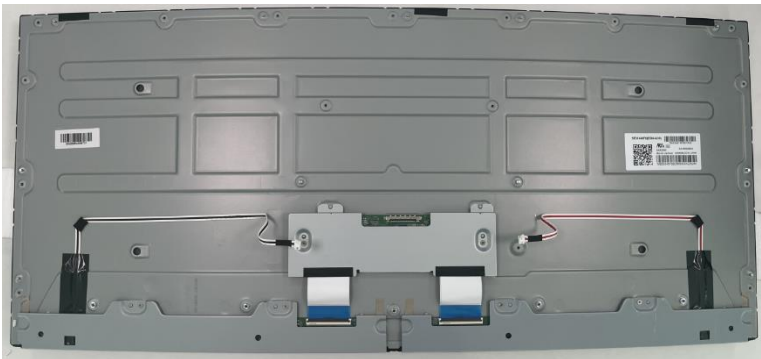
3. Plastics containing Brominated Flame Retardants

Plastic of speaker, cable connector, fan may contain brominated flame retardants, remove them all using a common available tool.

4. LCD Module

LCD (together with their casing) is only left after all other parts like electronic units have been removed.

LCD module



3. Product Disassembly Process

5. Power cord and signal cables

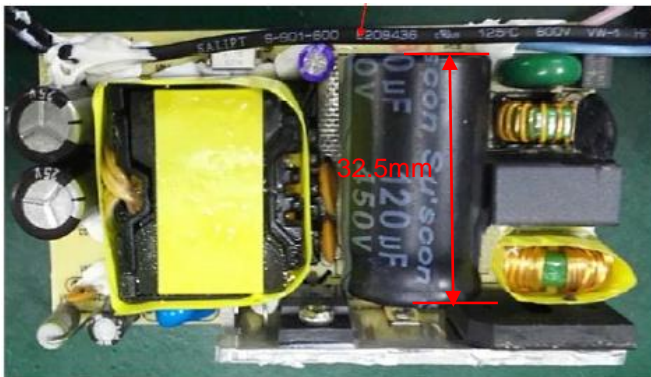
A Power cord plugged into the back of the display can easily be removed by hand or cables are provided as de-attached from the product



HDMI Cable

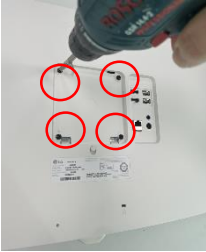
6. Capacitors > 25 mm

Capacitors > 25 mm are located in the power supply units and can be removed by nipper

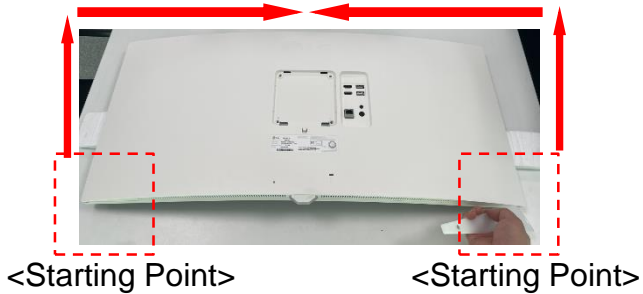


4. Disassembly of External enclosure

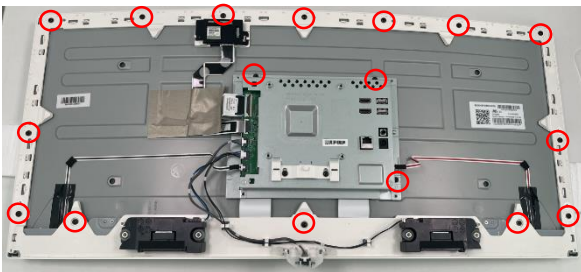
Remove Screw 4EA by screw driver



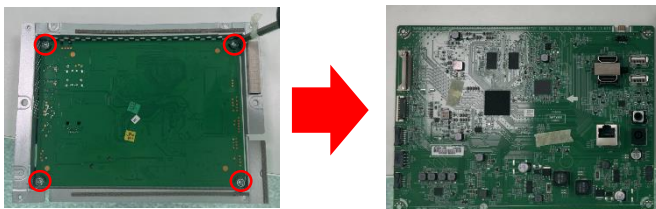
Insert Hera Jig at Bottom Corner points and disassemble Back Cover



Remove M3 screw 17EA by screw driver



Remove M3 screw 4EA by screw driver



4. Disassembly of External enclosure

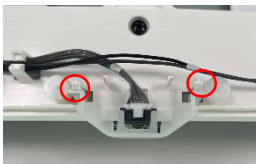
Unlatch for disassemble Wi-Fi cover



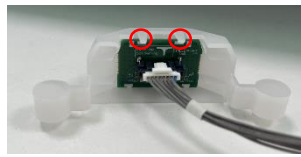
Unlatch for disassemble Wi-Fi PCB



Unlatch 2ea for disassemble IR cover



Unlatch 2ea for disassemble IR PCB



LCD Module

