



# Cubi Z AI 8M Infokit V1.0

CND Product Marketing | Aug-2025



## NEXT-LEVEL AI PC

# Cubi Z AI 8M

*msi*

**AMD**  
**RYZEN AI**



**Cubi Z AI Series**  
Business & Productivity PC

# Cubi Z AI 8M

*msi*



AI Ready,  
Future-Ready

Productivity Redefined  
for Business



Reliability in Action

Operability That Delivers

# Cubi Z AI 8M Series



**Sleek & Elegant**



**0.9-Liters**



**VESA**  
Mountable



**PCR**  
(Post-Consumer  
Recycled Plastic)



# Cubi Z AI 8M Series

msi

Windows 11 Pro  
Windows 11 Home

(MSI recommends Windows 11 Pro for business.)



USB 4  
40 Gbps



# Resilient and Pioneering Spirit of Your Business



Your business should be empowered to stop at nothing while navigating your journey with the MSI Business & Productivity Series products.

Find more details about MSI B2B projects on: <https://www.msi.com/Business/case>



Digital Signage &  
Public Service



Business &  
Restaurant



Education



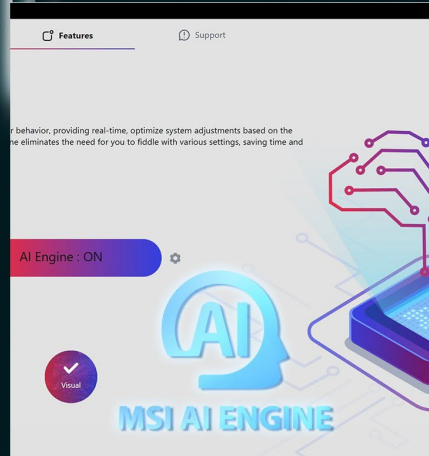
Medical & Science

# AI - Accelerate Immediately

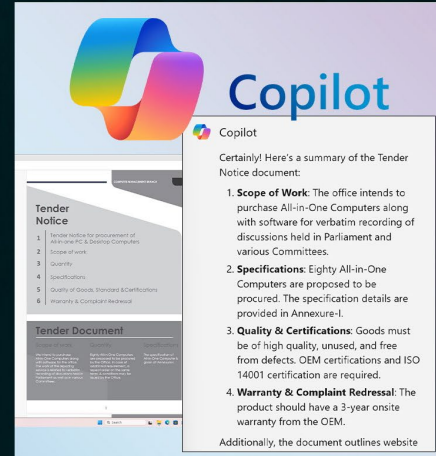
msi



**NPU**  
Neural Processing Unit



**MSI AI Engine**  
Beyond Intelligence

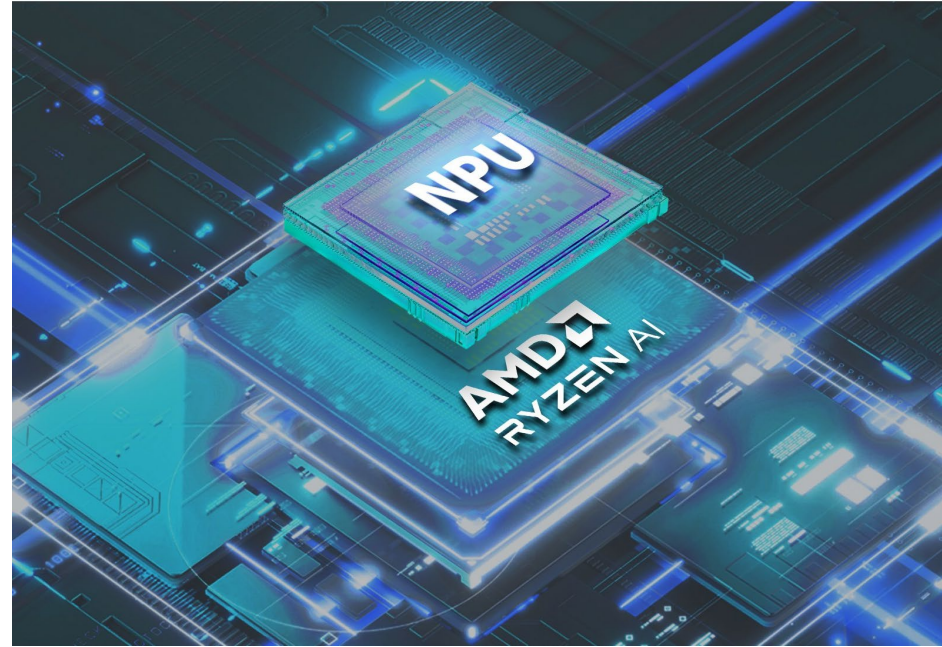


**Microsoft Copilot**  
AI Assistant

# NPU (Neural Processing Unit)

NPU - Designed for efficient AI workloads and lower power consumption.

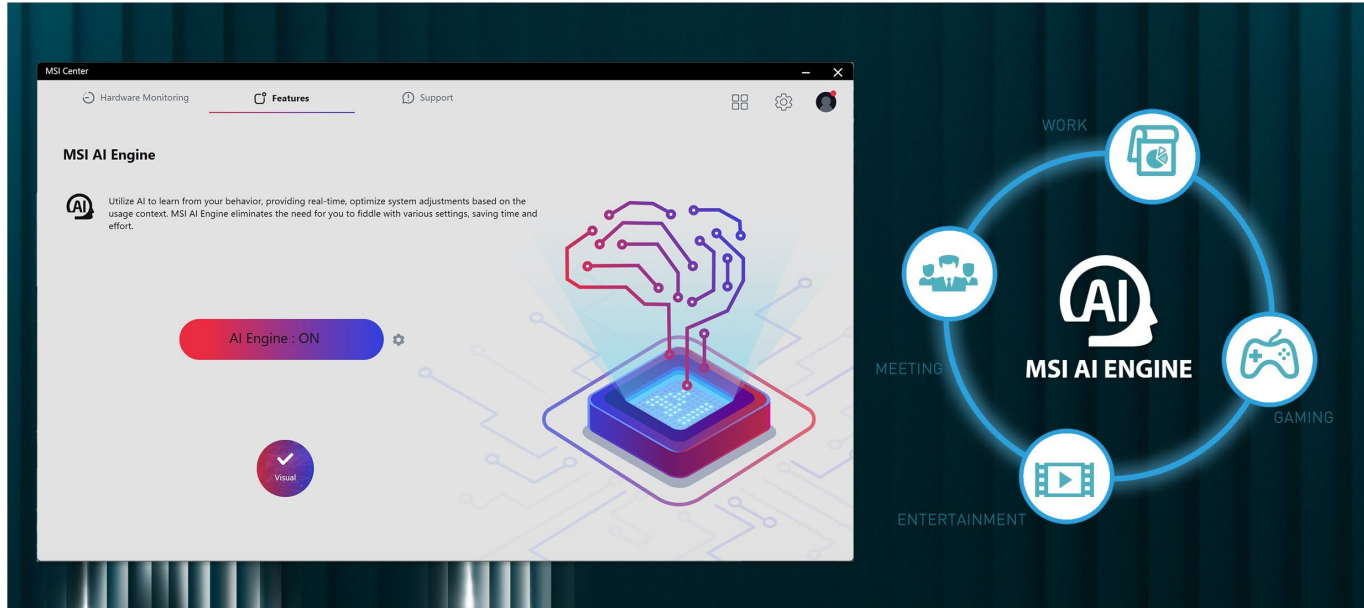
The latest Integrated NPU also powers more workloads; it is the best choice to accelerate AI programs for long-sustained, power moderate, intensive applications, elevating your workflow to new heights.





# MSI AI Engine

MSI AI Engine automatically detects user scenarios and adjusts performance, or display mode accordingly, eliminating the need for manual adjustments.

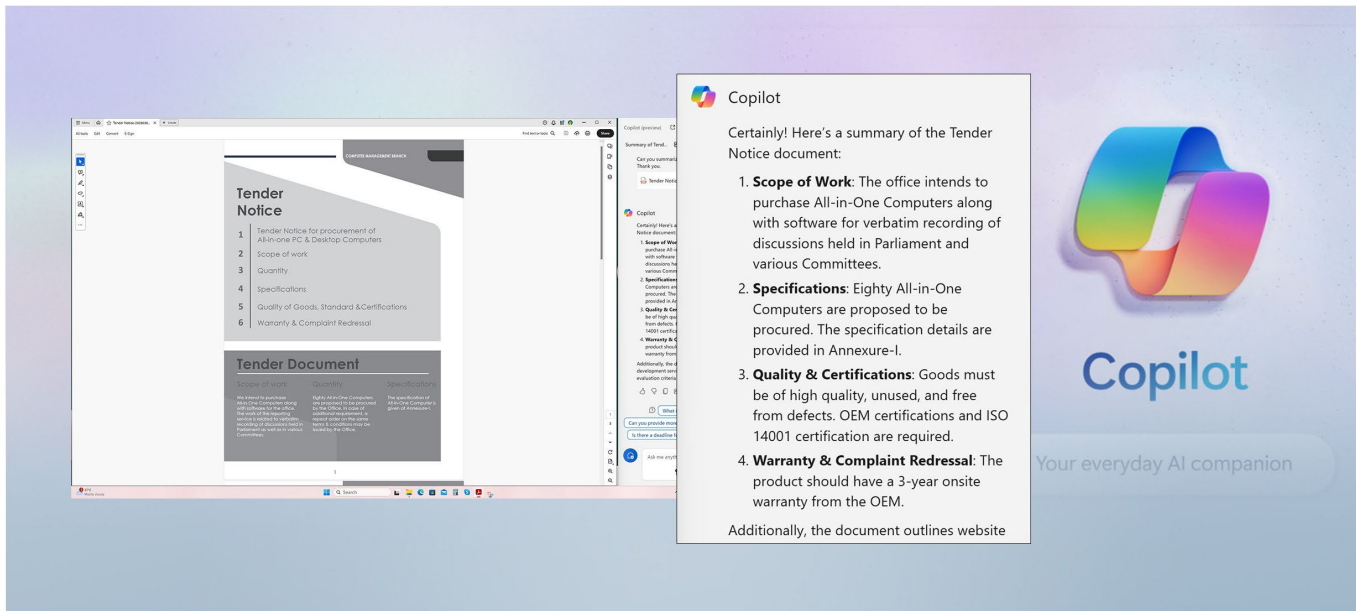


\*Please install the MSI AI Engine from the MSI Center.

\*The interface and functionality may differ due to version change.

# Microsoft Copilot

Work smarter, be more productive, boost creativity, and stay connected with Copilot — an AI companion that adapts to your needs.



The image shows a screenshot of the Microsoft Copilot interface. On the left, a document titled "Tender Notice" is displayed, listing six items: 1. Scope of work, 2. Quantity, 3. Specifications, 4. Quality of Goods, Standard & Certifications, 5. Warranty, and 6. Complaint Redressal. Below this, a "Tender Document" section is visible. On the right, a Copilot chat window is open, displaying a summary of the document. The chat window includes the Copilot logo and the text "Certainly! Here's a summary of the Tender Notice document:". Below this, four numbered points are listed: 1. **Scope of Work:** The office intends to purchase All-in-One Computers along with software for verbatim recording of discussions held in Parliament and various Committees. 2. **Specifications:** Eighty All-in-One Computers are proposed to be procured. The specification details are provided in Annexure-I. 3. **Quality & Certifications:** Goods must be of high quality, unused, and free from defects. OEM certifications and ISO 14001 certification are required. 4. **Warranty & Complaint Redressal:** The product should have a 3-year onsite warranty from the OEM. Additionally, the document outlines website

\*Please check the supported regions and languages on the Microsoft website

\*\*The interface and functionality may differ due to version change.

# Productivity Drives Business

PRODUCTIVITY

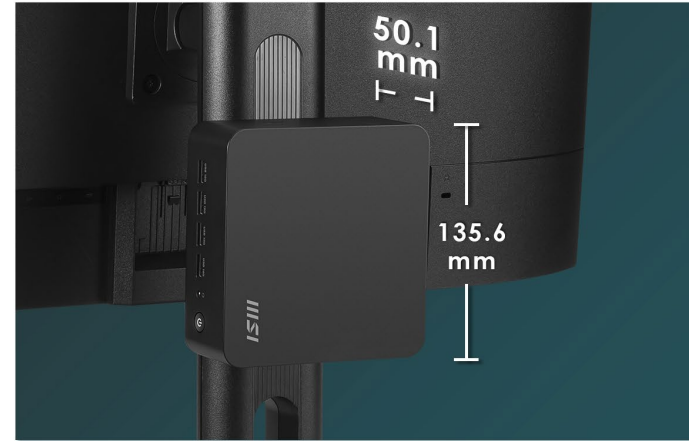
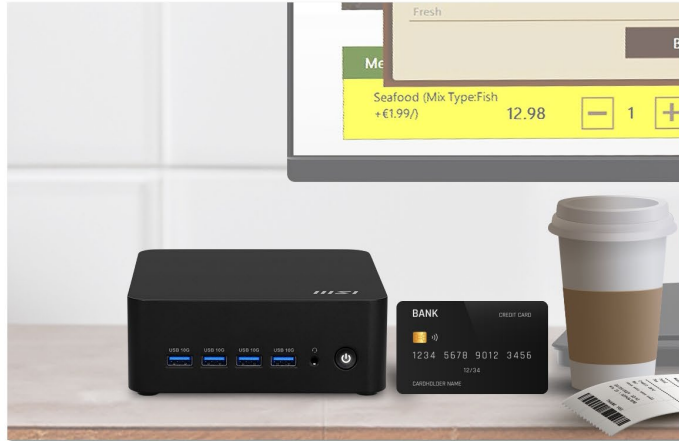
The Cubi Z is an ideal solution for tight spaces, efficiently handling tasks from basic computing to multimedia streaming.



PRODUCTIVITY

# Maximize Space with the Versatile Cubi Z

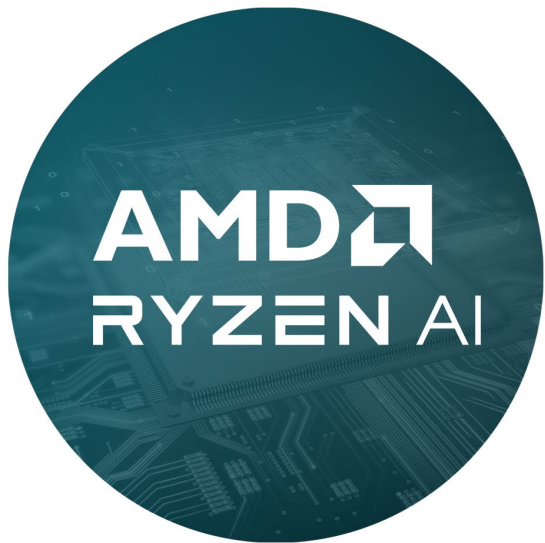
The Cubi Z is perfect for spaces with limited room, featuring a 0.9-liter chassis. It can be mounted behind a monitor, on a wall, or in digital signage, freeing up desk space and creating a tidier workspace.





# Tailored for Professional Users

Equipped with up to AMD Ryzen™ 9 Processor, it delivers faster and more reliable performance, enabling users to multitask various applications effortlessly.



Up to  
**AMD Ryzen™ 9  
8945HS Processor**

Built-in  
**NPU**

Support  
**Windows 11 Pro**

Up to 5600MHz  
**DDR5 64GB**  
Dual Channel Memory

\*The actual specification will vary by model.

## WiFi 6E Technology

Wi-Fi 6E emphasizes transmission security and improves signal strength, enabling simultaneous connections to more devices.



## DDR5 Dual-Channel Memory

DDR5 memory with dual-channel can enhance work efficiency and quality, processing large amounts of data and complex multitasking quickly.



\*The actual specification will vary by model.

# USB4: A Single Cable to Serve All



USB4 supports power delivery input of up to 100W, making it an excellent choice for both powering and displaying through a single port.

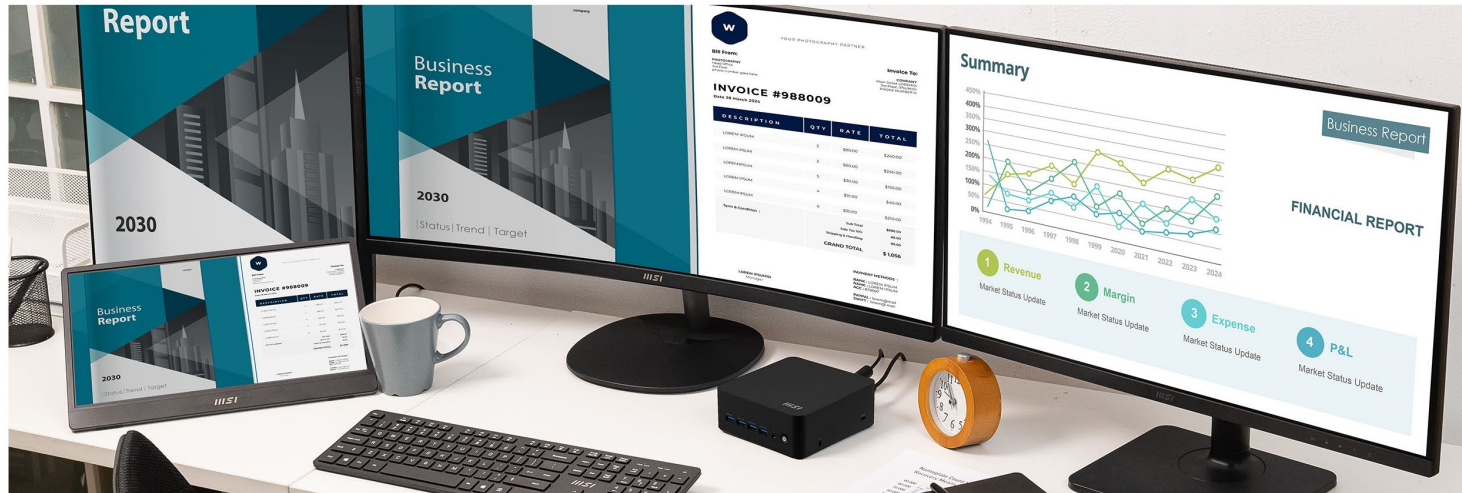


# Quadruple Display Support



msi

Supporting up to 4 displays with HDMI™-out and USB4 allows for increased productivity by providing more screen space to manage multiple applications simultaneously.





# Reliability That Aligns with Business Needs



RELIABILITY

Reliability and quality are our top priority, and we focus on delivering a hassle-free, high-quality product.



RELIABILITY

# Secure Inside and Out

## Dual 2.5G LAN



Experience the advantages of dual 2.5G LAN, which enhances troubleshooting, redundancy, network segmentation, security, and load balancing.

## Kensington Lock



By physically tethering the Cubi Z to a secure object, the Kensington lock is particularly useful in safeguarding the device and the valuable data in it.

## dTPM 2.0



dTPM 2.0\* provides hardware-based security. It encrypts sensitive data and passwords for better protection.

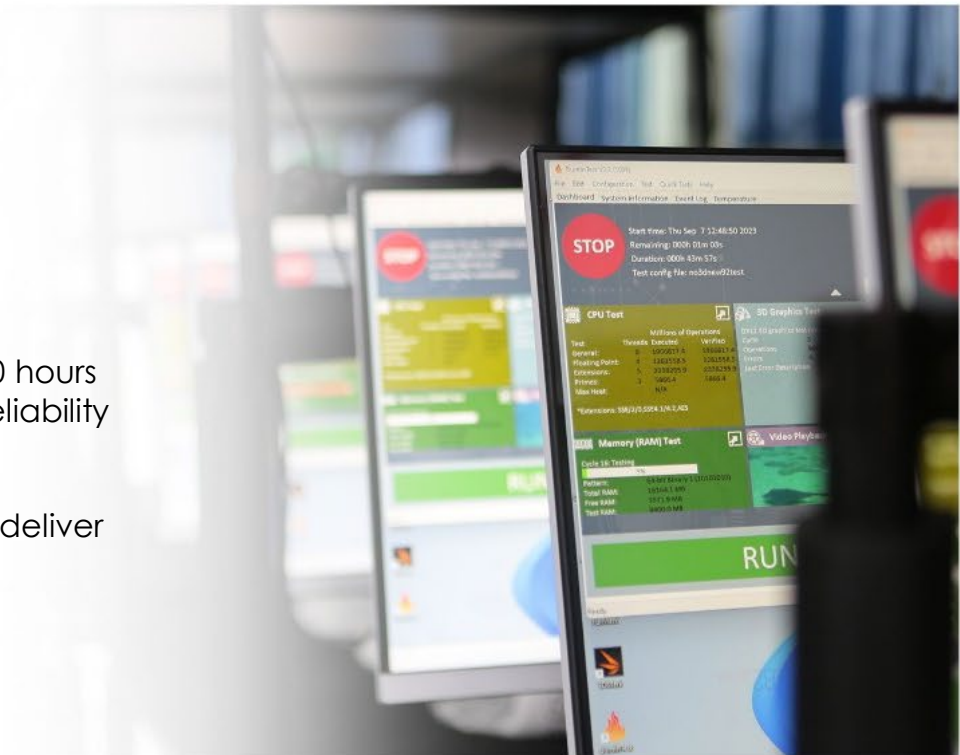
# 24 / 7 Qualified Reliability Test

*msi*



Our relentless commitment to quality is reflected in our extensive reliability testing, which generates over 246,000 hours of MTBF (Mean Time Between Failures). We assure 24/7 reliability and availability, delivering an effortless user experience.

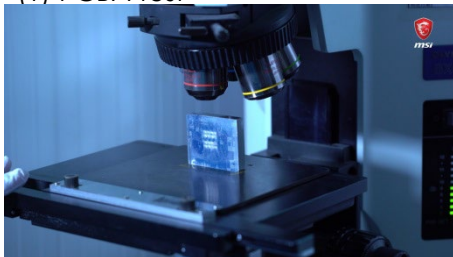
Quality is not just a buzzword for us, it's our top priority to deliver a hassle-free and high-quality product.



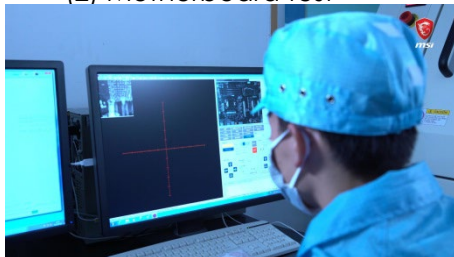
# Intensive Quality testing

msi

(1) PCBA test



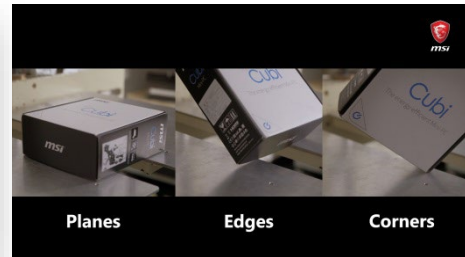
(2) Motherboard test



(3) Vibration test (X & Y Axis)



(4) Drop test



(5) Chamber test (Temp. & Humidity)



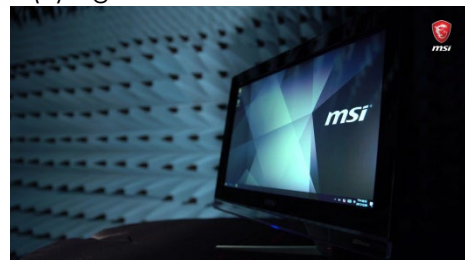
(6) Infrared (IR) test



(7) Acoustic test



(8) Signal test



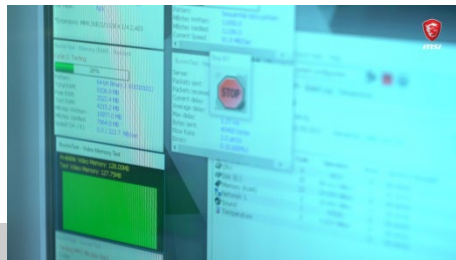
(9) I/O port life test



(10) Power test



(11) System performance test





# Uncompromising Product Quality

*msi*

MSI products exemplify uncompromising quality.

Through strict adherence to the MIL-STD-1916 testing standard in our factory inspections, we consistently achieve excellence in performance, durability, precision, and reliability.

This commitment places MSI at the forefront, enabling us to consistently deliver outstanding designs to customers.

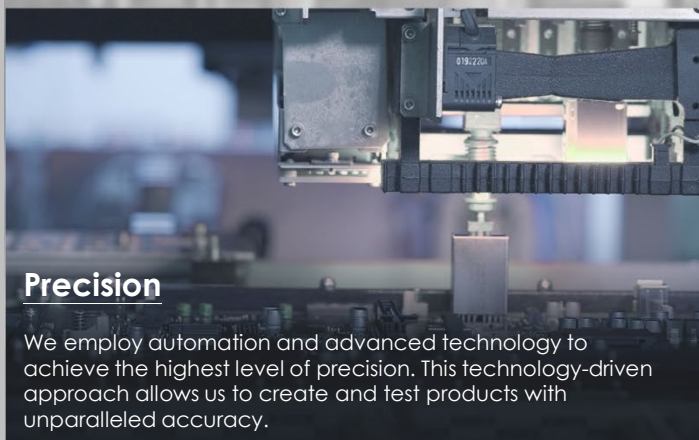
MSI modernized factory offering high-quality products Video:

<https://www.youtube.com/watch?v=ZvZ2GPn7CMc>



## Performance Assurance

MIL-STD-1916 testing guarantees MSI products meet high-performance standards, providing reliable and professional experiences with desktop PCs at their best.



## Precision

We employ automation and advanced technology to achieve the highest level of precision. This technology-driven approach allows us to create and test products with unparalleled accuracy.



## Durability

MIL-STD-1916 testing ensures every component meets strict durability standards, making MSI products capable of lasting through extended gaming and work sessions while delivering reliable performance.



## Reliability

In the world of business, reliability and dependability are crucial. MSI products go through rigorous testing and quality checks to minimize the chances of failure, ensuring an uninterrupted workflow.

# Built for Sustainability

*msi*

SUSTAINABILITY

Solid Performance, Sustainable Footprint.



SUSTAINABILITY

# Built for Sustainability



The mark of  
responsible forestry  
FSC™ N004460



The Cubi Z Series blends business-centric design with environmental responsibility - an embodiment of MSI's dedication to sustainability. By utilizing green material, PCR (Post-Consumer Recycled) plastic, ensures not only the products' durability but also commits to a greener world.

Our commitment extends to incorporating sustainable materials in both our product design and packaging. The Cubi Z Series embodies sustainable value and heightened productivity.

# Post-consumer Recycled (PCR) Plastic



PCR  
POST-CONSUMER RECYCLED



The Cubi Z contains **53.29%** PCR plastic, reducing plastic waste sent to landfills and contributing to environmental conservation.



# Sustainably Sourced Wood Pulp with FSC Certification

FSC-certified cartons are made from sustainably sourced wood pulp, ensuring responsible forest management. This certification guarantees that the materials are renewable and low-carbon, promoting environmental sustainability.

By using FSC-certified cartons, MSI supports sustainable practices and contributes to the preservation of forests for future generations



# Renewable Energy Plant in Factory

Since 2021, MSI has installed solar power systems in its facilities and gradually increased the proportion of purchased renewable energy.

By 2024, it has achieved a carbon reduction of over 70%, with more than 99% of the electricity used in its factories coming from renewable sources.

This demonstrates MSI's commitment to achieving net-zero sustainability by 2050.



Renewable Energy

# Operability That Delivers



OPERABILITY

Streamlining operations to maximize productivity and reduce waste.

OPERABILITY



# Convenience Meets Productivity



With VESA mountable design, it can be mounted behind a monitor, on a wall, or in digital signage, freeing up desk space.



If the computer is in a hard-to-reach spot, using the optional external power switch\* is easier than bending down to turn it on.



Eliminate external speakers for notifications and calls to save space and reduce clutter.

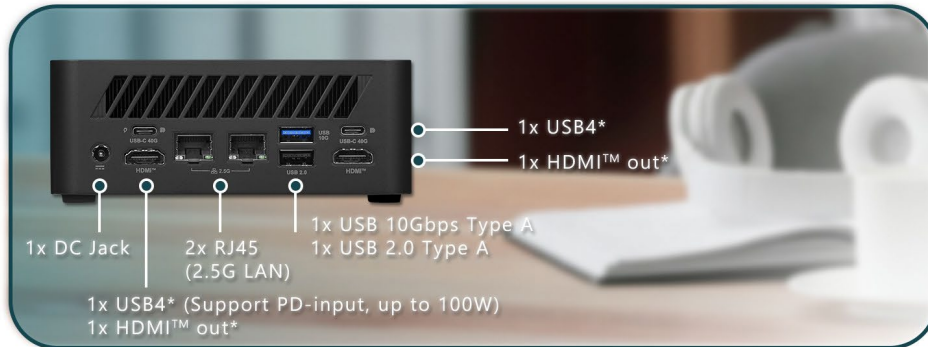
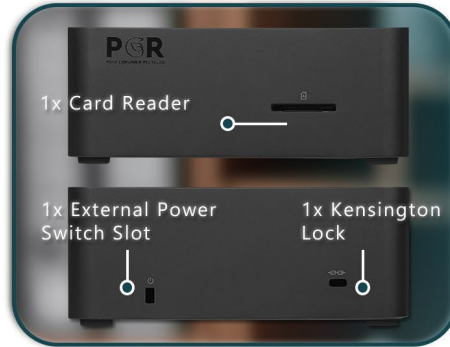
## msi

\*The interface and functionality may differ due to version change.  
Please download the latest MSI Center APP through Microsoft Store.





# Cubi Z AI 8M - IO Port



\*USB4 Type-C (DP 1.4 alt-mode up to 4K@60Hz / PD-out 15W)

\*HDMI™ out (supports 4K @60Hz as specified in HDMI™ 2.1)




<b>Marketing Name</b>	Cubi Z AI 8M
<b>Operating System</b>	Windows 11 Home or Windows 11 Pro
<b>CPU</b>	AMD Ryzen™ 9 8945HS AMD Ryzen™ 7 8845HS AMD Ryzen™ 5 8645HS
<b>Chipset</b>	AMD SoC
<b>Memory</b>	2x DDR5 5600 SO-DIMMs, up to 64GB
<b>Graphics</b>	AMD Radeon™ Graphics (Integrated)
<b>Storage</b>	1x M.2 2280 SSD (NVMe PCIe Gen4 x4)
<b>I/O (Front)</b>	4x USB 10Gbps Type A, 1x Mic-in/Headphone-out combo
<b>I/O (Side)</b>	1x Card Reader, 1x Kensington Lock, 1x External Power Switch Pin Header
<b>I/O (Rear)</b>	2x USB4 Type-C (DP 1.4 alt-mode up to 4K@60Hz / PD-out 15W / One of USB4 supports PD-in up to 100W), 1x USB 10Gbps Type A, 1x USB 2.0 Type A, 2x RJ45 (2.5G), 2x HDMI™ out (supports 4K @60Hz as specified in HDMI™ 2.1)
<b>TPM</b>	dTPM 2.0 Support
<b>Kensington Lock</b>	Yes
<b>Wireless LAN</b>	AMD RZ616 Wi-Fi 6E
<b>Bluetooth</b>	5.3
<b>LAN</b>	2x Realtek RTL8125BG (2.5G)
<b>Speaker</b>	1x 2W
<b>AC Adapter / PSU</b>	120W Adapter
<b>Cooling System</b>	Fan Cooler
<b>Volume</b>	0.9 Liter (1.90 pint)
<b>Dimension (WxDxH)</b>	136.00 x 132.00 x 50.10 mm (5.35 x 5.20 x 1.97 inch)
<b>Weight (N.W./ G.W.)</b>	0.79 Kg (1.74 lbs) / 2.02 Kg (4.45 lbs)
<b>VESA Mount</b>	75 x 75 mm and 100 x 100 mm
<b>External Power Switch</b>	Optional
<b>Accessories</b>	1x Quick guide, 1x Adaptor and Power cord

Cubi Z AI 8M - Specification

msi



# Competitors

Model name	MSI Cubi Z AI 8M 	ASUS ExpertCenter PN53 	Acer Revo Box RB102 
Processor	AMD Ryzen™ 9 8945HS/ Ryzen™ 7 8845HS/ Ryzen™ 5 8645HS	AMD Ryzen™ 7 7735HS/ R5 7535HS/ R9 6900HX/ R7 6800H/ R5 6600H	AMD Ryzen™ 7 5700U
Memory	2x DDR5 5600 SO-DIMMs, up to 64GB	2x DDR5 4800 SO-DIMMs, up to 64GB	2x DDR4 SO-Dimm
Graphics	Integrated- AMD Radeon™ Graphics	Integrated- AMD Radeon™ Graphics	Integrated- AMD Radeon™ Graphics
Storage	1x M.2 2280 SSD (NVMe PCIe Gen4 x4)	2x M.2 2280 PCIe 4 / 1x 2.5" HDD	1x M.2 SSD
USB Ports	2x USB4 Type-C (DP 1.4 alt-mode up to 4K@60Hz / PD-out 15W / One of USB4 supports PD-in up to 100W), 5x USB 10Gbps Type A, 1x USB 2.0 Type A	2x USB 4 Type-C (DP1.4, one supports PD input 100W) 2x USB 10Gbps Type A, 3x USB 5Gbps Type A,	1x USB 3.2 type C 4x USB 3.2 type A (Gen1)
Other IO	2x RJ45 (2.5G), 2x HDMI™ out (supports 4K @60Hz as specified in HDMI™ 2.1), 1x Card Reader, 1x Kensington Lock, 1x External Power Switch Pin Header, 1x Mic-in/Headphone-out combo	1x 2.5G RJ45 LAN, 2x HDMI 2.1 (Up to 4K@60Hz) 1x Configurable Port, 1x Audio Jack 1x Kensington Lock	2x RJ45(1G) 1x DisplayPort 1x HDMI(2.0b) 1 x Audio Jack Combo
WLAN	AMD RZ616 Wi-Fi 6E, Bluetooth® 5.3	Wi-Fi 6E, Bluetooth® 5.3	Intel® Wi-Fi 6E w/ BT5.3
Dimension/ Volume	136.00 x 132.00 x 50.10 mm / 0.9L	120 x 130 x 58 mm/ 0.9L	131x 131 x 30 mm/
TPM Support	dTPM 2.0 Support	fTPM 2.0/ Optional Discrete TPM 2.0	TPM support
Wall mount	Yes, External Power Switch support	Y	Y
Features	Built-in Speaker MSI AI Engine PCR	MyASUS	N/A

# B2B Projects



Over the past years, MSI has successfully supported countless of B2B projects, including government tenders, restaurant & hotel facilitation, shopping mall navigation projects, school & university developments and professional office projects.

Find more details about many of these projects on:

<https://www.msi.com/Business>



# *msi*

## NEXT-LEVEL AI PC



*msi*



Official Partner

**AMG**  
MOTORSPORT

