

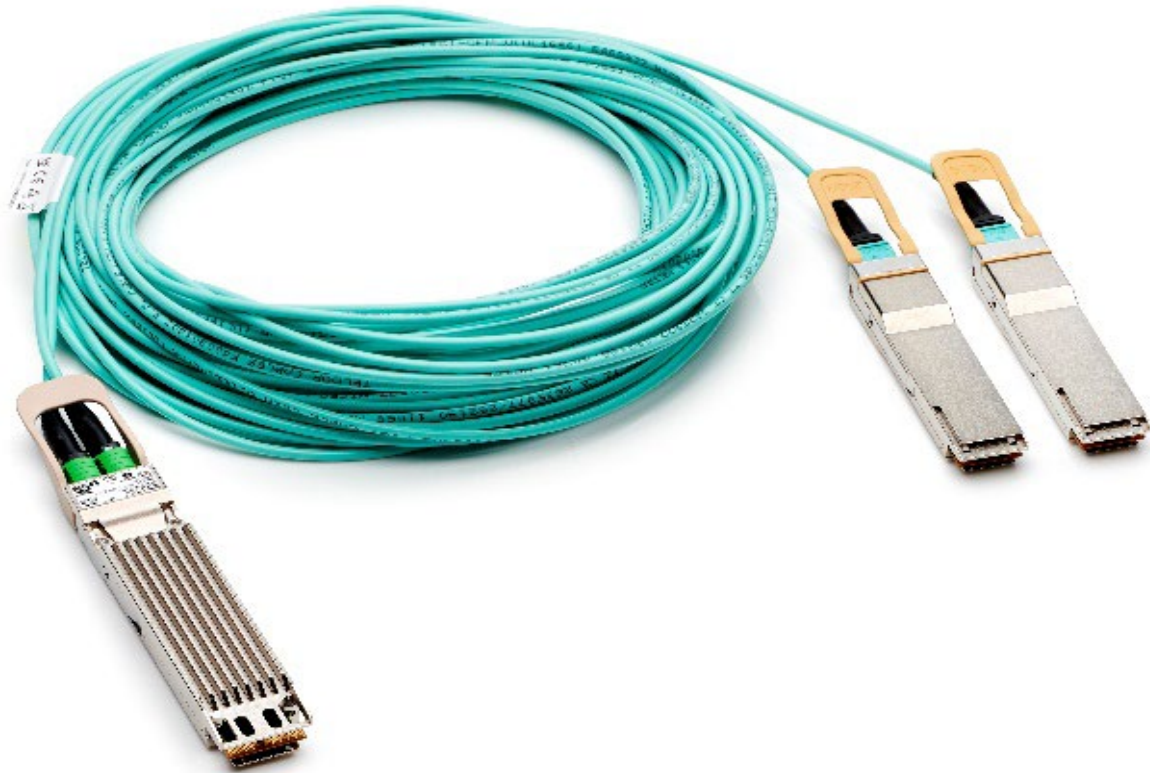
# HPE InfiniBand XDR Cables QuickSpecs

**HPE InfiniBand XDR Cables offer a variety of cable types and lengths to accommodate customer requirements, while taking into consideration the scale of cost and performance.**

InfiniBand XDR Active Copper Cables (ACC) are the lowest cost cabling choice to create high-speed, low-latency connections in an InfiniBand XDR solution. These OSFP cables are offered in various lengths. HPE InfiniBand XDR Cables, particularly Active Copper Cables (ACC), include signal-boosting integrated circuits (ICs) in the cable end to extend their reach.

XDR optical interconnect is enabled through XDR transceivers usage with fiber cables. XDR transceivers for switches are dual ported and support two XDR links. XDR transceivers for host channel adapters (HCAs) are single ported.

## Overview




---

## Models

### InfiniBand Single Mode Optical Transceiver

HPE InfiniBand XDR/Ethernet 800GbE OSFP 2-port Single-mode 500m Switch-side Transceiver	P79828-B21
HPE InfiniBand XDR/Ethernet 400GbE QSFP112 1-port Single-mode 500m Transceiver	P79829-B21
HPE InfiniBand XDR/Ethernet 800GbE OSFP 1-port Single-mode 500m HCA-side Transceiver	P82314-B21
HPE InfiniBand/Ethernet 2x400GbE OSFP 2-port Multi-mode 50m Flat-Top Transceiver	P86377-B21
HPE InfiniBand XDR/Ethernet OSFP to OSFP 1.5m Switch-to-Switch Active Copper Cable	P79111-B21

#### Notes:

- Switch-side transceivers may only be used in NDR switch ports. HCA-side transceivers may only be used in HCA ports
- Multi-mode and single-mode MUST not be mixed. Multi-mode transceivers MUST be used with Multi-mode fiber cables. Single-mode transceivers MUST be used with Single-mode fibers
- These transceivers have MPO-12/APC (Angled Polished Connectors)

## Overview

### InfiniBand Active Copper Cables

HPE InfiniBand XDR/Ethernet OSFP to 2xOSFP 1m Active Copper Splitter Cable	P79112-B21
HPE InfiniBand XDR/Ethernet OSFP to 2xOSFP 1.5m Active Copper Splitter Cable	P79112-B22
HPE InfiniBand XDR/Ethernet OSFP to 2xOSFP 2m Active Copper Splitter Cable	P79112-B23

**Notes:**

- Switch-Switch cables may only be used to connect between NDR switches. Splitter cables may only be used to connect switches to Host Channel Adapters (HCAs)
  - Switch-side transceivers may only be used in NDR switch ports. HCA-side transceivers may only be used in HCA ports
  - Multi-mode and single-mode MUST not be mixed. Multi-mode transceivers MUST be used with Multi-mode fiber cables. Single-mode transceiver MUST be used with Single-mode fibers
  - Both OSFP and QSFP112 ends of the cable are based on the CMIS management interface
-

## Service and Support

### HPE Services

No matter where you are in your digital transformation journey, you can count on HPE Services to deliver the expertise you need when, where, and how you need it. From planning to deployment, ongoing operations and beyond, our experts can help you realize your digital ambitions.

<https://www.hpe.com/services>

---

### Consulting Services

No matter where you are in your journey to hybrid cloud, experts can help you map out your next steps. From determining what workloads should live where, to handling governance and compliance, to managing costs, our experts can help you optimize your operations.

<https://www.hpe.com/services/consulting>

---

### HPE Managed Services

HPE runs your IT operations, providing services that monitor, operate, and optimize your infrastructure and applications, delivered consistently and globally to give you unified control and let you focus on innovation.

[HPE Managed Services | HPE](#)

---

### Operational services

Optimize your entire IT environment and drive innovation. Manage day-to-day IT operational tasks while freeing up valuable time and resources. Meet service-level targets and business objectives with features designed to drive better business outcomes.

<https://www.hpe.com/services/operational>

---

### HPE Complete Care Service

HPE Complete Care Service is a modular, edge-to-cloud IT environment service designed to help optimize your entire IT environment and achieve agreed upon IT outcomes and business goals through a personalized experience. All delivered by an assigned team of HPE Services experts. HPE Complete Care Service provides:

- A complete coverage approach - edge to cloud
- An assigned HPE team
- Modular and fully personalized engagement
- Enhanced Incident Management experience with priority access
- Digitally enabled and AI-driven customer experience

<https://www.hpe.com/services/complecare>

---

## Service and Support

### HPE Tech Care Service

HPE Tech Care Service is the operational support service experience for HPE products. The service goes beyond traditional support by providing access to product specific experts, an AI driven digital experience, and general technical guidance to not only reduce risk but constantly search for ways to do things better. HPE Tech Care Service delivers a customer-centric, AI driven, and digitally enabled customer experience to move your business forward. HPE Tech Care Service is available in three response levels. Basic, which provides 9x5 business hour availability and a 2-hour response time. Essential which provides a 15-minute response time 24x7 for most enterprise level customers, and Critical which includes a 6-hour repair commitment where available and outage management response for severity 1 incidents.

<https://www.hpe.com/services/techcare>

---

### HPE Lifecycle Services

HPE Lifecycle Services provide a variety of options to help maintain your HPE systems and solutions at all stages of the product lifecycle. A few popular examples include:

- Lifecycle Install and Startup Services: Various levels for physical installation and power on, remote access setup, installation and startup, and enhanced installation services with the operating system.
- HPE Firmware Update Analysis Service: Recommendations for firmware revision levels for selected HPE products, taking into account the relevant revision dependencies within your IT environment.
- HPE Firmware Update Implementation Service: Implementation of firmware updates for selected HPE server, storage, and solution products, taking into account the relevant revision dependencies within your IT environment.
- Implementation assistance services: Highly trained technical service specialists to assist you with a variety of activities, ranging from design, implementation, and platform deployment to consolidation, migration, project management, and onsite technical forums.
- HPE Service Credits: Access to prepaid services for flexibility to choose from a variety of specialized service activities, including assessments, performance maintenance reviews, firmware management, professional services, and operational best practices.

**Notes:** To review the list of Lifecycle Services available for your product go to:

<https://www.hpe.com/services/lifecycle>

For a list of the most frequently purchased services using service credits, see the [HPE Service Credits Menu](#).

---

### Other Related Services from HPE Services:

#### HPE Education Services

Training and certification designed for IT and business professionals across all industries. Broad catalogue of course offerings to expand skills and proficiencies in topics ranging from cloud and cybersecurity to AI and DevOps. Create learning paths to expand proficiency in a specific subject. Schedule training in a way that works best for your business with flexible continuous learning options.

<https://www.hpe.com/services/training>

## Service and Support

### Defective Media Retention

An option available with HPE Complete Care Service and HPE Tech Care Service and applies only to Disk or eligible SSD/Flash Drives replaced by HPE due to malfunction.

Consult your HPE Sales Representative or Authorized Channel Partner of choice for any additional questions and services options.

### Parts and Materials

HPE will provide HPE-supported replacement parts and materials necessary to maintain the covered hardware product in operating condition, including parts and materials for available and recommended engineering improvements.

Parts and components that have reached their maximum supported lifetime and/or the maximum usage limitations as set forth in the manufacturer's operating manual, product quick-specs, or the technical product data sheet will not be provided, repaired, or replaced as part of these services.

### How to Purchase Services

Services are sold by Hewlett Packard Enterprise and Hewlett Packard Enterprise Authorized Service Partners:

- Services for customers purchasing from HPE or an enterprise reseller are quoted using HPE order configuration tools.
- Customers purchasing from a commercial reseller can find services at <https://ssc.hpe.com/portal/site/ssc/>

### AI Powered and Digitally Enabled Support Experience

Achieve faster time to resolution with access to product-specific resources and expertise through a digital and data driven customer experience

Sign into the HPE Support Center experience, featuring streamlined self-serve case creation and management capabilities with inline knowledge recommendations. You will also find personalized task alerts and powerful troubleshooting support through an intelligent virtual agent with seamless transition when needed to a live support agent.

<https://support.hpe.com/hpesc/public/home/signin>

---

## Consume IT On Your Terms

[GreenLake](#) edge-to-cloud platform brings the cloud experience directly to your apps and data wherever they are—the edge, colocations, or your data center. It delivers cloud services for on-premises IT infrastructure specifically tailored to your most demanding workloads. With a pay-per-use, scalable, point-and-click self-service experience that is managed for you, GreenLake edge-to-cloud platform accelerates digital transformation in a distributed, edge-to-cloud world.

- Get faster time to market
- Save on TCO, align costs to business
- Scale quickly, meet unpredictable demand
- Simplify IT operations across your data centers and clouds

## Service and Support

To learn more about HPE Services, please contact your Hewlett Packard Enterprise sales representative or Hewlett Packard Enterprise Authorized Channel Partner. Contact information for a representative in your area can be found at "Contact HPE" <https://www.hpe.com/us/en/contact-hpe.html>

For more information:

<http://www.hpe.com/services>

---

## Environment-friendly Products and Approach End-of-Life Management and Recycling

Hewlett Packard Enterprise offers end-of-life [product return, trade-in, and recycling programs](#) in many geographic areas, for our products. Products returned to Hewlett Packard Enterprise will be recycled, recovered or disposed of in a responsible manner.

The EU WEEE Directive (2012/19/EU) requires manufacturers to provide treatment information for each product type for use by treatment facilities. This information (product disassembly instructions) is posted on the [Hewlett Packard Enterprise web](#) site.

These instructions may be used by recyclers and other WEEE treatment facilities as well as Hewlett Packard Enterprise OEM customers who integrate and re-sell Hewlett Packard Enterprise equipment.

---

## Summary of Changes

Date	Version History	Action	Description of Change
02-Mar-2026	<a href="#">Version 4</a>	Changed	InfiniBand Active Copper Cables models added in Overview section.
01-Dec-2025	<a href="#">Version 3</a>	Added	New SKU P79111-B21 was added in Overview section.
03-Nov-2025	<a href="#">Version 2</a>	Added	New SKU P86377-B21 added in Overview section.
06-Oct-2025	<a href="#">Version 1</a>	New	New QuickSpecs

[Shape the Future of QuickSpecs - Your Input Matters](#)

[Chat now](#)

© Copyright 2026 Hewlett Packard Enterprise Development LP. The information contained herein is subject to change without notice. The only warranties for Hewlett Packard Enterprise products and services are set forth in the express warranty statements accompanying such products and services. Nothing herein should be construed as constituting an additional warranty. Hewlett Packard Enterprise shall not be liable for technical or editorial errors or omissions contained herein.

a50009228enw - 17260 - Worldwide - V4 - 02-March-2026  
HEWLETT PACKARD ENTERPRISE  
HPE.com

