

WXP Collaboration Space Insights

Make the most of your collaboration workspaces.



Solution Overview

WXP Collaboration Space Insights¹ provides a single-pane-of-glass into meeting space utilization, allowing you to identify inefficiencies, understand trends, make unified communications (UC) technology choices and to make data-driven decisions that help optimize collaboration spaces for the hybrid workplace.

Solution Benefits

People

Discover how people are using the spaces and ensure their needs are met. Can employees always find a place to meet? Are schedules disrupted by no-show bookings or meeting collisions? How many ad hoc spaces do you need?

Space

Identify trends by building, floor, room type, location, etc. Optimize room size and real estate investments. Are large conference rooms rarely holding more than 4-5 people? Are certain floors reaching capacity? Are huddle spaces being used at a higher rate than conference rooms?

Technology

Understand how your technology investment is being used and where it could be optimized. Do employees have sufficient space to host their hybrid meetings? Are Webex rooms frequently dialing into Teams meetings (and vice versa).

How Does It Work?

With WXP Collaboration Space Insights, you can visualize and dissect the activity in your conference rooms and huddle spaces, helping to make data-driven decisions to increase the ROI on your real estate investment and improve workforce productivity. This is accomplished by combining three components of data into a single-pane-of-glass.

- Room schedule (via O365/Exchange or Google Calendar)
- Meeting & call data (from all UC/UCaaS vendors)
- Occupancy & people count data (from supported room hardware)

Combined, this data offers visibility into the modern office space and provides the tools to ensure your investment is meeting the needs of the workforce. WXP Collaboration Space Insights keeps track of over 60 metrics, giving you down to the minute data accuracy.

Software Highlights

Utilization:

- View meeting attendance stats and trends
- Track around-the-clock room activity
- Customize views by desired attributes

Usage:

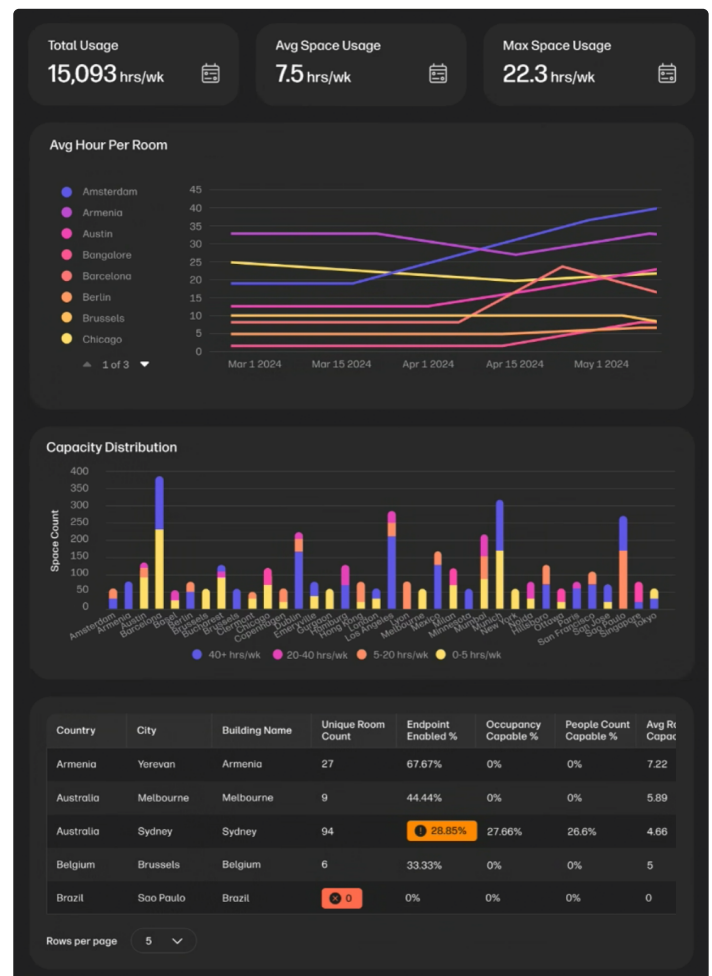
- Compare capacity vs. occupancy
- Eliminate ghost or zombie meetings
- Identify frequent booking offenders

ROI & Planning:

- Identify underutilized resources
- Understand technology usage
- Discover activity outside calls

Delivery Specifications

HP WXP Collaboration Space Insights is a customer self-managed or partner-managed SaaS software solution. Access is granted after purchasing a plan and HP completing the access entitlement.



Plans

Data Retention	Features	Security Certification
----------------	----------	------------------------

- | | | |
|--|---|--|
| <ul style="list-style-type: none"> ▪ 1 year analytics | <ul style="list-style-type: none"> ▪ Space insights analytics ▪ Custom tagging ▪ SSO integration | <ul style="list-style-type: none"> ▪ SOC2 Type II (Commercial) ▪ FedRAMP (Federal) |
|--|---|--|

Track Room Utilization

Get a breakdown of room occupancy, technology usage, meeting adherence, ad-hoc activity:

- **View meeting attendance stats and trends**
Compare scheduled to attended, missed, unplanned usage
- **Track around-the-clock room activity**
Track video, audio, presentation, people-only activity counts and durations
- **Customize views by desired attributes**
Identify trends by site, room type, department, user, etc.

Reduce Inefficient Room Usage

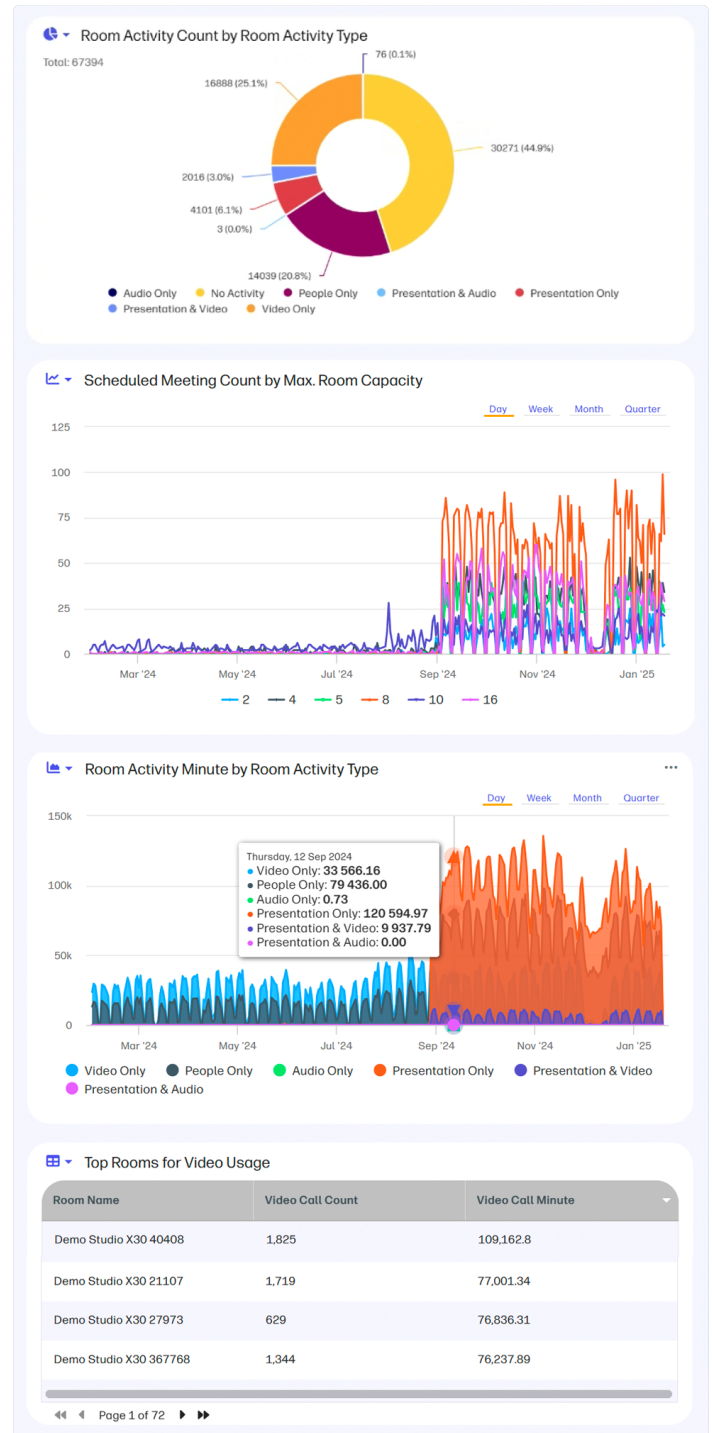
Highlight missed and inefficient meeting patterns, taking action to prevent costly repetition:

- **Detect ghost and zombie missed meetings**
Highlight recurring or one-time bookings with no attendance
- **Compare room capacity vs. occupancy**
Leverage people count to find large spaces used for small meetings
- **Identify frequent booking offenders**
Find users responsible for missed, low occupancy bookings

Optimize Tech & Real Estate Investments

Plan for new build-outs and repurpose existing spaces and technology

- **Identify underutilized resources**
Sort to find assets that are candidates for repurposing
- **Understand technology usage**
Get a complete view across video, audio, presentation
- **Discover activity outside calls**
Track people-only meetings and local presentation sharing



Roles and Responsibilities

Tasks	HP WXP	Customer
Onboarding project management / status reporting	Responsible	
Setup WXP Collaboration account	Responsible	
Configure SSO	Support	Responsible
Configure cloud integration and data collection	Responsible	Responsible
Configure initial Space Insights analytics	Responsible	Support
Basic remote training - Up to 4 hours	Responsible	
Transition from onboarding to post-sales support	Responsible	

System Requirements

Platforms

- Room Booking
 - Microsoft O365 (Calendar)
 - Microsoft Exchange (Calendar)
 - Google Calendar
- UC Devices and Platforms
 - Microsoft Teams Meetings
 - Microsoft Teams Rooms
 - Zoom Meetings & Webinars
 - Zoom Rooms
 - Cisco On-Prem Meetings (CUCM, CMS, VCS)
 - Cisco Webex & Webinars (Meetings)
 - Cisco Control Hub
 - HP|Poly (RMX, DMA, RPRM)

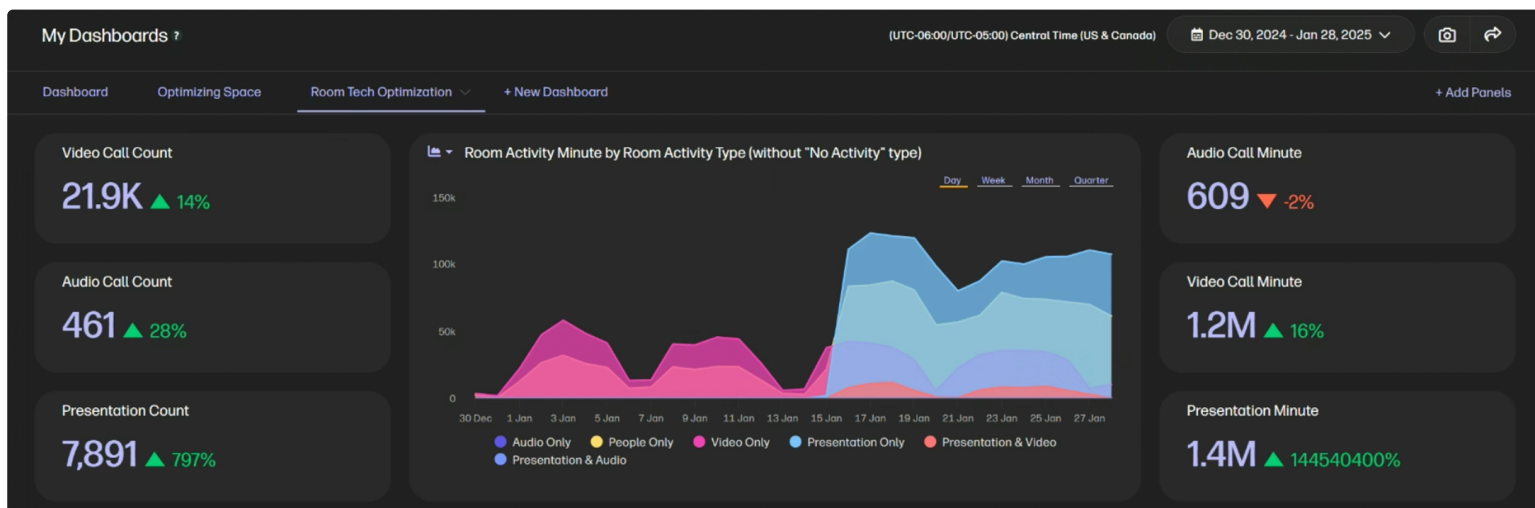
Web browsers

- Google Chrome - latest version
- Microsoft Edge (Chromium-based) - latest version
- Firefox - latest version
- Safari - latest version

Network requirements

The WXP Collaboration Data Collector talks directly to both the WXP Collaboration Cloud and your On-Premise infrastructure.²

- For WXP Collaboration Cloud Connectivity Information, see [URL Requirements for the WXP Collaboration Cloud](#)
- For Infrastructure Network Requirements, see [Infrastructure Network Requirements](#)
- For Endpoint Network Requirements, see [Endpoint Monitoring Port Requirements](#)



Additional HP Services

Add-on services such as HP support services, managed solutions, collaboration solutions, endpoint security, digital workspaces, and more are also available. Please contact your HP representative or Channel Partner.



For more information, visit www.hp.com/wxp and www.hp.com/us-en/privacy/ww-privacy.html



1. HP WXP Collaboration may use Aggregated Data (which is non-personal data, technical information or other information related to end user's use of WXP Collaboration that can be used in an aggregated and anonymized form) (i) to compile statistical and other information related to the performance, operation and use of the solution, (ii) to improve performance, security, support and operations management, and to create statistical analyses, industry benchmarks, best practice guidance, or similar reports, and/or (iii) for research and development purposes. HP owns all rights, title and interest, including all intellectual property rights in and to the Aggregated Data.
2. HP WXP Collaboration supports Windows®, Linux® and macOS® host environments and Windows, Linux, macOS, iPad®, Android®, and Chrome OS® end-user devices.
3. HP WXP Collaboration requires network access.
4. HP WXP Collaboration Space Insights is available through a 1- to 5-year access subscription.

This datasheet is governed by the [HP Portfolio Terms](#) for the country of the HP affiliate accepting the order or the terms provided to you by your HP Channel Partner. However, if you have a separately signed agreement with HP, such terms govern except to the extent that HP's Portfolio Terms for the country of delivery reflect local law or business practice. You may have additional statutory rights according to applicable local laws.

© Copyright 2025 HP Development Company, L.P. The information contained herein is subject to change without notice. The only warranties for HP products and services are set forth in the express warranty statements accompanying such products and services. Nothing herein should be construed as constituting an additional warranty. HP shall not be liable for technical or editorial errors or omissions contained herein.