

HIGH-DENSITY FIELD TERMINATED PLUG

Quick installs you can trust. Results you can count on.

The toolless Field Terminated Plugs provide fast, reliable Ethernet cable terminations. No specialty tools are required. Designed with installers in mind, these plugs simplify every step with a lacing sled and pre-attached wiring label, ensuring effortless, foolproof connections using only a pair of parallel-jaw pliers. Maximize efficiency and get more installations done, these plugs can be re-terminated up to five times, so mistakes won't slow you down.

Built for versatility, they accommodate cable diameters from 5–9 mm and work seamlessly with both solid (22–26 AWG) and stranded (23–27 AWG) conductors. Advanced printed circuitry reduces crosstalk, while 50-micron gold-plated contacts provide lasting signal integrity.

Ideal for high-density panels, racks, space-constrained setups, and Modular Plug Terminated Links (MPTL), these plugs are perfect for powering IP devices or managing critical connections. They help technicians work faster, with fewer errors and greater confidence.



Front



Back

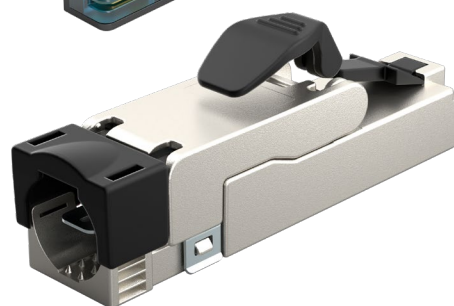
ITEM	DESCRIPTION
C2G01157	Cat6/5e Unshielded High-Density Field Terminated Modular Plug - 5 Pack
C2G01158	Cat6a Unshielded High-Density Field Terminated Modular Plug - 5 Pack
C2G01159	Cat6a Shielded High-Density Field Terminated Modular Plug - 5 Pack

HIGH-DENSITY FIELD TERMINATED PLUG

Quick installs you can trust. Results you can count on.

FEATURES

- **High-Density Design:** Compatible with most devices and suitable for side-by-side placement in equipment
- **Internal Printed Circuitry:** Controls and eliminates noise with fine-tuned performance for enhanced signal integrity
- **Installer-Friendly Wiring Guide:** T568A/B lacing sled seats aligns wires to ensure accurate, repeatable terminations and help prevent coupling
- **Insulation Displacement Contacts (IDCs):** Provide superior plug-to-cable contact for jack-like termination
- **Extended Distance Support:** Compatible with 100m+ channel applications when used with approved components
- Support PoE up to 100W and up to 1.5+ Amps per circuit trace
- **MPTL Compatibility:** Designed for use in Modular Plug Terminated Link (MPTL) installations and is field-testable
- Supports up to 10 Gbps data transfer rate for high-speed network connections
- **Re-Termination Capability:** Allows up to 5 re-terminations for greater installation flexibility
- **Plenum-Rated:** Safe for use in air-handling spaces
- **Wide Cable Support:** Accommodates 22–26 AWG solid conductor and 23–27 AWG stranded conductor
- Backed by 5-Year Warranty for peace of mind



HIGH-DENSITY FIELD TERMINATED PLUG

Specifications

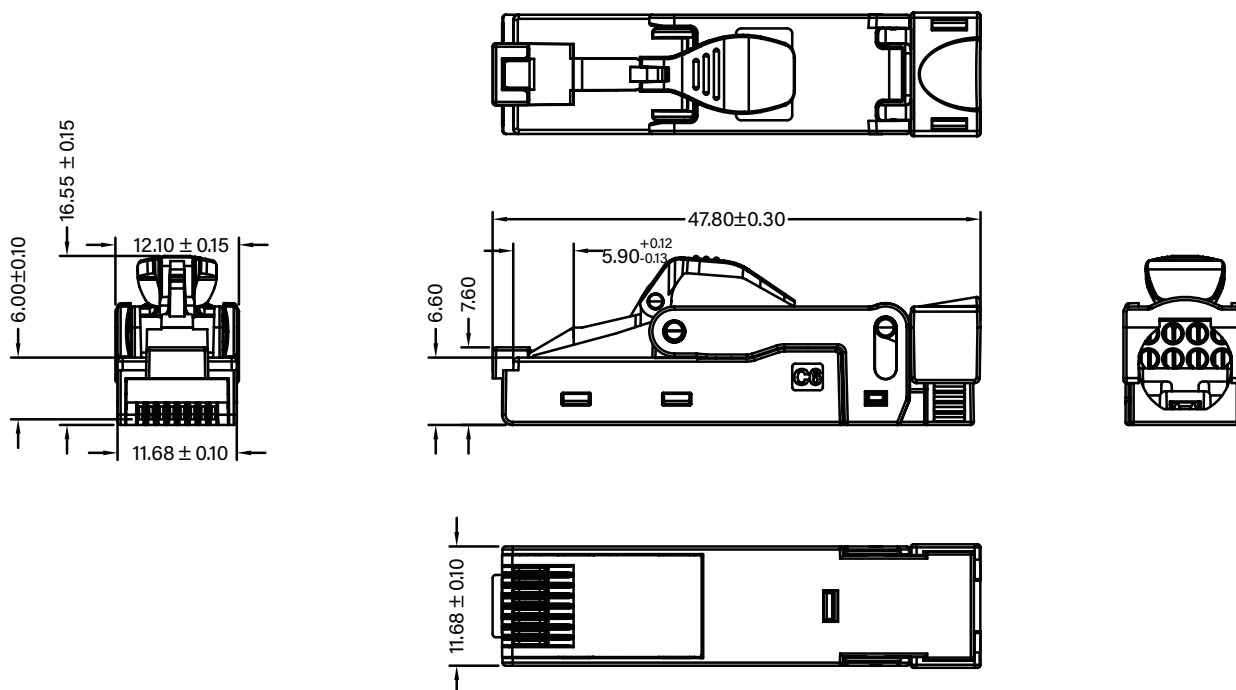
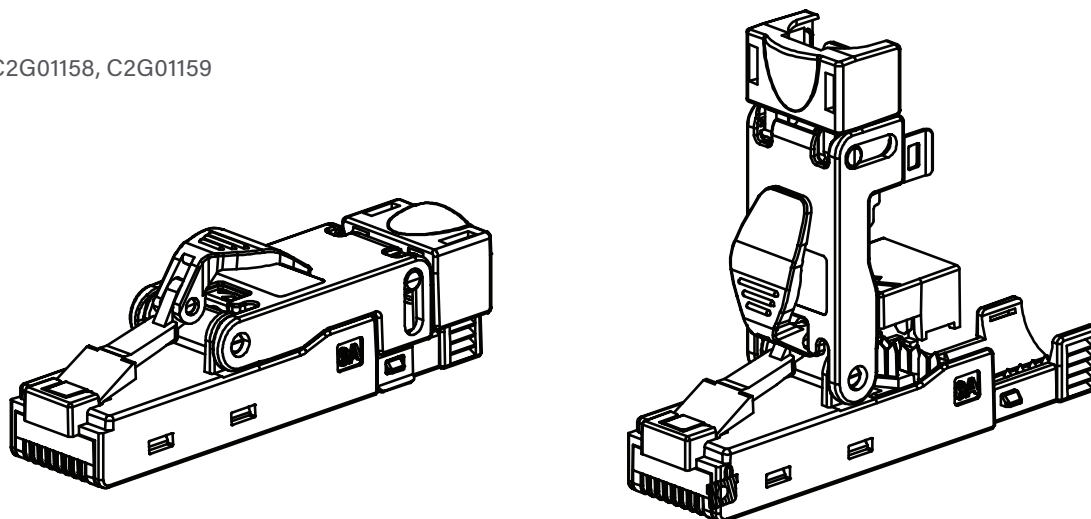
		C2G01157-C2G01159
ELECTRICAL SPECIFICATIONS	Current Rating	1.5A
	Contact/Contact Mated or Terminated Connector	1000V DC
	Insulation Resistance	500M Ω Min
	Contact Resistance	20m Ω Max
	Wiring Properties	22~27 AWG
	Supporting Cable Diameter	5~9mm
PHYSICAL CHARACTERISTICS	Dimensions (WxHxD)	1.88 x 0.65 x 0.46 in (47.8 x 16.5 x 11.7 mm)
	Connector	RJ-45
	Cable Type	C2G01157: Cat6/5e Unshielded
		C2G01158: Cat6a Unshielded
		C2G01159: Cat6a Shielded
	IDC Terminal Material	Bronze, Tin Plated
	IDC Housing Material	Plastic, Flame Retardant
	Color	C2G01157 and C2G01158: Black
		C2G01159: Silver
	Regulatory Approvals	ANSI/TIA/EIA-568.2-D
IEC 60603-7-5		
4PPoE compliant, IEEE802.bt Type 4		
UL 1863 Listed		
UL 2043 Certified		
ENVIRONMENTAL	Operating Temperature	-10 to 60°C (14 to 140°F)
	Storage Temperature	-40 to 70°C (-40 to 158°F)



HIGH-DENSITY FIELD TERMINATED PLUG

TECHNICAL DRAWINGS

C2G01157, C2G01158, C2G01159



LEGRAND | AV COMMERCIAL BRANDS

C2G | Chief | Da-Lite | Luxul | Middle Atlantic | Vaddio | Wiremold

SIMPLIFIED CONNECTIVITY

USA 800.506.9607 customer-service@c2g.com

APAC +852 2145 4099 av.asia.sales@legrand.com

EMEA +31 495 580 840 c2g.emea@av.legrand.com