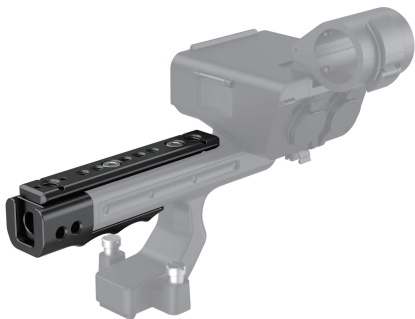


SmallRig



NATO Top Handle (Lite)

Operating Instruction

SmallRig Sony FX30 /FX3 XLR Handle Extension Rig MD3490 is designed to extend the length of the FX30 /FX3 XLR Handle and add more accessory mounting interfaces. The extension rig is installed at the end of the FX30 / FX3 XLR Handle by a 1/4"-20 screw, which can extend the FX30 / FX3 XLR Handle back by 30mm. It is ergonomically designed to provide users with a comfortable grip. In addition, the extension rig is also equipped with a NATO rail, which is installed on the top of the FX30/ FX3 XLR Handle by two 1/4"-20 screws. It provides more accessory installation interfaces for shooting scenes so that you can quickly install/release monitors, EVF, etc. The extension rig has Cold Shoe, multiple 1/4"-20, 3/8"-16 and ARRI 3/8"-16 accessory threads, providing multiple accessory mounting interfaces for shooting. In addition, the NATO rail can be removed and the extension rig can be used separate.

Safety Guidelines

1. Environment

Do not use the product underwater, in extreme temperatures (e.g., freezing or direct heat), corrosive environments, or excessive dust. Dry metal parts immediately after liquid contact to prevent corrosion.

2. Load Capacity

Do not exceed the maximum weight capacity indicated on the product. Overloading risks structural failure, deformation, or accidental drops.

3. Cleaning & Maintenance

Clean surfaces with a dry, soft cloth. Avoid chemicals like alcohol or solvents. Ensure dry and ventilated conditions for long-term storage.

4. Structural Integrity

Do not modify the product (e.g., drilling, cutting)—this compromises structural integrity and increases drop risks.

5. Malfunctions

Stop use immediately if you notice deformation, unusual noises, or loose components, and contact support.

In the Box

Sony FX30 / FX3 XLR Handle Extension Rig	× 1	NATO Rail	× 1
Hex Spanner	× 1	Guarantee Card	× 1

Product Details



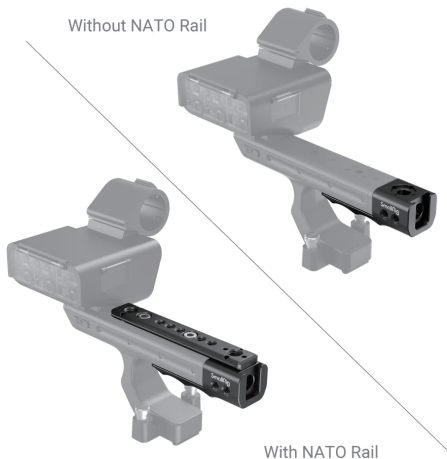
Key Features :

Sony FX30/FX3 XLR Handle dedicated extension rig.

Extend 30mm backwards and increase grip space.

Integrated Cold Shoe & removable NATO rail.

Multiple 1/4"-20 & 3/8"-16 & ARRI 3/8"-16 Accessory Threads.



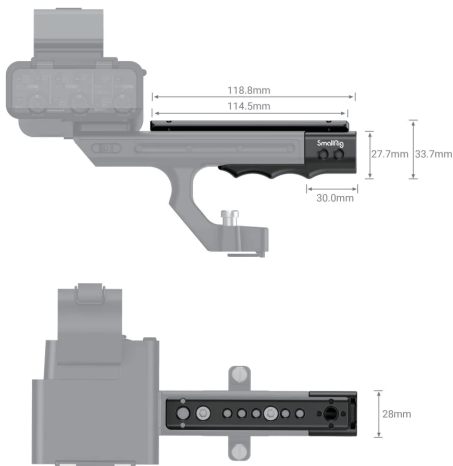
Compatibility:

Sony FX30 XLR Handle / Sony FX3 XLR Handle





Specifications



Product Dimensions: 118.8 x 33.7 x 28mm

Package Dimensions: 105 x 95 x 30mm

Net Weight: 90g±5g

Package Weight: 135g±5g

Material: Aluminum Alloy

Manufacturer Email: support@smallrig.com

Manufacturer: Shenzhen Leqi Innovation Co., Ltd.

Add: Rooms 101, 701, 901, Building 4, Gonglianfuji Innovation Park, No. 58, Ping'an Road,
Dafu Community, Guanlan Street, Longhua District, Shenzhen, Guangdong, China.

Consignor: Shenzhen LC Co., Ltd.

Add: Room 201, Building 4, Gonglianfuji Innovation Park, No. 58, Ping'an Road,
Dafu Community, Guanlan Street, Longhua District, Shenzhen, Guangdong, China.

RoHS



Séparez les éléments avant de trier



Made in China