


Dell 24 200Hz Monitor SE2425HG

Dell 27 200Hz Monitor SE2725HG

Teardown Instructions

Notes, cautions, and warnings

 **NOTE:** A NOTE indicates important information that helps you make better use of your product.

 **CAUTION:** A CAUTION indicates either potential damage to hardware or loss of data and tells you how to avoid the problem.


 **WARNING:** A WARNING indicates a potential for property damage, personal injury, or death.

Contents


Safety instructions	4
Before working inside your monitor	5
After working inside your monitor	5
Disassembly and reassembly	6
Recommended tools	6
Screw list	6
Stand	7
Removing the stand	7
Installing the stand	8
Back cover	9
Removing the back cover	9
Installing the back cover	10
LED board	11
Removing the LED board	11
Installing the LED board	12
Keypad board	13
Removing the keypad board	13
Installing the keypad board	14
Main chassis	15
Removing the main chassis	15
Installing the main chassis	17
Main board	19
Removing the main board	19
Installing the main board	20
Power board	21
Removing the power board	21
Installing the power board	22
Contacting Dell	23

Safety instructions

Use the following safety guidelines to protect your monitor from potential damage and to ensure your personal safety. Unless otherwise noted, each procedure in this document assumes that you have read the safety information that shipped with your monitor.

 **NOTE:** Before using the monitor, read the safety information that is shipped with your monitor and printed on the product. Keep the documentation at a secure location for future reference.

 **WARNING:** Use of controls, adjustments, or procedures other than those specified in this documentation may result in exposure to shock, electrical hazards and/or mechanical hazards.


 **CAUTION:** The possible long-term effect of listening to audio at high volume through the headphones (on monitors that support it) can damage your hearing ability.

- Place the monitor on a solid surface and handle it carefully.
 - The screen is fragile and can be damaged if dropped or pressed with a sharp object.
 - Ensure that your monitor is electrically rated to operate with the AC power available in your location.
 - Keep the monitor at room temperature. Excessive cold or hot conditions can have an adverse effect on the liquid crystal of the display.
 - Connect the power cable from the monitor to a wall outlet that is near and accessible. See [Connecting your monitor](#).
- Do not place or use the monitor on a wet surface or near water.
- Do not subject the monitor to severe vibration or high impact conditions. For example, do not place the monitor inside a car trunk.
- Unplug the monitor when it is going to be left unused for an extended period.
- To avoid electric shock, do not attempt to remove any cover or touch the inside of the monitor.
- Read these instructions carefully. Keep this document for future reference. Follow all warnings and instructions that are marked on the product.
- Certain monitors can be wall-mounted using the VESA mount that is sold separately. Ensure to use the correct VESA specifications as mentioned in the wall-mounting section of the User's Guide.

For information about safety instructions, see the *Safety, Environmental, and Regulatory Information (SERI)* document that is shipped with your monitor.

Before working inside your monitor

Steps

1. Save and close all open files and exit all running applications.
2. Turn off your monitor.
3. Disconnect your monitor and all attached devices from their electrical outlets.
4. Disconnect all attached network devices and peripherals, such as the keyboard, mouse, and dock from your monitor.
 **WARNING:** To disconnect a network cable, first unplug the cable from your monitor and then unplug the cable from the network device.
5. Remove any media card and optical disc from your monitor, if applicable.

After working inside your monitor

 **CAUTION:** Leaving stray or loose screws inside your monitor may severely damage it.

Steps

1. Replace all screws and ensure that no stray screws remain inside your monitor.
2. Connect any external devices, peripherals, or cables you removed before working on your monitor.
3. Reinsert any media cards, discs, or any other parts that you removed before working on your monitor.
4. Connect your monitor and all attached devices to their electrical outlets.
5. Turn on your monitor.

Disassembly and reassembly

CAUTION: The information in this section is intended for authorized service technicians in the EMEA region. Dell prohibits users from disassembling the monitor, and any damage that is caused by unauthorized servicing will not be covered under the warranty.

Recommended tools







Tool Description:

- Phillips screwdriver #0
- Phillips screwdriver #2
- Penknife

Screw list

- NOTE:** When removing screws from a component, it is recommended to note the screw type, the quantity of screws, and then place them in a screw storage box. This is to ensure that the correct number of screws and correct screw type is restored when the component is replaced.
- NOTE:** Some monitors have magnetic surfaces. Ensure that the screws are not left attached to such surfaces when replacing a component.
- NOTE:** Screw color may vary depending on the configuration ordered.

Table 1. Components and descriptions.

Component	Screw type	Quantity	Screw image
Back cover	M4x6	2	
Main chassis	M3x3	3	
Key board	M2x3.3	2	
Main Board	M3x6	2	
Power board groundwire	M4x8	1	
Power board	M3x6	3	

Stand

Removing the stand

Prerequisites

1. Follow the procedure in [Before working inside your monitor.](#)



Figure 1. Removing the stand

Steps

1. Place the monitor on a soft cloth or cushion on the desk.
2. Use a long, thin screwdriver to push the release button.
3. While keeping the release button pressed, pull the stand out from the monitor.
4. Press the quick-release tab on the bottom of the base to separate the stand base from the stand riser.

Installing the stand

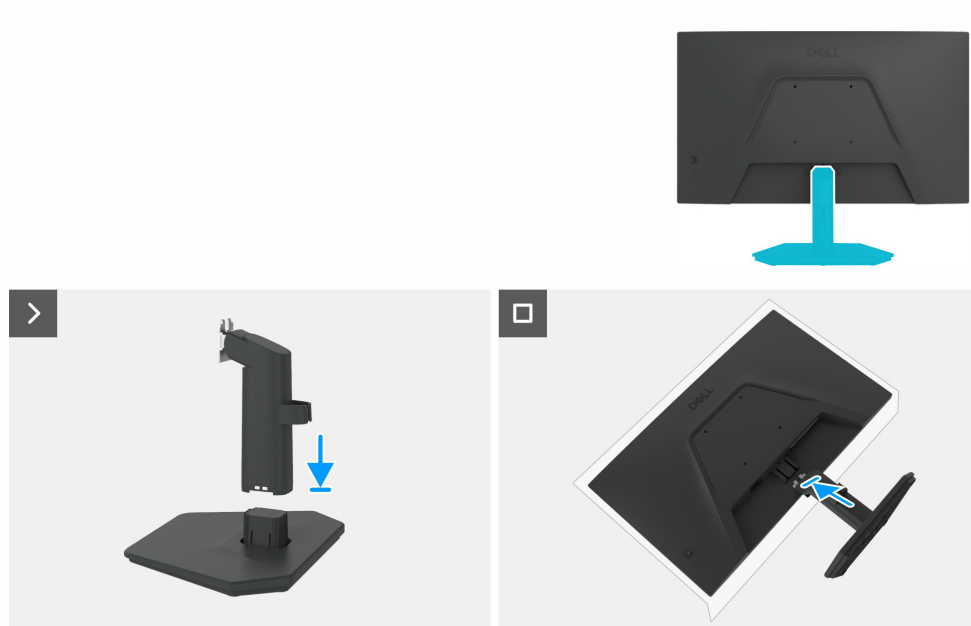


Figure 2. Installing the stand

Steps

1. Place the monitor stand base on a stable tabletop.
2. Slide the monitor stand body down onto the stand base in the correct direction until it clicks into place.
3. Place the monitor on a soft cloth or cushion near the edge of the desk.
4. Align the stand assembly bracket with the groove on the back of the monitor.
5. Insert the stand assembly into the monitor until it locks in place.

Next steps

1. Follow the procedure in [After working inside your monitor.](#)

Back cover

Removing the back cover

Prerequisites

1. Follow the procedure in [Before working inside your monitor.](#)
2. Remove the [stand](#).

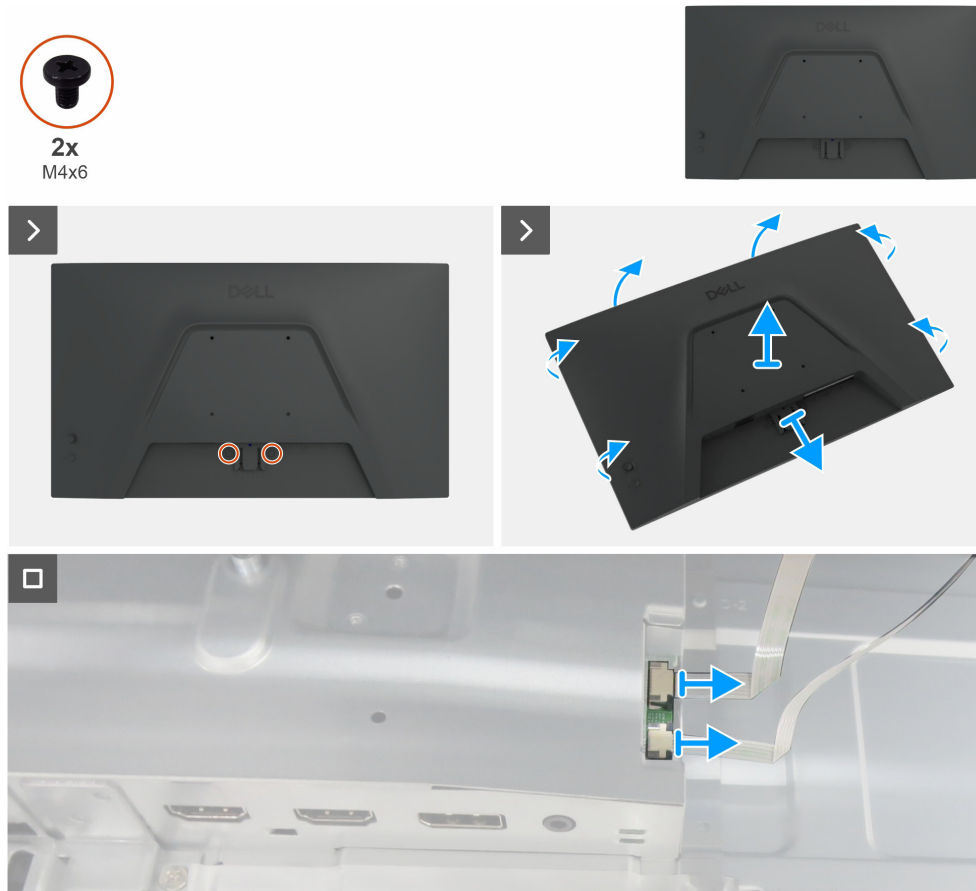


Figure 3. Removing the back cover

Steps

1. Remove the two screws (M4x6) to release the back cover.
2. Using both hands, gently pry the back cover off, starting from the top side, then moving to the left and right sides.
3. Partially lift the back cover from the bottom edge.
4. Disconnect the keypad cable and LED cable from their connectors on the main board.
5. Remove the back cover from the display assembly.

Installing the back cover

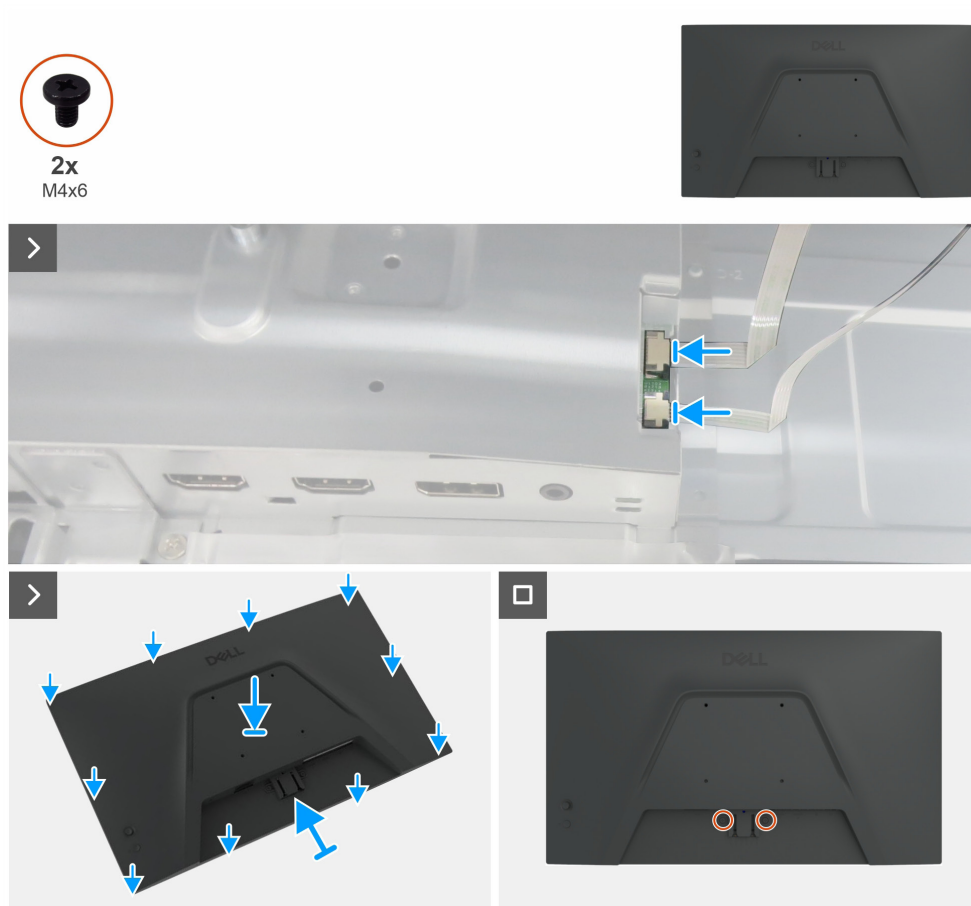


Figure 4. Installing the back cover

Steps

1. Connect the keypad cable and LED cable to the connectors on the main board.
2. Align the slots on the back cover with the slots on the main chassis, then press along the sides to snap the back cover into place.
3. Replace the two screws (M4x6) to secure the back cover to the monitor.

Next steps

1. Install the [stand](#).
2. Follow the procedure in [After working inside your monitor](#).

LED board

Removing the LED board

Prerequisites

1. Follow the procedure in [Before working inside your monitor.](#)
2. Remove the [stand.](#)
3. Remove the [back cover.](#)

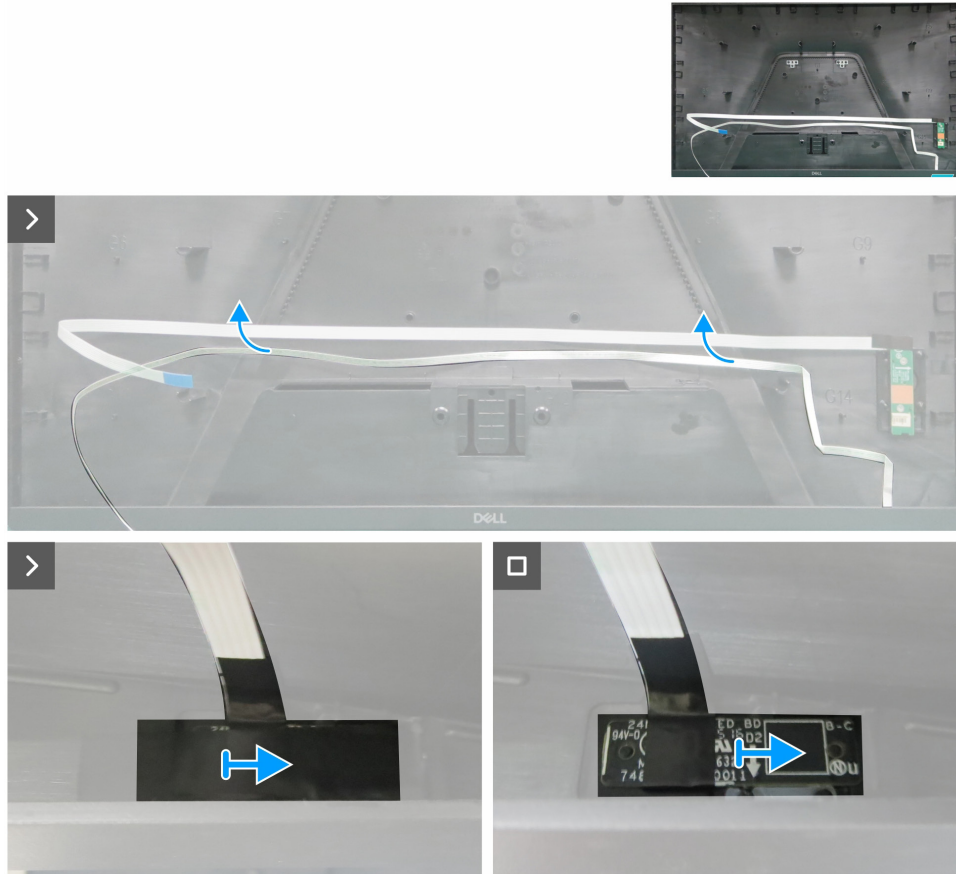


Figure 5. Removing the LED board

Steps

1. Peel off the double-sided tape that secures the LED cable to the back cover.
2. Peel the Mylar tape from the LED board.
3. Remove the LED board from the pins on the back cover.

Installing the LED board

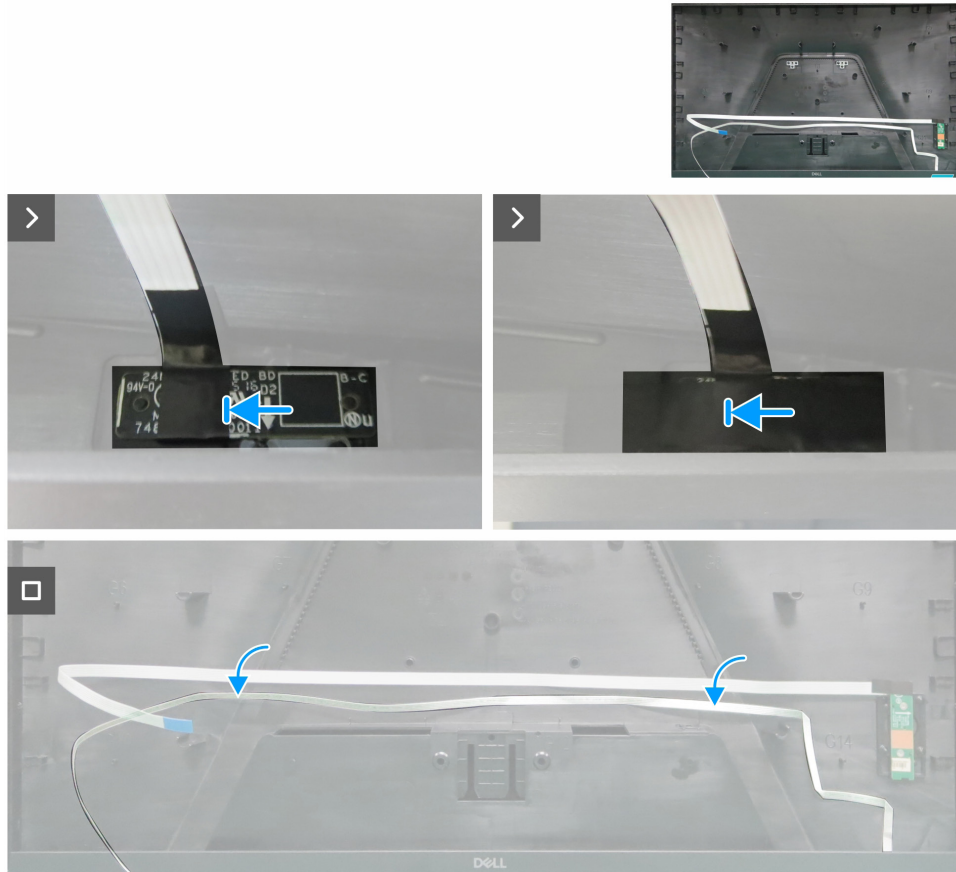


Figure 6. Installing the LED board

Steps

1. Align the holes on the LED board with the pins on the back cover, and place it down.
2. Adhere the Mylar tape to cover the LED board.
3. Adhere the double-sided tape to secure the LED cable to the back cover.

Next steps

1. Install the [back cover](#).
2. Install the [stand](#).
3. Follow the procedure in [After working inside your monitor](#).

Keypad board

Removing the keypad board

Prerequisites

1. Follow the procedure in [Before working inside your monitor.](#)
2. Remove the [stand.](#)
3. Remove the [back cover.](#)
4. Remove the [LED board.](#)

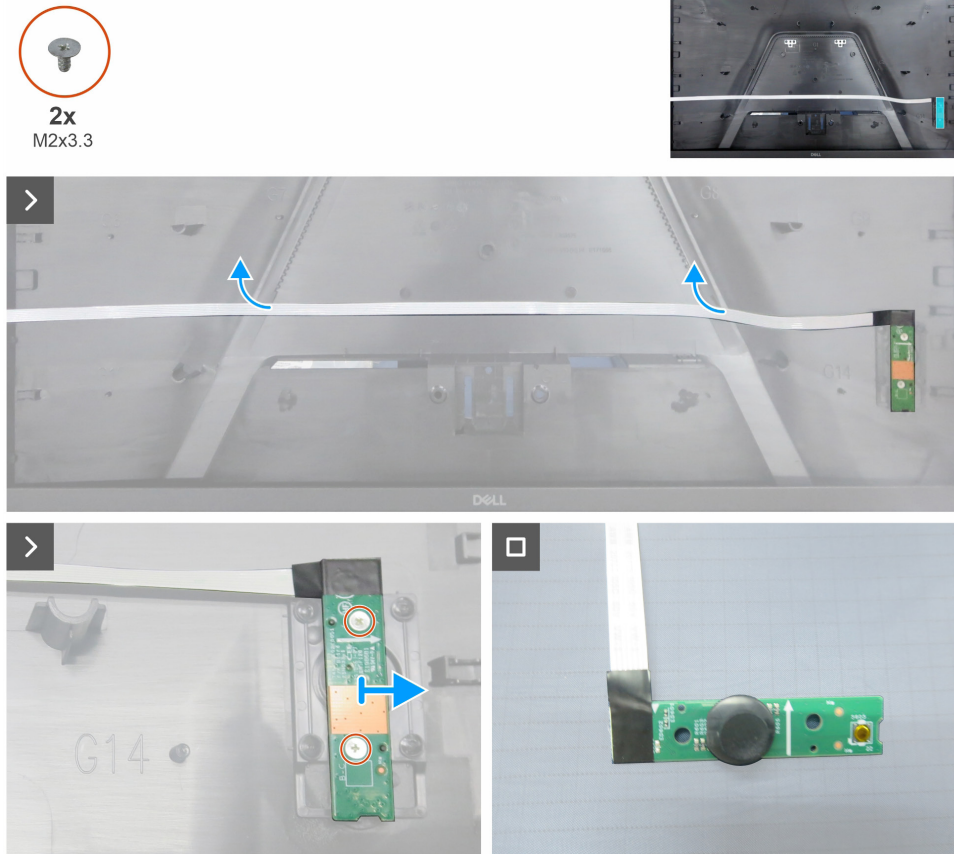


Figure 7. Removing the keypad board

Steps

1. Peel off the double-sided tape that secures the keypad cable to the back cover.
2. Remove the two screws (M2x3.3) that secure the keypad board to the back cover.
3. Remove the keypad board from the pins on the back cover.
4. Remove the joystick key from the keypad board.

Installing the keypad board

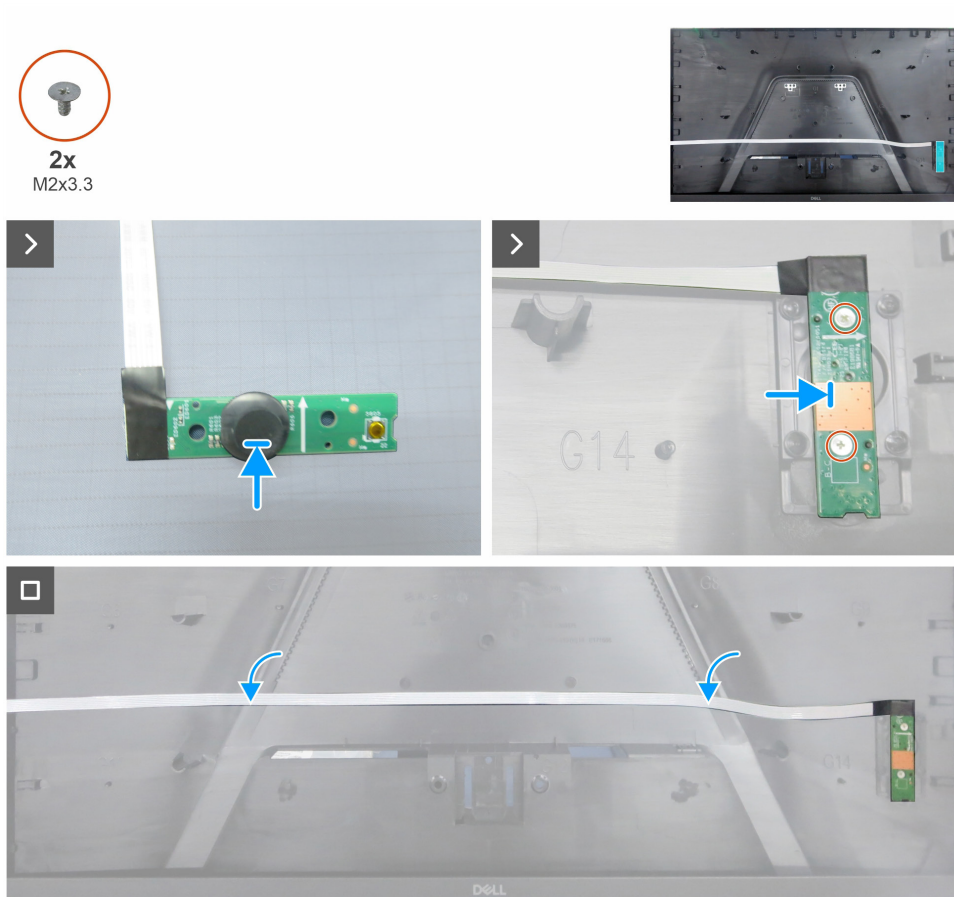


Figure 8. Installing the keypad board

Steps

1. Attach the joystick key to the keypad board.
2. Align the holes on the keypad board with the screw holes on the back cover, and place it down.
3. Replace the two screws (M2x3.3) that secure the keypad board to the back cover.
4. Adhere the double-sided tape to secure the keypad cable to the back cover.

Next steps

1. Install the [LED board](#).
2. Install the [back cover](#).
3. Install the [stand](#).
4. Follow the procedure in [After working inside your monitor](#).

Main chassis

Removing the main chassis

Prerequisites

1. Follow the procedure in [Before working inside your monitor.](#)
2. Remove the [stand.](#)
3. Remove the [back cover.](#)
4. Remove the [LED board.](#)
5. Remove the [keypad board.](#)

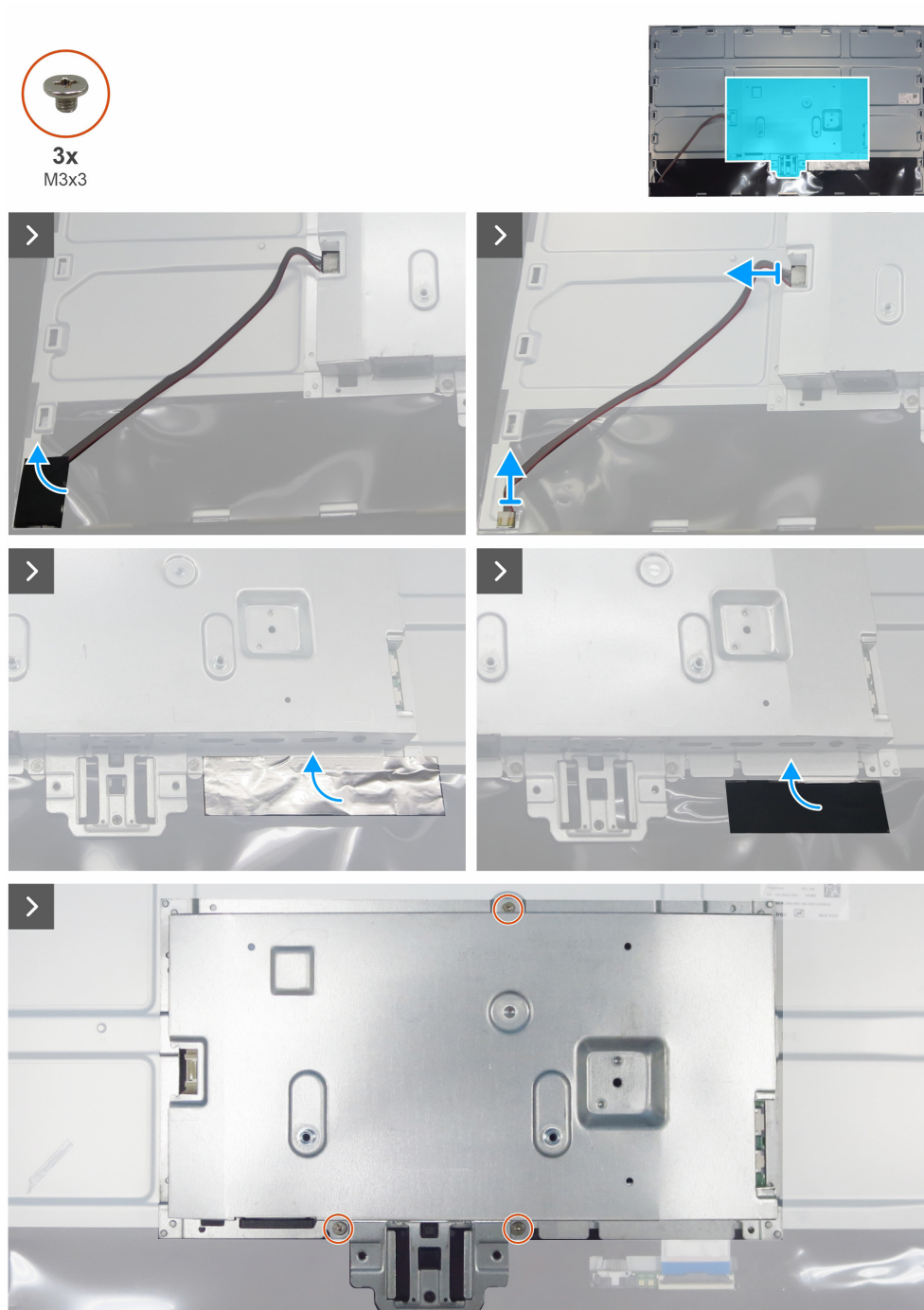


Figure 9. Removing the main chassis

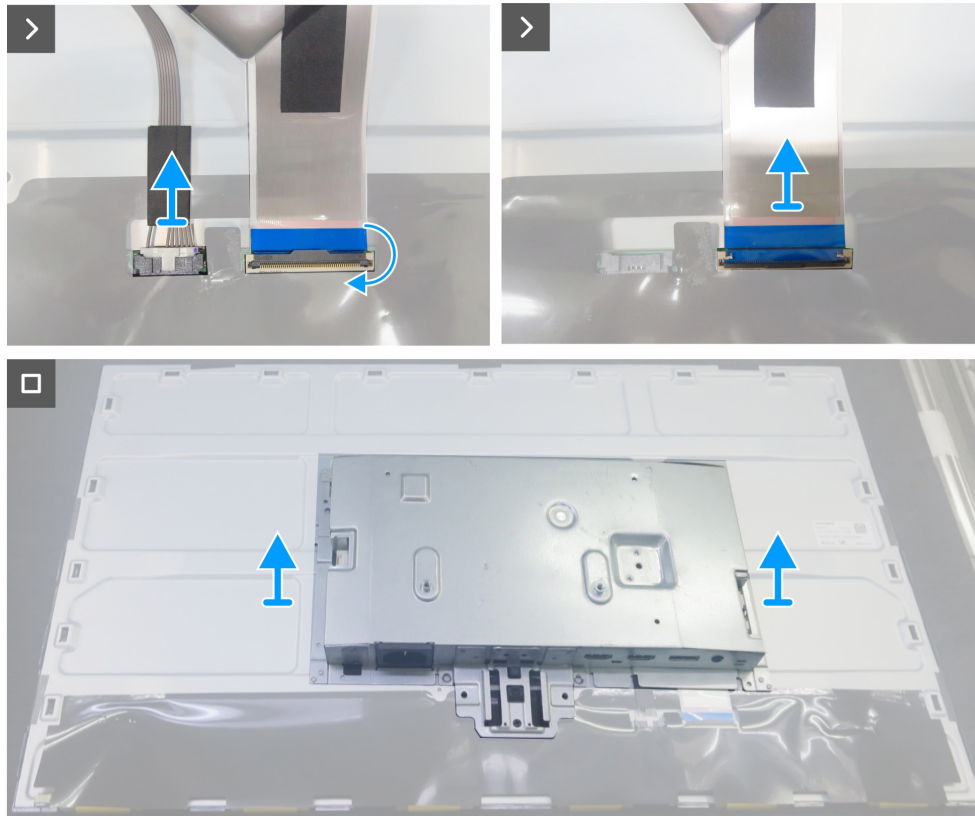


Figure 10. Removing the main chassis

Steps

1. Peel off the acetate tape and disconnect the lightbar cable from the connectors on the display panel and power board.
2. Peel off the aluminum foil and tape from the two connectors.
3. Remove the three screws (M3x3) that secure the main chassis to the display panel.
4. Disconnect the LVDS cable and T-CON cable from the connectors on the display panel.
5. Lift and remove the main chassis from the display panel.

Installing the main chassis

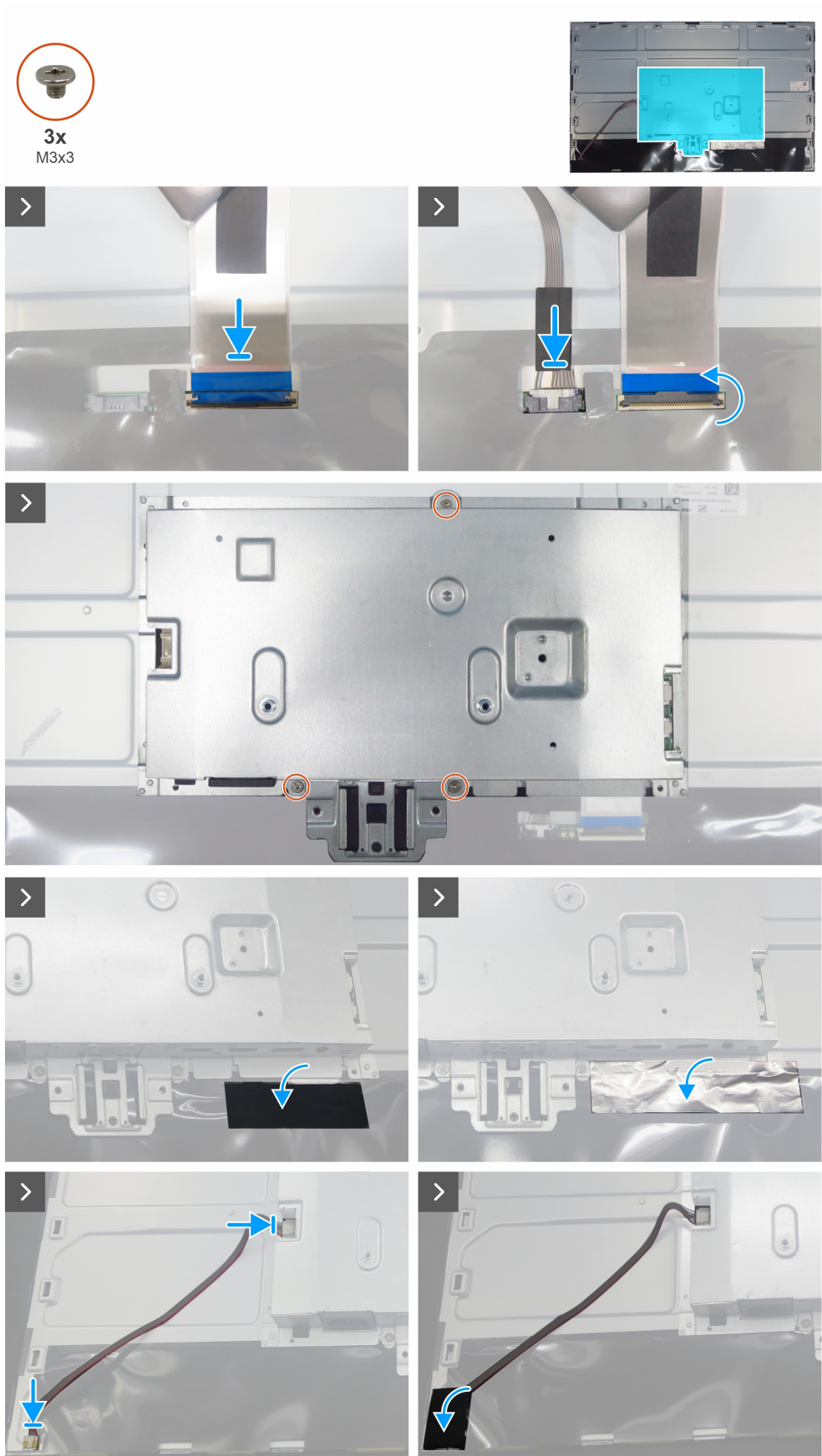


Figure 11. Installing the main chassis

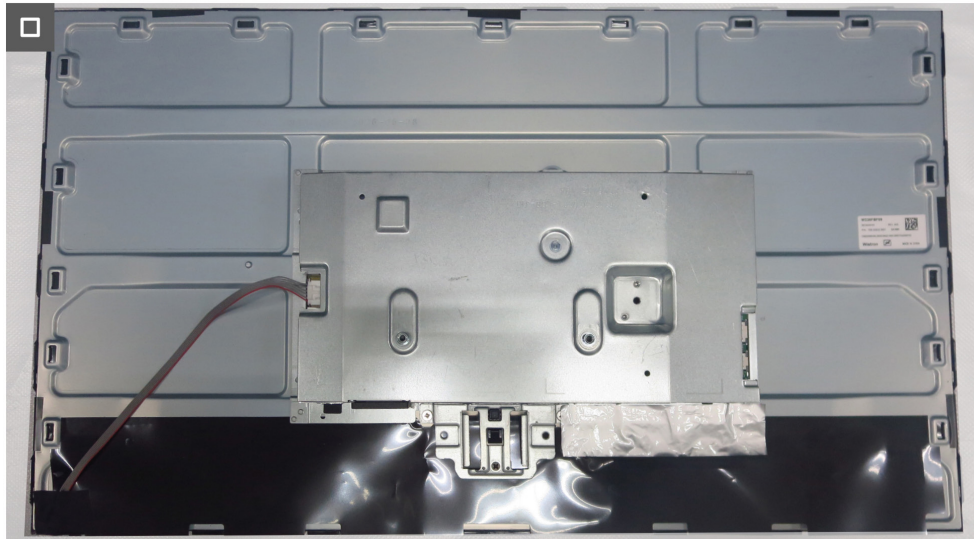


Figure 12. Installing the main chassis

Steps

1. Connect the LVDS cable and T-CON cable to the connectors on the display panel.
2. Align the holes on the main chassis with the screw holes on the display panel, and place it down.
3. Replace the three screws (M3x3) that secure the main chassis to the display panel.
4. Adhere the acetate tape to cover the LVDS and T-CON connectors.
5. Adhere the aluminum foil to cover the LVDS and T-CON connectors.
6. Connect the lightbar cable to the display panel and power board.
7. Adhere the acetate tape to cover the lightbar connector.

Next steps

1. Install the [keypad board](#).
2. Install the [LED board](#).
3. Install the [back cover](#).
4. Install the [stand](#).
5. Follow the procedure in [After working inside your monitor](#).

Main board

Removing the main board

Prerequisites

1. Follow the procedure in [Before working inside your monitor.](#)
2. Remove the [stand.](#)
3. Remove the [back cover.](#)
4. Remove the [LED board.](#)
5. Remove the [keypad board.](#)
6. Remove the [main chassis.](#)

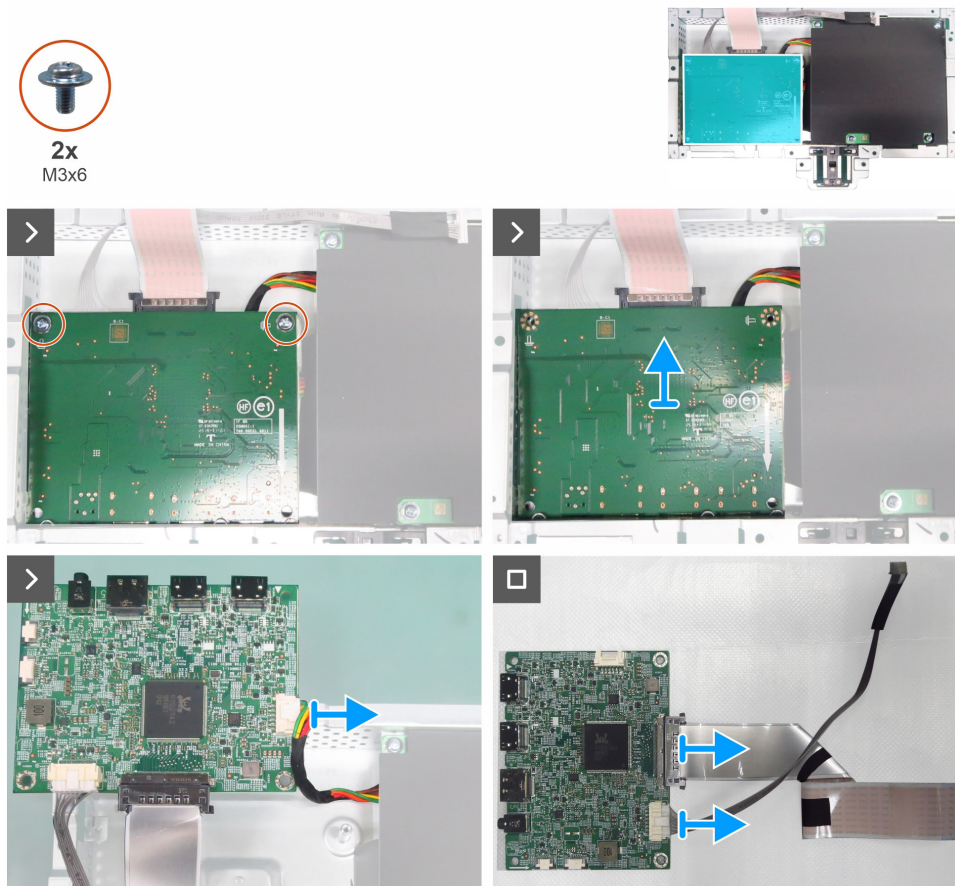


Figure 13. Removing the main board

Steps

1. Remove the two screws (M3x6) that secure the main board to the main chassis.
2. Disconnect the power cable from the main board.
3. Remove the main board, and disconnect the T-CON and LVDS cables from their connectors on the main board.

Installing the main board

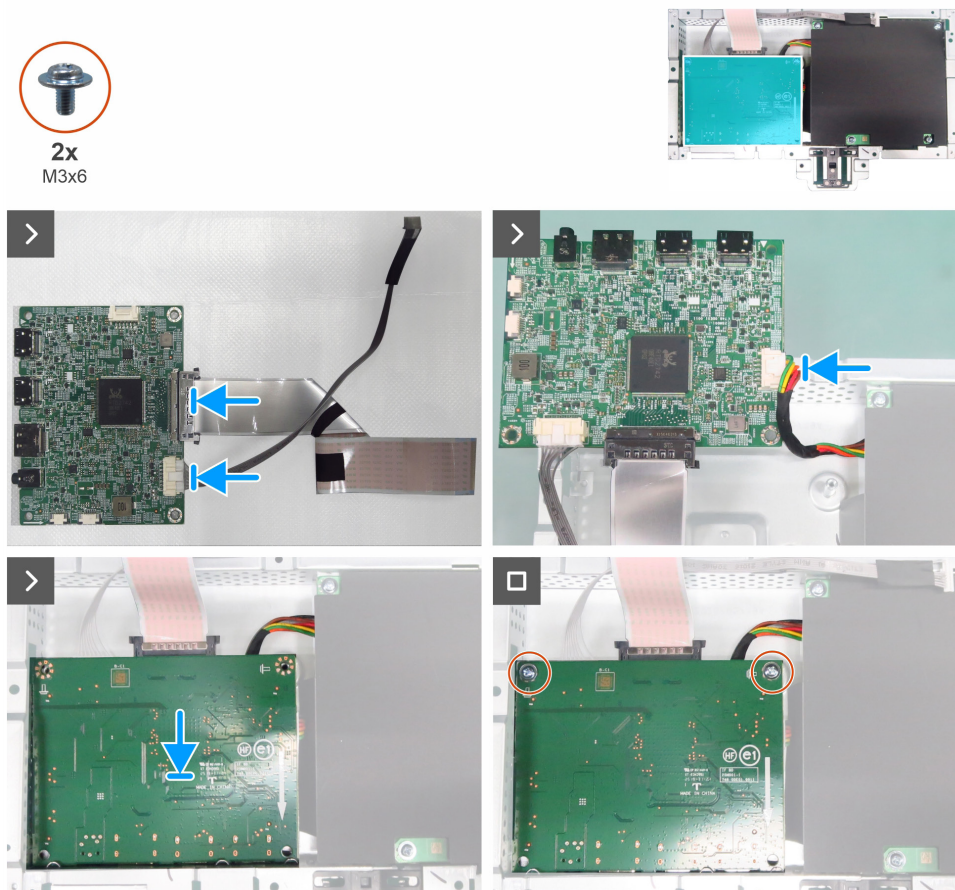


Figure 14. Installing the main board

Steps

1. Connect the T-CON and LVDS cables to the connectors on the main board.
2. Connect the power cable to the main board and then place the main board onto the main chassis.
3. Align the screw holes on the main board with the screw holes on the main chassis, and place it down.
4. Replace the two screws (M3x6) to secure the main board to the main chassis.

Next steps

1. Install the [main chassis](#).
2. Install the [keypad board](#).
3. Install the [LED board](#).
4. Install the [back cover](#).
5. Install the [stand](#).
6. Follow the procedure in [After working inside your monitor](#).

Power board

Removing the power board

Prerequisites

1. Follow the procedure in [Before working inside your monitor.](#)
2. Remove the [stand.](#)
3. Remove the [back cover.](#)
4. Remove the [LED board.](#)
5. Remove the [keypad board.](#)
6. Remove the [main chassis.](#)
7. Remove the [main board.](#)

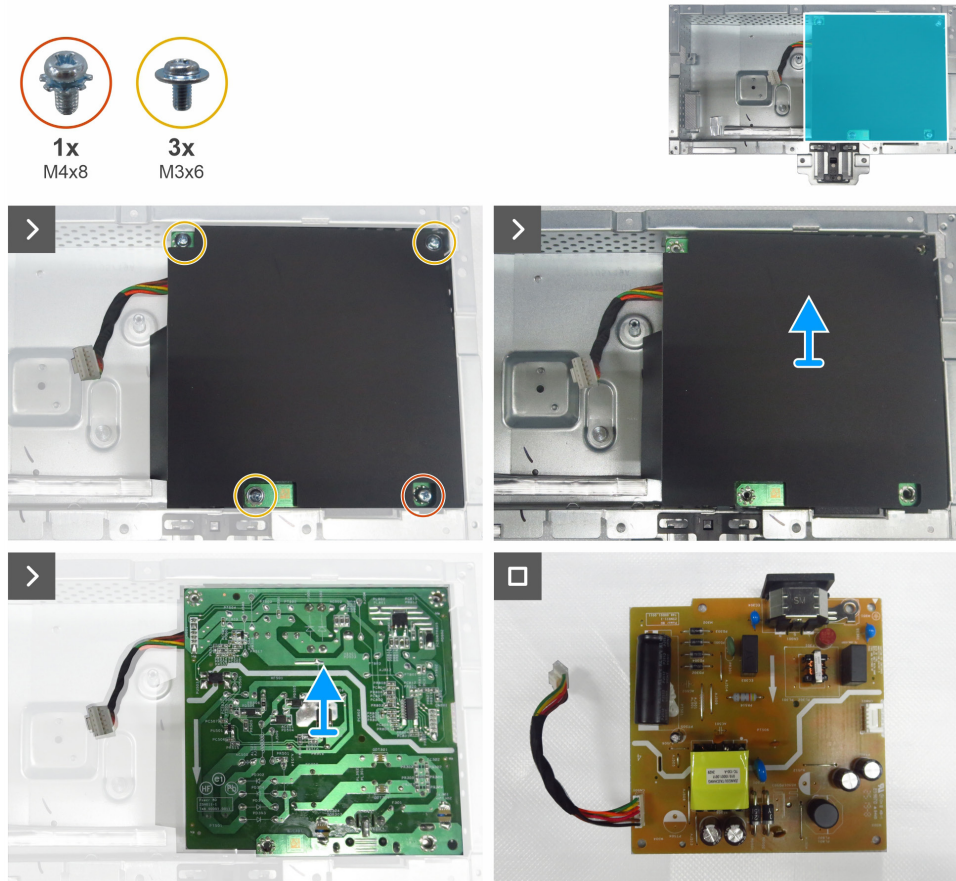


Figure 15. Removing the power board

Steps

1. Remove the screw (M4x8) and the three screws (M3x6) that secure the Mylar sheet and power board to the main chassis.
2. Remove the Mylar sheet from the slots in the main chassis.
3. Remove the power board from the main chassis.

Installing the power board

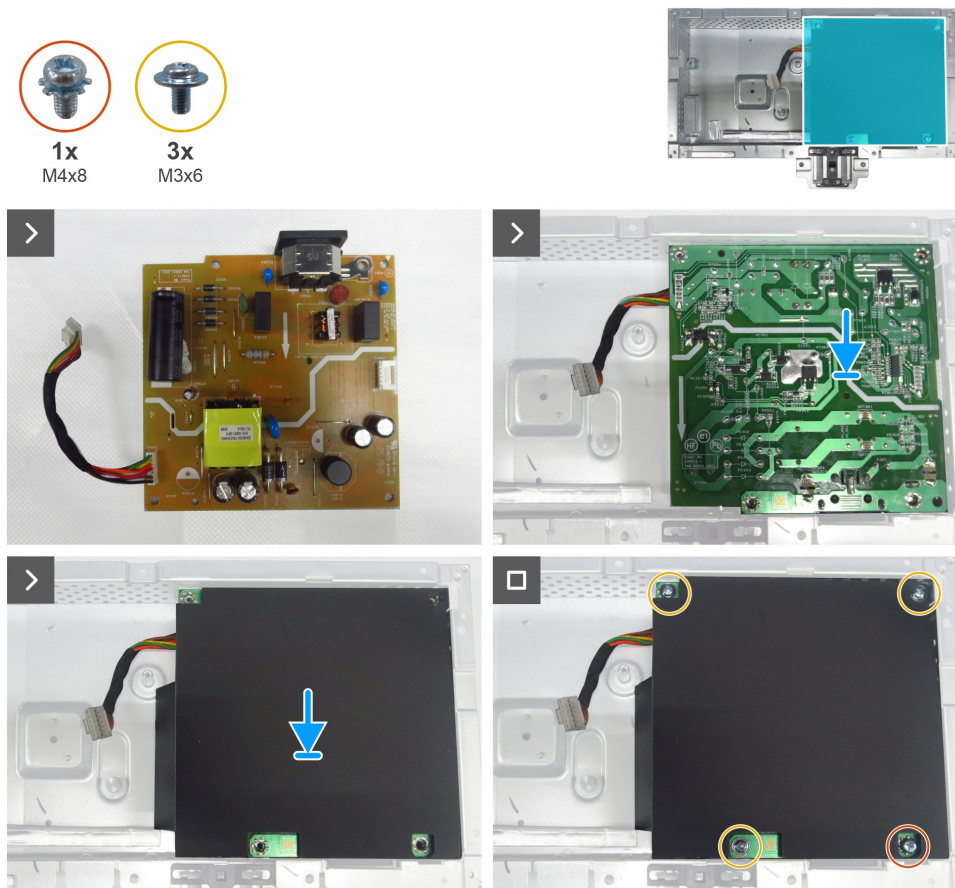


Figure 16. Installing the power board

Steps

1. Align the screw holes on the power board with the screw holes on the main chassis, and place it down.
2. Insert the Mylar sheet into the slots on the main chassis.
3. Replace the three screws (M3x6) and the one screw (M4x8) that secure the power board to the main chassis.

Next steps

1. Install the [main board](#).
2. Install the [main chassis](#).
3. Install the [keypad board](#).
4. Install the [LED board](#).
5. Install the [back cover](#).
6. Install the [stand](#).
7. Follow the procedure in [After working inside your monitor](#).

Contacting Dell

To contact Dell for sales, technical support, or customer service issues, see [Contact Support at Dell Support Site](#).

- ① **NOTE:** Availability varies by country or region and product, and some services may not be available in your country or region.
- ① **NOTE:** If you do not have an active Internet connection, you can find contact information about your purchase invoice, packing slip, bill, or Dell product catalog.