

HPE Morpheus Enterprise Software QuickSpecs

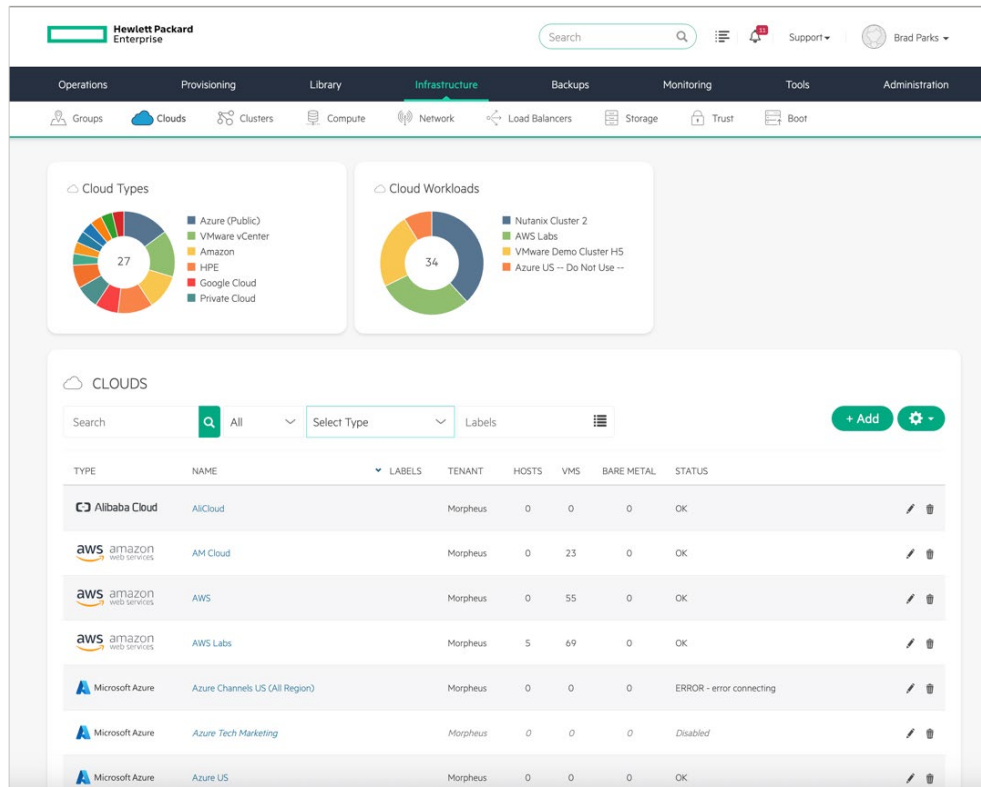
In an era of digital transformation, speed and agility of application modernization is key to success.

Unfortunately, it can take IT weeks to deliver new application stacks when requested because of manual hand-offs across a fragmented set of 'software-definable' technologies on-premises. This inefficiency has led internal IT consumers to often bypass IT in favor of public cloud application services which raises cloud costs and opens security holes.

Born to provide simple and consistent provisioning of VMs, Containers, and Applications into any private or public cloud, HPE Morpheus Enterprise Software enables IT to become a true internal service provider for the business. It brings the cloud experience on-premises, extends governance to the public clouds, and bridges the gaps between technology, people, and process.

Overview

HPE Morpheus Enterprise Software was uniquely engineered for platform engineering; it enables different enterprise teams to each get what they need from hybrid cloud management. IT and platform teams can quickly integrate tooling and dependencies without scripting, standardize cloud management, simplify server builds, and automate lifecycle tasks. Infrastructure and security teams can connect third-party identity providers, map groups & roles, establish role-based access controls, enforce policies, manage and rotate secrets, and more. Development teams, data analytics professionals, and other IT users, get on-demand provisioning of application services and stacks consistently across runtimes and clouds via GUI, ITSM plugin, IaC provider, full API/CLI, and CI/CD pipelines. Lastly, Managed Service Providers can use HPE Morpheus Enterprise as a white-labeled and multi-tenant portal to provide services and meter usage to be used in customer billing.



Standard Features

Features

Enable Self-service Provisioning of any Workload into any Cloud On-demand

- Integrate Hypervisors, Public Clouds, Kubernetes Clusters, IP address management, DNS, Load Balancers, IT Service Management, Backup Tools, Automation Tasks, and more into framework to automate workload deployment.
- Turn existing 'brownfield' hypervisors into a true private cloud by easily connecting to VMware, Nutanix, Microsoft, Oracle, OpenStack, etc. Unify public cloud access by connecting to AWS, Azure, GCP, OCI, etc.
- Eliminate manual handoffs and orchestrate the tools and dependencies for catalog-based deployment of Bare Metal (BMaaS), VMs (IaaS / VMaaS), containers (CaaS), App Services (PaaS), multi-tier application stacks, and public cloud services.
- Associate automation tasks to the lifecycle phases of workloads so IT processes can be consistently applied at startup, shutdown, reconfigure, teardown, etc. Task support includes Ansible, Chef, Salt, PowerShell, Bash, and more.
- Trigger provisioning activities through your interface of choice including a simple self-service catalog GUI, powerful advanced GUI interface, full fidelity API/CLI for integration into CI/CD pipelines, or leverage ITSM tools such as ServiceNow®.

Provision Built-in KVM and Kubernetes Runtime Options for Flexibility and Choice

- Deploy and manage HPE's HVM hypervisor clusters. Based on KVM, this built-in runtime includes external storage support, VM live migration, storage live migration, data protection, and other features to host virtualized workloads.
- Use the built-in CNCF certified Kubernetes Service (HKS) to deploy K8s on any attached cloud. Includes open-source components such as Prometheus, Grafana, Calico and others to quickly get started with containers.
- Create custom K8s cluster layouts to deploy distributions such as Rancher's K3s, Red Hat OpenShift, or vanilla upstream K8s as well as enable provisioning of cloud-managed Kubernetes clusters like AWS EKS, Azure AKS and Google GKE.
- Quickly view status and health of VME and Kubernetes clusters across your environment to simplify operations, view cluster metrics and logs, and provide lifecycle management of HPE native VME and HKS cluster types.

Set Governance Guardrails so Users and Teams have a Paved Road to Hybrid Cloud

- Govern tenants, teams, and users by connecting to corporate identity providers and using SSO. Map groups and users into fine-grained role-based access control (RBAC) guardrails with dozens of policies for infrastructure and lifecycle.
- Improve your overall security posture by ensuring consistent golden template use, embedding security agents at provision time, locking down access, rotating credentials, managing secrets, and auditing all activity.

Standard Features

- Utilize multi-tenancy to fully segregate which teams and users have access to different cloud environments. Share hypervisors and clouds across multiple tenants or let tenants have their own individual cloud accounts.

Embrace FinOps and Lower Cost with Cross Cloud Visibility and Insight

- Automatically discover and inventory existing instances and objects across all private and public clouds, run analytics to find problems and implement guidance recommendations for cloud cost saving.
- Go beyond reporting to fix cost issues at their source. Set budget guardrails and power schedules, limit clouds and plans by role, plus provide cloud cost comparisons at provision time for end-user empowerment.
- Centralize cost and usage data across on-premises and public cloud. Track costs and usage for every tenant, user, group, tag, app, cloud, and more for private infrastructure and public cloud including public cloud invoice synchronization.

For a complete set of up-to-date technical information and integration guides please visit the:

[HPE Morpheus Enterprise documentation](#) site.

Configuration Information

Architecture and Requirements

HPE Morpheus Enterprise is a software-based appliance installation capable of orchestrating many clouds and hypervisors. Before an installation is started it is important to understand some of the base requirements. HPE Morpheus Enterprise provides a wide array of options when it comes to deployment architectures. It can start as a simple one machine instance where all services run on the same machine, or it can be split off into individual services per machine and configured in a high availability configuration, either in the same region or cross-region.

There are four primary tiers of services represented within the Morpheus appliance. They are the Application Tier, Transactional Database Tier, Non-Transactional Database Tier, and Message Tier. Each of these tiers have their own recommendations for High availability deployments that we need to cover.

Configuration options:

- Single Host (All-In-One/default): All tiers running on a single host. The reconfigure process installs all required services. This is the default configuration.
- Single Hosts with Distributed Service(s): Transactional Database, Non-Transactional Database, and/or Message tiers are externalized, with the remaining services on a single host.
- Clustered Hosts with Distributed Transactional Database (3-Node HA): Application, Message and Non-Transactional tiers are installed and clustered on three or more hosts, with all three hosts pointing to externalized database tier.
- App Host(s) with Distributed Services (Full HA): Application tier is installed on one or more hosts. All UI hosts point to externalized Transactional Database, Non-Transactional Database, and Message Tiers.

Additional configuration detail available at the [HPE Morpheus Enterprise documentation](#) site.

Product, Services, and Licensing Considerations

Hewlett Packard Enterprise is making the following HPE Morpheus Enterprise Software SKUs available as term-based licensed software, not a fully managed SaaS deployment. This makes HPE Morpheus Enterprise an excellent choice for highly regulated environments with tight security guidelines.

HPE Morpheus Enterprise Software SKUs are licensed per physical CPU socket for any connected on-premises cloud including Bare Metal (BMaaS) servers, hypervisor hosts, and Kubernetes worker nodes.

HPE Morpheus Enterprise Software can also be used to provision workloads into public clouds like AWS, Azure, GCP, and more; public cloud workloads are factored at a 15 workload to 1 socket ratio. For example, 15 AWS EC2 instances would consume 1 socket license.

New installations require installation and configuration services provided by HPE. All software licenses for HPE Morpheus Enterprise include 24x7 support in the form of HPE Tech Care Essentials as part of the license cost. HPE also highly recommends that customers attend the HPE Morpheus Enterprise – Administration training class to fully take advantage of the capabilities of the platform.

Configuration Information

You can upgrade from HPE Morpheus VM Essentials to the full capabilities of HPE Morpheus Enterprise using the upgrade options below. Upgrade licenses can be applied to an existing installation however you should consult with HPE on any suggested architectural considerations. You can also apply additional licenses to an existing installation and 'stack' licenses with differing term lengths.

HPE Morpheus Enterprise Software

Description	SKU
HPE Morpheus Enterprise Software per Socket (15 WLE) 1-year 24x7 Support New Install E-LTU	S6E64AAE
HPE Morpheus Enterprise Software per Socket (15 WLE) 3-year 24x7 Support New Install E-LTU	S6E66AAE
HPE Morpheus Enterprise Software per Socket (15 WLE) 5-year 24x7 Support New Install E-LTU	S6E68AAE
HPE Morpheus Enterprise Software per Socket (15 WLE) 1-year 24x7 Support Extension/Renewal E-LTU	S6E59AAE
HPE Morpheus Enterprise Software per Socket (15 WLE) 3-year 24x7 Support Extension/Renewal E-LTU	S6E61AAE
HPE Morpheus Enterprise Software per Socket (15 WLE) 5-year 24x7 Support Extension/Renewal E-LTU	S6E63AAE
HPE Morpheus VM Essentials to Morpheus Enterprise Software Upgrade 1-year 24x7 Support E-LTU	S6E69AAE
HPE Morpheus VM Essentials to Morpheus Enterprise Software Upgrade 3-year 24x7 Support E-LTU	S6E71AAE
HPE Morpheus VM Essentials to Morpheus Enterprise Software Upgrade 5-year 24x7 Support E-LTU	S6E73AAE

HPE Morpheus Services

Description	SKU
HPE Morpheus Software Installation - standard	HA124A1#V38
HPE Morpheus Software High Availability - enhancement	HA124A1#V39
HPE Morpheus Enterprise SW Quickstrt SVC	H46SBA1

Notes: For fully advanced services and custom statements of work, please work with the HPE Advisory and Professional Services (HPE A&PS) team. HPE A&PS have a full set of consulting and services focused on HPE Morpheus Software for multi-cloud management. <https://www.hpe.com/psnow/doc/a00141555enw>

HPE Morpheus Training and Education

Description	SKU
HPE Morpheus Software – Administration	H45ZD
HPE Morpheus Software - Automation & Advanced Provisioning	H45ZC
HPE Morpheus Software - Advanced Troubleshooting	H45YY
HPE Morpheus Software - Installation	H45YZ

Summary of Changes

Date	Version History	Action	Description of Change
16-Mar-2026	Version 3	Changed	New product functionality and SKU information have been added.
22-Sep-2025	Version 2	Changed	HPE Rebranding applied
05-May-2025	Version 1	New	New QuickSpecs

[Have feedback on QuickSpecs? We're listening](#)

Chat now

© Copyright 2026 Hewlett Packard Enterprise Development LP. The information contained herein is subject to change without notice. The only warranties for Hewlett Packard Enterprise products and services are set forth in the express warranty statements accompanying such products and services. Nothing herein should be construed as constituting an additional warranty. Hewlett Packard Enterprise shall not be liable for technical or editorial errors or omissions contained herein.

Microsoft and Windows NT are US registered trademarks of Microsoft Corporation. Intel is a US registered trademark of Intel Corporation. Unix is a registered trademark of The Open Group.

a50009231enw - 17263 - Worldwide - V3 - 16-March-2026
HEWLETT PACKARD ENTERPRISE
Hpe.com

