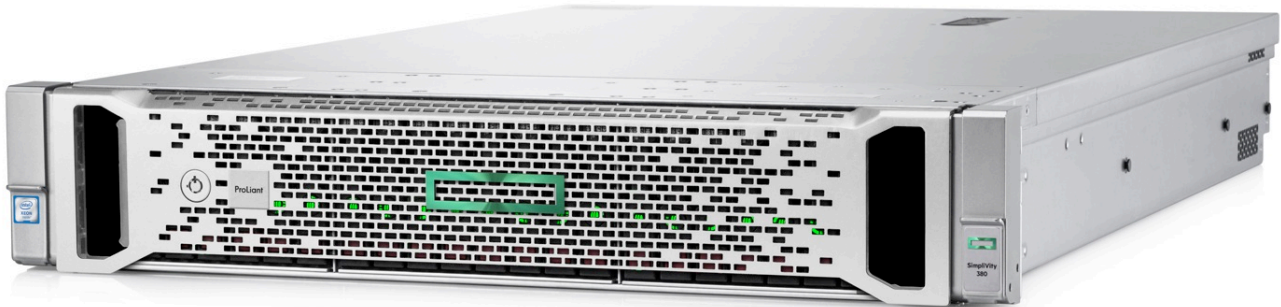


Overview

HPE SimpliVity 380 Gen9



For IT leaders struggling to achieve the agility and economics of the cloud, with the control and governance of on-premises IT, HPE SimpliVity 380 delivers a powerhouse hyperconverged solution—running some of the world’s most efficient and resilient data centers. A market and customer satisfaction leader, the solution dramatically simplifies IT by combining all infrastructure and advanced data services for virtualized workloads onto the bestselling server platform in the market.

HPE SimpliVity 380, available on HPE ProLiant DL380 Gen9 Servers, is a compact, scalable 2U rack-mounted building block that delivers server, storage, and storage networking services. It also delivers a complete set of advanced functionality that enables dramatic improvements to the efficiency, management, protection, and performance of virtualized workloads—at a fraction of the cost and complexity of today’s traditional infrastructure stack.

What's New

- Factory integrated hyperconverged solution direct from HPE
- Featuring HPE OmniStack software running on HPE DL380 Servers
- Intel® Xeon® E5-2600 v4 Processor (Broadwell) support
- All Flash Storage

HPE SimpliVity 380 Product Information

Scalable and Configurable

- Expandable in 1 node increments up to 32 total nodes
- Simplified, configurable appliance with multiple storage choice points
 - Small All SSD: Small Business and remote offices
 - Medium All SDD: Mid-Size Enterprise Data Centers
 - Large All SSD: Large Enterprise Data Centers
- Processor - Choice of Intel Xeon E5 v4 processors
- Memory - 256GB to 1536GB (Per Node)
- Network - 10Gb, 1Gb
- Power - Redundancy
- Virtualization Software and Licensing
- All in a compact 2U form factor

NOTE: It is strongly recommended that an HPE SimpliVity 380 cluster have a minimum of two nodes to realize the full benefit of the high availability hyperconverged solution

Overview

Software Features

- VMware vSphere
- HPE SimpliVity management plugin for VMware vCenter

Hardware Availability Features

- Cluster expansion without downtime
- Hot-pluggable SSD
- Redundant power supplies
- Integrated storage controller with battery-backed cache
- HPE ProLiant Integrated Lights-Out Advanced (iLO) 4 Remote Management

Services

- HPE Insight Remote Support delivers 24x7 secure remote support
- 3-year solution support included for best support experience

NOTE: For the best support experience, HPE Pointnext Installation Services and 24x7x365 support recommended.

HPE SimpliVity 380 At-a-Glance	
Node Size	2U
Processors	2x Intel Xeon E5 processors per node, 8 to 22 cores selectable
Memory	256GB to 1536GB per node selectable
Storage	Three selectable configurations of all flash storage Small - 5 x 1.92TB SSD Kit Medium - 9 x 1.92TB SSD Kit Large - 12 x 1.92TB SSD Kit
Network Ports	Ethernet 10Gb 2-port
Power Supplies	1400W FS Hot Plug Power Supply Kit 800W FS Hot Plug Power Supply Kit 800W FS -48VDC Hot Plug Power Supply Kit (Telecom) 800W FS Hot Plug Power Supply Kit
Hardware Warranty¹	Server Warranty includes 3-Year Parts, 3-Year Labor, 3-Year Onsite support with next business day response
Hardware Support	3-year HPE SimpliVity 380 solution support (required)
NOTE¹: Warranty for SSDs is subject to maximum usage limitations. Maximum usage limit is the maximum amount of data that can be written to the drive. Drives that have reached this limit will not be eligible for	

Standard Features

Features and Benefits

Fully integrated system

Combines x86 resources, storage, and storage networking in a single hyperconverged system. Simplifies management and delivers great cost efficiency and agility with increased visibility and control.

Peak and predictable performance

The all-flash solution provides predictable and linear performance at near-wire speeds with reduced latency. Hardware-assisted inline deduplication, compression, and optimization helps minimize I/O and network traffic, improving performance while delivering great storage and bandwidth efficiency.

Scale in and scale out

Easily expand or shrink configurations as your needs change. Each node supports a large number of fully protected virtual machines (VMs), with the networked collection of nodes at both local and remote sites managed as a single entity.

VM centricity and mobility

Enables all actions, policies, and management at the VM level. Global unified management and integration with established administrative systems streamline operations and improve IT agility.

Dramatic TCO reduction

Drastically reduce the need to purchase multiple discrete components, optimize storage capacity with guaranteed 10:1 data efficiency, and prevent over-provisioning for performance and capacity with on-demand expansion.

Software Overview

Pre-integrated software

- Virtualization HPE SimpliVity Startup Wizard

Virtualization Platform Software and Licenses

NOTE: The HPE SimpliVity 380 supports VMware vCenter 6.0 and 6.5.

- VMware vSphere installation media is required to complete the installation and is available from HPE when ordering the HPE SimpliVity 380
- Valid licenses for the following VMware software components are required and is available from HPE when ordering the HPE SimpliVity 380
 - (2) VMware vSphere licenses per Node
 - (1) VMware vCenter license

NOTE: HPE SimpliVity 380 for VMware vSphere requires valid VMware vSphere, and vCenter licenses. VMware licenses can only be removed from the order if it is confirmed that the end-customer has a valid license in place (Enterprise License Agreement (ELA), vCloud Air Partner or unused Enterprise Purchasing Program tokens).

Purchasing VMware licenses from Hewlett Packard Enterprise allows Hewlett Packard Enterprise to be the single point of contact for the entire solution inclusive of the virtualization software and is recommended.

Management

- VMware vCenter
- HPE SimpliVity management plugin for VMware vCenter

NOTE: The HPE SimpliVity 380 supports VMware vCenter 6.0 and 6.5.

How to Order

Overview

Step 1: Start with the base node

Step 2: Select the hardware options to add to the base node: processors, memory, storage, networking, power, HW options

Step 3: Select the software options to add to the node: HPE OmniStack, iLO Advanced, VMware vSphere

Step 4: Select service and support

Step 1: Base Node

Action	Description	Part #
Select the base node	HPE SimpliVity 380 Gen9 Node	Q5V84A
Required node components included automatically by the configurator	HPE SimpliVity 380 480GB Boot Storage Kit	Q5V85A
	HP DL380 Gen9 2SFF Front SAS x4 Cable Kit	783008-B21
	HP 12Gb SAS Expander Card with Cables for DL380 Gen9	727250-B21
	HP H240ar 12Gb 2-ports Int FIO Smart Host Bus Adapter	749976-B21
	HP DL380 Gen9 2SFF Front/Rear SAS/SATA Kit	724864-B21
	HPE 32GB microSD Mainstream Flash Media Kit	700139-B21
	HPE SimpliVity Accelerator Card	included in base
	LSI Storage controller	included in base

Step 2: Hardware Configuration

Processors

Action	Description	Cores	Speed	Power	Part #
Select CPUs for the node	HPE DL380 Gen9 E5-2620v4	8	2.1 Ghz	HPE ProLiant DL380 Gen9 Special Server	817927-L21 817927-B21
	HPE DL380 Gen9 E5-2667v4	8	3.2 Ghz	HPE ProLiant DL380 Gen9 Special Server	817947-L21 817947-B21
Both CPUs are required and will be included by the configurator	HPE DL380 Gen9 E5-2640v4	10	2.4 Ghz	HPE ProLiant DL380 Gen9 Special Server	817937-L21 817937-B21
	HPE DL380 Gen9 E5-2650v4	12	2.2 Ghz	HPE ProLiant DL380 Gen9 Special Server	817943-L21 817943-B21
	HPE DL380 Gen9 E5-2680v4	14	2.4Ghz	HPE ProLiant DL380 Gen9 Special Server	817951-L21 817951-B21
	HPE DL380 Gen9 E5-2690v4	14	2.6Ghz	HPE ProLiant DL380 Gen9 Special Server	817959-L21 817959-B21
	HPE DL380 Gen9 E5-2683v4	16	2.1Ghz	HPE ProLiant DL380 Gen9 Special Server	817953-L21 817953-B21
	HPE DL380 Gen9 ES-2697Av4	16	2.6Ghz	HPE ProLiant DL380 Gen9 Special Server	817955-L21 817955-B21
	HPE DL380 Gen9 E5-2697v4	18	2.3Ghz	HPE ProLiant DL380 Gen9 Special Server	817963-L21 817963-B21
	HPE DL380 Gen9 E5-2698v4	20	2.2Ghz	HPE ProLiant DL380 Gen9 Special Server	817965-L21 817965-B21
	HPE DL380 Gen9 E5-2699v4	22	2.2Ghz	HPE ProLiant DL380 Gen9 Special Server	817967-L21 817967-B21

How to Order

Memory

Action	Total Capacity	Module Type	DIMM Size	Qty	Part #
Select a memory capacity for the node The appropriate memory and quantity will be included by the configurator	256 GB	R-DIMMS	16GB DIMM	HPE 16GB (1x16GB) Dual Rank x4 DDR4-2400 CAS-17-17-17 Registered Memory Kit	836220-B21
	256 GB	R-DIMMS	32GB DIMM	HPE 32GB (1x32GB) Dual Rank x4 DDR4-2400 CAS-17-17-17 Registered Memory Kit	805351-B21
	384 GB	R-DIMMS	16GB DIMM	HPE 16GB (1x16GB) Dual Rank x4 DDR4-2400 CAS-17-17-17 Registered Memory Kit	836220-B21
	384 GB	R-DIMMS	32GB DIMM	HPE 16GB (1x16GB) Dual Rank x4 DDR4-2400 CAS-17-17-17 Registered Memory Kit	836220-B21
			16GB DIMM	HPE 32GB (1x32GB) Dual Rank x4 DDR4-2400 CAS-17-17-17 Registered Memory Kit	805351-B21
	512 GB	R-DIMMS	32GB DIMM	HPE 32GB (1x32GB) Dual Rank x4 DDR4-2400 CAS-17-17-17 Registered Memory Kit	805351-B21
	512 GB	LR-DIMMS	64GB DIMM	HPE 64GB (1x64GB) Quad Rank x4 DDR4-2400 CAS-17-17-17 Load Reduced Memory Kit	805358-B21
	768 GB	R-DIMMS	32GB DIMM	HPE 32GB (1x32GB) Dual Rank x4 DDR4-2400 CAS-17-17-17 Registered Memory Kit	805351-B21
	1024 GB	LR-DIMMS	64GB DIMM	HPE 64GB (1x64GB) Quad Rank x4 DDR4-2400 CAS-17-17-17 Load Reduced Memory Kit	805358-B21
	1536 GB	LR-DIMMS	64GB DIMM	HPE 64GB (1x64GB) Quad Rank x4 DDR4-2400 CAS-17-17-17 Load Reduced Memory Kit	805358-B21

Storage

Effective capacity varies by environment, and is a function of realized deduplication and compression rates. The capacities in this table offer a conservative range based on compression and deduplication rates found in standard, primary storage use cases.

Action	Description	Effective Capacity	Part #
Select one of three storage configurations for the node	HPE SimpliVity 380 5x1.92TB SSD Kit	HPE SimpliVity 380 Small All Flash Enterprise Storage FIO Kit	Q5V86A
	HPE SimpliVity 380 9x1.92TB SSD Kit	HPE SimpliVity 380 Medium All Flash Enterprise Storage FIO Kit	Q5V87A
	HPE SimpliVity 380 12x1.92TB SSD Kit	HPE SimpliVity 380 Large All Flash Enterprise Storage FIO Kit	Q5V88A

Networking		
Action	Description	Part #
A 10GbE FlexLOM is required. This is in addition to the standard 4 port 1GbE LOM included in the base node	HPE Ethernet 10Gb 2-port 560FLR-SFP+ Adapter	665243-B21
	HPE Ethernet 10Gb 2-port 561FLR-T Adapter	700699-B21

PCI Adapter		

How to Order

Action	Description	Part #
One optional PCI adapter can be added to the system	HPE Ethernet 10Gb 2-port 560SFP+ Adapter	665249-B21
	HPE Ethernet 10Gb 2-port 561T Adapter	716591-B21
	HPE Ethernet 1Gb 2-port 361T Adapter	652497-B21
	HPE Ethernet 1Gb 4-port 366T Adapter	811546-B21

Power Supplies		
Action	Description	Part #
Two power supplies are required.	HPE 1400W Flex Slot Platinum Plus Hot Plug Power Supply Kit	720620-B21
	HPE 800W Flex Slot Platinum Hot Plug Power Supply Kit	720479-B21
	HPE 800W Flex Slot -48VDC Hot Plug Power Supply Kit	720480-B21
	HPE 800W Flex Slot Titanium Hot Plug Power Supply Kit	720482-B21
	HPE 800W Flex Slot Universal Hot Plug Power Supply Kit	720484-B21

NOTE: The power supply requirement can vary based configuration and environment. Please refer to HPE Power Advisor for proper power sizing

NOTE: All configured nodes ship with a standard 6-foot IEC C-13/C-14 jumper cord (A0K02A). This jumper cord is also included with each standard AC power supply option kit. If a different power cord is required, please check the ProLiant Power Cables web page. <https://h20195.www2.hpe.com/v2/getpdf.aspx/4AA6-6836ENW.pdf>

How to Order

Related Options

Action	Description	Part #
Additional hardware options are available	HPE FlexNetwork X240 10G SFP+ to SFP+ 1.2m Direct Attach Copper Cable	JD096C
	HPE FlexNetwork X240 10G SFP+ to SFP+ 3m Direct Attach Copper Cable	JD097C
	HPE FlexNetwork X240 10G SFP+ to SFP+ 5m Direct Attach Copper Cable	JG081C
	HPE FlexNetwork X240 10G SFP+ SFP+ 7m Direct Attach Copper Cable	JC784C
	HPE LC to LC Multi-mode OM3 2-Fiber 1.0m 1-Pack Fiber Optic Cable	AJ834A
	HPE LC to LC Multi-mode OM3 2-Fiber 2.0m 1-Pack Fiber Optic Cable	AJ835A
	HPE LC to LC Multi-mode OM3 2-Fiber 5.0m 1-Pack Fiber Optic Cable	AJ836A
	HPE LC to LC Multi-mode OM3 2-Fiber 15.0m 1-Pack Fiber Optic Cable	AJ837A
	HPE BladeSystem c-Class 10Gb SFP+ SR Transceiver	455883-B21
	HPE BladeSystem c-Class 10Gb SFP+ LR Transceiver	455886-B21
	HPE BladeSystem c-Class Virtual Connect 1G SFP SX Transceiver	453151-B21
	HPE 0.9m, Blue, Cat6 STP Data Cable	AF594A
	HPE 3m, Blue, Cat6 STP Data Cable	AF595A
	HPE 10m, Blue, Cat6 STP Data Cable	AF596A
	HPE 1.2m/4ft CAT5 RJ45 M/M Ethernet Cable	C7533A
	HPE RJ45 to RJ45 Cat5e Black M/M 7.6ft 1-pack Data Cable	C7535A
	HPE 4.3m/14ft CAT5 RJ45 M/M Ethernet Cable	C7536A
	HPE 7.6m/25ft CAT5 RJ45 M/M Ethernet Cable	C7537A
	HP 2U Small Form Factor Easy Install Rail Kit	733660-B21
	HP 2U Cable Management Arm for Easy Install Rail Kit	733664-B21
	HP DL380 Gen9 Systems Insight Display Kit	768900-B21
	HPE 2U Security Bezel Kit	666988-B21
	HPE Trusted Platform Module Option	488069-B21

Step 3: Software Configuration

HPE Omnistack Software

Action	Description	Part #
Based on the hardware configurations in step 1 & 2 the appropriate software will be included by the configurator. The required software is determined by CPU and storage configuration.	HPE OmniStack for DL380 Gen9 8-core 2-processor 5x1.92TB SSD Software	Q5V89A
	HPE OmniStack for DL380 Gen9 10-core 2-processor 5x1.92TB SSD Software	Q5V90A
	HPE OmniStack for DL380 Gen9 12-core 2-processor 5x1.92TB SSD Software	Q5V91A
	HPE OmniStack for DL380 Gen9 14-core 2-processor 5x1.92TB SSD Software	Q5V92A
	HPE OmniStack for DL380 Gen9 16-core 2-processor 5x1.92TB SSD Software	Q5V93A
	HPE OmniStack for DL380 Gen9 18-core 2-processor 5x1.92TB SSD Software	Q5V94A
	HPE OmniStack for DL380 Gen9 20-core 2-processor 5x1.92TB SSD Software	Q5V95A
	HPE OmniStack for DL380 Gen9 22-core 2-processor 5x1.92TB SSD Software	Q5V96A
	HPE OmniStack for DL380 Gen9 8-core 2-processor 9x1.92TB SSD Software	Q5V97A
	HPE OmniStack for DL380 Gen9 10-core 2-processor 9x1.92TB SSD Software	Q5V98A
	HPE OmniStack for DL380 Gen9 12-core 2-processor 9x1.92TB SSD Software	Q5V99A

How to Order

	HPE OmniStack for DL380 Gen9 14-core 2-processor 9x1.92TB SSD Software	Q5W00A
	HPE OmniStack for DL380 Gen9 16-core 2-processor 9x1.92TB SSD Software	Q5W01A
	HPE OmniStack for DL380 Gen9 18-core 2-processor 9x1.92TB SSD Software	Q5W02A
	HPE OmniStack for DL380 Gen9 20-core 2-processor 9x1.92TB SSD Software	Q5W03A
	HPE OmniStack for DL380 Gen9 22-core 2-processor 9x1.92TB SSD Software	Q5W04A
	HPE OmniStack for DL380 Gen9 8-core 2-processor 12x1.92TB SSD Software	Q5W05A
	HPE OmniStack for DL380 Gen9 10-core 2-processor 12x1.92TB SSD Software	Q5W06A
	HPE OmniStack for DL380 Gen9 12-core 2-processor 12x1.92TB SSD Software	Q5W07A
	HPE OmniStack for DL380 Gen9 14-core 2-processor 12x1.92TB SSD Software	Q5W08A
	HPE OmniStack for DL380 Gen9 16-core 2-processor 12x1.92TB SSD Software	Q5W09A
	HPE OmniStack for DL380 Gen9 18-core 2-processor 12x1.92TB SSD Software	Q5W10A
	HPE OmniStack for DL380 Gen9 20-core 2-processor 12x1.92TB SSD Software	Q5W11A
	HPE OmniStack for DL380 Gen9 22-core 2-processor 12x1.92TB SSD Software	Q5W12A

VMware vSphere Software

NOTE: The HPE SimpliVity 380 supports VMware vCenter 6.0 and 6.5.

Action	Description	Part #
A valid VMware vSphere license is required for each CPU to complete deployment.	VMware vSphere Standard 1 Processor 3yr Software	BD711A
	VMware vSphere Standard 1 Processor 3yr E-LTU	BD711AAE
	VMware vSphere Enterprise Plus 1 Processor 3yr Software	BD715A
	VMware vSphere Enterprise Plus 1 Processor 3yr E-LTU	BD715AAE
If an order is placed without VMware licenses, the user agrees to supply the necessary license.	VMware vSphere Remote Office Branch Office Standard 25VM 3yr E-LTU	P9A82AAE
	VMware vSphere Remote Office Branch Office Advanced 25VM 3yr E-LTU	P9A85AAE
	VMware vSphere Standard 1 Processor 5yr Software	BD512A
	VMware vSphere Standard 1 Processor 5yr E-LTU	BD512AAE
	VMware vSphere Enterprise Plus 1 Processor 5yr Software	BD514A
	VMware vSphere Enterprise Plus 1 Processor 5yr E-LTU	BD514AAE
	VMware vSphere Remote Office Branch Office Standard 25VM 5yr E-LTU	P9A83AAE
	VMware vSphere Remote Office Branch Office Advanced 25VM 5yr E-LTU	P9A86AAE

NOTE: HPE SimpliVity 380 for VMware vSphere requires valid VMware vSphere, and vCenter licenses. VMware licenses can only be removed from the order if it is confirmed that the end-customer has a valid licenses in place (Enterprise License Agreement (ELA), vCloud Air Partner or unused Enterprise Purchasing Program tokens).

Purchasing VMware licenses from Hewlett Packard Enterprise allows Hewlett Packard Enterprise to be the single point of contact for the entire solution inclusive of the virtualization software and is recommended. When the VMware license is not included on the order the solution level support experience is impacted.

How to Order

HPE Integrated Lights Out Advanced Software (iLO Advanced)

Action	Description	Part #
The HPE iLO Advanced license is required	HPE iLO Advanced including 3yr 24x7 Tech Support and Updates 1-server LTU	BD505A

Step 4: Service and Support

Services for customers purchasing from Hewlett Packard Enterprise or an enterprise reseller are quoted using Hewlett Packard Enterprise order configuration tools.

Technology Services for increased uptime, productivity and ROI

At HPE, our priority is to maximize your workload uptime, avoiding problems before they occur. As the experts for the HPE SimpliVity 380, HPE Pointnext support will be your 24x7x 365 single point-of-contact for all of your support needs. This means you can spend more time developing apps and adding value to the business rather than maintaining your infrastructure.

If there is a potential risk in your infrastructure, our remote support technology will proactively notify HPE and initiate the resolution process. If you are experiencing any issue with your solution, HPE Pointnext Proactive Care will provide you immediate access to our team of solution experts, whose first priority is to ensure your workloads are up and running, and then immediately start diagnosing the failure.

HPE Pointnext offers its full portfolio of support services. This includes Foundation Care, Proactive Care, Proactive Care Advanced and Datacenter Care. Flexible Capacity and Operational Support Services are also available.

HPE SimpliVity 380 is supported by the power of HPE, in 30+ different languages, with local presence across 140 countries.

Please consult your HPE Sales Representative for any additional questions and support options.

Installation and Startup Services

HPE Pointnext provides a full set of installation and startup services to meet your unique requirements.

Action	Description	Part #
Hardware install service	HPE SVT 380 Hardware Install service	HA114A1#5LY
Remote software install service	HPE SVT 380 Remote software install service	HA124A1#5LZ
Onsite software install service	HPE SVT 380 Onsite Software install service	HA124A1#5MF

Please contact your HPE Sales Representative for more information.

NOTE: For more information on Technology Services please visit: <https://www.hpe.com/us/en/services.html>

Warranty

This product is covered by a global limited warranty and supported by Hewlett Packard Enterprise Pointnext and a worldwide network of Hewlett Packard Enterprise Authorized Channel Partners resellers. Hardware diagnostic support and repair is available for three years from date of purchase. Support for software and initial setup is available for 90 days from date of purchase. Enhancements to warranty services are available through HPE Pointnext operational services or customized service agreements. Hard drives have either a one year or three year warranty; refer to the specific hard drive QuickSpecs for details.

This hardware warranty includes 3-Year Parts, 3-Year Labor, 3-Year Onsite support with next business day response. Warranty repairs may be accomplished through the use of Customer Self Repair (CSR) parts. These parts fall into two categories: 1) Mandatory CSR parts are designed for easy replacement. A travel and labor charge will result when customers decline to replace a Mandatory CSR part; 2) Optional CSR parts are also designed for easy replacement but may involve added complexity. Customers may choose to have Hewlett Packard Enterprise replace Optional CSR parts at no charge.

Technical Specifications

End-of-life Management and Recycling

Hewlett-Packard offers end-of-life Hewlett Packard Enterprise product return, trade-in, and recycling programs in many geographic areas. For trade-in information, please go to: <http://www.hp.com/go/green>. To recycle your product, please go to: <http://www.hp.com/go/green> or contact your nearest Hewlett Packard Enterprise sales office. Products returned to Hewlett Packard Enterprise will be recycled, recovered or disposed of in a responsible manner.

The EU WEEE directive (2002/95/EC) requires manufacturers to provide treatment information for each product type for use by treatment facilities. This information (product disassembly instructions) is posted on the Hewlett Packard Enterprise web site at: <http://www.hp.com/go/green>. These instructions may be used by recyclers and other WEEE treatment facilities as well as Hewlett Packard Enterprise OEM customers who integrate and re-sell Hewlett Packard Enterprise equipment.

Physical Dimensions 2U form factor: 3.44 x 26.75 x 17.54 in (8.73 x 67.94 x 44.54 cm)

Weight Ranges from 24.8 lb (11.7 kg) to 27.7 lb (12.5 kg) depending on hardware configuration

Summary of Changes

Date	Version History	Action	Description of Change
08-Jan-2018	From Version 3 to 4	Changed	QuickSpecs was updated.
23-Oct-2017	From Version 2 to 3	Changed	Care Pack naming and Service and Support- Parts and Materials updated.
25-Sept-2017	From Version 1 to 2	Changed	Changes made to the How to Order Section; Change name to add the Gen9 reference
05-Jun-2017	Version 1	New	Initial version



Sign up for updates



© Copyright 2018 Hewlett Packard Enterprise Development LP. The information contained herein is subject to change without notice. The only warranties for Hewlett Packard Enterprise products and services are set forth in the express warranty statements accompanying such products and services. Nothing herein should be construed as constituting an additional warranty. Hewlett Packard Enterprise shall not be liable for technical or editorial errors or omissions contained herein.

Microsoft and Windows NT are US registered trademarks of Microsoft Corporation. Intel is a US registered trademark of Intel Corporation. Unix is a registered trademark of The Open Group.

a00005874enw - 15895 - Worldwide - V4 - 8-January-2018