

Orchestrate by ScreenBeam

Starting Guide v3.5

Required ScreenBeam Software and configuration files

- SB1000EDU-G2 Firmware – 11.2.20.0 or later
- Central Management System (CMSE) – 4.4.16.0 or later
- Orchestrate Windows Assistant – 3.5.0 or later (for Windows)
- Orchestrate Roster Importer – 2.0.1 or later

- Install with MDM from ScreenBeam upgrade server
 - Orchestrate (O8) Extension – 3.5.0 or later

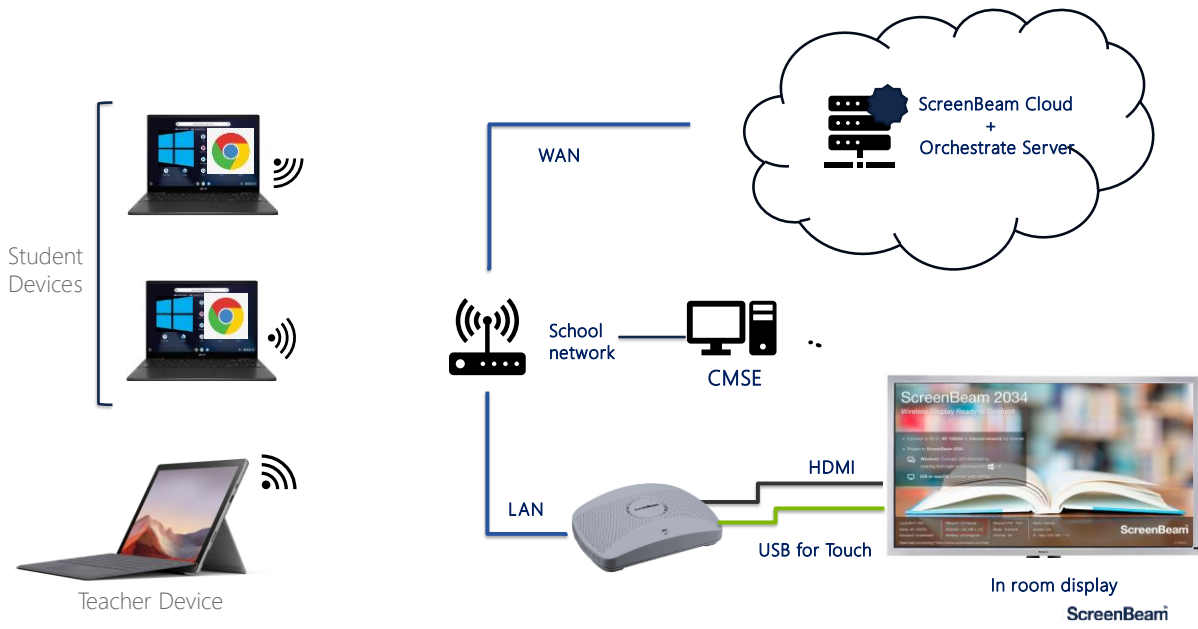
System Requirements

- OS: Windows 10/11 Pro/Edu/Ent (64-bit) or higher or Chrome OS 81.0.4044.103 or later
- CPU (teacher): 10th Gen Intel Core i5 or AMD equivalent/better
- CPU (student): 10th Gen Intel Core i3 or AMD equivalent/better
- Wi-Fi: Intel WiFi6 AX series or better
- MEMORY: Teacher – 8GB (or more), Student – 4GB (or more)
- HDD: 64GB (or more)

Required Network configurations

- TCP port 49542 – Communication between Orchestrate Windows assistant Orchestrate extension (Intra-device rule on Windows PCs only.)
- TCP port 8080 – Connection between Orchestrate extension and ScreenBeam receiver
- Allow cloud.screenbeam.com in your network content filter and whitelist it from SSL decryption

Topology



Deployment Procedure

Refer to the **Orchestrate deployment guide for AAD** or **Google Workspace** for step-by-step details and examples.

CMSE and ScreenBeam Cloud setup

Refer to the CMSE deployment guide for more information on cloud and user account setup - <https://www.screenbeam.com/support/screenbeamcms/>

1. Install/Upgrade to required CMSE version, and log into CMSE. Create a new CMSE user account if necessary
2. From the CMSE web portal, click on the "Connect Cloud" button and create a ScreenBeam Cloud (SB Cloud) account. A verification email will be sent to your email
3. Activate the SB Cloud account through the verification email and log into your new account
4. Obtain an Orchestrate license through your Sales Rep, Trial request page, or Application Library link in the SB Cloud dashboard
5. Activate the Orchestrate license in SB Cloud
6. Create SB Cloud user role which can manage Orchestrate and CMSE and accounts for other admins. Assign the role to new accounts

Receiver Provisioning

7. Connect your ScreenBeam receivers to CMSE for management
8. Update ScreenBeam receiver firmware
9. In CMSE, assign the Orchestrate license to your receivers

Orchestrate Server and Roster Configuration

10. In O8 Server, create an organization key. Save the key value which will be used when provisioning your end user devices
11. In O8 Server, import roster data
 - a. A sample roster is included with the Roster Importer tool for reference. It is not required to use the tool.
12. **(Optional)** Setup the Orchestrate Roster Import for automatic daily imports
13. **(Optional)** Setup Email notifications in Orchestrate server to get roster import notifications emailed to you

Orchestrate Client Device Setup

For Windows Devices (Intune or other MDM)

1. Register Orchestrate Windows Assistant app with your AAD tenant (if using AAD)
2. Create a policy to install the O8 Windows Assistant and specify the configuration, such as Organization key, in the Command Line argument list or JSON file
3. Using your MDM, push the O8 Windows Assistant app to the end user devices
4. It is advised to reboot the end user devices after installing the software

For ChromeOS Devices (Google Workspace)

1. Add API client access OAuth scopes in Google Admin for Orchestrate app/extension.
 - a. **358176082631-6tp1fmujjspd2h1i60n150rlnonab7rp.apps.googleusercontent.com**
2. Add O8 extension in Google Admin and apply to organization units (OU) containing the teacher and student accounts. Edit the extension JSON setting with your organization key generated in step 10 of the deployment procedure
 - a. Orchestrate Extension ID – **bdgflbkkgedengcnmmbijghkpdplkfb**
 - b. Custom URL - https://cdn.screenbeam.com/assets/orchestrate/manifestv3/upgrade_ext_v3.5.0.xml