

Dell 32 Plus 4K QD-OLED Monitor

S3225QC

Simplified Service Manual

Notes, cautions, and warnings

 **NOTE:** A NOTE indicates important information that helps you make better use of your product.

 **CAUTION:** A CAUTION indicates either potential damage to hardware or loss of data and tells you how to avoid the problem.

 **WARNING:** A WARNING indicates a potential for property damage, personal injury, or death.

Contents

Safety instructions	5
Before working inside your monitor	5
After working inside your monitor	5
Views of S3225QC monitor	6
Front view	6
Back view	7
Side view	7
Bottom view	8
Major components of S3225QC	9
Wiring connectivity diagram	11
Connecting the cables	13
Connecting the USB-C cable	13
Connecting the HDMI cable (optional)	13
Organizing your cables	14
Disassembly and reassembly	15
Recommended tools	15
Screw list	15
Stand	17
Removing the stand	17
Installing the stand	17
Back cover	19
Removing the back cover	19
Installing the back cover	20
Speaker	23
Removing the speaker	23
Installing the speaker	25
Metal shield	27
Removing the metal shield	27
Installing the metal shield	29
System board, power board, and fan	30
Removing the system board, power board, and fan	30
Installing the system board, power board, and fan	33
Middle frame	37
Removing the middle frame	37
Installing the middle frame	38
LED board and webcam module	39
Removing the LED board and webcam module	39
Installing the LED board and webcam module	40
USB board	41
Removing the USB board	41
Installing the USB board	42
Keypad board	43
Removing the keypad board	43
Installing the keypad board	44
Troubleshooting	46

Self-Test	46
Built-in diagnostics.....	47
Common problems	48
Universal Serial Bus (USB) specific problems	50
Audio specific problems.....	51
Regulatory information	52
FCC notices (U.S. Only) and other regulatory information.....	52
EU product database for energy label and product information sheet	52
Contacting Dell.....	53

Safety instructions

Use the following safety guidelines to protect your monitor from potential damage and to ensure your personal safety. Unless otherwise noted, each procedure included in this document assumes that you have read the safety information that is shipped with your monitor.

NOTE: Before using the monitor, read the safety information that is shipped with your monitor and printed on the product. Keep the documentation at a secure location for future reference.

WARNING: Use of controls, adjustments, or procedures other than those specified in this documentation may result in exposure to shock, electrical hazards and/or mechanical hazards.

CAUTION: The possible long-term effect of listening to audio at high volume through the headphones (on a monitor that supports it) may damage your hearing ability.

- Place the monitor on a solid surface and handle it carefully.
 - The screen is fragile and can be damaged if dropped or press with a sharp object.
 - Ensure that your monitor is electrically rated to operate with the AC power available in your location.
 - Keep the monitor in room temperature. Excessive cold or hot conditions can have an adverse effect on the liquid crystal of the display.
 - Connect the power cable from the monitor to a wall outlet that is near and accessible. See [Connecting the cables](#).
- Do not place and use the monitor on a wet surface or near water.
- Do not subject the monitor to severe vibration or high impact conditions. For example, do not place the monitor inside a car trunk.
- Unplug the monitor when it is going to be left unused for an extended period.
- To avoid electric shock, do not attempt to remove any cover or touch the inside of the monitor.
- Read these instructions carefully. Keep this document for future reference. Follow all warnings and instructions marked on the product.
- Certain monitors can be wall mounted using the VESA mount that is sold separately. Ensure to use the correct VESA specifications as mentioned in the wall mounting section of the User's Guide.

For information about safety instructions, see the Safety, Environmental, and Regulatory Information (SERI) document that is shipped with your monitor.

Before working inside your monitor

Steps

- Save and close all open files and exit all open applications.
 - Turn off your monitor.
 - Disconnect your monitor and all attached devices from their electrical outlets.
 - Disconnect all attached network devices and peripherals, such as keyboard, mouse, and dock from your monitor.
- CAUTION:** To disconnect a network cable, first unplug the cable from your monitor and then unplug the cable from the network device.
- Remove any media card and optical disc from your monitor, if applicable.

After working inside your monitor

CAUTION: Leaving stray or loose screws inside your monitor may severely damage your monitor.

Steps

- Replace all screws and ensure that no stray screws remain inside your monitor.
- Connect any external devices, peripherals, or cables you removed before working on your monitor.
- Replace any media cards, discs, or any other parts that you removed before working on your monitor.
- Connect your monitor and all attached devices to their electrical outlets.
- Turn on your monitor.

Views of S3225QC monitor

Front view

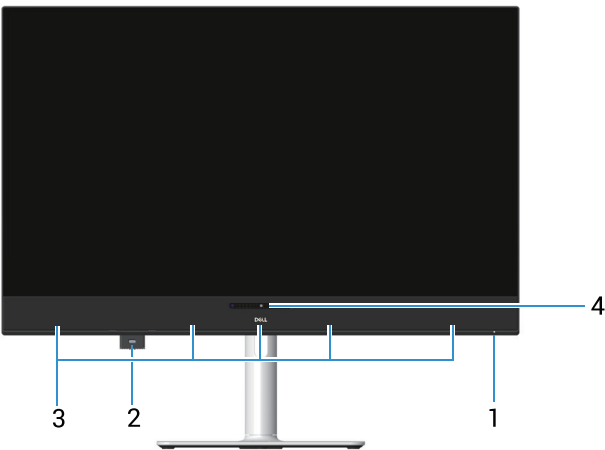


Figure 1. Front view of the monitor

Table 1. Front view of the monitor.

No.	Description	Use
1	Power LED indicator	<p>Solid white light indicates that the monitor is turned on and functioning normally. Blinking white light indicates that the monitor is in Standby Mode.</p> <p>❗ NOTE: The power LED indicator blinks rapidly in white during the refresh process.</p> <p>❗ NOTE: If the accumulated usage time exceeds 4 hours, Pixel Refresh will be automatically activated when the monitor goes into Standby mode or when you press the power button to turn off the monitor.</p>
2	Quick Access Port (QAP): USB-C 5Gbps downstream (Data only)	<p>Connect your USB device.</p> <p>❗ NOTE: To use this port, you must connect the USB Type-C cable (shipped with your monitor) to the USB Type-C upstream port at the back of the monitor and to your computer.</p>
3	Built-in speakers	Provides audio output.
4	Position Sensor	Senses head position.

Back view



Figure 2. Back view of the monitor

Table 2. Back view of the monitor.

No.	Description	Use
1	VESA mounting holes (100 mm x 100 mm - behind attached VESA cover)	Wall-mount the monitor using VESA-compatible wall mount kit. NOTE: Wall-mount kit is not shipped with your monitor and is sold separately.
2	Regulatory information label	Lists the regulatory approvals.
3	Stand release button	Releases the stand from the monitor.
4	Regulatory label (including MyDell QR code, serial number, and Service Tag label)	See this label if you need to contact Dell for technical support. The Service Tag is a unique alphanumeric identifier that enables Dell service technicians to identify the hardware components in your monitor and access warranty information.
5	Joystick	Use to control the OSD menu. For more Information, see <i>Operating the monitor</i> in the <i>User's Guide</i> of S3225QC.
6	Power button	To turn the monitor on or off.
7	Security-lock slot (based on Kensington Security Slot)	Secure your monitor using a security lock (to be purchased separately) to prevent unauthorized movement of your monitor.
8	I/O cover	Use to cover I/O.
9	Cable-management guide	Use to organize cables by routing them through the guide.

Side view



Figure 3. Side view of the monitor

Bottom view



Figure 4. Bottom view of the monitor

Table 3. Bottom view of the monitor.

No.	Description	Use
1	Quick Access port (QAP)	Press the Quick Access Port (QAP) module and then release the monitor's built-in USB. For more Information. For more Information, see <i>Using the Quick Access Port (QAP)</i> in the <i>User's Guide of S3225QC</i> .
2	USB-C 5Gbps upstream port (DisplayPort 1.4 Alternate Mode, Power Delivery up to 90 W)	<p>Connect the USB Type-C cable that came with your monitor to the computer or mobile device. This port supports USB Power Delivery and Data.</p> <p>The USB-C 5Gbps upstream port supports DisplayPort 1.4 Alternate Mode with a maximum resolution of 3840 x 2160 at 120 Hz, PD 20 V/ 4.5 A, 15 V/3 A, 9 V/3 A, 5 V/3 A.</p> <p>NOTE: USB Type-C is not supported on versions of Windows prior to Windows 10.</p>
3	USB-C 5Gbps downstream port (data only)	USB-C 5Gbps downstream (Data only) port with charging capability of up to 15 W PD.
4	Stand-lock feature	Lock the stand to the monitor using a M3 x 6 mm screw (screw not included).
5	HDMI port	Connect your computer with the HDMI cable (purchased separately).
6	Power connector	Connect the power cable (shipped with your monitor).

Major components of S3225QC

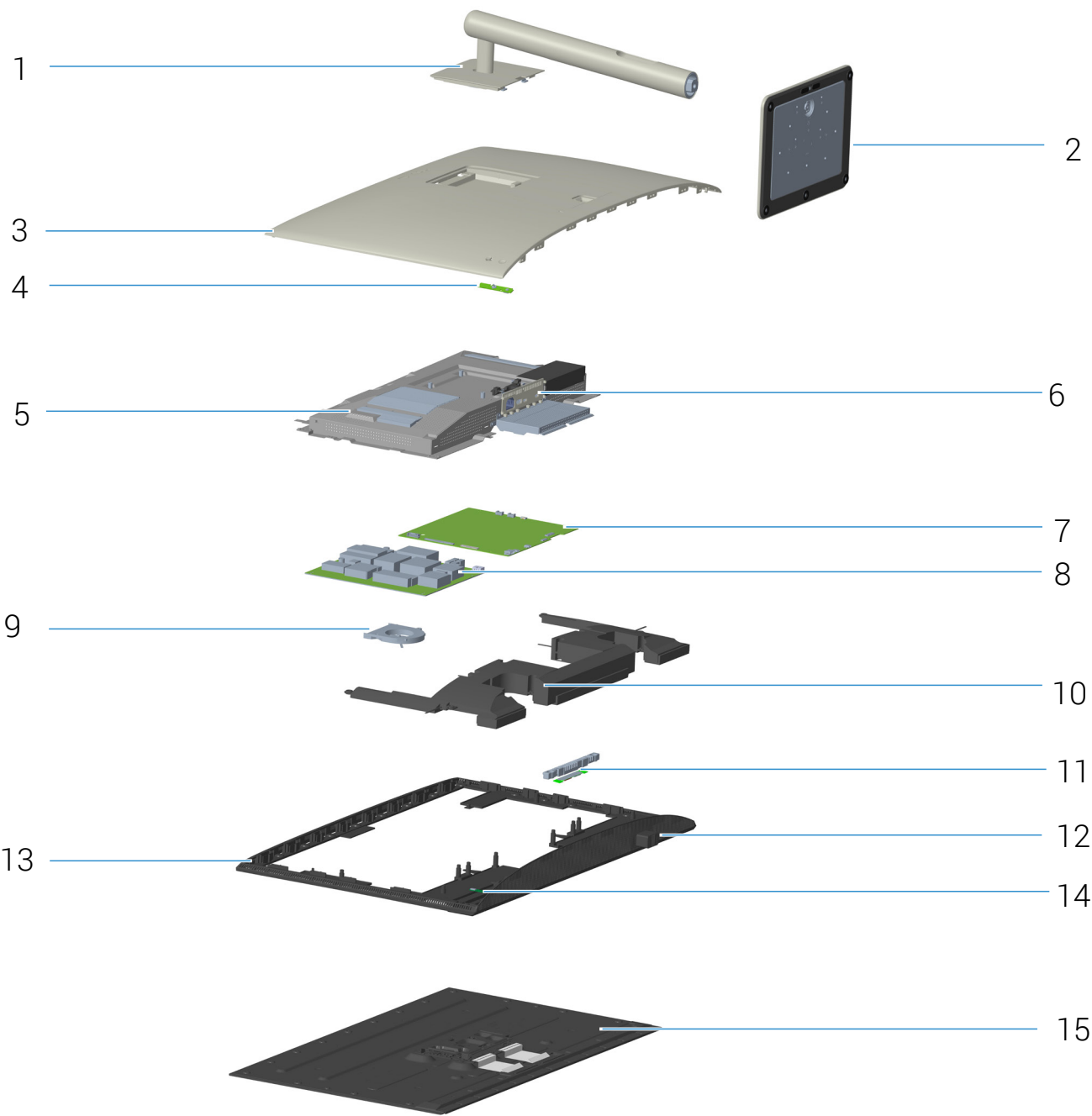


Figure 5. Major components of S3225QC

Table 4. Major components of S3225QC.

No.	Description
1	Stand riser
2	Stand base
3	Back cover
4	Keypad board
5	Metal shield
6	Metal shield I/O cover
7	System board
8	Power board
9	Fan
10	Speaker
11	Webcam module
12	USB board
13	Middle frame
14	LED board
15	Display panel

Note

For replacement of power cable, connectivity cable and external power supply (if applicable), contact Dell:

1. Go to [Dell Support Site](#).
2. Verify your country or region in the **Choose A Country/Region** drop-down menu at the bottom-right corner of the page.
3. Click **Contact Us** next to the country dropdown.
4. Select the appropriate service or support link based on your need.
5. Choose the method of contacting Dell that is convenient for you.

Wiring connectivity diagram

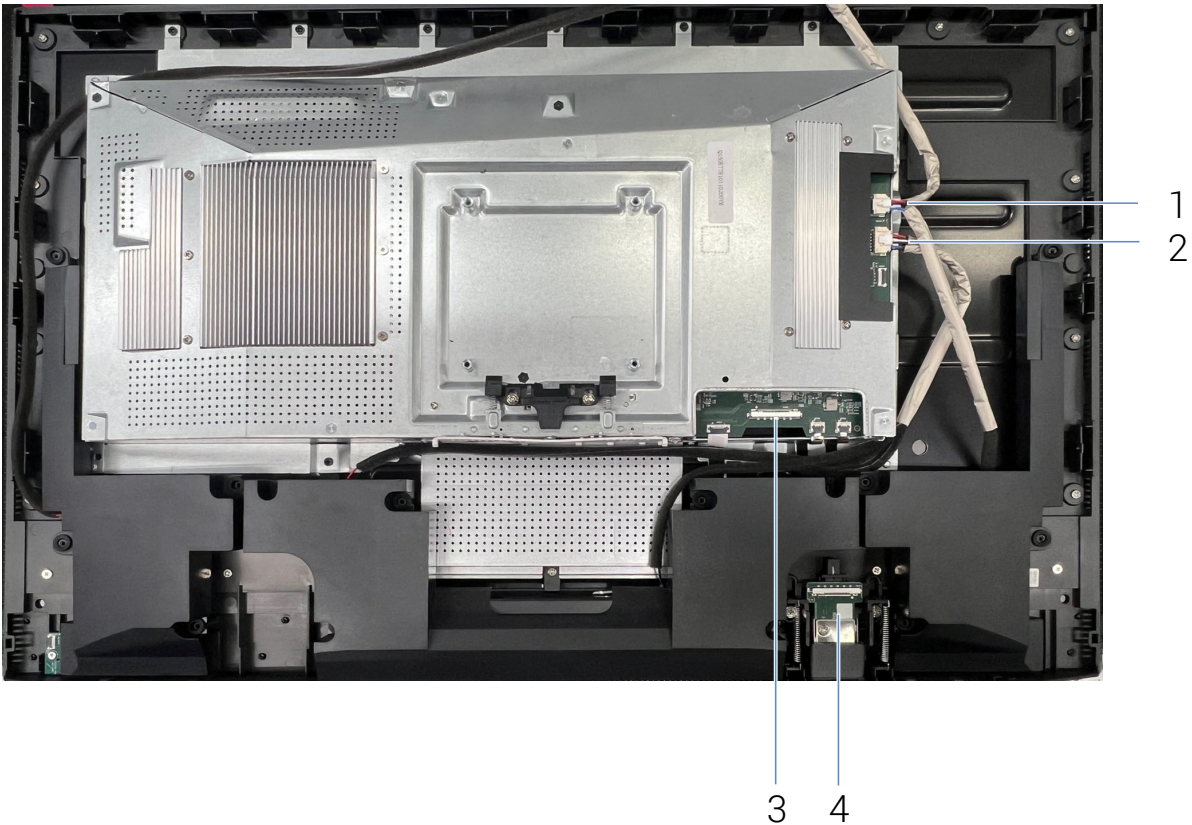


Figure 6. Wiring connectivity diagram



Figure 7. Wiring connectivity diagram

Table 5. Wire connectivity diagram.

No.	Description
1	Speaker cable
2	Speaker cable
3	System board - USB board cable
4	USB board cable
5	Keypad board to LED board cable
6	Keypad board to system board cable

Connecting the cables

⚠ WARNING: Before you begin any of the procedures in this section, follow the [Safety instructions](#).

ⓘ NOTE: Dell monitors are designed to work optimally with the Dell-supplied cables inside the box. Dell does not guarantee the video quality and performance if non-Dell cables are used.

ⓘ NOTE: Route the cables through the cable management guide before connecting them.

ⓘ NOTE: Do not connect all the cables to the computer simultaneously.

ⓘ NOTE: The images are for the purpose of illustration only. The appearance of the computer may vary.

To connect your monitor to the computer:

1. Turn off your computer and disconnect the power cable.
2. Connect the USB-C or HDMI cable from your monitor to the computer.

If your monitor displays an image, installation is complete. If it does not display an image, see [Common problems](#).

Connecting the USB-C cable

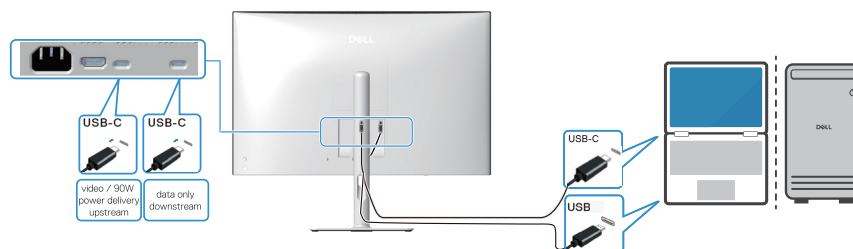


Figure 8. Connecting the USB-C cable

Connecting the HDMI cable (optional)

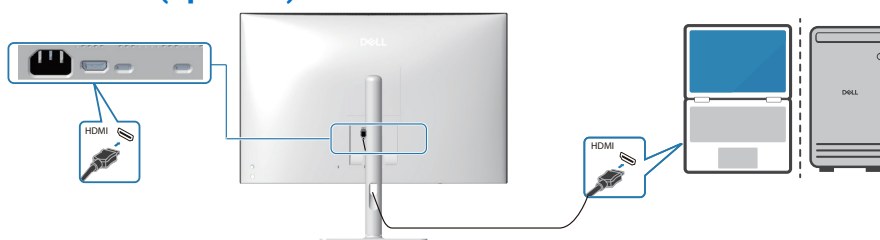


Figure 9. Connecting the HDMI cable

3. Plug the power cables from your computer and monitor into a nearby outlet.

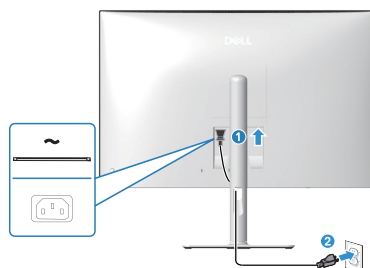


Figure 10. Connecting the power cable

4. Attaching the I/O cover.

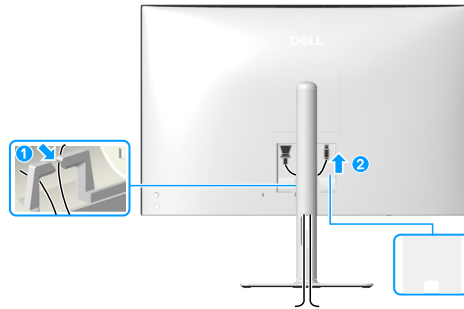


Figure 11. Attaching the I/O cover

To attach the I/O cover:

- Align and place the tabs on the I/O cover with the slots on the display back-cover.
- Press the I/O cover to snap it into place. Turn on the monitor and the computer.

If your monitor displays an image, installation is complete. If it does not display an image, see [Common problems](#).

Organizing your cables



Figure 12. Organizing your cables

After connecting all necessary cables to your monitor and computer, (see [Connecting the cables](#) for cable attachment) organize all cables as shown in the image.

If your cable is not able to reach your computer, you may connect directly to the computer without routing through the cable management guide on the monitor stand

Disassembly and reassembly

⚠ CAUTION: The information in this section is intended for authorized service technicians in the EMEA region. Dell prohibits users from disassembling the monitor, and any damage caused by unauthorized servicing will not be covered under the warranty.

Recommended tools











The procedures in this document may require the following tools:





- Screwdriver (Phillips-head, Hexagonal head)
- Plastic scribe

Screw list

- ① **NOTE:** When removing screws from a component, it is recommended to note the screw type, the quantity of screws, and then place them in a screw storage box. This is to ensure that the correct number of screws and correct screw type is restored when the component is replaced.
- ① **NOTE:** Some computers have magnetic surfaces. Ensure that the screws are not left attached to such surfaces when replacing a component.
- ① **NOTE:** Screw color may vary with the configuration ordered.

Table 6. Screw list

Component	Screw type	Quantity	Screw image
Back cover	M4x10	4	
Speaker	Q3x5	14	
Metal shield	P3x5	10	
Fan	M2x5	2	
System board	M3x6	4	
Power board	M3x6	4	
	M4x6	1	
Middle frame	M3x4	16	
Heat sink	P3x6	4	
Webcam module	Q3x5	2	

Component	Screw type	Quantity	Screw image
LED board	Q2x3	1	
USB board	Q3x5	2	
	M3x4	1	
Keypad board	Q2x3	3	

Stand

Removing the stand

Prerequisites

1. Follow the procedure in [Before working inside your monitor](#).

About the task

The following image indicates the location of the stand and provides a visual representation of the removal procedure.

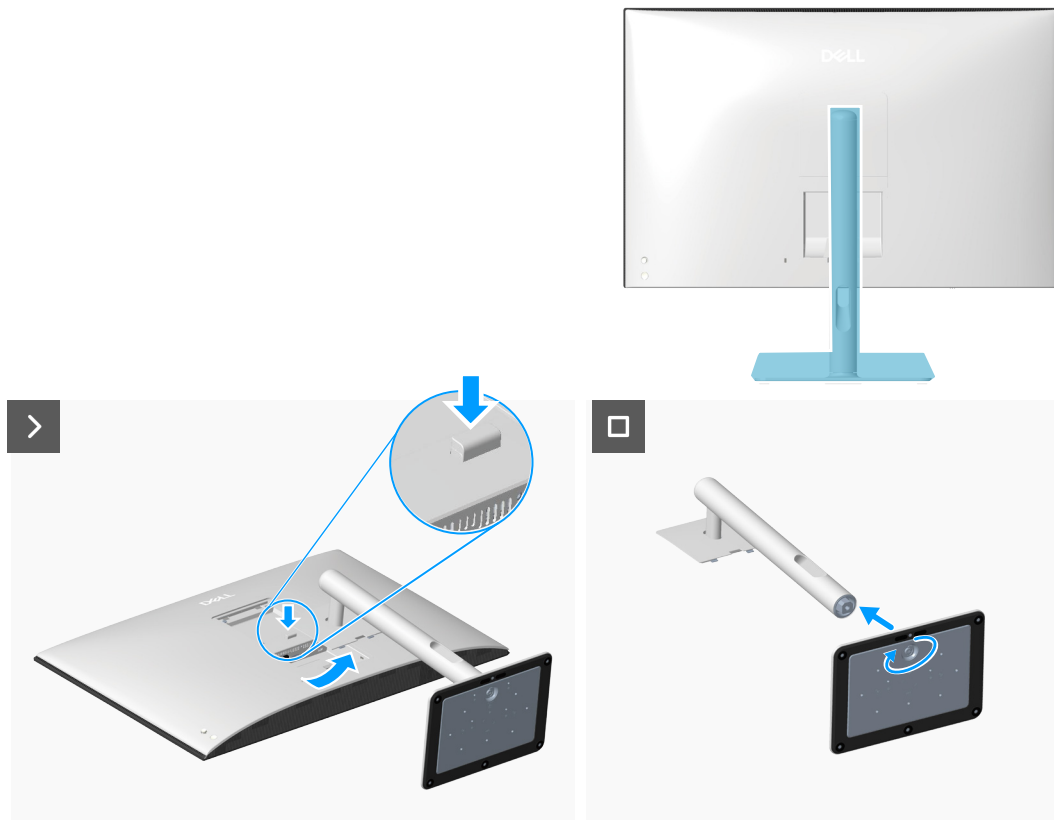


Figure 13. Removing the stand

Steps

1. Place the monitor on a clean, flat surface on a soft cloth or cushion.
2. Press the release button and pull the stand assembly away from the monitor.
3. Open the screw handle at the bottom of the stand base and turn it anti-clockwise to unlock the riser from the base.
4. Detach the stand riser from the stand base.

Installing the stand

Prerequisites

If you are replacing a component, remove the existing component before performing the installation procedure.

About this task

The following image indicates the location of the stand and provides a visual representation of the installation procedure.

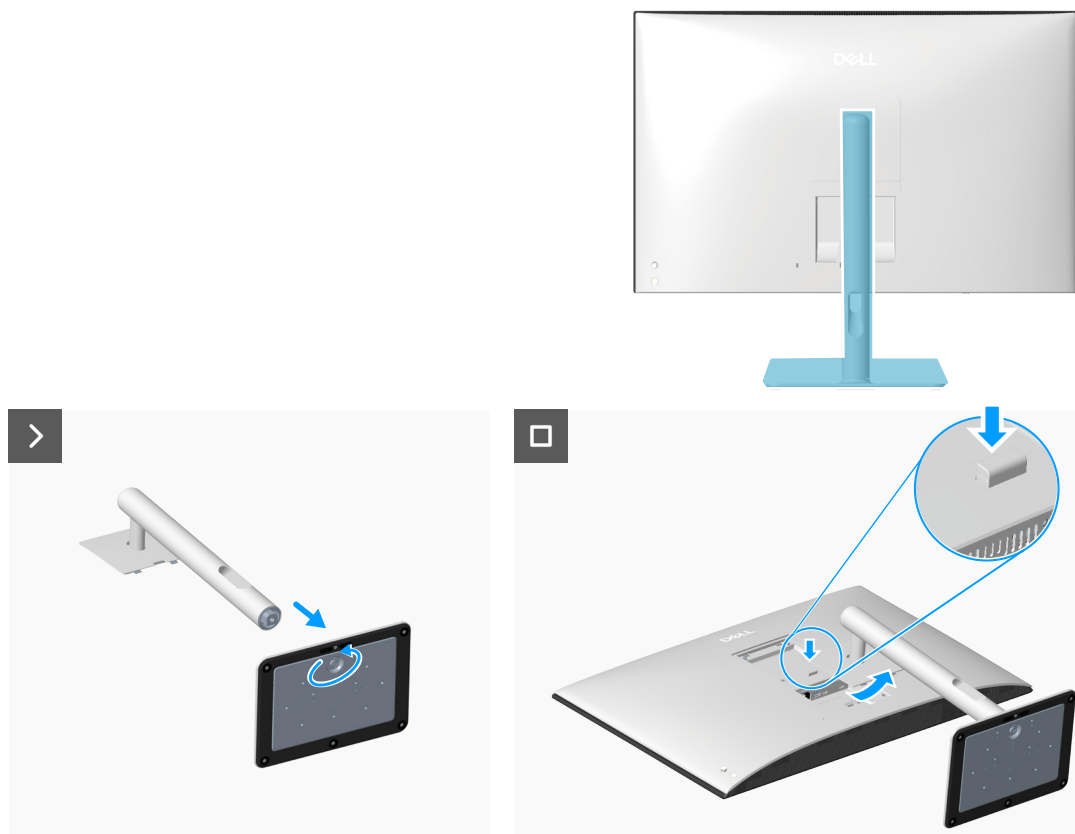


Figure 14. Installing the stand

Steps

1. Align and insert the stand riser into the stand base until it snaps into place.
2. Open the screw handle at the bottom of the stand base and turn it clockwise to secure the stand assembly.
3. Close the screw handle.
4. Align the stand-riser bracket with the grooves at the back of the monitor.
5. Slide and gently press the stand assembly until it snaps into place.

Next steps

1. Follow the procedure in [After working inside your monitor.](#)

Back cover

Removing the back cover

Prerequisites

1. Follow the procedure in [Before working inside your monitor.](#)
2. Remove the [stand](#).

About the task

The following image indicates the location of the back cover and provides a visual representation of the removal procedure.

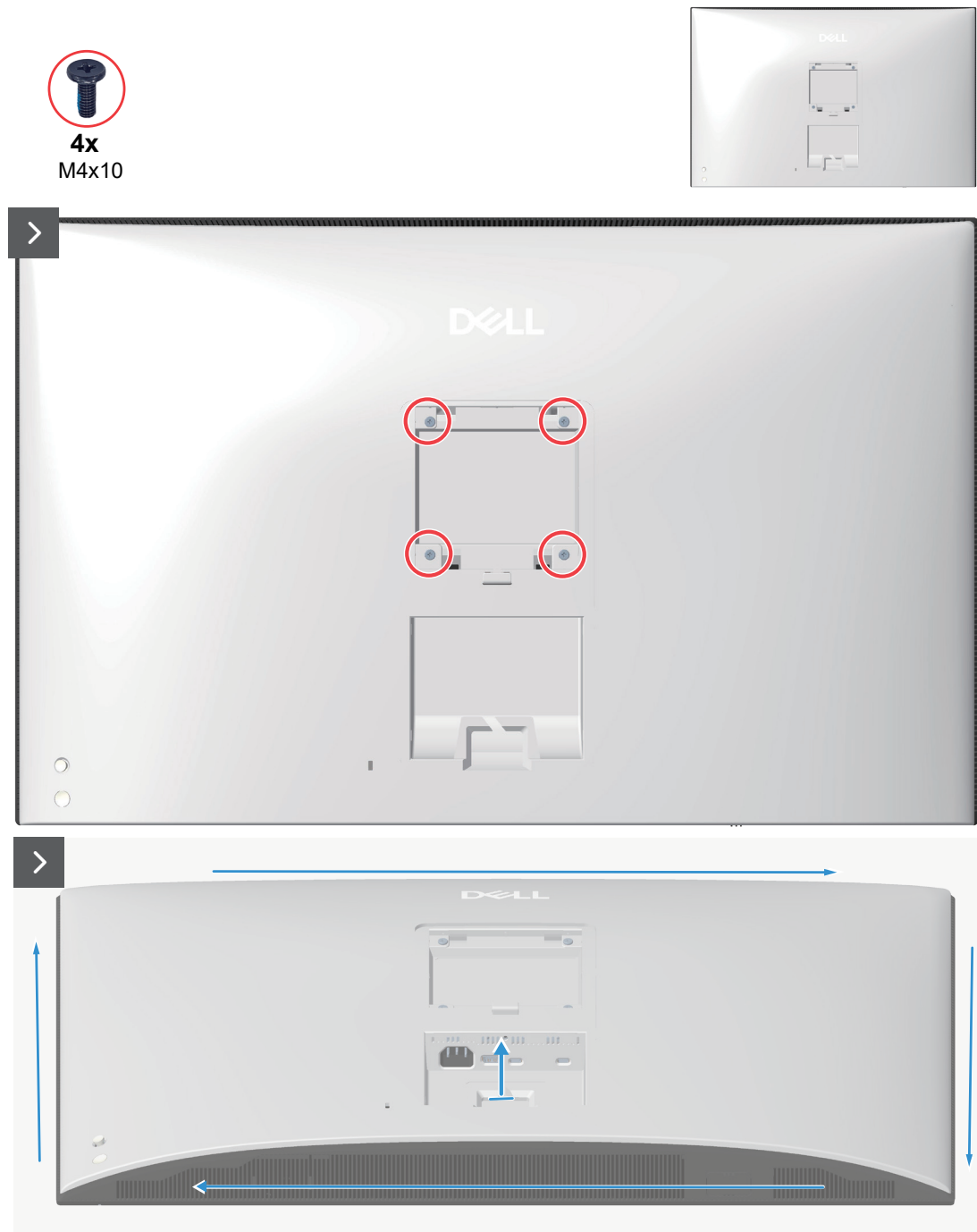


Figure 15. Removing the screws and prying the back cover

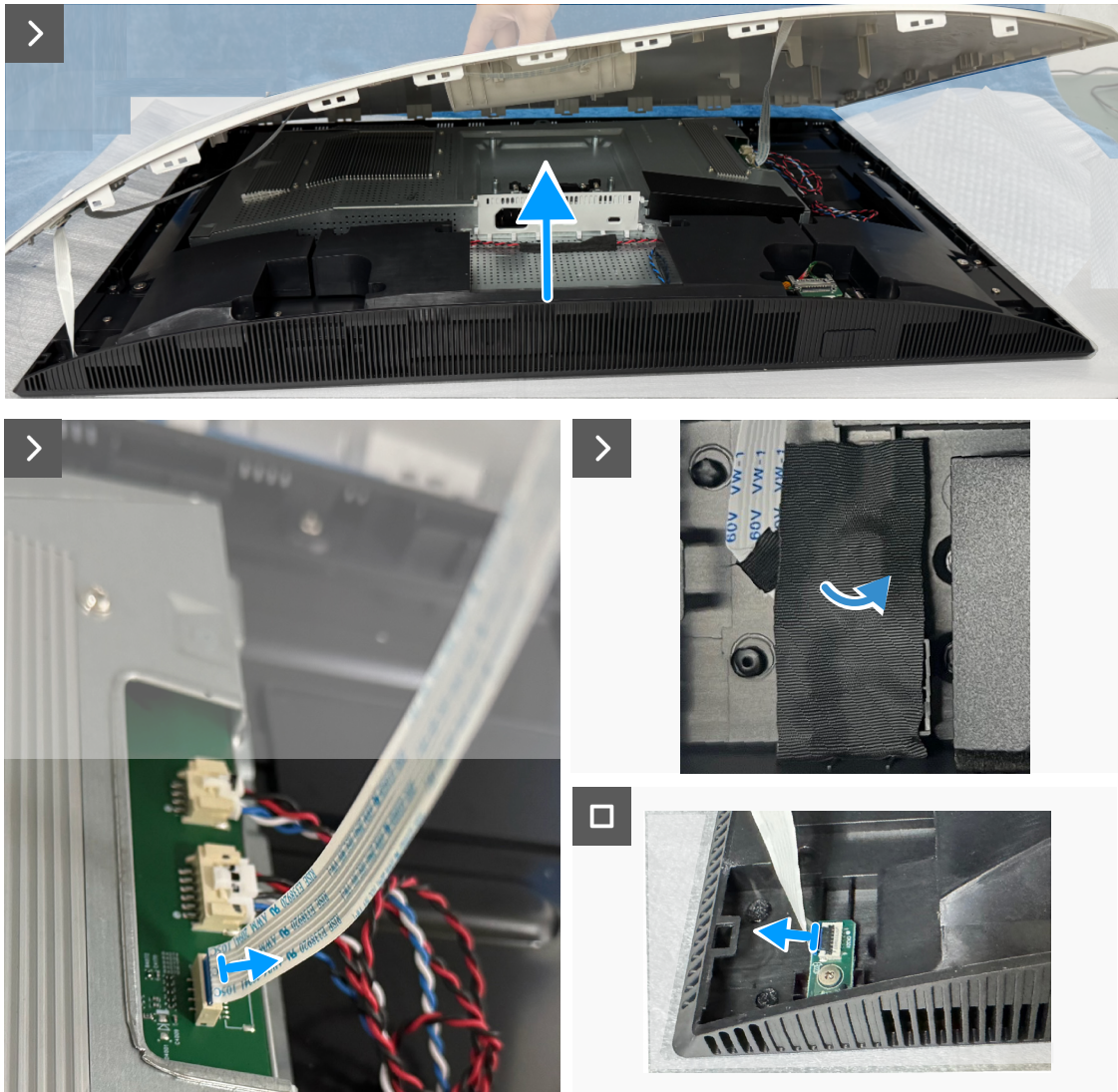


Figure 16. Disconnecting the keypad board and LED board cable

Steps

1. Remove the four screws (M4x10) that secure the back cover to the chassis.
2. Using a plastic scribe, pry the back cover starting from the bottom edge of the monitor.
3. Lift the back cover from the right, and disconnect the keypad board cable from the connector on the system board.
4. Peel the tape and disconnect the LED board cable from the keyboard board.

Installing the back cover

Prerequisites

If you are replacing a component, remove the existing component before performing the installation procedure.

About this task

The following image indicates the location of the back cover and provides a visual representation of the installation procedure.

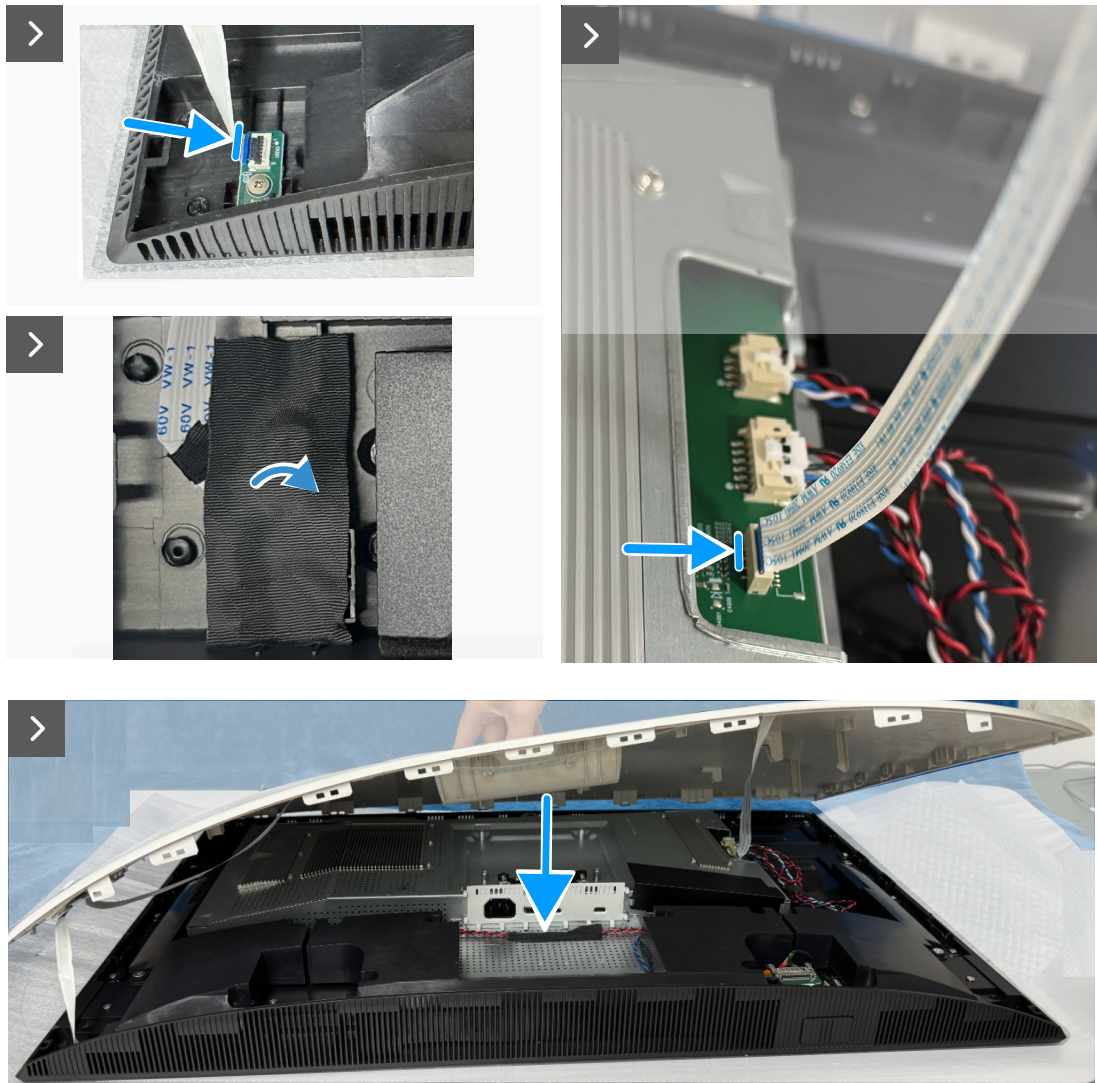


Figure 17. Connecting the keypad board and LED board cable

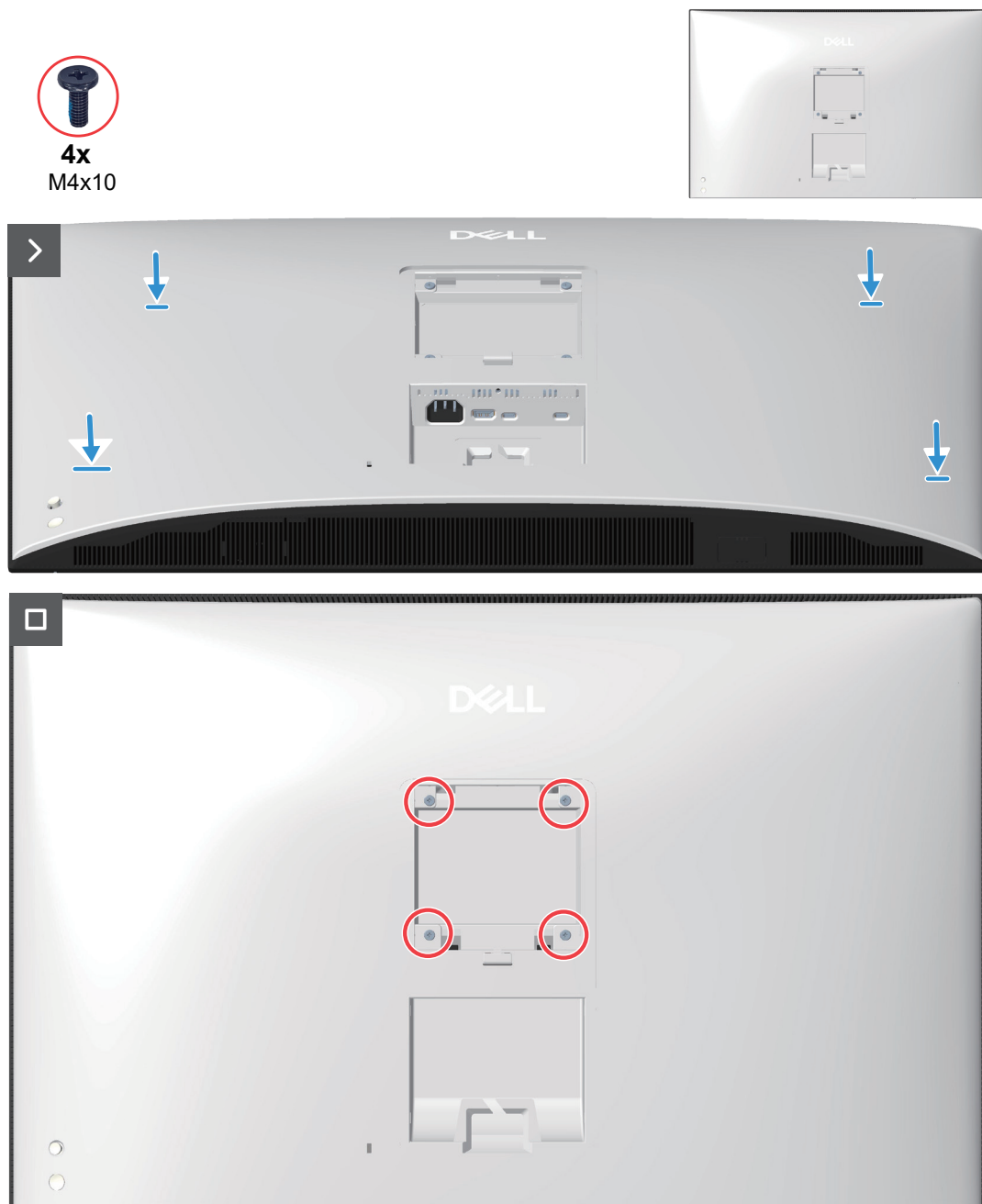


Figure 18. Replacing the screws

Steps

1. Connect the keypad board cable to the connector on the system board.
2. Connect the LED cable to the keypad board and adhere the tape.
3. Align the screw holes on the back cover with the screw holes on the monitor, and gently press along the sides to snap the back cover into place.
4. Replace the four screws (M4x10) to secure the back cover to the chassis.

Next steps

1. Install the [stand](#).
2. Follow the procedure in [After working inside your monitor](#).

Speaker

Removing the speaker

Prerequisites

1. Follow the procedure in [Before working inside your monitor](#).
2. Remove the [stand](#).
3. Remove the [back cover](#).

About the task

The following image indicates the location of the speaker and provides a visual representation of the removal procedure.



Figure 19. Peeling the tapes to secure the cables and Mylar



14x
Q3x5

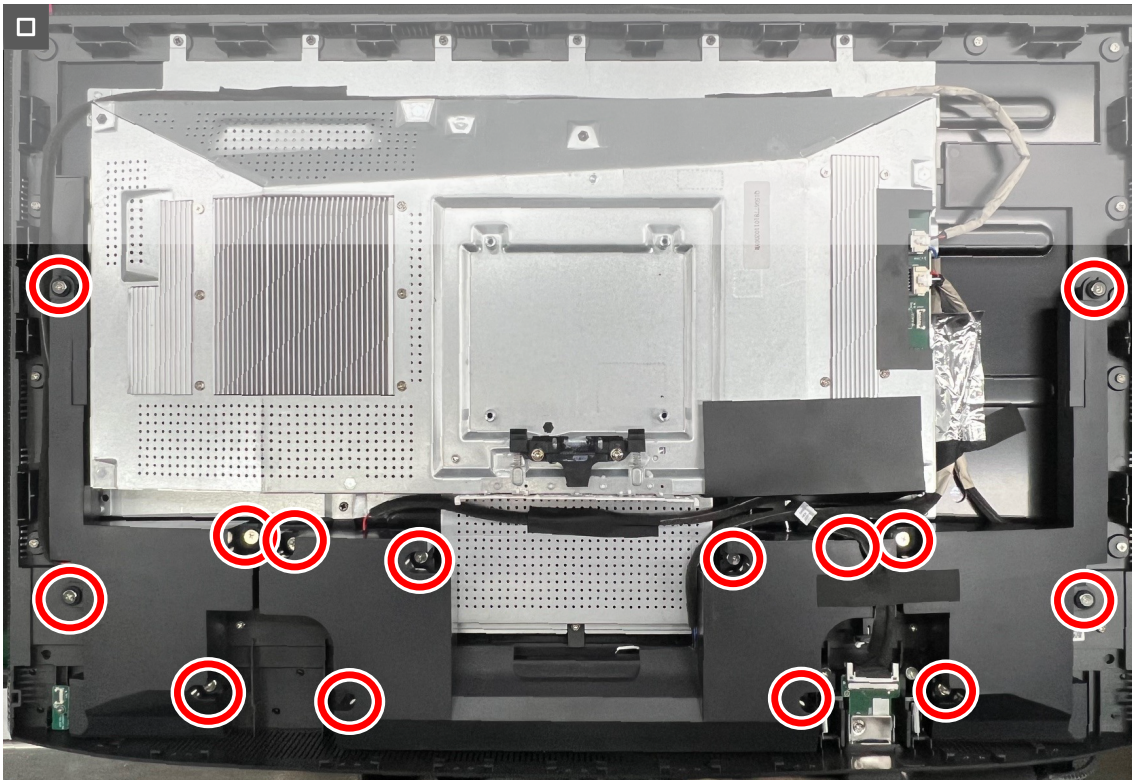
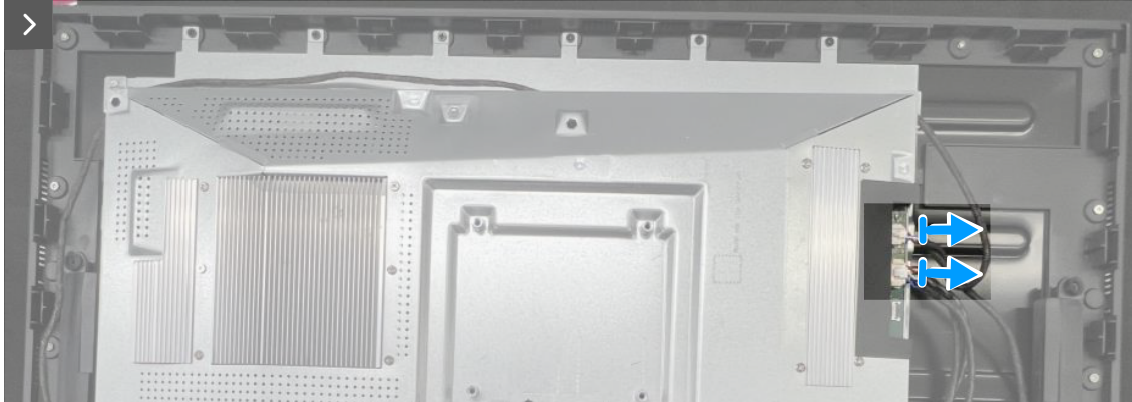


Figure 20. Disconnecting the speaker cables and removing the screws

Steps

1. Peel back the tapes and Mylar that secure the cables and metal shield to the display panel.
2. Disconnect the speaker cable from the connector on the system board.
3. Remove the fourteen screws (Q3x5) that secure the speakers to the middle frame.
4. Lift the speakers away from the monitor.

Installing the speaker

Prerequisites

If you are replacing a component, remove the existing component before performing the installation procedure.

About this task

The following image indicates the location of the speaker and provides a visual representation of the installation procedure.



14x
Q3x5

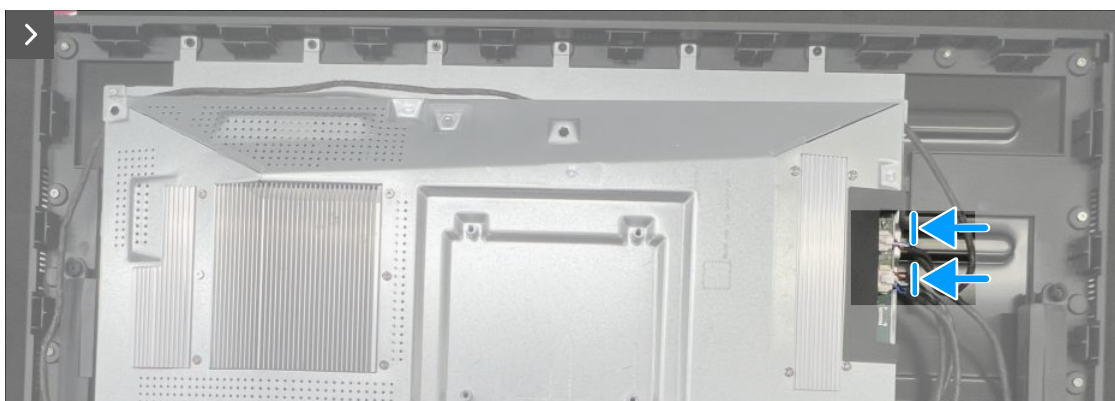
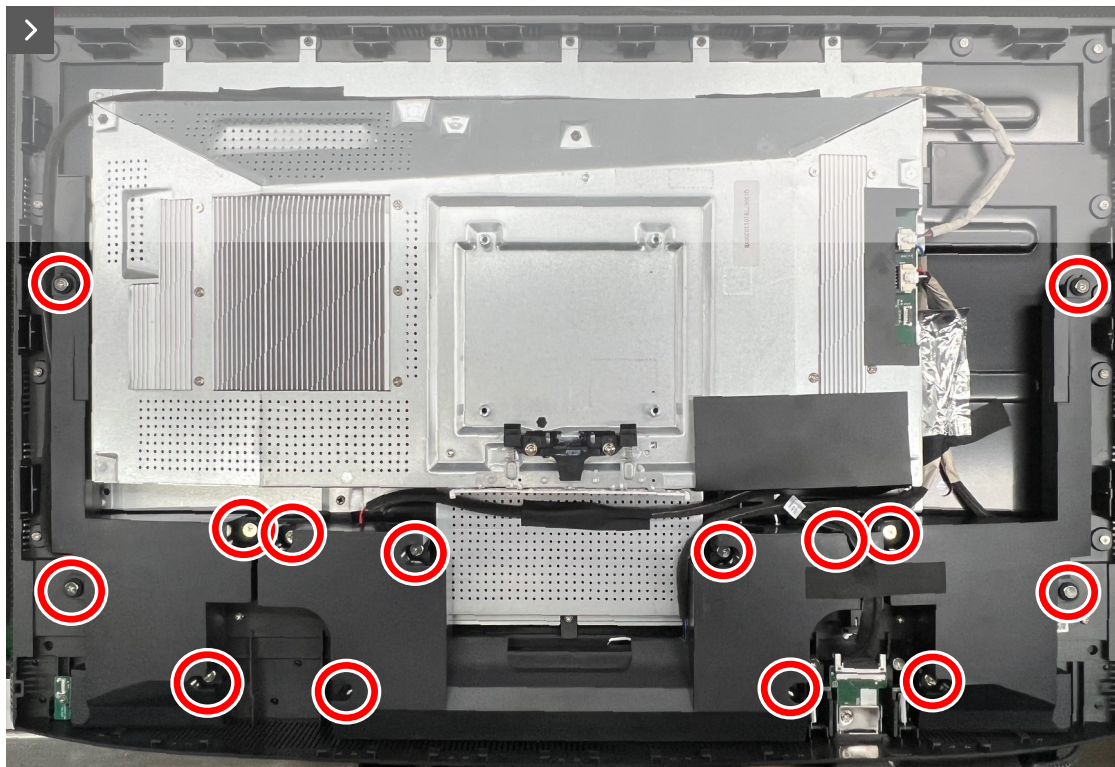


Figure 21. Installing the screws and connect the speaker cables

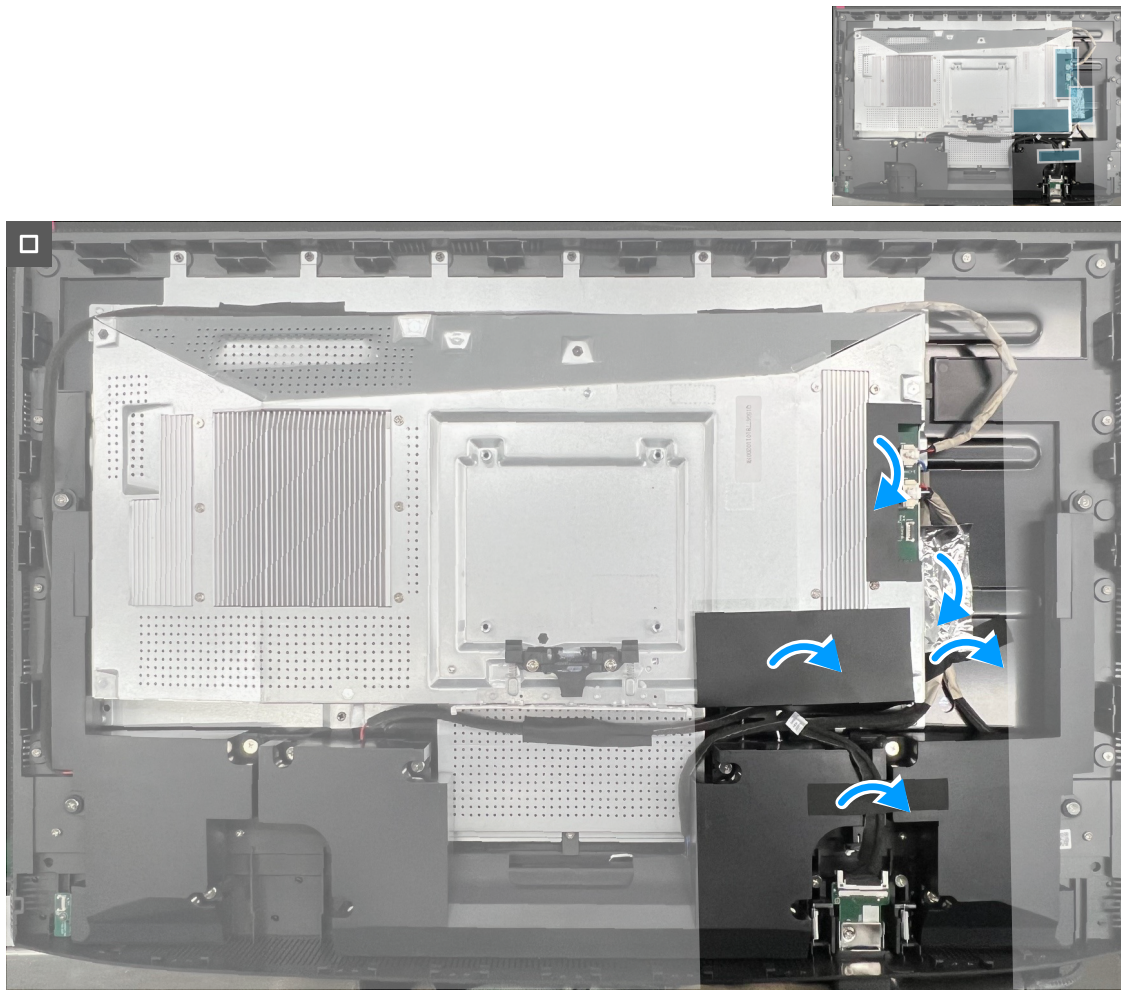


Figure 22. Adhere the tapes and Mylar to secure the cables and metal shield

Steps

1. Align and place the speakers in the slots on the chassis.
2. Connect the speaker cable to the connector on the system board.
3. Align the screw holes on the speakers with the screw holes on the middle frame.
4. Replace the fourteen screws (Q3x5) to secure the speakers to the middle frame.
5. Adhere the tapes to secure the cables and metal shield to the display panel.

Next steps

1. Install the [back cover](#).
2. Install the [stand](#).
3. Follow the procedure in [After working inside your monitor](#).

Metal shield

Removing the metal shield

Prerequisites

1. Follow the procedure in [Before working inside your monitor.](#)
2. Remove the [stand.](#)
3. Remove the [back cover.](#)
4. Remove the [speaker.](#)

About the task

The following image indicates the location of the metal shield and provides a visual representation of the removal procedure.

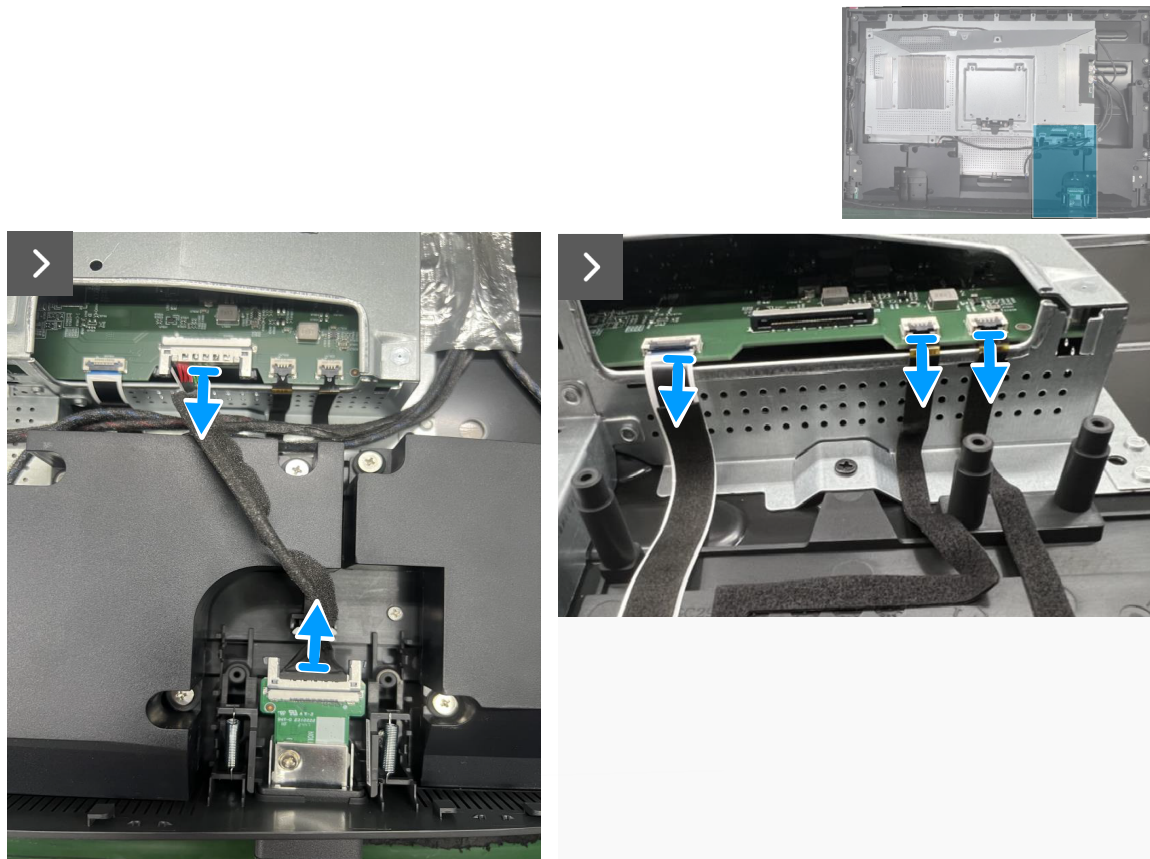


Figure 23. Disconnecting the USB cable and IR cables



10x
P3x5

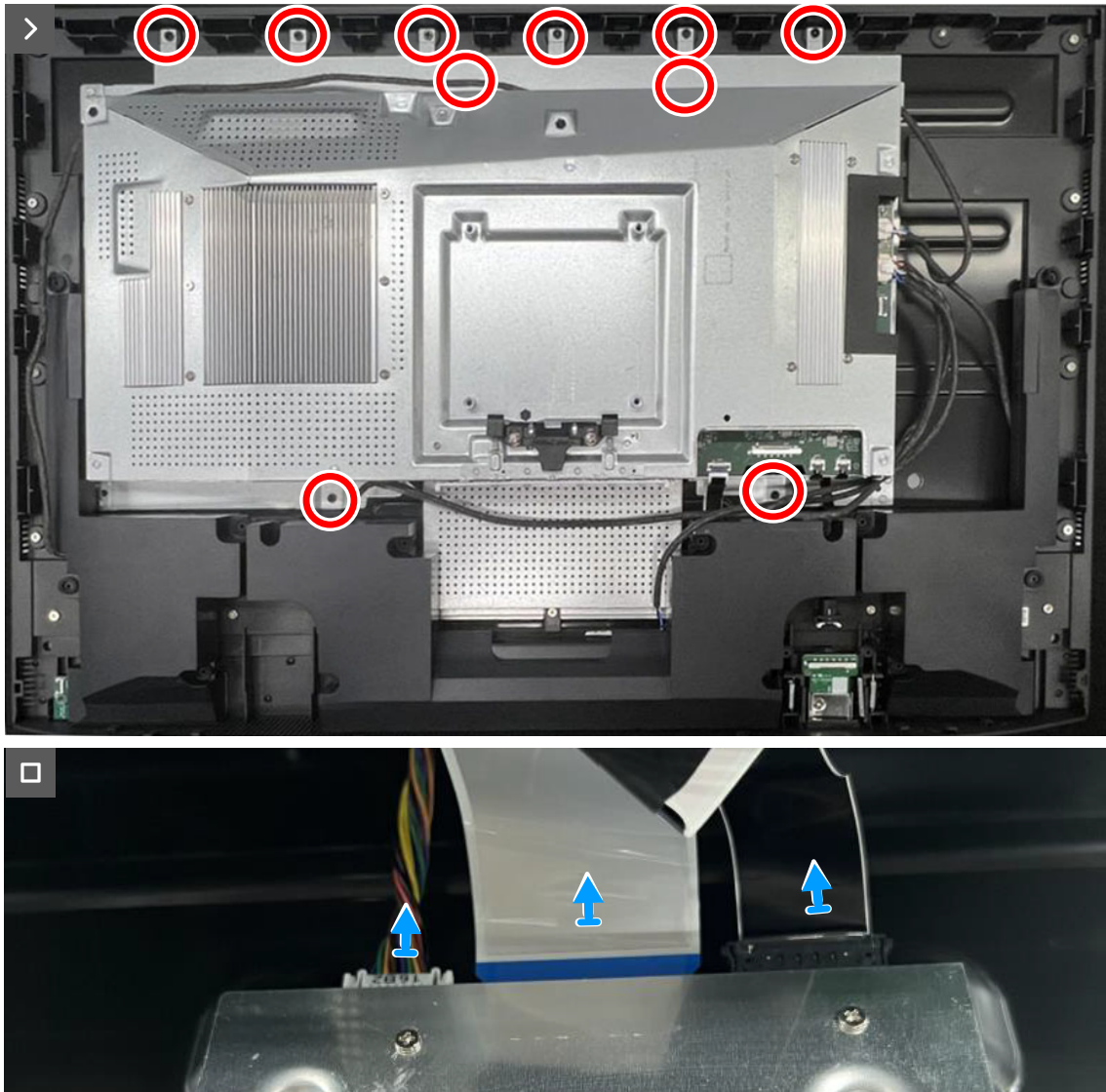


Figure 24. Removing the screws and disconnecting the display cables

Steps

1. Disconnect the system board cable, the USB board cable, the webcam module cable, and IR cable from the connectors on the system board and the display panel.
2. Remove the ten screws (P3x5) that secure the metal shield to the middle frame.
3. Lift the metal shield partially and disconnect the display cables from the connector on the display panel.

Installing the metal shield

Prerequisites

If you are replacing a component, remove the existing component before performing the installation procedure.

About this task

The following image indicates the location of the metal shield and provides a visual representation of the installation procedure.

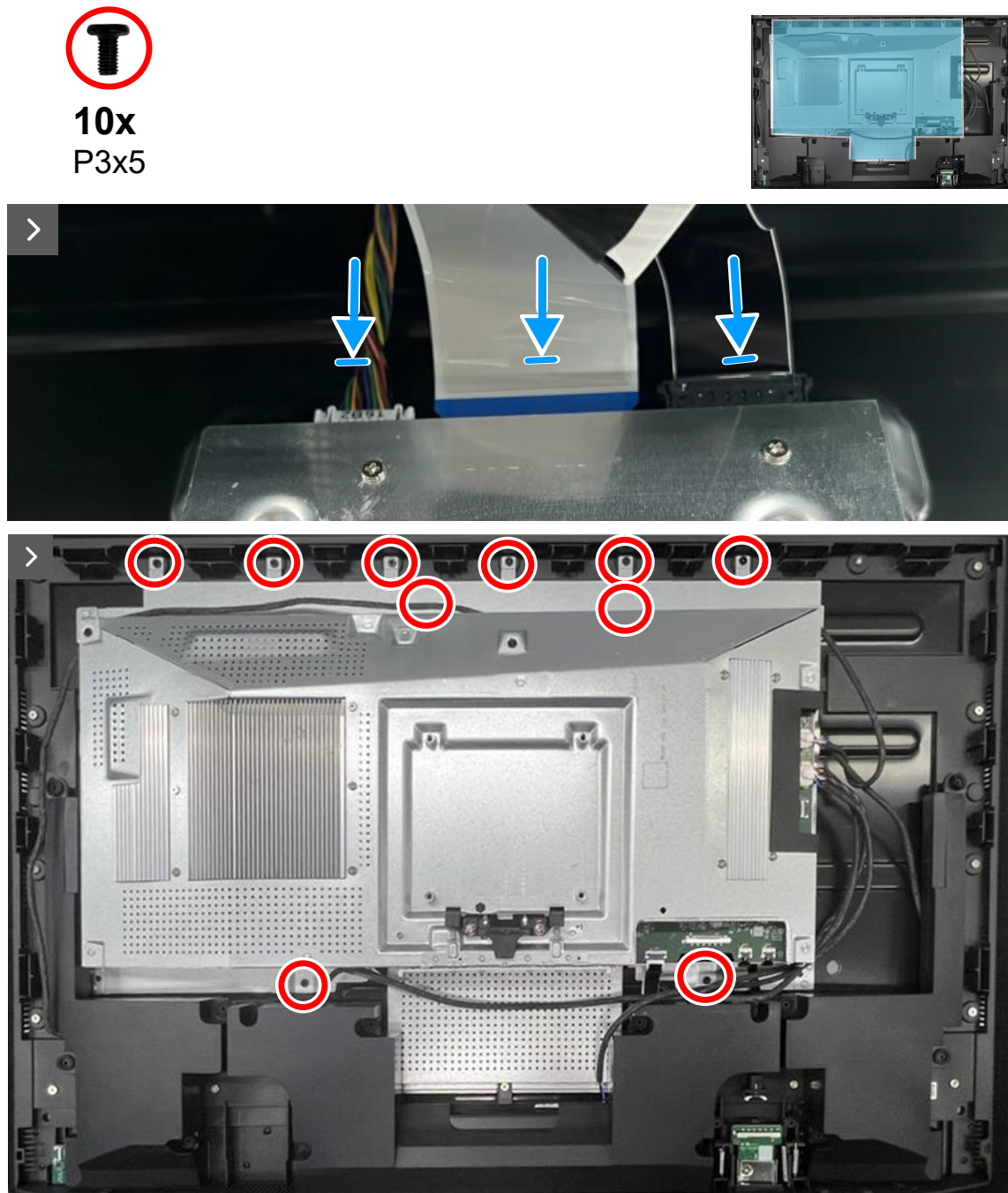


Figure 25. Connecting the display cables and replacing the screws

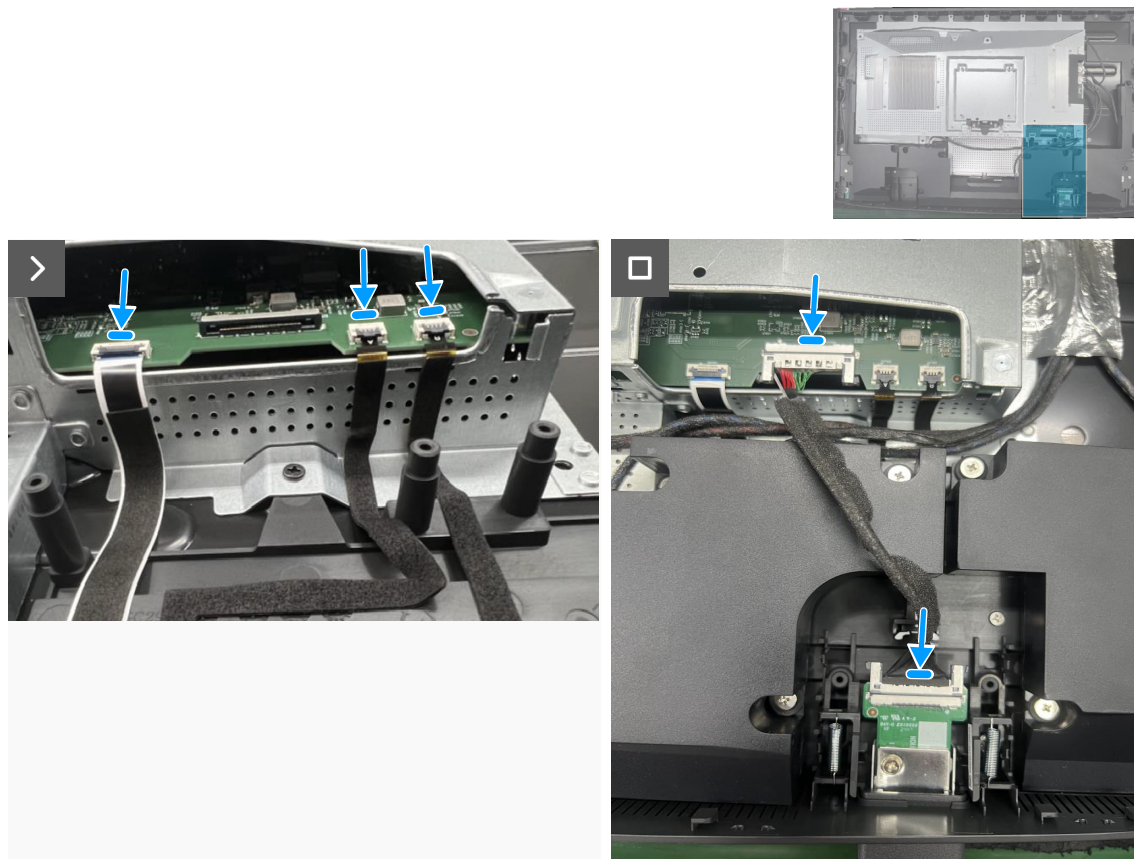


Figure 26. Connecting the USB cables and IR cables

Steps

1. Connect the display cables to the connectors on the display panel.
2. Align the screw holes of the metal shield to the screw holes on the display panel.
3. Replace the ten screws (P3x5) to secure the metal shield to the display panel.
4. Connect the system board cable, the USB board cable, the webcam module cable, and IR cable to the connectors on the system board and the display panel.

Next steps

1. Install the [speaker](#).
2. Install the [back cover](#).
3. Install the [stand](#).
4. Follow the procedure in [After working inside your monitor](#).

System board, power board, and fan

Removing the system board, power board, and fan

Prerequisites

1. Follow the procedure in [Before working inside your monitor](#).
2. Remove the [stand](#).
3. Remove the [back cover](#).
4. Remove the [speaker](#).
5. Remove the [metal shield](#).

About the task

The following image indicates the location of the system board, power board, the fan and provides a visual representation of the removal procedure.

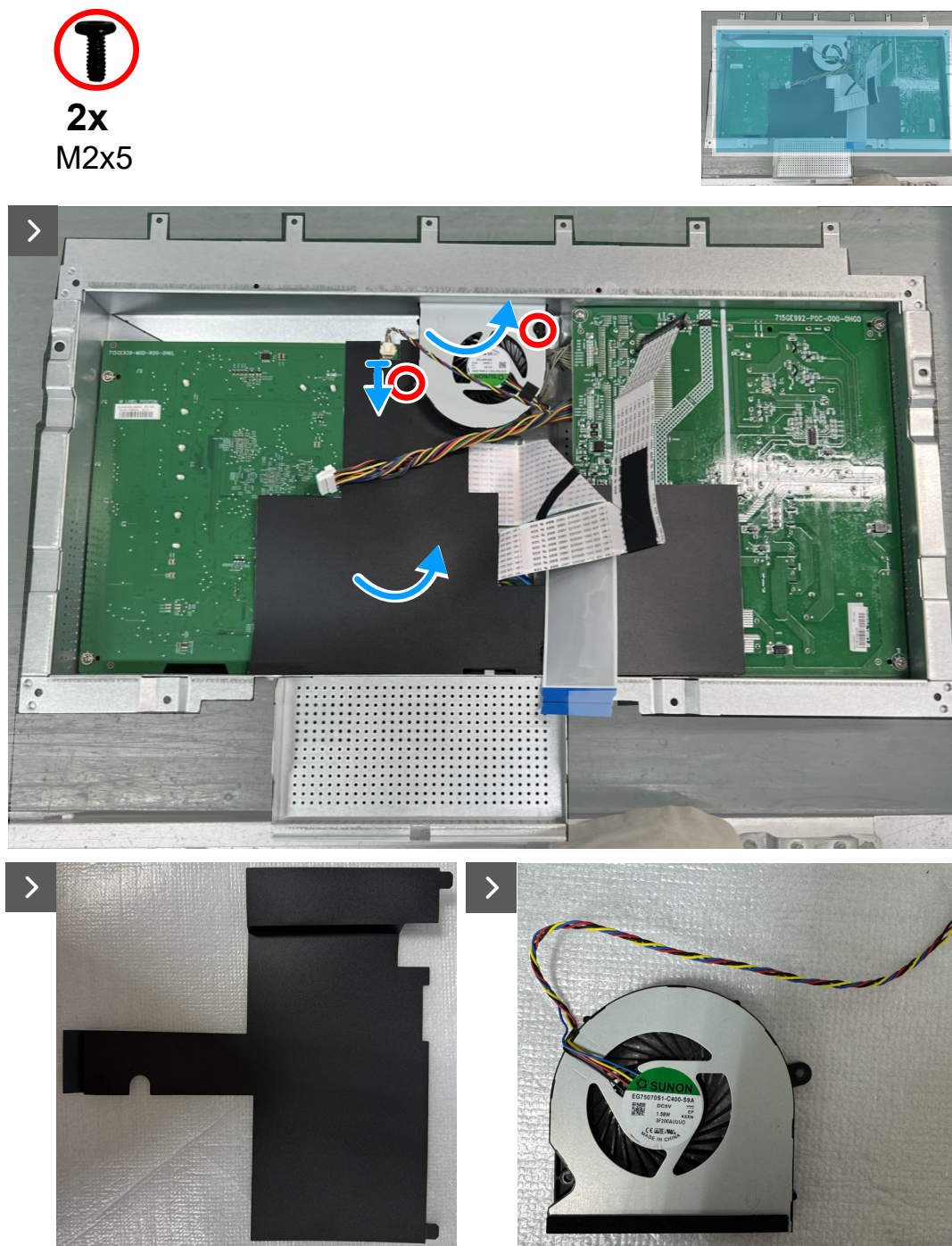


Figure 27. Removing the fan and the Mylar



Figure 28. Removing the metal shield I/O-cover

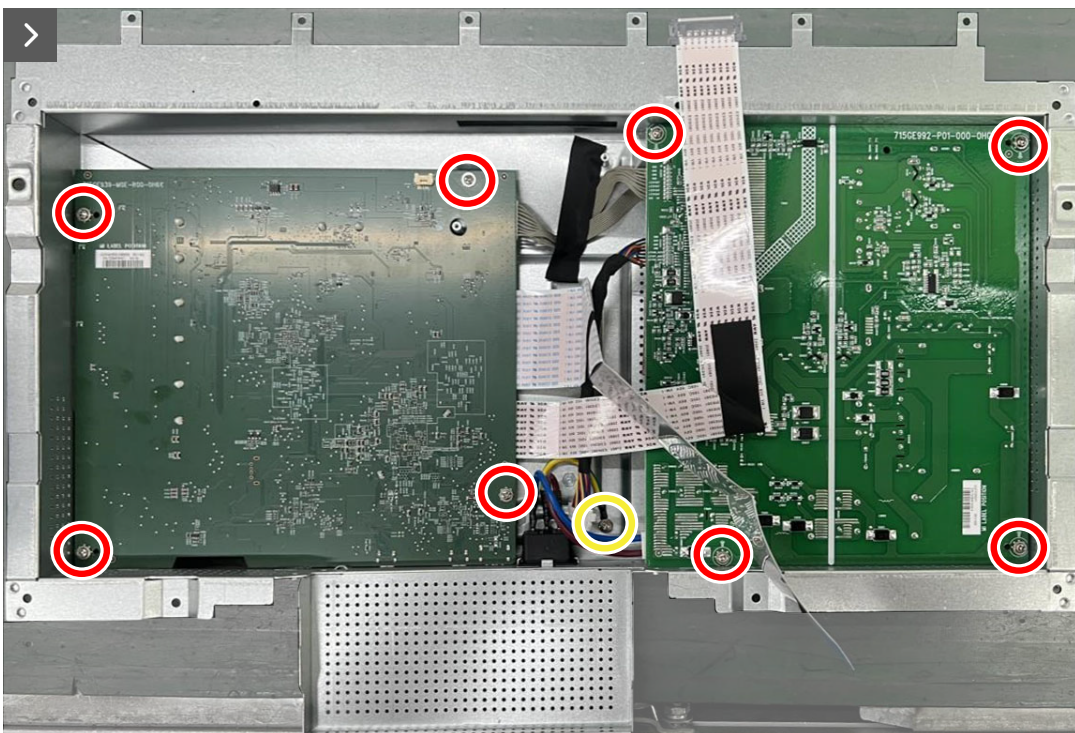
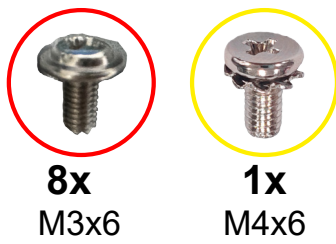


Figure 29. Removing the screws

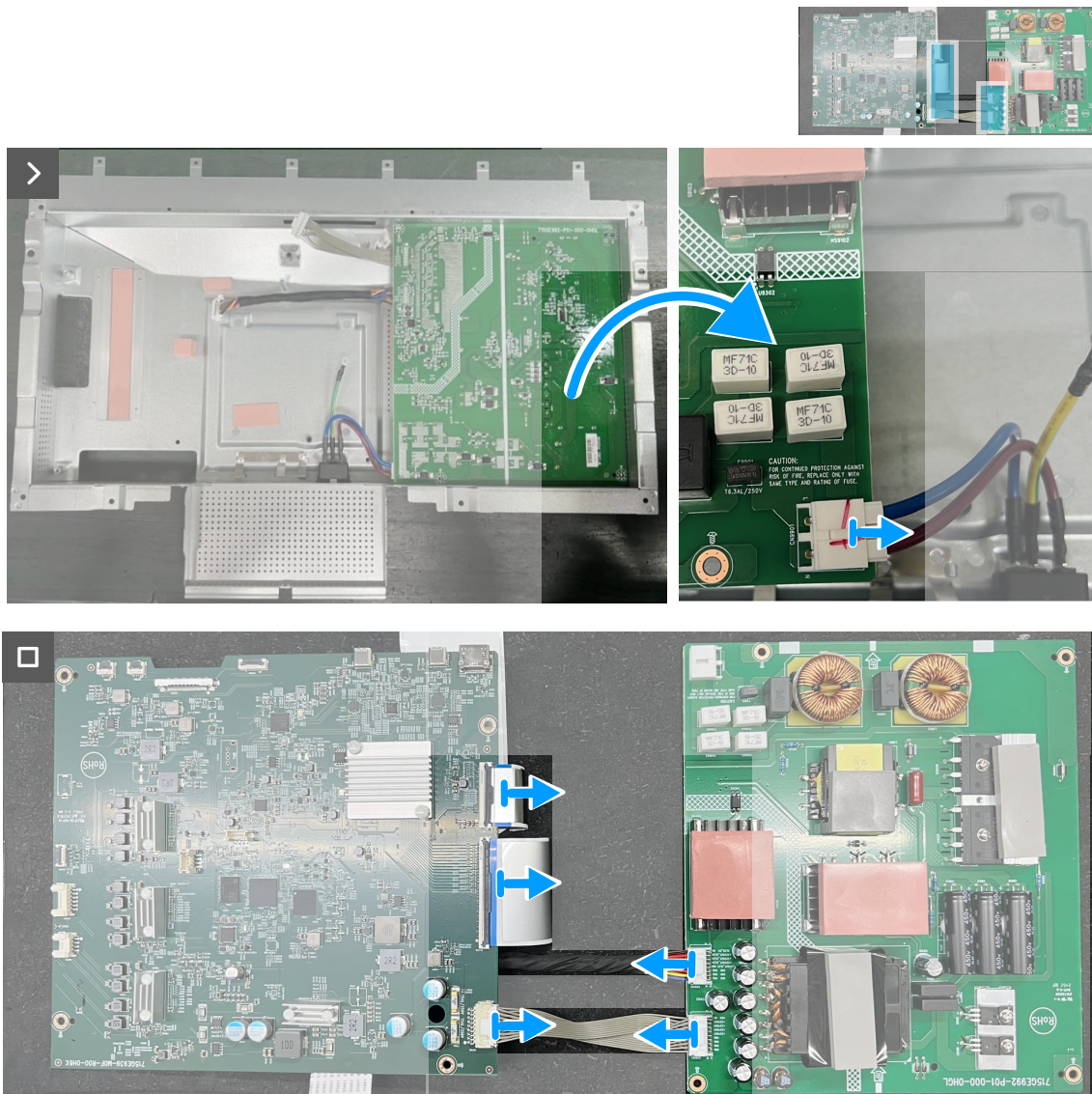


Figure 30. Disconnecting the cables

Steps

1. Remove the two screws (M2x5) that secure the fan to the metal shield.
2. Disconnect the cable to remove the fan and then remove the Mylar sheet from the system board and power board.
3. Remove the metal shield I/O-cover from the metal shield.
4. Remove the eight screws (M3x6) and the screw (M4x6) that secure the system board and power board to the metal shield.
5. Disconnect the cables from the connectors on the system board and power board.

Installing the system board, power board, and fan

Prerequisites

If you are replacing a component, remove the existing component before performing the installation procedure.

About this task

The following image indicates the location of the system board, power board, the fan and provides a visual representation of the installation procedure.

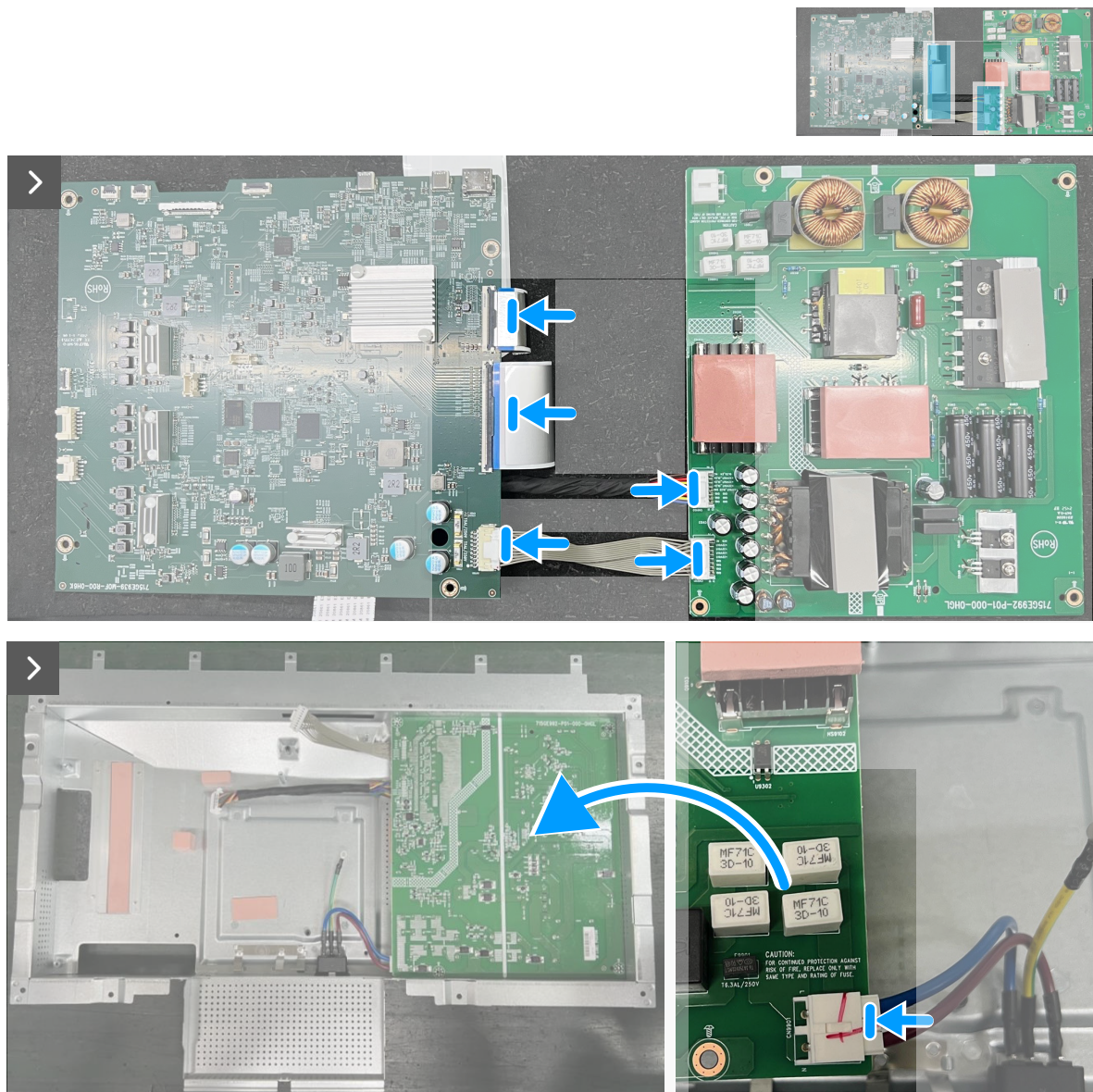


Figure 31. Connecting the cables

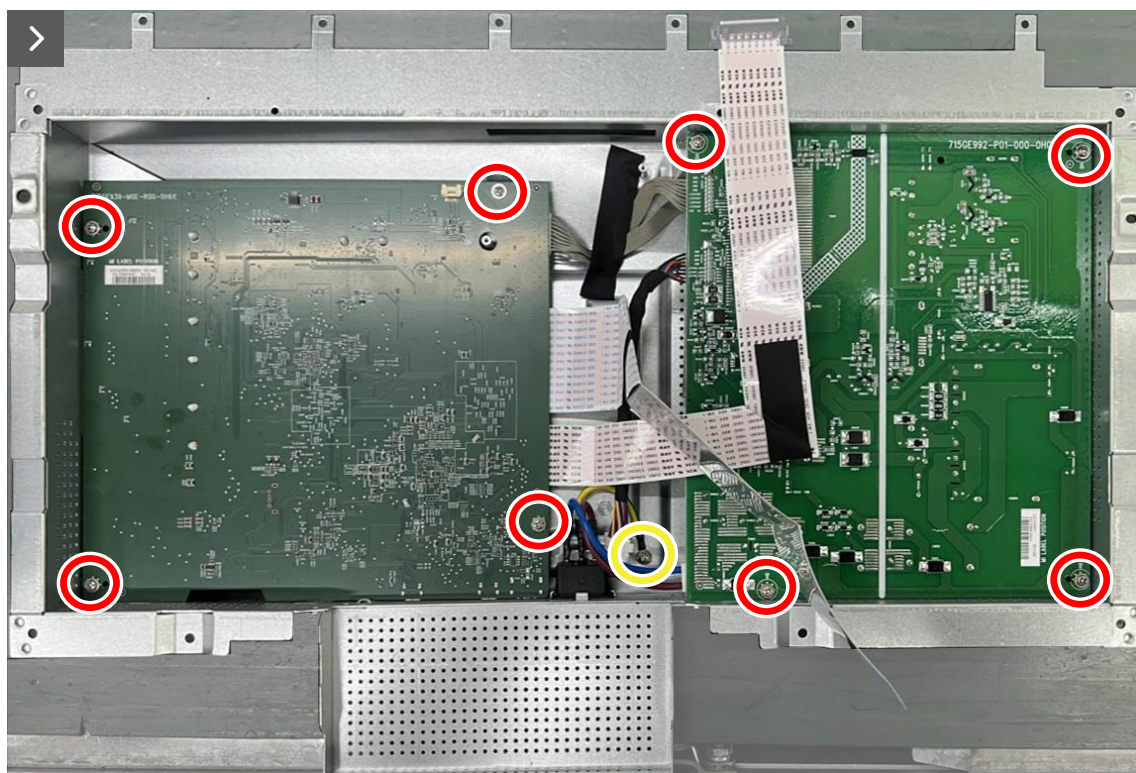
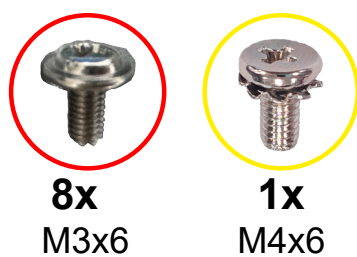


Figure 32. Replacing the screws



Figure 33. Replacing the metal shield I/O-cover



2x
M2x5

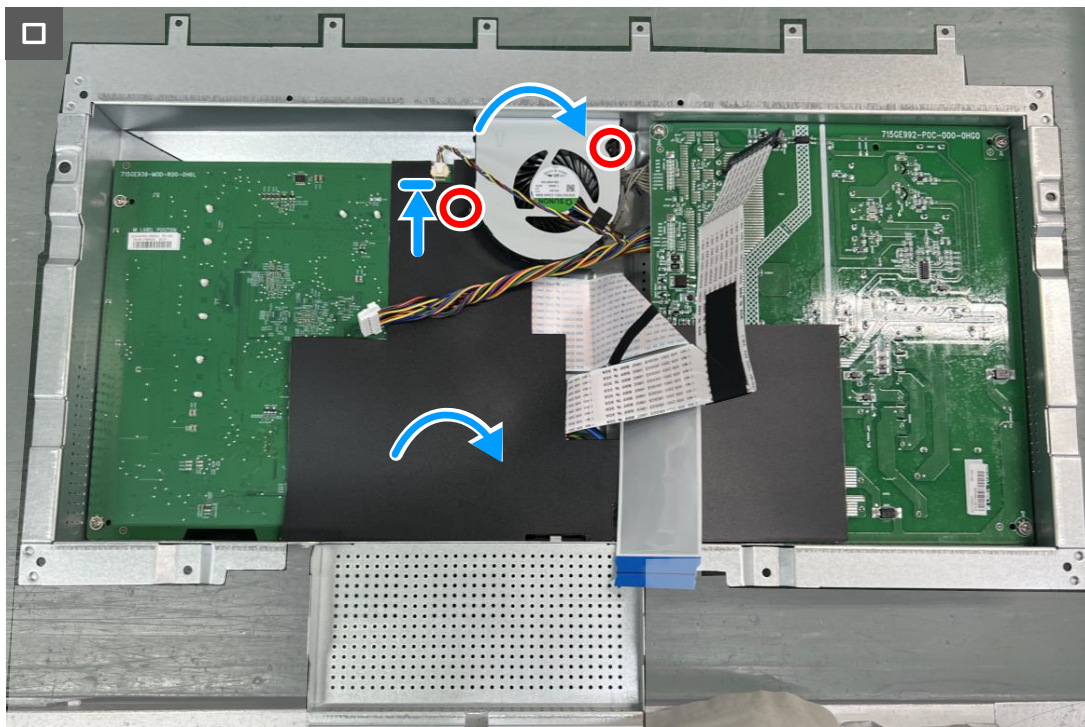
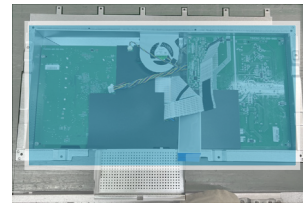


Figure 34. Installing the Mylar and the fan

Steps

1. Connect the cables to the connectors on the system board, power board, and the fan.
2. Replace the eight screws (M3x6) and the screw (M4x6) to secure the system board, power board to the metal shield.
3. Replace the metal shield I/O-cover on the metal shield.
4. Replace the two screws (M2x5) to secure the fan to the metal shield, connecting the pin.
5. Place the Mylar sheet on the system board and the power board.

Next steps

1. Install the [metal shield](#).
2. Install the [speaker](#).
3. Install the [back cover](#).

4. Install the [stand](#).
5. Follow the procedure in [After working inside your monitor](#).

Middle frame

Removing the middle frame

Prerequisites

1. Follow the procedure in [Before working inside your monitor](#).
2. Remove the [stand](#).
3. Remove the [back cover](#).
4. Remove the [speaker](#).
5. Remove the [metal shield](#).

About the task

The following image indicates the location of the middle frame and provides a visual representation of the removal procedure.

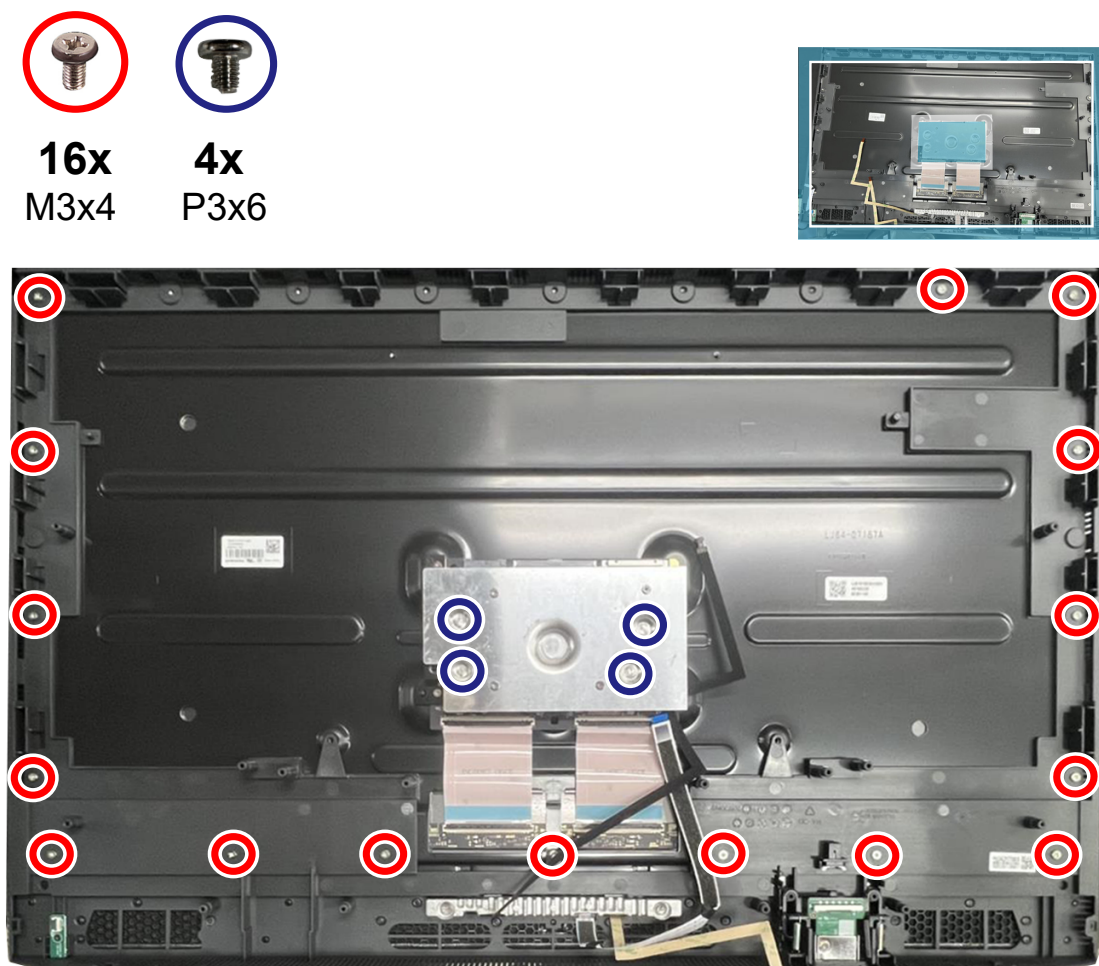


Figure 35. Removing the screws

Steps

1. Remove the sixteen screws (M3x4) that secure the middle frame to the display panel.
2. Remove the four screws (P3x6) that secure the heat sink to the display panel.
3. Lift and remove the middle frame and heat sink away from the display panel.

Installing the middle frame

Prerequisites

If you are replacing a component, remove the existing component before performing the installation procedure.

About this task

The following image indicates the location of the middle frame and provides a visual representation of the installation procedure.

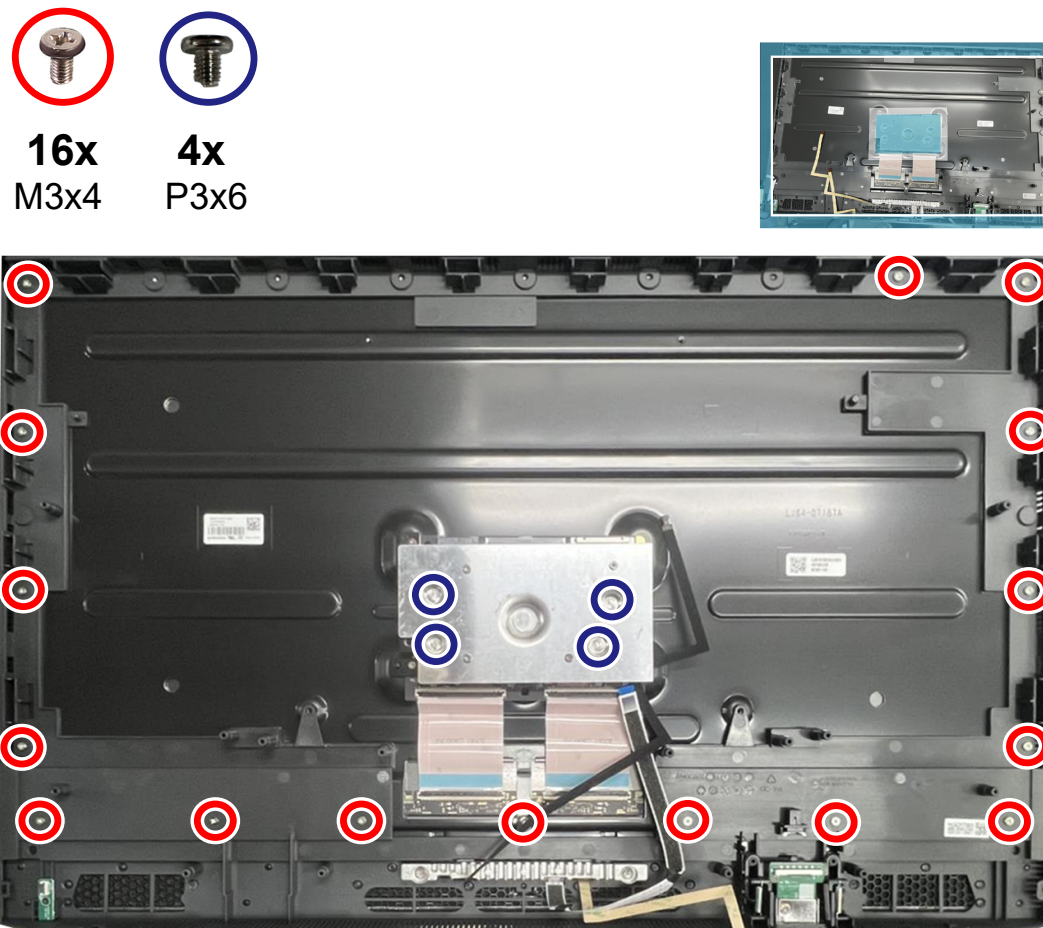


Figure 36. Replacing the screws

Steps

1. Align and place the middle frame on the display panel.
2. Replace the sixteen screws (M3x4) to secure the front trim to the display panel.
3. Place the heat sink and replace the four screws (P3x6) to secure the heat sink to the display panel.

Next steps

1. Install the [metal shield](#).
2. Install the [speaker](#).
3. Install the [back cover](#).
4. Install the [stand](#).
5. Follow the procedure in [After working inside your monitor](#).

LED board and webcam module

Removing the LED board and webcam module

Prerequisites

1. Follow the procedure in [Before working inside your monitor](#).
2. Remove the [stand](#).
3. Remove the [back cover](#).
4. Remove the [speaker](#).
5. Remove the [metal shield](#).
6. Remove the [middle frame](#).

About the task

The following image indicates the location of the LED board and webcam module and provides a visual representation of the removal procedure.

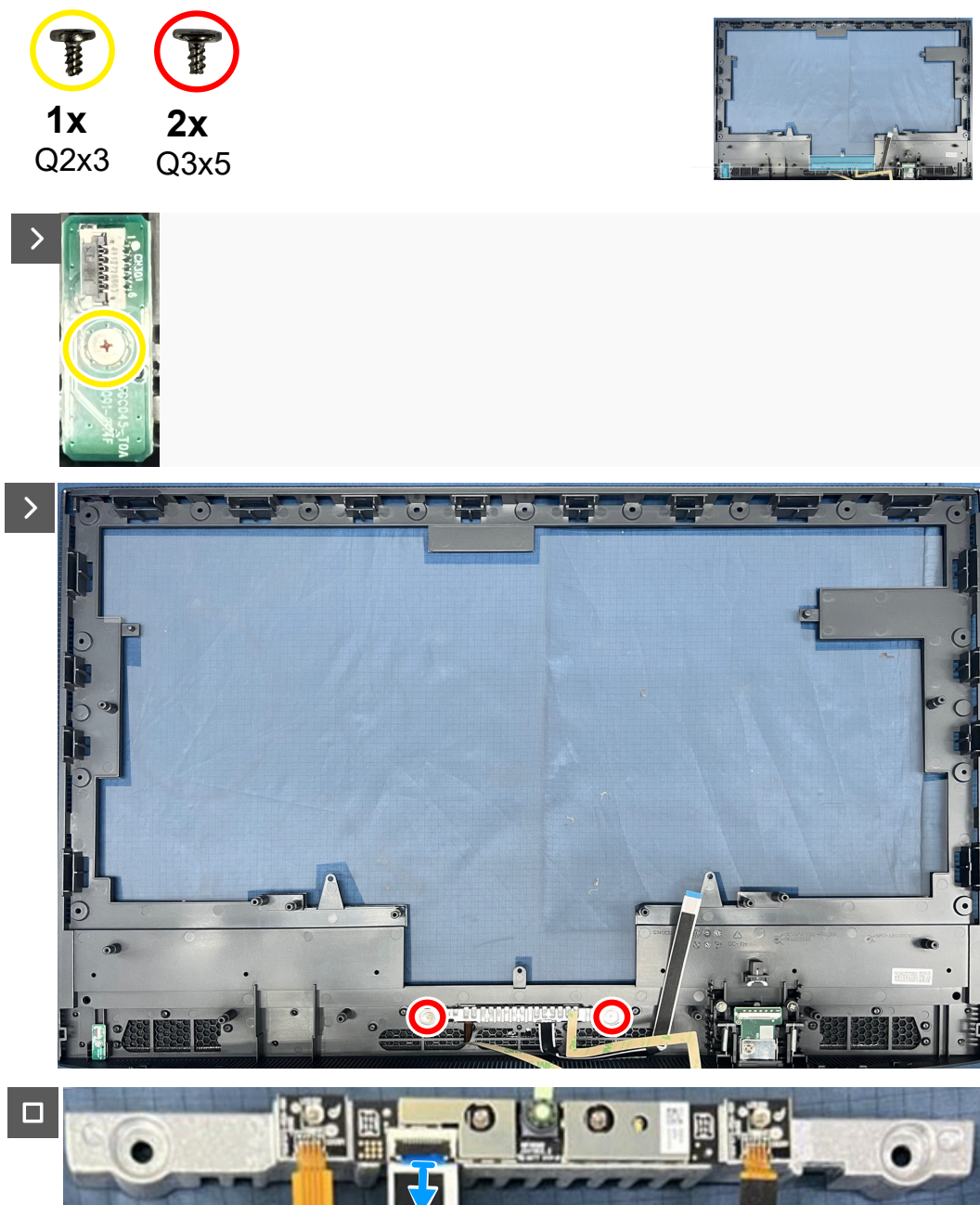


Figure 37. Removing the LED board and webcam module

Steps

1. Remove the screw (Q2x3) that secure the LED board to the middle frame.
2. Remove the two screws (Q3x5) that secure the webcam module to the middle frame.

Installing the LED board and webcam module

Prerequisites

If you are replacing a component, remove the existing component before performing the installation procedure.

About this task

The following image indicates the location of the LED board, webcam module and provides a visual representation of the installation procedure.

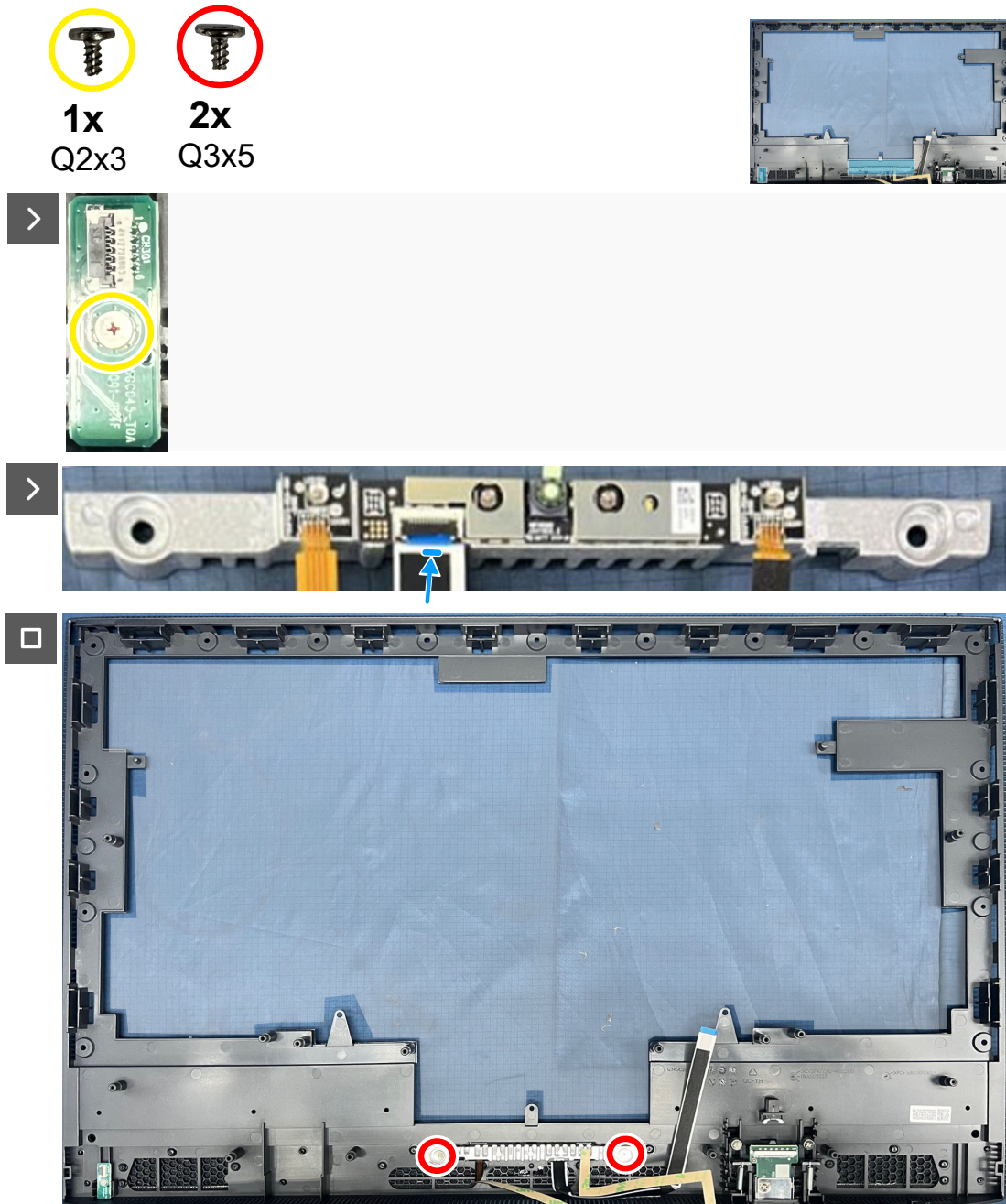


Figure 38. Installing the LED board and webcam Module

Steps

1. Replace the screw (Q2x3) to secure the LED board to the middle frame.
2. Replace the two screws (Q3x5) to secure the webcam module to the middle frame.

Next steps

1. Install the [middle frame](#).
2. Install the [metal shield](#).
3. Install the [speaker](#).
4. Install the [back cover](#).
5. Install the [stand](#).
6. Follow the procedure in [After working inside your monitor](#).

USB board

Removing the USB board

Prerequisites

1. Follow the procedure in [Before working inside your monitor](#).
2. Remove the [stand](#).
3. Remove the [back cover](#).
4. Remove the [speaker](#).
5. Remove the [metal shield](#).
6. Remove the [middle frame](#).

About the task

The following image indicates the location of the USB board and provides a visual representation of the removal procedure.

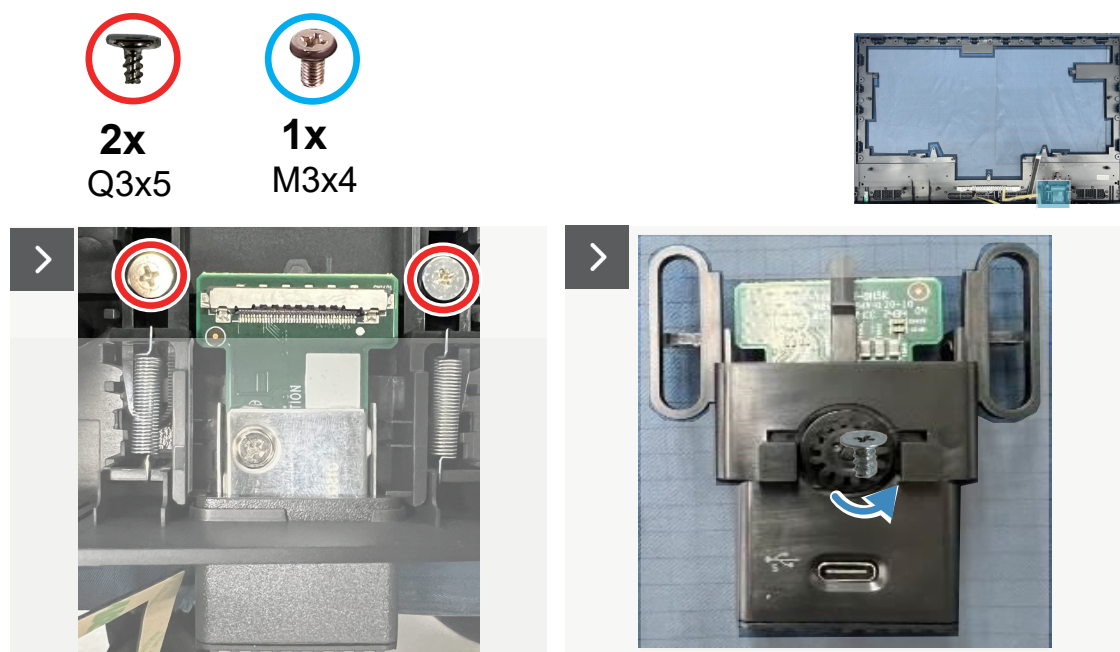




Figure 39. Removing the USB board

Steps

1. Remove the two screws (Q3x5) to remove the USB module from the middle frame.
2. Remove the USB front cover and USB rear cover.
3. Remove the screw (M3x4) that secure the USB board to the bracket bottom.

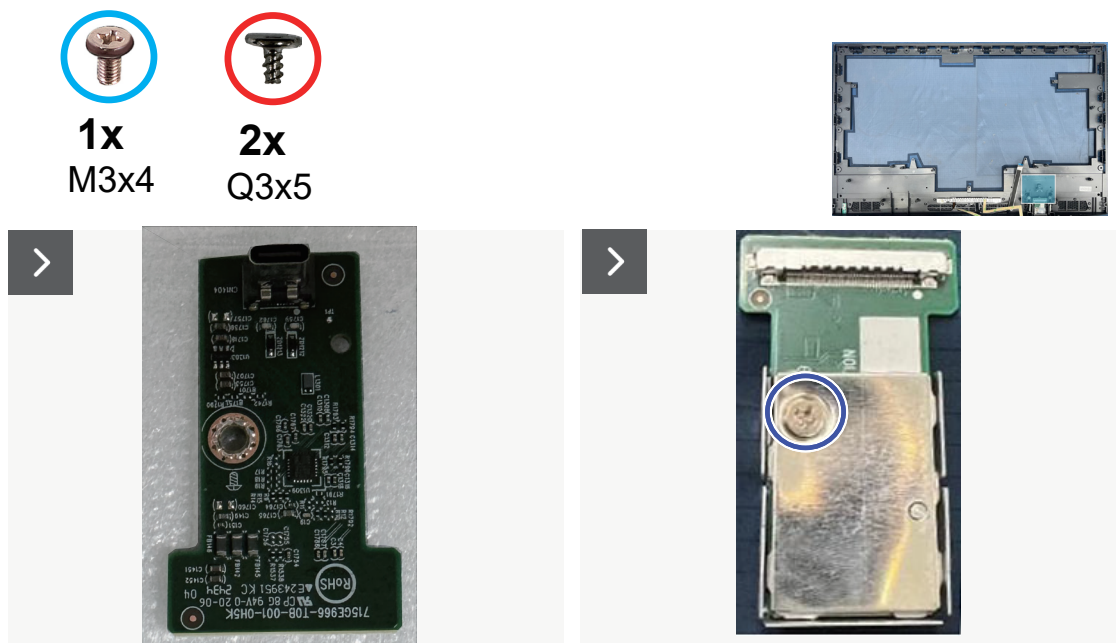
Installing the USB board

Prerequisites

If you are replacing a component, remove the existing component before performing the installation procedure.

About this task

The following image indicates the location of the USB board and provides a visual representation of the installation procedure.



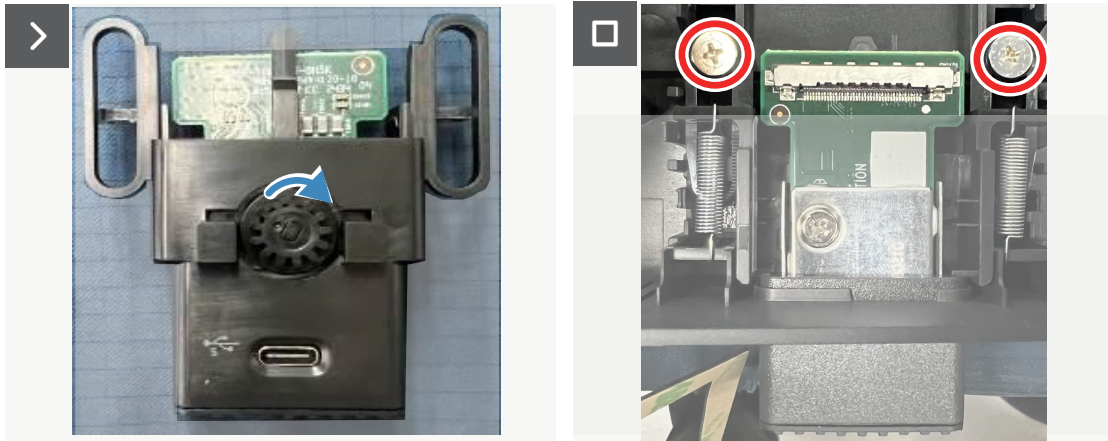


Figure 40. Installing the USB board

Steps

1. Replace the screw (M3x4) that secure the USB board to the bracket bottom
2. Replace the USB front cover and USB rear cover.
3. Replace the two screws (Q3x5) that secure the USB board to the middle frame.

Next steps

1. Install the [middle frame](#).
2. Install the [metal shield](#).
3. Install the [speaker](#).
4. Install the [back cover](#).
5. Install the [stand](#).
6. Follow the procedure in [After working inside your monitor](#).

Keypad board

Removing the keypad board

Prerequisites

1. Follow the procedure in [Before working inside your monitor](#).
2. Remove the [stand](#).
3. Remove the [back cover](#).

About the task

The following image indicates the location of the keypad board and provides a visual representation of the removal procedure.



3x
Q2x3

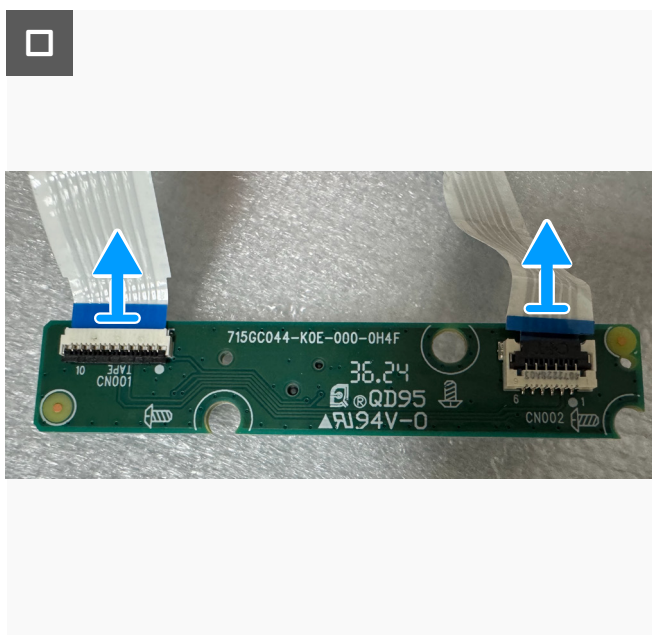
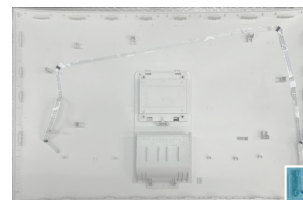


Figure 41. Removing the keypad board and disconnecting the cables

Steps

1. Remove the three screws (Q2X3) that secure the keypad board to the back cover.
2. Lift the keypad board away from the back cover.
3. Disconnect the cables from the connectors on the keypad board.

Installing the keypad board

Prerequisites

If you are replacing a component, remove the existing component before performing the installation procedure.

About this task

The following image indicates the location of the keypad board and provides a visual representation of the installation procedure.



3x
Q2x3

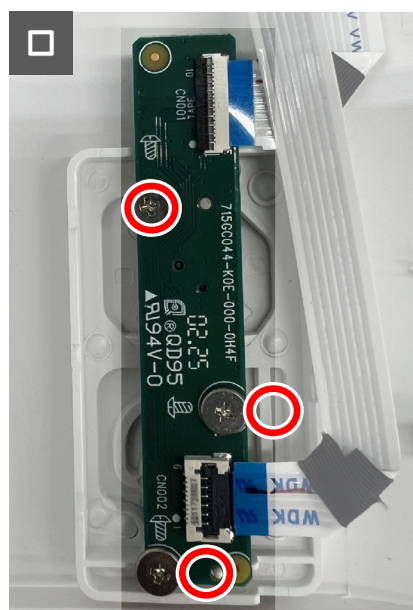
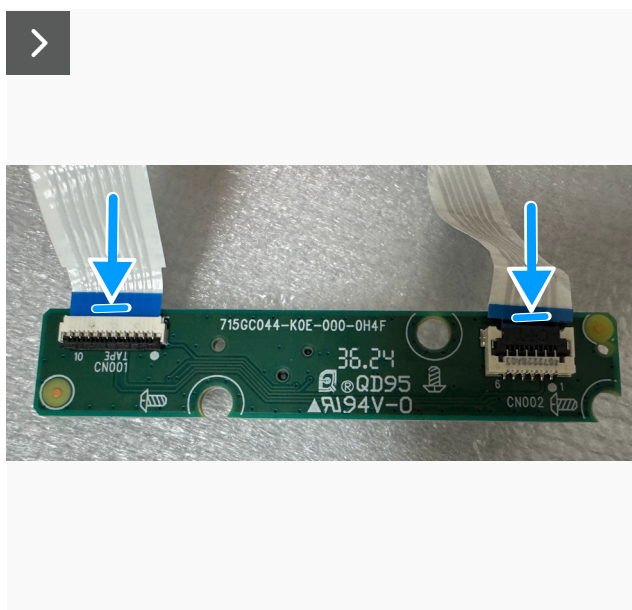


Figure 42. Connecting the cables and installing the keypad board

Steps

1. Connect the cables to the connectors on the keypad board.
2. Align and place the keypad board on the back cover.
3. Replace the three screws (Q2x3) to secure the keypad board to the back cover.

Next steps

1. Install the [back cover](#).
2. Install the [stand](#).
3. Follow the procedure in [After working inside your monitor](#).

Troubleshooting

⚠ WARNING: Before you begin any of the procedures in this section, follow the [Safety instructions](#).

Self-Test

Your monitor provides a self-test feature that allows you to check whether your monitor is functioning properly. If your monitor and computer are properly connected but the monitor screen remains dark, run the monitor self-test by performing the following steps:

1. Turn off both your computer and the monitor.
2. Unplug the video cable from the computer.
3. Turn on the monitor.

If the monitor cannot sense a video signal and is working correctly, the following message appears:

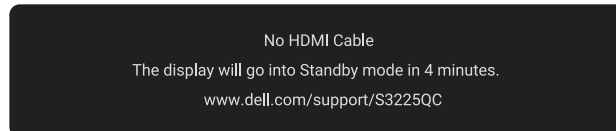


Figure 43. The message of No HDMI cable

or

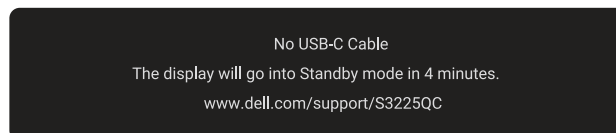


Figure 44. The message of No USB-C cable

① NOTE: The message may slightly vary according to the connected input signal.

① NOTE: While in self-test mode, the power LED remains white.

4. This message can also appear during normal system operation if the video cable gets disconnected or damaged.
5. Turn off your monitor, reconnect the video cable, and then turn on both the computer and the monitor.

If your monitor screen remains blank after performing the above steps, it indicates that the monitor is functioning properly. Check the video controller and computer.

Built-in diagnostics

Your monitor includes a built-in diagnostic tool to help you determine whether the screen abnormality is due to an issue with the monitor or with your computer and video card.

To run the built-in diagnostics:

1. Ensure that the screen is clean (no dust particles on the surface of the screen).
2. Press the joystick button to launch the OSD Main Menu.
3. Move the joystick button to select **Others > Self-Diagnostic** to initiate the self-diagnostic process.

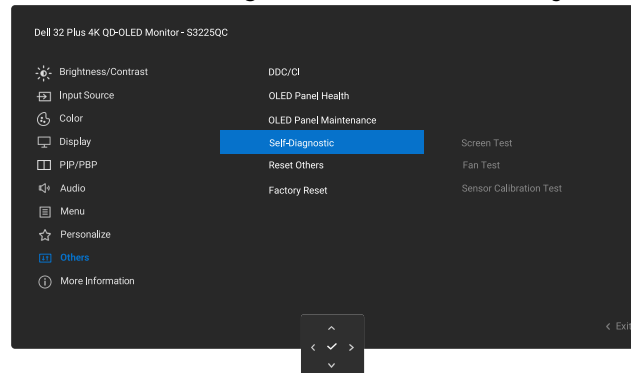


Figure 45. Built-in diagnostics

4. When initiated, a gray screen appears. Inspect the screen for abnormalities.
5. Switch the joystick button. The color of the screen changes to red. Inspect the screen for abnormalities.
6. Repeat step 5 and inspect the screen when it displays the colors green, blue, black, and white followed by the on-screen text.
7. The test is complete when the text screen appears. To exit, click the joystick button again.

If you do not detect any screen abnormalities upon using the Built-in diagnostics tool, the monitor is functioning properly. Check the video card and computer.

Common problems

The following table contains general information about common monitor problems that you might encounter and the possible solutions:



Table 1. Common problems

Common symptoms	What you experience	Possible solutions
No video/power LED off	No picture	<ul style="list-style-type: none"> • Ensure that the video cable connecting the monitor and the computer is properly connected and secure. • Verify that the power outlet is functioning properly using any other electrical equipment. • Ensure that the power button is pressed. • Ensure that the correct input source is selected. For more information, see the <i>Input Source</i> menu in the <i>User's Guide</i> of S3225QC.
No video/power LED on	No picture or no brightness	<ul style="list-style-type: none"> • Increase brightness and contrast controls using the OSD. • Perform monitor self-test feature check. • Check for bent or broken pins in the video cable connector. • Run the built-in diagnostics. For more information, see Built-in diagnostics. • Ensure that the correct input source is selected. For more information, see the <i>Input Source</i> menu in the <i>User's Guide</i> of S3225QC.
Poor focus	Picture is fuzzy, blurry, or ghosting	<ul style="list-style-type: none"> • Eliminate video extension cables. • Reset the monitor to factory settings (Factory Reset). • Change the video resolution to the correct aspect ratio.
Shaky/jittery video	Wavy picture or fine movement	<ul style="list-style-type: none"> • Reset the monitor to factory settings (Factory Reset). • Check environmental factors. • Relocate the monitor and test in another room.
Missing pixels	OLED screen has spots	<ul style="list-style-type: none"> • Cycle power On-Off. • Pixel that is permanently off is a natural defect that can occur in OLED technology. • For more information about Dell Monitor Quality and Pixel Policy, see www.dell.com/pixelguidelines.
Stuck-on pixels	OLED screen has bright spots	<ul style="list-style-type: none"> • Cycle power On-Off. • Pixel that is permanently off is a natural defect that can occur in OLED technology. • For more information about Dell Monitor Quality and Pixel Policy, see www.dell.com/pixelguidelines.
Brightness problems	Picture too dim or too bright	<ul style="list-style-type: none"> • Reset the monitor to factory settings (Factory Reset). • Adjust brightness and contrast controls using the OSD.
Geometric distortion	Screen not centered correctly	<ul style="list-style-type: none"> • Reset the monitor to factory settings (Factory Reset).
Synchronization problems	Screen is scrambled or appears torn	<ul style="list-style-type: none"> • Reset the monitor to factory settings (Factory Reset). • Perform monitor self-test feature check (see Self-Test) to determine if the scrambled screen appears in self-test mode. • Check for bent or broken pins in the video cable connector. • Restart the computer in the safe mode.
Safety-related issues	Visible signs of smoke or sparks	<ul style="list-style-type: none"> • Do not perform any troubleshooting steps. • Contacting Dell immediately.
Intermittent problems	Monitor malfunctions on and off	<ul style="list-style-type: none"> • Ensure that the video cable connecting the monitor to the computer is connected properly and is secure. • Reset the monitor to factory settings (Factory Reset). • Perform a monitor self-test feature check (see Self-Test) to determine if the scrambled screen appears in self-test mode.

Common symptoms	What you experience	Possible solutions
Missing color	Picture missing color	<ul style="list-style-type: none"> Perform a monitor self-test feature check (see Self-Test). Ensure that the video cable connecting the monitor to the computer is connected properly and is secure. Check for bent or broken pins in the video cable connector.
Wrong color	Picture color not good	<ul style="list-style-type: none"> Change the settings of the Preset Modes in the Color menu OSD depending on the application. Adjust the R/G/B values under Custom Color in the Color menu OSD. Change the Input Color Format to RGB or YCbCr in the Color settings OSD. Run the built-in diagnostics. For more information, see Built-in diagnostics.
Image retention from a static image left on the monitor for a long period of time	A faint shadow from the static image displayed appears on the screen	<ul style="list-style-type: none"> Set the screen to turn off after a few minutes of screen idle time. This can be adjusted in the Windows Power Options or Mac Energy Saver setting. Alternatively, use a dynamically changing screensaver.
Video ghosting or overshooting	Video ghosting, shadows or color smear while scrolling	<ul style="list-style-type: none"> Change the Response Time in the Display menu OSD to Normal.
Screen image is too small	Image is centered on the screen, but does not fill the entire viewing area	<ul style="list-style-type: none"> Check the Aspect Ratio setting in the Display menu OSD. Reset the monitor to factory settings (Factory Reset).
Cannot adjust the monitor with the joystick	OSD does not appear on the screen	<ul style="list-style-type: none"> Turn off the monitor, unplug the power cable, plug it back, and then turn on the monitor. Check whether the OSD menu is locked. If yes, move and hold the joystick up/down/left/right for four seconds to unlock (see Lock and Locking the <i>control buttons</i> in the <i>User's Guide</i> of S3225QC).
No input signal when you press the power button or press the joystick	No picture, the LED light is white	<ul style="list-style-type: none"> Check the signal source. Ensure the computer is not in the power saving mode by moving the mouse or pressing any key on the keyboard. Check whether the signal cable is plugged in properly. Re-plug the signal cable if necessary. Reset the computer or video player.
The picture does not fill the entire screen	The picture cannot fill the height or width of the screen	<ul style="list-style-type: none"> Due to different video formats (aspect ratio) of DVDs, the monitor may display in full screen. Run the built-in diagnostics. For more information, see Built-in diagnostics.

Universal Serial Bus (USB) specific problems

Table 2. Universal Serial Bus (USB) specific problems

Common symptoms	What you experience	Possible solutions
USB interface is not working	USB peripherals are not working	<ul style="list-style-type: none"> • Check that your monitor is turned on. • Reconnect the upstream cable to your computer. • Reconnect the USB peripherals (downstream connector). • Turn the monitor off and then back on again. • Reboot the computer. • Some USB devices like external portable hard drive require higher electric current; connect the device directly to the computer system.
USB Type-C port with  icon on the rear side of the monitor does not supply power	USB peripherals cannot be charged	<ul style="list-style-type: none"> • Check that the connected device is compliant with the USB-C specification. The USB Type-C port (video and data) with  icon supports USB 3.2 Gen 1 and an output of 90 W. • Check that you use the USB Type-C cable shipped with your monitor.
USB 5 Gbps (USB 3.2 Gen 1) interface is slow	USB 5 Gbps (USB 3.2 Gen 1) peripherals working slowly or not working at all	<ul style="list-style-type: none"> • Check that your computer is USB 5 Gbps (USB 3.2 Gen 1) - compatible. • Some computers have USB 3.2, USB 2.0, and USB 1.1 ports. Ensure that the correct USB port is used. • Reconnect the upstream cable to your computer. • Reconnect the USB peripherals (downstream connector). • Reboot the computer.
Wireless USB peripherals stop working when a USB 3.2 device is plugged in	Wireless USB peripherals responding slowly or only working as the distance between itself and its receiver decreases	<ul style="list-style-type: none"> • Increase the distance between the USB 3.2 peripherals and the wireless USB receiver. • Position your wireless USB receiver as close as possible to the wireless USB peripherals. • Use a USB-extender cable to position the wireless USB receiver as far away as possible from the USB 3.2 port.
Wireless USB mouse does not work properly	When connected to a USB port on the Quick Access panel at the bottom of the monitor, the wireless USB mouse stops responding (or becomes unresponsive) during use	<ul style="list-style-type: none"> • Unplug the wireless USB mouse receiver and re-plug it into the rear side USB port of the monitor.

Audio specific problems

Table 3. Audio specific problems

Common symptoms	What you experience	Possible solutions
No Audio (muted, source issue, configuration issue, speakers, rattling).	No sound	<ul style="list-style-type: none"> • Increase volume control from the OSD. • Ensure that the power is turned on and the screen is display normally. • Ensure that the correct input source is selected in the Input Source menu. • Ensure that the signal cable connecting the monitor and the computer is properly connected and secure. • Ensure that the sample rate of audio is on valid range (32k/44.1k/48k/96k/192k). • Verify that the power outlet is functioning properly using any other electrical equipment. • Reset the monitor to factory settings (Factory Reset).
Head tracking issue (hardware, environment, software, blocked).	No Action	<ul style="list-style-type: none"> • Ensure that the Spatial setting is ON. • Ensure that the person is at an optimal distance from the screen for head tracking detection. • Ensure that the lens of the camera is not obscured by objects. • Reset the monitor to factory settings (Factory Reset).
Sound issue (network issue, sampling rate, and so on).	No 3D Spatial Effect	<ul style="list-style-type: none"> • Ensure that the Spatial setting is ON. • Ensure that the person is at an optimal distance from the camera. • Ensure that audio format meets the specified requirements (Stereo, Binaural, or Multi-channel). • Reset the monitor to factory settings (Factory Reset). • Ensure the audio source contains spatial contents. For more information, see <i>How to experience 3D Spatial Audio?</i>
Sound issue (network issue, sampling rate, and so on).	Sound noise	<ul style="list-style-type: none"> • Ensure that the audio format is performing correct sample rate. • Ensure that the stand of the monitor is placed on a stable platform. • Ensure that the audio device is performing output normally. • Reset the monitor to factory settings (Factory Reset).
Compatibility issue (change audio source to USB for UAC2.0).	Sound noise or not sound	<ul style="list-style-type: none"> • Ensure that the audio setting is configured for the correct HDMI/USB device. • Reconnect the signal cable with the device again. • Ensure that the USB device supports the UAC2.0 format. • Cycle power on-off. • Reset the monitor to factory settings (Factory Reset).

Regulatory information

FCC notices (U.S. Only) and other regulatory information

For FCC notices and other regulatory information, see the regulatory compliance website at www.dell.com/regulatory_compliance.

EU product database for energy label and product information sheet

S3225QC: <https://eprel.ec.europa.eu/qr/2200407>

Contacting Dell

To contact Dell for sales, technical support, or customer service issues, see www.dell.com/contactdell.

- ① **NOTE:** Availability varies by country, region, or product, and some services may not be available in your country.
- ① **NOTE:** If you do not have an active Internet connection, you can find contact information about your purchase invoice, packing slip, bill, or Dell product catalog.