

# **Dell 32 Plus 4K QD-OLED Monitor**

## **S3225QC**

### Teardown Instructions

## Notes, cautions, and warnings

 **NOTE:** A NOTE indicates important information that helps you make better use of your product.

 **CAUTION:** A CAUTION indicates either potential damage to hardware or loss of data and tells you how to avoid the problem.

 **WARNING:** A WARNING indicates a potential for property damage, personal injury, or death.



# Contents

<b>Safety instructions</b>	<b>5</b>
Before working inside your monitor	5
After working inside your monitor	5
<b>Disassembly and reassembly</b>	<b>6</b>
Recommended tools	6
Screw list	6
Stand	8
Removing the stand	8
Installing the stand	8
Back cover	10
Removing the back cover	10
Installing the back cover	11
Speaker	14
Removing the speaker	14
Installing the speaker	16
Metal shield	18
Removing the metal shield	18
Installing the metal shield	20
System board, power board, and fan	21
Removing the system board, power board, and fan	21
Installing the system board, power board, and fan	24
Middle frame	28
Removing the middle frame	28
Installing the middle frame	29
LED board and webcam module	30
Removing the LED board and webcam module	30
Installing the LED board and webcam module	31
USB board	32
Removing the USB board	32
Installing the USB board	33
Keypad board	34
Removing the keypad board	34
Installing the keypad board	35
<b>Regulatory information</b>	<b>37</b>
FCC notices (U.S. Only) and other regulatory information	37
EU product database for energy label and product information sheet	37
<b>Contacting Dell</b>	<b>38</b>

# Safety instructions

Use the following safety guidelines to protect your monitor from potential damage and to ensure your personal safety. Unless otherwise noted, each procedure included in this document assumes that you have read the safety information that is shipped with your monitor.

**NOTE:** Before using the monitor, read the safety information that is shipped with your monitor and printed on the product. Keep the documentation at a secure location for future reference.

**WARNING:** Use of controls, adjustments, or procedures other than those specified in this documentation may result in exposure to shock, electrical hazards and/or mechanical hazards.

**CAUTION:** The possible long-term effect of listening to audio at high volume through the headphones (on a monitor that supports it) may damage your hearing ability.

- Place the monitor on a solid surface and handle it carefully.
  - The screen is fragile and can be damaged if dropped or press with a sharp object.
  - Ensure that your monitor is electrically rated to operate with the AC power available in your location.
  - Keep the monitor in room temperature. Excessive cold or hot conditions can have an adverse effect on the liquid crystal of the display.
  - Connect the power cable from the monitor to a wall outlet that is near and accessible.
- Do not place and use the monitor on a wet surface or near water.
- Do not subject the monitor to severe vibration or high impact conditions. For example, do not place the monitor inside a car trunk.
- Unplug the monitor when it is going to be left unused for an extended period.
- To avoid electric shock, do not attempt to remove any cover or touch the inside of the monitor.
- Read these instructions carefully. Keep this document for future reference. Follow all warnings and instructions marked on the product.
- Certain monitors can be wall mounted using the VESA mount that is sold separately. Ensure to use the correct VESA specifications as mentioned in the wall mounting section of the User's Guide.

For information about safety instructions, see the Safety, Environmental, and Regulatory Information (SERI) document that is shipped with your monitor.

## Before working inside your monitor

### Steps

1. Save and close all open files and exit all open applications.
  2. Turn off your monitor.
  3. Disconnect your monitor and all attached devices from their electrical outlets.
  4. Disconnect all attached network devices and peripherals, such as keyboard, mouse, and dock from your monitor.
- CAUTION:** To disconnect a network cable, first unplug the cable from your monitor and then unplug the cable from the network device.
5. Remove any media card and optical disc from your monitor, if applicable.

## After working inside your monitor

**CAUTION:** Leaving stray or loose screws inside your monitor may severely damage your monitor.

### Steps

1. Replace all screws and ensure that no stray screws remain inside your monitor.
2. Connect any external devices, peripherals, or cables you removed before working on your monitor.
3. Replace any media cards, discs, or any other parts that you removed before working on your monitor.
4. Connect your monitor and all attached devices to their electrical outlets.
5. Turn on your monitor.

# Disassembly and reassembly

**CAUTION:** The information in this section is intended for authorized service technicians in the EMEA region. Dell prohibits users from disassembling the monitor, and any damage caused by unauthorized servicing will not be covered under the warranty.

## Recommended tools











The procedures in this document may require the following tools:





- Screwdriver (Phillips-head, Hexagonal head)
- Plastic scribe

## Screw list

- NOTE:** When removing screws from a component, it is recommended to note the screw type, the quantity of screws, and then place them in a screw storage box. This is to ensure that the correct number of screws and correct screw type is restored when the component is replaced.
- NOTE:** Some computers have magnetic surfaces. Ensure that the screws are not left attached to such surfaces when replacing a component.
- NOTE:** Screw color may vary with the configuration ordered.

**Table 1. Screw list**

Component	Screw type	Quantity	Screw image
Back cover	M4x10	4	
Speaker	Q3x5	14	
Metal shield	P3x5	10	
Fan	M2x5	2	
System board	M3x6	4	
Power board	M3x6	4	
	M4x6	1	
Middle frame	M3x4	16	
Heat sink	P3x6	4	
Webcam module	Q3x5	2	

Component	Screw type	Quantity	Screw image
LED board	Q2x3	1	
USB board	Q3x5	2	
	M3x4	1	
Keypad board	Q2x3	3	

## Stand

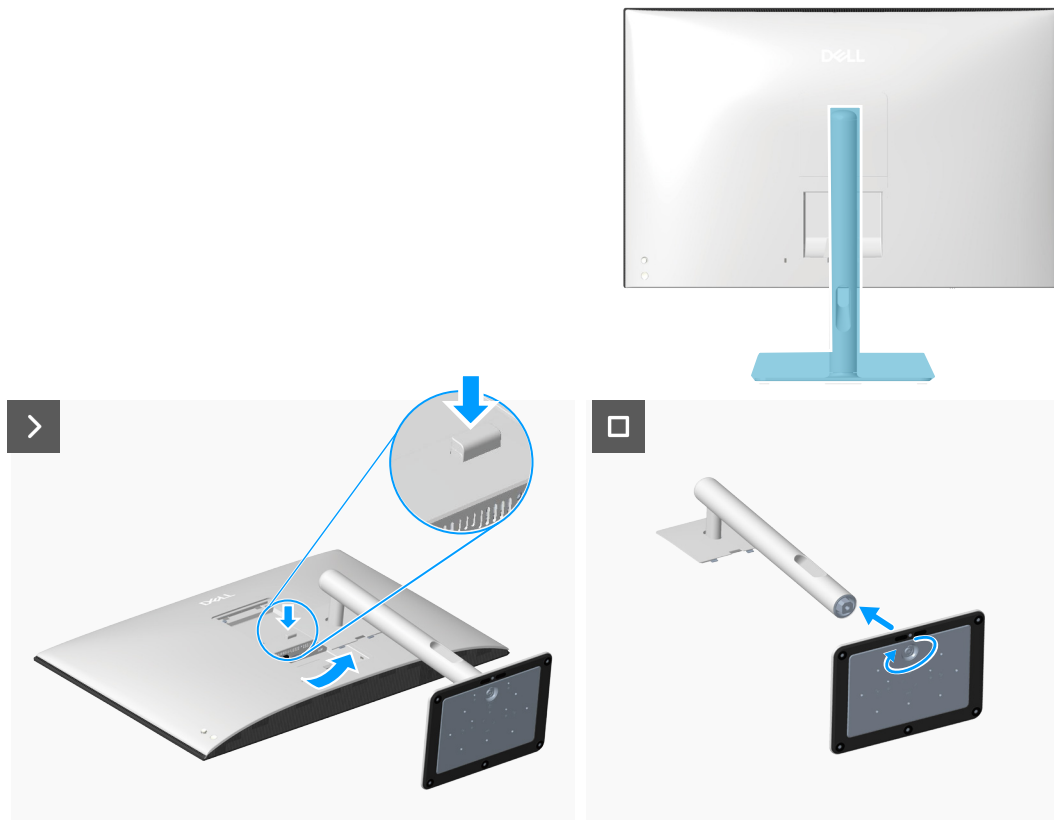
### Removing the stand

#### Prerequisites

1. Follow the procedure in [Before working inside your monitor](#).

#### About the task

The following image indicates the location of the stand and provides a visual representation of the removal procedure.



**Figure 1. Removing the stand**

#### Steps

1. Place the monitor on a clean, flat surface on a soft cloth or cushion.
2. Press the release button and pull the stand assembly away from the monitor.
3. Open the screw handle at the bottom of the stand base and turn it anti-clockwise to unlock the riser from the base.
4. Detach the stand riser from the stand base.

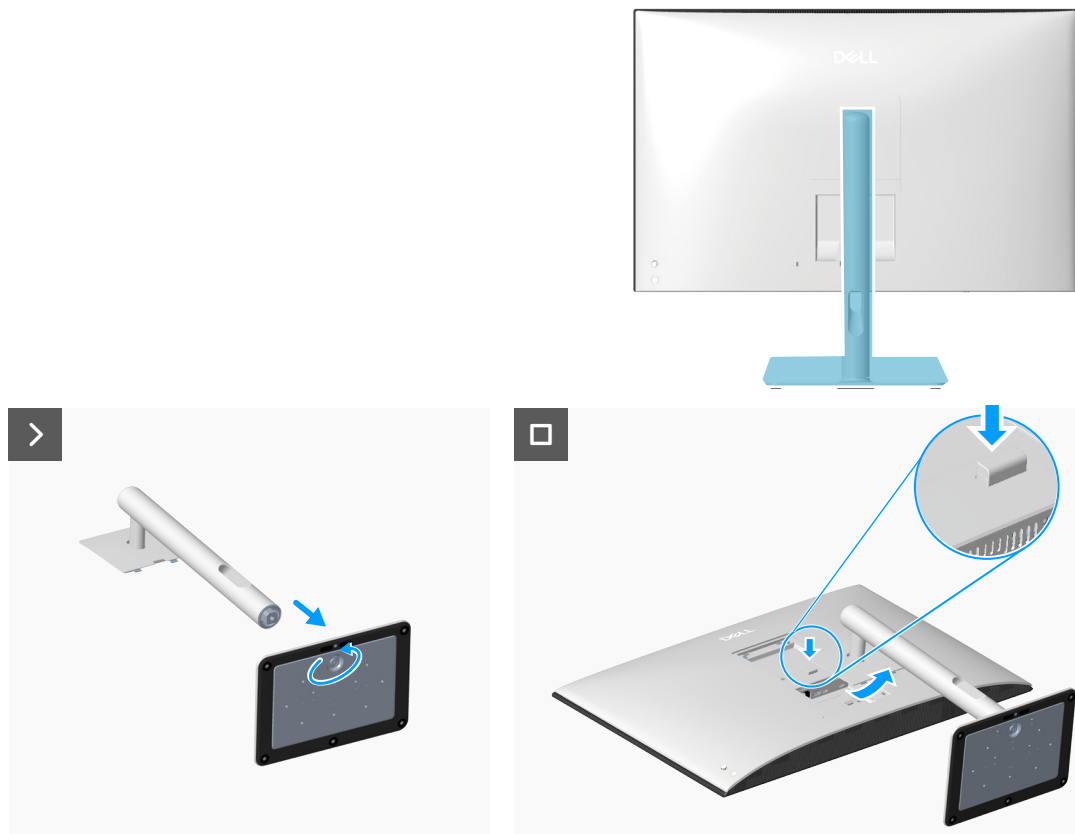
### Installing the stand

#### Prerequisites

If you are replacing a component, remove the existing component before performing the installation procedure.

### About this task

The following image indicates the location of the stand and provides a visual representation of the installation procedure.



**Figure 2.** Installing the stand

### Steps

1. Align and insert the stand riser into the stand base until it snaps into place.
2. Open the screw handle at the bottom of the stand base and turn it clockwise to secure the stand assembly.
3. Close the screw handle.
4. Align the stand-riser bracket with the grooves at the back of the monitor.
5. Slide and gently press the stand assembly until it snaps into place.

### Next steps

1. Follow the procedure in [After working inside your monitor.](#)

## Back cover

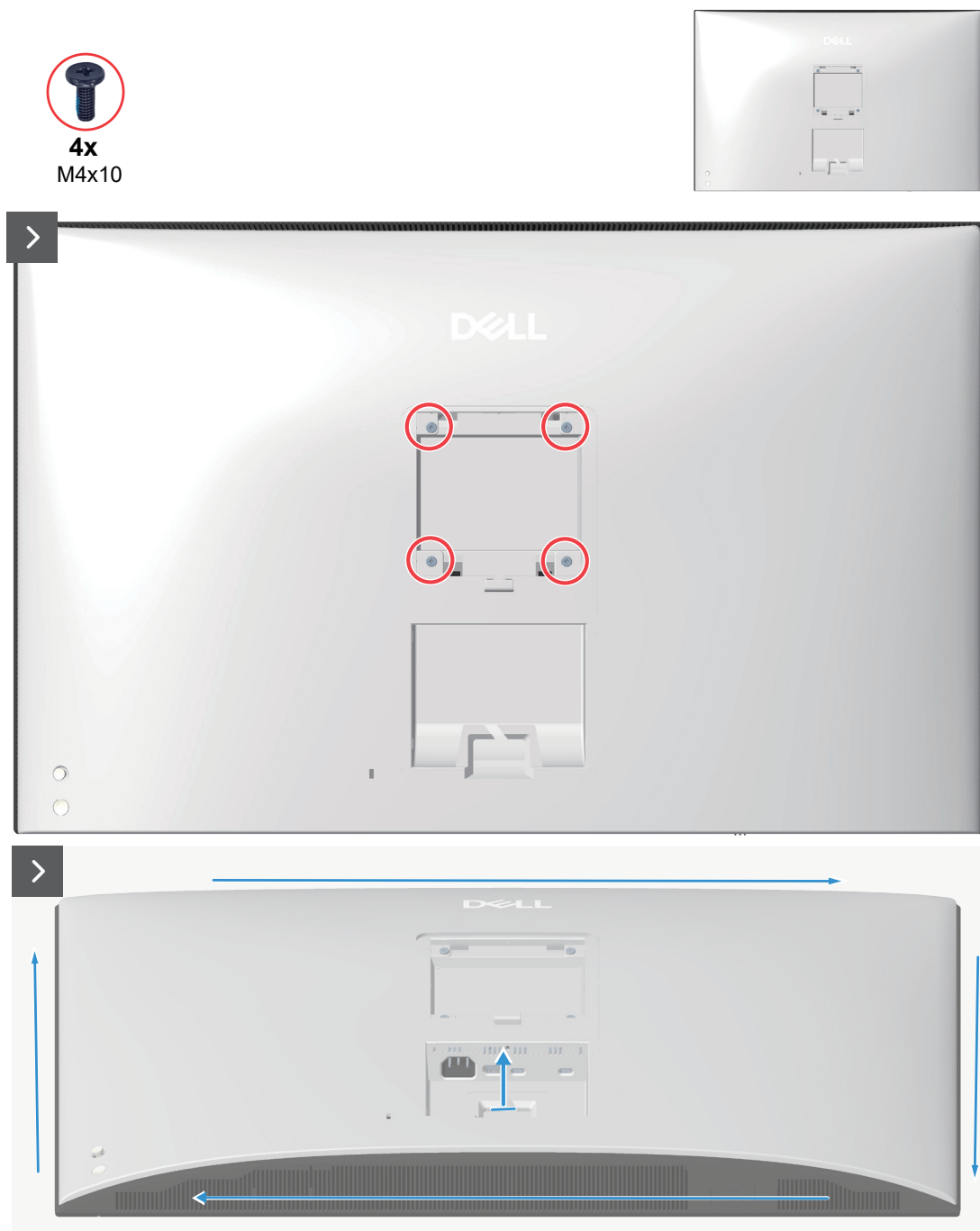
### Removing the back cover

#### Prerequisites

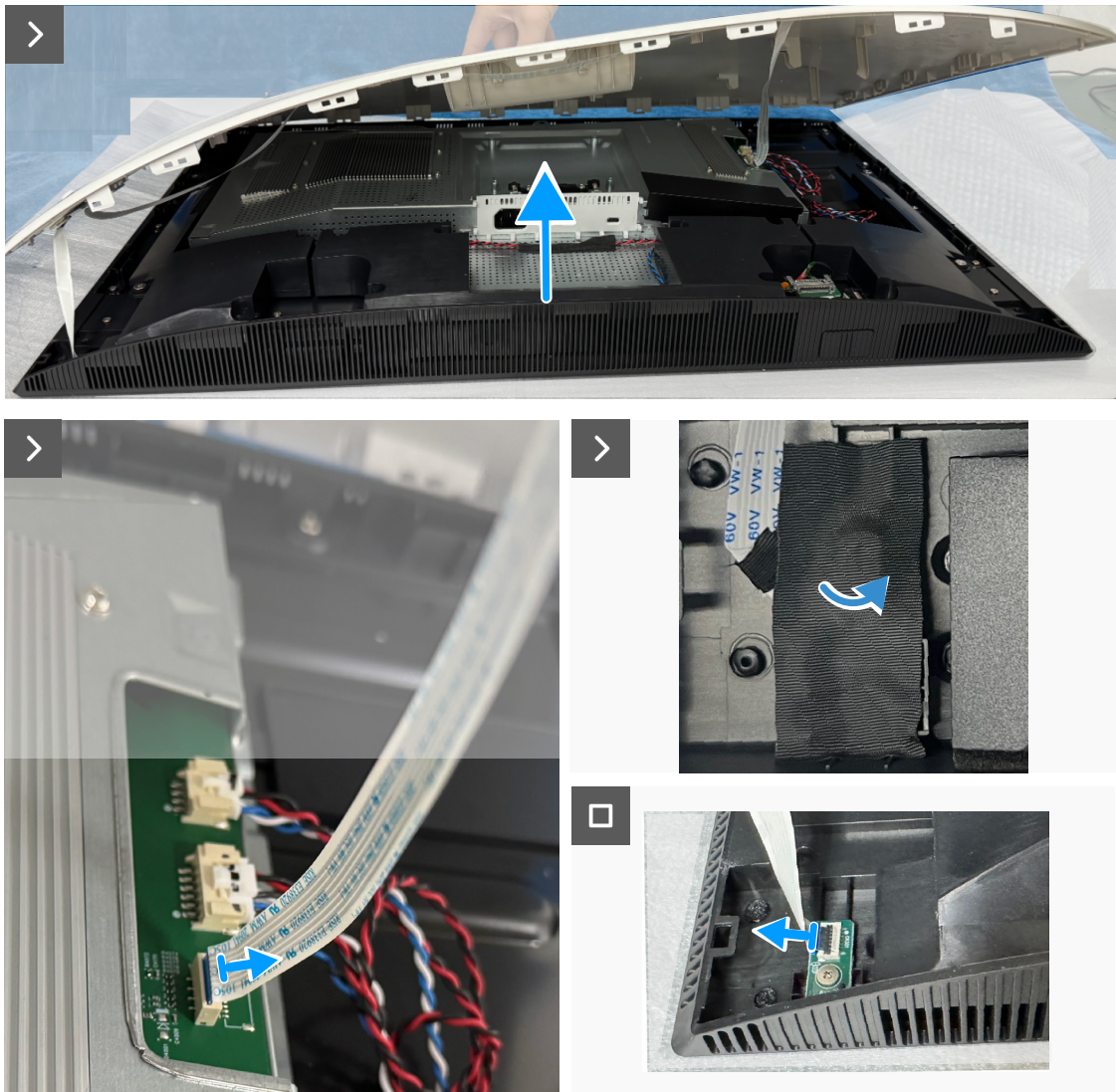
1. Follow the procedure in [Before working inside your monitor.](#)
2. Remove the [stand.](#)

#### About the task

The following image indicates the location of the back cover and provides a visual representation of the removal



**Figure 3.** Removing the screws and prying the back cover



**Figure 4. Disconnecting the keypad board and LED board cable**

### Steps

1. Remove the four screws (M4x10) that secure the back cover to the chassis.
2. Using a plastic scribe, pry the back cover starting from the bottom edge of the monitor.
3. Lift the back cover from the right, and disconnect the keypad board cable from the connector on the system board.
4. Peel the tape and disconnect the LED board cable from the keyboard board.

## Installing the back cover

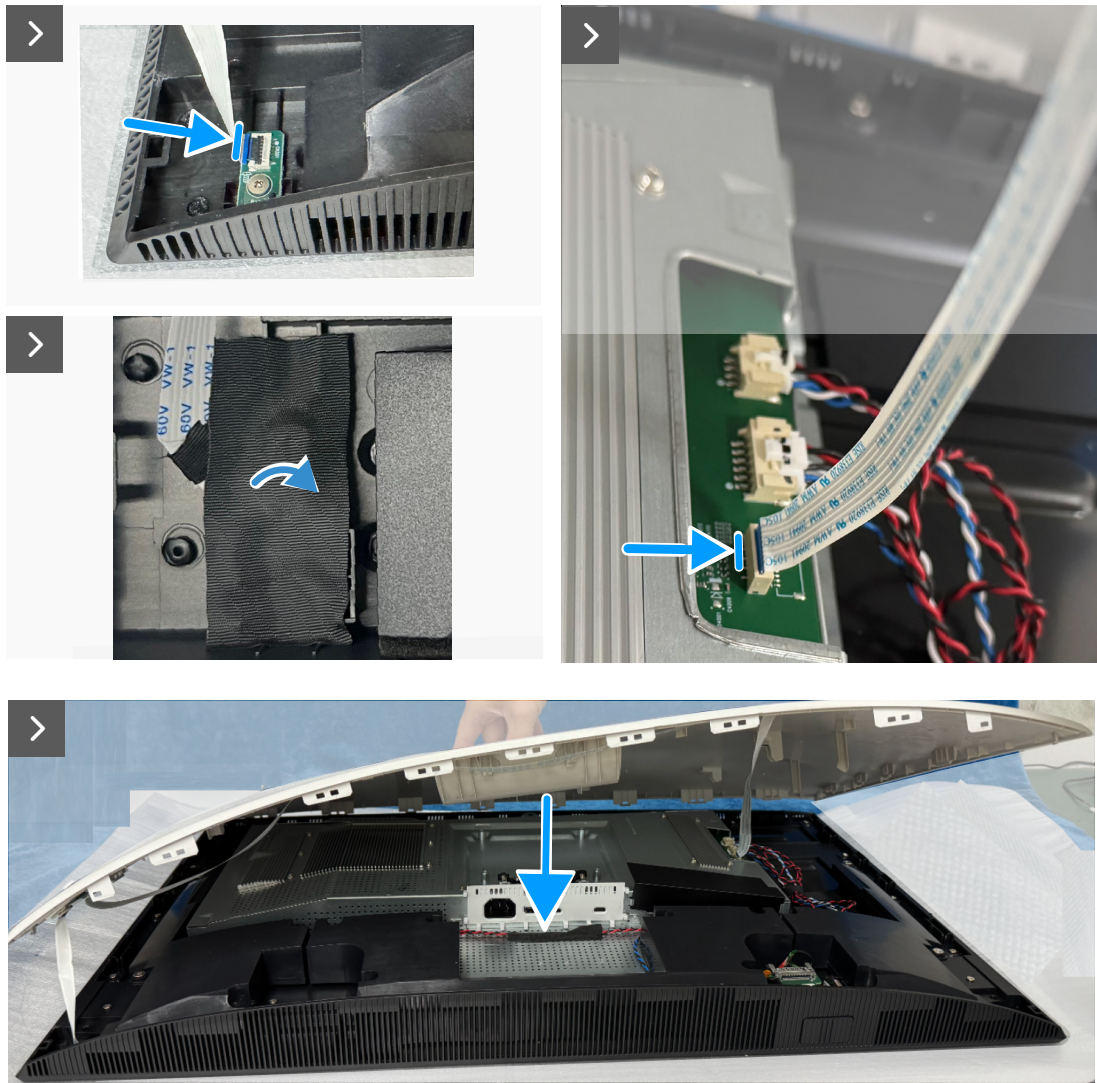
### Prerequisites

If you are replacing a component, remove the existing component before performing the installation procedure.

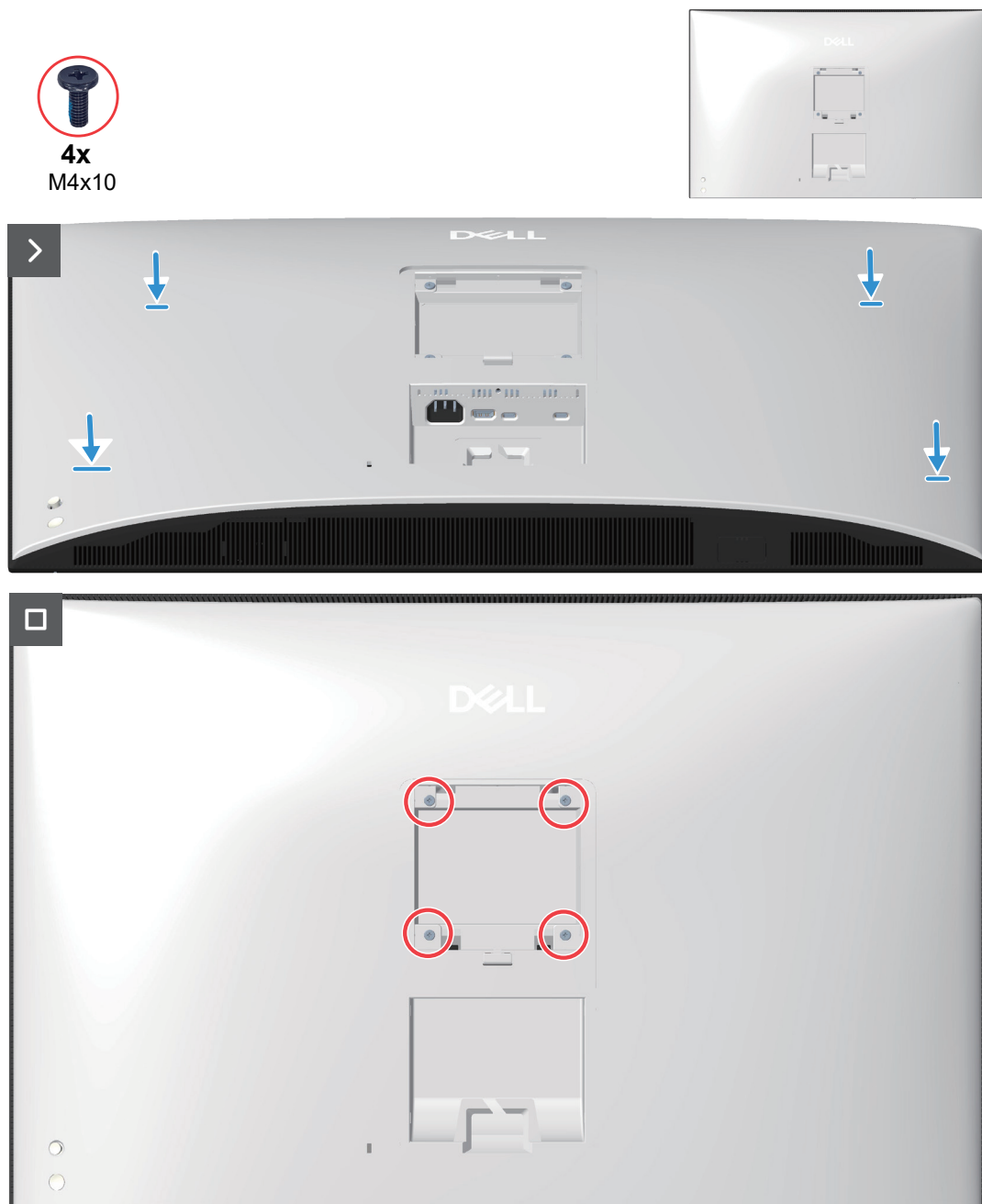
### About this task

The following image indicates the location of the back cover and provides a visual representation of the installation procedure.





**Figure 5.** Connecting the keypad board and LED board cable



**Figure 6. Replacing the screws**

#### Steps

1. Connect the keypad board cable to the connector on the system board.
2. Connect the LED cable to the keypad board and adhere the tape.
3. Align the screw holes on the back cover with the screw holes on the monitor, and gently press along the sides to snap the back cover into place.
4. Replace the four screws (M4x10) to secure the back cover to the chassis.

#### Next steps

1. Install the [stand](#).
2. Follow the procedure in [After working inside your monitor](#).

## Speaker

### Removing the speaker

#### Prerequisites

1. Follow the procedure in [Before working inside your monitor.](#)
2. Remove the [stand.](#)
3. Remove the [back cover.](#)

#### About the task

The following image indicates the location of the speaker and provides a visual representation of the removal procedure.

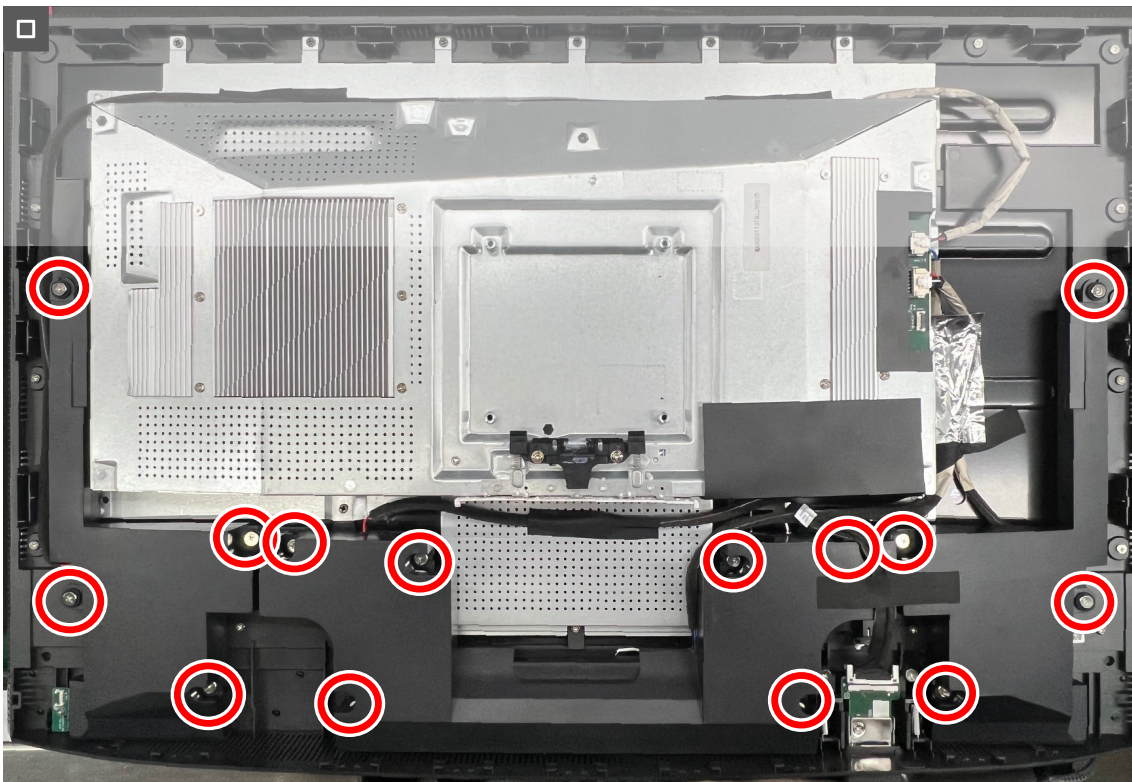
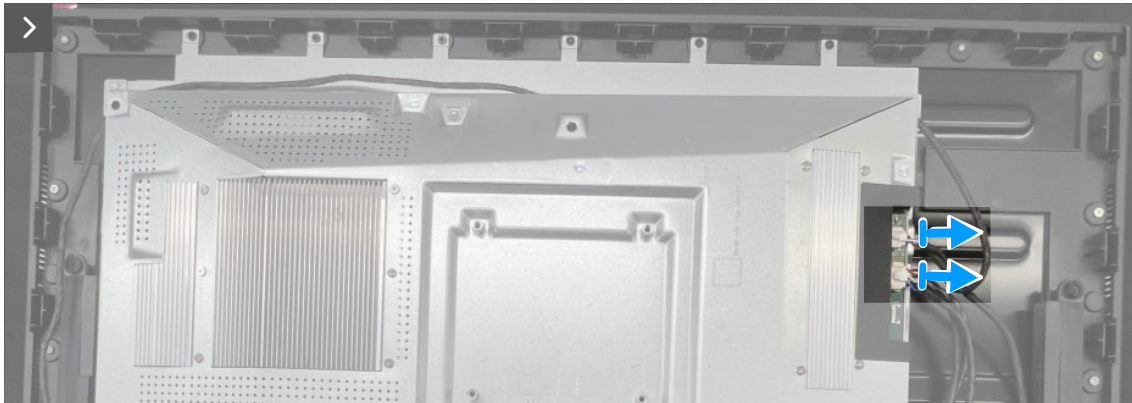


**Figure 7.** Peeling the tapes to secure the cables and Mylar





**14x**  
**Q3x5**



**Figure 8. Disconnecting the speaker cables and removing the screws**

#### Steps

1. Peel back the tapes and Mylar that secure the cables and metal shield to the display panel.
2. Disconnect the speaker cable from the connector on the system board.
3. Remove the fourteen screws (Q3x5) that secure the speakers to the middle frame.
4. Lift the speakers away from the monitor.

## Installing the speaker

### Prerequisites

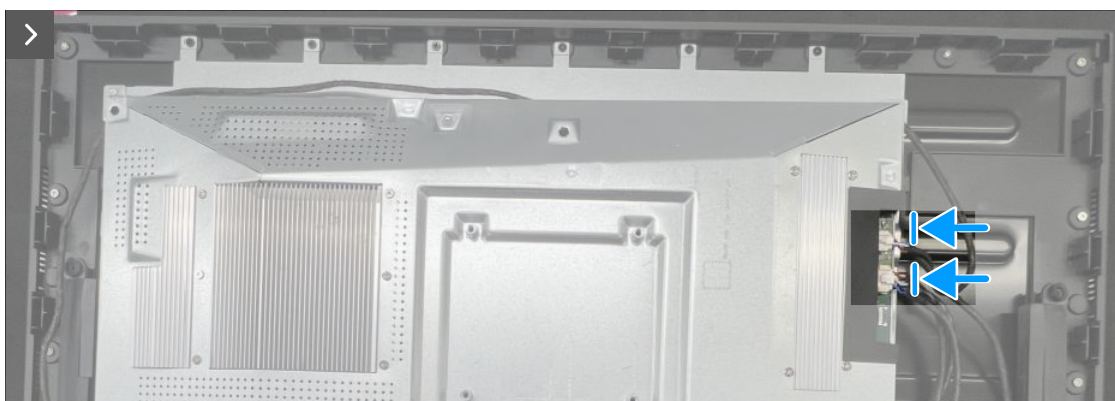
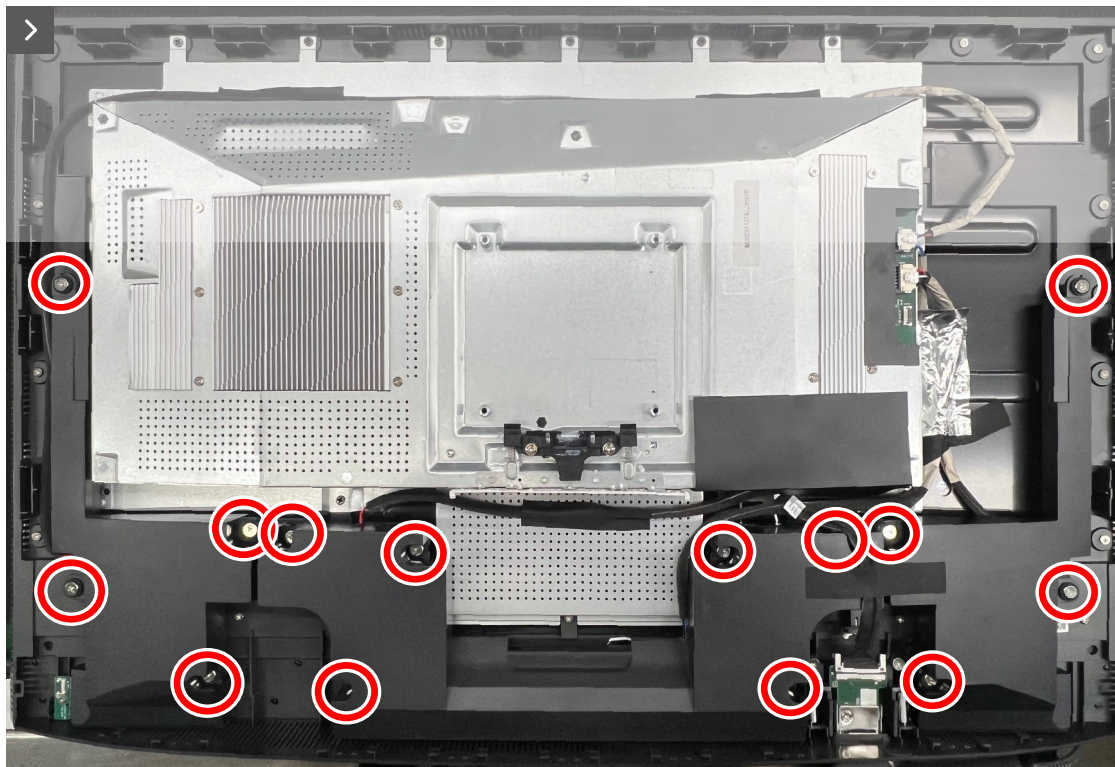
If you are replacing a component, remove the existing component before performing the installation procedure.

### About this task

The following image indicates the location of the speaker and provides a visual representation of the installation procedure.

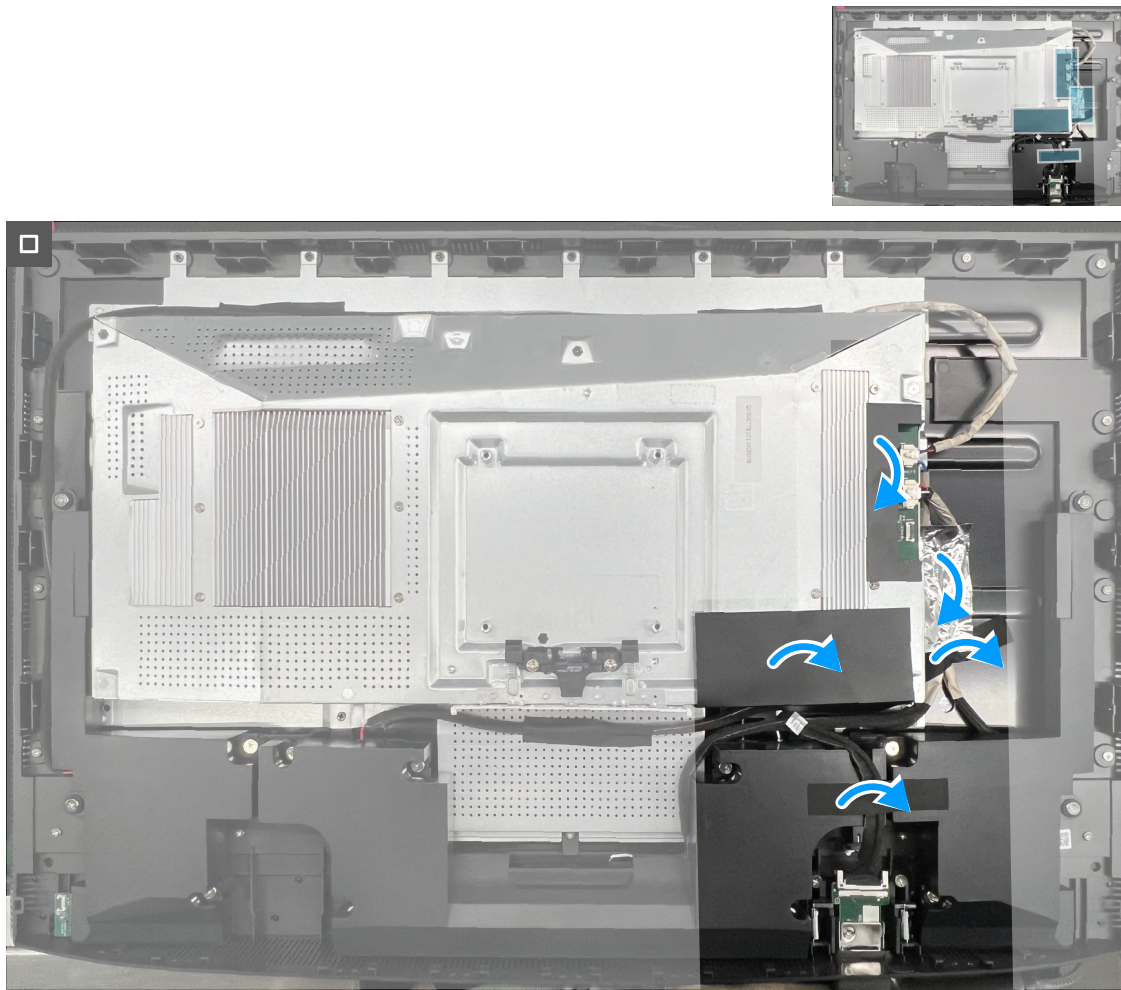


**14x**  
**Q3x5**



**Figure 9.** Installing the screws and connect the speaker cables





**Figure 10.** Adhere the tapes and Mylar to secure the cables and metal shield

#### Steps

1. Align and place the speakers in the slots on the chassis.
2. Connect the speaker cable to the connector on the system board.
3. Align the screw holes on the speakers with the screw holes on the middle frame.
4. Replace the fourteen screws (Q3x5) to secure the speakers to the middle frame.
5. Adhere the tapes to secure the cables and metal shield to the display panel.

#### Next steps

1. Install the [back cover](#).
2. Install the [stand](#).
3. Follow the procedure in [After working inside your monitor](#).

## Metal shield

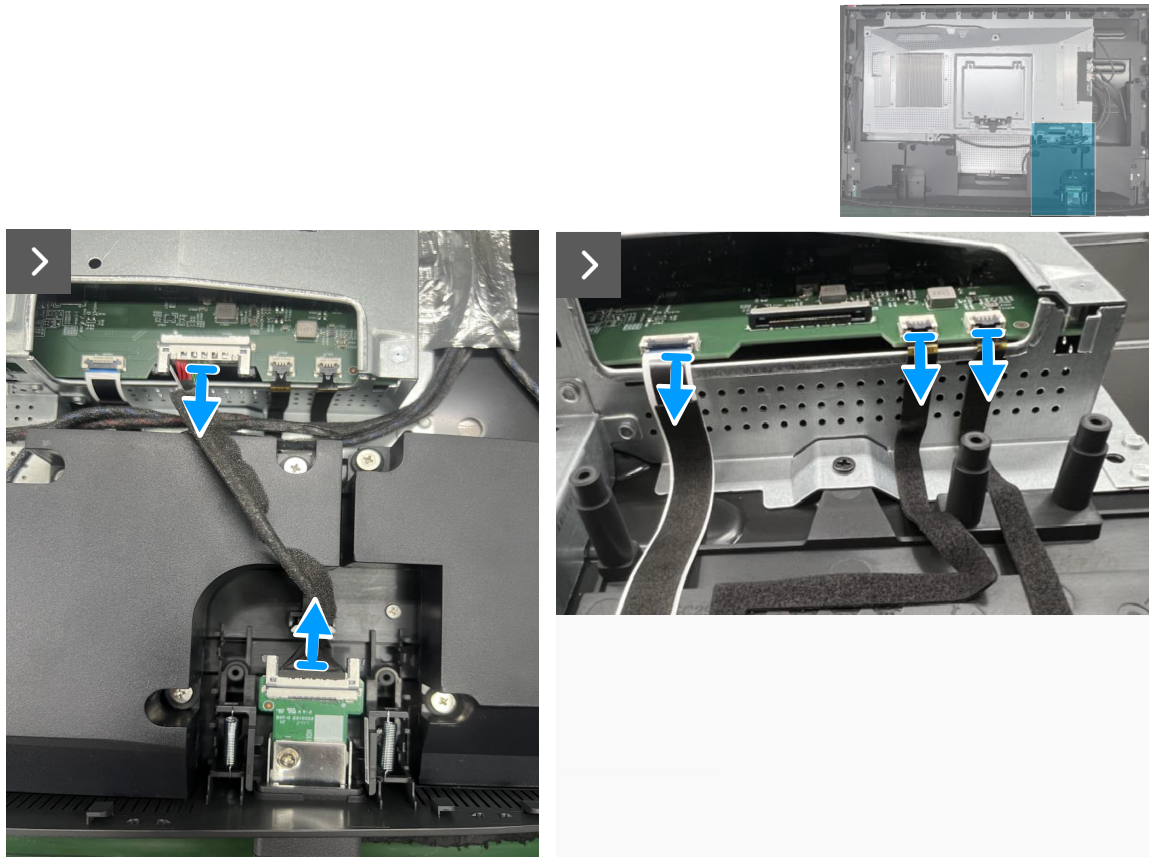
### Removing the metal shield

#### Prerequisites

1. Follow the procedure in [Before working inside your monitor.](#)
2. Remove the [stand.](#)
3. Remove the [back cover.](#)
4. Remove the [speaker.](#)

#### About the task

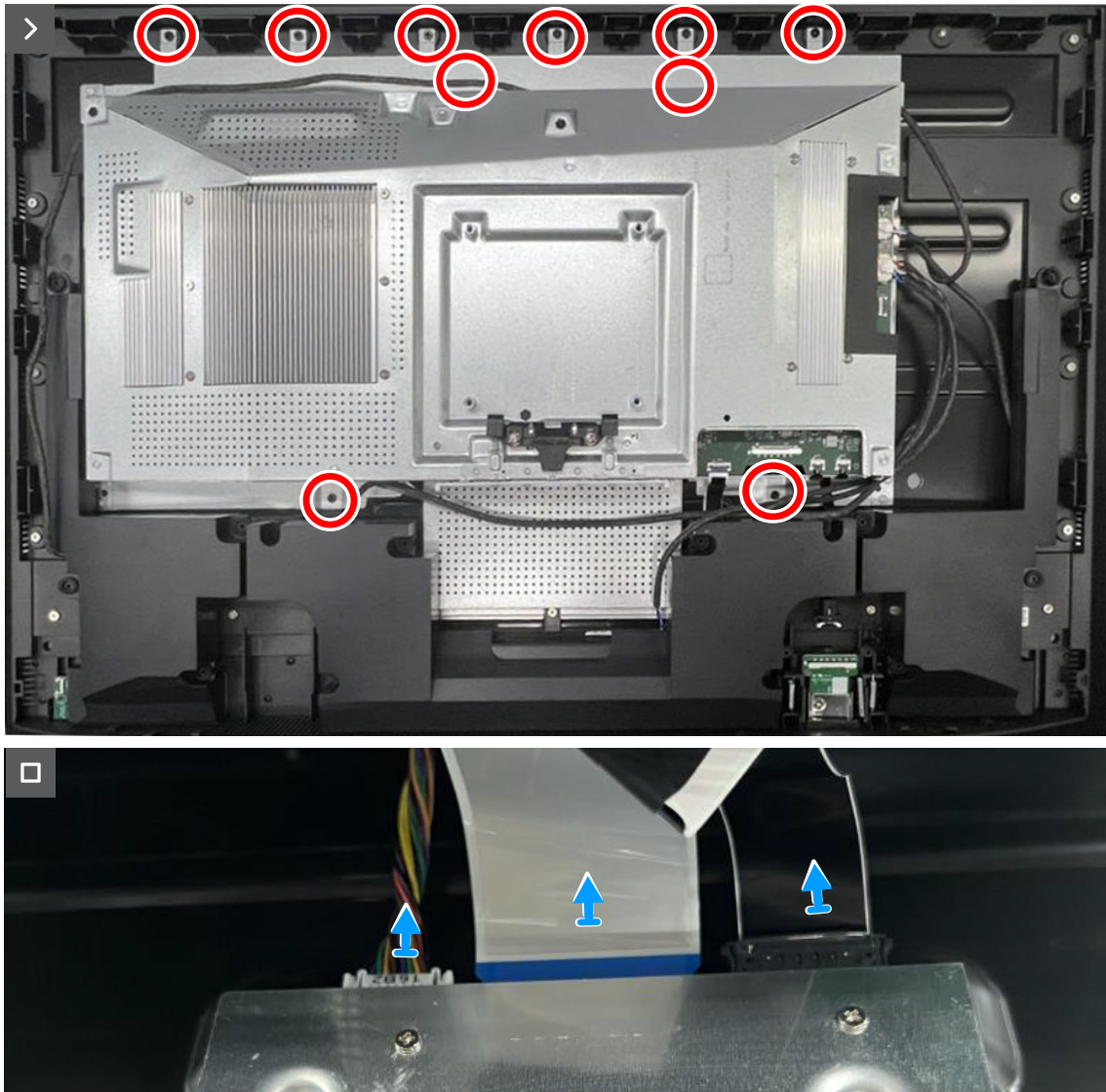
The following image indicates the location of the metal shield and provides a visual representation of the removal procedure.



**Figure 11.** Disconnecting the USB cable and IR cables



**10x**  
P3x5



**Figure 12.** Removing the screws and disconnecting the display cables

#### Steps

1. Disconnect the system board cable, the USB board cable, the webcam module cable, and IR cable from the connectors on the system board and the display panel.
2. Remove the ten screws (P3x5) that secure the metal shield to the middle frame.
3. Lift the metal shield partially and disconnect the display cables from the connector on the display panel.



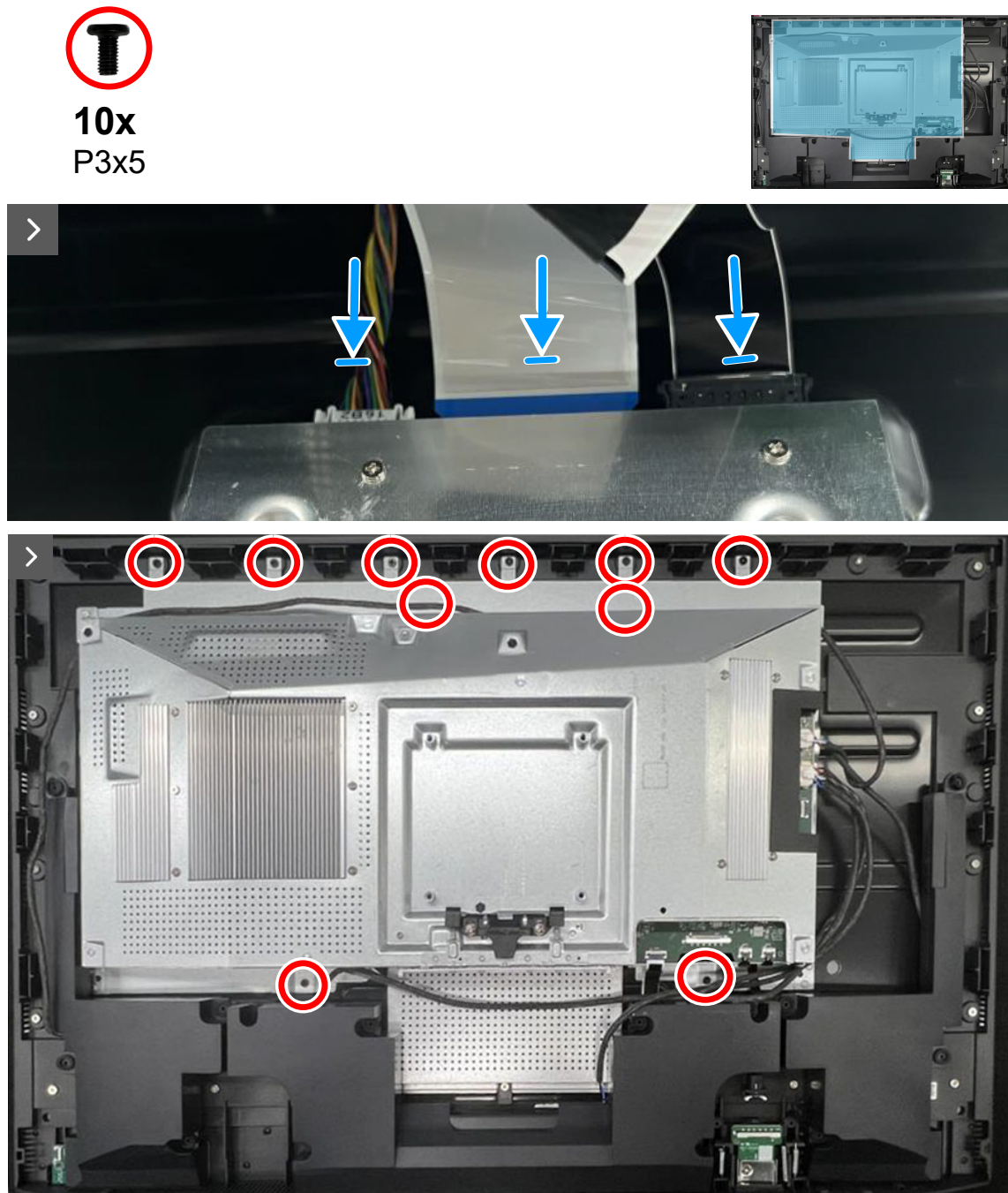
## Installing the metal shield

### Prerequisites

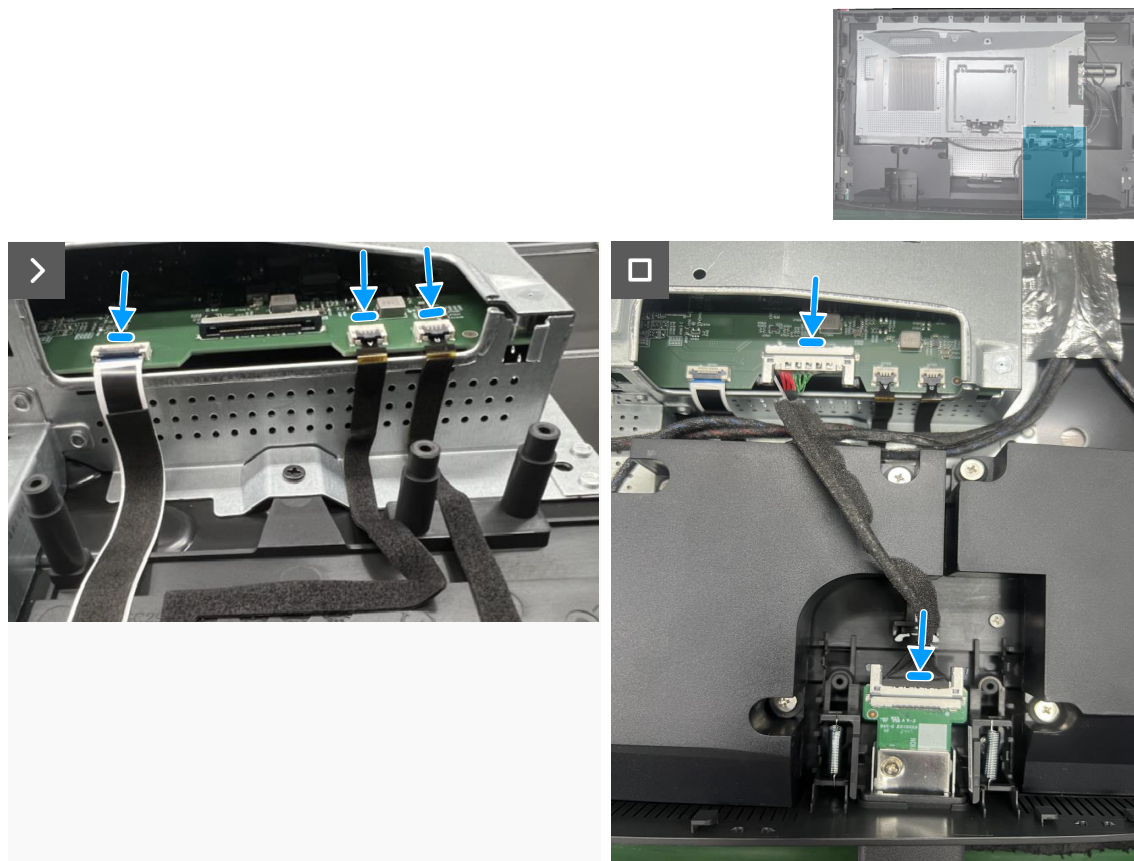
If you are replacing a component, remove the existing component before performing the installation procedure.

### About this task

The following image indicates the location of the metal shield and provides a visual representation of the installation procedure.



**Figure 13.** Connecting the display cables and replacing the screws



**Figure 14. Connecting the USB cables and IR cables**

### Steps

1. Connect the display cables to the connectors on the display panel.
2. Align the screw holes of the metal shield to the screw holes on the display panel.
3. Replace the ten screws (P3x5) to secure the metal shield to the display panel.
4. Connect the system board cable, the USB board cable, the webcam module cable, and IR cable to the connectors on the system board and the display panel.

### Next steps

1. Install the [speaker](#).
2. Install the [back cover](#).
3. Install the [stand](#).
4. Follow the procedure in [After working inside your monitor](#).

## System board, power board, and fan

### Removing the system board, power board, and fan

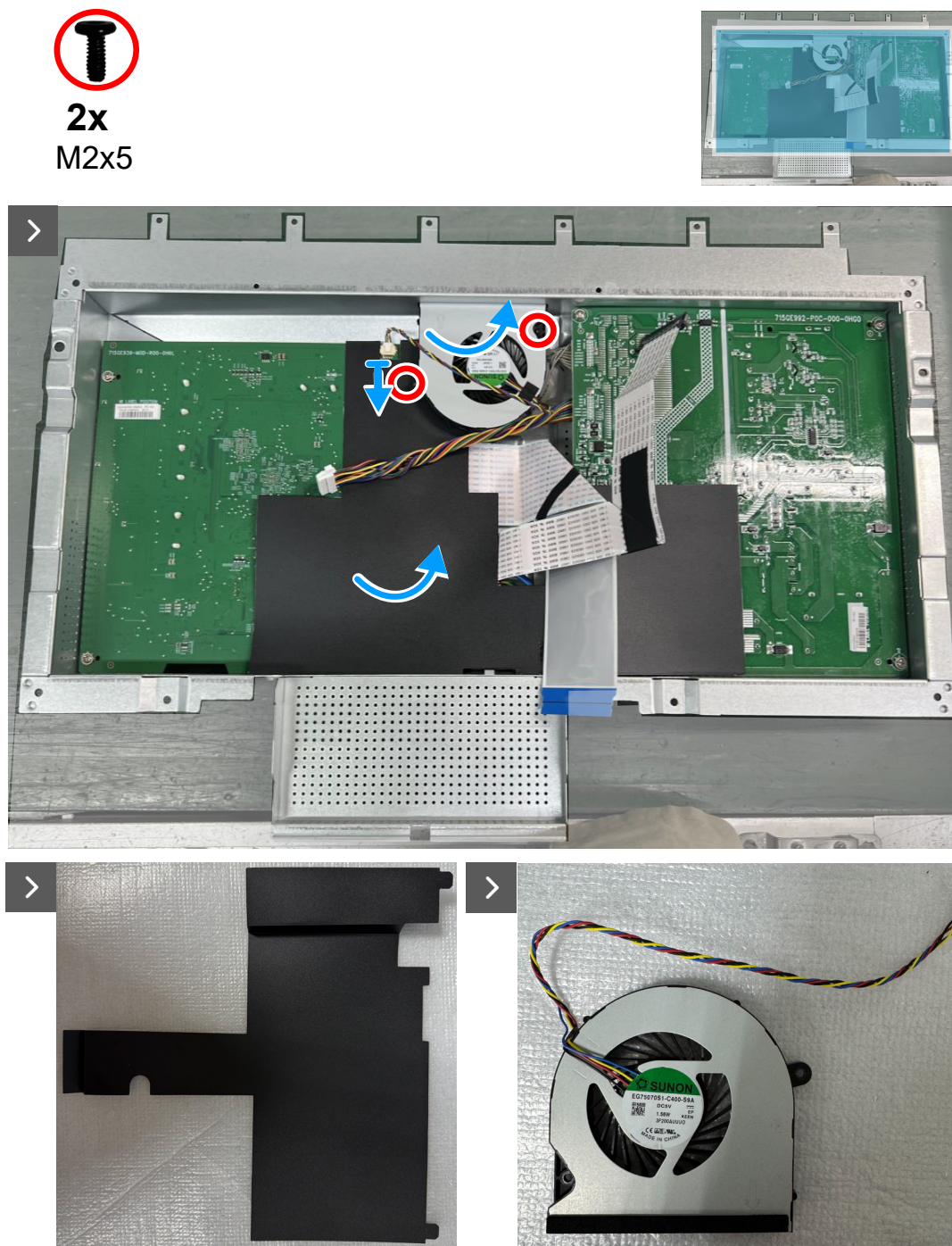
#### Prerequisites

1. Follow the procedure in [Before working inside your monitor](#).
2. Remove the [stand](#).
3. Remove the [back cover](#).
4. Remove the [speaker](#).
5. Remove the [metal shield](#).

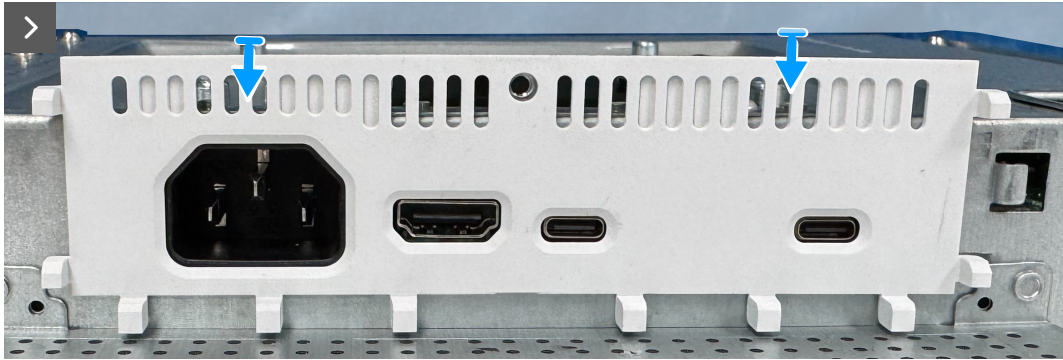


### About the task

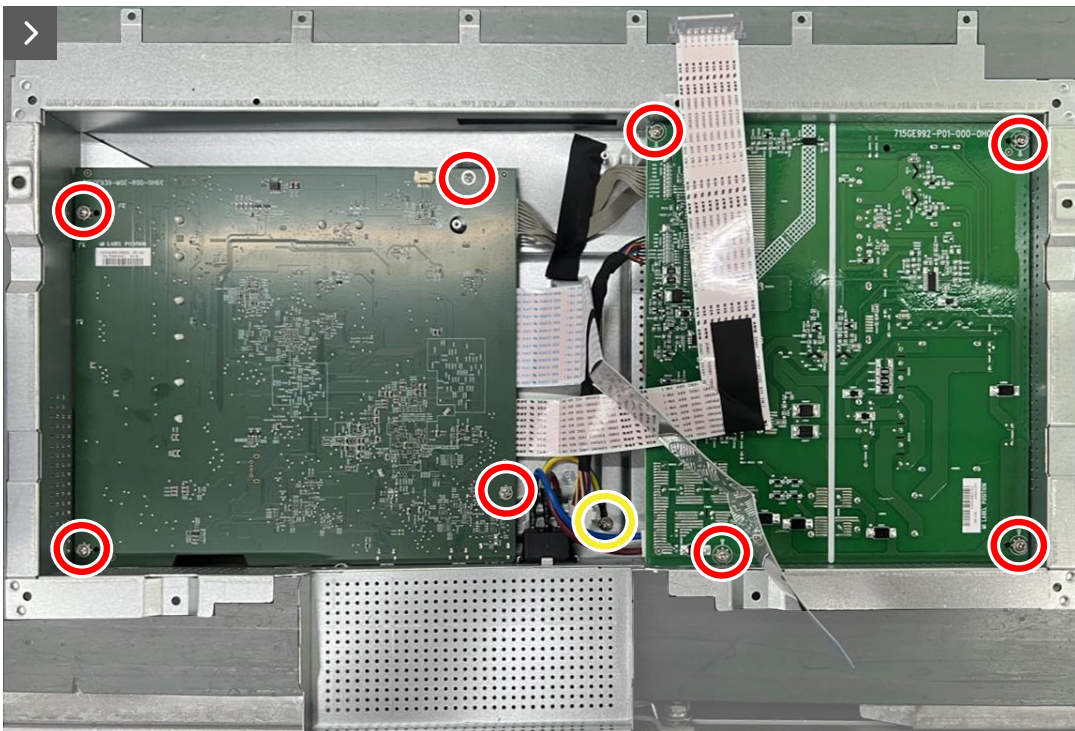
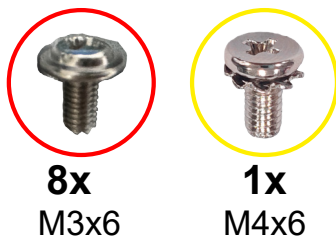
The following image indicates the location of the system board, power board, the fan and provides a visual representation of the removal procedure.



**Figure 15.** Removing the fan and the Mylar

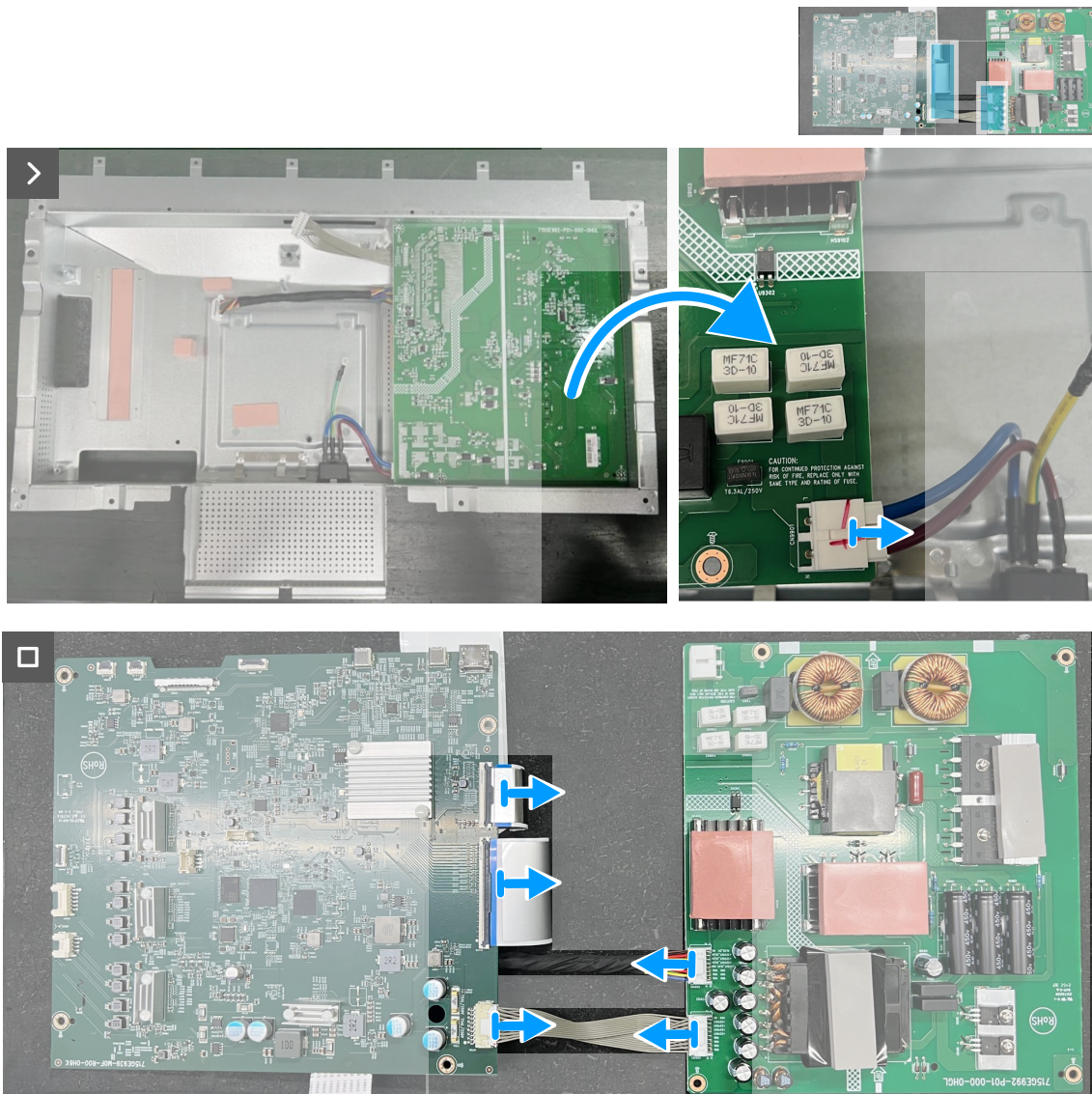


**Figure 16.** Removing the metal shield I/O-cover



**Figure 17.** Removing the screws





**Figure 18. Disconnecting the cables**

### Steps

1. Remove the two screws (M2x5) that secure the fan to the metal shield.
2. Disconnect the cable to remove the fan and then remove the Mylar sheet from the system board and power board.
3. Remove the metal shield I/O-cover from the metal shield.
4. Remove the eight screws (M3x6) and the screw (M4x6) that secure the system board and power board to the metal shield.
5. Disconnect the cables from the connectors on the system board and power board.

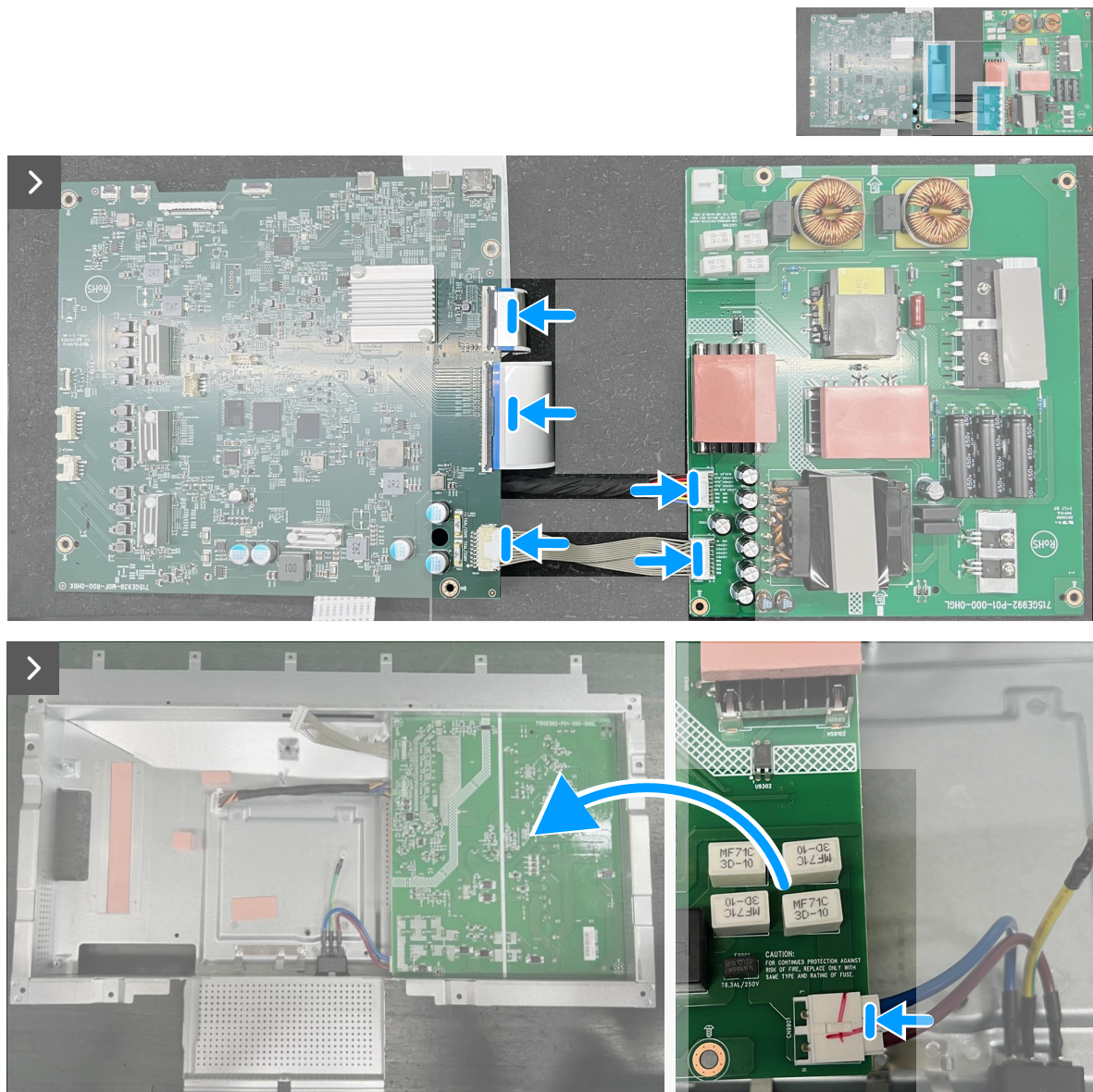
## Installing the system board, power board, and fan

### Prerequisites

If you are replacing a component, remove the existing component before performing the installation procedure.

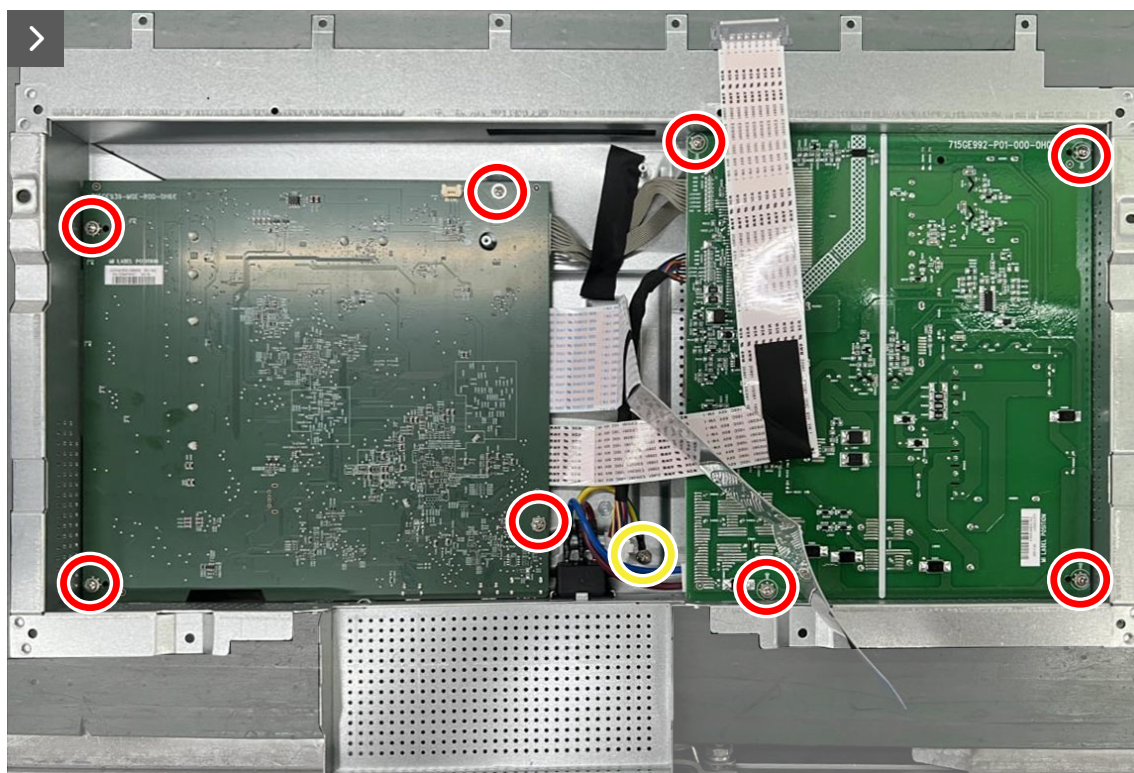
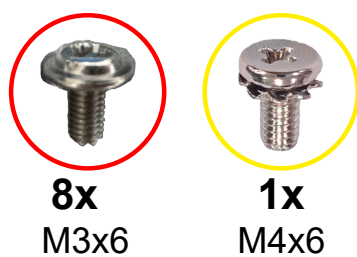
### About this task

The following image indicates the location of the system board, power board, the fan and provides a visual representation of the installation procedure.



**Figure 19. Connecting the cables**





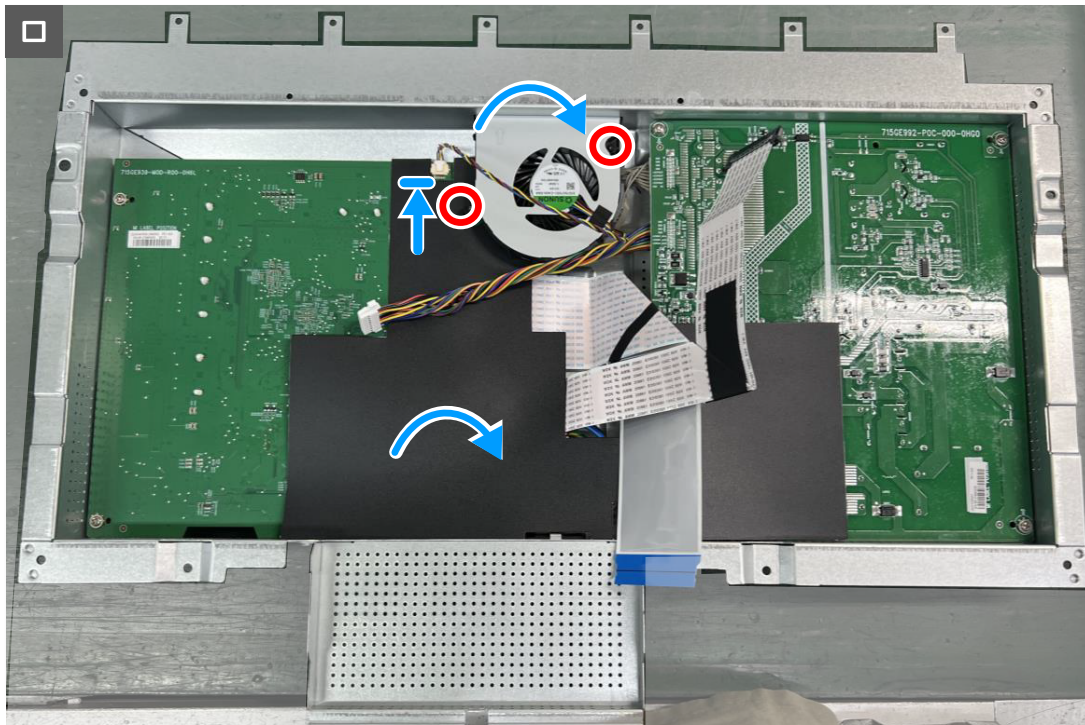
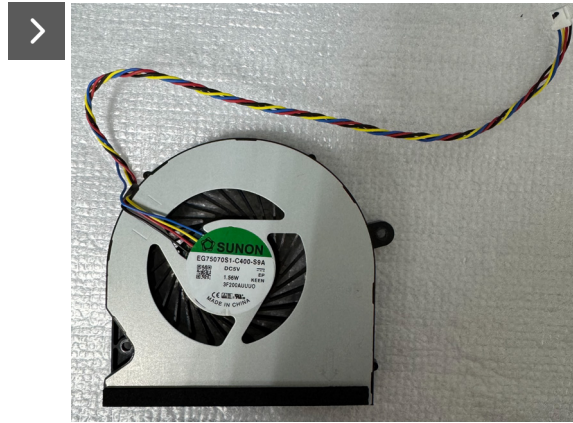
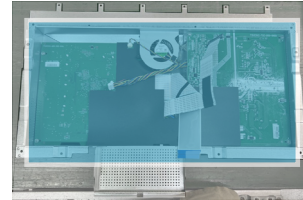
**Figure 20.** Replacing the screws



**Figure 21.** Replacing the metal shield I/O-cover



**2x**  
**M2x5**



**Figure 22. Installing the Mylar and the fan**

#### Steps

1. Connect the cables to the connectors on the system board, power board, and the fan.
2. Replace the eight screws (M3x6) and the screw (M4x6) to secure the system board, power board to the metal shield.
3. Replace the metal shield I/O-cover on the metal shield.
4. Replace the two screws (M2x5) to secure the fan to the metal shield, connecting the pin.
5. Place the Mylar sheet on the system board and the power board.

#### Next steps

1. Install the [metal shield](#).
2. Install the [speaker](#).
3. Install the [back cover](#).



4. Install the [stand](#).
5. Follow the procedure in [After working inside your monitor](#).

## Middle frame

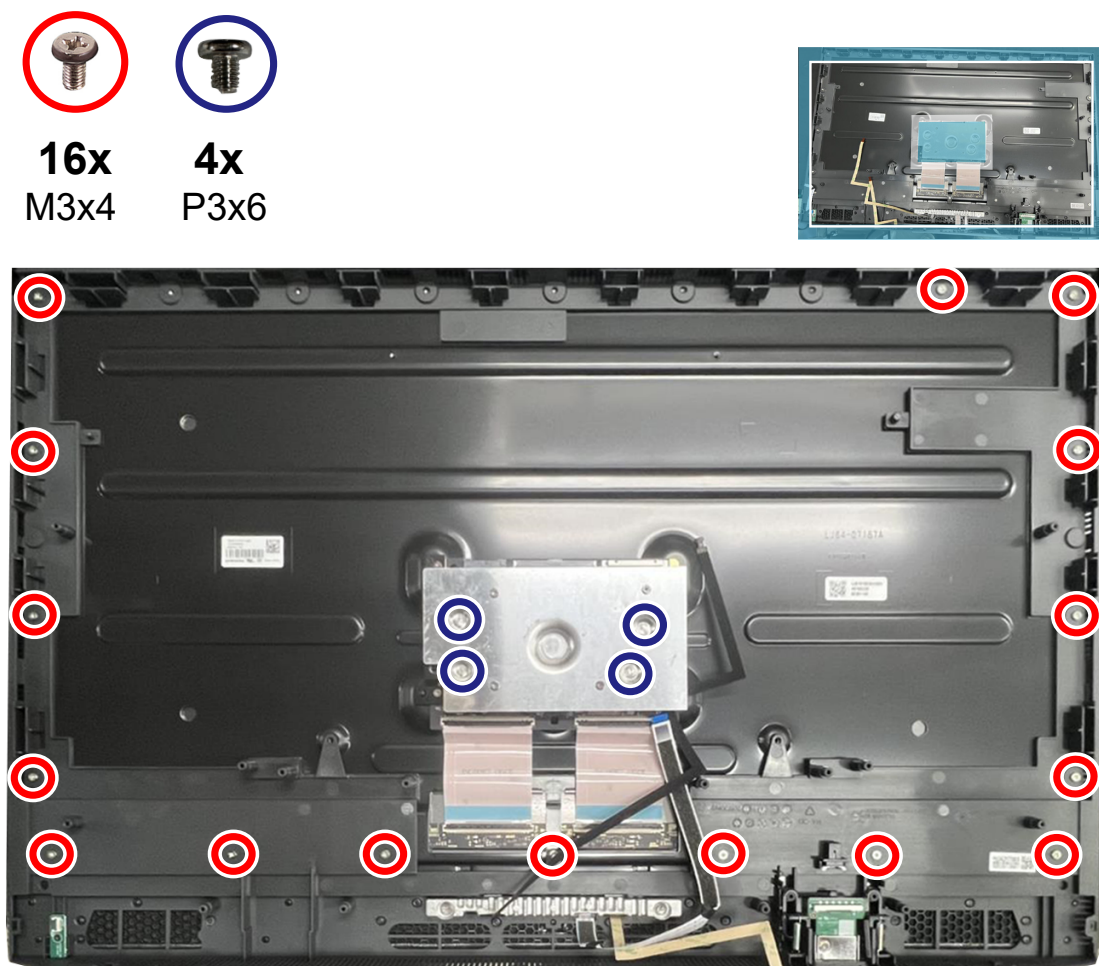
### Removing the middle frame

#### Prerequisites

1. Follow the procedure in [Before working inside your monitor](#).
2. Remove the [stand](#).
3. Remove the [back cover](#).
4. Remove the [speaker](#).
5. Remove the [metal shield](#).

#### About the task

The following image indicates the location of the middle frame and provides a visual representation of the removal procedure.



**Figure 23.** Removing the screws

#### Steps

1. Remove the sixteen screws (M3x4) that secure the middle frame to the display panel.
2. Remove the four screws (P3x6) that secure the heat sink to the display panel.
3. Lift and remove the middle frame and heat sink away from the display panel.

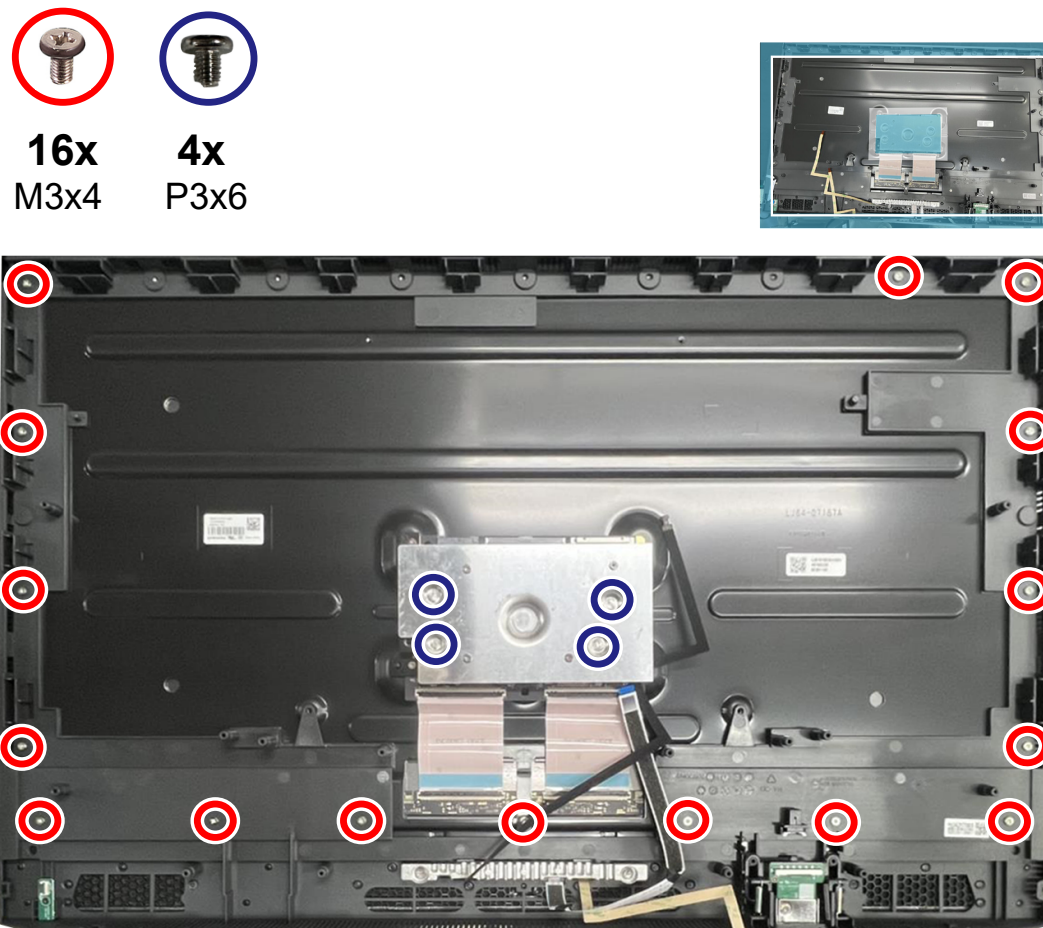
## Installing the middle frame

### Prerequisites

If you are replacing a component, remove the existing component before performing the installation procedure.

### About this task

The following image indicates the location of the middle frame and provides a visual representation of the installation procedure.



**Figure 24.** Replacing the screws

### Steps

1. Align and place the middle frame on the display panel.
2. Replace the sixteen screws (M3x4) to secure the front trim to the display panel.
3. Place the heat sink and replace the four screws (P3x6) to secure the heat sink to the display panel.

### Next steps

1. Install the [metal shield](#).
2. Install the [speaker](#).
3. Install the [back cover](#).
4. Install the [stand](#).
5. Follow the procedure in [After working inside your monitor](#).

## LED board and webcam module

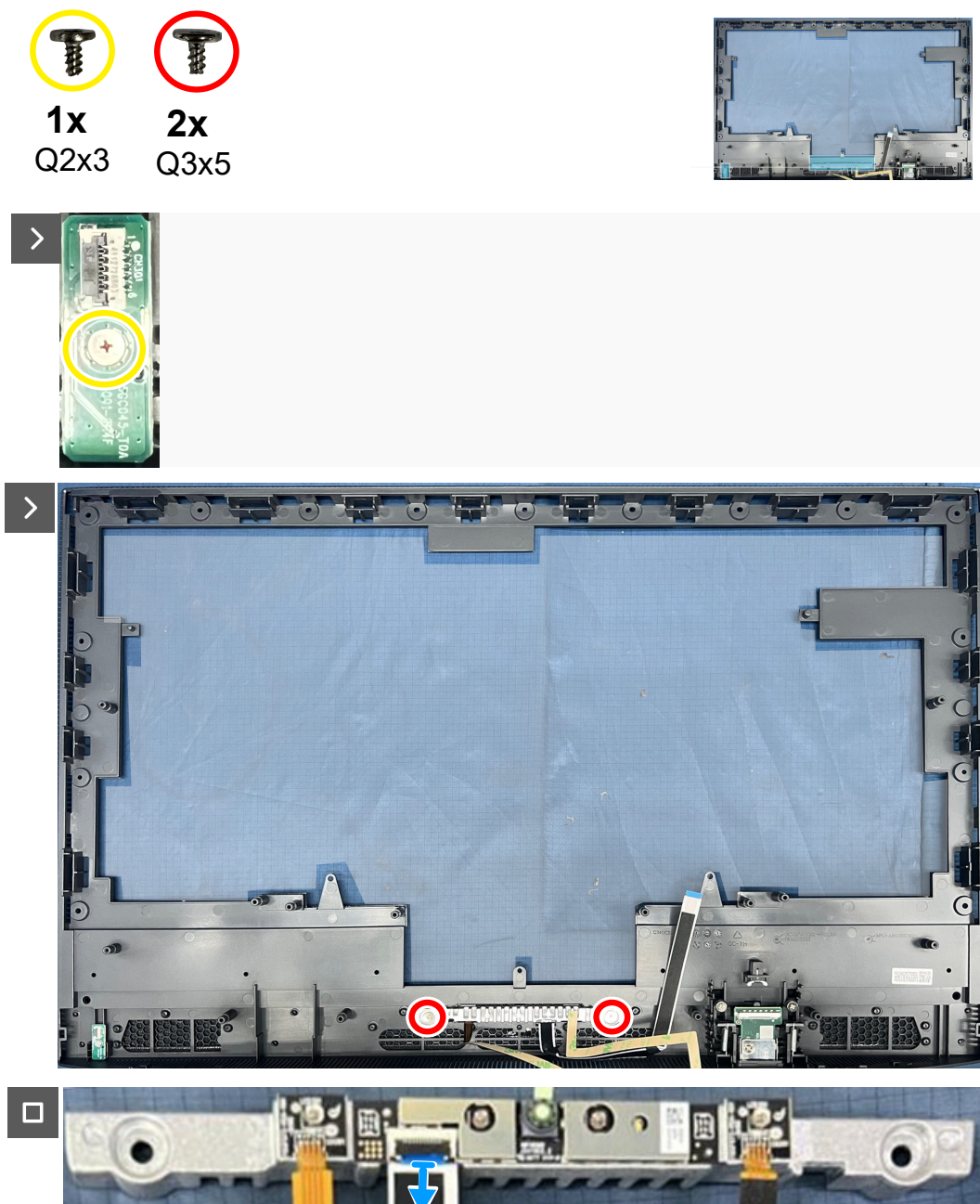
### Removing the LED board and webcam module

#### Prerequisites

1. Follow the procedure in [Before working inside your monitor.](#)
2. Remove the [stand.](#)
3. Remove the [back cover.](#)
4. Remove the [speaker.](#)
5. Remove the [metal shield.](#)
6. Remove the [middle frame.](#)

#### About the task

The following image indicates the location of the LED board and webcam module and provides a visual representation of the removal procedure.



**Figure 25.** Removing the LED board and webcam module



## Steps

1. Remove the screw (Q2x3) that secure the LED board to the middle frame.
2. Remove the two screws (Q3x5) that secure the webcam module to the middle frame.

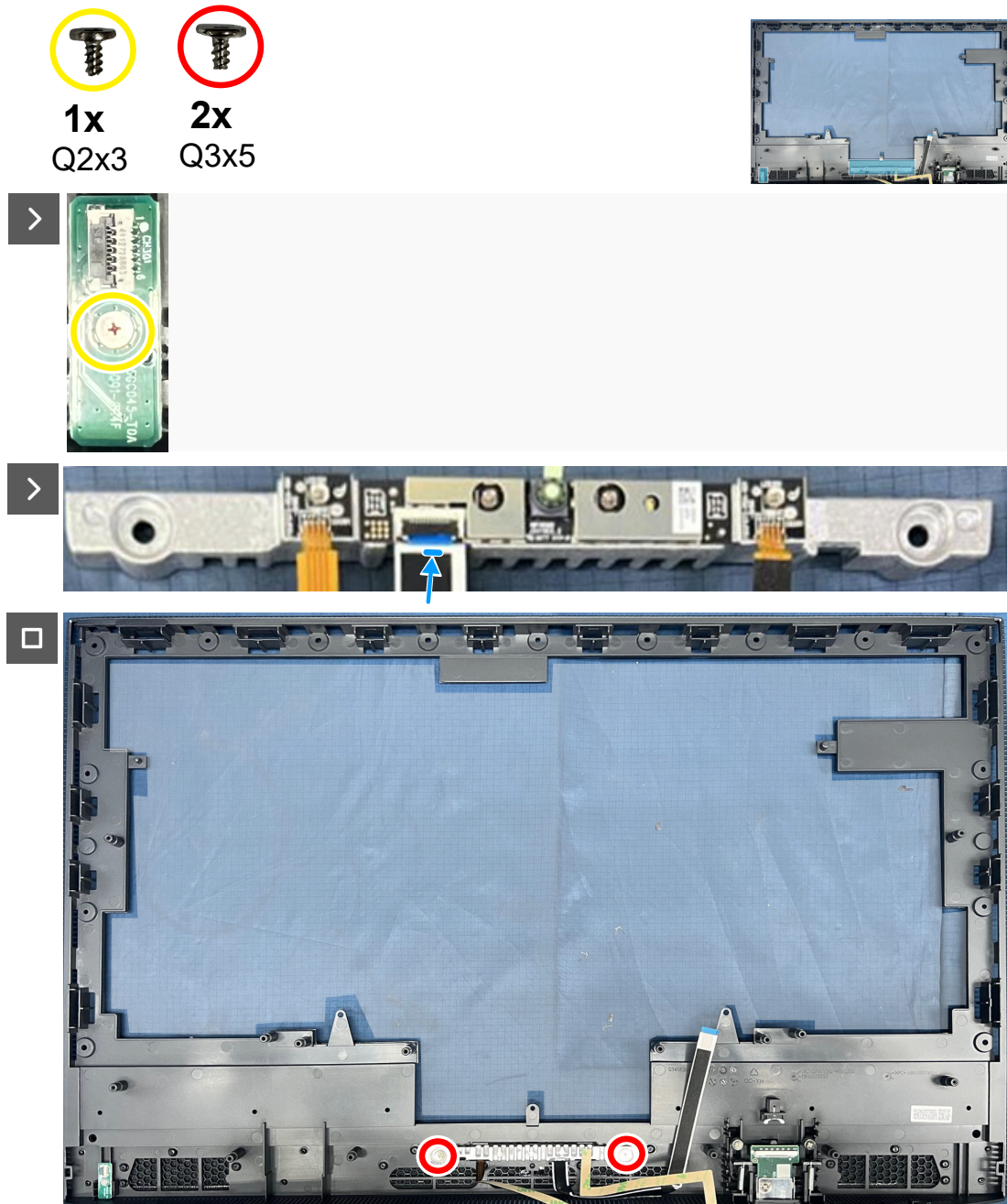
## Installing the LED board and webcam module

### Prerequisites

If you are replacing a component, remove the existing component before performing the installation procedure.

### About this task

The following image indicates the location of the LED board, webcam module and provides a visual representation of the installation procedure.



**Figure 26.** Installing the LED board and webcam Module

## Steps

1. Replace the screw (Q2x3) to secure the LED board to the middle frame.
2. Replace the two screws (Q3x5) to secure the webcam module to the middle frame.

## Next steps

1. Install the [middle frame](#).
2. Install the [metal shield](#).
3. Install the [speaker](#).
4. Install the [back cover](#).
5. Install the [stand](#).
6. Follow the procedure in [After working inside your monitor](#).

## USB board

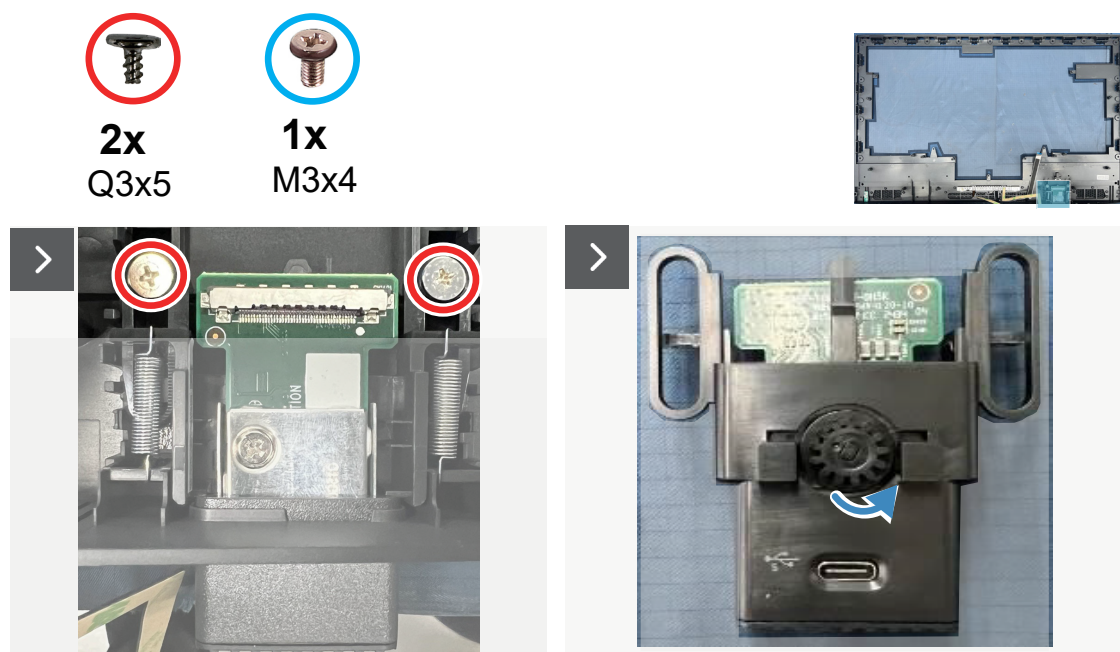
### Removing the USB board

#### Prerequisites

1. Follow the procedure in [Before working inside your monitor](#).
2. Remove the [stand](#).
3. Remove the [back cover](#).
4. Remove the [speaker](#).
5. Remove the [metal shield](#).
6. Remove the [middle frame](#).

#### About the task

The following image indicates the location of the USB board and provides a visual representation of the removal procedure.





**Figure 27. Removing the USB board**

### Steps

1. Remove the two screws (Q3x5) to remove the USB module from the middle frame.
2. Remove the USB front cover and USB rear cover.
3. Remove the screw (M3x4) that secure the USB board to the bracket bottom.

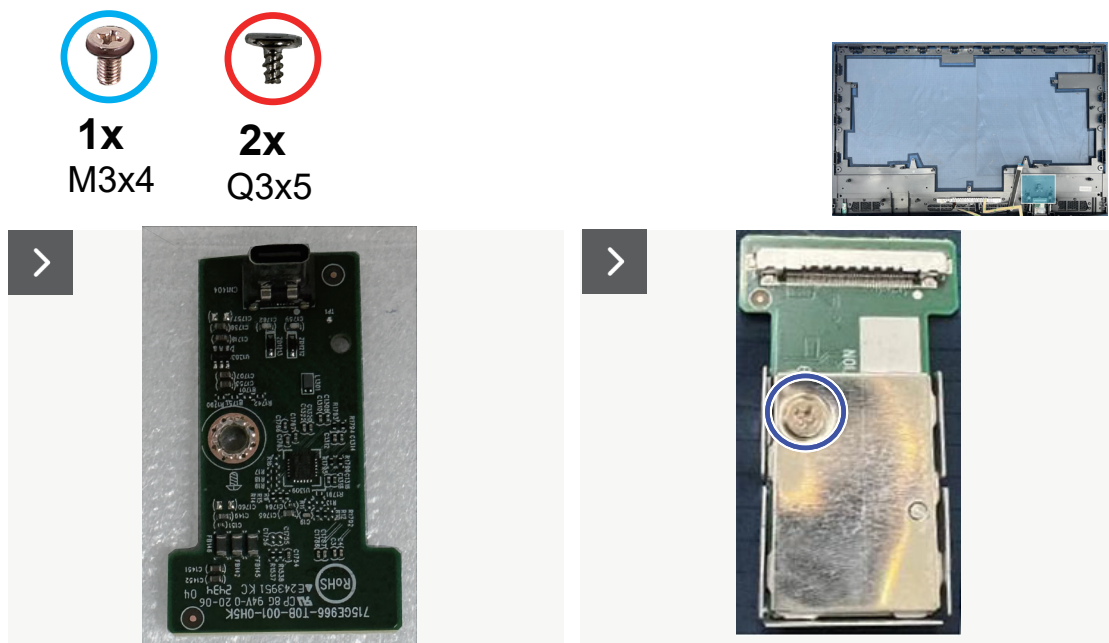
### Installing the USB board

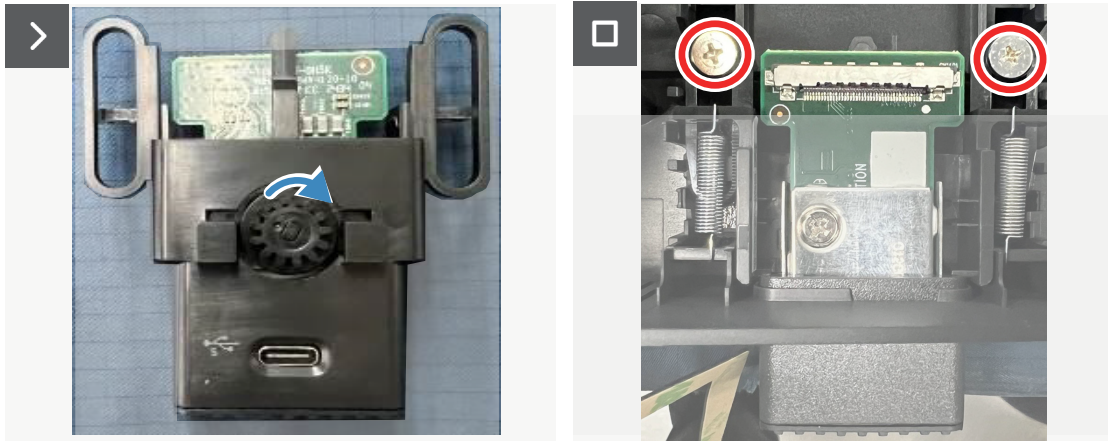
#### Prerequisites

If you are replacing a component, remove the existing component before performing the installation procedure.

#### About this task

The following image indicates the location of the USB board and provides a visual representation of the installation procedure.





**Figure 28.** Installing the USB board

### Steps

1. Replace the screw (M3x4) that secure the USB board to the bracket bottom
2. Replace the USB front cover and USB rear cover.
3. Replace the two screws (Q3x5) that secure the USB board to the middle frame.

### Next steps

1. Install the [middle frame](#).
2. Install the [metal shield](#).
3. Install the [speaker](#).
4. Install the [back cover](#).
5. Install the [stand](#).
6. Follow the procedure in [After working inside your monitor](#).

## Keypad board

### Removing the keypad board

#### Prerequisites

1. Follow the procedure in [Before working inside your monitor](#).
2. Remove the [stand](#).
3. Remove the [back cover](#).

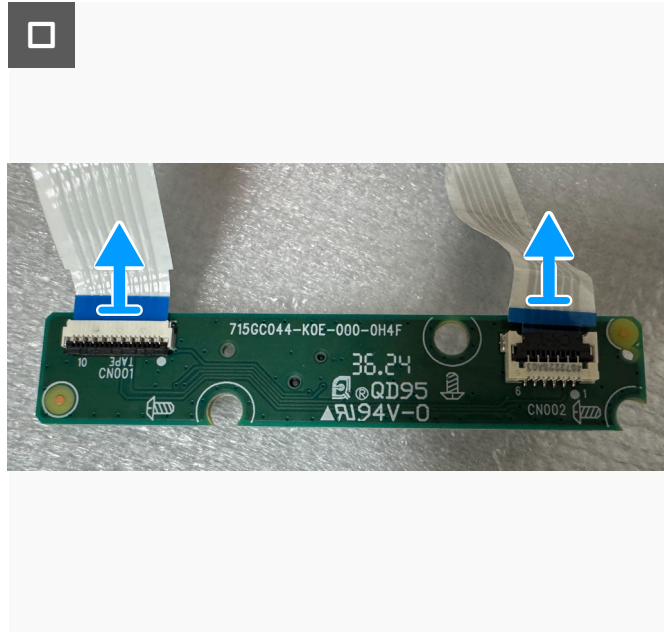
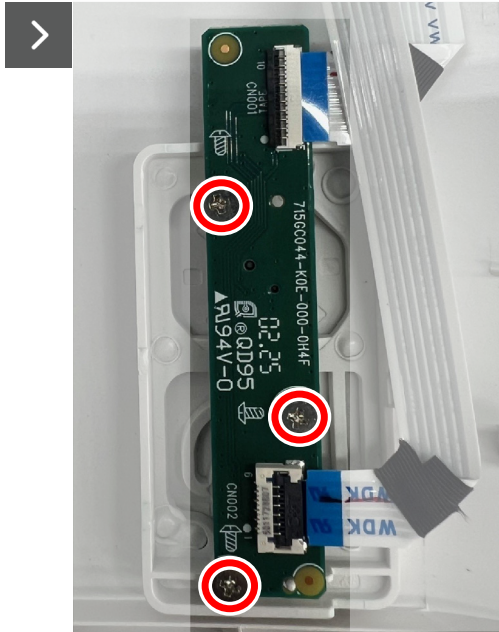
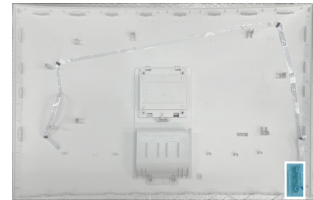
#### About the task

The following image indicates the location of the keypad board and provides a visual representation of the removal procedure.





**3x**  
**Q2x3**



**Figure 29. Removing the keypad board and disconnecting the cables**

### Steps

1. Remove the three screws (Q2X3) that secure the keypad board to the back cover.
2. Lift the keypad board away from the back cover.
3. Disconnect the cables from the connectors on the keypad board.

## Installing the keypad board

### Prerequisites

If you are replacing a component, remove the existing component before performing the installation procedure.

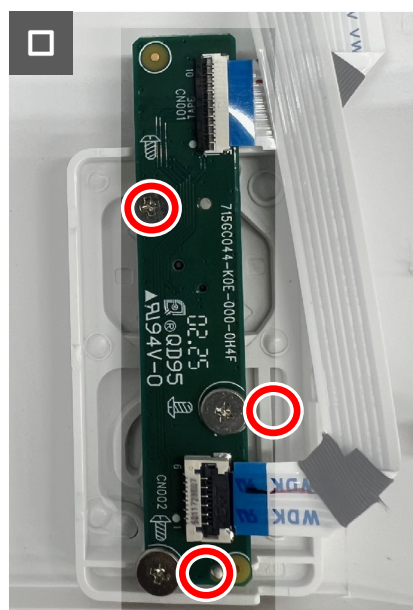
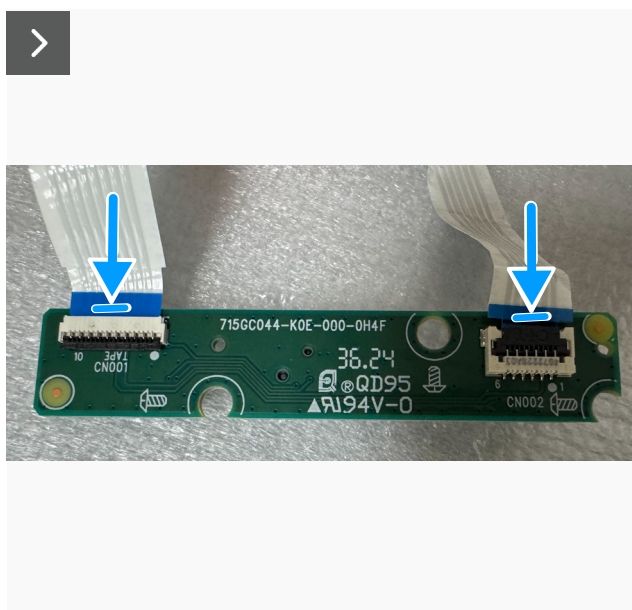
### About this task

The following image indicates the location of the keypad board and provides a visual representation of the installation procedure.





**3x**  
**Q2x3**



**Figure 30.** Connecting the cables and installing the keypad board

#### Steps

1. Connect the cables to the connectors on the keypad board.
2. Align and place the keypad board on the back cover.
3. Replace the three screws (Q2x3) to secure the keypad board to the back cover.

#### Next steps

1. Install the [back cover](#).
2. Install the [stand](#).
3. Follow the procedure in [After working inside your monitor](#).

# Regulatory information

## FCC notices (U.S. Only) and other regulatory information

For FCC notices and other regulatory information, see the regulatory compliance website at [www.dell.com/regulatory\\_compliance](http://www.dell.com/regulatory_compliance).

## EU product database for energy label and product information sheet

**S3225QC:** <https://eprel.ec.europa.eu/qr/2200407>

# Contacting Dell

To contact Dell for sales, technical support, or customer service issues, see [www.dell.com/contactdell](http://www.dell.com/contactdell).

- ① **NOTE:** Availability varies by country, region, or product, and some services may not be available in your country.
- ① **NOTE:** If you do not have an active Internet connection, you can find contact information about your purchase invoice, packing slip, bill, or Dell product catalog.