


# **Dell 32 Plus 4K Monitor**

## **S3225QS**

### Teardown Instructions

## Notes, cautions, and warnings

 **NOTE:** A NOTE indicates important information that helps you make better use of your product.

 **CAUTION:** A CAUTION indicates either potential damage to hardware or loss of data and tells you how to avoid the problem.

 **WARNING:** A WARNING indicates a potential for property damage, personal injury, or death.

# Contents

<b>Safety instructions</b>	<b>4</b>
Before working inside your monitor	4
After working inside your monitor	4
<b>Disassembly and reassembly</b>	<b>5</b>
Recommended tools	5
Screw list	5
Stand	6
Removing the stand	6
Installing the stand	6
Back cover	7
Removing the back cover	7
Installing the back cover	9
Speaker	12
Removing the speaker	12
Installing the speaker	13
Metal shield	15
Removing the metal shield	15
Installing the metal shield	17
System board and power board	20
Removing the system board and power board	20
Installing the system board and power board	22
Middle frame	25
Removing the middle frame	25
Installing the middle frame	27
Keypad board	28
Removing the keypad board	28
Installing the keypad board	29
<b>Regulatory information</b>	<b>31</b>
FCC notices (U.S. Only) and other regulatory information	31
EU product database for energy label and product information sheet	31
<b>Contacting Dell</b>	<b>32</b>

# Safety instructions

Use the following safety guidelines to protect your monitor from potential damage and to ensure your personal safety. Unless otherwise noted, each procedure included in this document assumes that you have read the safety information that is shipped with your monitor.

**NOTE:** Before using the monitor, read the safety information that is shipped with your monitor and printed on the product. Keep the documentation at a secure location for future reference.

**WARNING:** Use of controls, adjustments, or procedures other than those specified in this documentation may result in exposure to shock, electrical hazards and/or mechanical hazards.

**CAUTION:** The possible long-term effect of listening to audio at high volume through the headphones (on a monitor that supports it) may damage your hearing ability.

- Place the monitor on a solid surface and handle it carefully.
  - The screen is fragile and can be damaged if dropped or press with a sharp object.
  - Ensure that your monitor is electrically rated to operate with the AC power available in your location.
  - Keep the monitor in room temperature. Excessive cold or hot conditions can have an adverse effect on the liquid crystal of the display.
  - Connect the power cable from the monitor to a wall outlet that is near and accessible.
- Do not place and use the monitor on a wet surface or near water.
- Do not subject the monitor to severe vibration or high impact conditions. For example, do not place the monitor inside a car trunk.
- Unplug the monitor when it is going to be left unused for an extended period.
- To avoid electric shock, do not attempt to remove any cover or touch the inside of the monitor.
- Read these instructions carefully. Keep this document for future reference. Follow all warnings and instructions marked on the product.
- Certain monitors can be wall mounted using the VESA mount that is sold separately. Ensure to use the correct VESA specifications as mentioned in the wall mounting section of the User's Guide.

For information about safety instructions, see the Safety, Environmental, and Regulatory Information (SERI) document that is shipped with your monitor.

## Before working inside your monitor

### Steps

1. Save and close all open files and exit all open applications.
2. Turn off your monitor.
3. Disconnect your monitor and all attached devices from their electrical outlets.
4. Disconnect all attached network devices and peripherals, such as keyboard, mouse, and dock from your monitor.
- CAUTION:** To disconnect a network cable, first unplug the cable from your monitor and then unplug the cable from the network device.
5. Remove any media card and optical disc from your monitor, if applicable.

## After working inside your monitor

**CAUTION:** Leaving stray or loose screws inside your monitor may severely damage your monitor.

### Steps

1. Replace all screws and ensure that no stray screws remain inside your monitor.
2. Connect any external devices, peripherals, or cables you removed before working on your monitor.
3. Replace any media cards, discs, or any other parts that you removed before working on your monitor.
4. Connect your monitor and all attached devices to their electrical outlets.
5. Turn on your monitor.



# Disassembly and reassembly

**CAUTION:** The information in this section is intended for authorized service technicians in the EMEA region. Dell prohibits users from disassembling the monitor, and any damage caused by unauthorized servicing will not be covered under the warranty.

## Recommended tools











The procedures in this document may require the following tools:

- Screwdriver (Phillips-head, Hexagonal head)
- Plastic scribe

## Screw list

- NOTE:** When removing screws from a component, it is recommended to note the screw type, the quantity of screws, and then place them in a screw storage box. This is to ensure that the correct number of screws and correct screw type is restored when the component is replaced.
- NOTE:** Some computers have magnetic surfaces. Ensure that the screws are not left attached to such surfaces when replacing a component.
- NOTE:** Screw color may vary with the configuration ordered.

**Table 1. Screw list.**

Component	Screw types	Quantity	Screw images
Back cover	M4x10	4	
Speaker	M3x6	6	
Metal shield	M3x4	3	
System board	D3x6	4	
Power board	D3x6	4	
	M4x6	1	
Converter board	D3x6	4	
Middle frame	M3x4	16	
Front trim	M2x2.0	6	
Keypad board	Q2x2.5	3	

## Stand

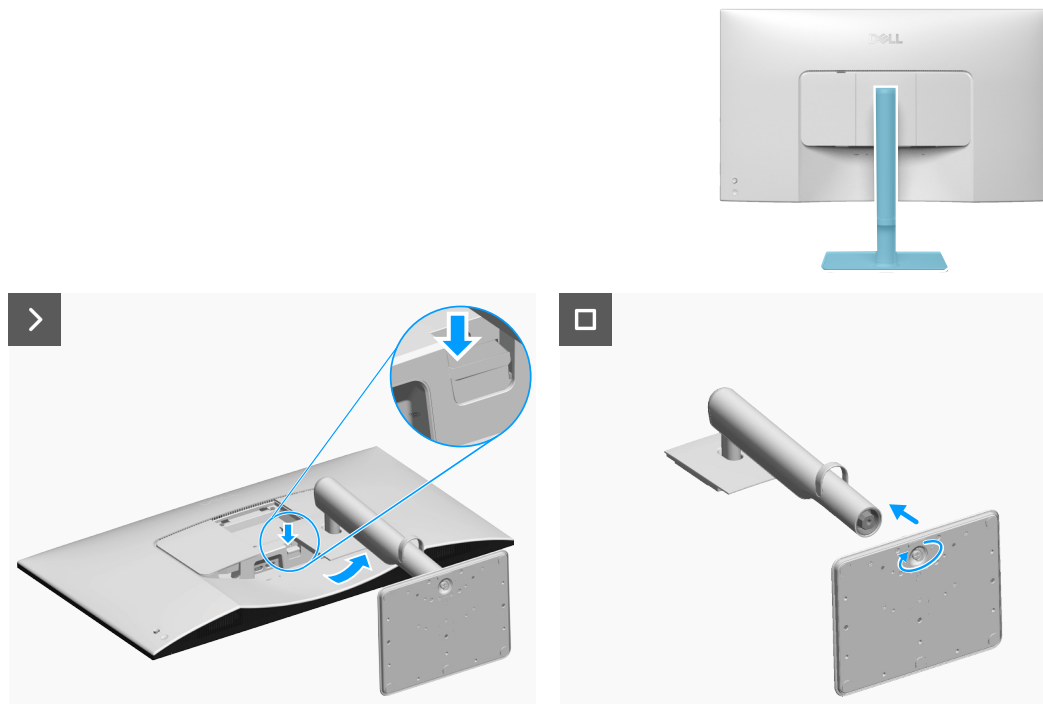
### Removing the stand

#### Prerequisites

1. Follow the procedure in [Before working inside your monitor](#).

#### About this task

The following image indicates the location of the stand and provides a visual representation of the removal procedure.



**Figure 1. Removing the stand**

#### Steps

1. Place the monitor on a clean, flat surface on a soft cloth or cushion.
2. Press the release button and pull the stand assembly away from the monitor.
3. Open the screw handle at the bottom of the stand base and turn it anti-clockwise to unlock the riser from the base.
4. Detach the stand riser from the stand base.

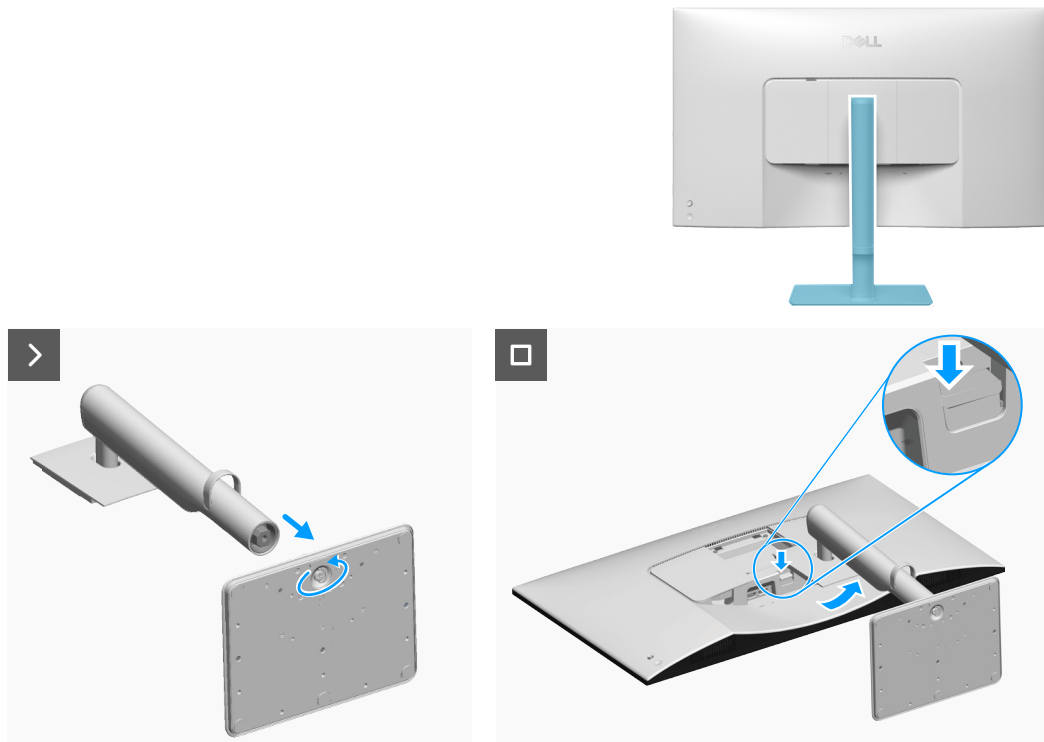
### Installing the stand

#### Prerequisites

If you are replacing a component, remove the existing component before performing the installation procedure.

#### About the task

The following image indicates the location of the stand and provides a visual representation of the installation procedure.



**Figure 2. Installing the stand**

#### Steps

1. Align and insert the stand riser into the stand base until it snaps into place.
2. Open the screw handle at the bottom of the stand base and turn it clockwise to secure the stand assembly.
3. Close the screw handle.
4. Align the stand-riser bracket with the grooves at the back of the monitor.
5. Slide and gently press the stand assembly until it snaps into place.

#### Next steps

1. Follow the procedure in [After working inside your monitor](#).

### Back cover

#### Removing the back cover

##### Prerequisites

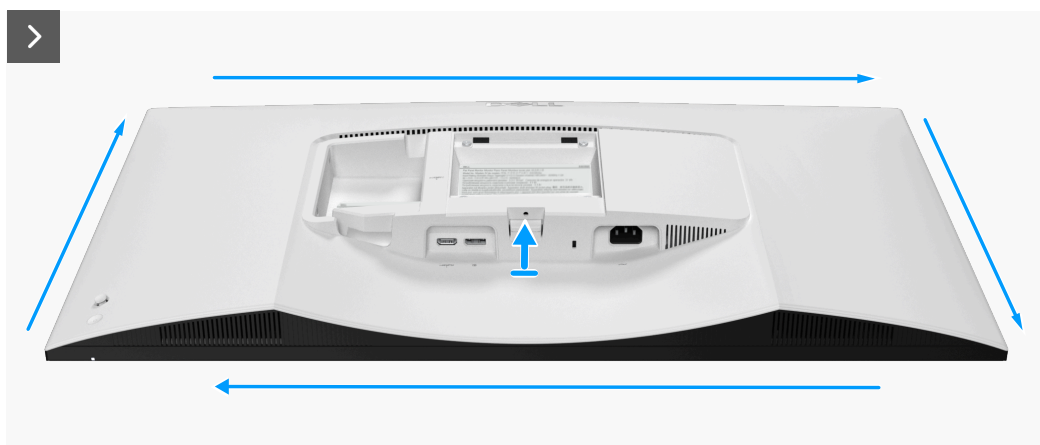
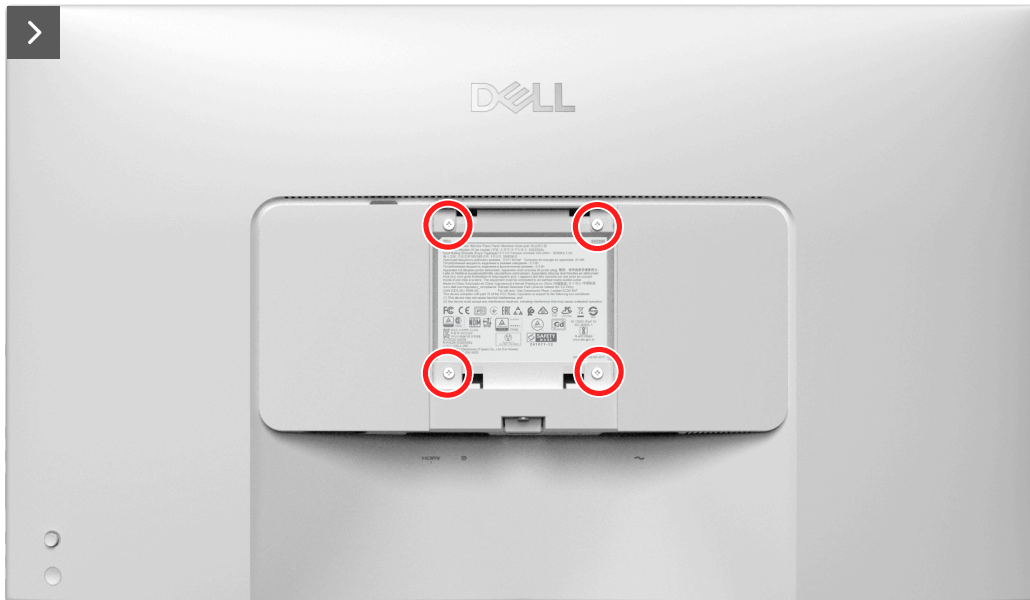
1. Follow the procedure in [Before working inside your monitor](#).
2. Remove the [stand](#).

##### About this task

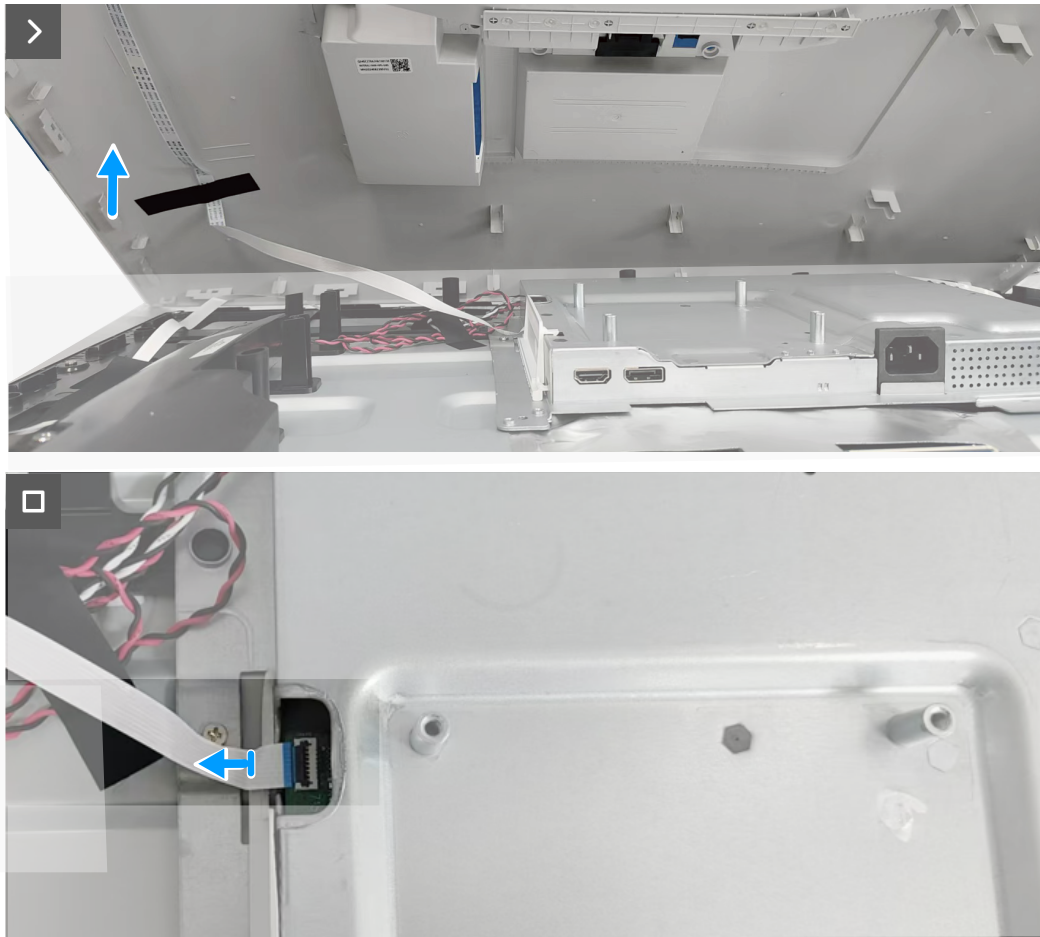
The following image indicates the location of the back cover and provides a visual representation of the removal procedure.



**4x**  
**M4x10**



**Figure 3.** Removing the screws and prying the back cover



**Figure 4. Disconnecting the keypad board cable**

#### **Steps**

1. Remove the four screws (M4x10) that secure the back cover to the monitor.
2. Using a plastic scribe, pry the back cover starting from the bottom edge of the monitor.
3. Lift the back cover partially from the bottom edge and disconnect the keypad board cable from the connector on the system board.

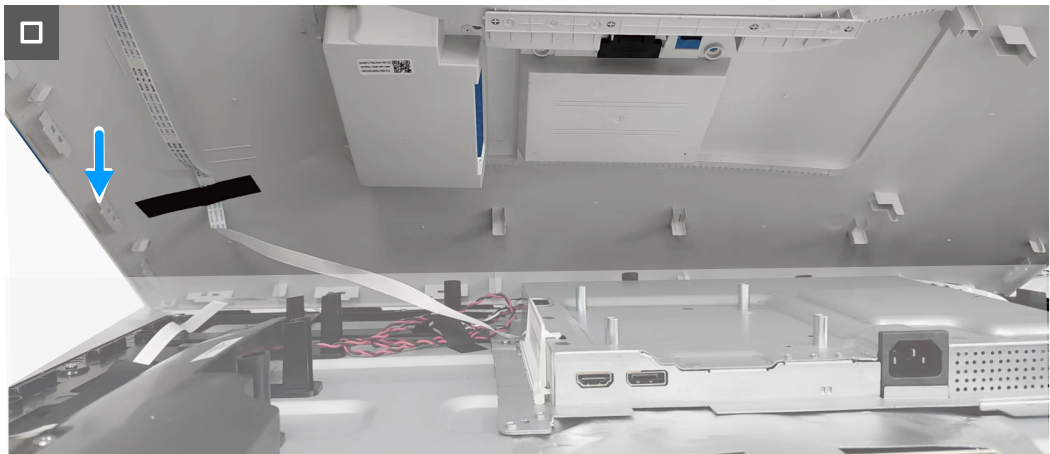
#### **Installing the back cover**

##### **Prerequisites**

If you are replacing a component, remove the existing component before performing the installation procedure.

##### **About the task**

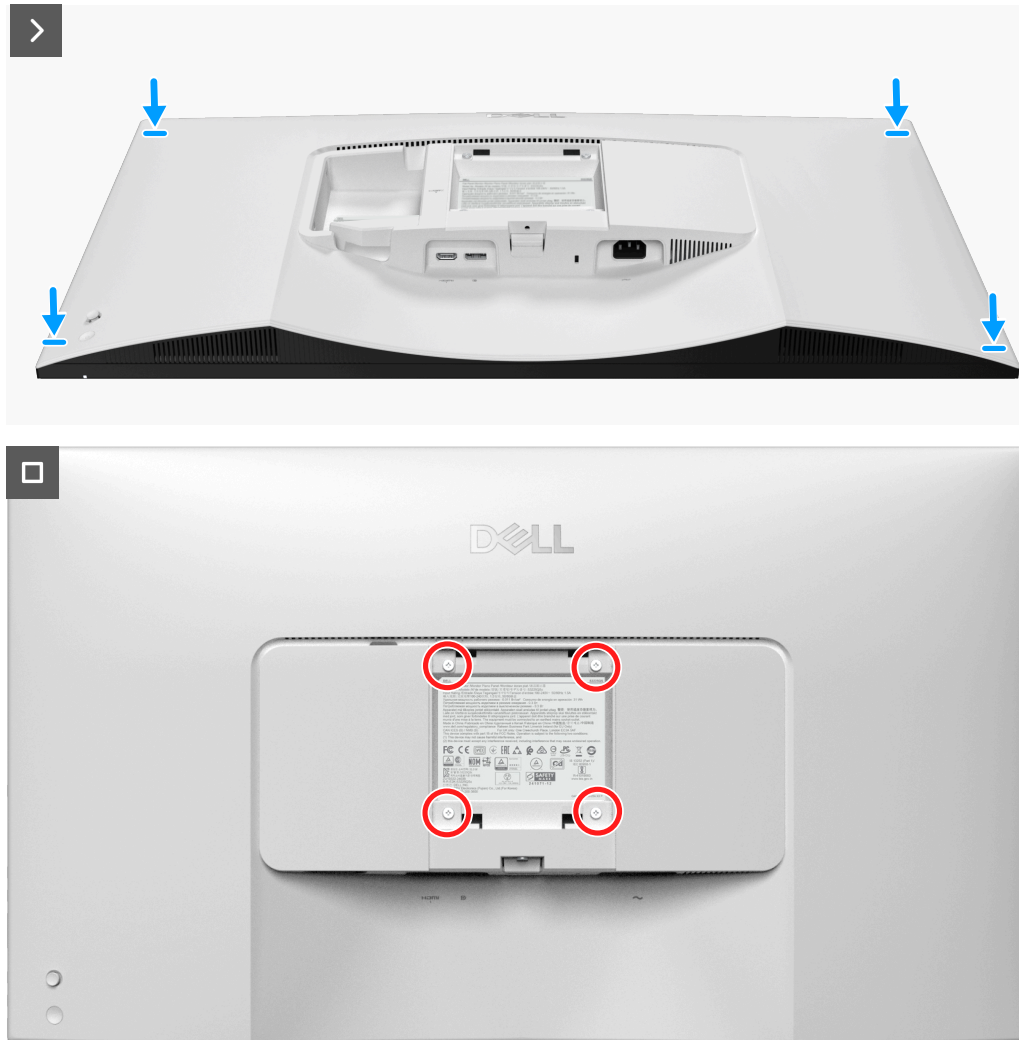
The following image indicates the location of the back cover and provides a visual representation of the installation procedure.



**Figure 5.** Connecting the keypad board cable



**4x**  
**M4x10**



**Figure 6. Replacing the screws**

#### Steps

1. Connect the keypad board cable to the connector on the system board.
2. Align the screw holes on the back cover with the screw holes on the monitor, and gently press along the sides to snap the back cover into place.
3. Replace the four screws (M4x10) to secure the back cover to the monitor.

#### Next steps

1. Install the [stand](#).
2. Follow the procedure in [After working inside your monitor](#).



## Speaker

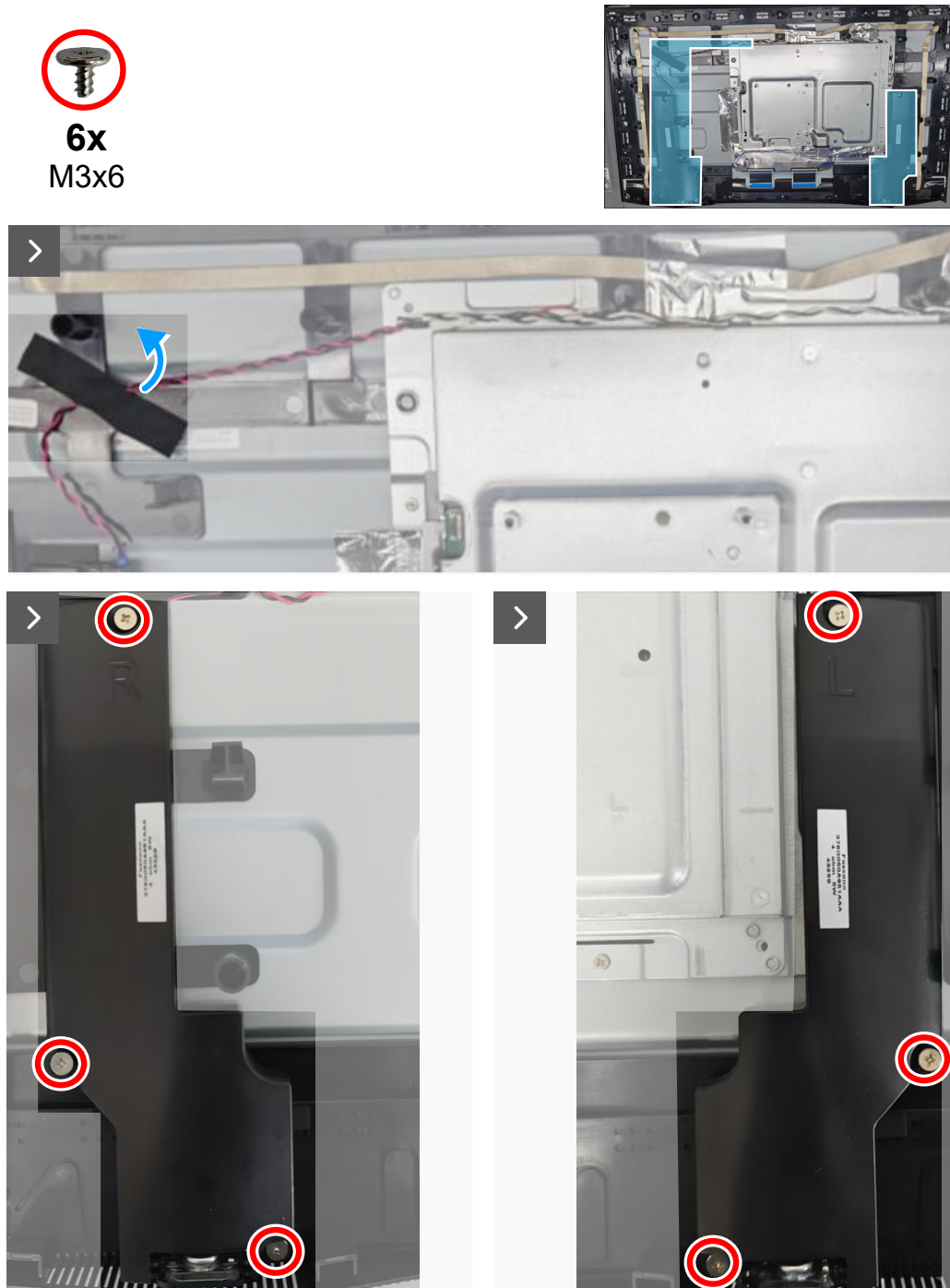
### Removing the speaker

#### Prerequisites

1. Follow the procedure in [Before working inside your monitor](#).
2. Remove the [stand](#).
3. Remove the [back cover](#).

#### About this task

The following image indicates the location of the speaker and provides a visual representation of the removal procedure.



**Figure 7.** Removing the screws





**Figure 8. Disconnecting the speaker cable**

### Steps

1. Peel back the tape that secures the speaker cable to the display panel.
2. Remove the six screws (M3x6) that secure the speakers to the middle frame.
3. Disconnect the speaker cable from the connector on the system board.
4. Lift the speakers away from the chassis.

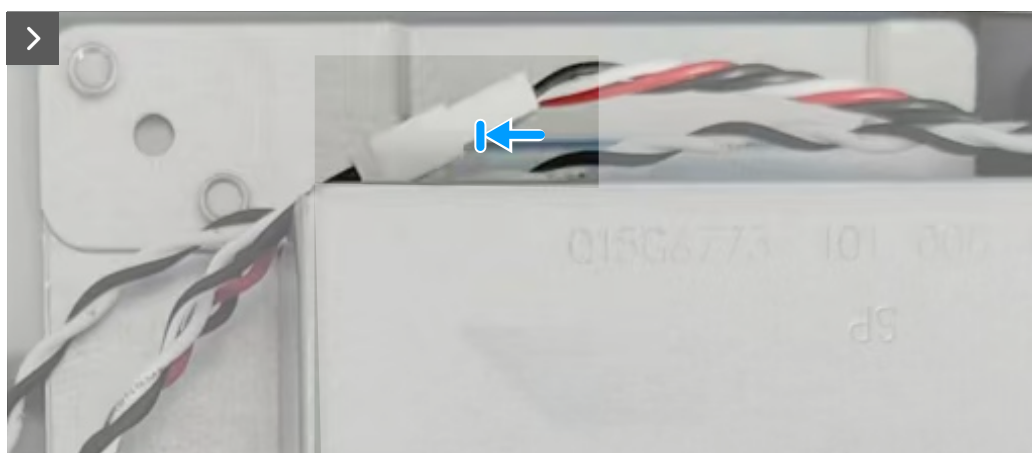
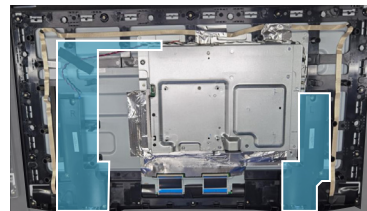
### Installing the speaker

#### Prerequisites

If you are replacing a component, remove the existing component before performing the installation procedure.

#### About the task

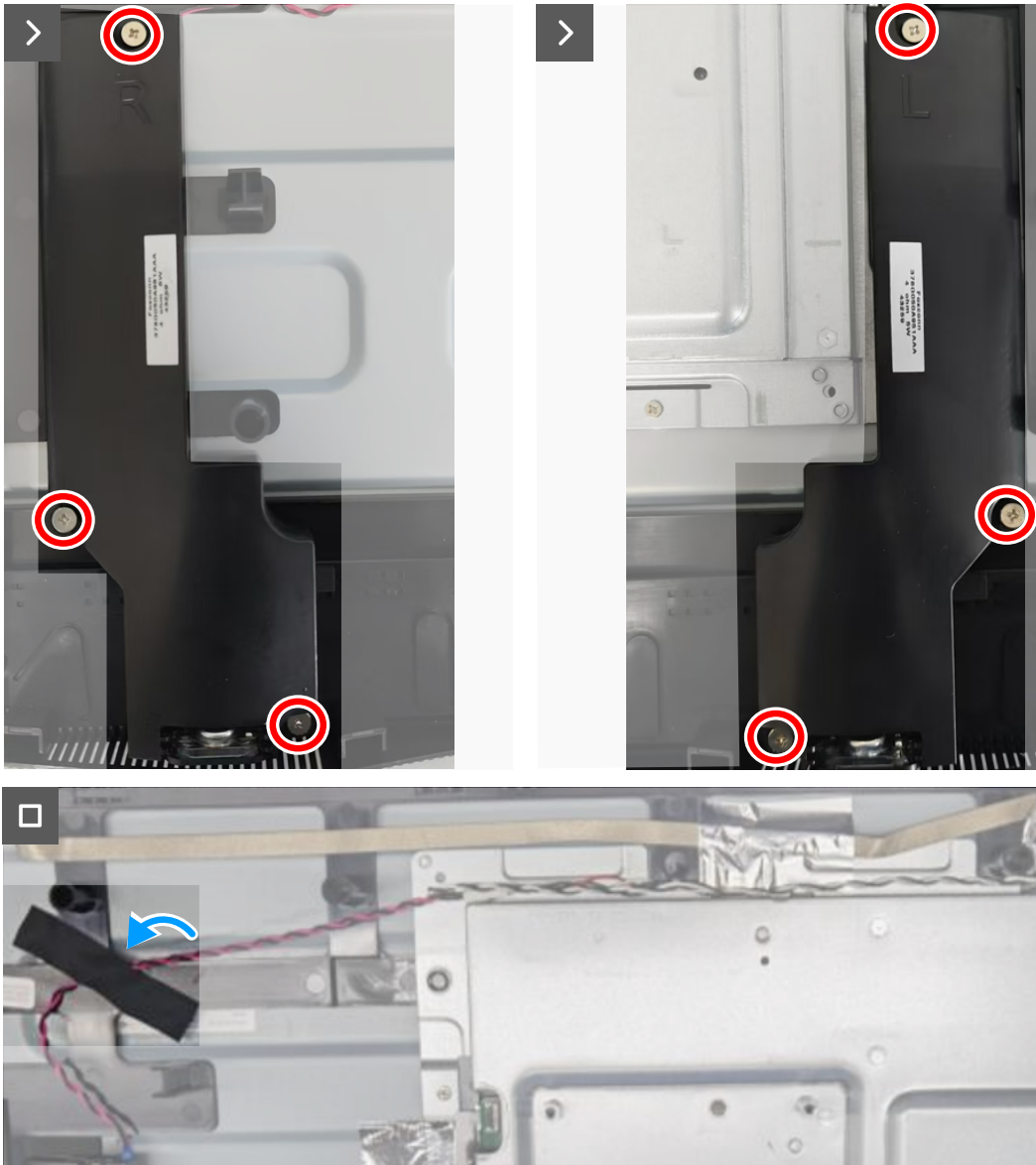
The following image indicates the location of the speaker and provides a visual representation of the installation procedure.



**Figure 9. Connecting the speaker cable**



**6x**  
**M3x6**



**Figure 10.** Replacing the screws

#### Steps

1. Align and place the speakers in the slots on the chassis.
2. Connect the speaker cable to the connector on the system board.
3. Replace the six screws (M3x6) to secure the speakers to the middle frame.
4. Adhere the tape to secure the speaker cable to the display panel.

#### Next steps

1. Install the [back cover](#).
2. Install the [stand](#).
3. Follow the procedure in [After working inside your monitor](#).

## Metal shield

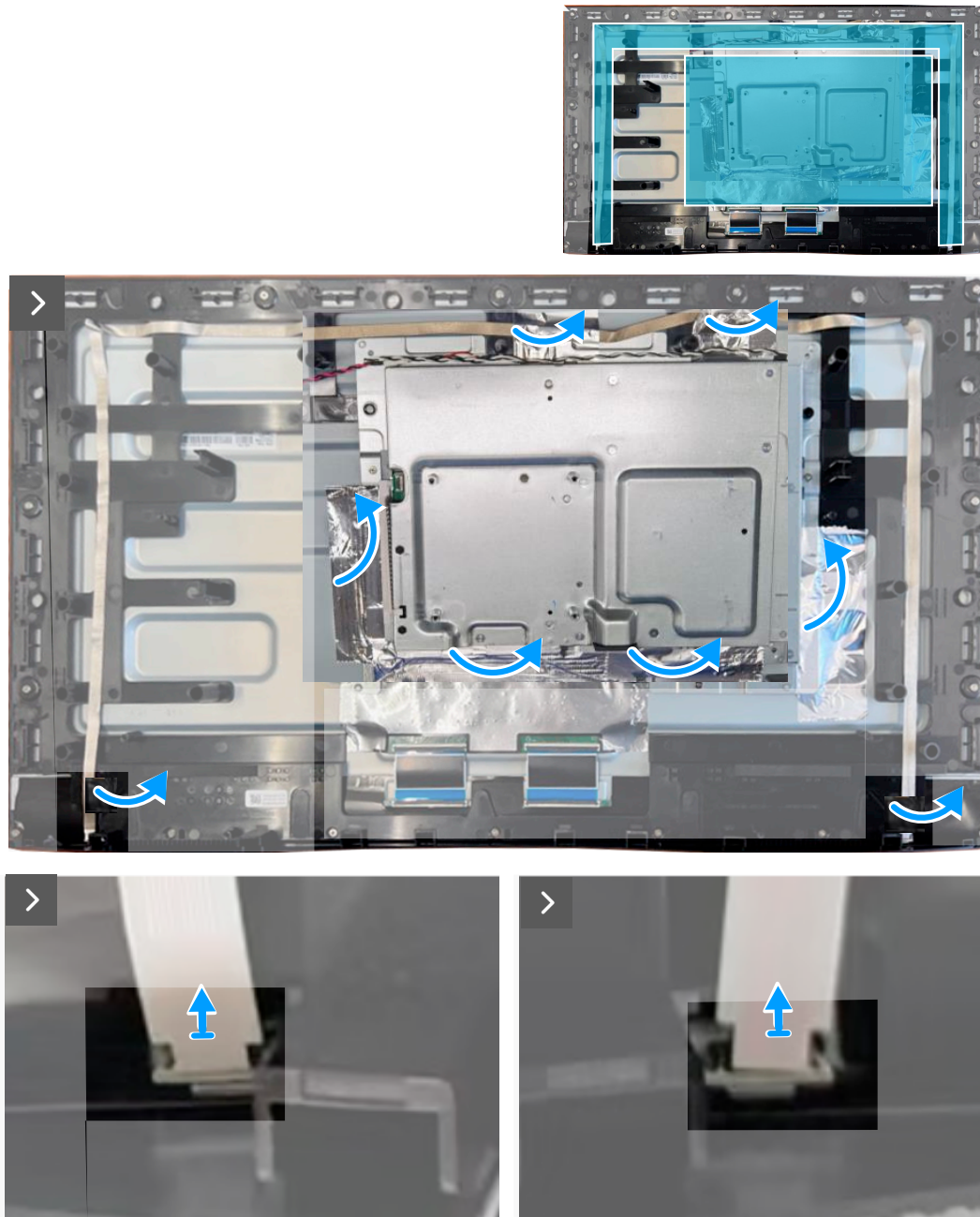
### Removing the metal shield

#### Prerequisites

1. Follow the procedure in [Before working inside your monitor.](#)
2. Remove the [stand.](#)
3. Remove the [back cover.](#)
4. Remove the [speaker.](#)

#### About this task

The following image indicates the location of the metal shield and provides a visual representation of the removal procedure.



**Figure 11.** Disconnecting the lightbar cables



**3x**  
**M3x4**



**Figure 12.** Removing the screws



**Figure 13.** Disconnecting the display cable



## Steps

1. Peel back the tapes that secure the lightbar cables and metal shield to the display panel.
2. Disconnect the lightbar cables from the connectors on the display panel.
3. Remove the three screws (M3x4) that secure the metal shield to the display panel.
4. Lift the metal shield partially and disconnect the display cable from the connector on the display panel.

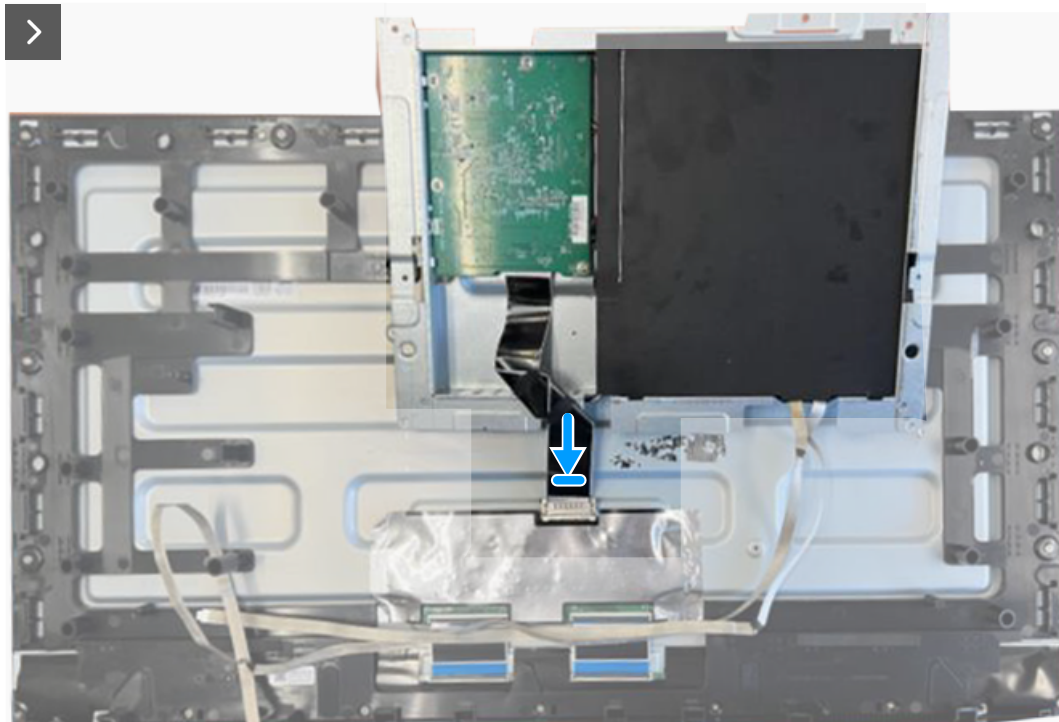
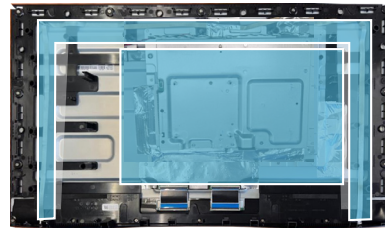
## Installing the metal shield

### Prerequisites

If you are replacing a component, remove the existing component before performing the installation procedure.

### About the task

The following image indicates the location of the metal shield and provides a visual representation of the installation procedure.



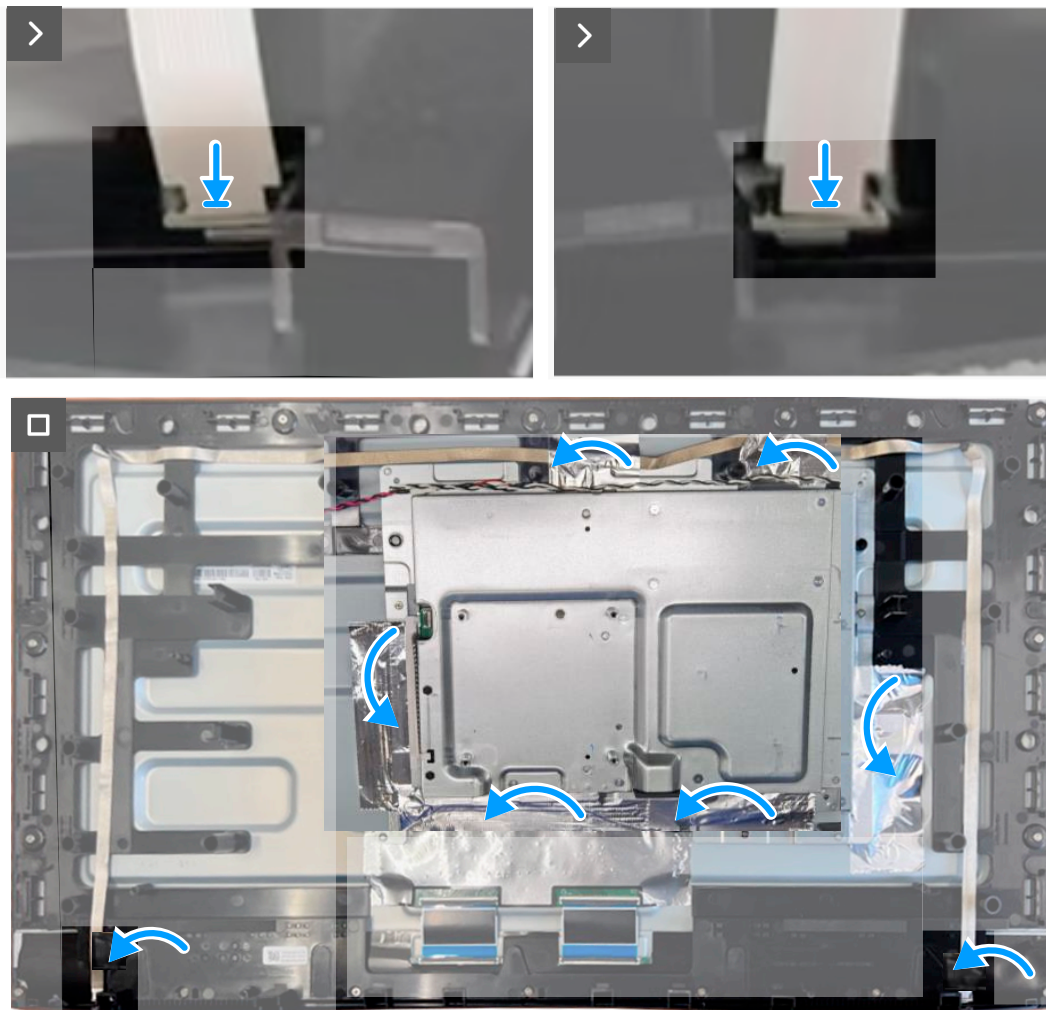
**Figure 14.** Connecting the display cable



**3x**  
M3x4



**Figure 15.** Replacing the screws



**Figure 16. Connecting the lightbar cables**

#### Steps

1. Lift the metal shield partially and connect the display cable to the connector on the display panel.
2. Align the screw holes on the metal shield to the screw holes on the display panel.
3. Replace the three screws (M3x4) to secure the metal shield to the display panel.
4. Connect the lightbar cables to the connectors on the display panel.
5. Adhere the tapes to secure the lightbar cables and metal shield to the display panel.

#### Next steps

1. Install the [speaker](#).
2. Install the [back cover](#).
3. Install the [stand](#).
4. Follow the procedure in [After working inside your monitor](#).

## System board and power board

### Removing the system board and power board

#### Prerequisites

1. Follow the procedure in [Before working inside your monitor](#).
2. Remove the [stand](#).
3. Remove the [back cover](#).
4. Remove the [speaker](#).
5. Remove the [metal shield](#).

#### About this task

The following image indicates the location of the system board and power board, and provides a visual representation of the removal procedure.



**Figure 17.** Removing the Mylar sheet





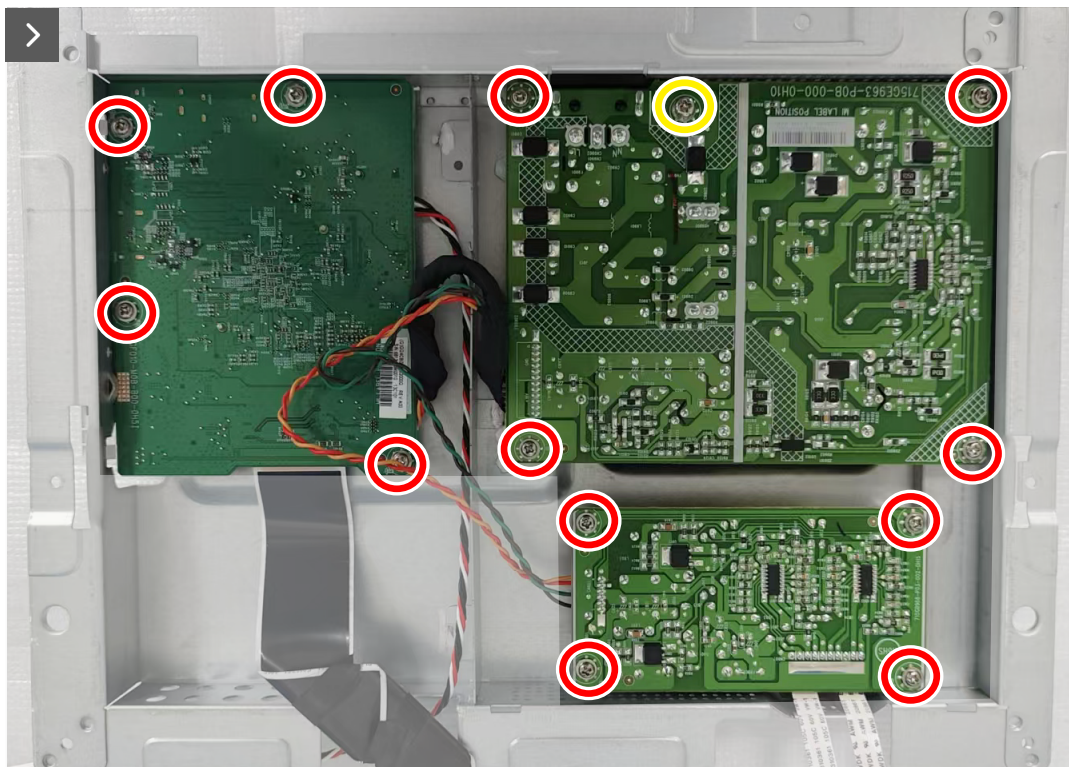
**Figure 18.** Removing the metal shield I/O-cover



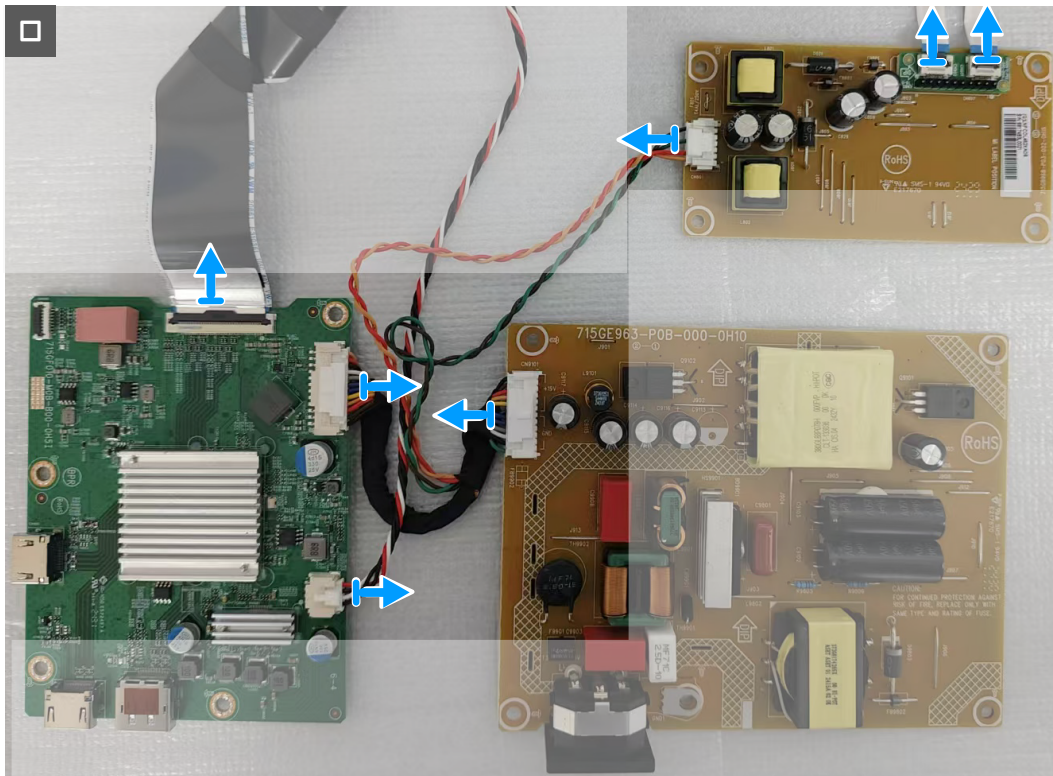
**12x**  
D3x6



**1x**  
M4x6



**Figure 19.** Removing the screws



**Figure 20. Disconnecting the cables**

### Steps

1. Remove the Mylar sheet from the power board.
2. Remove the metal shield I/O-cover from the metal shield.
3. Remove the twelve screws (D3x6) and the screw (M4x6) that secures the system board, power board, and converter board to the metal shield.
4. Disconnect the cables from the connectors on the system board, power board, and converter board.

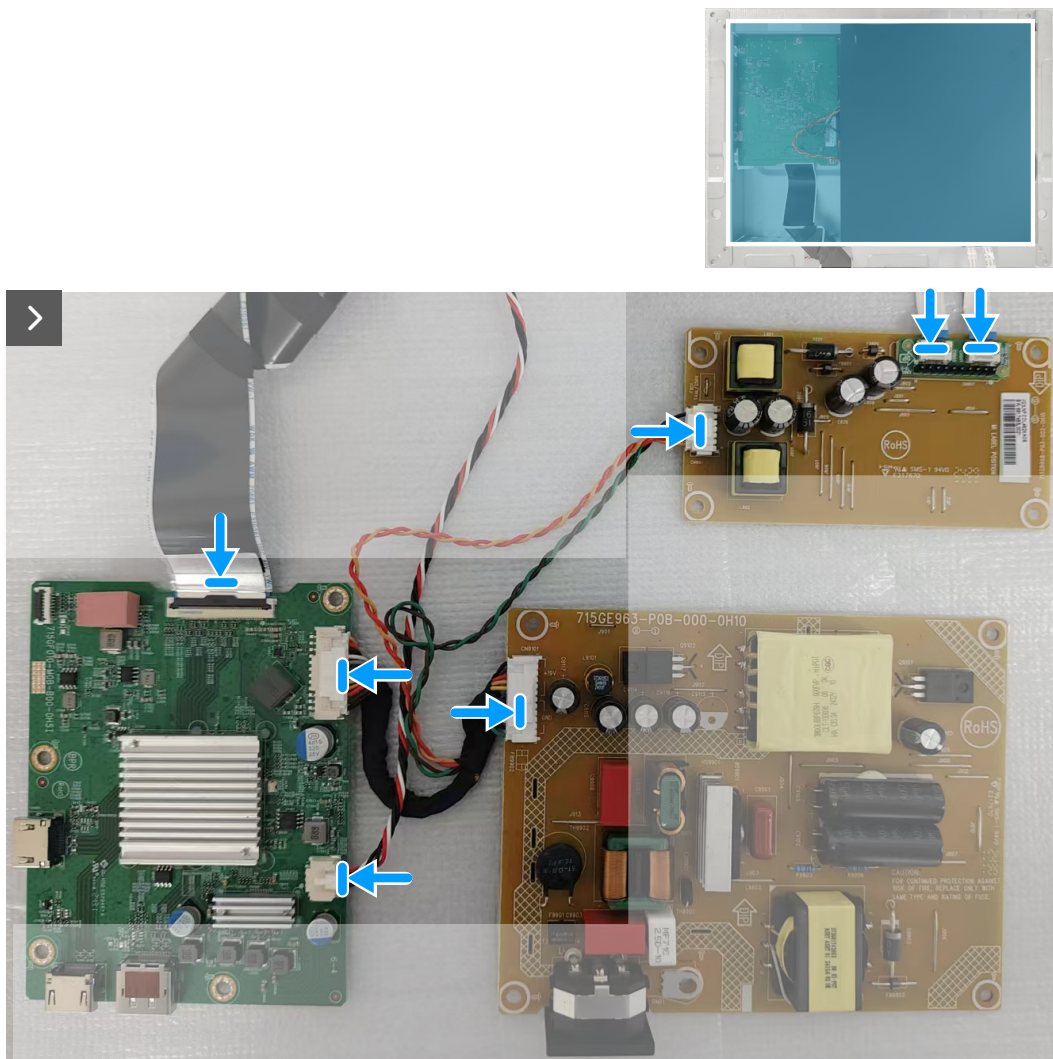
## Installing the system board and power board

### Prerequisites

If you are replacing a component, remove the existing component before performing the installation procedure.

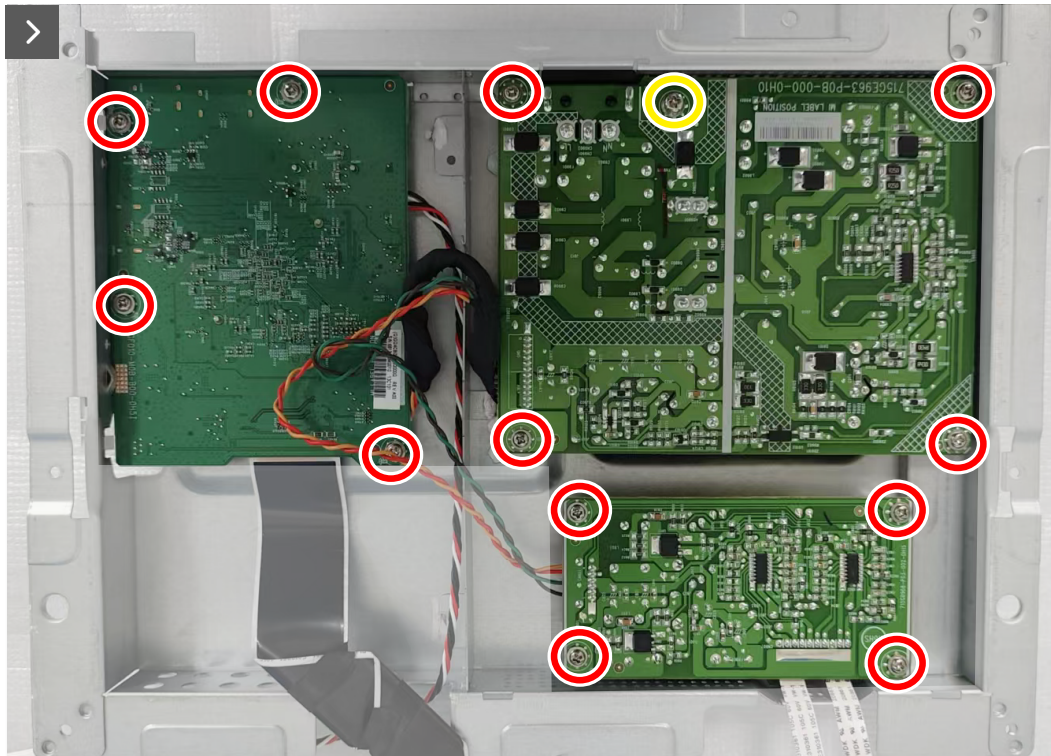
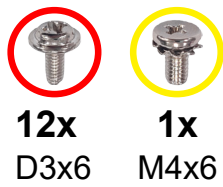
### About the task

The following image indicates the location of the system board and power board, and provides a visual representation of the installation procedure.



**Figure 21.** Connecting the cables





**Figure 22.** Replacing the screws



**Figure 23.** Replacing the metal shield I/O-cover



**Figure 24. Placing the Mylar sheet**

#### Steps

1. Connect the cables to the connectors on the system board, power board, and converter board.
2. Replace the twelve screws (D3x6) and the screw (M4x6) to secure the system board, power board, and converter board to the metal shield.
3. Replace the metal shield I/O-cover on the metal shield.
4. Place the Mylar sheet on the power board.

#### Next steps

1. Install the [metal shield](#).
2. Install the [speaker](#).
3. Install the [back cover](#).
4. Install the [stand](#).
5. Follow the procedure in [After working inside your monitor](#).

## Middle frame

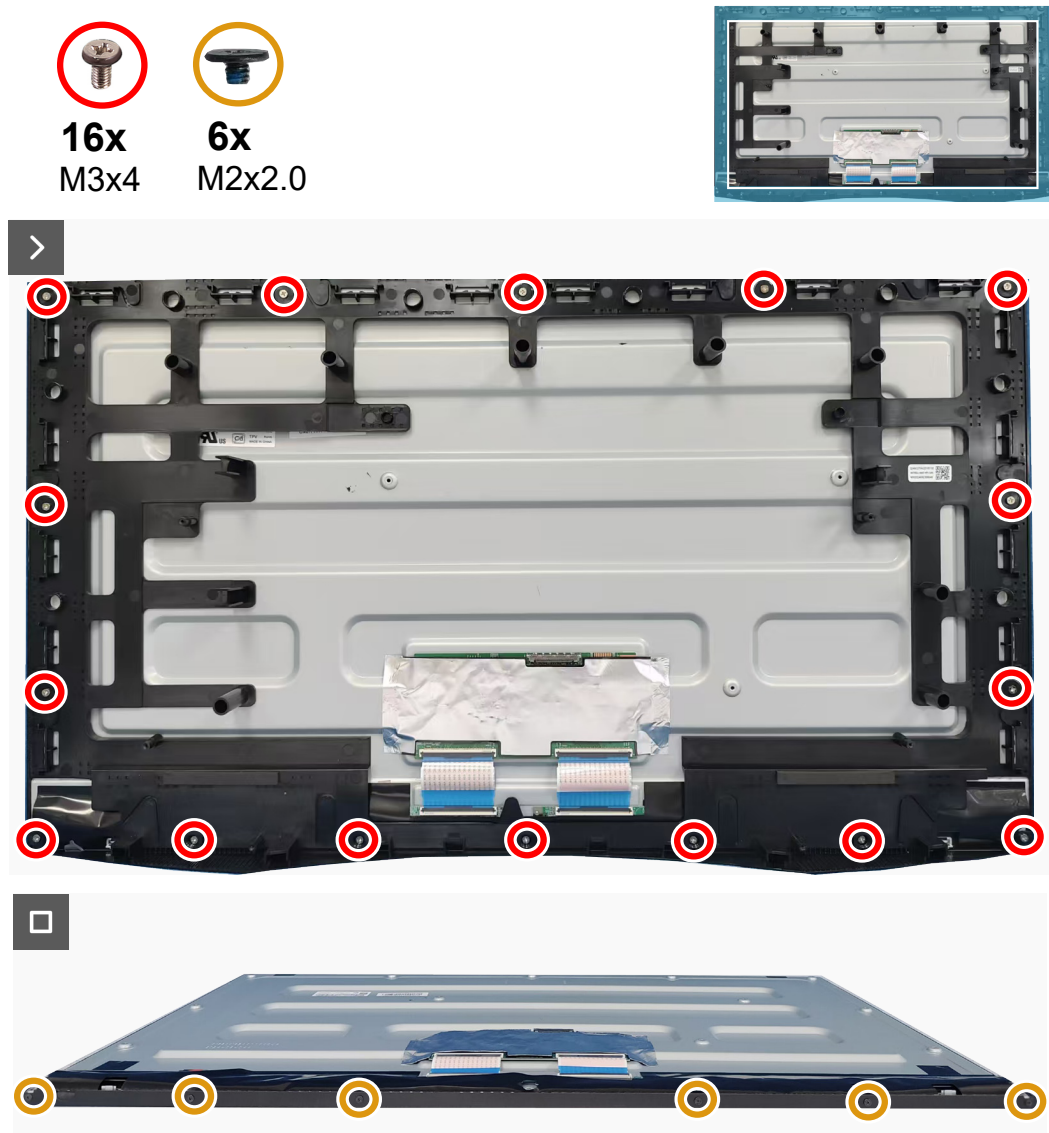
### Removing the middle frame

#### Prerequisites

1. Follow the procedure in [Before working inside your monitor](#).
2. Remove the [stand](#).
3. Remove the [back cover](#).
4. Remove the [speaker](#).
5. Remove the [metal shield](#).

#### About this task

The following image indicates the location of the middle frame and provides a visual representation of the removal procedure.



**Figure 25.** Removing the screws

## Steps

1. Remove the sixteen screws (M3x4) that secure the middle frame to the display panel.
2. Lift and remove the middle frame away from the display panel.
3. Remove the six screws (M2x2.0) that secure the front trim to the display panel.
4. Remove the front trim away from the display panel.

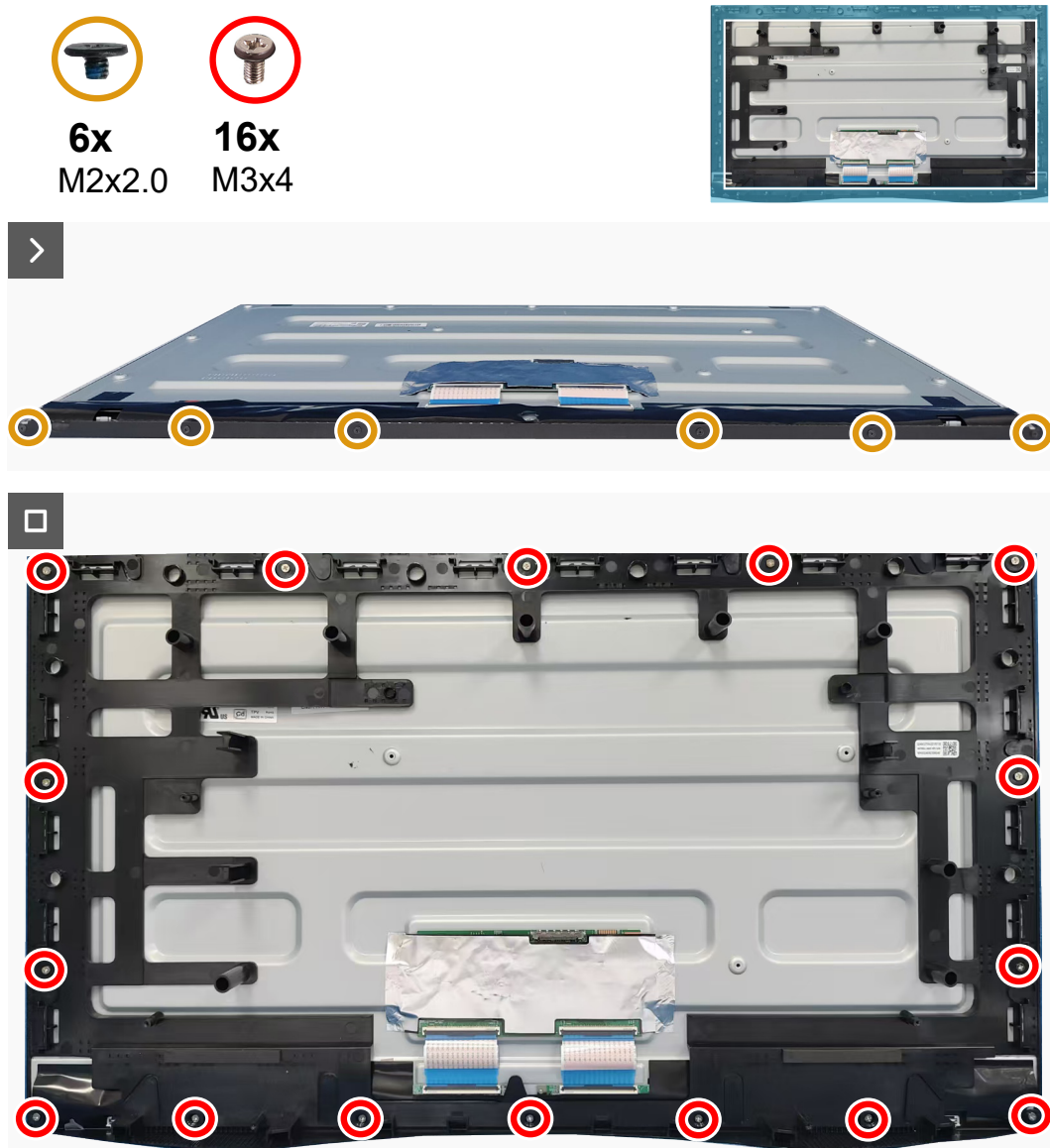
## Installing the middle frame

### Prerequisites

If you are replacing a component, remove the existing component before performing the installation procedure.

### About the task

The following image indicates the location of the middle frame and provides a visual representation of the installation procedure.



**Figure 26.** Replacing the screws

## Steps

1. Align and place the front trim on the display panel.
2. Replace the six screws (M2x2.0) to secure the front trim to the display panel.
3. Align the middle frame and display panel.
4. Replace the sixteen screws (M3x4) to secure the middle frame to the display panel.



### Next steps

1. Install the [metal shield](#).
2. Install the [speaker](#).
3. Install the [back cover](#).
4. Install the [stand](#).
5. Follow the procedure in [After working inside your monitor](#).

## Keypad board

### Removing the keypad board

#### Prerequisites

1. Follow the procedure in [Before working inside your monitor](#).
2. Remove the [stand](#).
3. Remove the [back cover](#).

#### About this task

The following image indicates the location of the keypad board and provides a visual representation of the removal procedure.

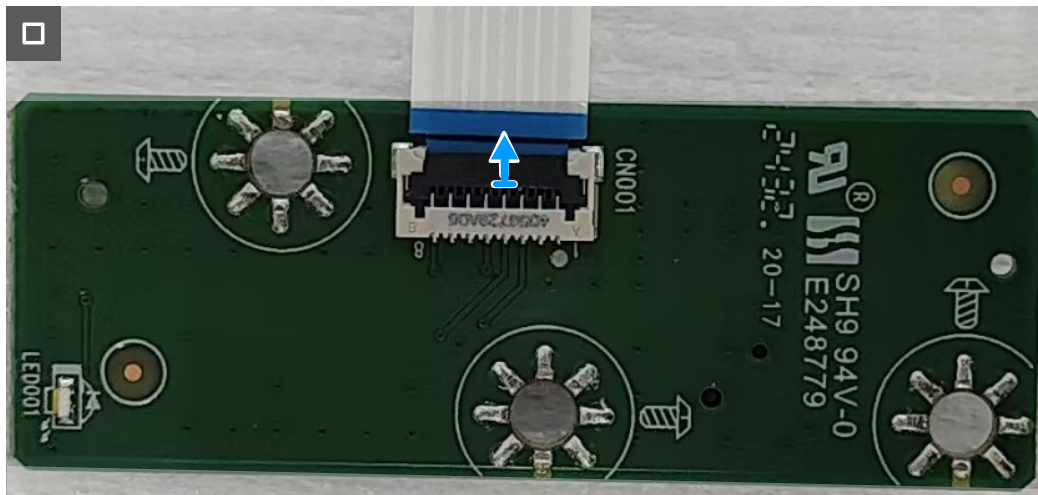


**3x**  
**Q2x2.5**



**Figure 27.** Removing the screws





**Figure 28. Disconnecting the keypad board cable**

### Steps

1. Remove the three screws (Q2X2.5) that secure the keypad board to the back cover.
2. Disconnect the keypad board cable from the connector on the keypad board.

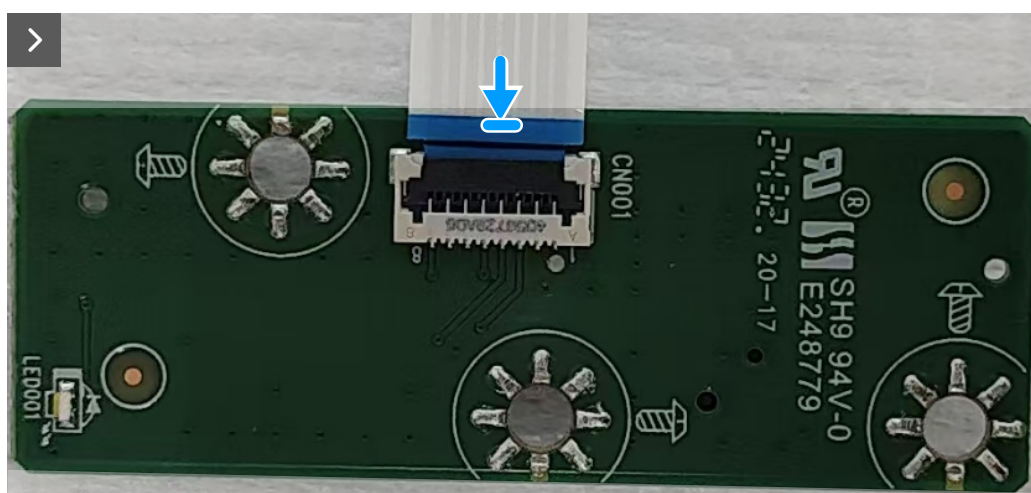
## Installing the keypad board

### Prerequisites

If you are replacing a component, remove the existing component before performing the installation procedure.

### About the task

The following image indicates the location of the keypad board and provides a visual representation of the installation procedure.



**Figure 29. Connecting the keypad board cable**



**3x**  
Q2x2.5



**Figure 30.** Replacing the screws

#### Steps

1. Connect the keypad board cable to the connector on the keypad board.
2. Replace the three screws (Q2x2.5) to secure the keypad board to the back cover.

#### Next steps

1. Install the [back cover](#).
2. Install the [stand](#).
3. Follow the procedure in [After working inside your monitor](#).

# Regulatory information

## FCC notices (U.S. Only) and other regulatory information

For FCC notices and other regulatory information, see the regulatory compliance website at [www.dell.com/regulatory\\_compliance](http://www.dell.com/regulatory_compliance).

## EU product database for energy label and product information sheet

**S3225QS:** <https://eprel.ec.europa.eu/qr/2200407>

# Contacting Dell

To contact Dell for sales, technical support, or customer service issues, see [www.dell.com/contactdell](http://www.dell.com/contactdell).

- ① **NOTE:** Availability varies by country, region, or product, and some services may not be available in your country.
- ① **NOTE:** If you do not have an active Internet connection, you can find contact information about your purchase invoice, packing slip, bill, or Dell product catalog.