


# **Dell 27 Plus 4K USB-C Monitor**

## **S2725QC**

### Teardown Instructions

## Notes, cautions, and warnings

 **NOTE:** A NOTE indicates important information that helps you make better use of your product.

 **CAUTION:** A CAUTION indicates either potential damage to hardware or loss of data and tells you how to avoid the problem.

 **WARNING:** A WARNING indicates a potential for property damage, personal injury, or death.

# Contents

<b>Safety Instructions</b> .....	<b>4</b>
Before working inside your monitor .....	4
After working inside your monitor .....	4
<b>Disassembly and reassembly</b> .....	<b>5</b>
Recommended tools .....	5
Screw list .....	5
Stand .....	6
Removing the stand .....	6
Installing the stand .....	7
Back Cover .....	8
Removing the back cover .....	8
Installing the back cover .....	10
Interface board assembly .....	12
Removing the interface board assembly .....	12
Installing the interface board assembly .....	14
Interface board .....	16
Removing the interface board .....	16
Installing the interface board .....	18
Power board .....	20
Removing the power board .....	20
Installing the power board .....	21
<b>Contacting Dell</b> .....	<b>22</b>

# Safety Instructions

Use the following safety guidelines to protect your monitor from potential damage and to ensure your personal safety. Unless otherwise noted, each procedure included in this document assumes that you have read the safety information that shipped with your monitor.

**NOTE:** Before using the monitor, read the safety information that is shipped with your monitor and printed on the product. Keep the documentation at a secure location for future reference.

**WARNING:** Use of controls, adjustments, or procedures other than those specified in this documentation may result in exposure to shock, electrical hazards and/or mechanical hazards.

**CAUTION:** The possible long-term effect of listening to audio at high volume through the headphones (on monitor that support it) may cause damage to your hearing ability.

- Place the monitor on a solid surface and handle it carefully.
  - The screen is fragile and can be damaged if dropped or hit with a sharp object.
  - Ensure that your monitor is electrically rated to operate with the AC power available in your location.
  - Keep the monitor in room temperature. Excessive cold or hot conditions can have an adverse effect on the liquid crystal of the display.
  - Connect the power cable from the monitor to a wall outlet that is near and accessible. See Connecting the cables in the User's Guide.
- Do not place and use the monitor on a wet surface or near water.
- Do not subject the monitor to severe vibration or high impact conditions. For example, do not place the monitor inside a car trunk.
- Unplug the monitor when it is going to be left unused for an extended period.
- To avoid electric shock, do not attempt to remove any cover or touch the inside of the monitor.
- Read these instructions carefully. Keep this document for future reference. Follow all warnings and instructions that are marked on the product.
- Certain monitors can be wall mounted using the VESA mount that is sold separately. Ensure to use the correct VESA specifications as mentioned in the wall mounting section of the User's Guide.

For information about safety instructions, see the Safety, Environmental, and Regulatory Information (SERI) document that is shipped with your monitor.

## Before working inside your monitor

### Steps

1. Save and close all open files and exit all open applications.
2. Turn off your monitor.
3. Disconnect your monitor and all attached devices from their electrical outlets.
4. Disconnect all attached network devices and peripherals, such as keyboard, mouse, and dock from your monitor.

**CAUTION:** To disconnect a network cable, first unplug the cable from your monitor and then unplug the cable from the network device.

5. Remove any media card and optical disc from your monitor, if applicable.

## After working inside your monitor

**CAUTION:** Leaving any loose or misplaced screws inside your monitor may severely damage it.

### Steps

1. Replace all screws and ensure that no stray screws remain inside your monitor.
2. Connect any external devices, peripherals, or cables you removed before working on your monitor.
3. Replace any media cards, discs, or any other parts that you removed before working on your monitor.
4. Connect your monitor and all attached devices to their electrical outlets.
5. Turn on your monitor.

# Disassembly and reassembly

**⚠ CAUTION:** The information in this section is intended for authorized service technicians in the EMEA region. Dell prohibits users from disassembling the monitor, and any damage caused by unauthorized servicing will not be covered under the warranty.






## Recommended tools

- Phillips screwdriver #0
- Phillips screwdriver #2
- Plastic scribe

## Screw list

- i NOTE:** When removing screws from a component, it is recommended to note the screw type, the quantity of screws, and then place them in a screw storage box. This is to ensure that the correct number of screws and correct screw type is restored when the component is replaced.
- i NOTE:** Some computers have magnetic surfaces. Ensure that the screws are not left attached to such surfaces when replacing a component.
- i NOTE:** Screw color may vary with the configuration ordered.

**Table 1. Screw list**

Component	Screw type	Quantity	Screw image
Back cover	M4x10	4	
Chassis	M2x4	3	
Speaker	M3x6	6	
Interface board	M3x9	3	
Power board	M3x9	4	

# Stand

## Removing the stand

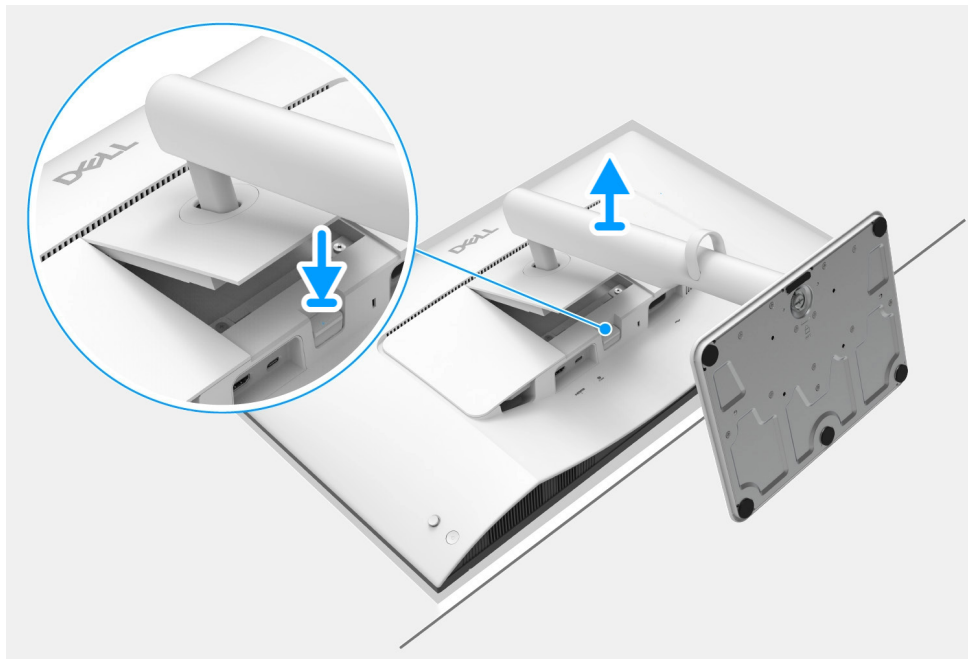
### Prerequisites

1. Follow the procedure in [Before working inside your monitor](#).

- ① **NOTE:** To prevent the LCD screen from scratches during stand removal, ensure the monitor is positioned on a soft surface and handled carefully.
- ① **NOTE:** The following steps are specific for removing the stand that is shipped with your monitor. If you are removing a stand that you purchased from any other source, follow the setup instructions that are included with the stand.

### Steps

1. Place the monitor on a soft cloth or cushion.
2. Press and hold the stand release button at the back of the display.
3. Lift the stand assembly up and away from the monitor.

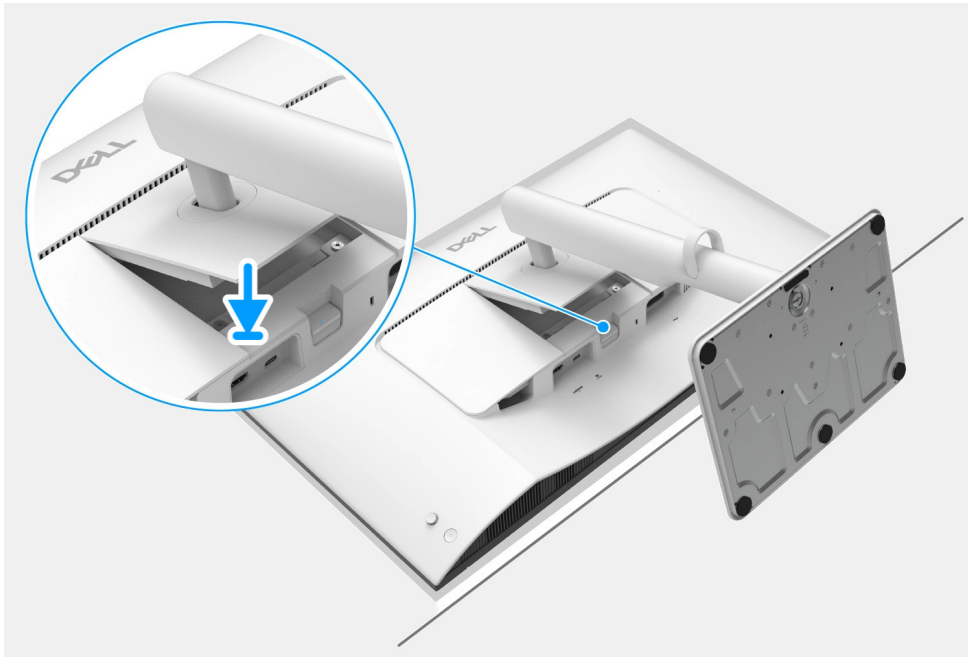


**Figure 1.** Removing the stand

## Installing the stand

### Steps

1. Carefully insert the tabs on the stand riser into the slots on the display back cover and press down the stand assembly to snap it into place.



**Figure 2.** Installing the stand

### Next steps

1. Follow the procedure in [After working inside your monitor.](#)

## Back Cover

### Removing the back cover

#### Prerequisites

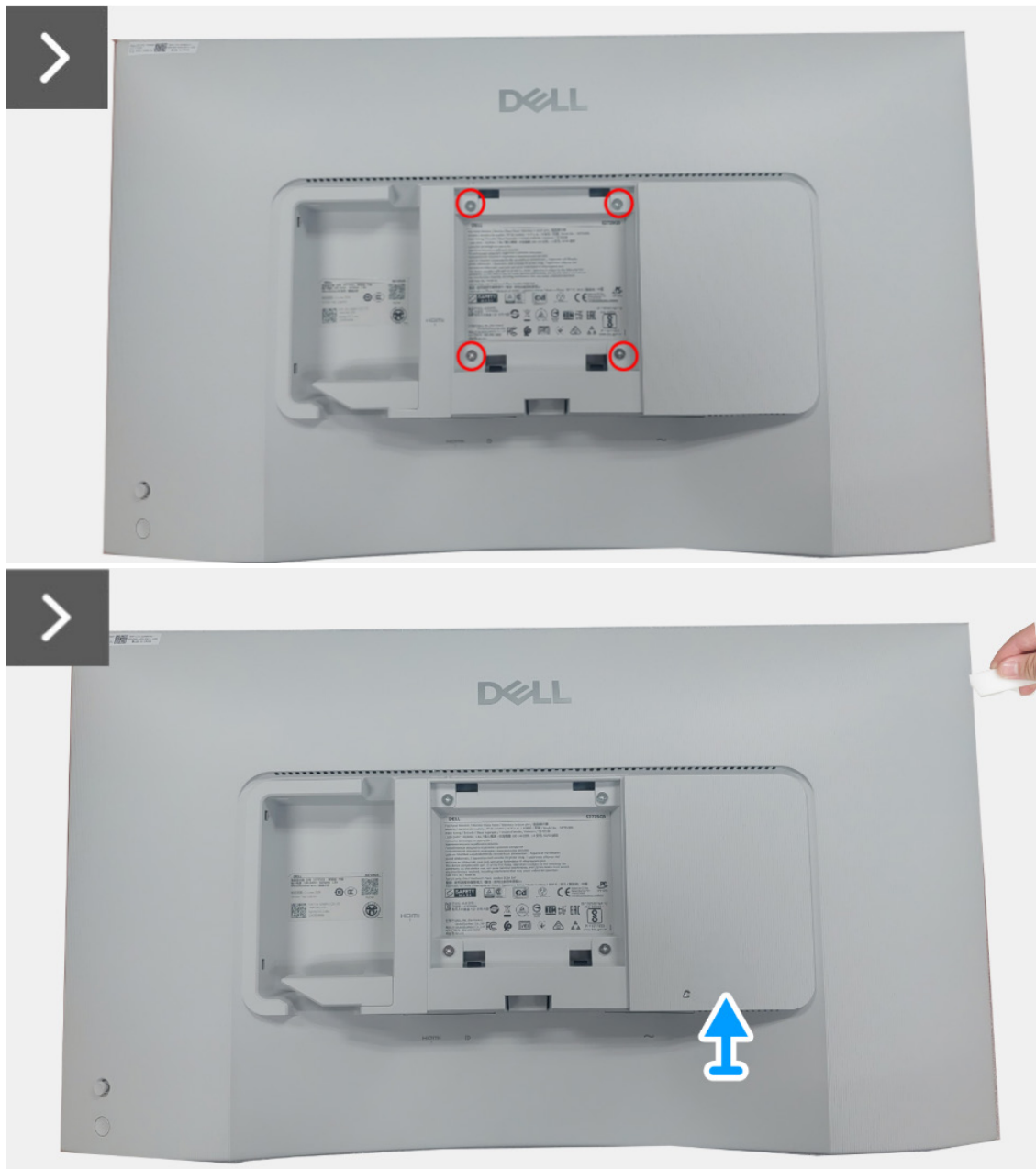
1. Follow the procedure in [Before working inside your monitor.](#)
2. Remove the [stand.](#)

#### Steps

1. Remove the four screws (M4x10) that secure the back cover to the display assembly.
2. Using a plastic scribe, pry the back cover starting from the edge of the monitor.
3. Carefully lift the display back cover and rotate it.
4. Disconnect the control board cable from the connector on the interface board.

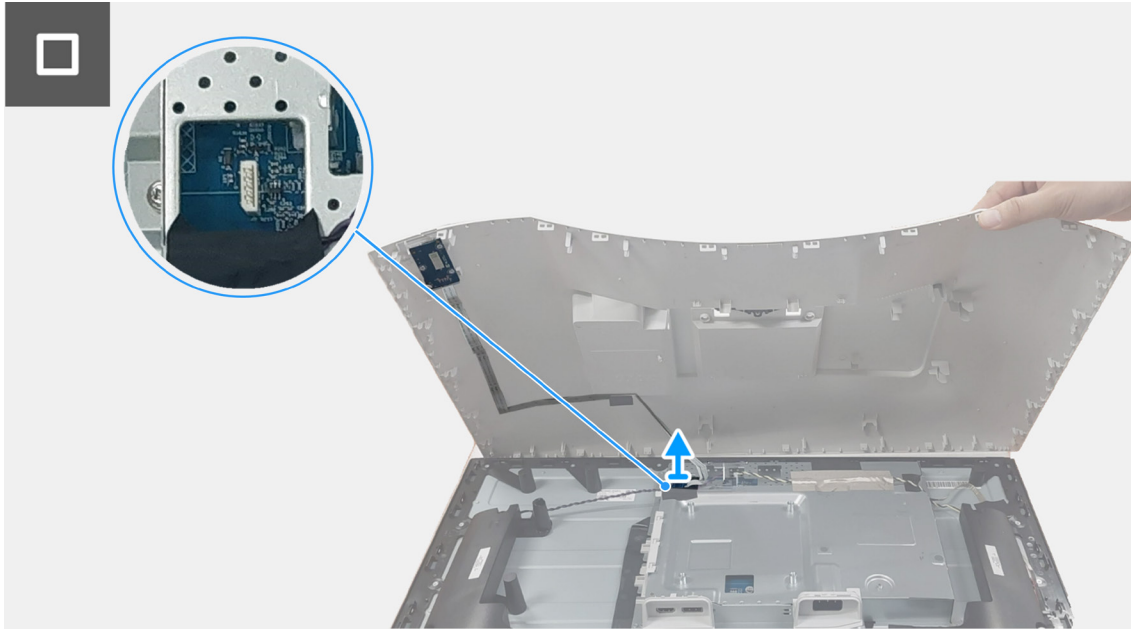


4x  
M4x10



**Figure 3.** Removing the back cover



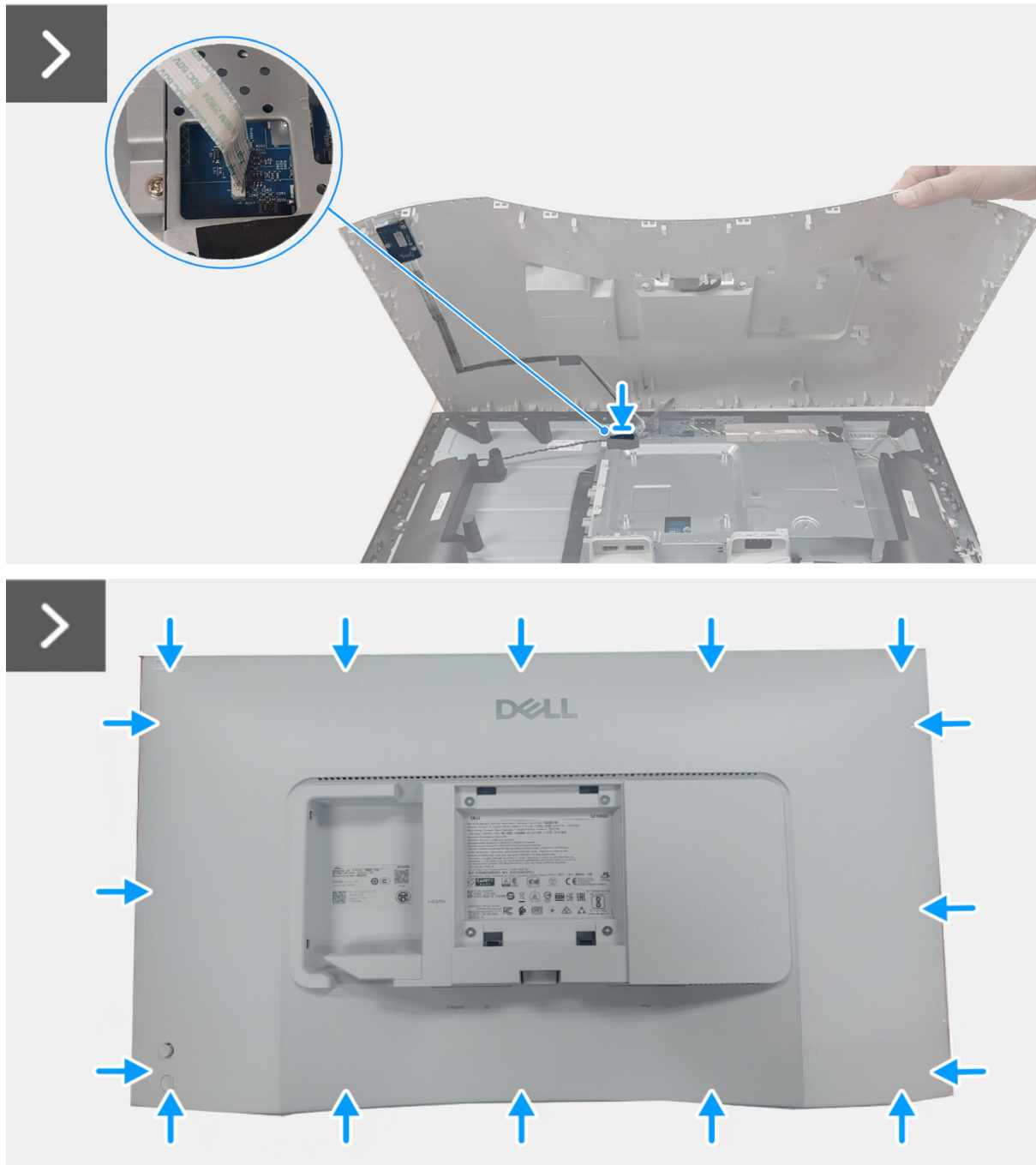


**Figure 4.** Removing the back cover

## Installing the back cover

### Steps

1. Connect the control board cable to the connector on the interface board.
2. Align the back cover with the display assembly and snap it into place.
- ① **NOTE:** Align the screw holes on the back cover with the screw holes on the display assembly before applying slight pressure to the back cover.
3. Replace the four screws (M4x10) that secure the back cover to the display assembly.



**Figure 5.** Installing the back cover



4x  
M4x10



**Figure 6.** Installing the back cover

**Next steps**

1. Install the [stand](#).
2. Follow the procedure in [After working inside your monitor](#).

# Interface board assembly

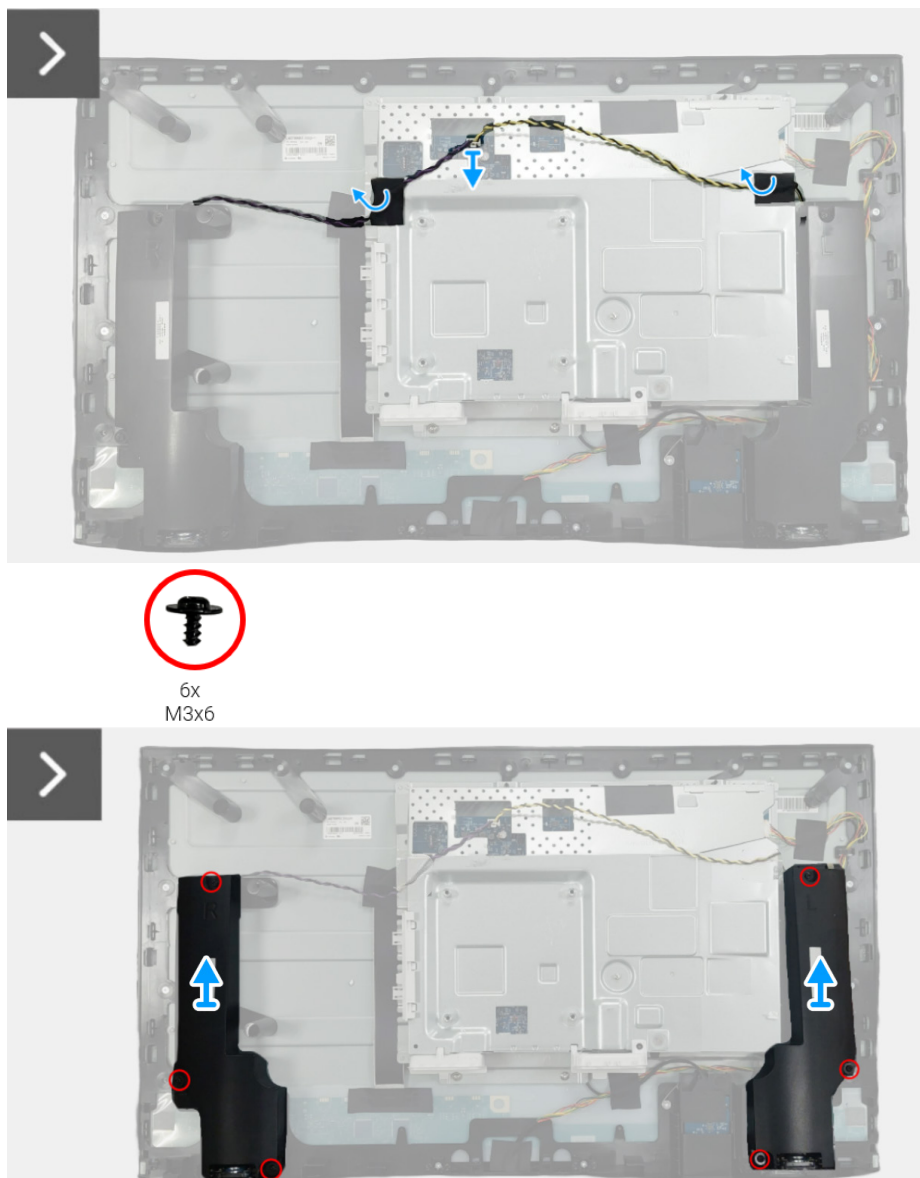
## Removing the interface board assembly

### Prerequisites

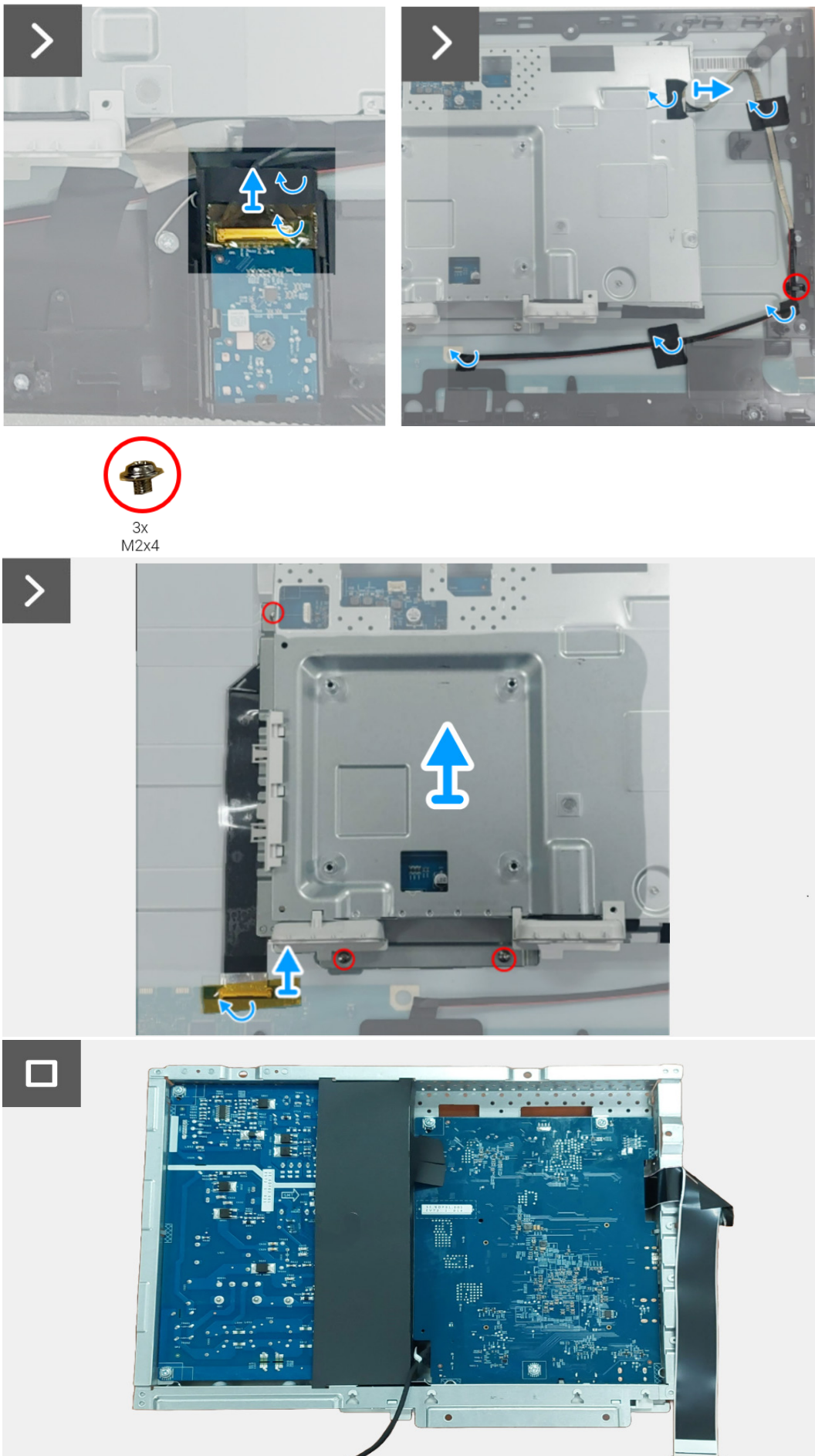
1. Follow the procedure in [Before working inside your monitor.](#)
2. Remove the [stand.](#)
3. Remove the [back cover.](#)

### Steps

1. Disconnect the speaker cable from the interface board.
2. Peel the tape that secure the speaker cable to the display panel.
3. Remove six screws (M3x6) that secure the speaker assembly to the middle frame.
4. Lift the speaker assembly and set it aside.
5. Peel the tape on the USB board and disconnect the USB board cable from the USB board.
6. Peel the tape on the backlight cable and disconnect the backlight cable from the power board.
7. Release the backlight cable from the routing guide on the middle frame.
8. Peel the tape that secures the LVDS cable connector to the display panel.
9. Open the latch and disconnect the LVDS cable from the connector on the display panel.
10. Remove three screws (M2x4) that secure the interface board assembly to the display panel.
11. Lift and remove the interface board assembly from the display panel.



**Figure 7.** Removing the interface board assembly



**Figure 8.** Removing the interface board assembly



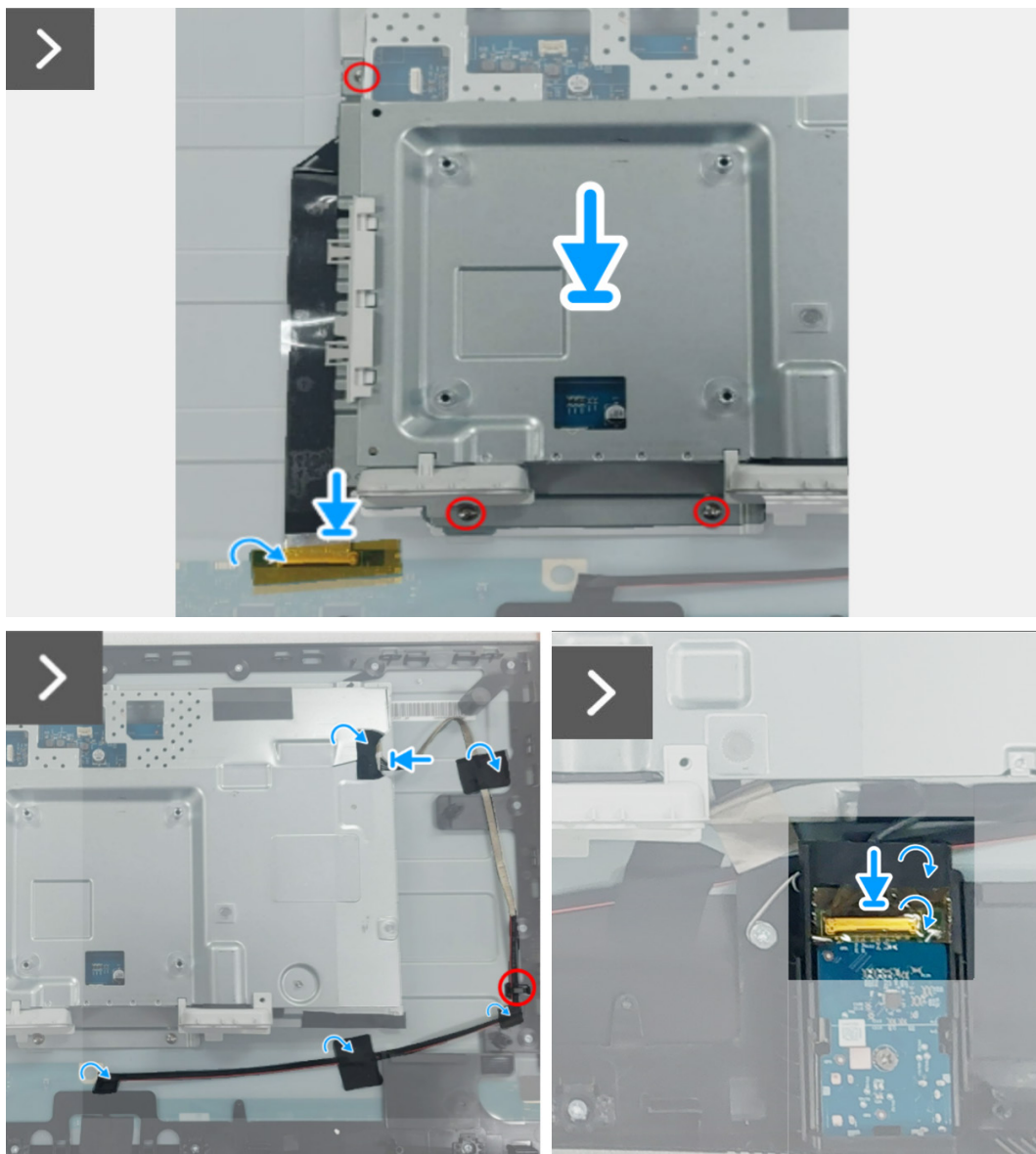
## Installing the interface board assembly

### Steps

1. Slide the LVDS cable into the connector on the display panel and close the latch to secure it in place.
2. Adhere the tape to secure the LVDS cable connector to the display panel.
3. Align and place the interface board assembly on the display panel.
4. Replace three screws (M2x4) that secure the interface board assembly to the display panel.
5. Connect the backlight cable to the connector on the power board.
6. Route the backlight cable through the routing guide on the middle frame.
7. Adhere the tape that secures the backlight cable to the display panel.
8. Connect the USB board cable to the USB board.
9. Adhere the tape that secures the USB board connector.
10. Place the speaker assembly on the middle frame.
11. Replace six screws (M3x6) that secure the speaker assembly to the middle frame.
12. Connect the speaker cable to the connector on the interface board.
13. Adhere the tape that secures the speaker cable to the display panel.



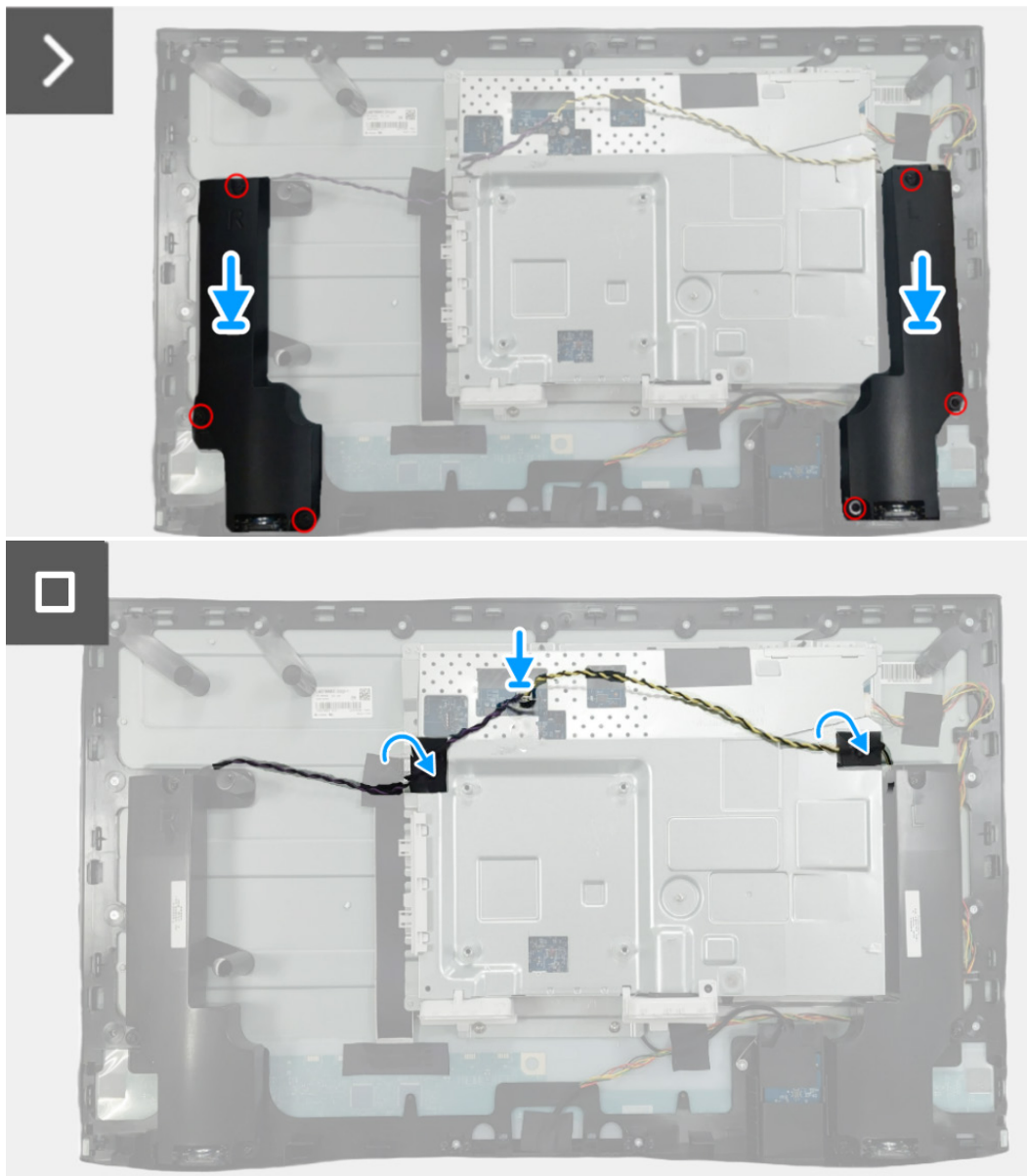
3x  
M2x4



**Figure 9.** Installing the interface board assembly



6x  
M3x6



**Figure 10.** Installing the interface board assembly

#### Next steps

1. Install the [back cover](#).
2. Install the [stand](#).
3. Follow the procedure in [After working inside your monitor](#).

# Interface board

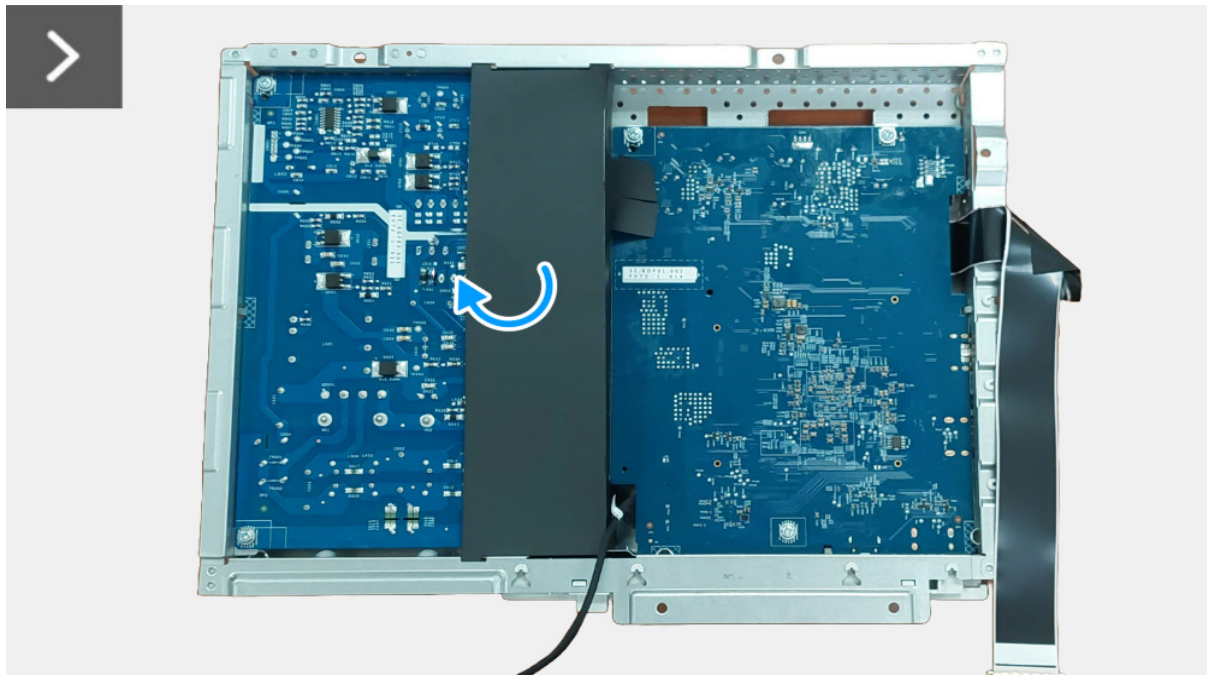
## Removing the interface board

### Prerequisites

1. Follow the procedure in [Before working inside your monitor](#).
2. Remove the [stand](#).
3. Remove the [back cover](#).
4. Remove the [interface board assembly](#).

### Steps

1. Peel the mylar from the interface board assembly.
2. Remove seven screws (M3x9) that secure the interface board and the power board to the bracket.
3. Remove the interface board and power board from the bracket.
4. Disconnect the power cable, LVDS cable, and USB board cable from the connectors on the interface board.



**Figure 11.** Removing the interface board





7x  
M3x9

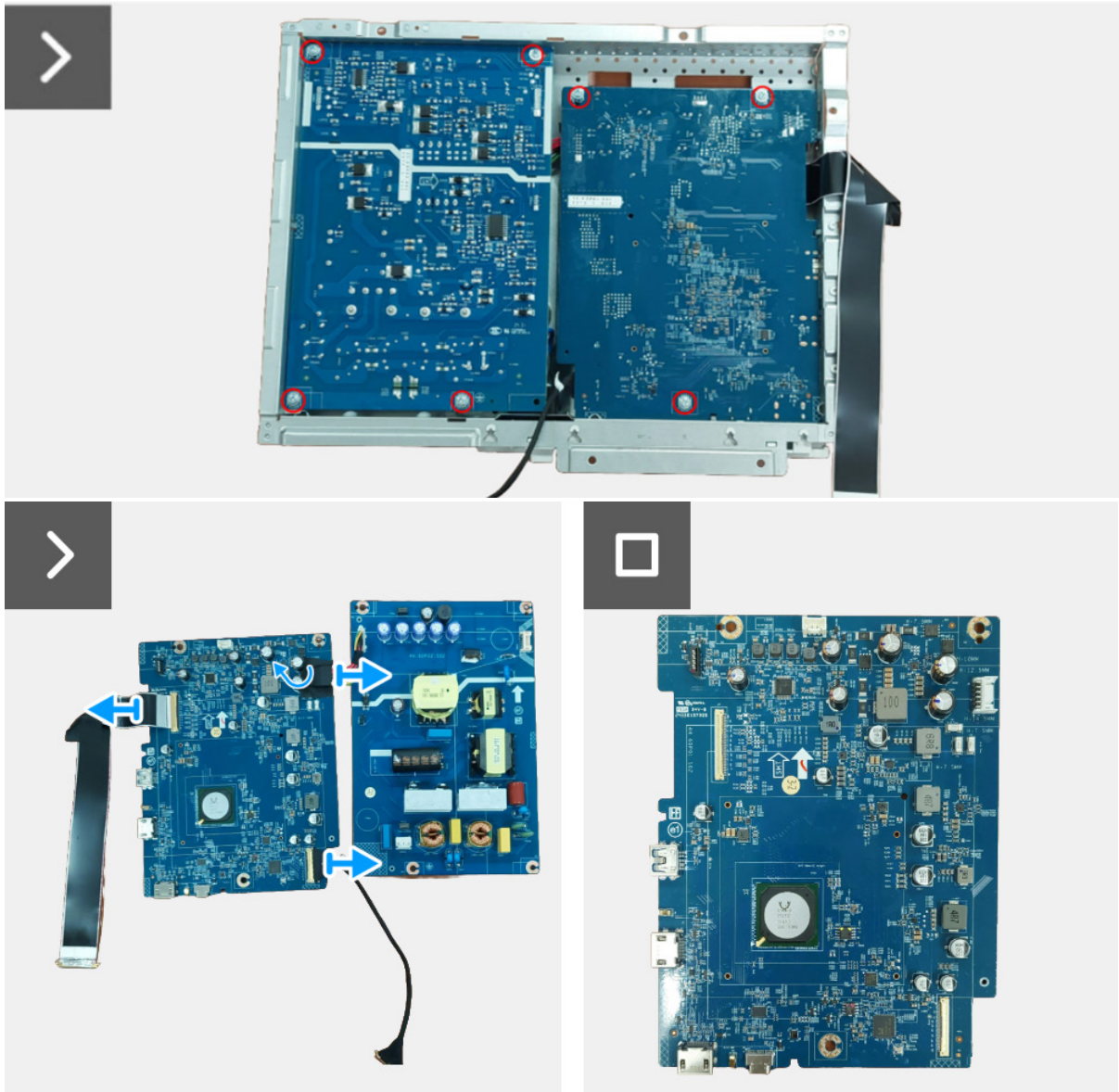
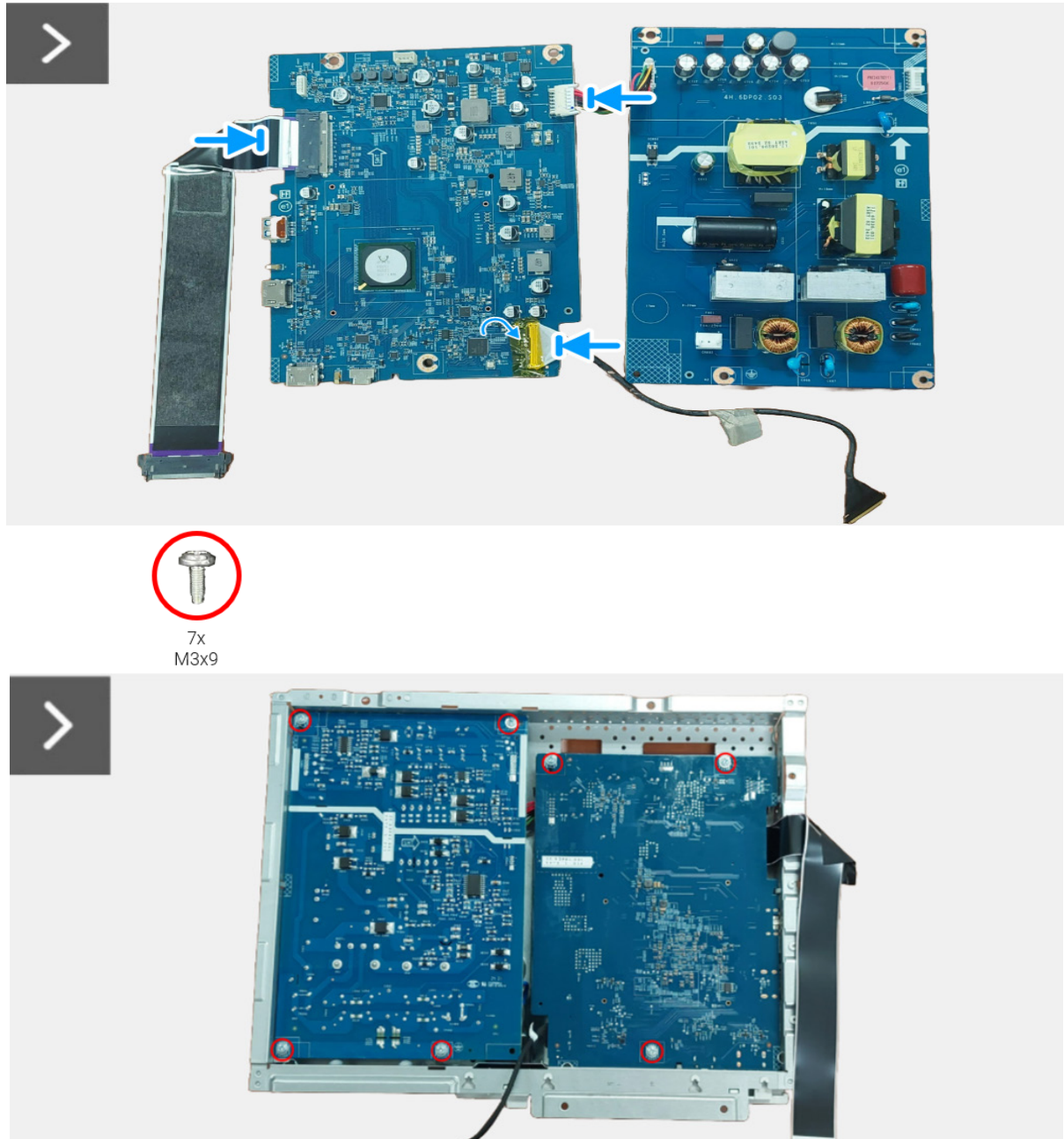


Figure 12. Removing the interface board

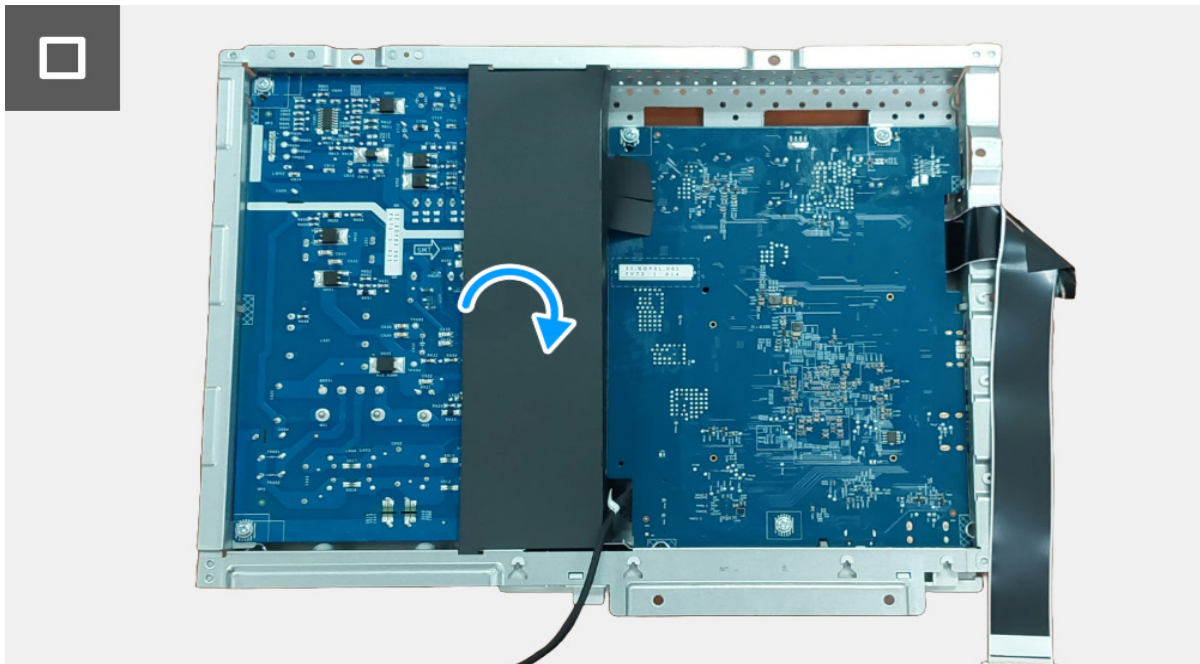
## Installing the interface board

### Steps

1. Connect the power cable, LVDS cable, and USB board cable to the connectors on the interface board.
2. Align and place the power board and interface board to the bracket.
3. Replace the seven screws (M3x9) that secure the power board and interface board to the bracket.
4. Adhere the mylar to the interface board assembly.



**Figure 13.** Installing the interface board



**Figure 14.** Installing the interface board

**Next steps**

1. Install the [interface board assembly](#).
2. Install the [back cover](#).
3. Install the [stand](#).
4. Follow the procedure in [After working inside your monitor](#).

# Power board

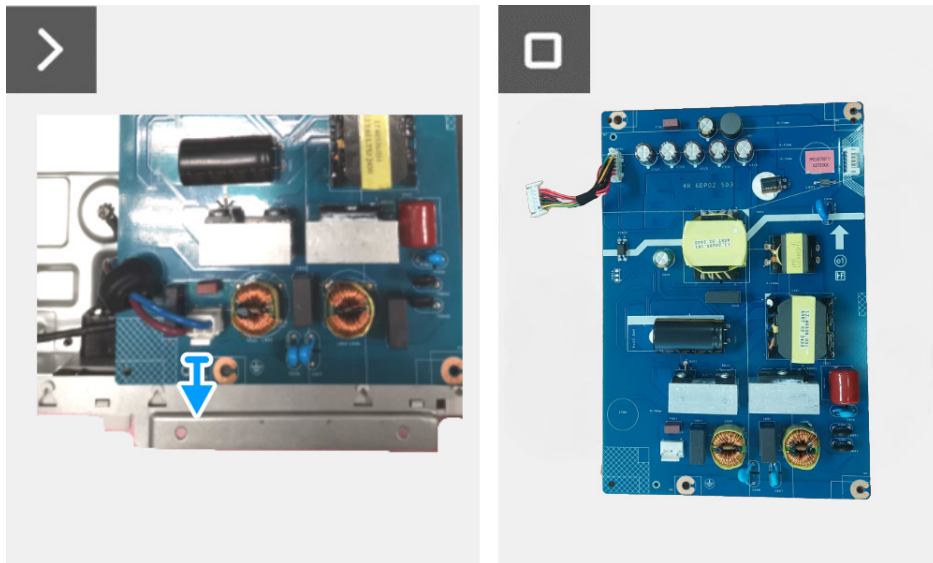
## Removing the power board

### Prerequisites

1. Follow the procedure in [Before working inside your monitor](#).
2. Remove the [stand](#).
3. Remove the [back cover](#).
4. Remove the [interface board assembly](#).
5. Remove the [interface board](#).

### Steps

1. Disconnect the AC socket cable from the connector on the power board.

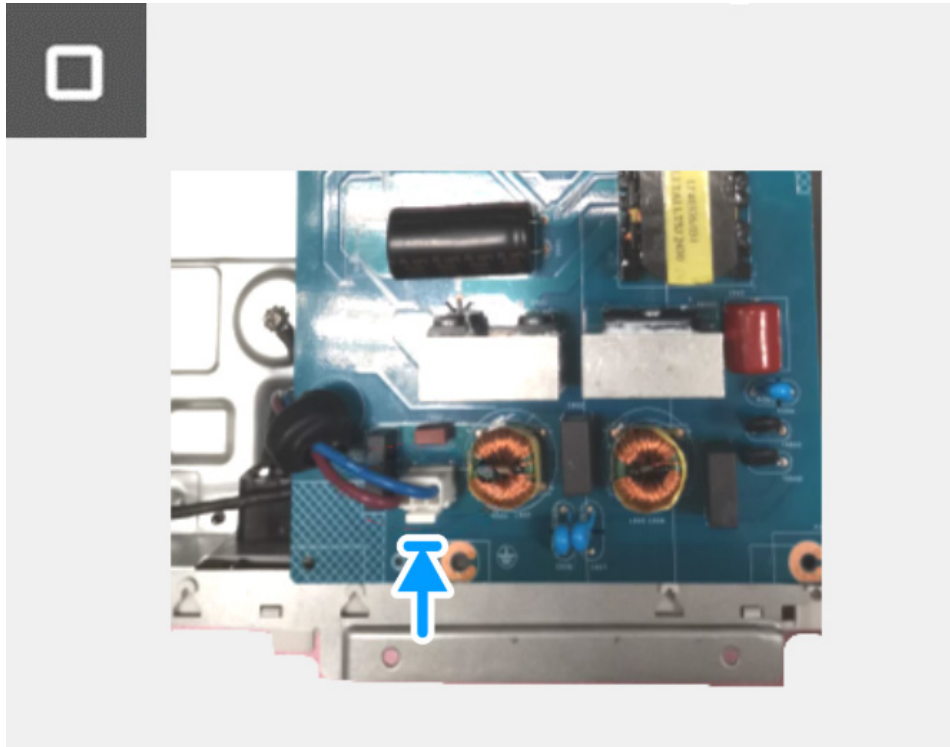


**Figure 15.** Removing the power board

## Installing the power board

### Steps

1. Connect the AC socket cable to the connector on the power board.



**Figure 16.** Installing the power board

### Next steps

2. Install the [interface board](#).
3. Install the [interface board assembly](#).
4. Install the [back cover](#).
5. Install the [stand](#).
6. Follow the procedure in [After working inside your monitor](#).

# Contacting Dell

To contact Dell for sales, technical support, or customer service issues, see [www.dell.com/contactdell](http://www.dell.com/contactdell).

- ① **NOTE:** Availability varies by country and product, and some services may not be available in your country.
- ① **NOTE:** If you do not have an active internet connection, you can find contact information about your purchase invoice, packing slip, bill, or Dell product catalog.