

Dell 34 Plus 4K Monitor

S3425DW

Teardown Instructions

Notes, cautions, and warnings

 **NOTE:** A NOTE indicates important information that helps you make better use of your product.

 **CAUTION:** A CAUTION indicates either potential damage to hardware or loss of data and tells you how to avoid the problem.

 **WARNING:** A WARNING indicates a potential for property damage, personal injury, or death.

Contents

Safety instructions	5
Before working inside your monitor	5
After working inside your monitor	5
Disassembly and reassembly	6
Recommended tools	6
Screw list	6
Stand	8
Removing the stand	8
Installing the stand	8
Back cover	10
Removing the back cover	10
Installing the back cover	12
Speaker	14
Removing the speaker	14
Installing the speaker	16
Metal shield	18
Removing the metal shield	18
Installing the metal shield	20
System board and power board	22
Removing the system board and power board	22
Installing the system board and power board	24
Middle frame	27
Removing the middle frame	27
Installing the middle frame	28
Lens board	29
Removing the Lens board	29
Installing the Lens board	30
USB board	30
Removing the USB board	30
Installing the USB board	32
Keypad board	33
Removing the keypad board	33
Installing the keypad board	34
Regulatory information	35
FCC notices (U.S. Only) and other regulatory information	35
EU product database for energy label and product information sheet	35
Contacting Dell	36

Safety instructions

Use the following safety guidelines to protect your monitor from potential damage and to ensure your personal safety. Unless otherwise noted, each procedure included in this document assumes that you have read the safety information that is shipped with your monitor.

① **NOTE:** Before using the monitor, read the safety information that is shipped with your monitor and printed on the product. Keep the documentation at a secure location for future reference.

⚠ **WARNING:** Use of controls, adjustments, or procedures other than those specified in this documentation may result in exposure to shock, electrical hazards and/or mechanical hazards.

⚠ **CAUTION:** The possible long-term effect of listening to audio at high volume through the headphones (on a monitor that supports it) may damage your hearing ability.

- Place the monitor on a solid surface and handle it carefully.
 - The screen is fragile and can be damaged if dropped or press with a sharp object.
 - Ensure that your monitor is electrically rated to operate with the AC power available in your location.
 - Keep the monitor in room temperature. Excessive cold or hot conditions can have an adverse effect on the liquid crystal of the display.
 - Connect the power cable from the monitor to a wall outlet that is near and accessible. See [Connecting the cables](#).
- Do not place and use the monitor on a wet surface or near water.
- Do not subject the monitor to severe vibration or high impact conditions. For example, do not place the monitor inside a car trunk.
- Unplug the monitor when it is going to be left unused for an extended period.
- To avoid electric shock, do not attempt to remove any cover or touch the inside of the monitor.
- Read these instructions carefully. Keep this document for future reference. Follow all warnings and instructions marked on the product.
- Certain monitors can be wall mounted using the VESA mount that is sold separately. Ensure to use the correct VESA specifications as mentioned in the wall mounting section of the User's Guide.

For information about safety instructions, see the Safety, Environmental, and Regulatory Information (SERI) document that is shipped with your monitor.

Before working inside your monitor

Steps

1. Save and close all open files and exit all open applications.
2. Turn off your monitor.
3. Disconnect your monitor and all attached devices from their electrical outlets.
4. Disconnect all attached network devices and peripherals, such as keyboard, mouse, and dock from your monitor.
- ⚠ **CAUTION:** To disconnect a network cable, first unplug the cable from your monitor and then unplug the cable from the network device.
5. Remove any media card and optical disc from your monitor, if applicable.

After working inside your monitor

⚠ **CAUTION:** Leaving stray or loose screws inside your monitor may severely damage your monitor.

Steps

1. Replace all screws and ensure that no stray screws remain inside your monitor.
2. Connect any external devices, peripherals, or cables you removed before working on your monitor.
3. Replace any media cards, discs, or any other parts that you removed before working on your monitor.
4. Connect your monitor and all attached devices to their electrical outlets.
5. Turn on your monitor.

Disassembly and reassembly

CAUTION: The information in this section is intended for authorized service technicians in the EMEA region. Dell prohibits users from disassembling the monitor, and any damage caused by unauthorized servicing will not be covered under the warranty.

Recommended tools











The procedures in this document may require the following tools:




- Screwdriver (Phillips-head, Hexagonal head)
- Plastic scribe

Screw list

- NOTE:** When removing screws from a component, it is recommended to note the screw type, the quantity of screws, and then place them in a screw storage box. This is to ensure that the correct number of screws and correct screw type is restored when the component is replaced.
- NOTE:** Some computers have magnetic surfaces. Ensure that the screws are not left attached to such surfaces when replacing a component.
- NOTE:** Screw color may vary with the configuration ordered.

Table 1. Screw list.

Component	Screw types	Quantity	Screw images
Back cover	M4x10	4	
Speaker	M3x6	6	
Metal shield	M3x4	6	
System board	D3x6	4	
Power board	D3x6	4	
	M4x6	1	
Converter board	D3x6	4	
Middle frame	M3x4	20	
Front trim	M2x2	7	
Lens board	Q2x2.5	1	

Component	Screw types	Quantity	Screw images
USB board	M3x6	2	
	M3x4	1	
Keypad board	Q2x2.5	3	

Stand

Removing the stand

Prerequisites

1. Follow the procedure in [Before working inside your monitor](#).

About the task

The following image indicates the location of the stand and provides a visual representation of the removal procedure.

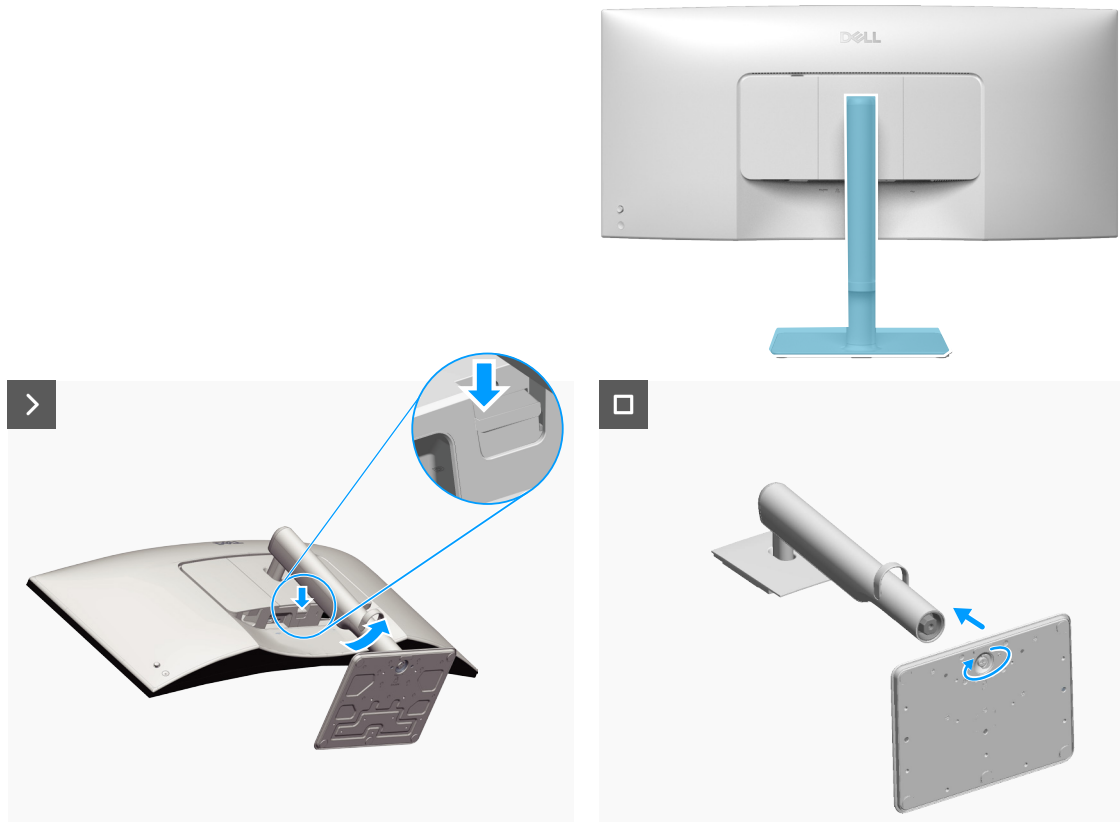


Figure 1. Removing the stand

Steps

1. Place the monitor on a clean, flat surface on a soft cloth or cushion.
2. Press the release button and pull the stand assembly away from the monitor.
3. Open the screw handle at the bottom of the stand base and turn it anti-clockwise to unlock the riser from the base.
4. Detach the stand riser from the stand base.

Installing the stand

Prerequisites

If you are replacing a component, remove the existing component before performing the installation procedure.

About this task

The following image indicates the location of the stand and provides a visual representation of the installation procedure.

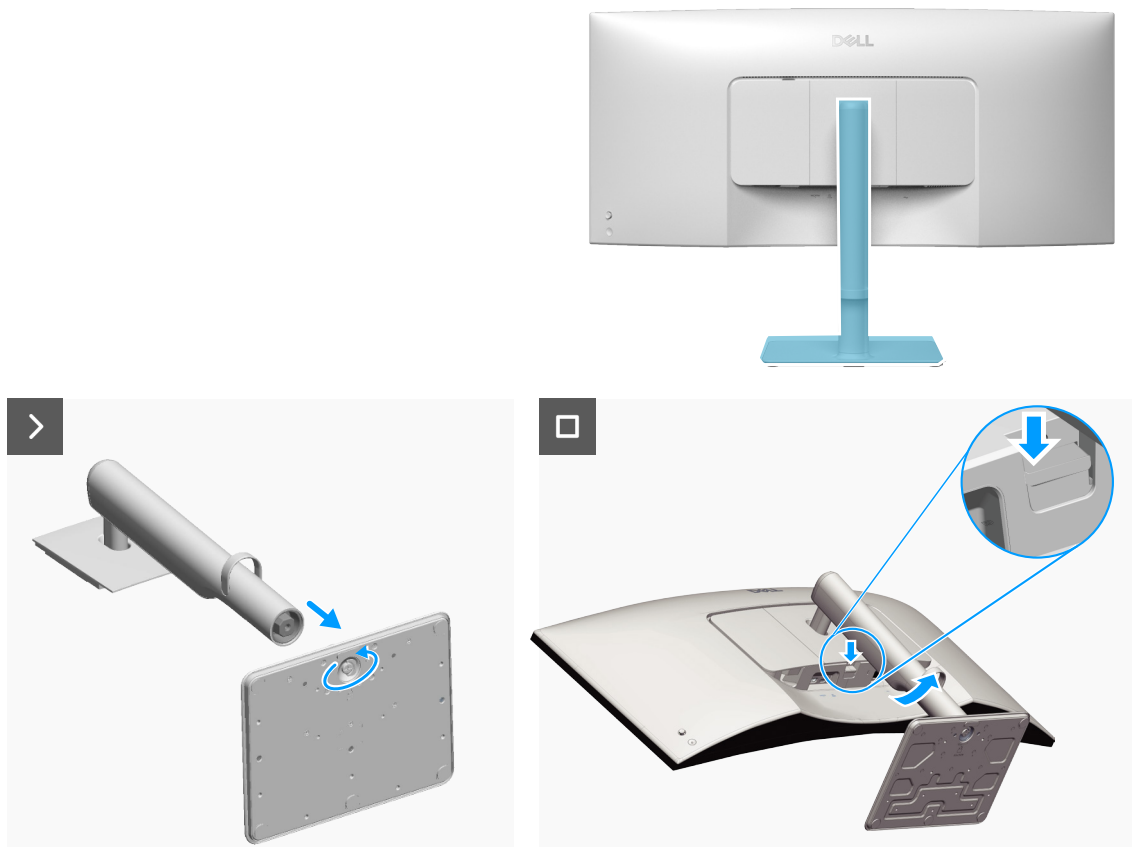


Figure 2. Installing the stand

Steps

1. Align and insert the stand riser into the stand base until it snaps into place.
2. Open the screw handle at the bottom of the stand base and turn it clockwise to secure the stand assembly.
3. Close the screw handle.
4. Align the stand-riser bracket with the grooves at the back of the monitor.
5. Slide and gently press the stand assembly until it snaps into place.

Next steps

1. Follow the procedure in [After working inside your monitor.](#)

Back cover

Removing the back cover

Prerequisites

1. Follow the procedure in [Before working inside your monitor](#).
2. Remove the [stand](#).

About the task

The following image indicates the location of the back cover and provides a visual representation of the removal procedure.

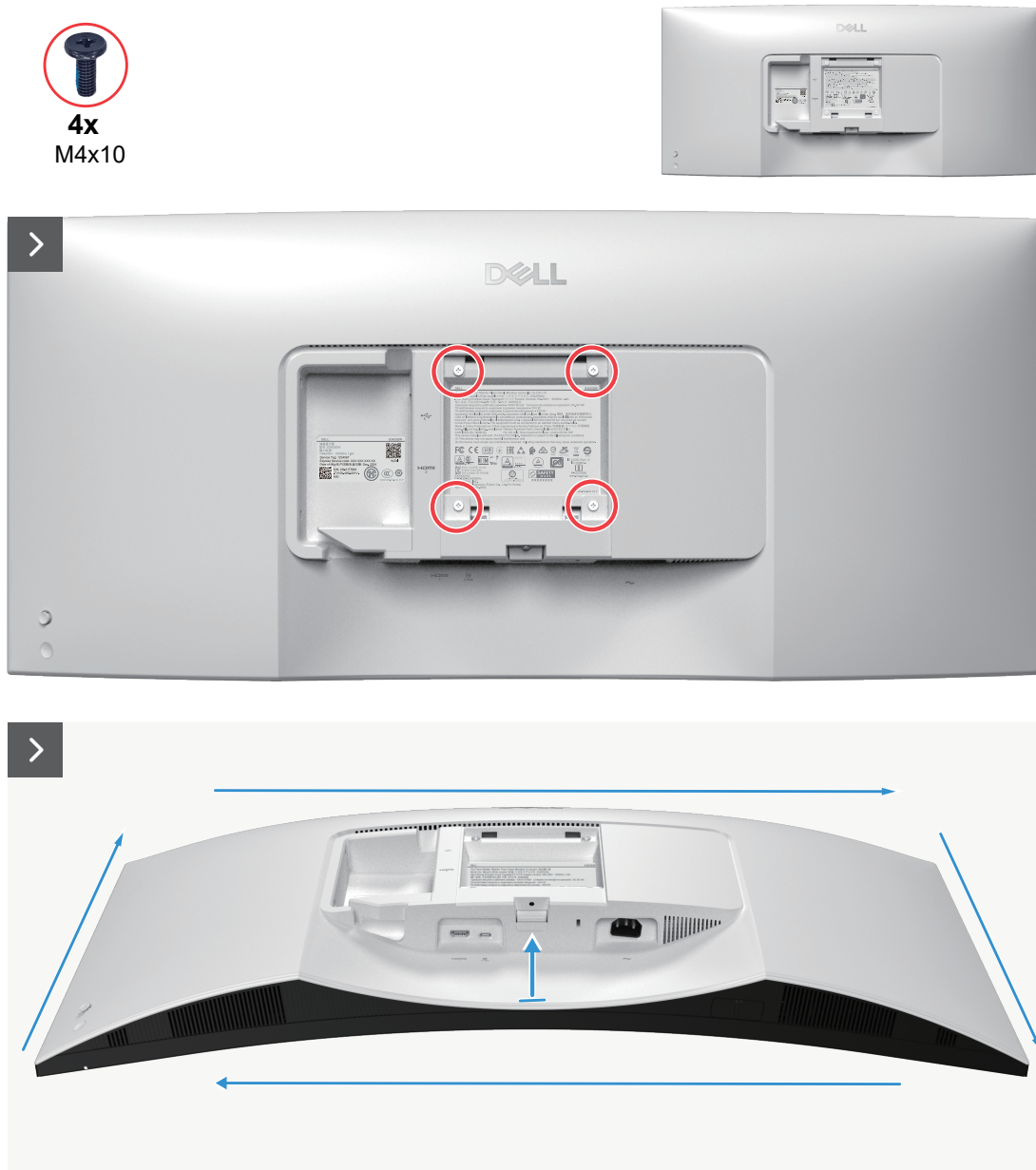


Figure 3. Removing the screws and prying the back cover

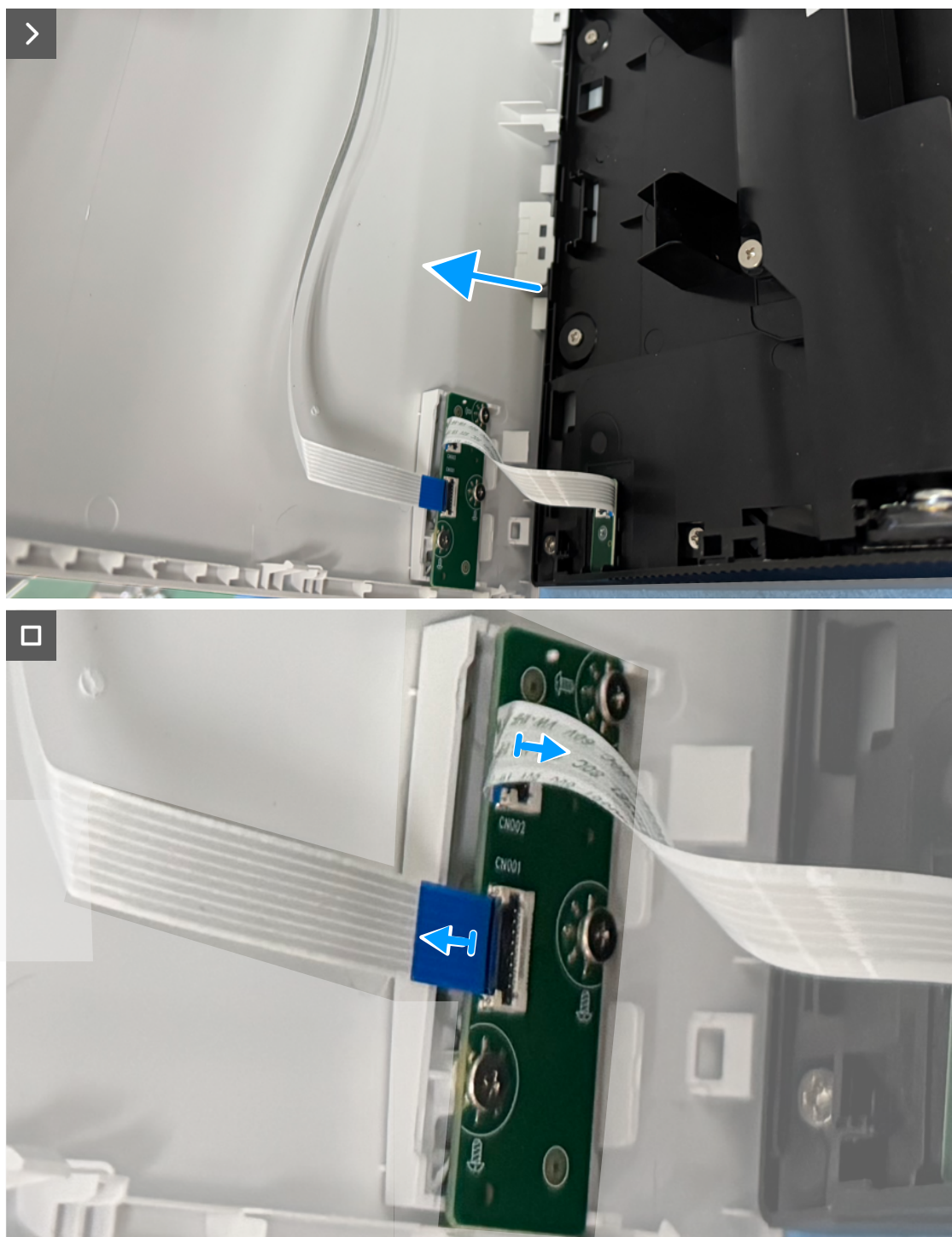


Figure 4. Disconnect the keypad board and Lens board cables

Steps

1. Remove the four screws (M4x10) that secure the back cover to the chassis.
2. Using a plastic scribe, pry the back cover starting from the bottom edge of the monitor.
3. Lift the back cover partially from the right side and disconnect the keypad board cable and Lens board cable from the connectors on the keypad board.

Installing the back cover

Prerequisites

If you are replacing a component, remove the existing component before performing the installation procedure.

About this task

The following image indicates the location of the back cover and provides a visual representation of the installation procedure.

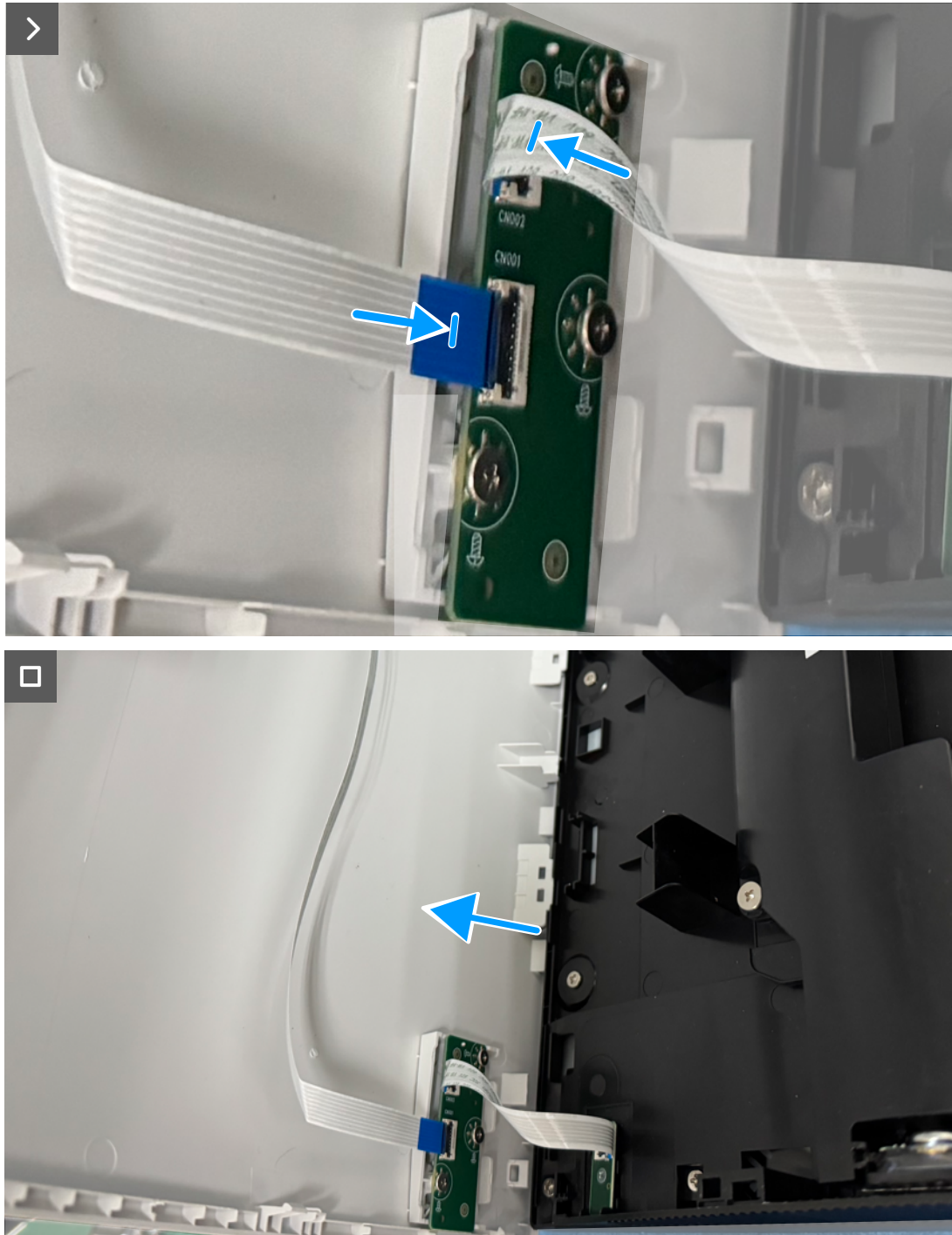


Figure 5. Connect the keypad board and Lens board cables



Figure 6. Replace the screws

Steps

1. Connect the keypad board cable and Lens board cable to the connectors on the keypad board.
2. Align the screw holes on the back cover with the screw holes on the monitor, and gently press along the sides to snap the back cover into place.
3. Replace the four screws (M4x10) to secure the back cover to the chassis.

Next steps

1. Install the [stand](#).
2. Follow the procedure in [After working inside your monitor](#).

Speaker

Removing the speaker

Prerequisites

1. Follow the procedure in [Before working inside your monitor.](#)
2. Remove the [stand.](#)
3. Remove the [back cover.](#)

About the task

The following image indicates the location of the speaker and provides a visual representation of the removal procedure.

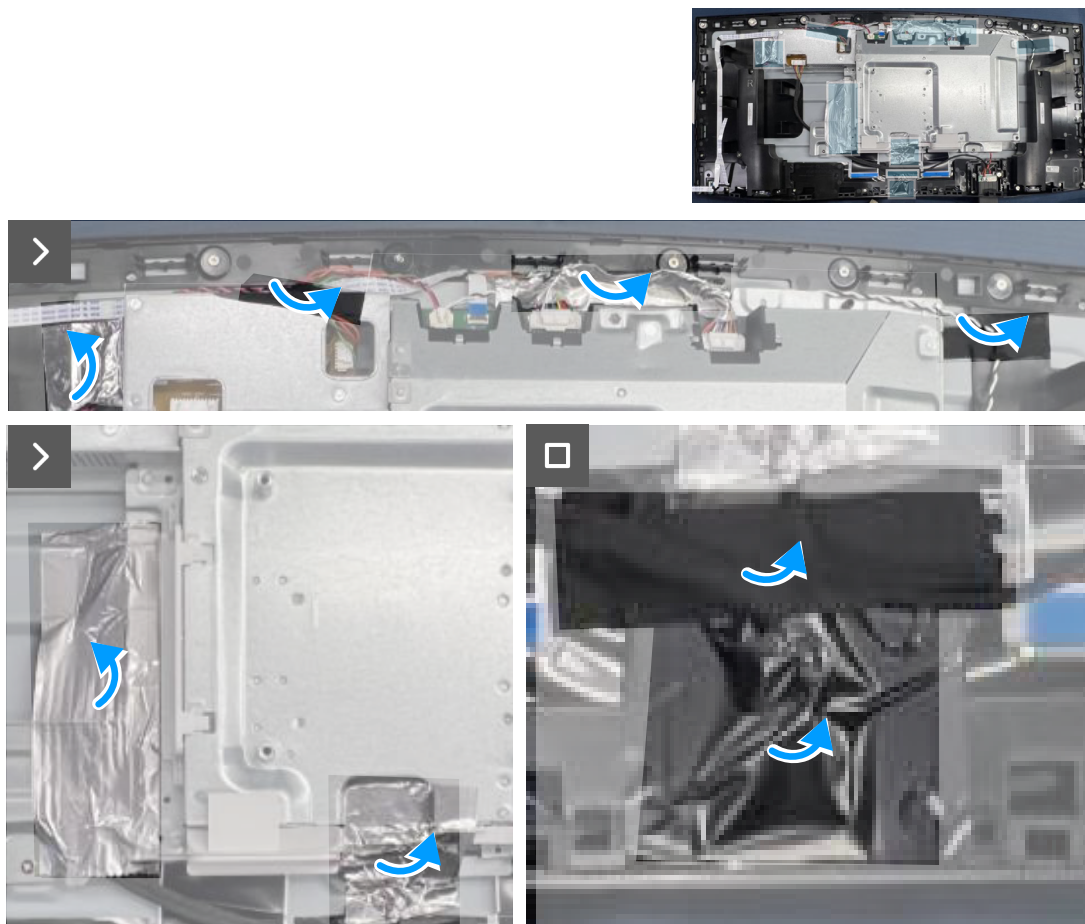


Figure 7. Peel the tapes to secure the cables and metal shield



6x
M3x6

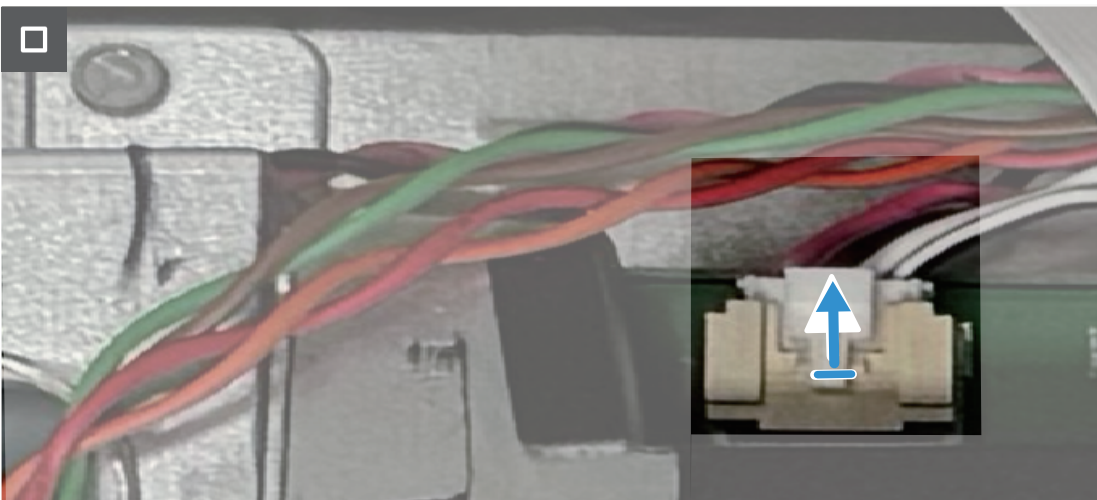
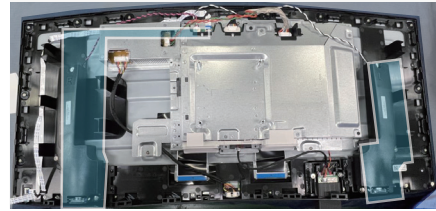


Figure 8. Removing the screws and disconnect the speaker cable

Steps

1. Peel back the tapes that secure the cables and metal shield to the display panel.
2. Remove the six screws (M3x6) that secure the speakers to the middle frame.
3. Disconnect the speaker cable from the connector on the system board.
4. Lift the speakers away from the monitor.

Installing the speaker

Prerequisites

If you are replacing a component, remove the existing component before performing the installation procedure.

About this task

The following image indicates the location of the speaker and provides a visual representation of the installation procedure.

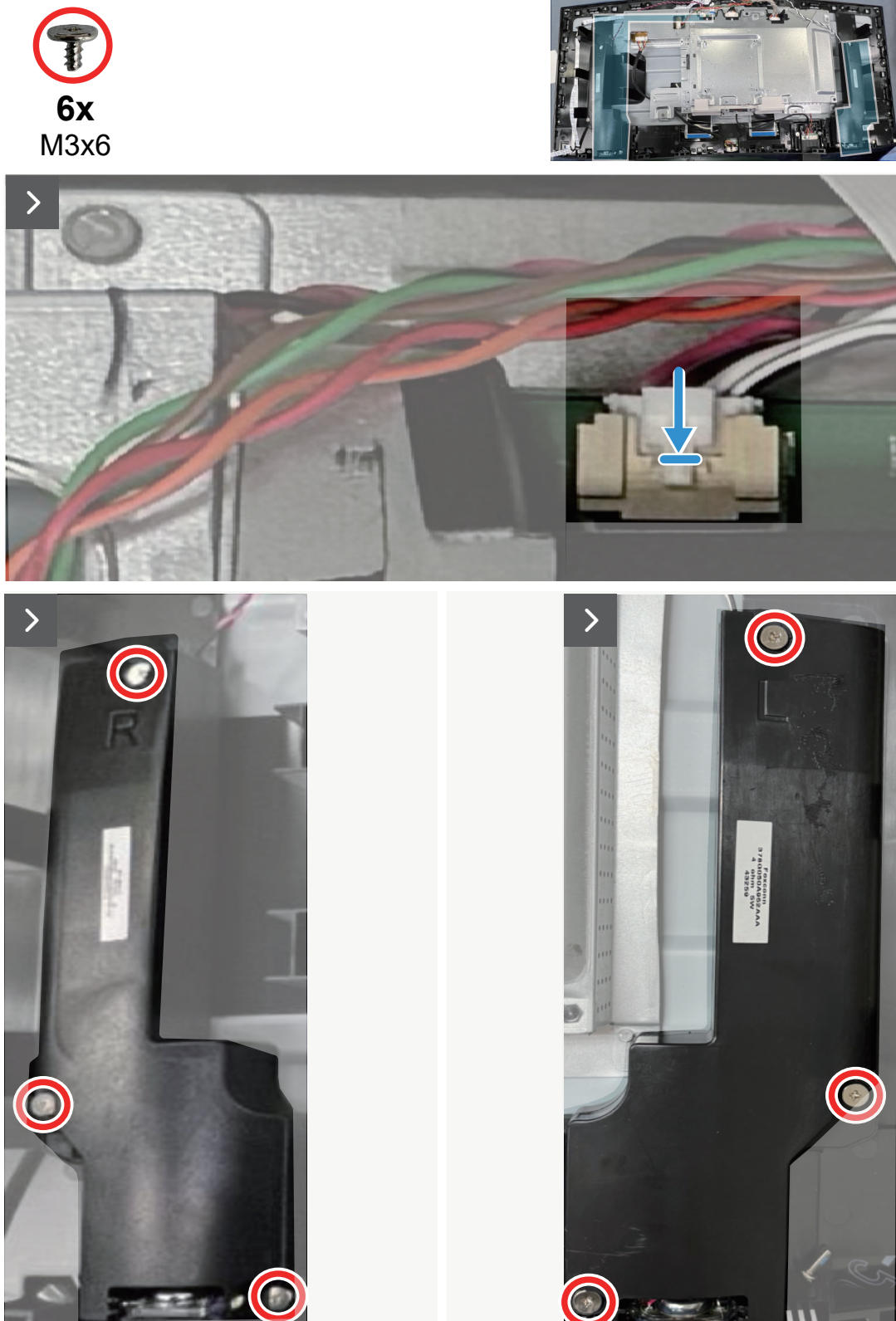


Figure 9. Connect the speaker cable and installing the screws

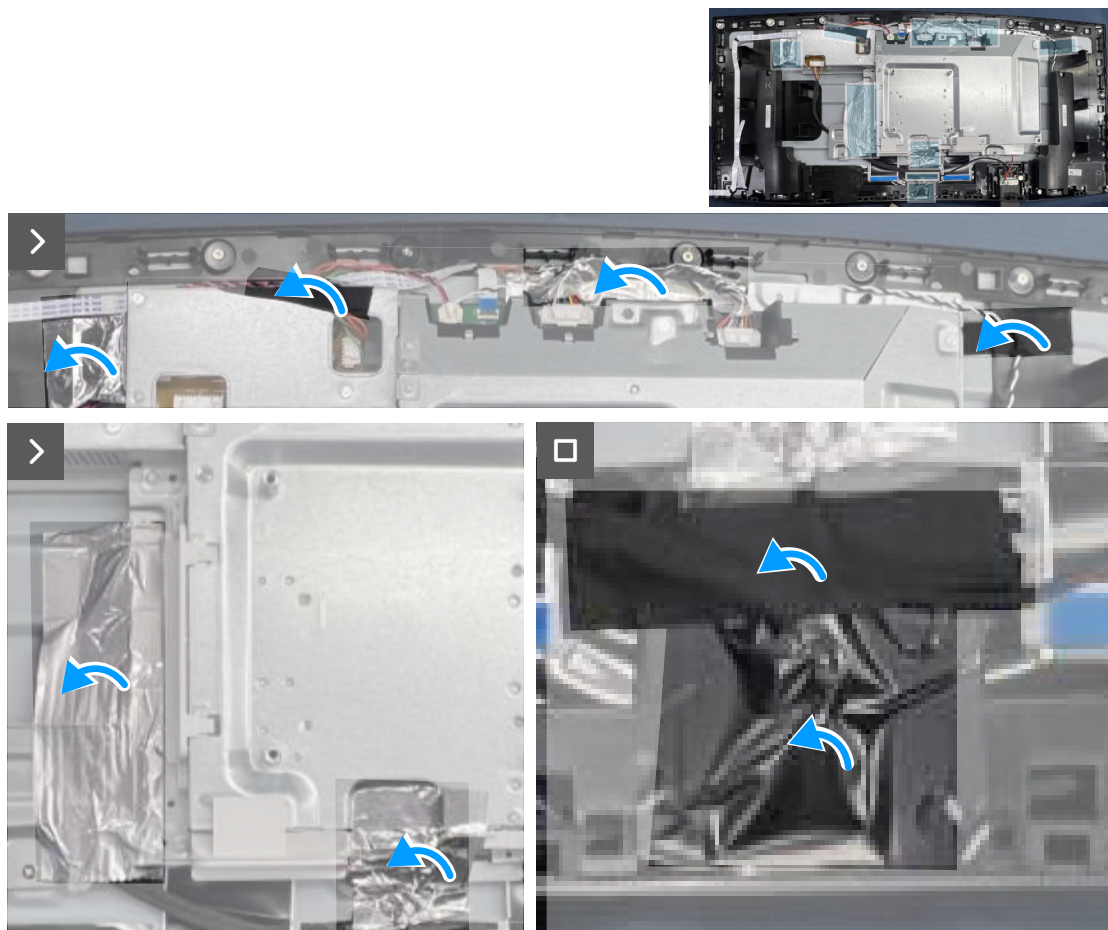


Figure 10. Adhere the tapes to secure the cables and metal shield

Steps

1. Align and place the speakers in the slots on the chassis.
2. Connect the speaker cable to the connector on the system board.
3. Align the screw holes on the speakers with the screw holes on the middle frame.
4. Replace the six screws (M3x6) to secure the speakers to the middle frame.
5. Adhere the tapes to secure the cables and metal shield to the display panel.

Next steps

1. Install the [back cover](#).
2. Install the [stand](#).
3. Follow the procedure in [After working inside your monitor](#).

Metal shield

Removing the metal shield

Prerequisites

1. Follow the procedure in [Before working inside your monitor.](#)
2. Remove the [stand](#).
3. Remove the [back cover](#).
4. Remove the [speaker](#).

About the task

The following image indicates the location of the metal shield and provides a visual representation of the removal procedure.

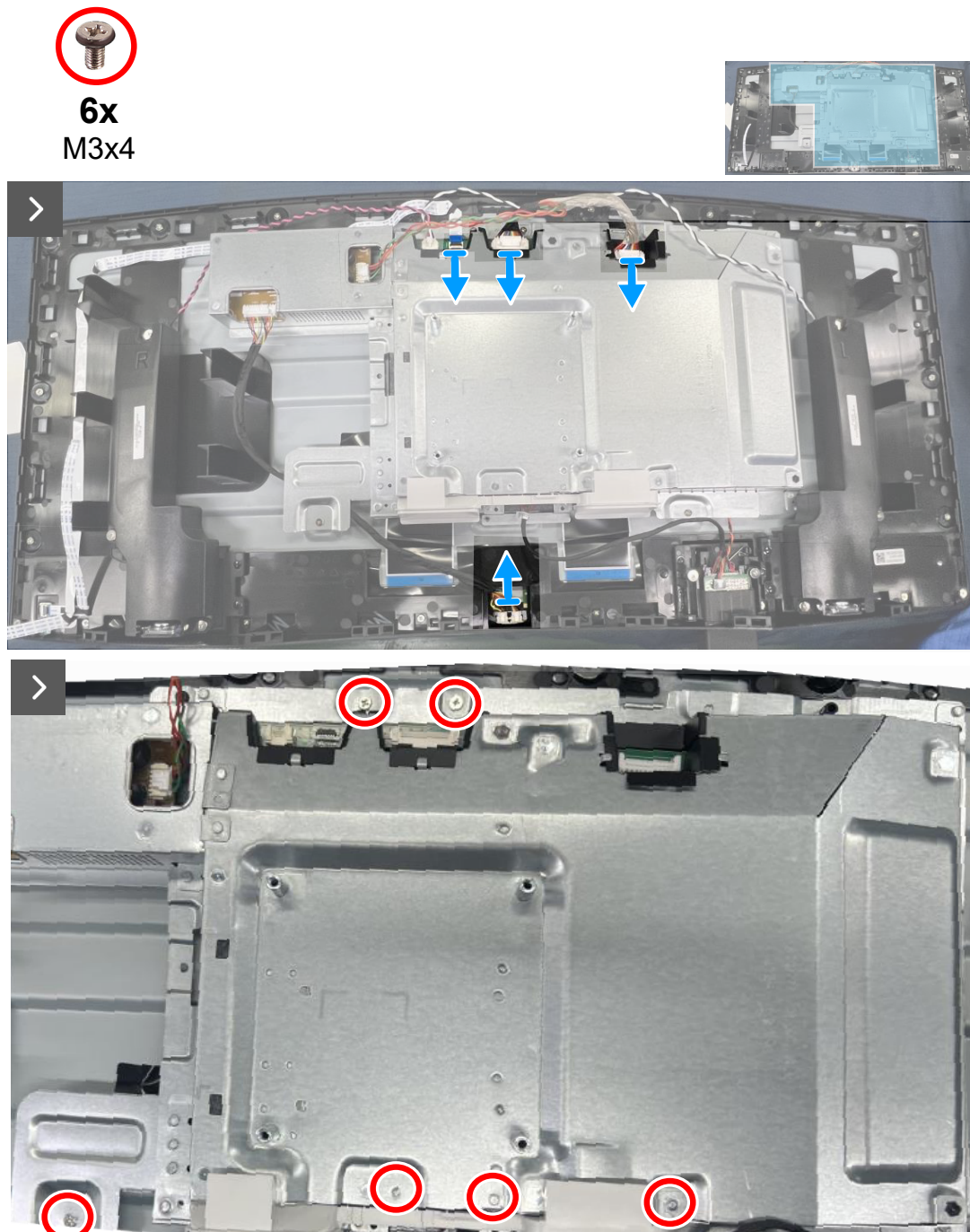


Figure 11. Disconnect the cables and remove the screws

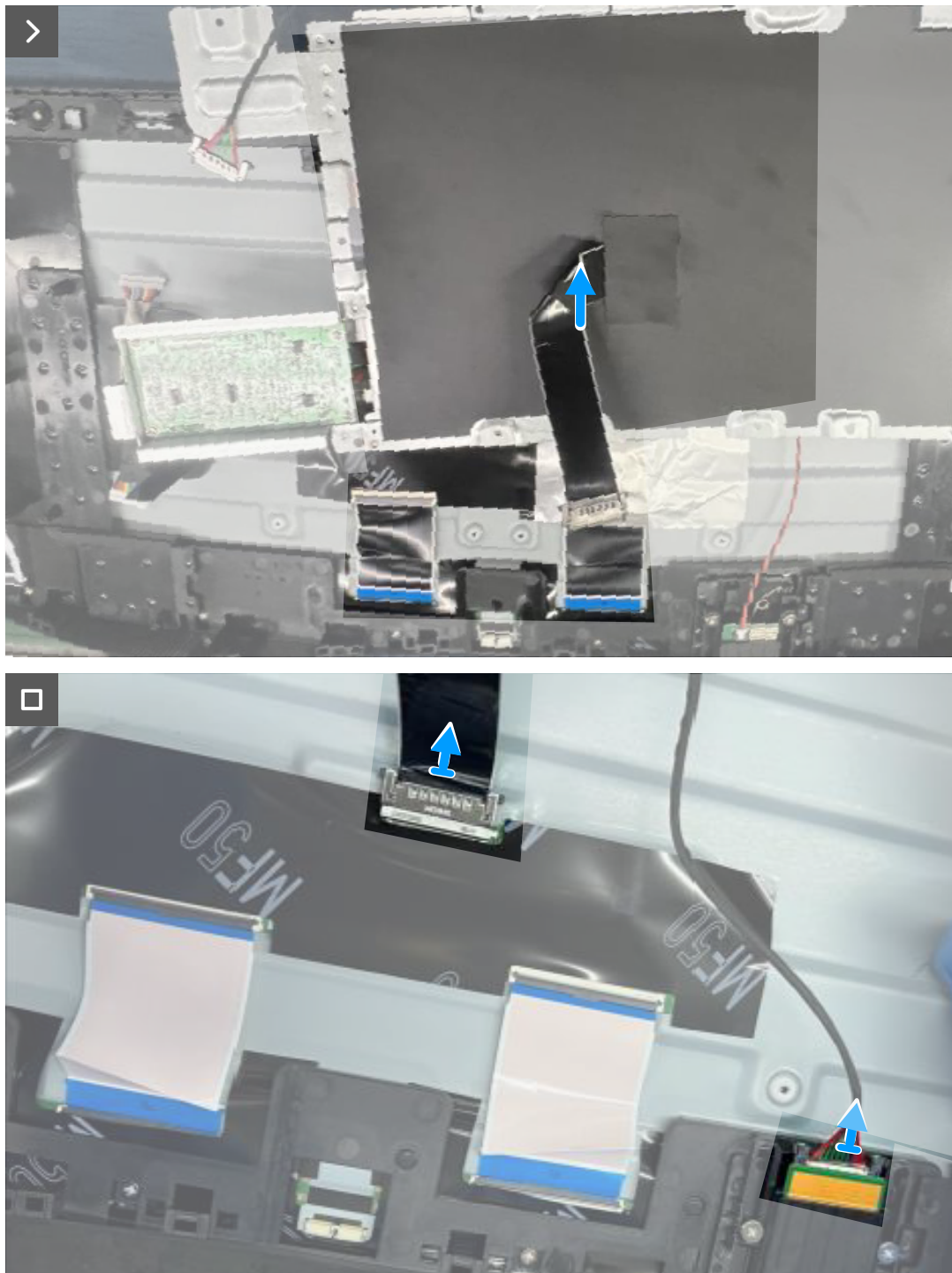


Figure 12. Disconnecting the display cables

Steps

1. Disconnect the keypad board cable, system board cable, power board cable, and lightbar cable from the connectors on the system board and the display panel.
2. Remove the six screws (M3x4) that secure the metal shield to the middle frame.
3. Lift the metal shield partially and disconnect the display cable from the connector on the display panel.

Installing the metal shield

Prerequisites

If you are replacing a component, remove the existing component before performing the installation procedure.

About this task

The following image indicates the location of the metal shield and provides a visual representation of the installation procedure.

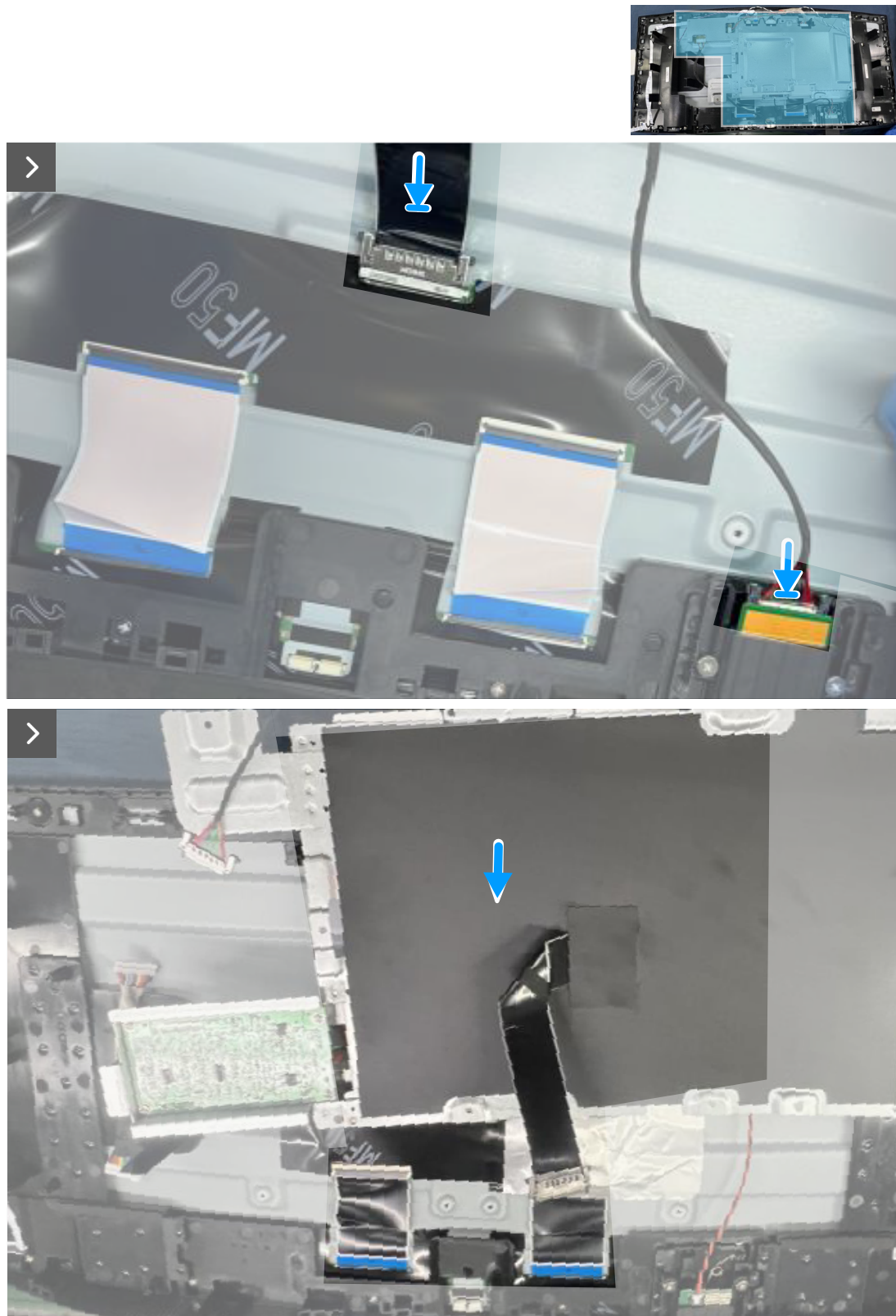


Figure 13. Connecting the display cables



6x
M3x4

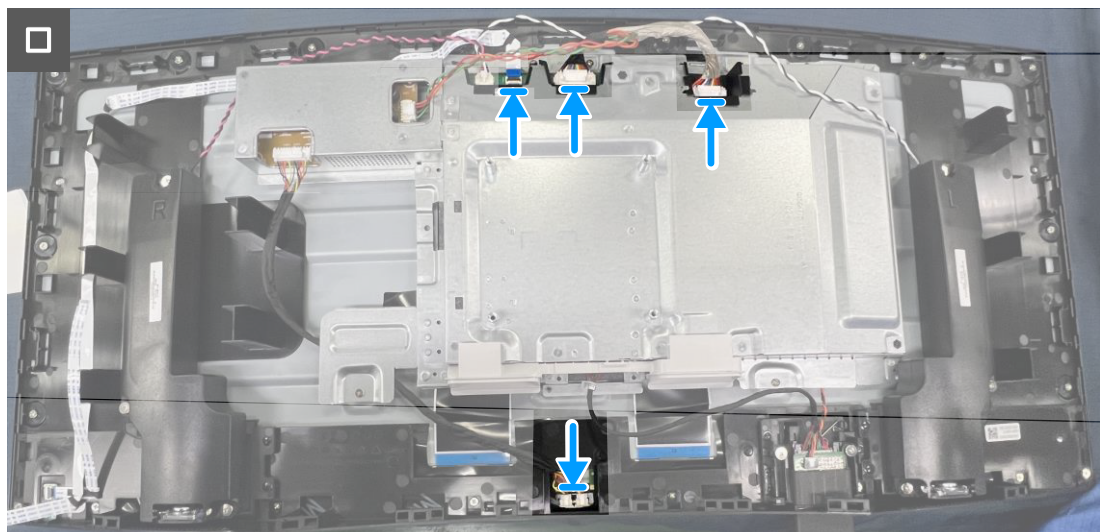
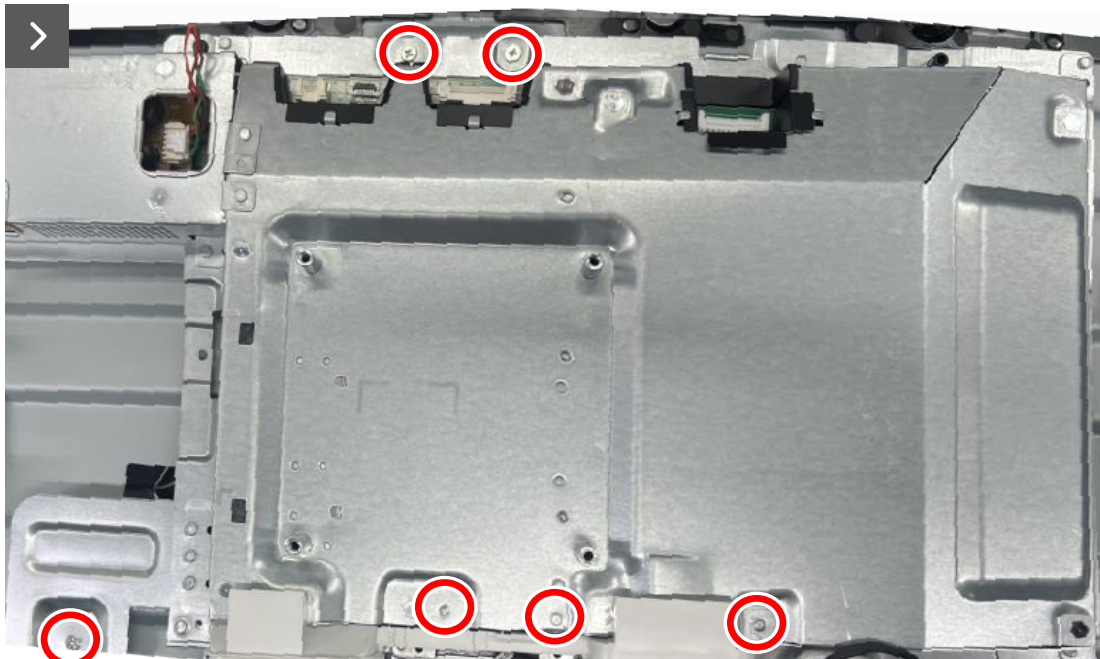


Figure 14. Replacing the screws and disconnecting the cables

Steps

1. Connect the display cables to the connectors on the display panel and lay down the metal shield.
2. Align the screw holes of the metal shield to the screw holes on the display panel.
3. Replace the six screws (M3x4) to secure the metal shield to the display panel.
4. Connect the keypad board cable, system board cable, power board cable, and light bar cable to the connectors on the system board and the display panel.

Next steps

1. Install the [speaker](#).
2. Install the [back cover](#).
3. Install the [stand](#).

4. Follow the procedure in [After working inside your monitor.](#)

System board and power board

Removing the system board and power board

Prerequisites

1. Follow the procedure in [Before working inside your monitor.](#)
2. Remove the [stand](#).
3. Remove the [back cover](#).
4. Remove the [speaker](#).
5. Remove the [metal shield](#).

About the task

The following image indicates the location of the system board, power board and provides a visual representation of the removal procedure.



Figure 15. Removing the Mylar



Figure 16. Removing the metal shield I/O-cover

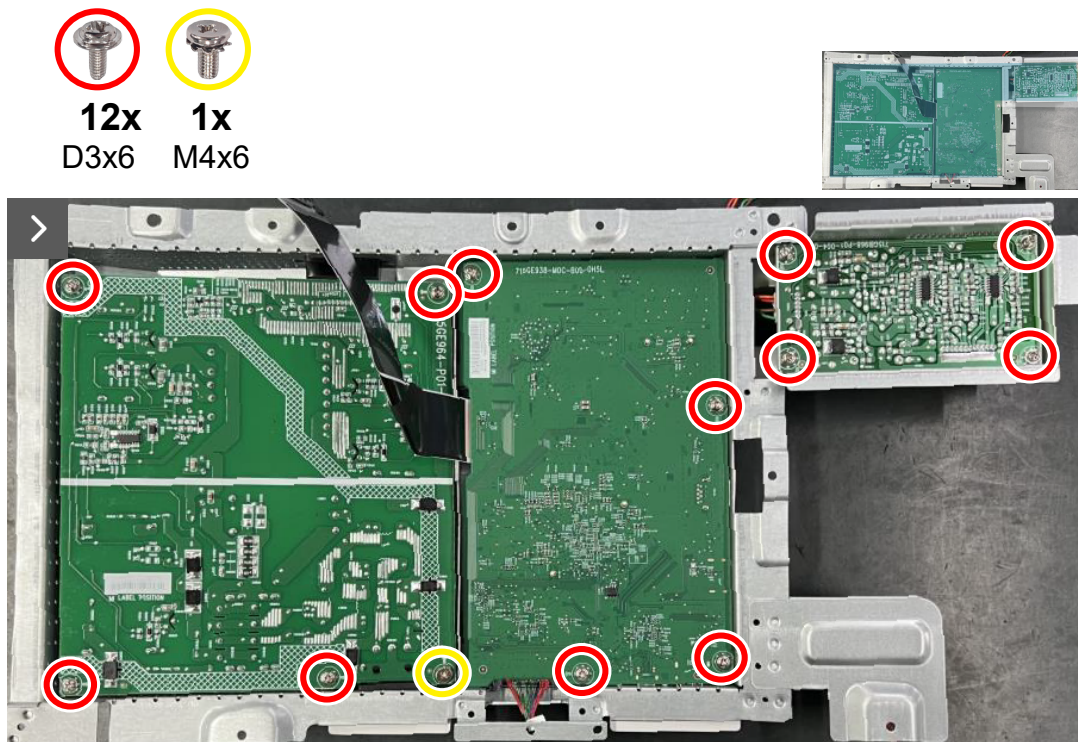


Figure 17. Removing the screws

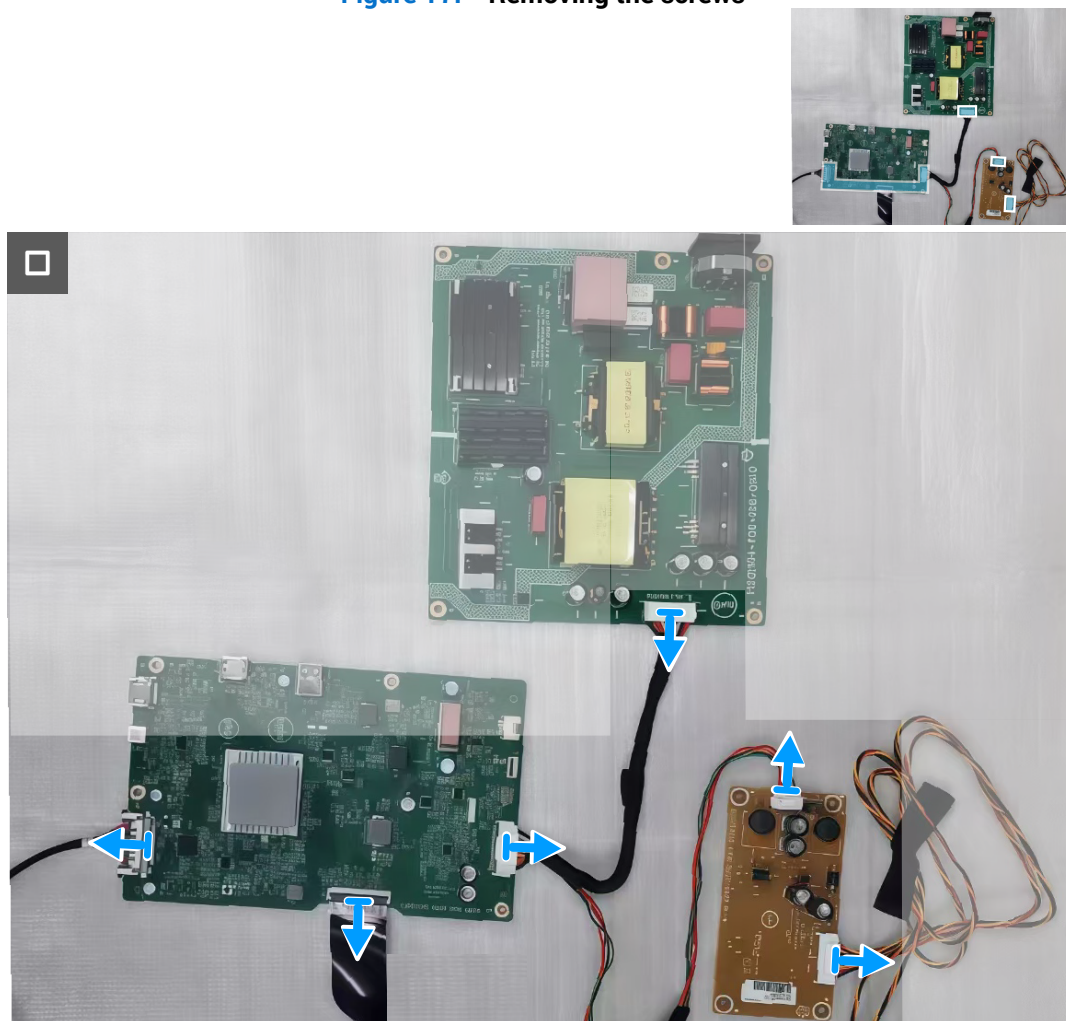


Figure 18. Disconnecting the cables

Steps

1. Remove the Mylar sheet from the system board and the power board.
2. Remove the metal shield I/O-cover from the metal shield.
3. Remove the twelve screws (D3x6) and the screw (M4x6) that secure the system board, power board, and converter board to the metal shield.
4. Disconnect the cables from the connectors on the system board, power board, and converter board.

Installing the system board and power board

Prerequisites

If you are replacing a component, remove the existing component before performing the installation procedure.

About this task

The following image indicates the location of the system board, power board, and provides a visual representation of the installation procedure.

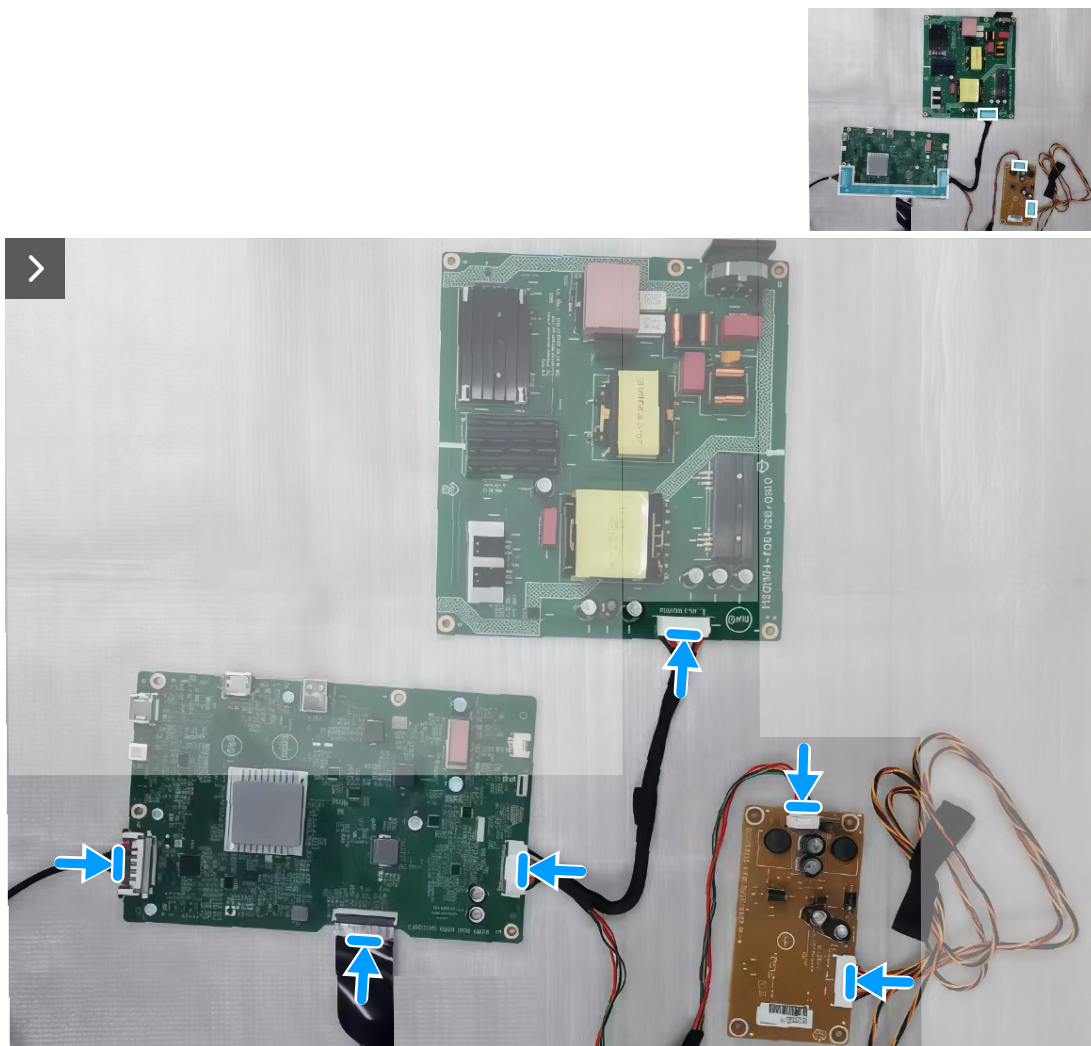


Figure 19. Connecting the cables

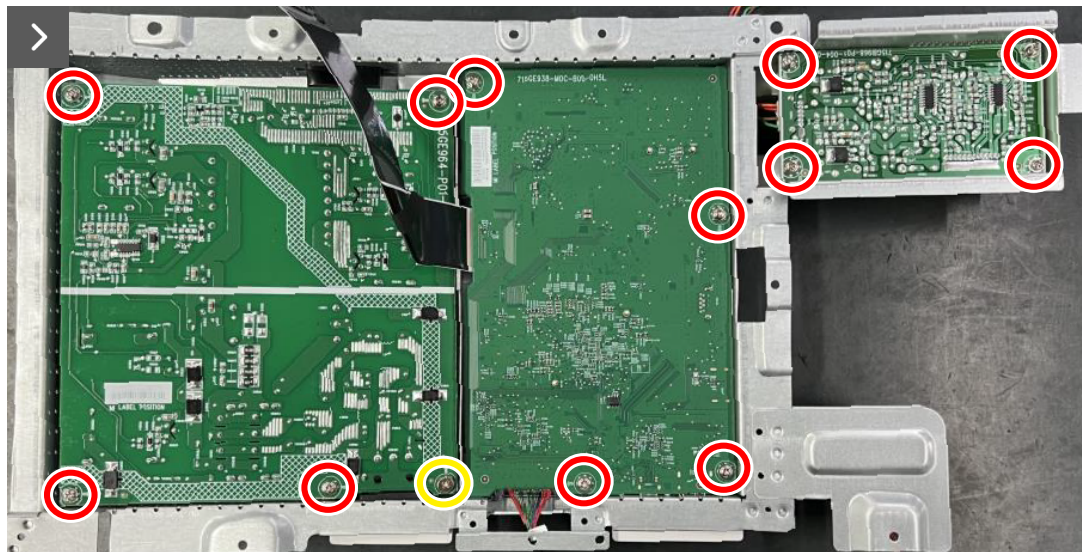
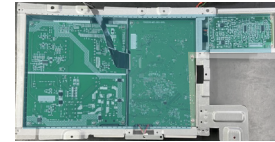
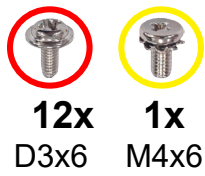


Figure 20. Replace the screws



Figure 21. Replace the metal shield I/O-cover

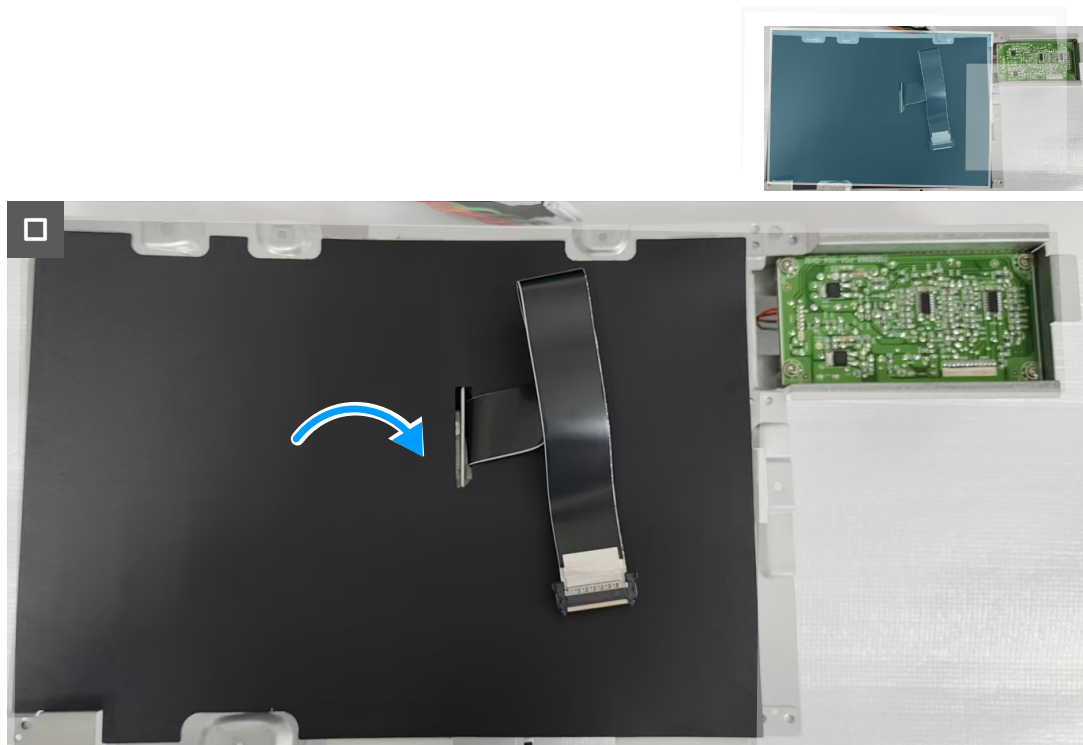


Figure 22. Installing the Mylar

Steps

1. Connect the cables to the connectors on the system board, power board, and converter board.
2. Replace the twelve screws (D3x6) and the screw (M4x6) to secure the system board, power board, and converter board to the metal shield.
3. Replace the metal shield I/O-cover on the metal shield.
4. Place the Mylar sheet on the system board and the power board.

Next steps

1. Install the [metal shield](#).
2. Install the [speaker](#).
3. Install the [back cover](#).
4. Install the [stand](#).
5. Follow the procedure in [After working inside your monitor](#).

Middle frame

Removing the middle frame

Prerequisites

1. Follow the procedure in [Before working inside your monitor](#).
2. Remove the [stand](#).
3. Remove the [back cover](#).
4. Remove the [speaker](#).
5. Remove the [metal shield](#).

About the task

The following image indicates the location of the middle frame and provides a visual representation of the removal procedure.

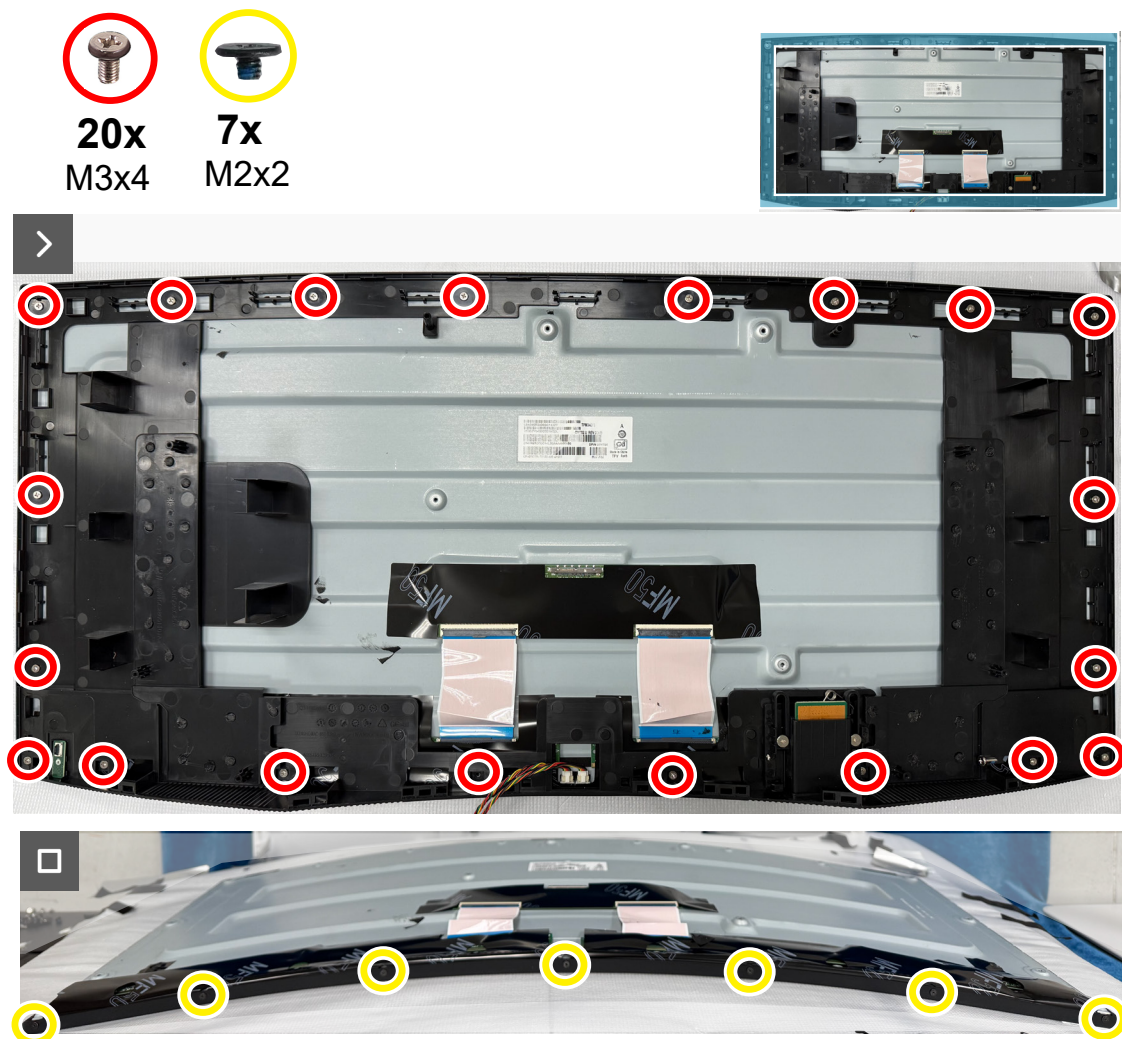


Figure 23. Removing the screws

Steps

1. Remove the twenty screws (M3x4) that secure the middle frame to the display panel.
2. Lift and remove the middle frame away from the display panel.
3. Remove the seven screws (M2x2.0) that secure the front trim to the display panel.
4. Remove the front trim away from the display panel.

Installing the middle frame

Prerequisites

If you are replacing a component, remove the existing component before performing the installation procedure.

About this task

The following image indicates the location of the middle frame and provides a visual representation of the installation procedure.

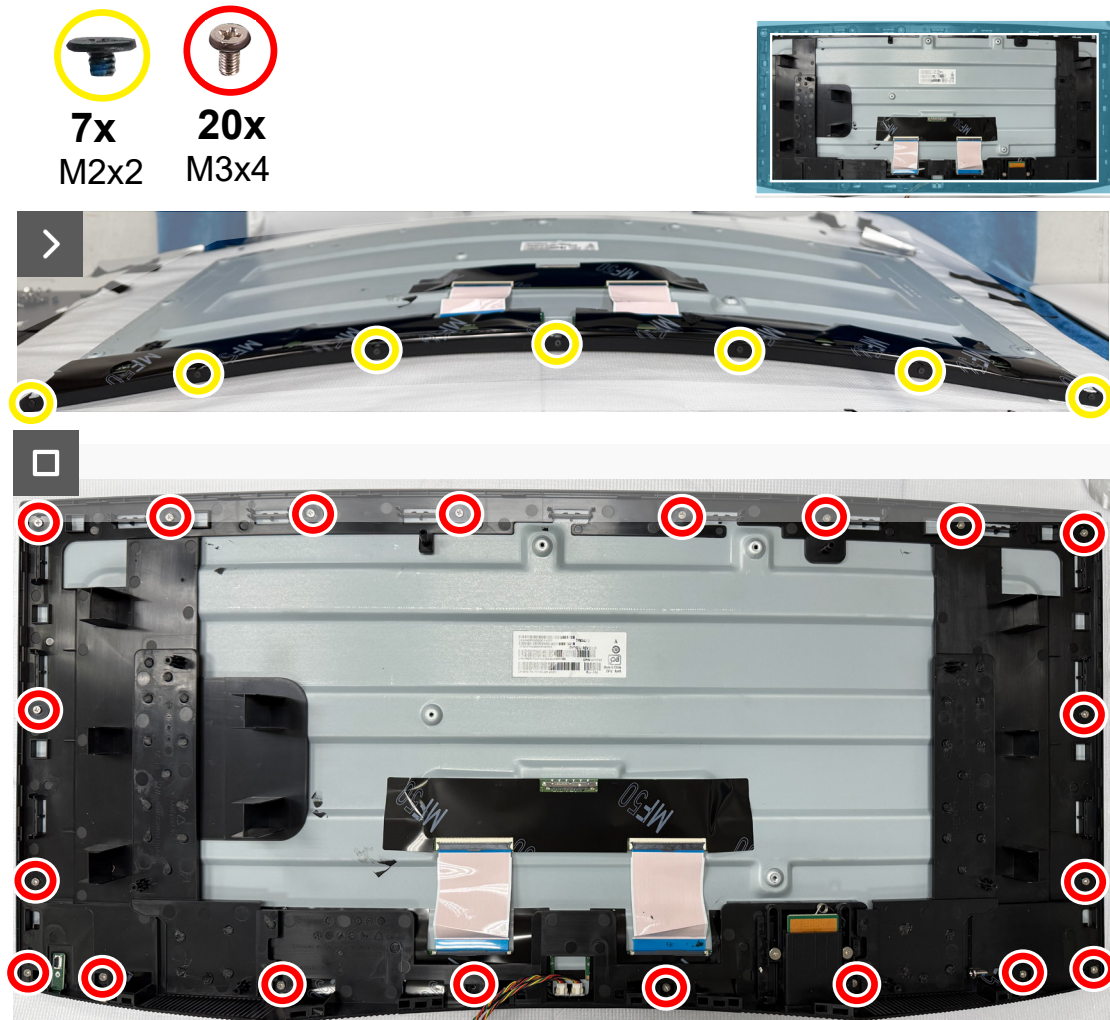


Figure 24. Replace the screws

Steps

1. Align and place the front trim on the display panel.
2. Replace the seven screws (M2X2) to secure the front trim to the display panel.
3. Align the middle frame and display panel.
4. Replace the twenty screws (M3X4) to secure the middle frame to the display panel.

Next steps

1. Install the [metal shield](#).
2. Install the [speaker](#).
3. Install the [back cover](#).
4. Install the [stand](#).
5. Follow the procedure in [After working inside your monitor](#).

Lens board

Removing the Lens board

Prerequisites

1. Follow the procedure in [Before working inside your monitor.](#)
2. Remove the [stand](#).
3. Remove the [back cover](#).
4. Remove the [speaker](#).
5. Remove the [metal shield](#).
6. Remove the [middle frame](#).

About the task

The following image indicates the location of the Lens board and provides a visual representation of the removal procedure.



Figure 25. Removing the Lens board

Steps

1. Remove the screw (Q2x2.5) that secure the Lens board to the middle frame.

Installing the Lens board

Prerequisites

If you are replacing a component, remove the existing component before performing the installation procedure.

About this task

The following image indicates the location of the Lens board and provides a visual representation of the installation procedure.

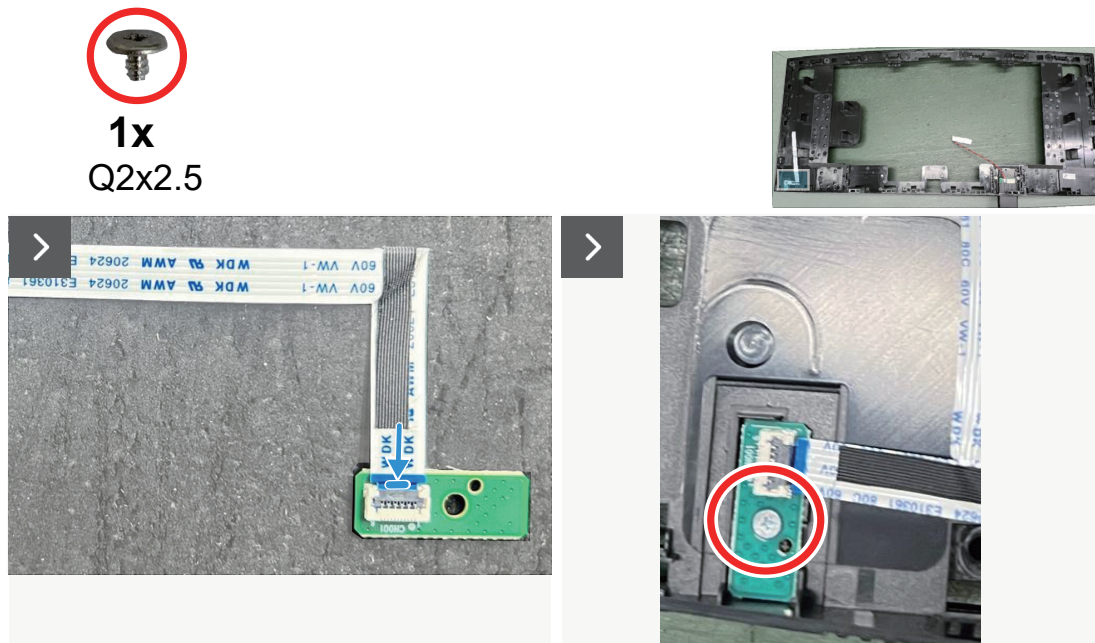


Figure 26. Installing the Lens board

Steps

1. Replace the screw (Q2x2.5) that secure the Lens board to the middle frame.

Next steps

1. Install the [middle frame](#).
2. Install the [metal shield](#).
3. Install the [speaker](#).
4. Install the [back cover](#).
5. Install the [stand](#).
6. Follow the procedure in [After working inside your monitor](#).

USB board

Removing the USB board

Prerequisites

1. Follow the procedure in [Before working inside your monitor](#).
2. Remove the [stand](#).
3. Remove the [back cover](#).
4. Remove the [speaker](#).
5. Remove the [metal shield](#).
6. Remove the [middle frame](#).

About the task

The following image indicates the location of the USB board and provides a visual representation of the removal procedure.

Installing the USB board

Prerequisites

If you are replacing a component, remove the existing component before performing the installation procedure.

About this task

The following image indicates the location of the USB board and provides a visual representation of the installation procedure.

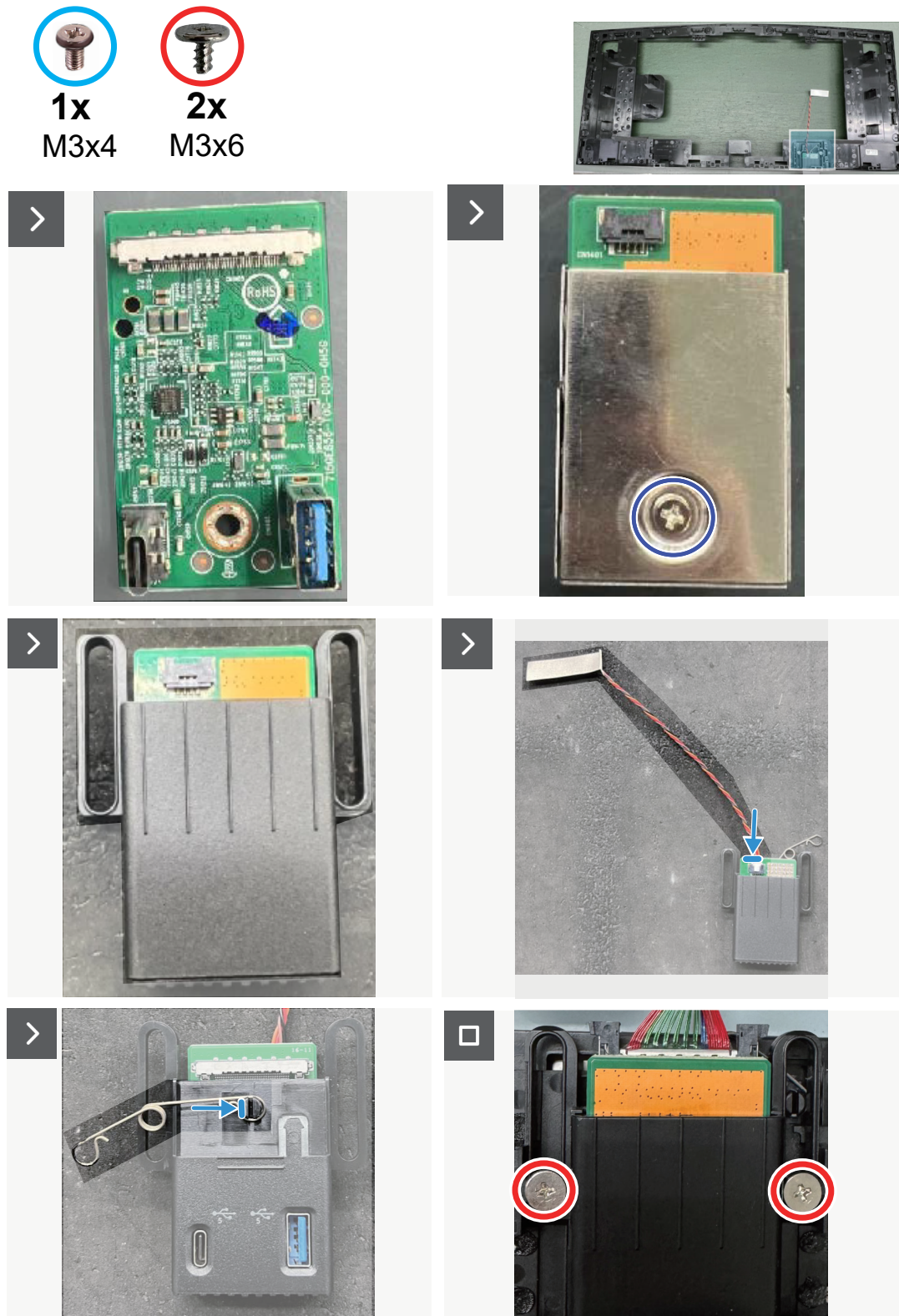


Figure 28. Installing the USB board

Steps

1. Replace the screw (M3x4) and the two screws (M3x6) that secure the USB board to the middle frame.

Next steps

1. Install the [middle frame](#).
2. Install the [metal shield](#).
3. Install the [speaker](#).
4. Install the [back cover](#).
5. Install the [stand](#).
6. Follow the procedure in [After working inside your monitor](#).

Keypad board

Removing the keypad board

Prerequisites

1. Follow the procedure in [Before working inside your monitor](#).
2. Remove the [stand](#).
3. Remove the [back cover](#).

About the task

The following image indicates the location of the keypad board and provides a visual representation of the removal procedure.



3x
Q2x2.5

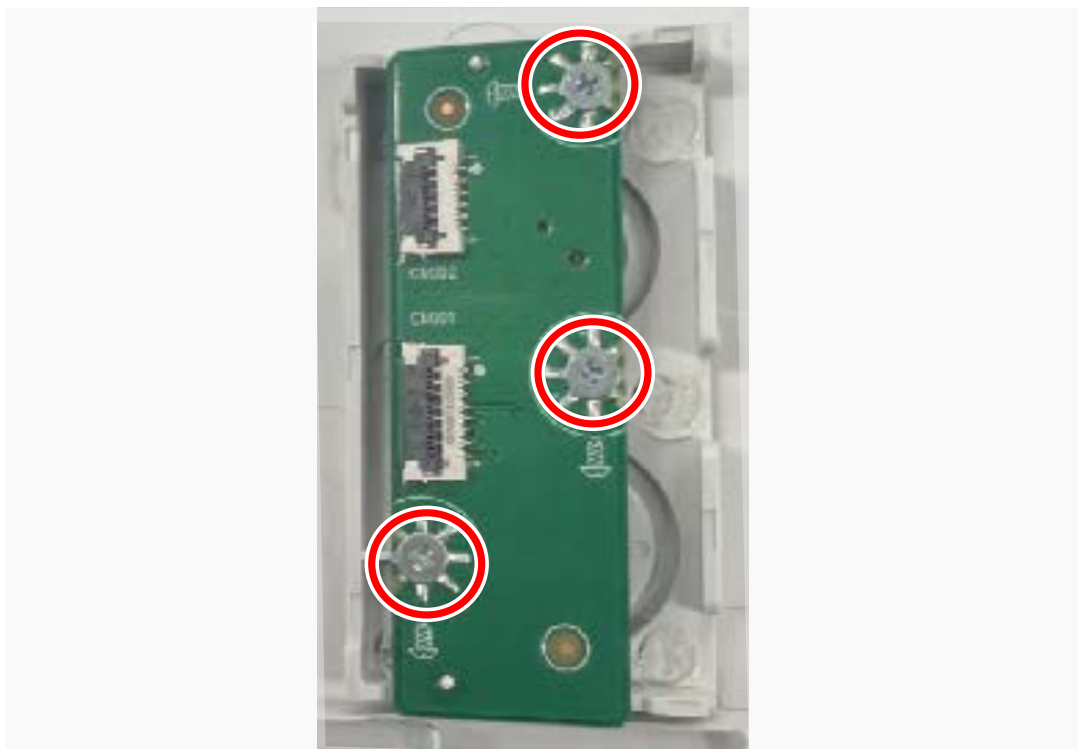
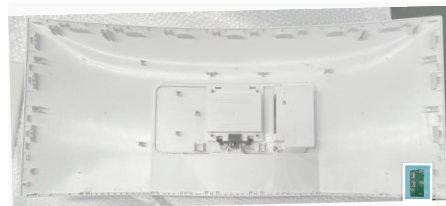


Figure 29. Removing the keypad board

Steps

1. Remove the three screws (Q2X2.5) that secure the keypad board to the back cover.
2. Lift the keypad board away from the back cover.

Installing the keypad board

Prerequisites

If you are replacing a component, remove the existing component before performing the installation procedure.

About this task

The following image indicates the location of the keypad board and provides a visual representation of the installation procedure.



3x
Q2x2.5

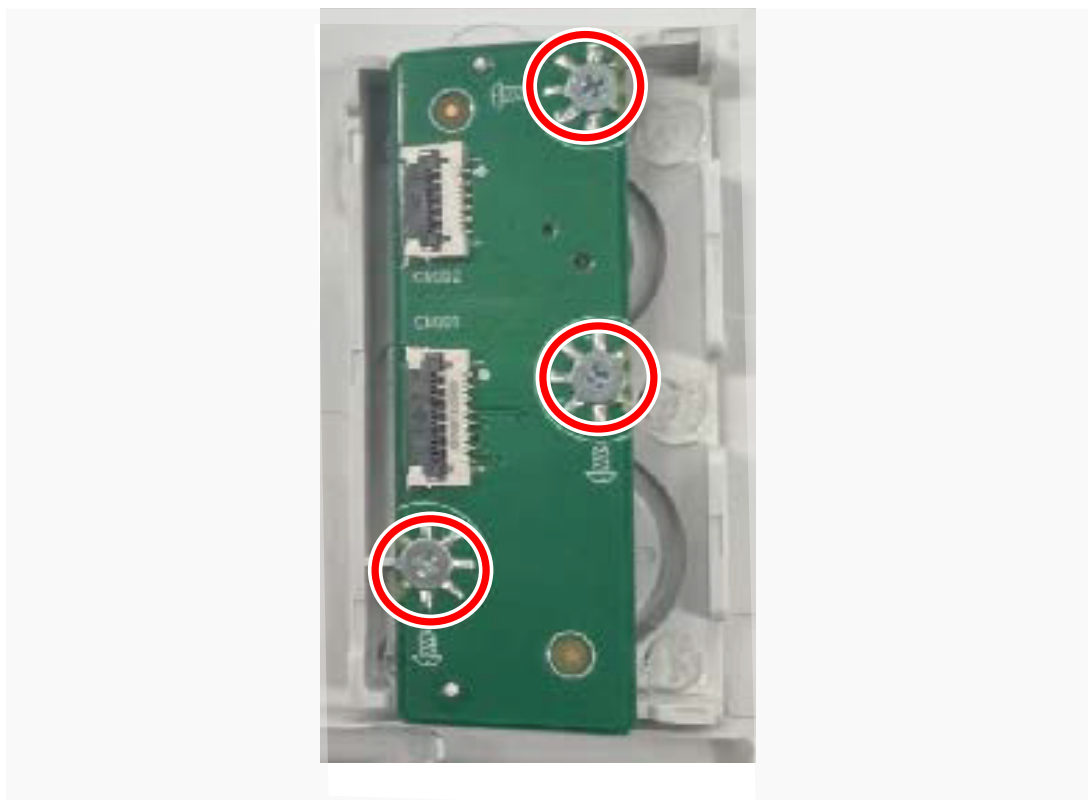
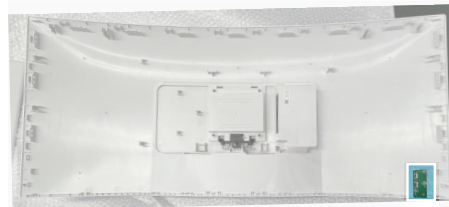


Figure 30. Installing the keypad board

Steps

1. Align and place the keypad board on the back cover.
2. Replace the three screws (Q2x2.5) to secure the keypad board to the back cover.

Next steps

1. Install the [back cover](#).
2. Install the [stand](#).
3. Follow the procedure in [After working inside your monitor](#).

Regulatory information

FCC notices (U.S. Only) and other regulatory information

For FCC notices and other regulatory information, see the regulatory compliance website at www.dell.com/regulatory_compliance.

EU product database for energy label and product information sheet

S3425DW: <https://eprel.ec.europa.eu/qr/2200407>

Contacting Dell

To contact Dell for sales, technical support, or customer service issues, see www.dell.com/contactdell.

- ① **NOTE:** Availability varies by country, region, or product, and some services may not be available in your country.
- ① **NOTE:** If you do not have an active Internet connection, you can find contact information about your purchase invoice, packing slip, bill, or Dell product catalog.