

Dell Pro 22 Monitor E2225HM

Teardown Instruction

Notes, cautions, and warnings

 **NOTE:** A NOTE indicates important information that helps you make better use of your product.

 **CAUTION:** A CAUTION indicates either potential damage to hardware or loss of data and tells you how to avoid the problem.


 **WARNING:** A WARNING indicates a potential for property damage, personal injury, or death.


Contents

Safety instructions	4
Before working inside your monitor	4
After working inside your monitor	4
Disassembly and reassembly	5
Recommended tools	5
Screw list	5
Stand	6
Removing the stand	6
Installing the stand	6
Back cover	7
Removing the back cover	7
Installing the back cover	7
Main chassis	8
Removing the main chassis	8
Installing the main chassis	10
Middle frame	12
Removing the middle frame	12
Installing the middle frame	13
Keypad board	13
Removing the keypad board	13
Installing the keypad board	14
Main board	15
Removing the main board	15
Installing the main board	16
Contacting Dell	18

Safety instructions

Use the following safety guidelines to protect your monitor from potential damage and to ensure your personal safety. Unless otherwise noted, each procedure in this document assumes that you have read the safety information that shipped with your monitor.

 **NOTE:** Before using the monitor, read the safety information that is shipped with your monitor and printed on the product. Keep the documentation at a secure location for future reference.

 **WARNING:** Use of controls, adjustments, or procedures other than those specified in this documentation may result in exposure to shock, electrical hazards and/or mechanical hazards.


 **CAUTION:** The possible long-term effect of listening to audio at high volume through the headphones (on monitors that support it) can damage your hearing ability.

- Place the monitor on a solid surface and handle it carefully.
 - The screen is fragile and can be damaged if dropped or pressed with a sharp object.
 - Ensure that your monitor is electrically rated to operate with the AC power available in your location.
 - Keep the monitor at room temperature. Excessive cold or hot conditions can have an adverse effect on the liquid crystal of the display.
 - Connect the power cable from the monitor to a wall outlet that is near and accessible. See Connecting your monitor.
- Do not place or use the monitor on a wet surface or near water.
- Do not subject the monitor to severe vibration or high impact conditions. For example, do not place the monitor inside a car trunk.
- Unplug the monitor when it is going to be left unused for an extended period.
- To avoid electric shock, do not attempt to remove any cover or touch the inside of the monitor.
- Read these instructions carefully. Keep this document for future reference. Follow all warnings and instructions that are marked on the product.
- Certain monitors can be wall-mounted using the VESA mount that is sold separately. Ensure to use the correct VESA specifications as mentioned in the wall mounting section of the User's Guide.


For information about safety instructions, see the Safety, Environmental, and Regulatory Information (SERI) document that is shipped with your monitor.

Before working inside your monitor

Steps

1. Save and close all open files and exit all open applications.
2. Turn off your monitor.
3. Disconnect your monitor and all attached devices from their electrical outlets.
4. Disconnect all attached network devices and peripherals, such as keyboard, mouse, and dock from your monitor.
-  **WARNING:** To disconnect a network cable, first unplug the cable from your monitor and then unplug the cable from the network device.
5. Remove any media card and optical disc from your monitor, if applicable.

After working inside your monitor

 **CAUTION:** Leaving stray or loose screws inside your monitor may severely damage your monitor.

Steps

1. Replace all screws and ensure that no stray screws remain inside your monitor.
2. Connect any external devices, peripherals, or cables you removed before working on your monitor.
3. Replace any media cards, discs, or any other parts that you removed before working on your monitor.
4. Connect your monitor and all attached devices to their electrical outlets.
5. Turn on your monitor.

Disassembly and reassembly

⚠ **CAUTION:** The information in this section is intended for authorized service technicians in the EMEA region. Dell prohibits users from disassembling the monitor, and any damage that is caused by unauthorized servicing will not be covered under the warranty.

Recommended tools








Tool Description:

- Phillips screwdriver #0
- Phillips screwdriver #2
- Nut driver 5 mm
- Penknife

Screw list

- ① **NOTE:** When removing screws from a component, it is recommended to note the screw type, the quantity of screws, and then place them in a screw storage box. This is to ensure that the correct number of screws and correct screw type is restored when the component is replaced.
- ① **NOTE:** Some monitors have magnetic surfaces. Ensure that the screws are not left attached to such surfaces when replacing a component.
- ① **NOTE:** Screw color may vary with the configuration ordered.

Table 1. Components and descriptions.

Component	Screw type	Quantity	Screw image
Back cover	M4x6	2	
VGA connector	M3x8	2	
Main chassis	M3x3	3	
Middle frame	M3x5	9	
Main board groundwire	M4x8	1	
Main board	M3x6	2	
Key board	M2x3.3	3	

Stand

Removing the stand

Prerequisites

1. Follow the procedure in [Before working inside your monitor.](#)

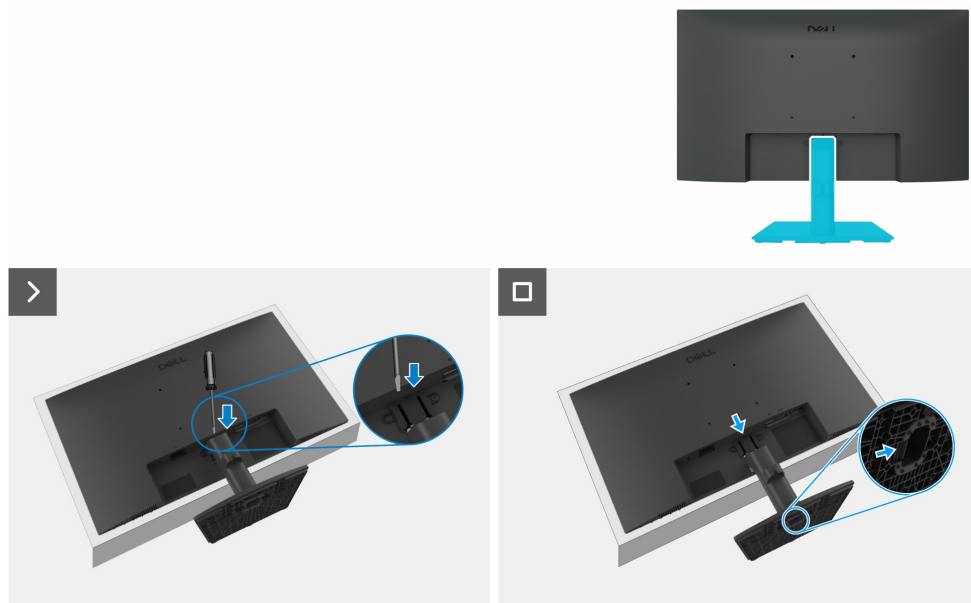


Figure 1. Removing the stand

Steps

1. Place the monitor on a soft cloth or cushion on the desk.
2. Use a long, thin screwdriver to push the release button.
3. While keeping the release button pressed, pull the stand out from the monitor.
4. Press the quick release tab on the bottom of the base to separate the stand base from the stand riser.

Installing the stand

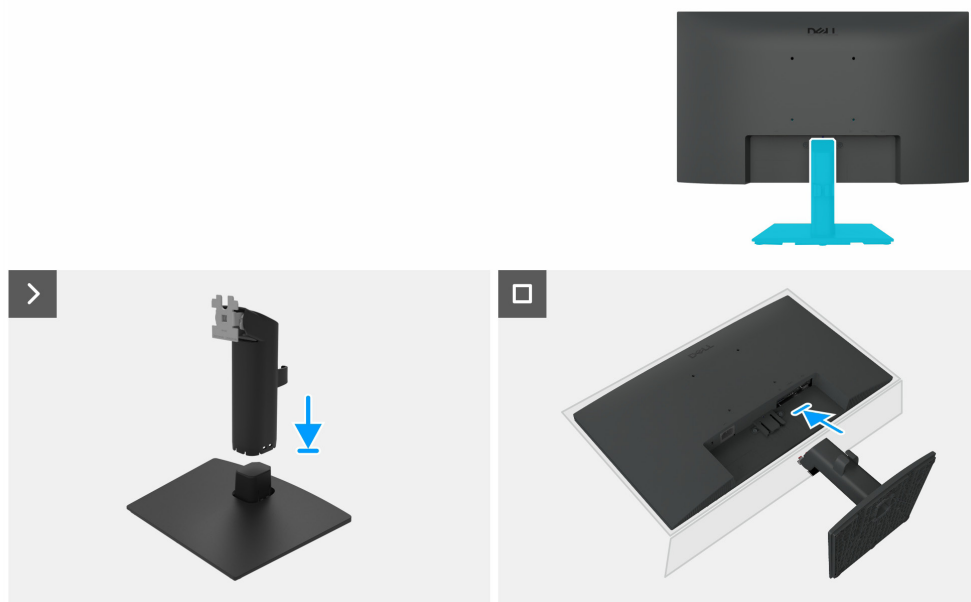


Figure 2. Installing the stand

Steps

1. Place the monitor stand base on a stable tabletop.
2. Slide the monitor stand body in the correct direction down onto the stand base until it clicks into place.

3. Place the monitor on a soft cloth or cushion near the edge of the desk.
4. Align the stand assembly bracket with the monitor groove.
5. Insert the stand assembly towards the monitor until it locks in place.

Next steps

1. Follow the procedure in [After working inside your monitor](#).

Back cover

Removing the back cover

Prerequisites

1. Follow the procedure in [Before working inside your monitor](#).
2. Remove the [stand](#).



Figure 3. Removing the back cover

Steps

1. Remove two screws (M4x6) to release the back cover.
2. Using both hands, gently pry the back cover off, starting from the left and right sides, then moving to the top and bottom.
3. Lift and remove the back cover from the monitor.

Installing the back cover

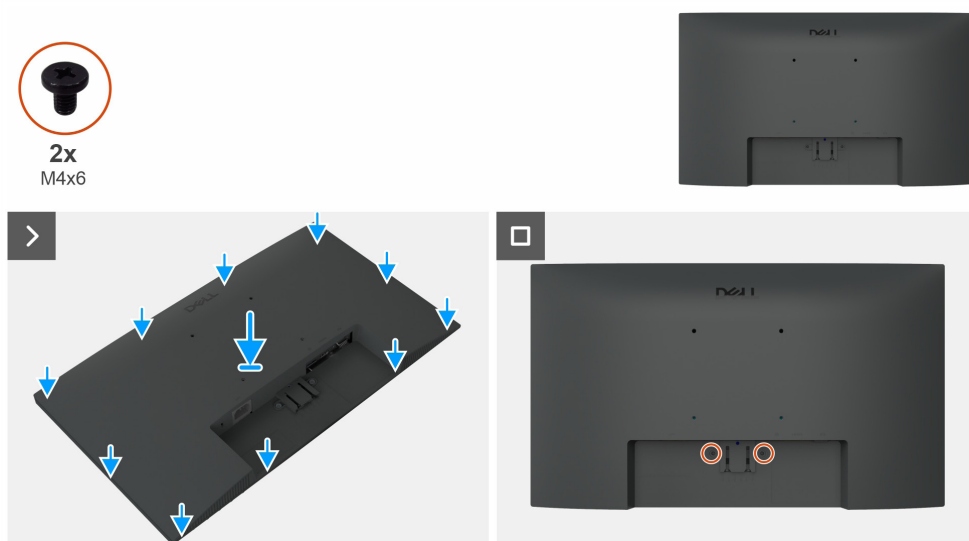


Figure 4. Installing the back cover

Steps

1. Align the slots on the back cover with the slots on the main chassis, then press along the sides to snap the back cover into place.
2. Replace the two screws (M4x6) that secure the back cover to the display monitor.

Next steps

1. Install the [stand](#).
2. Follow the procedure in [After working inside your monitor](#).

Main chassis

Removing the main chassis

Prerequisites

1. Follow the procedure in [Before working inside your monitor](#).
2. Remove the [stand](#).
3. Remove the [back cover](#).

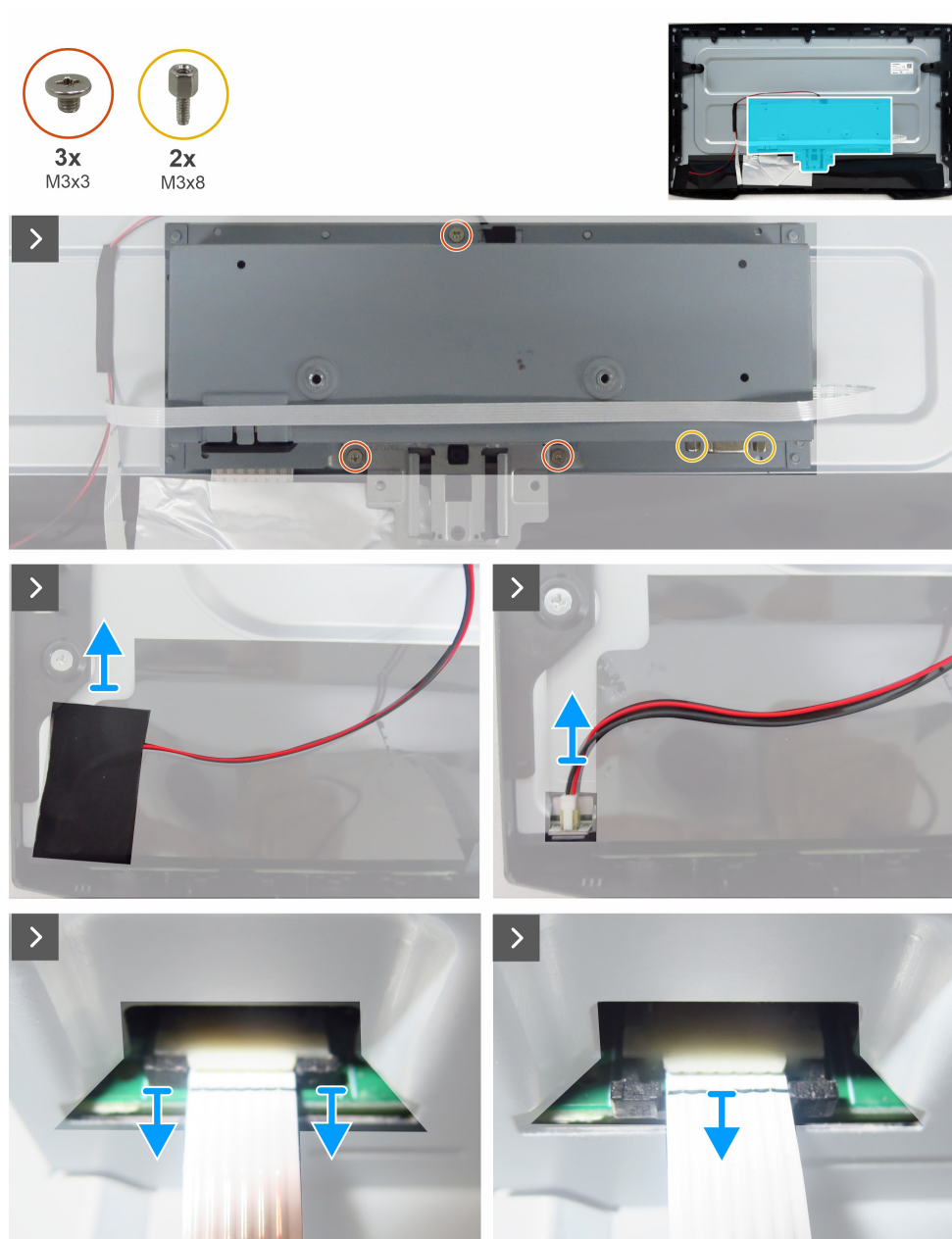


Figure 5. Removing the main chassis

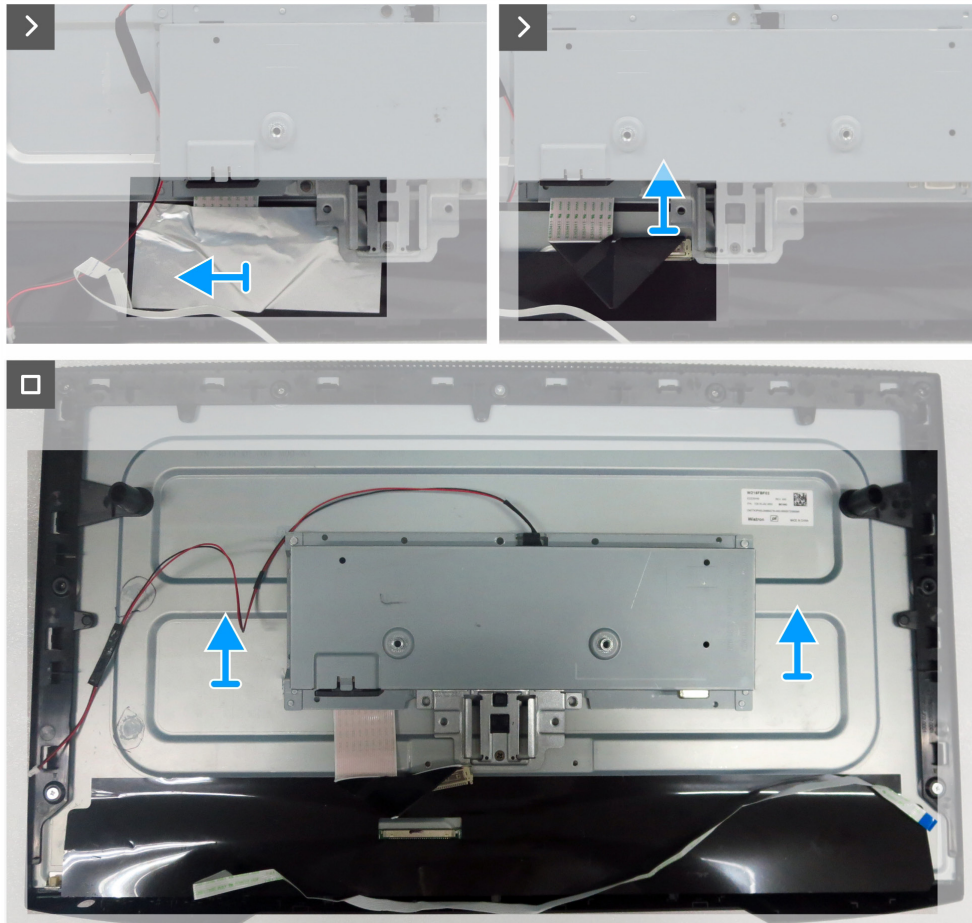


Figure 6. Removing the main chassis

Steps

1. Remove the three screws (M3x3) that secure the main chassis to the display panel.
2. Remove the two screws (M3x8) that secure the VGA connector to the main chassis.
3. Peel the acetate tape and disconnect the lightbar cable from the connector on the display panel.
4. Disconnect the keypad cable from the connector on the main board.
5. Peel the aluminum foil on the LVDS cable.
6. Disconnect the LVDS cable from the connector on the display panel.
7. Lift and remove the main chassis from the display panel.

Installing the main chassis

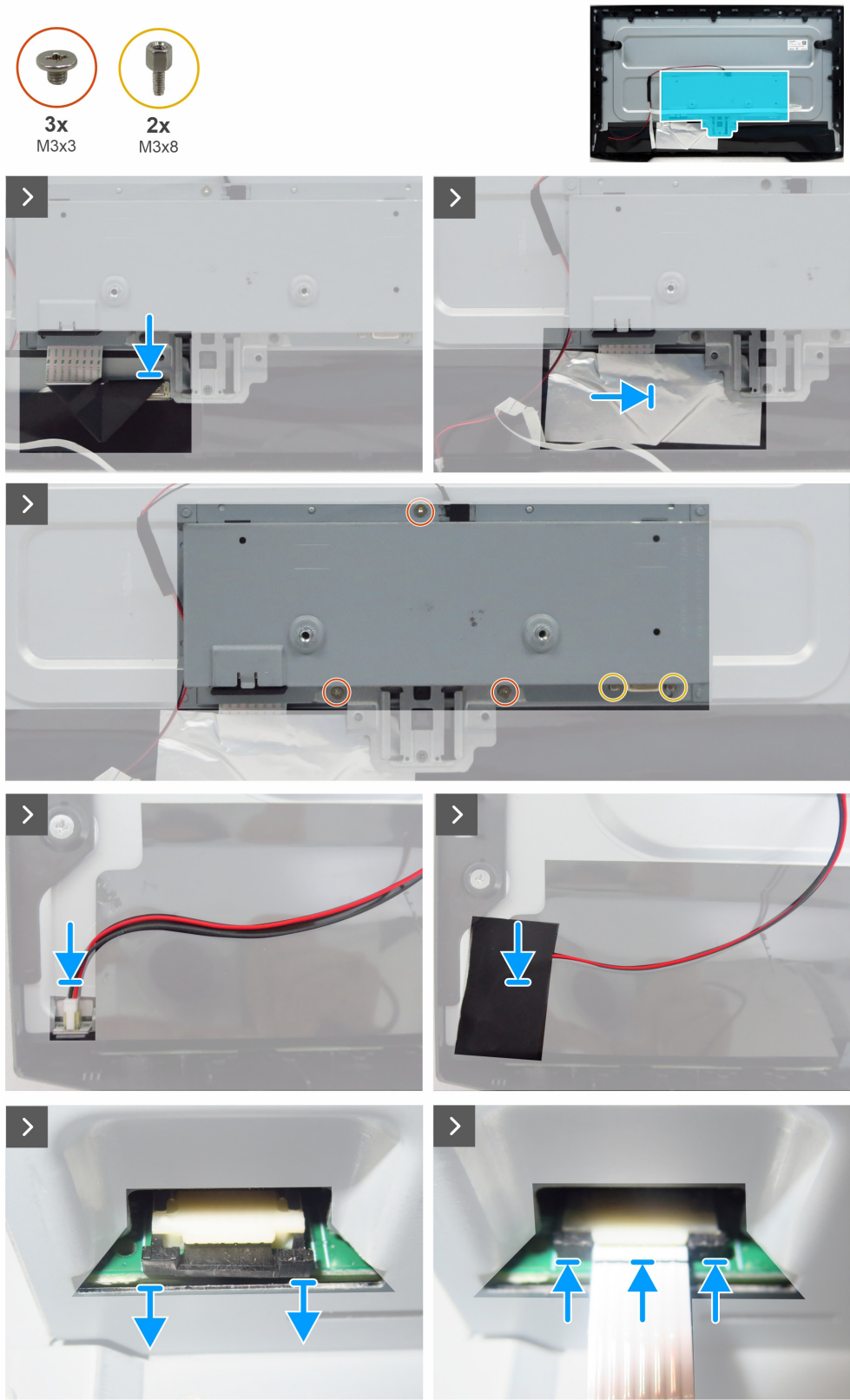


Figure 7. Installing the main chassis

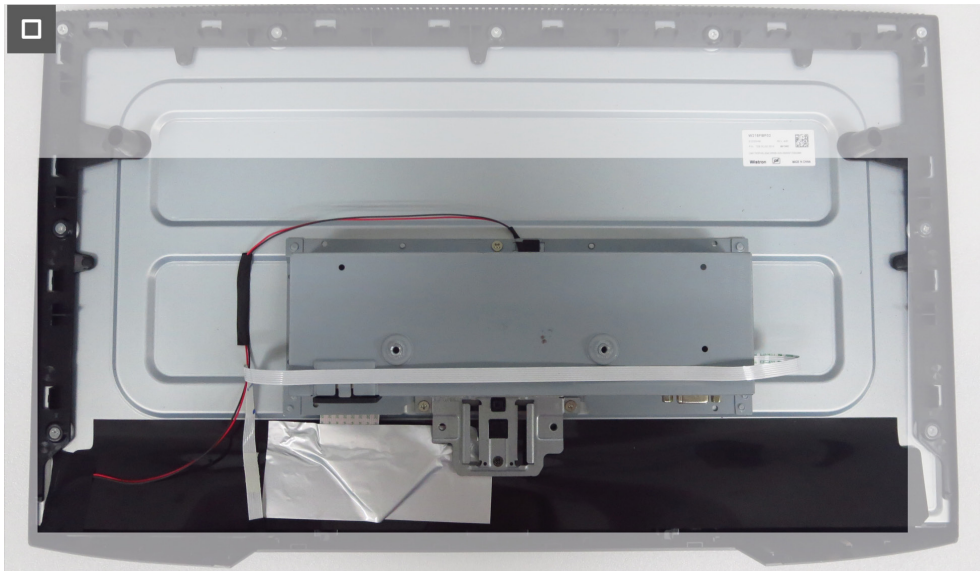


Figure 8. Installing the main chassis

Steps

1. Connect the LVDS cable to the connector on the display panel.
2. Adhere the aluminum foil to cover the LVDS connector.
3. Align the holes on the main chassis with the screw holes on the display panel and place it down.
4. Replace the three screws (M3x3) that secure the main chassis to the display panel.
5. Replace the two screws (M3x8) to secure the VGA connector.
6. Connect the lightbar cable to the connector on the display panel.
7. Adhere the acetate tape to cover the connector.
8. Connect the keypad cable to the connector on the main board.
9. Adhere the keypad cable on the main chassis.

Next steps

1. Install the [back cover](#).
2. Install the [stand](#).
3. Follow the procedure in [After working inside your monitor](#).

Middle frame

Removing the middle frame

Prerequisites

1. Follow the procedure in [Before working inside your monitor.](#)
2. Remove the [stand.](#)
3. Remove the [back cover.](#)
4. Remove the [main chassis.](#)



Figure 9. Removing the middle frame

Steps

1. Remove the nine screws (M3x5) that secure the middle frame to the display panel.
2. Lift and remove the middle frame from the display panel.

Installing the middle frame



Figure 10. Installing the middle frame

Steps

1. Align the screw holes on the middle frame with the holes on the display panel and place it down.
2. Replace the nine screws (M3x5) that secure the middle frame to the display panel.

Next steps

1. Install the [main chassis](#).
2. Install the [back cover](#).
3. Install the [stand](#).
4. Follow the procedure in [After working inside your monitor](#).

Keypad board

Removing the keypad board

Prerequisites

1. Follow the procedure in [Before working inside your monitor](#).
2. Remove the [stand](#).
3. Remove the [back cover](#).
4. Remove the [main chassis](#).
5. Remove the [middle frame](#).

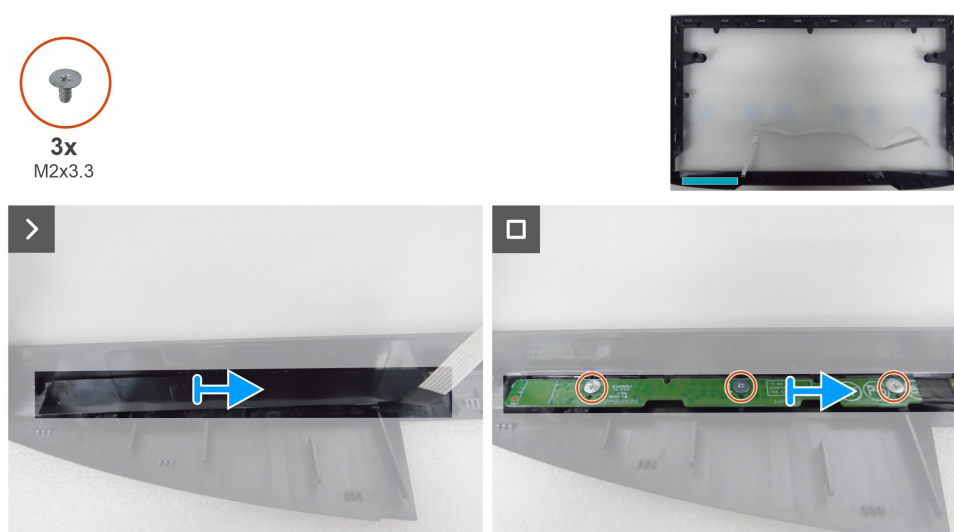


Figure 11. Removing the keypad board

Steps

1. Peel the Mylar tape from the middle frame.
2. Remove the three screws (M2x3.3) that secure the keypad board to the middle frame.
3. Remove the keypad board from the slots of the middle frame.

Installing the keypad board



Figure 12. Installing the keypad board

Steps

1. Align the holes on the keypad board with the screw holes on the middle frame and place it down.
2. Replace the three screws (M2x3.3) that secure the keypad board to the middle frame.
3. Adhere the Mylar tape to cover the keypad board.

Next steps

1. Install the [middle frame](#).
2. Install the [main chassis](#).
3. Install the [back cover](#).
4. Install the [stand](#).
5. Follow the procedure in [After working inside your monitor](#).

Main board

Removing the main board

Prerequisites

1. Follow the procedure in [Before working inside your monitor](#).
2. Remove the [stand](#).
3. Remove the [back cover](#).
4. Remove the [main chassis](#).
5. Remove the [middle frame](#).
6. Remove the [keypad board](#).

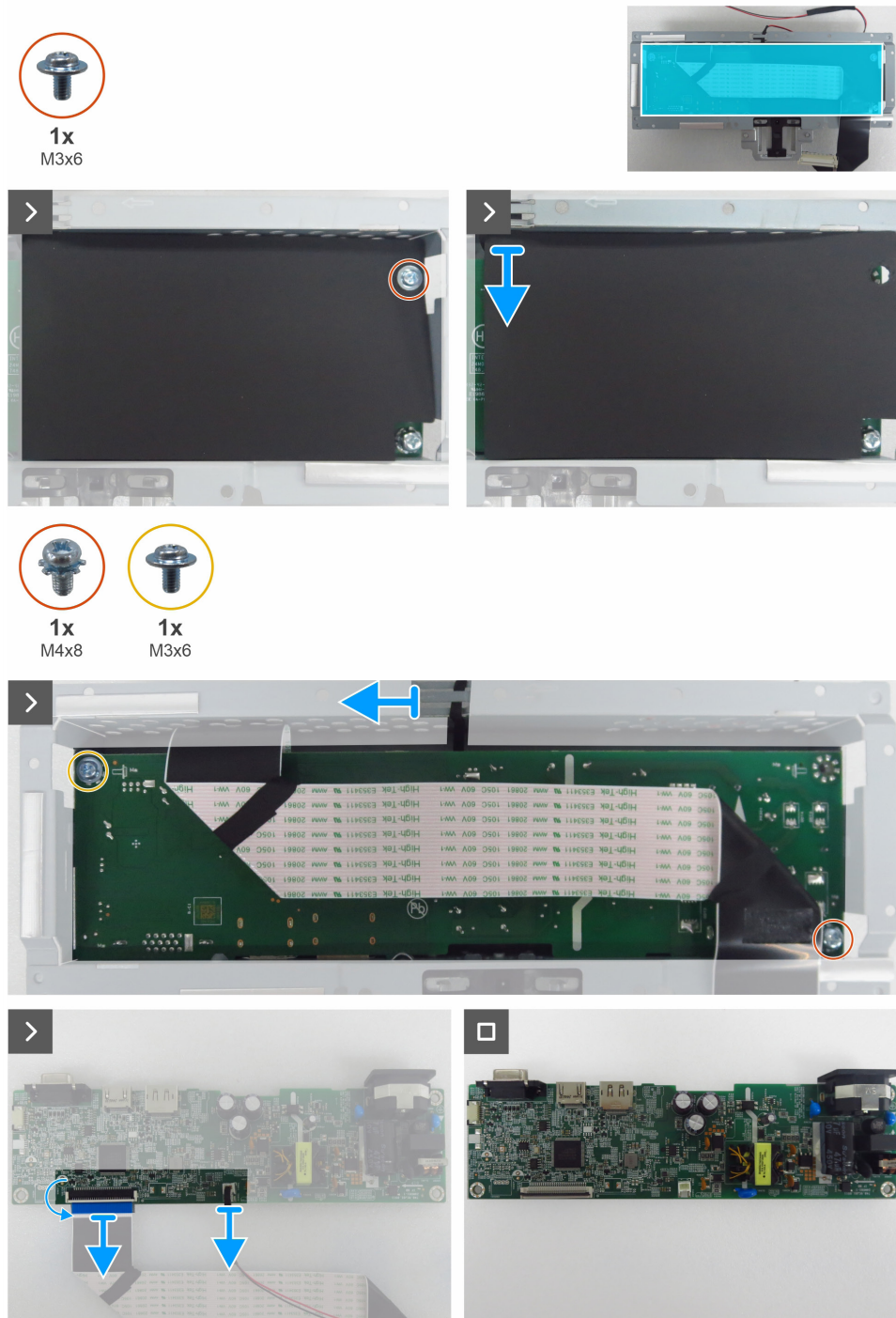


Figure 13. Removing the main board

Steps

1. Remove the screw (M3x6) on the main board that secures the Mylar sheet and the main board to the main chassis.
2. Remove the Mylar sheet from the slots of the main chassis.
3. Remove the screw (M3x6) and the screw (M4x8) that secure the main board to the main chassis.
4. Remove the lightbar cable from the routing guides on the main chassis.
5. Remove the main board from the main chassis.
6. Disconnect the LVDS cable and lightbar cable from the connectors on the main board.

Installing the main board

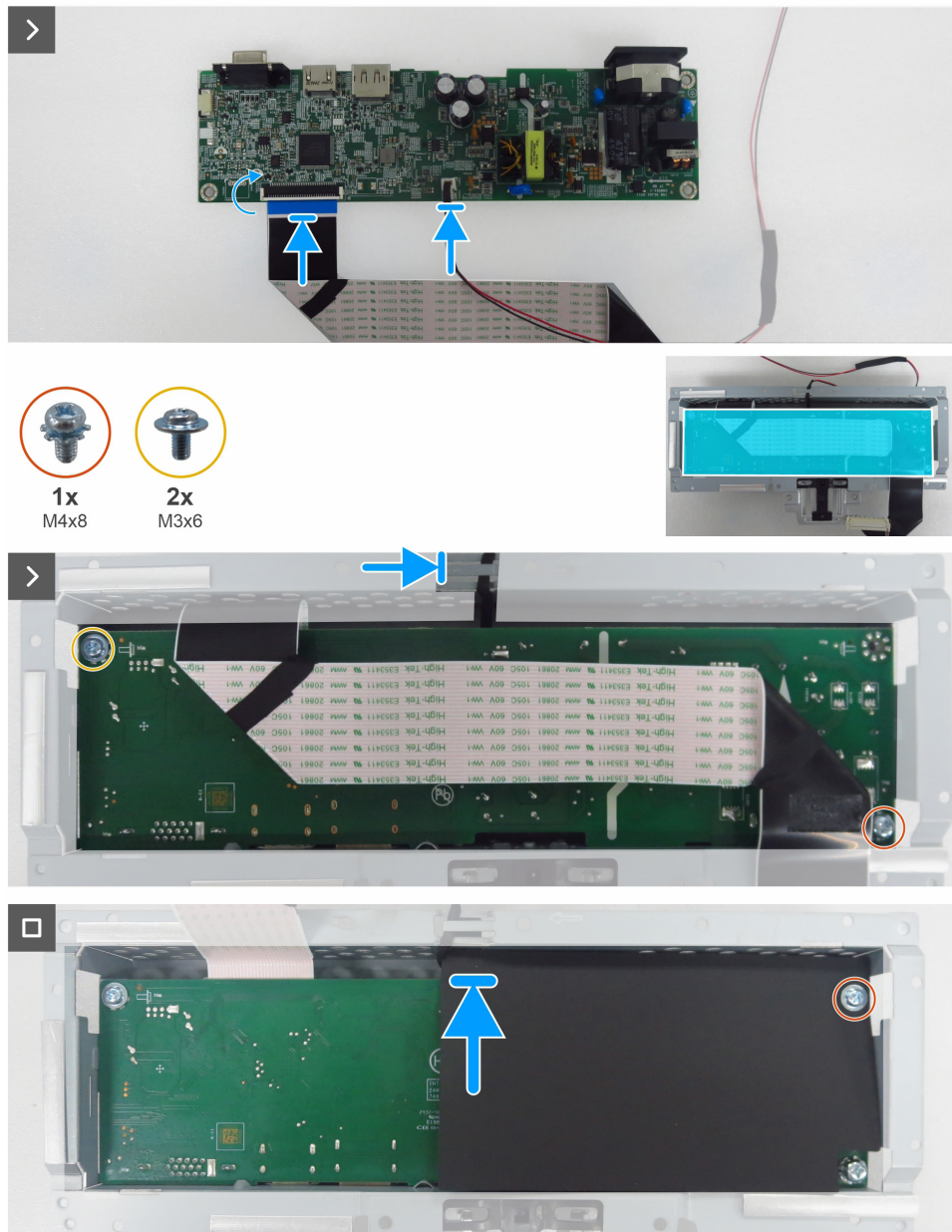


Figure 14. Installing the main board

Steps

1. Connect the LVDS cable and the lightbar cable to the connectors on the main board.
2. Align the screw holes on the main board with the screw holes on the main chassis and place it down.
3. Replace the screws (M3x6) and the screw (M4x8) that secure the main board to the main chassis.
4. Route the lightbar cable through the routing guides on the main chassis.
5. Replace the Mylar sheet to the main chassis.
6. Replace the screw (M3x6) that secures the Mylar sheet and the main board to the main chassis.

Next steps

1. Install the [keypad board](#).
2. Install the [middle frame](#).
3. Install the [main chassis](#).
4. Install the [back cover](#).
5. Install the [stand](#).
6. Follow the procedure in [After working inside your monitor](#).

Contacting Dell

To contact Dell for sales, technical support, or customer service issues, see www.dell.com/contactdell.

- ① **NOTE:** Availability varies by country and product, and some services may not be available in your country.
- ① **NOTE:** If you do not have an active Internet connection, you can find contact information on your purchase invoice, packing slip, bill, or Dell product catalog.