


# **Dell Pro 27 Monitor**

## **E2725HM**

### Teardown Instructions

## Notes, cautions, and warnings

 **NOTE:** A NOTE indicates important information that helps you make better use of your product.

 **CAUTION:** A CAUTION indicates either potential damage to hardware or loss of data and tells you how to avoid the problem.


 **WARNING:** A WARNING indicates a potential for property damage, personal injury, or death.


# Contents


<b>Safety Instructions</b>	<b>3</b>
Before working inside your monitor	3
After working inside your monitor	3
<b>Disassembly and reassembly</b>	<b>4</b>
Recommended tools	4
Screw list	4
Stand	5
Removing the stand	5
Installing the stand	6
Back cover	7
Removing the back cover	7
Installing the back cover	8
Middle frame	9
Removing the middle frame	9
Installing the middle frame	10
Metal shield	10
Removing the metal shield	10
Installing the metal shield	12
Keypad board	14
Removing the keypad board	14
Installing the keypad board	15
System board and power board	16
Removing the system board and power board	16
Installing the system board and power board	18
Contacting Dell	20

# Safety Instructions

Use the following safety guidelines to protect your monitor from potential damage and to ensure your personal safety. Unless otherwise noted, each procedure in this document assumes that you have read the safety information that shipped with your monitor.

 **NOTE:** Before using the monitor, read the safety information that is shipped with your monitor and printed on the product. Keep the documentation at a secure location for future reference.

 **WARNING:** Use of controls, adjustments, or procedures other than those specified in this documentation may result in exposure to shock, electrical hazards, and/or mechanical hazards.

 **CAUTION:** The possible long-term effect of listening to audio at high volume through headphones (on a monitor that supports it) may cause damage to your hearing ability.

- Place the monitor on a solid surface and handle it carefully. The screen is fragile and can be damaged if dropped or pressed with a sharp object.
- Ensure that your monitor is electrically rated to operate with the AC power available in your location.
- Keep the monitor at room temperature. Excessive cold or hot conditions can have an adverse effect on the liquid crystal of the display.


Connect the power cable from the monitor to a wall outlet that is near and accessible. See [Connecting your monitor](#).

- Do not place or use the monitor on a wet surface or near water.
- Do not subject the monitor to severe vibration or high-impact conditions. For example, do not place the monitor inside a car trunk.
- Unplug the monitor when it is going to be left unused for an extended period.
- To avoid electric shock, do not attempt to remove any cover or touch the inside of the monitor.
- Read these instructions carefully. Keep this document for future reference. Follow all warnings and instructions that are marked on the product.
- Certain monitors can be wall-mounted using the VESA mount that is sold separately. Ensure to use the correct VESA specifications as mentioned in the wall mounting section of the User's Guide.

For information about safety instructions, see the Safety, Environmental, and Regulatory Information (SERI) document that is shipped with your monitor.

## Before working inside your monitor

### Steps

1. Save and close all open files and exit all open applications.
  2. Turn off your monitor.
  3. Disconnect your monitor and all attached devices from their electrical outlets.
  4. Disconnect all attached network devices and peripherals, such as keyboard, mouse, and dock from your monitor.
-  **CAUTION:** To disconnect a network cable, first unplug the cable from your monitor and then unplug the cable from the network device.
5. Remove any media card and optical disc from your monitor, if applicable.

## After working inside your monitor

 **CAUTION:** Leaving stray or loose screws inside your monitor may severely damage your monitor.

### Steps

1. Replace all screws and ensure that no stray screws remain inside your monitor.
2. Connect any external devices, peripherals, or cables you removed before working on your monitor.
3. Replace any media cards, discs, or any other parts that you removed before working on your monitor.
4. Connect your monitor and all attached devices to their electrical outlets.
5. Turn on your monitor.



# Disassembly and reassembly

**⚠ CAUTION:** The information in this section is intended for authorized service technicians in the EMEA region. Dell prohibits users from disassembling the monitor, and any damage that is caused by unauthorized servicing will not be covered under the warranty.











## Recommended tools

1. Screwdriver (Phillips-head, Hexagonal head)
2. Penknife

## Screw list

- i NOTE:** When removing screws from a component, it is recommended to note the screw type, the quantity of screws, and then place them in a screw storage box. This is to ensure that the correct number of screws and correct screw type is restored when the component is replaced.
- i NOTE:** Some computers have magnetic surfaces. Ensure that the screws are not left attached to such surfaces when replacing a component.
- i NOTE:** Screw color may vary with the configuration ordered.

**Table 1. Screw list.**

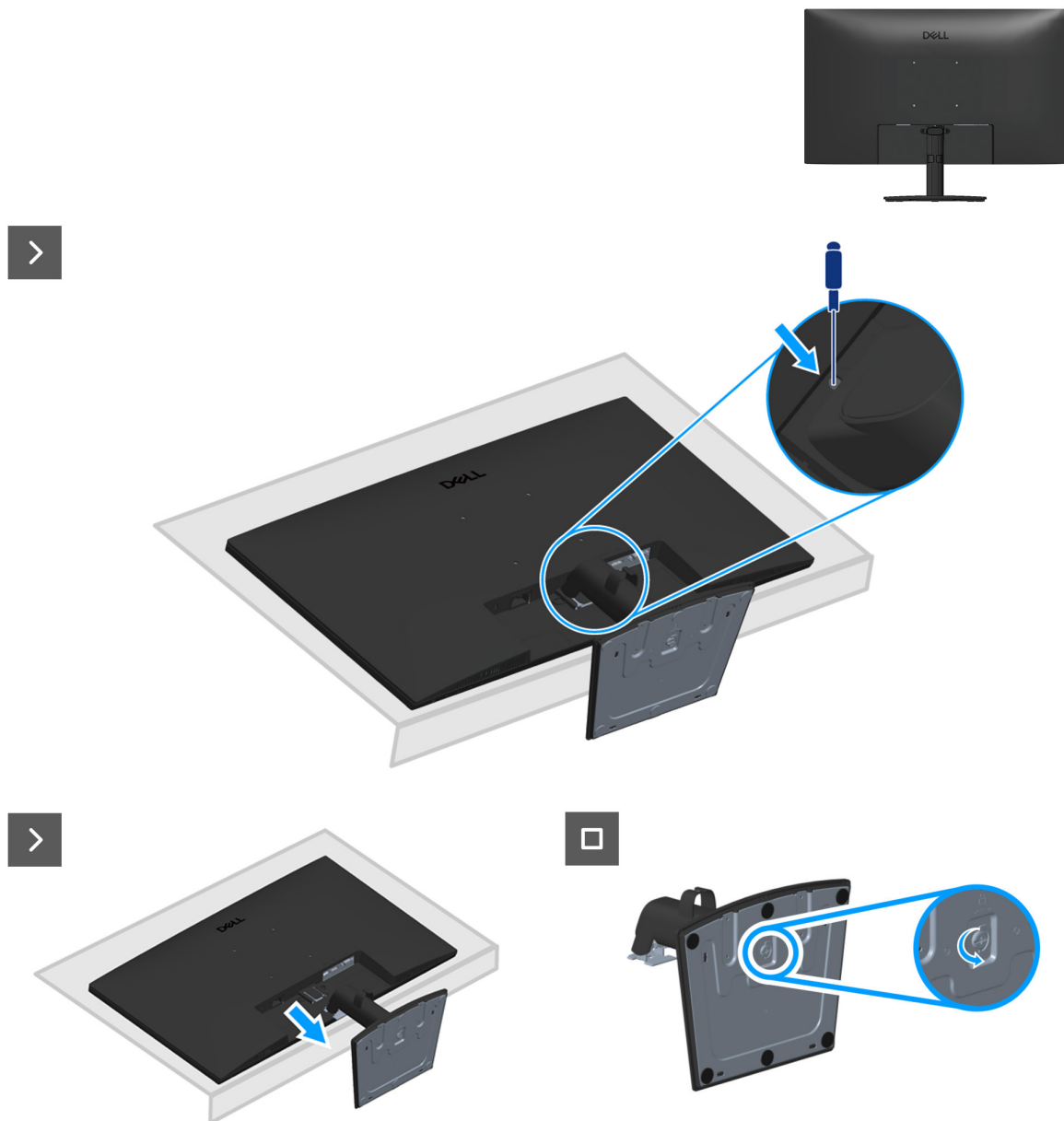
Component	Screw type	Quantity	Screw images
Back cover	M4x10	4	
	M3x4	2	
Metal shield	M3x4	2	
	M3x2.5	2	
	4-40unc	2	
System board and Power board	M3x7	3	
Power board	M4x8	1	
Middle frame	M3x4	13	
	M3x5	1	
Keypad board	M2x2	3	

## Stand

### Removing the stand

#### Prerequisites

1. Follow the procedure in [Before working inside your monitor.](#)

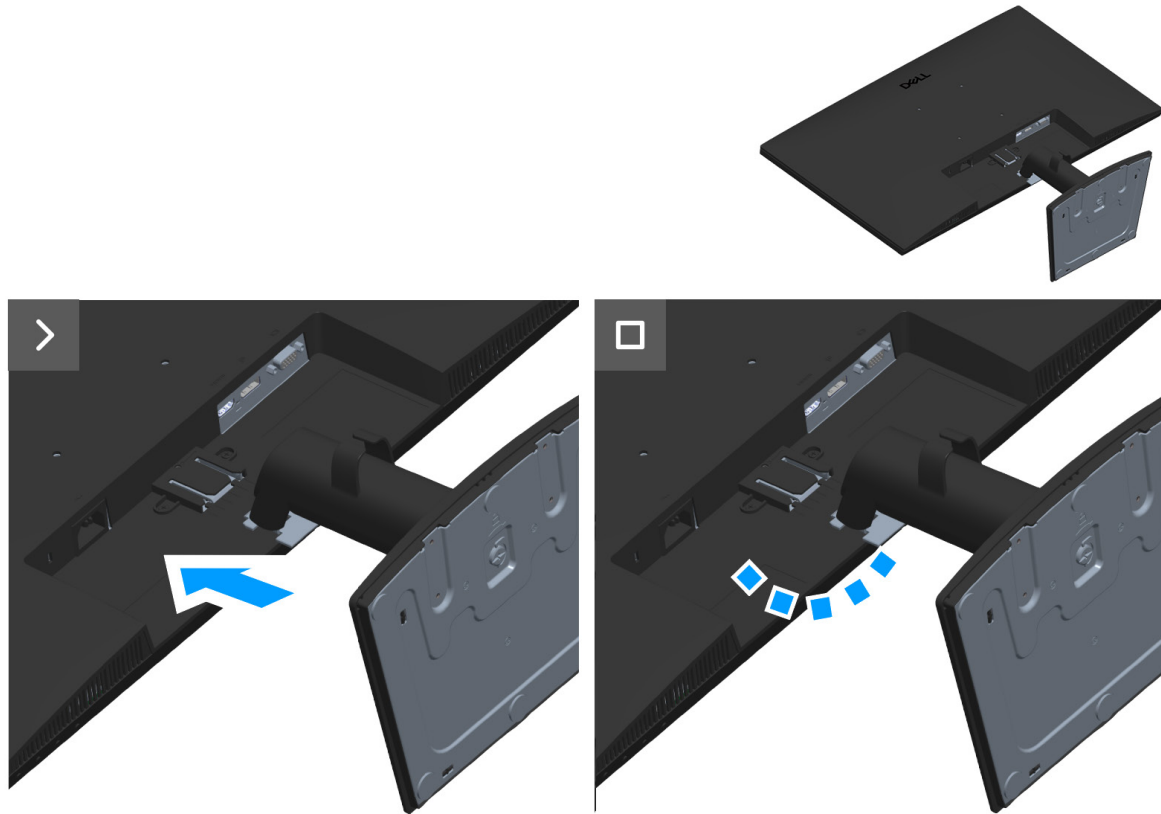


**Figure 1.** Removing the stand

#### Steps

1. Place the monitor on a clean, flat surface on a soft cloth or cushion.
2. Using a long screwdriver, press the release button.
3. While keeping the release button pressed, pull the stand out.
4. Open the screw handle at the bottom of the stand base and turn it anticlockwise to disassemble the stand.

## Installing the stand



**Figure 2.** Installing the stand

### Steps

1. Slide the tabs on the stand assembly into the slots on the monitor and press the stand assembly down to snap it into place.

### Next steps

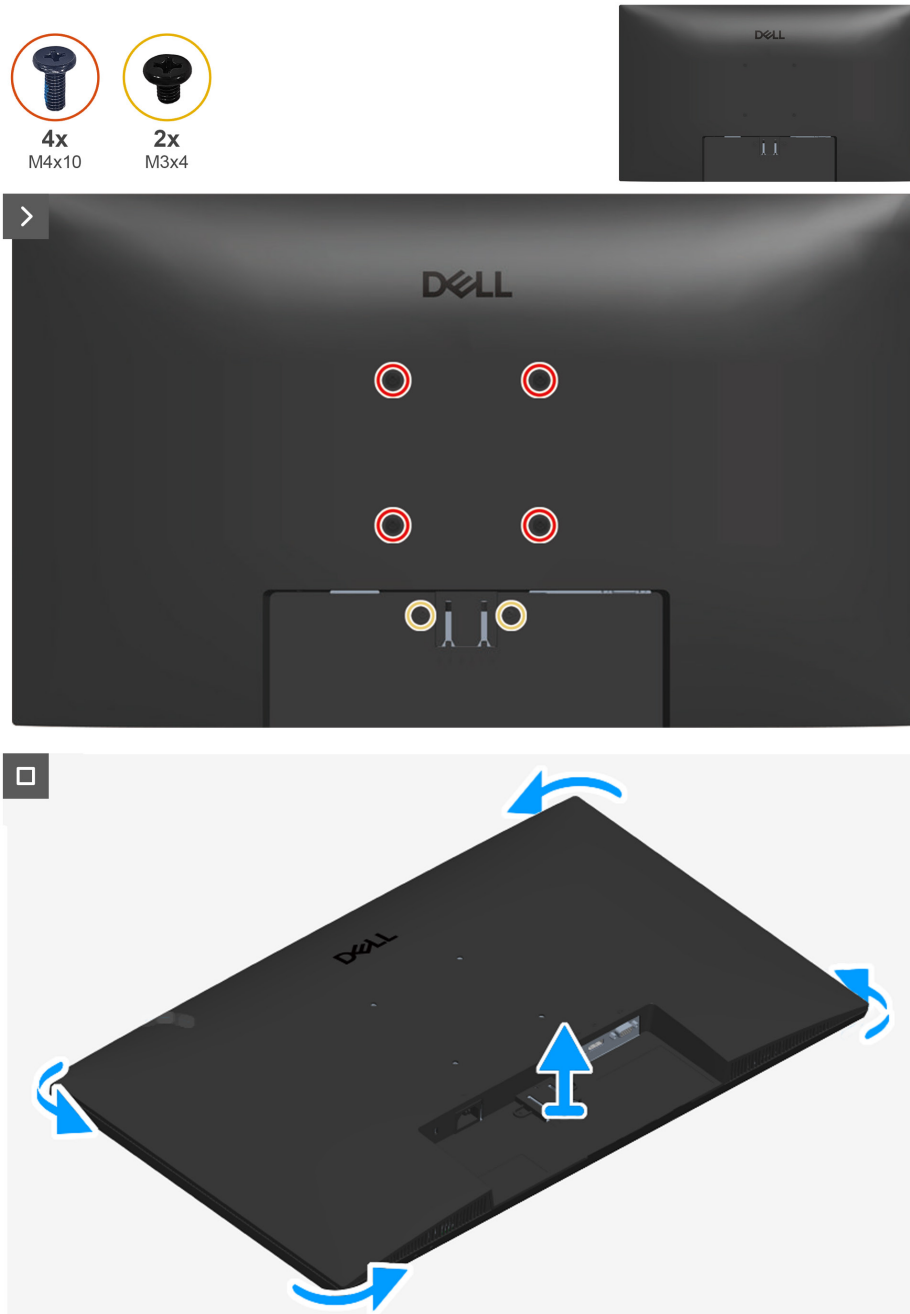
Follow the procedure in [After working inside your monitor.](#)

## Back cover

### Removing the back cover

#### Prerequisites

1. Follow the procedure in [Before working inside your monitor.](#)
2. Remove the [stand](#).

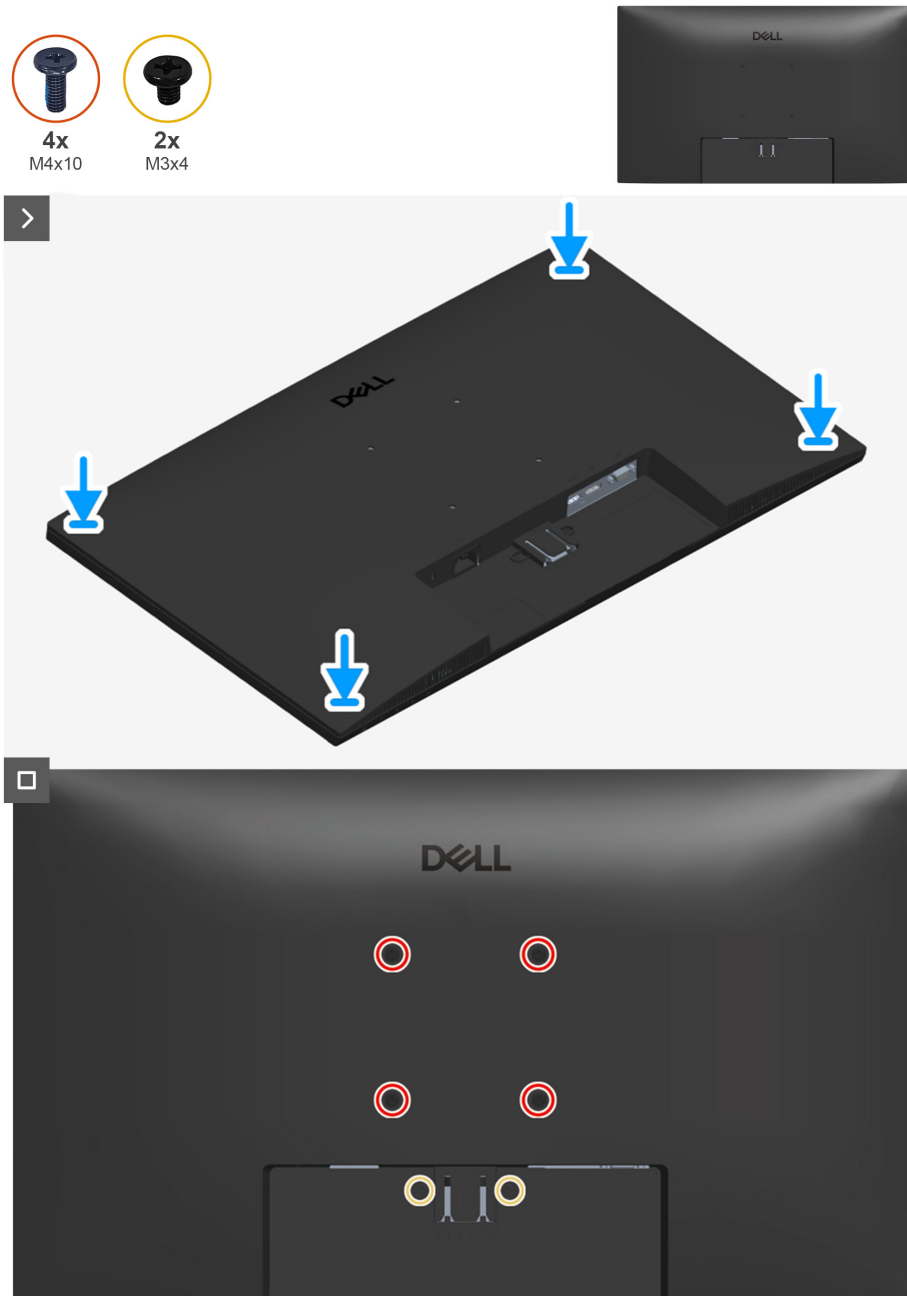


**Figure 3. Removing the back cover**

#### Steps

1. Remove the four screws (M4x10) and the two screws (M3x4) that secure the back cover to the chassis assembly.
2. Using the plastic scribe, pry the back cover starting from the bottom edge of the monitor.
3. Lift and remove the back cover from the monitor.

## Installing the back cover



**Figure 4. Installing the back cover**

### Steps

1. Align the screw holes on the back cover with the screw holes on the monitor, and gently press along the sides to snap the back cover into place.
2. Replace the four screws (M4x10) and the two screws (M3x4) to secure the back cover to the monitor.

### Next steps

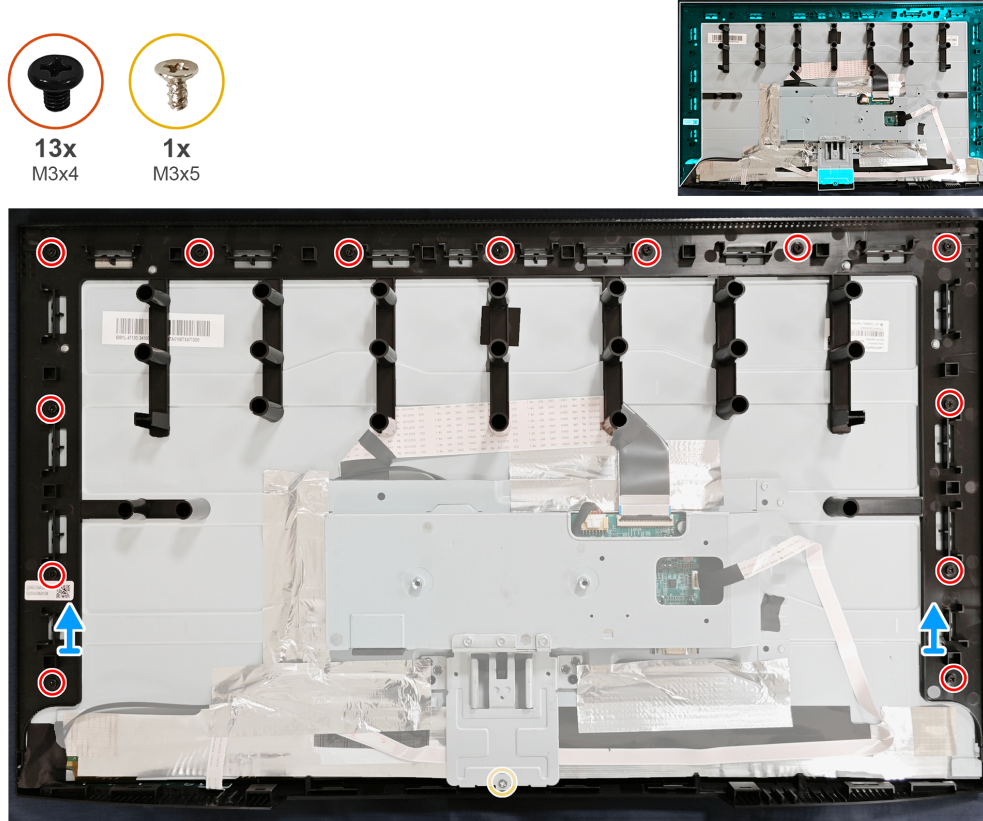
1. Install the [stand](#).
2. Follow the procedure in [After working inside your monitor](#).

## Middle frame

### Removing the middle frame

#### Prerequisites

1. Follow the procedure in [Before working inside your monitor.](#)
2. Remove the [stand](#).
3. Remove the [back cover](#).

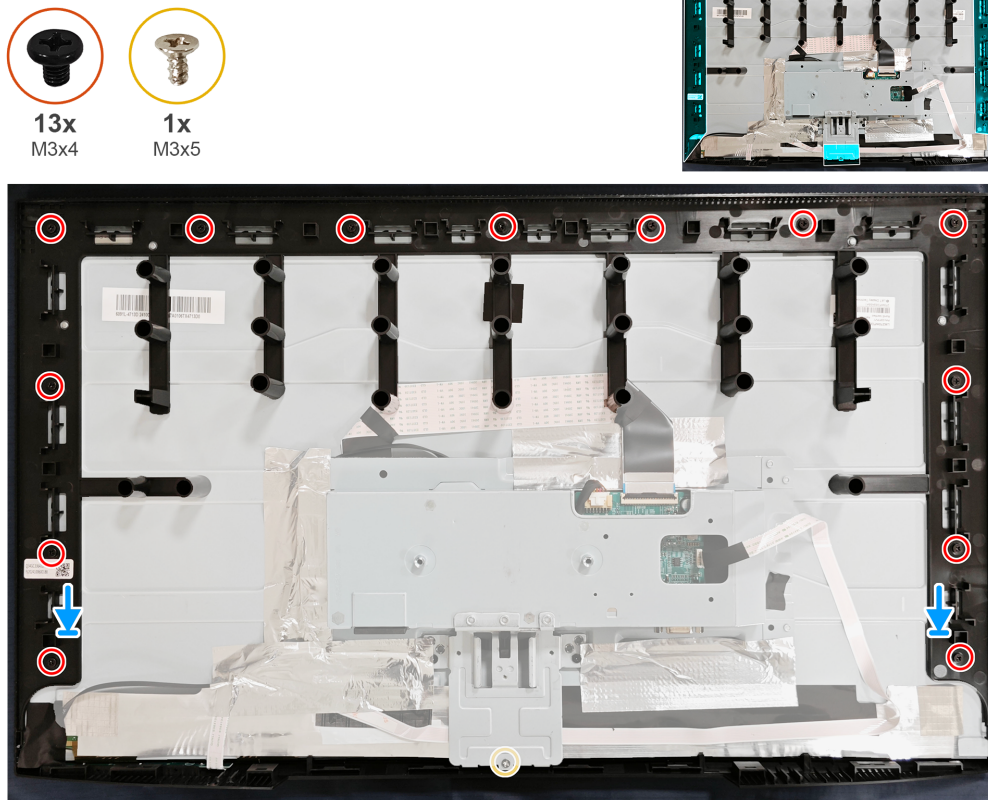


**Figure 5.** Removing the middle frame

#### Steps

1. Remove the thirteen screws (M3x4) on the middle frame.
2. Remove the screw (M3x5) on the underside of the middle frame.
3. Lift and remove the middle frame from the display panel.

## Installing the middle frame



**Figure 6.** Installing the middle frame

### Steps

1. Align the screw holes on the middle frame with the holes on the display panel and place it down.
2. Replace the thirteen screws (M3x4) on the middle frame.
3. Replace the screw (M3x5) on the underside of the middle frame.

### Next steps

1. Install the [back cover](#).
2. Install the [stand](#).
3. Follow the procedure in [After working inside your monitor](#).

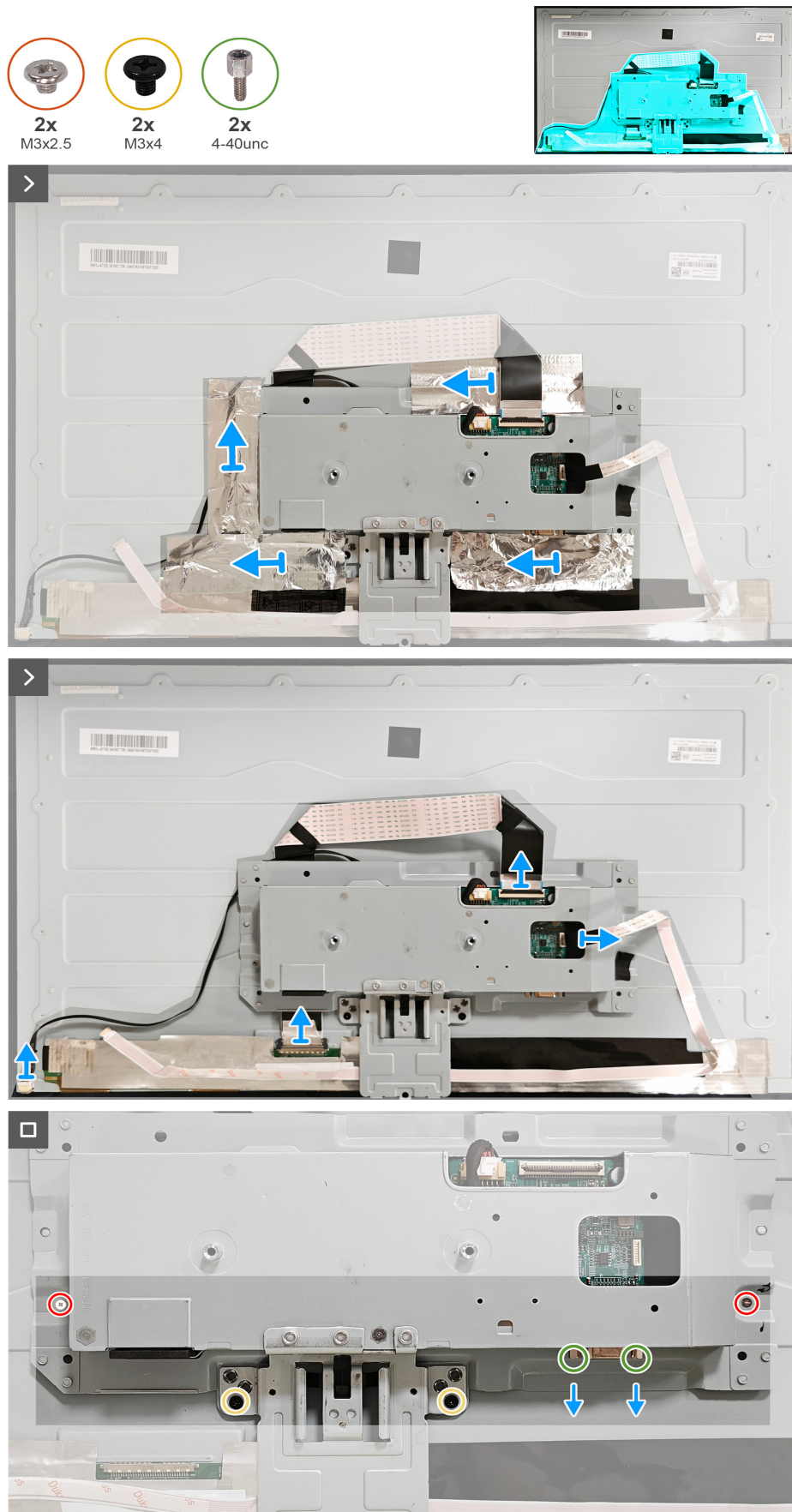
## Metal shield

### Removing the metal shield

#### Prerequisites

1. Follow the procedure in [Before working inside your monitor](#).
2. Remove the [stand](#).
3. Remove the [back cover](#).
4. Remove the [middle frame](#).





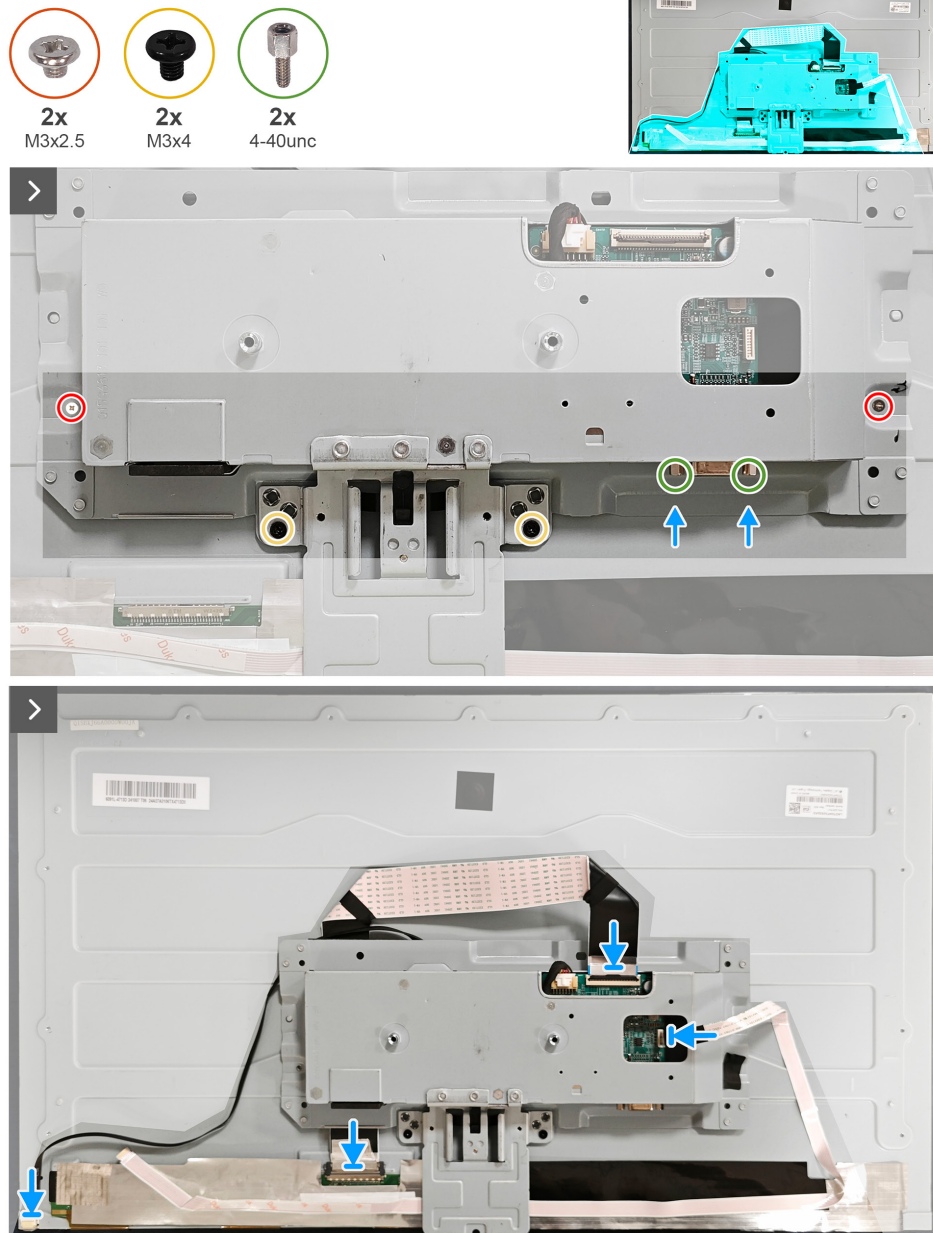
**Figure 7.** Removing the metal shield



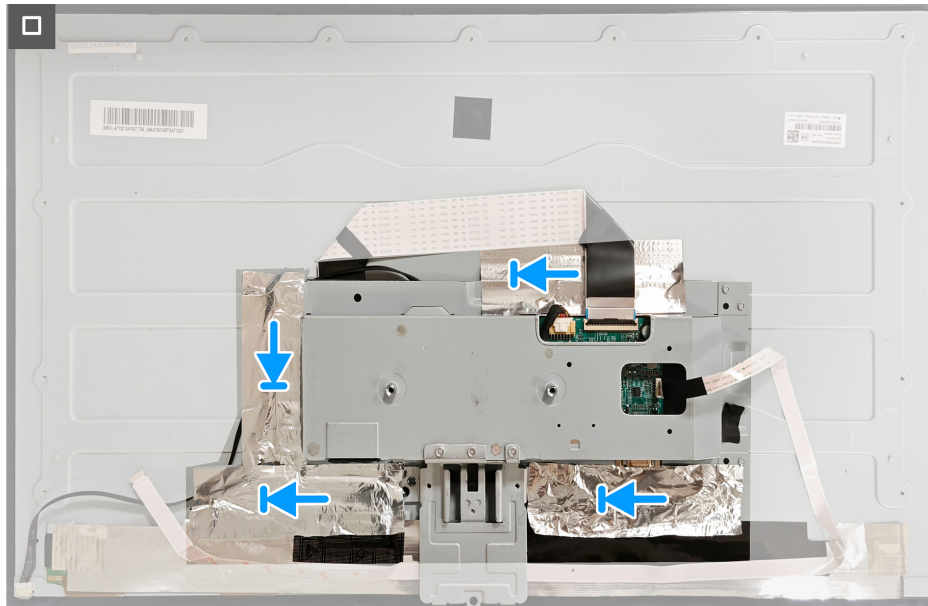
## Steps

1. Remove the four tapes on the metal shield.
2. Disconnect lightbar cable, LVDS cable and keypad cable on the connector of the panel and main board.
3. Remove the two screws (M3x2.5) and two screws (M3x4) that secure the metal shield to the panel.
4. Remove the two screws (4-40unc) that secure the VGA port to the metal shield.

## Installing the metal shield



**Figure 8.** Installing the metal shield



**Figure 9.** Installing the metal shield

#### Steps

1. Replace the two screws (M3x2.5) and two screws (M3x4) on the metal shield.
2. Replace the two screws (4-40unc) on the VGA port.
3. Connect lightbar cable, LVDS cable and keypad cable to the connectors of the panel and main board.
4. Replace the four tapes on the metal frame.

#### Next steps

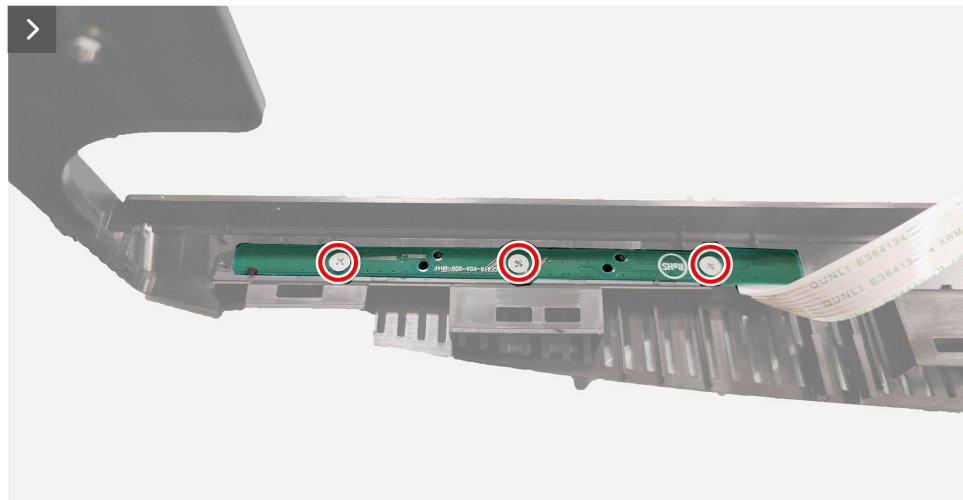
1. Install the [middle frame](#).
2. Install the [back cover](#).
3. Install the [stand](#).
4. Follow the procedure in [After working inside your monitor](#).

## Keypad board

### Removing the keypad board

#### Prerequisites

1. Follow the procedure in [Before working inside your monitor](#).
2. Remove the [stand](#).
3. Remove the [back cover](#).
4. Remove the [middle frame](#).



**Figure 10.** Removing the keypad board

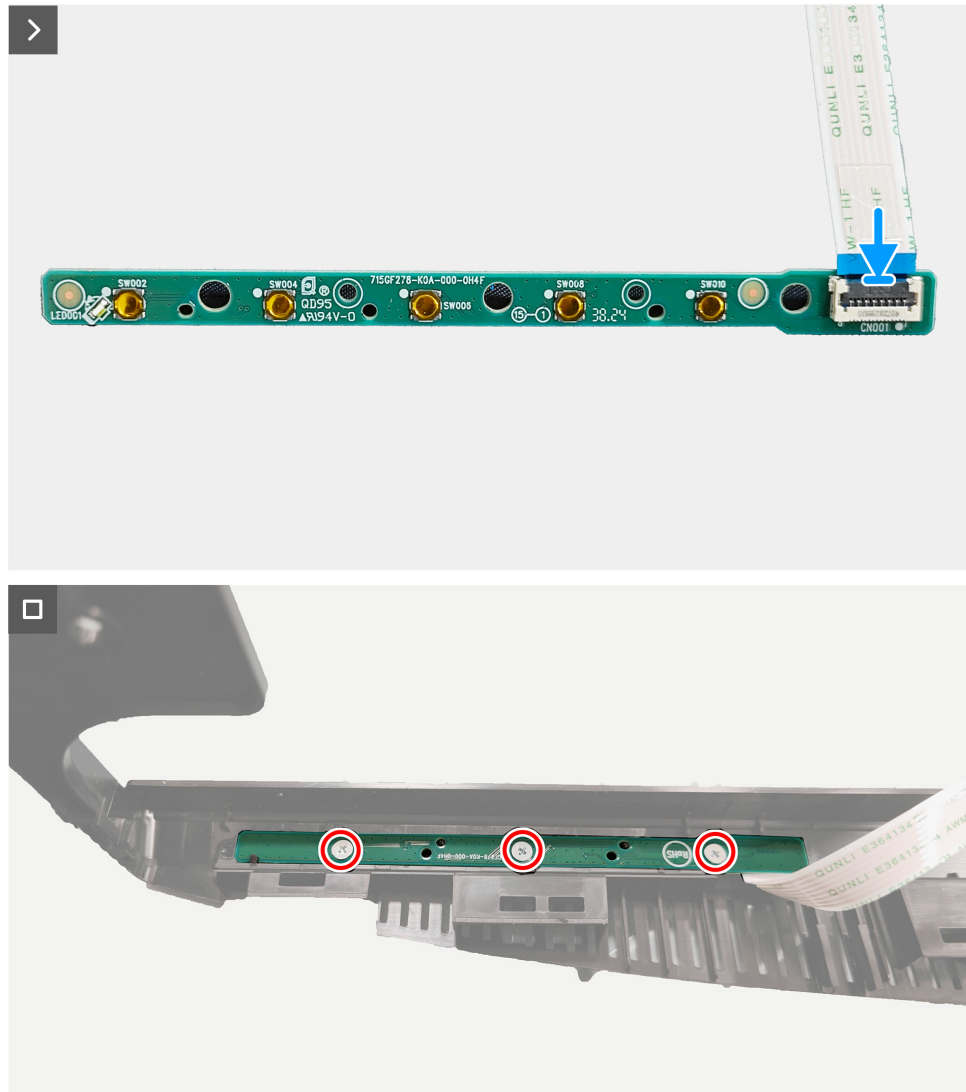
#### Steps

1. Remove the three screws (M2x2) on the keypad board on the underside of middle frame.
2. Disconnect keypad board cable from the connector on the keypad board.

## Installing the keypad board



3x  
M2x2



**Figure 11.** Installing the keypad board

### Steps

1. Connect keypad board cable to the connector on the keypad board.
2. Replace the three screws (M2x2) to secure the keypad board to the middle frame.

### Next steps

1. Install the [middle frame](#).
2. Install the [back cover](#).
3. Install the [stand](#).
4. Follow the procedure in [After working inside your monitor](#).

## System board and power board

### Removing the system board and power board

#### Prerequisites

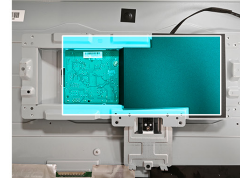
1. Follow the procedure in [Before working inside your monitor](#).
2. Remove the [stand](#).
3. Remove the [back cover](#).
4. Remove the [middle frame](#).
5. Remove the [metal shield](#).



3x  
M3x7

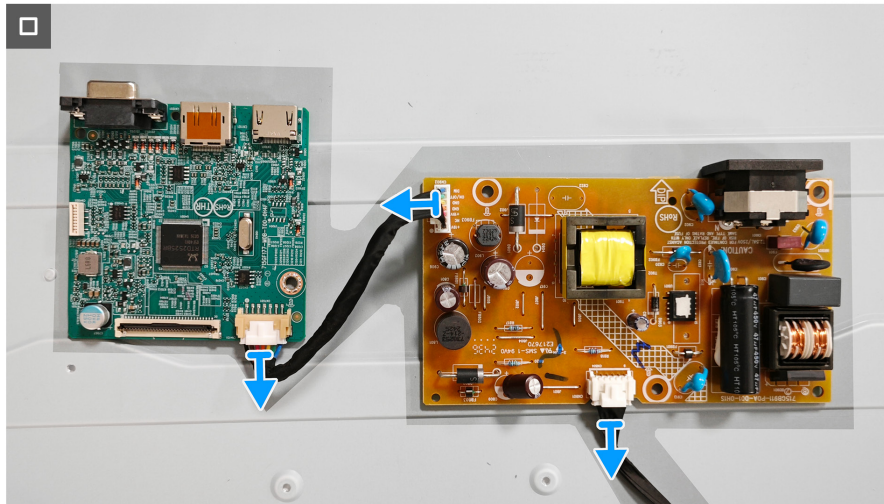


1x  
M4x8



**Figure 12.** Removing the system board and power board





**Figure 13.** Removing the system board and power board

#### Steps

1. Remove the mylar tape on the power board.
2. Remove the screw (M3x7) that secures the system board to the chassis.
3. Remove the two screws (M3x7) and the screw (M4x8) that secures the power board to the chassis.
4. Disconnect the two power cables from the connectors on the system board and the power board.

Installing the system board and power board

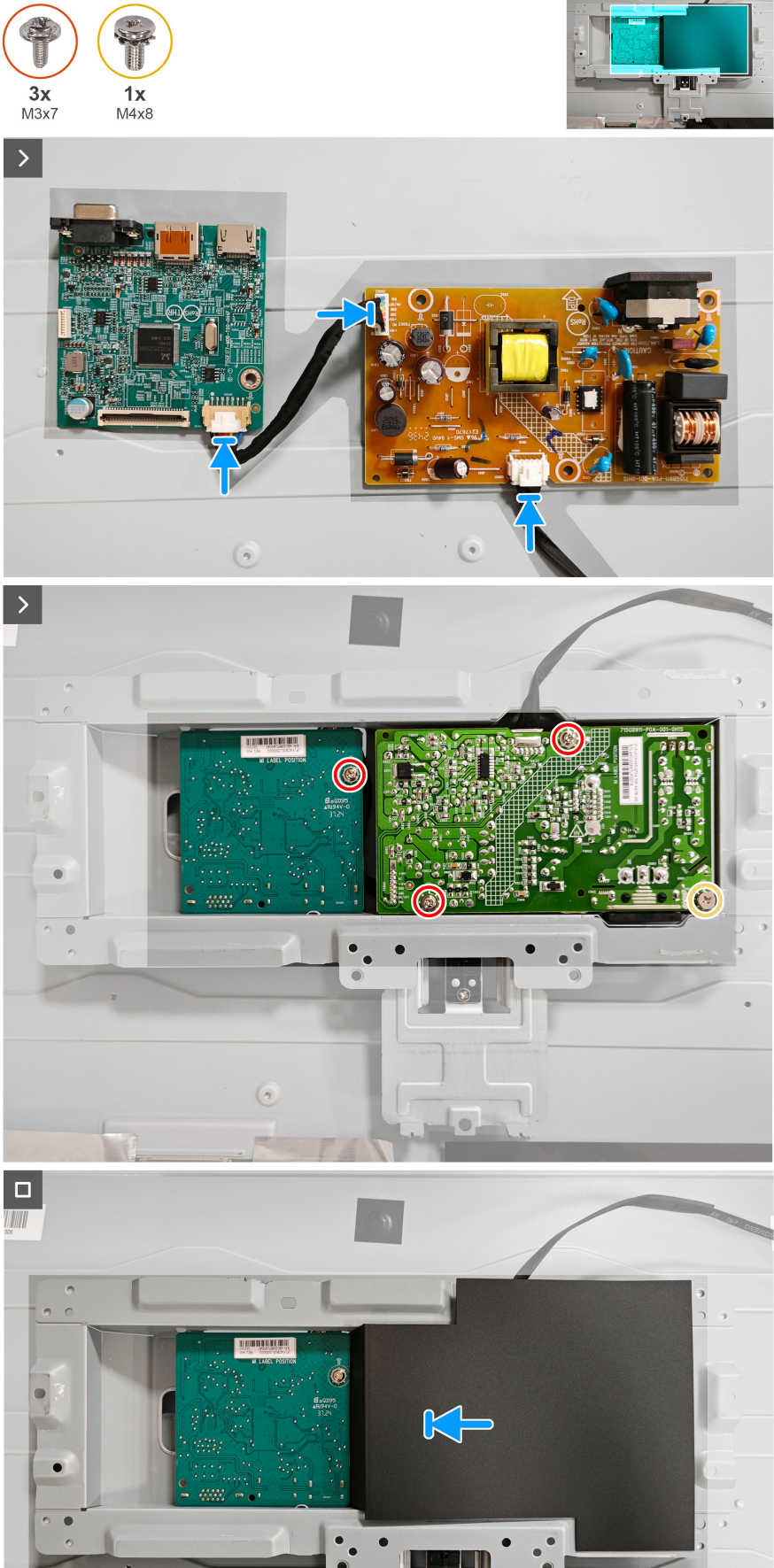


Figure 14. Installing the system board and power board

**Steps**

1. Replace the two power cables to the connectors on the system board and the power board.
2. Replace the screw (M3x7) on the power board to the chassis.
3. Replace the two screws (M3x7) and the screw (M4x8) on the system board to the chassis.
4. Adhere the mylar tape the power board.

**Next steps**

1. Install the [metal shield](#).
1. Install the [middle frame](#).
2. Install the [back cover](#).
3. Install the [stand](#).
4. Follow the procedure in [After working inside your monitor](#).



# Contacting Dell

To contact Dell for sales, technical support, or customer service issues, see [Contact Support at Dell Support Site](#).

- ① **NOTE:** Availability varies by country, region, or product, and some services may not be available in your country.
- ① **NOTE:** If you do not have an active Internet connection, you can find contact information about your purchase invoice, packing slip, bill, or Dell product catalog.