

Cable ID	Summary	Test Limit	Length	Headroom	Date / Time
001	PASS	TIA Cat 6 Channel	40 ft	10.1 dB (NEXT)	06/25/2024 08:44 AM
002	PASS	TIA Cat 6 Channel	40 ft	9.1 dB (NEXT)	06/25/2024 08:45 AM
003	PASS	TIA Cat 6 Channel	40 ft	10.7 dB (NEXT)	06/25/2024 08:45 AM
004	PASS	TIA Cat 6 Channel	40 ft	11.2 dB (NEXT)	06/25/2024 08:46 AM
005	PASS	TIA Cat 6 Channel	40 ft	10.0 dB (NEXT)	06/25/2024 08:46 AM
006	PASS	TIA Cat 6 Channel	40 ft	9.3 dB (NEXT)	06/25/2024 08:47 AM
007	PASS	TIA Cat 6 Channel	15 ft	10.0 dB (NEXT)	06/25/2024 08:47 AM
008	PASS	TIA Cat 6 Channel	15 ft	9.1 dB (NEXT)	06/25/2024 08:48 AM
009	PASS	TIA Cat 6 Channel	15 ft	10.0 dB (NEXT)	06/25/2024 08:48 AM
010	PASS	TIA Cat 6 Channel	15 ft	7.8 dB (NEXT)	06/25/2024 08:49 AM
011	PASS	TIA Cat 6 Channel	15 ft	9.7 dB (NEXT)	06/25/2024 08:49 AM
012	PASS	TIA Cat 6 Channel	15 ft	9.7 dB (NEXT)	06/25/2024 08:49 AM
013	PASS	TIA Patch Cord Cat6 10.0m	26 ft	5.3 dB (NEXT)	06/25/2024 08:57 AM
014	PASS	TIA Patch Cord Cat6 10.0m	26 ft	4.3 dB (NEXT)	06/25/2024 08:57 AM
015	PASS	TIA Patch Cord Cat6 10.0m	26 ft	4.4 dB (NEXT)	06/25/2024 08:58 AM
016	PASS	TIA Patch Cord Cat6 10.0m	26 ft	2.1 dB (NEXT)	06/25/2024 08:58 AM
017	PASS	TIA Patch Cord Cat6 10.0m	26 ft	4.6 dB (NEXT)	06/25/2024 08:59 AM
018	PASS	TIA Patch Cord Cat6 10.0m	26 ft	3.5 dB (NEXT)	06/25/2024 09:00 AM
019	PASS	TIA Patch Cord Cat6 10.0m	1 ft	6.6 dB (NEXT)	06/25/2024 09:00 AM
020	PASS	TIA Patch Cord Cat6 10.0m	1 ft	5.8 dB (NEXT)	06/25/2024 09:01 AM
021	PASS	TIA Patch Cord Cat6 10.0m	1 ft	4.2 dB (NEXT)	06/25/2024 09:01 AM
022	PASS	TIA Patch Cord Cat6 10.0m	1 ft	4.4 dB (NEXT)	06/25/2024 09:02 AM
023	PASS	TIA Patch Cord Cat6 10.0m	1 ft	4.7 dB (NEXT)	06/25/2024 09:02 AM
024	PASS	TIA Patch Cord Cat6 10.0m	1 ft	4.5 dB (NEXT)	06/25/2024 09:03 AM

Total Length:	492 ft
Number of Reports:	24
Number of Passing Reports:	24
Number of Failing Reports:	0
Number of Warning Reports:	0
Documentation Only:	0



Cable ID: 001

Test Limit: TIA Cat 6 Channel

Limits Version: V7.9

Date / Time: 06/25/2024 08:44:18 AM

Operator: SPENCER WARD

Headroom 10.1 dB (NEXT 3,6-7,8)

Cable Type: Cat 6 U/UTP

NVP: 69.0%

Main: Versiv

S/N: 1943100

Software Version: V6.11 Build 2

Calibration Date: 01/25/2024

Adapter: DSX-8000 (DSX-CHA804)

S/N: 19374308

Test Summary: PASS

Remote: Versiv

S/N: 1943152

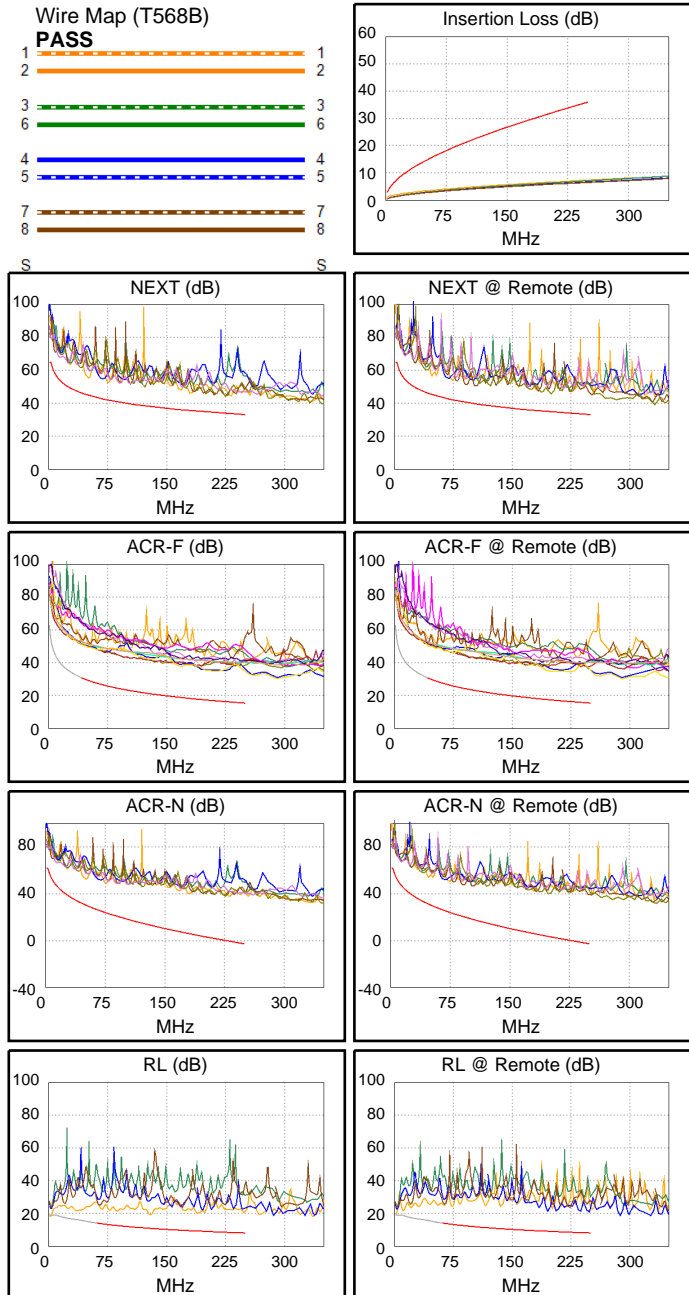
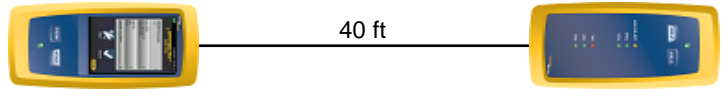
Software Version: V6.11 Build 2

Calibration Date: 01/25/2024

Adapter: DSX-8000R (DSX-CHA804)

S/N: 19372906

Length (ft), Limit 328	[Pair 1,2]	40
Prop. Delay (ns), Limit 555	[Pair 3,6]	62
Delay Skew (ns), Limit 50	[Pair 3,6]	3
Resistance (ohms)	[Pair 1,2]	23.03
Insertion Loss Margin (dB)	[Pair 1,2]	28.6
Frequency (MHz)	[Pair 1,2]	250.0
Limit (dB)	[Pair 1,2]	35.9



Worst Case Margin Worst Case Value

PASS	MAIN	SR	MAIN	SR
Worst Pair	3,6-7,8	3,6-4,5	3,6-7,8	3,6-4,5
NEXT (dB)	10.1	10.7	10.1	12.0
Freq. (MHz)	226.0	103.5	226.0	250.0
Limit (dB)	33.9	39.7	33.9	33.1
Worst Pair	3,6	4,5	3,6	3,6
PS NEXT (dB)	9.6	11.3	9.6	13.3
Freq. (MHz)	226.0	104.0	226.0	250.0
Limit (dB)	30.9	36.8	30.9	30.2

PASS	MAIN	SR	MAIN	SR
Worst Pair	7,8-1,2	7,8-1,2	7,8-1,2	7,8-1,2
ACR-F (dB)	18.0	17.6	19.4	18.0
Freq. (MHz)	204.0	204.0	250.0	221.0
Limit (dB)	17.1	17.1	15.3	16.4
Worst Pair	4,5	3,6	7,8	7,8
PS ACR-F (dB)	18.8	19.3	20.2	21.3
Freq. (MHz)	1.0	1.0	228.5	250.0
Limit (dB)	60.3	60.3	13.1	12.3

N/A	MAIN	SR	MAIN	SR
Worst Pair	1,2-4,5	3,6-4,5	1,2-3,6	3,6-4,5
ACR-N (dB)	17.3	16.9	38.3	41.3
Freq. (MHz)	2.9	2.0	231.5	250.0
Limit (dB)	61.6	62.0	-0.7	-2.8
Worst Pair	4,5	4,5	3,6	3,6
PS ACR-N (dB)	16.3	16.1	36.8	42.2
Freq. (MHz)	2.9	2.8	226.0	250.0
Limit (dB)	58.6	58.6	-2.9	-5.8

PASS	MAIN	SR	MAIN	SR
Worst Pair	1,2	1,2	1,2	4,5
RL (dB)	5.8	10.1	8.1	12.3
Freq. (MHz)	37.8	45.0	129.5	247.5
Limit (dB)	16.1	15.5	10.9	8.1

Compliant Network Standards:
 10BASE-T 100BASE-TX 100BASE-T4
 1000BASE-T 2.5GBASE-T 5GBASE-T
 ATM-25 ATM-51 ATM-155
 100VG-AnyLan TR-4 TR-16 Active
 TR-16 Passive



Cable ID: 002

Test Limit: TIA Cat 6 Channel

Limits Version: V7.9

Date / Time: 06/25/2024 08:45:06 AM

Operator: SPENCER WARD

Headroom 9.1 dB (NEXT 1,2-3,6)

Cable Type: Cat 6 U/UTP

NVP: 69.0%

Main: Versiv

S/N: 1943100

Software Version: V6.11 Build 2

Calibration Date: 01/25/2024

Adapter: DSX-8000 (DSX-CHA804)

S/N: 19374308

Test Summary: PASS

Remote: Versiv

S/N: 1943152

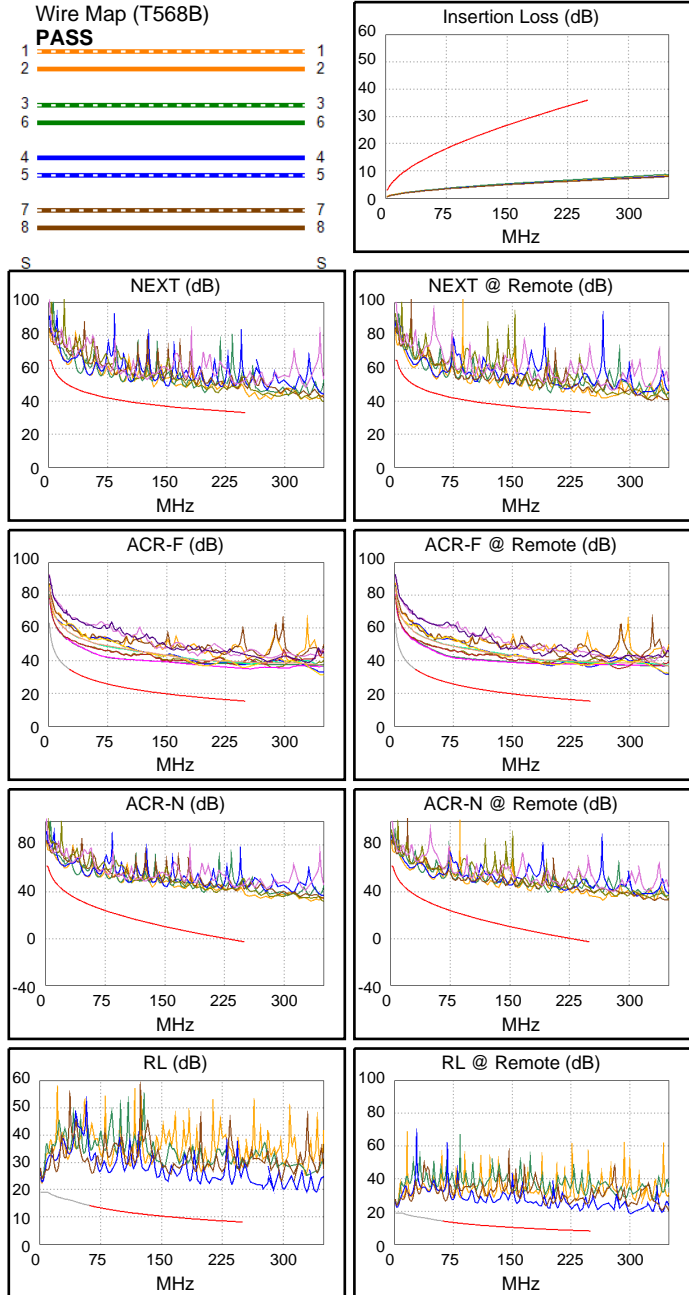
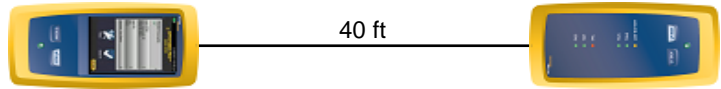
Software Version: V6.11 Build 2

Calibration Date: 01/25/2024

Adapter: DSX-8000R (DSX-CHA804)

S/N: 19372906

Length (ft), Limit 328	[Pair 1,2]	40
Prop. Delay (ns), Limit 555	[Pair 3,6]	62
Delay Skew (ns), Limit 50	[Pair 3,6]	3
Resistance (ohms)	[Pair 1,2]	8.59
Insertion Loss Margin (dB)	[Pair 3,6]	28.8
Frequency (MHz)	[Pair 3,6]	250.0
Limit (dB)	[Pair 3,6]	35.9



Worst Case Margin Worst Case Value

PASS	MAIN	SR	MAIN	SR
Worst Pair	1,2-4,5	1,2-3,6	3,6-7,8	1,2-3,6
NEXT (dB)	10.3	9.1	10.8	10.6
Freq. (MHz)	39.3	53.8	214.5	250.0
Limit (dB)	46.8	44.5	34.3	33.1
Worst Pair	1,2	1,2	3,6	3,6
PS NEXT (dB)	10.3	8.9	11.0	11.0
Freq. (MHz)	52.5	53.5	214.0	250.0
Limit (dB)	41.9	41.7	31.3	30.2

PASS	MAIN	SR	MAIN	SR
Worst Pair	4,5-1,2	4,5-1,2	4,5-1,2	1,2-4,5
ACR-F (dB)	16.1	16.0	19.3	19.5
Freq. (MHz)	68.3	77.5	250.0	250.0
Limit (dB)	26.6	25.5	15.3	15.3
Worst Pair	4,5	4,5	4,5	4,5
PS ACR-F (dB)	16.3	15.7	19.5	19.4
Freq. (MHz)	1.0	1.0	246.5	240.0
Limit (dB)	60.3	60.3	12.4	12.7

N/A	MAIN	SR	MAIN	SR
Worst Pair	1,2-3,6	1,2-3,6	1,2-3,6	1,2-3,6
ACR-N (dB)	14.6	13.0	41.8	39.4
Freq. (MHz)	2.8	2.9	250.0	250.0
Limit (dB)	61.6	61.6	-2.8	-2.8
Worst Pair	1,2	1,2	3,6	3,6
PS ACR-N (dB)	15.8	14.7	40.7	39.9
Freq. (MHz)	3.3	3.4	240.5	250.0
Limit (dB)	58.4	58.0	-4.7	-5.8

PASS	MAIN	SR	MAIN	SR
Worst Pair	7,8	4,5	4,5	4,5
RL (dB)	12.0	11.9	12.7	11.9
Freq. (MHz)	65.3	237.5	197.0	237.5
Limit (dB)	13.9	8.2	9.1	8.2

Compliant Network Standards:
 10BASE-T 100BASE-TX 100BASE-T4
 1000BASE-T 2.5GBASE-T 5GBASE-T
 ATM-25 ATM-51 ATM-155
 100VG-AnyLan TR-4 TR-16 Active
 TR-16 Passive



Cable ID: 003

Test Limit: TIA Cat 6 Channel

Limits Version: V7.9

Date / Time: 06/25/2024 08:45:39 AM

Operator: SPENCER WARD

Headroom 10.7 dB (NEXT 1,2-7,8)

Cable Type: Cat 6 U/UTP

NVP: 69.0%

Main: Versiv

S/N: 1943100

Software Version: V6.11 Build 2

Calibration Date: 01/25/2024

Adapter: DSX-8000 (DSX-CHA804)

S/N: 19374308

Test Summary: PASS

Remote: Versiv

S/N: 1943152

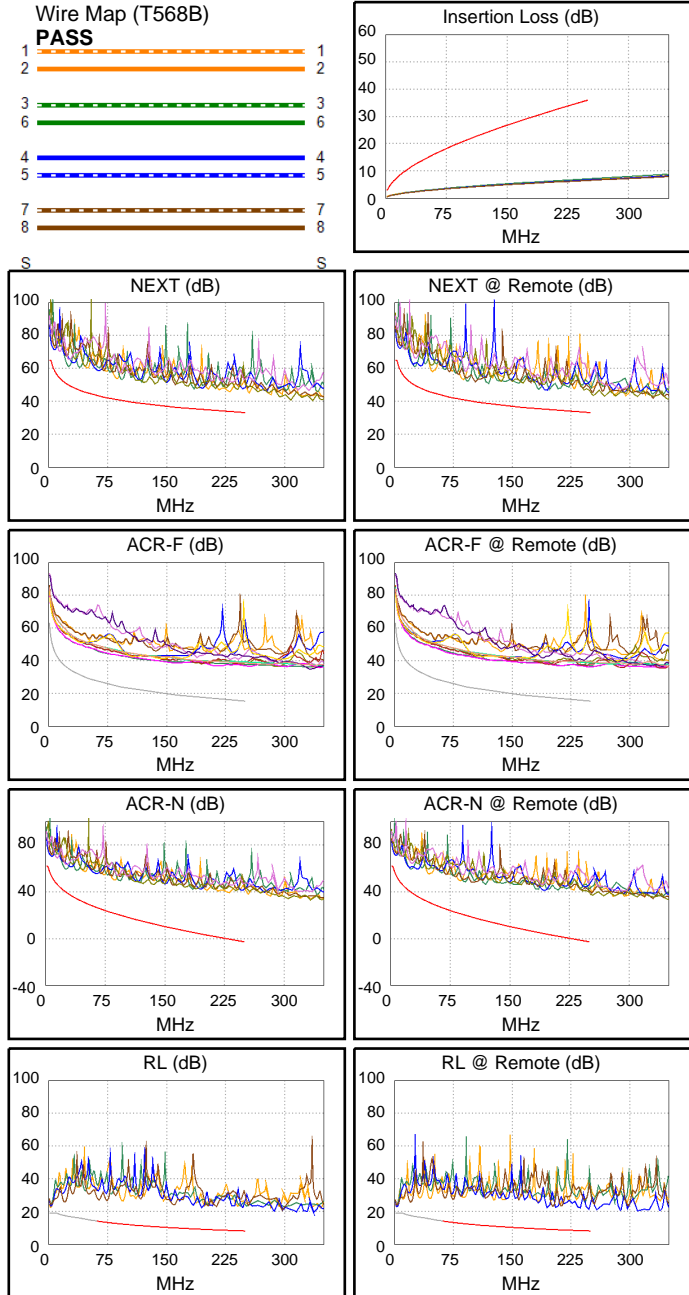
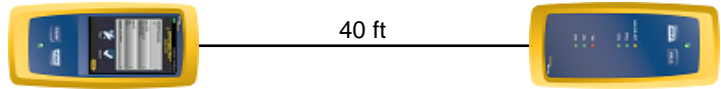
Software Version: V6.11 Build 2

Calibration Date: 01/25/2024

Adapter: DSX-8000R (DSX-CHA804)

S/N: 19372906

Length (ft), Limit 328	[Pair 1,2]	40
Prop. Delay (ns), Limit 555	[Pair 3,6]	62
Delay Skew (ns), Limit 50	[Pair 3,6]	3
Resistance (ohms)	[Pair 1,2]	8.56
Insertion Loss Margin (dB)	[Pair 3,6]	28.8
Frequency (MHz)	[Pair 3,6]	250.0
Limit (dB)	[Pair 3,6]	35.9



Worst Case Margin Worst Case Value

PASS	MAIN	SR	MAIN	SR
Worst Pair	1,2-7,8	1,2-7,8	1,2-3,6	3,6-7,8
NEXT (dB)	10.7	10.8	12.2	12.6
Freq. (MHz)	4.3	3.4	230.5	250.0
Limit (dB)	62.6	64.2	33.7	33.1
Worst Pair	1,2	1,2	3,6	3,6
PS NEXT (dB)	11.3	10.6	12.4	12.6
Freq. (MHz)	3.6	3.3	227.0	250.0
Limit (dB)	61.2	62.0	30.9	30.2

PASS	MAIN	SR	MAIN	SR
Worst Pair	1,2-4,5	4,5-1,2	1,2-4,5	4,5-1,2
ACR-F (dB)	17.5	17.3	21.0	20.9
Freq. (MHz)	22.4	22.4	246.5	246.5
Limit (dB)	36.3	36.3	15.4	15.4
Worst Pair	1,2	4,5	4,5	4,5
PS ACR-F (dB)	17.7	17.0	20.2	21.1
Freq. (MHz)	2.6	1.0	245.5	245.5
Limit (dB)	51.9	60.3	12.5	12.5

N/A	MAIN	SR	MAIN	SR
Worst Pair	1,2-7,8	1,2-7,8	1,2-3,6	3,6-7,8
ACR-N (dB)	14.0	13.8	39.8	42.1
Freq. (MHz)	3.3	3.1	231.0	250.0
Limit (dB)	60.9	61.2	-0.6	-2.8
Worst Pair	1,2	1,2	3,6	3,6
PS ACR-N (dB)	14.3	13.5	41.4	41.5
Freq. (MHz)	3.6	3.3	240.5	250.0
Limit (dB)	57.4	58.4	-4.7	-5.8

PASS	MAIN	SR	MAIN	SR
Worst Pair	4,5	4,5	4,5	4,5
RL (dB)	12.9	12.9	12.9	12.9
Freq. (MHz)	195.5	247.0	195.5	247.0
Limit (dB)	9.1	8.1	9.1	8.1

Compliant Network Standards:
 10BASE-T 100BASE-TX 100BASE-T4
 1000BASE-T 2.5GBASE-T 5GBASE-T
 ATM-25 ATM-51 ATM-155
 100VG-AnyLan TR-4 TR-16 Active
 TR-16 Passive



Cable ID: 004

Test Limit: TIA Cat 6 Channel

Limits Version: V7.9

Date / Time: 06/25/2024 08:46:13 AM

Operator: SPENCER WARD

Headroom 11.2 dB (NEXT 3,6-7,8)

Cable Type: Cat 6 U/UTP

NVP: 69.0%

Main: Versiv

S/N: 1943100

Software Version: V6.11 Build 2

Calibration Date: 01/25/2024

Adapter: DSX-8000 (DSX-CHA804)

S/N: 19374308

Test Summary: PASS

Remote: Versiv

S/N: 1943152

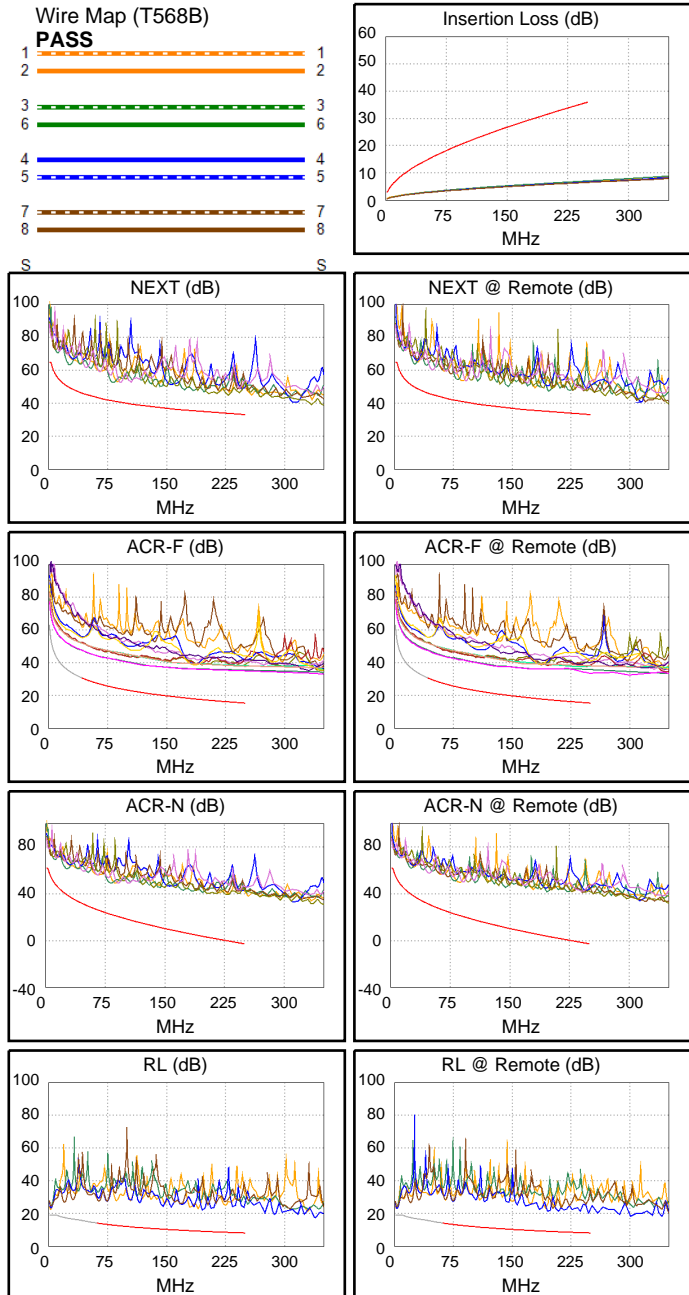
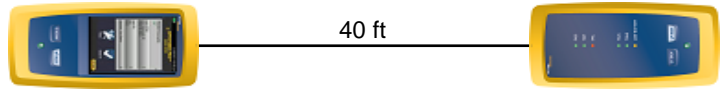
Software Version: V6.11 Build 2

Calibration Date: 01/25/2024

Adapter: DSX-8000R (DSX-CHA804)

S/N: 19372906

Length (ft), Limit 328	[Pair 1,2]	40
Prop. Delay (ns), Limit 555	[Pair 3,6]	62
Delay Skew (ns), Limit 50	[Pair 3,6]	3
Resistance (ohms)	[Pair 1,2]	8.82
Insertion Loss Margin (dB)	[Pair 3,6]	28.8
Frequency (MHz)	[Pair 3,6]	250.0
Limit (dB)	[Pair 3,6]	35.9



Worst Case Margin Worst Case Value

PASS	MAIN	SR	MAIN	SR
Worst Pair	3,6-7,8	1,2-4,5	3,6-7,8	1,2-4,5
NEXT (dB)	11.2	12.2	11.2	12.2
Freq. (MHz)	229.0	197.5	229.0	197.5
Limit (dB)	33.8	34.9	33.8	34.9
Worst Pair	3,6	1,2	3,6	3,6
PS NEXT (dB)	10.7	12.8	10.7	13.0
Freq. (MHz)	229.0	198.5	229.0	229.0
Limit (dB)	30.8	31.9	30.8	30.8

PASS	MAIN	SR	MAIN	SR
Worst Pair	1,2-4,5	4,5-1,2	4,5-1,2	4,5-1,2
ACR-F (dB)	15.0	14.8	18.3	18.2
Freq. (MHz)	5.1	3.4	250.0	250.0
Limit (dB)	49.1	52.7	15.3	15.3
Worst Pair	4,5	4,5	4,5	4,5
PS ACR-F (dB)	16.1	15.7	19.1	19.2
Freq. (MHz)	6.5	1.0	250.0	245.5
Limit (dB)	44.0	60.3	12.3	12.5

N/A	MAIN	SR	MAIN	SR
Worst Pair	4,5-7,8	3,6-4,5	3,6-7,8	3,6-4,5
ACR-N (dB)	17.8	17.6	39.3	42.9
Freq. (MHz)	3.1	5.1	229.0	242.0
Limit (dB)	61.2	56.8	-0.4	-1.9
Worst Pair	4,5	4,5	3,6	3,6
PS ACR-N (dB)	18.2	17.2	38.1	40.4
Freq. (MHz)	5.5	3.5	229.0	229.0
Limit (dB)	53.6	57.7	-3.3	-3.3

PASS	MAIN	SR	MAIN	SR
Worst Pair	4,5	4,5	4,5	4,5
RL (dB)	12.7	11.6	12.7	12.2
Freq. (MHz)	197.0	197.0	197.0	248.0
Limit (dB)	9.1	9.1	9.1	8.1

Compliant Network Standards:
 10BASE-T 100BASE-TX 100BASE-T4
 1000BASE-T 2.5GBASE-T 5GBASE-T
 ATM-25 ATM-51 ATM-155
 100VG-AnyLan TR-4 TR-16 Active
 TR-16 Passive



Cable ID: 005

Test Limit: TIA Cat 6 Channel

Limits Version: V7.9

Date / Time: 06/25/2024 08:46:46 AM

Operator: SPENCER WARD

Headroom 10.0 dB (NEXT 1,2-4,5)

Cable Type: Cat 6 U/UTP

NVP: 69.0%

Main: Versiv

S/N: 1943100

Software Version: V6.11 Build 2

Calibration Date: 01/25/2024

Adapter: DSX-8000 (DSX-CHA804)

S/N: 19374308

Test Summary: PASS

Remote: Versiv

S/N: 1943152

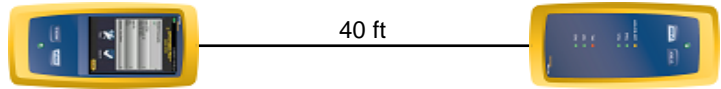
Software Version: V6.11 Build 2

Calibration Date: 01/25/2024

Adapter: DSX-8000R (DSX-CHA804)

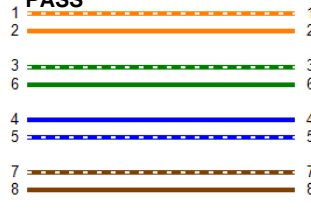
S/N: 19372906

Length (ft), Limit 328	[Pair 1,2]	40
Prop. Delay (ns), Limit 555	[Pair 3,6]	62
Delay Skew (ns), Limit 50	[Pair 3,6]	3
Resistance (ohms)	[Pair 1,2]	6.09
Insertion Loss Margin (dB)	[Pair 3,6]	28.8
Frequency (MHz)	[Pair 3,6]	250.0
Limit (dB)	[Pair 3,6]	35.9

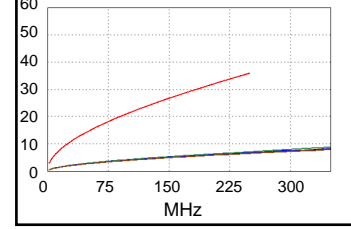


Wire Map (T568B)

PASS

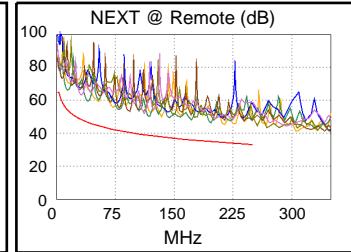
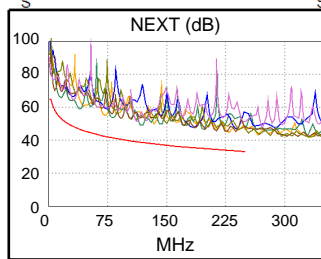


Insertion Loss (dB)

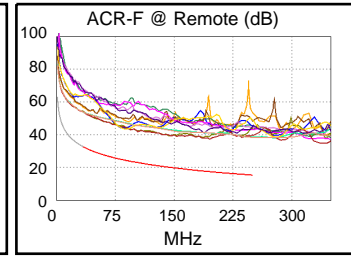
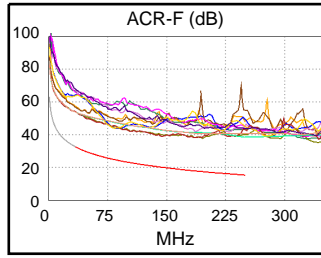


Worst Case Margin Worst Case Value

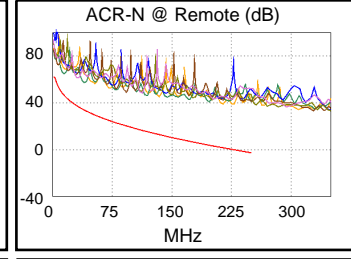
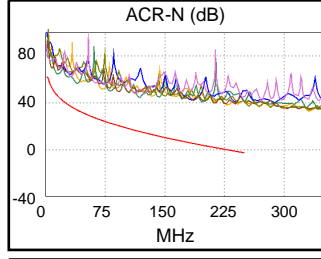
PASS	MAIN	SR	MAIN	SR
Worst Pair	1,2-4,5	1,2-3,6	1,2-3,6	1,2-3,6
NEXT (dB)	10.0	11.0	10.9	11.5
Freq. (MHz)	118.5	214.0	229.5	227.0
Limit (dB)	38.7	34.3	33.8	33.8
Worst Pair	3,6	3,6	3,6	3,6
PS NEXT (dB)	10.4	11.2	10.4	11.3
Freq. (MHz)	227.5	213.5	227.5	214.0
Limit (dB)	30.9	31.4	30.9	31.3



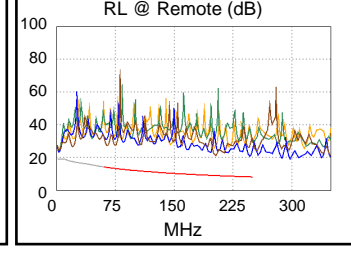
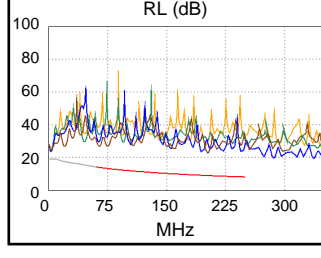
PASS	MAIN	SR	MAIN	SR
Worst Pair	4,5-3,6	4,5-3,6	3,6-4,5	4,5-3,6
ACR-F (dB)	18.6	18.9	20.3	19.9
Freq. (MHz)	144.5	104.5	195.5	195.5
Limit (dB)	20.1	22.9	17.4	17.4
Worst Pair	4,5	4,5	4,5	3,6
PS ACR-F (dB)	19.2	19.2	22.3	21.0
Freq. (MHz)	1.0	1.0	238.5	187.0
Limit (dB)	60.3	60.3	12.7	14.8



N/A	MAIN	SR	MAIN	SR
Worst Pair	3,6-4,5	1,2-4,5	1,2-3,6	1,2-3,6
ACR-N (dB)	16.4	16.0	38.3	38.7
Freq. (MHz)	6.9	3.0	229.5	227.0
Limit (dB)	54.0	61.5	-0.4	-0.1
Worst Pair	4,5	4,5	3,6	3,6
PS ACR-N (dB)	17.4	16.2	37.7	40.9
Freq. (MHz)	5.9	3.0	227.5	240.5
Limit (dB)	53.0	58.5	-3.1	-4.7



PASS	MAIN	SR	MAIN	SR
Worst Pair	7,8	7,8	7,8	4,5
RL (dB)	12.8	12.1	13.9	12.6
Freq. (MHz)	64.3	203.0	202.5	246.5
Limit (dB)	13.9	8.9	8.9	8.1



Compliant Network Standards:
 10BASE-T 100BASE-TX 100BASE-T4
 1000BASE-T 2.5GBASE-T 5GBASE-T
 ATM-25 ATM-51 ATM-155
 100VG-AnyLan TR-4 TR-16 Active
 TR-16 Passive



Cable ID: 006

Test Limit: TIA Cat 6 Channel

Limits Version: V7.9

Date / Time: 06/25/2024 08:47:15 AM

Operator: SPENCER WARD

Headroom 9.3 dB (NEXT 1,2-3,6)

Cable Type: Cat 6 U/UTP

NVP: 69.0%

Main: Versiv

S/N: 1943100

Software Version: V6.11 Build 2

Calibration Date: 01/25/2024

Adapter: DSX-8000 (DSX-CHA804)

S/N: 19374308

Test Summary: PASS

Remote: Versiv

S/N: 1943152

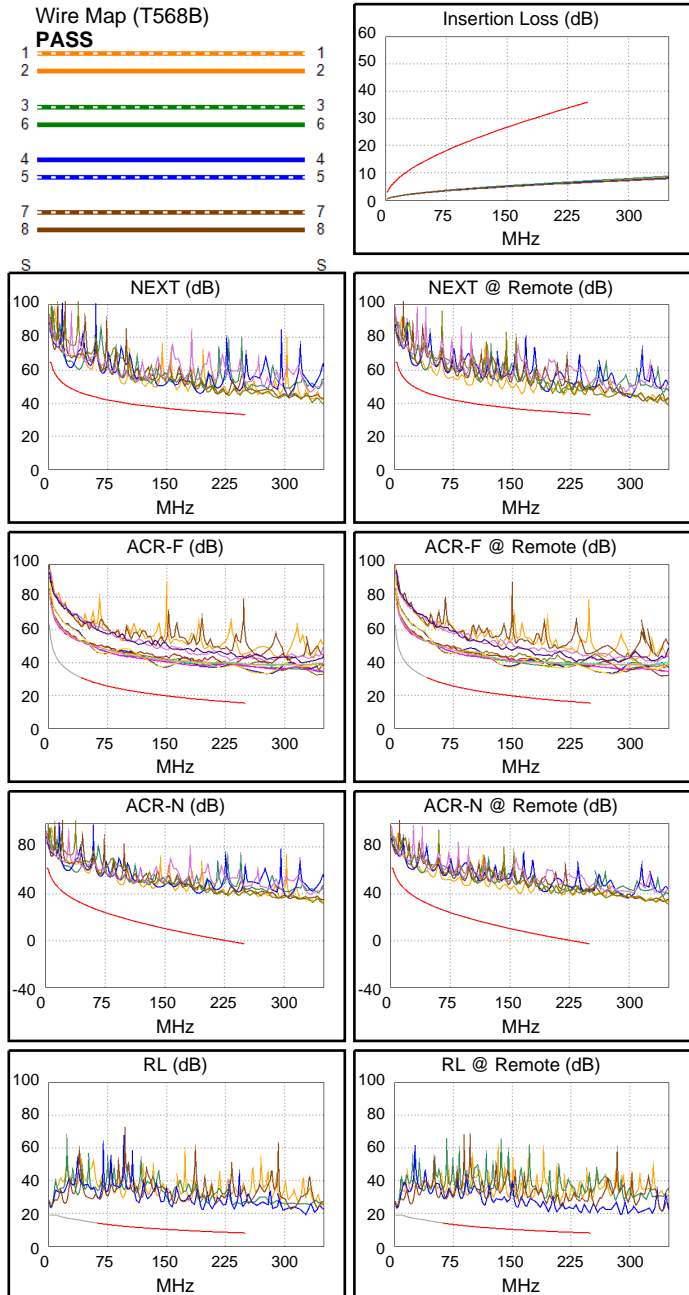
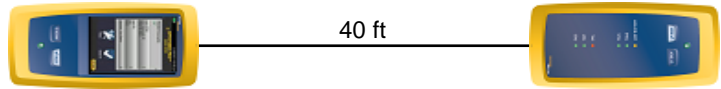
Software Version: V6.11 Build 2

Calibration Date: 01/25/2024

Adapter: DSX-8000R (DSX-CHA804)

S/N: 19372906

Length (ft), Limit 328	[Pair 1,2]	40
Prop. Delay (ns), Limit 555	[Pair 3,6]	62
Delay Skew (ns), Limit 50	[Pair 3,6]	3
Resistance (ohms)	[Pair 1,2]	6.07
Insertion Loss Margin (dB)	[Pair 3,6]	28.8
Frequency (MHz)	[Pair 3,6]	250.0
Limit (dB)	[Pair 3,6]	35.9



Worst Case Margin Worst Case Value

PASS	MAIN	SR	MAIN	SR
Worst Pair	1,2-7,8	1,2-3,6	3,6-7,8	1,2-3,6
NEXT (dB)	10.8	9.3	11.0	11.3
Freq. (MHz)	192.5	162.0	229.5	230.0
Limit (dB)	35.1	36.4	33.8	33.7
Worst Pair	3,6	3,6	3,6	3,6
PS NEXT (dB)	9.8	10.7	9.9	10.7
Freq. (MHz)	228.0	229.0	229.0	229.0
Limit (dB)	30.9	30.8	30.8	30.8

PASS	MAIN	SR	MAIN	SR
Worst Pair	1,2-7,8	7,8-1,2	7,8-1,2	7,8-1,2
ACR-F (dB)	17.4	17.2	20.5	20.6
Freq. (MHz)	148.0	148.0	250.0	250.0
Limit (dB)	19.9	19.9	15.3	15.3
Worst Pair	7,8	1,2	4,5	1,2
PS ACR-F (dB)	18.7	18.6	21.2	21.3
Freq. (MHz)	149.5	146.0	248.5	250.0
Limit (dB)	16.8	17.0	12.4	12.3

N/A	MAIN	SR	MAIN	SR
Worst Pair	3,6-4,5	3,6-4,5	1,2-3,6	1,2-3,6
ACR-N (dB)	18.4	18.2	38.7	38.8
Freq. (MHz)	6.8	3.0	230.5	230.5
Limit (dB)	54.2	61.5	-0.5	-0.5
Worst Pair	3,6	3,6	3,6	3,6
PS ACR-N (dB)	19.9	19.7	37.3	38.1
Freq. (MHz)	7.0	3.4	229.0	229.0
Limit (dB)	51.3	58.0	-3.3	-3.3

PASS	MAIN	SR	MAIN	SR
Worst Pair	4,5	4,5	4,5	4,5
RL (dB)	13.3	12.0	13.3	12.0
Freq. (MHz)	196.5	237.5	196.5	237.5
Limit (dB)	9.1	8.2	9.1	8.2

Compliant Network Standards:
 10BASE-T 100BASE-TX 100BASE-T4
 1000BASE-T 2.5GBASE-T 5GBASE-T
 ATM-25 ATM-51 ATM-155
 100VG-AnyLan TR-4 TR-16 Active
 TR-16 Passive



Cable ID: 007

Test Limit: TIA Cat 6 Channel

Limits Version: V7.9

Date / Time: 06/25/2024 08:47:50 AM

Operator: SPENCER WARD

Headroom 10.0 dB (NEXT 3,6-4,5)

Cable Type: Cat 6 U/UTP

NVP: 69.0%

Main: Versiv

S/N: 1943100

Software Version: V6.11 Build 2

Calibration Date: 01/25/2024

Adapter: DSX-8000 (DSX-CHA804)

S/N: 19374308

Test Summary: PASS

Remote: Versiv

S/N: 1943152

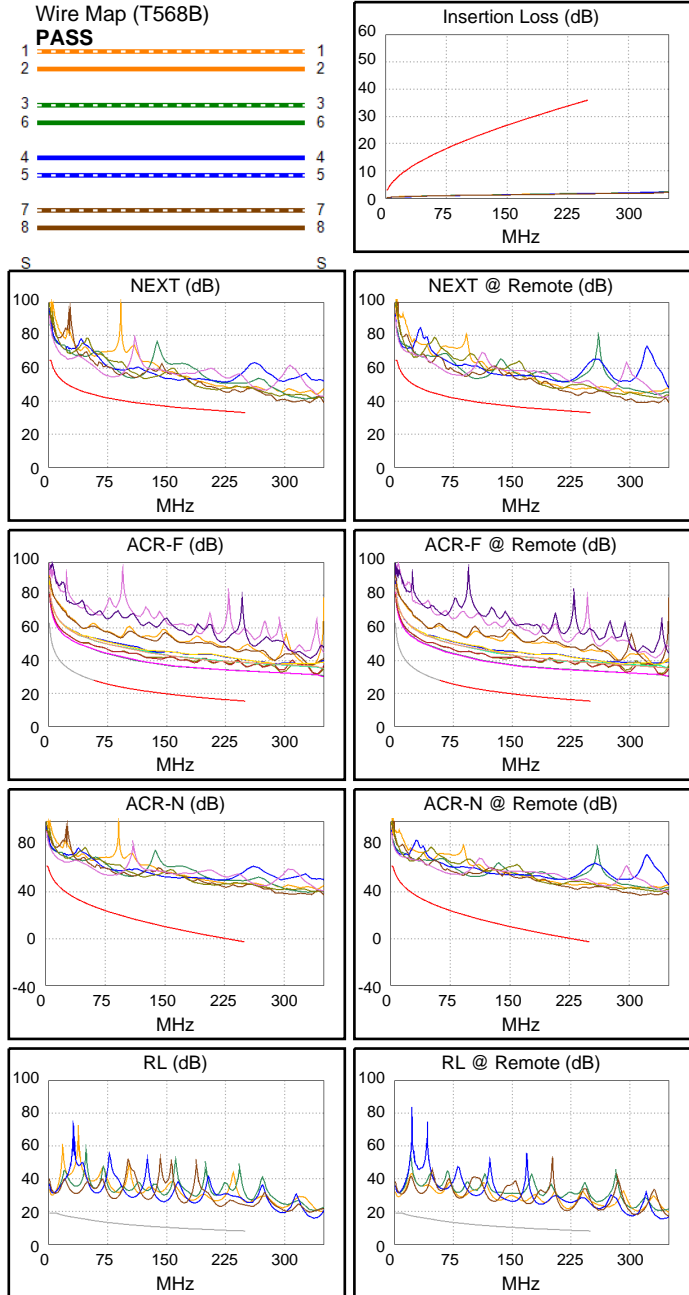
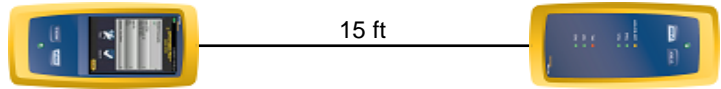
Software Version: V6.11 Build 2

Calibration Date: 01/25/2024

Adapter: DSX-8000R (DSX-CHA804)

S/N: 19372906

Length (ft), Limit 328	[Pair 1,2]	15
Prop. Delay (ns), Limit 555	[Pair 3,6]	23
Delay Skew (ns), Limit 50	[Pair 3,6]	1
Resistance (ohms)	[Pair 1,2]	3.14
Insertion Loss Margin (dB)	[Pair 3,6]	34.2
Frequency (MHz)	[Pair 3,6]	250.0
Limit (dB)	[Pair 3,6]	35.9



Worst Case Margin Worst Case Value

PASS	MAIN	SR	MAIN	SR
Worst Pair	3,6-4,5	3,6-4,5	3,6-4,5	3,6-4,5
NEXT (dB)	11.6	10.0	11.6	10.0
Freq. (MHz)	227.5	235.0	227.5	235.0
Limit (dB)	33.8	33.6	33.8	33.6
Worst Pair	3,6	3,6	3,6	3,6
PS NEXT (dB)	11.4	10.8	11.4	10.9
Freq. (MHz)	227.5	234.0	227.5	235.0
Limit (dB)	30.9	30.7	30.9	30.6

PASS	MAIN	SR	MAIN	SR
Worst Pair	1,2-4,5	4,5-1,2	1,2-4,5	4,5-1,2
ACR-F (dB)	17.3	17.3	18.3	18.3
Freq. (MHz)	155.0	164.0	250.0	250.0
Limit (dB)	19.5	19.0	15.3	15.3
Worst Pair	4,5	4,5	4,5	4,5
PS ACR-F (dB)	17.5	17.3	18.8	18.8
Freq. (MHz)	1.0	1.0	250.0	250.0
Limit (dB)	60.3	60.3	12.3	12.3

N/A	MAIN	SR	MAIN	SR
Worst Pair	4,5-7,8	4,5-7,8	3,6-4,5	3,6-4,5
ACR-N (dB)	21.2	19.0	44.1	43.2
Freq. (MHz)	4.5	3.5	227.5	235.0
Limit (dB)	58.0	60.2	-0.2	-1.1
Worst Pair	4,5	7,8	3,6	3,6
PS ACR-N (dB)	21.4	19.1	43.8	43.9
Freq. (MHz)	3.5	3.5	227.5	235.0
Limit (dB)	57.7	57.7	-3.1	-4.0

N/A	MAIN	SR	MAIN	SR
Worst Pair	1,2	1,2	7,8	7,8
RL (dB)	10.7	9.9	14.5	11.9
Freq. (MHz)	4.1	4.5	218.5	221.0
Limit (dB)	19.0	19.0	8.6	8.6

Compliant Network Standards:
 10BASE-T 100BASE-TX 100BASE-T4
 1000BASE-T 2.5GBASE-T 5GBASE-T
 ATM-25 ATM-51 ATM-155
 100VG-AnyLan TR-4 TR-16 Active
 TR-16 Passive



Cable ID: 008

Test Limit: TIA Cat 6 Channel

Limits Version: V7.9

Date / Time: 06/25/2024 08:48:24 AM

Operator: SPENCER WARD

Headroom 9.1 dB (NEXT 3,6-4,5)

Cable Type: Cat 6 U/UTP

NVP: 69.0%

Main: Versiv

S/N: 1943100

Software Version: V6.11 Build 2

Calibration Date: 01/25/2024

Adapter: DSX-8000 (DSX-CHA804)

S/N: 19374308

Test Summary: PASS

Remote: Versiv

S/N: 1943152

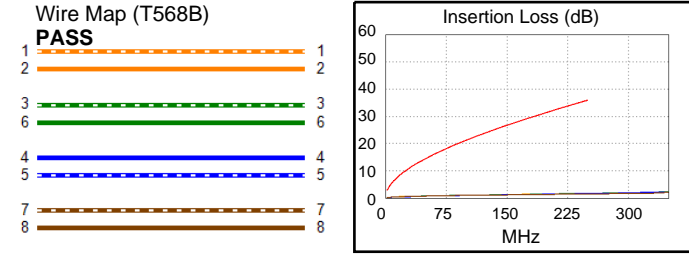
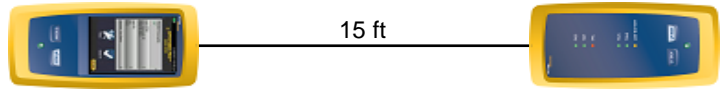
Software Version: V6.11 Build 2

Calibration Date: 01/25/2024

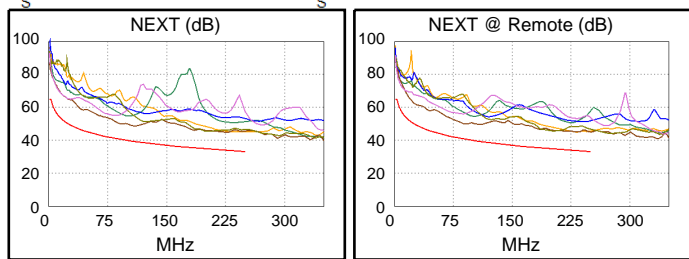
Adapter: DSX-8000R (DSX-CHA804)

S/N: 19372906

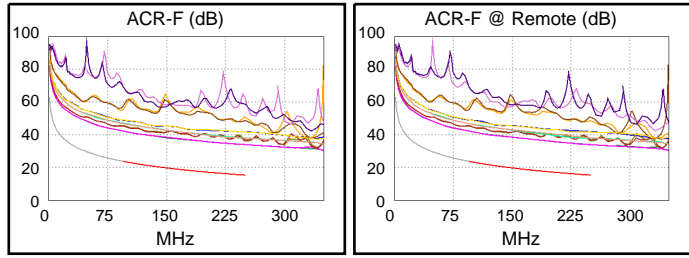
Length (ft), Limit 328	[Pair 1,2]	15
Prop. Delay (ns), Limit 555	[Pair 3,6]	23
Delay Skew (ns), Limit 50	[Pair 3,6]	1
Resistance (ohms)	[Pair 1,2]	3.18
Insertion Loss Margin (dB)	[Pair 3,6]	34.2
Frequency (MHz)	[Pair 3,6]	250.0
Limit (dB)	[Pair 3,6]	35.9



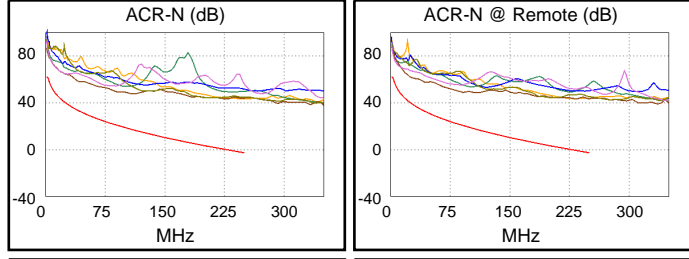
	Worst Case Margin		Worst Case Value	
PASS	MAIN	SR	MAIN	SR
Worst Pair	3,6-4,5	3,6-4,5	3,6-4,5	3,6-4,5
NEXT (dB)	9.4	9.1	11.0	11.1
Freq. (MHz)	109.5	89.3	228.5	230.0
Limit (dB)	39.3	40.8	33.8	33.7
Worst Pair	3,6	3,6	3,6	3,6
PS NEXT (dB)	9.6	9.8	9.7	10.7
Freq. (MHz)	213.5	216.0	227.0	250.0
Limit (dB)	31.4	31.3	30.9	30.2



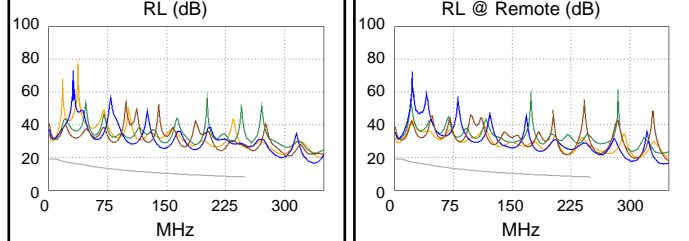
PASS	MAIN	SR	MAIN	SR
Worst Pair	1,2-4,5	4,5-1,2	1,2-4,5	4,5-1,2
ACR-F (dB)	18.1	18.0	18.5	18.5
Freq. (MHz)	111.0	111.0	250.0	250.0
Limit (dB)	22.4	22.4	15.3	15.3
Worst Pair	4,5	4,5	4,5	4,5
PS ACR-F (dB)	17.6	17.3	18.8	18.7
Freq. (MHz)	1.3	1.0	250.0	250.0
Limit (dB)	58.3	60.3	12.3	12.3



N/A	MAIN	SR	MAIN	SR
Worst Pair	3,6-4,5	4,5-7,8	1,2-3,6	1,2-3,6
ACR-N (dB)	19.9	18.9	46.0	44.2
Freq. (MHz)	3.4	4.5	250.0	233.5
Limit (dB)	60.5	58.0	-2.8	-0.9
Worst Pair	4,5	4,5	3,6	3,6
PS ACR-N (dB)	18.9	18.6	44.5	45.0
Freq. (MHz)	3.4	3.4	247.5	250.0
Limit (dB)	58.0	58.0	-5.5	-5.8



N/A	MAIN	SR	MAIN	SR
Worst Pair	1,2	1,2	7,8	1,2
RL (dB)	10.9	9.9	15.5	13.1
Freq. (MHz)	4.8	4.6	219.5	222.0
Limit (dB)	19.0	19.0	8.6	8.5



Compliant Network Standards:
 10BASE-T 100BASE-TX 100BASE-T4
 1000BASE-T 2.5GBASE-T 5GBASE-T
 ATM-25 ATM-51 ATM-155
 100VG-AnyLan TR-4 TR-16 Active
 TR-16 Passive



Cable ID: 009

Test Limit: TIA Cat 6 Channel

Limits Version: V7.9

Date / Time: 06/25/2024 08:48:41 AM

Operator: SPENCER WARD

Headroom 10.0 dB (NEXT 3,6-4,5)

Cable Type: Cat 6 U/UTP

NVP: 69.0%

Main: Versiv

S/N: 1943100

Software Version: V6.11 Build 2

Calibration Date: 01/25/2024

Adapter: DSX-8000 (DSX-CHA804)

S/N: 19374308

Test Summary: PASS

Remote: Versiv

S/N: 1943152

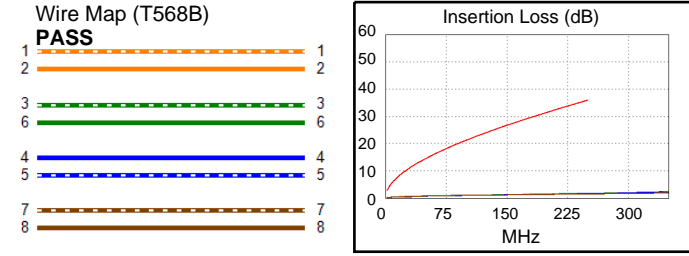
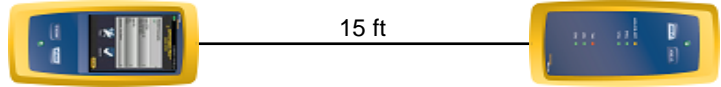
Software Version: V6.11 Build 2

Calibration Date: 01/25/2024

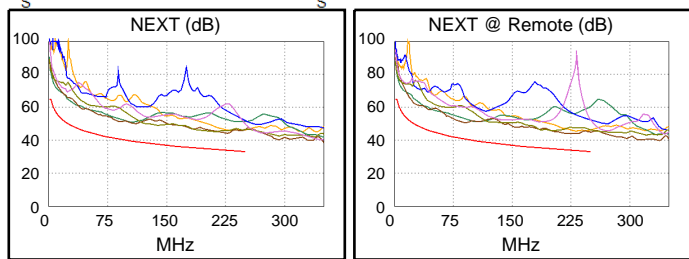
Adapter: DSX-8000R (DSX-CHA804)

S/N: 19372906

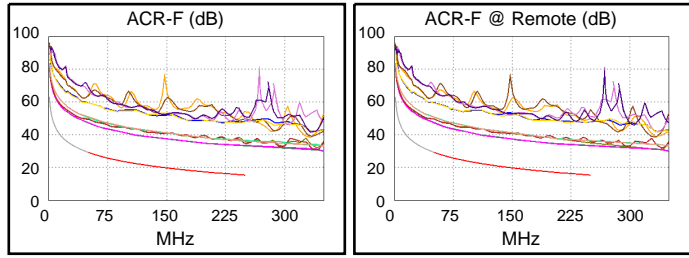
Length (ft), Limit 328	[Pair 1,2]	15
Prop. Delay (ns), Limit 555	[Pair 3,6]	23
Delay Skew (ns), Limit 50	[Pair 3,6]	1
Resistance (ohms)	[Pair 1,2]	3.19
Insertion Loss Margin (dB)	[Pair 3,6]	34.2
Frequency (MHz)	[Pair 3,6]	250.0
Limit (dB)	[Pair 3,6]	35.9



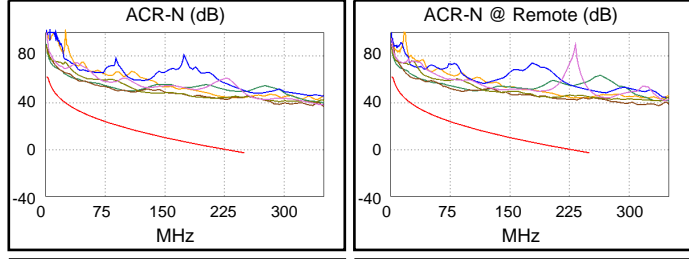
	Worst Case Margin		Worst Case Value	
PASS	MAIN	SR	MAIN	SR
Worst Pair	3,6-4,5	3,6-4,5	3,6-4,5	3,6-4,5
NEXT (dB)	10.4	10.0	10.5	10.1
Freq. (MHz)	226.5	220.5	227.5	229.5
Limit (dB)	33.9	34.1	33.8	33.8
Worst Pair	3,6	3,6	3,6	3,6
PS NEXT (dB)	9.7	9.8	9.7	9.9
Freq. (MHz)	227.5	216.5	227.5	230.5
Limit (dB)	30.9	31.2	30.9	30.8



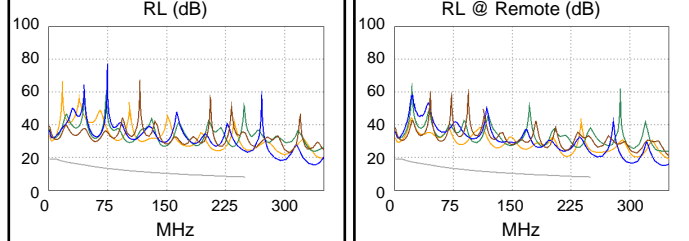
PASS	MAIN	SR	MAIN	SR
Worst Pair	1,2-4,5	4,5-1,2	1,2-4,5	4,5-1,2
ACR-F (dB)	17.2	17.2	17.7	17.7
Freq. (MHz)	158.5	166.0	250.0	250.0
Limit (dB)	19.3	18.9	15.3	15.3
Worst Pair	4,5	4,5	4,5	4,5
PS ACR-F (dB)	16.6	16.2	17.7	17.5
Freq. (MHz)	1.0	1.0	250.0	250.0
Limit (dB)	60.3	60.3	12.3	12.3



N/A	MAIN	SR	MAIN	SR
Worst Pair	1,2-4,5	1,2-4,5	3,6-4,5	3,6-4,5
ACR-N (dB)	18.7	18.2	43.1	42.8
Freq. (MHz)	3.0	3.6	227.5	229.5
Limit (dB)	61.5	59.9	-0.2	-0.4
Worst Pair	4,5	4,5	3,6	3,6
PS ACR-N (dB)	19.5	19.1	42.1	42.6
Freq. (MHz)	4.6	3.6	227.5	230.5
Limit (dB)	55.2	57.4	-3.1	-3.5



N/A	MAIN	SR	MAIN	SR
Worst Pair	1,2	1,2	4,5	1,2
RL (dB)	11.1	10.2	15.6	11.9
Freq. (MHz)	4.1	5.1	250.0	220.0
Limit (dB)	19.0	19.0	8.0	8.6



Compliant Network Standards:
 10BASE-T 100BASE-TX 100BASE-T4
 1000BASE-T 2.5GBASE-T 5GBASE-T
 ATM-25 ATM-51 ATM-155
 100VG-AnyLan TR-4 TR-16 Active
 TR-16 Passive



Cable ID: 010

Test Limit: TIA Cat 6 Channel

Limits Version: V7.9

Date / Time: 06/25/2024 08:49:07 AM

Operator: SPENCER WARD

Headroom 7.8 dB (NEXT 3,6-4,5)

Cable Type: Cat 6 U/UTP

NVP: 69.0%

Main: Versiv

S/N: 1943100

Software Version: V6.11 Build 2

Calibration Date: 01/25/2024

Adapter: DSX-8000 (DSX-CHA804)

S/N: 19374308

Test Summary: PASS

Remote: Versiv

S/N: 1943152

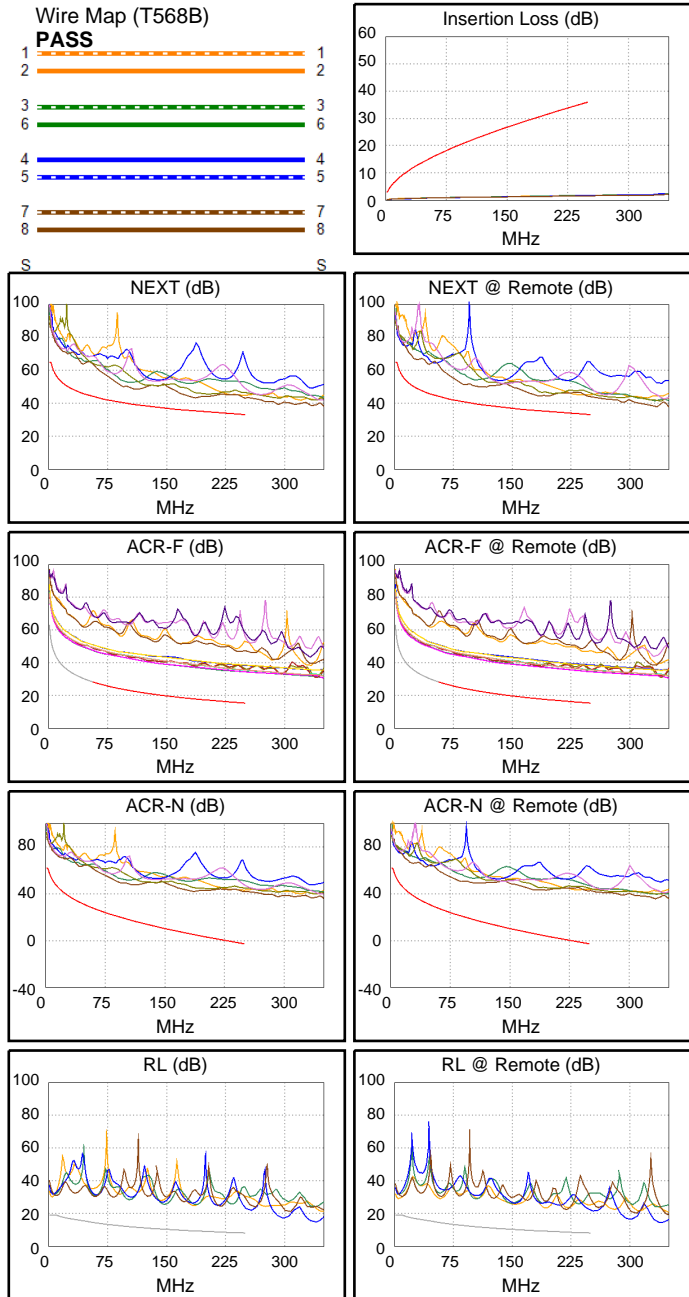
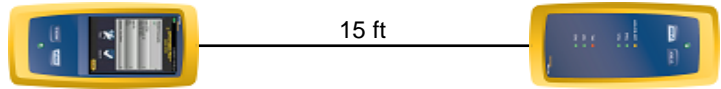
Software Version: V6.11 Build 2

Calibration Date: 01/25/2024

Adapter: DSX-8000R (DSX-CHA804)

S/N: 19372906

Length (ft), Limit 328	[Pair 1,2]	15
Prop. Delay (ns), Limit 555	[Pair 3,6]	23
Delay Skew (ns), Limit 50	[Pair 3,6]	1
Resistance (ohms)	[Pair 1,2]	3.29
Insertion Loss Margin (dB)	[Pair 3,6]	34.2
Frequency (MHz)	[Pair 3,6]	250.0
Limit (dB)	[Pair 3,6]	35.9



Worst Case Margin Worst Case Value

PASS	MAIN	SR	MAIN	SR
Worst Pair	3,6-4,5	3,6-4,5	3,6-4,5	3,6-4,5
NEXT (dB)	7.8	8.9	10.1	11.0
Freq. (MHz)	185.0	182.5	250.0	250.0
Limit (dB)	35.4	35.5	33.1	33.1
Worst Pair	3,6	3,6	3,6	3,6
PS NEXT (dB)	8.8	9.7	9.7	10.1
Freq. (MHz)	185.5	189.0	250.0	250.0
Limit (dB)	32.4	32.3	30.2	30.2

PASS	MAIN	SR	MAIN	SR
Worst Pair	1,2-4,5	4,5-1,2	1,2-4,5	4,5-1,2
ACR-F (dB)	18.7	18.6	19.2	19.2
Freq. (MHz)	18.6	18.6	250.0	250.0
Limit (dB)	37.9	37.9	15.3	15.3
Worst Pair	4,5	4,5	4,5	4,5
PS ACR-F (dB)	17.1	16.9	18.3	18.1
Freq. (MHz)	1.4	1.0	250.0	250.0
Limit (dB)	57.5	60.3	12.3	12.3

N/A	MAIN	SR	MAIN	SR
Worst Pair	3,6-4,5	1,2-7,8	3,6-4,5	3,6-4,5
ACR-N (dB)	23.3	21.6	44.4	45.3
Freq. (MHz)	2.3	3.6	250.0	250.0
Limit (dB)	61.9	59.9	-2.8	-2.8
Worst Pair	4,5	7,8	3,6	3,6
PS ACR-N (dB)	22.8	20.9	44.0	44.4
Freq. (MHz)	3.4	3.4	250.0	250.0
Limit (dB)	58.0	58.0	-5.8	-5.8

N/A	MAIN	SR	MAIN	SR
Worst Pair	1,2	1,2	4,5	4,5
RL (dB)	11.1	10.0	15.5	14.1
Freq. (MHz)	4.6	4.1	250.0	250.0
Limit (dB)	19.0	19.0	8.0	8.0

Compliant Network Standards:
 10BASE-T 100BASE-TX 100BASE-T4
 1000BASE-T 2.5GBASE-T 5GBASE-T
 ATM-25 ATM-51 ATM-155
 100VG-AnyLan TR-4 TR-16 Active
 TR-16 Passive



Cable ID: 011

Test Limit: TIA Cat 6 Channel

Limits Version: V7.9

Date / Time: 06/25/2024 08:49:23 AM

Operator: SPENCER WARD

Headroom 9.7 dB (NEXT 1,2-4,5)

Cable Type: Cat 6 U/UTP

NVP: 69.0%

Main: Versiv

S/N: 1943100

Software Version: V6.11 Build 2

Calibration Date: 01/25/2024

Adapter: DSX-8000 (DSX-CHA804)

S/N: 19374308

Test Summary: PASS

Remote: Versiv

S/N: 1943152

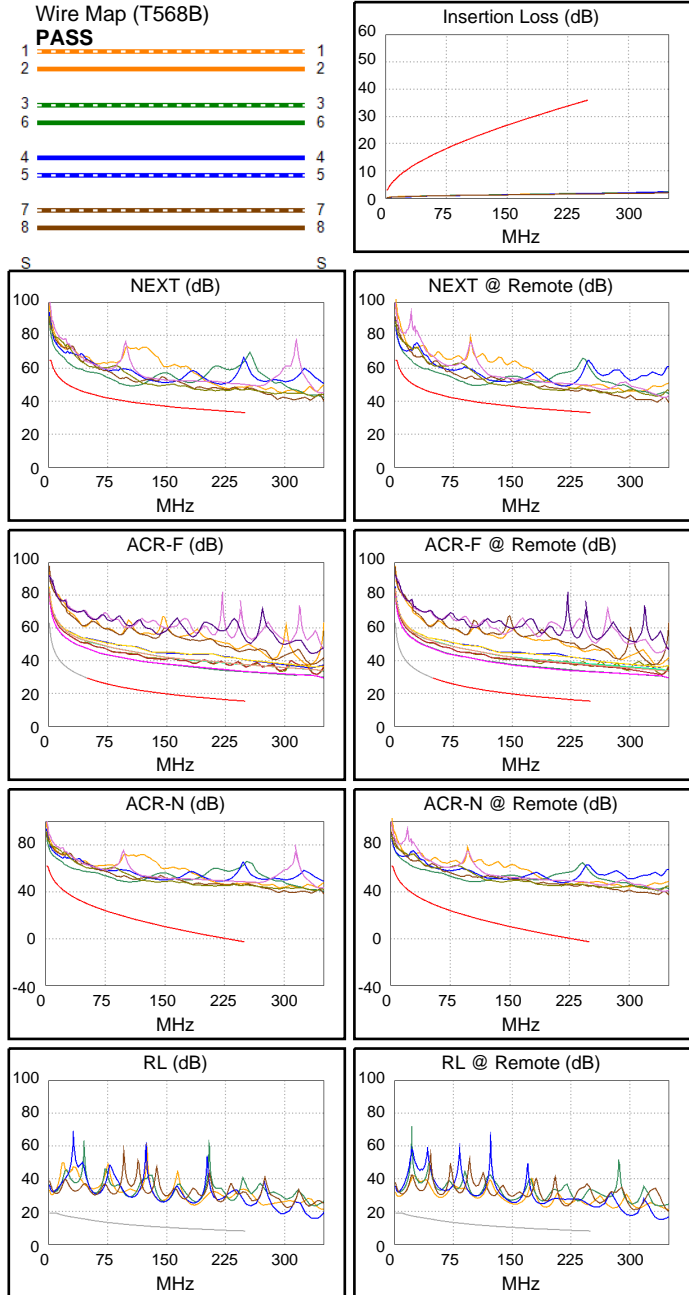
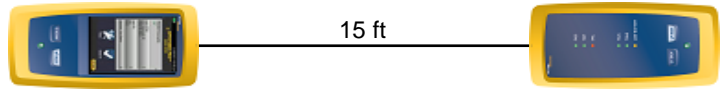
Software Version: V6.11 Build 2

Calibration Date: 01/25/2024

Adapter: DSX-8000R (DSX-CHA804)

S/N: 19372906

Length (ft), Limit 328	[Pair 1,2]	15
Prop. Delay (ns), Limit 555	[Pair 3,6]	23
Delay Skew (ns), Limit 50	[Pair 3,6]	1
Resistance (ohms)	[Pair 1,2]	3.34
Insertion Loss Margin (dB)	[Pair 3,6]	34.2
Frequency (MHz)	[Pair 3,6]	250.0
Limit (dB)	[Pair 3,6]	35.9



Worst Case Margin Worst Case Value

PASS	MAIN	SR	MAIN	SR
Worst Pair	1,2-4,5	1,2-4,5	3,6-7,8	3,6-4,5
NEXT (dB)	9.7	9.8	12.1	12.5
Freq. (MHz)	102.0	102.0	214.5	234.5
Limit (dB)	39.8	39.8	34.3	33.6
Worst Pair	4,5	4,5	3,6	3,6
PS NEXT (dB)	10.8	11.1	11.6	11.6
Freq. (MHz)	109.5	103.0	230.5	230.0
Limit (dB)	36.4	36.9	30.8	30.8

PASS	MAIN	SR	MAIN	SR
Worst Pair	1,2-4,5	4,5-1,2	1,2-4,5	4,5-1,2
ACR-F (dB)	17.3	17.2	17.9	17.9
Freq. (MHz)	18.6	18.6	250.0	250.0
Limit (dB)	37.9	37.9	15.3	15.3
Worst Pair	4,5	4,5	4,5	4,5
PS ACR-F (dB)	16.8	16.6	18.4	18.4
Freq. (MHz)	1.4	1.1	250.0	250.0
Limit (dB)	57.5	59.2	12.3	12.3

N/A	MAIN	SR	MAIN	SR
Worst Pair	1,2-4,5	1,2-4,5	3,6-7,8	3,6-4,5
ACR-N (dB)	18.2	18.1	43.6	47.4
Freq. (MHz)	3.3	3.4	214.5	250.0
Limit (dB)	60.9	60.5	1.4	-2.8
Worst Pair	1,2	1,2	3,6	3,6
PS ACR-N (dB)	19.3	17.7	44.3	44.2
Freq. (MHz)	5.6	3.4	230.5	230.0
Limit (dB)	53.4	58.0	-3.5	-3.4

N/A	MAIN	SR	MAIN	SR
Worst Pair	1,2	1,2	1,2	1,2
RL (dB)	11.1	9.9	14.5	13.4
Freq. (MHz)	4.8	4.1	185.0	193.0
Limit (dB)	19.0	19.0	9.3	9.1

Compliant Network Standards:
 10BASE-T 100BASE-TX 100BASE-T4
 1000BASE-T 2.5GBASE-T 5GBASE-T
 ATM-25 ATM-51 ATM-155
 100VG-AnyLan TR-4 TR-16 Active
 TR-16 Passive



Cable ID: 012

Test Limit: TIA Cat 6 Channel

Limits Version: V7.9

Date / Time: 06/25/2024 08:49:41 AM

Operator: SPENCER WARD

Headroom 9.7 dB (NEXT 3,6-4,5)

Cable Type: Cat 6 U/UTP

NVP: 69.0%

Main: Versiv

S/N: 1943100

Software Version: V6.11 Build 2

Calibration Date: 01/25/2024

Adapter: DSX-8000 (DSX-CHA804)

S/N: 19374308

Test Summary: PASS

Remote: Versiv

S/N: 1943152

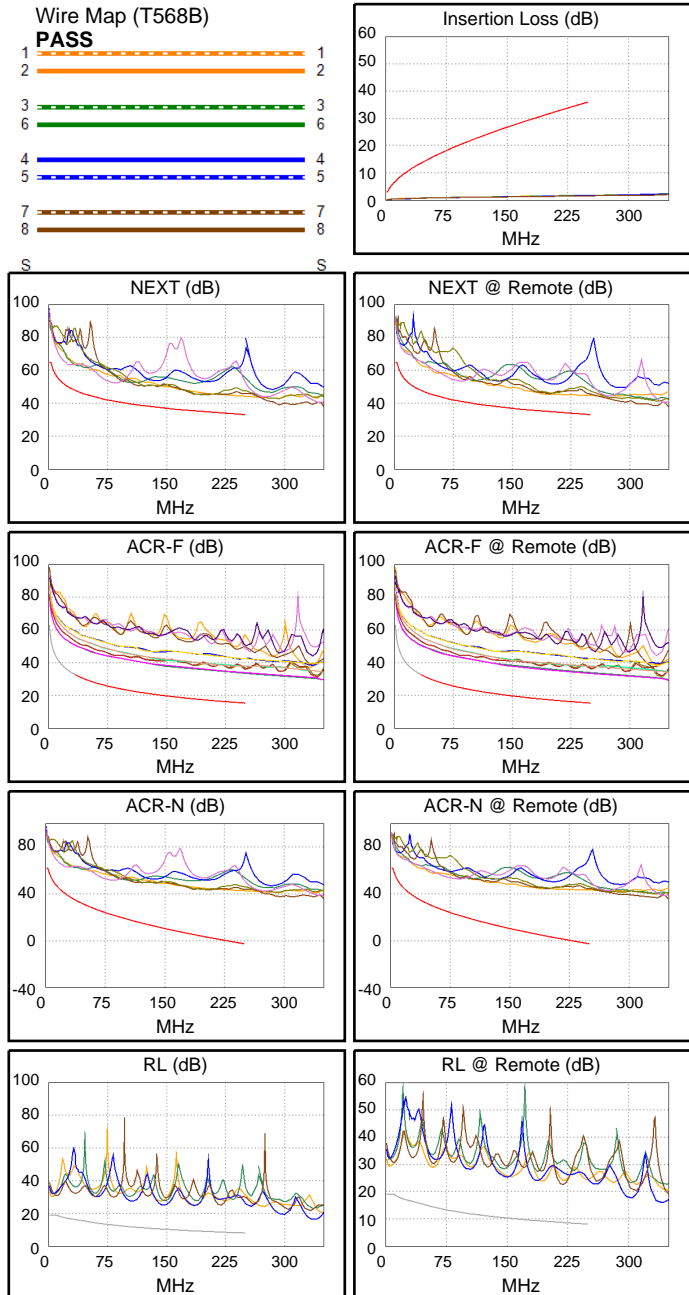
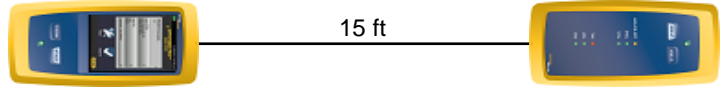
Software Version: V6.11 Build 2

Calibration Date: 01/25/2024

Adapter: DSX-8000R (DSX-CHA804)

S/N: 19372906

Length (ft), Limit 328	[Pair 1,2]	15
Prop. Delay (ns), Limit 555	[Pair 3,6]	23
Delay Skew (ns), Limit 50	[Pair 3,6]	1
Resistance (ohms)	[Pair 1,2]	3.31
Insertion Loss Margin (dB)	[Pair 3,6]	34.2
Frequency (MHz)	[Pair 3,6]	250.0
Limit (dB)	[Pair 3,6]	35.9



Worst Case Margin Worst Case Value

PASS	MAIN	SR	MAIN	SR
Worst Pair	3,6-4,5	1,2-3,6	1,2-3,6	1,2-3,6
NEXT (dB)	9.7	10.4	11.3	11.2
Freq. (MHz)	185.0	190.0	249.5	248.0
Limit (dB)	35.4	35.2	33.1	33.2
Worst Pair	3,6	3,6	3,6	3,6
PS NEXT (dB)	8.6	9.2	8.8	10.7
Freq. (MHz)	200.0	200.0	204.5	250.0
Limit (dB)	31.9	31.9	31.7	30.2

PASS	MAIN	SR	MAIN	SR
Worst Pair	1,2-4,5	4,5-1,2	1,2-4,5	4,5-1,2
ACR-F (dB)	17.4	17.3	18.5	18.5
Freq. (MHz)	17.4	17.4	250.0	250.0
Limit (dB)	38.5	38.5	15.3	15.3
Worst Pair	4,5	4,5	4,5	4,5
PS ACR-F (dB)	17.6	17.3	18.7	18.6
Freq. (MHz)	1.4	1.4	250.0	250.0
Limit (dB)	57.5	57.5	12.3	12.3

N/A	MAIN	SR	MAIN	SR
Worst Pair	4,5-7,8	1,2-3,6	1,2-3,6	1,2-3,6
ACR-N (dB)	21.9	19.3	45.5	45.3
Freq. (MHz)	15.6	3.3	249.5	248.0
Limit (dB)	45.5	60.9	-2.8	-2.6
Worst Pair	1,2	1,2	3,6	3,6
PS ACR-N (dB)	21.7	18.6	40.3	45.0
Freq. (MHz)	5.3	3.3	211.5	250.0
Limit (dB)	54.0	58.4	-1.2	-5.8

N/A	MAIN	SR	MAIN	SR
Worst Pair	1,2	1,2	1,2	7,8
RL (dB)	11.1	10.1	15.5	13.9
Freq. (MHz)	4.1	4.1	185.5	219.0
Limit (dB)	19.0	19.0	9.3	8.6

Compliant Network Standards:
 10BASE-T 100BASE-TX 100BASE-T4
 1000BASE-T 2.5GBASE-T 5GBASE-T
 ATM-25 ATM-51 ATM-155
 100VG-AnyLan TR-4 TR-16 Active
 TR-16 Passive



Cable ID: 013

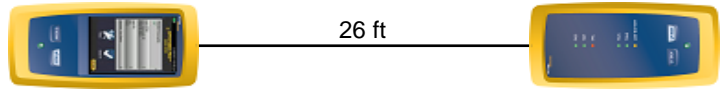
Test Limit: TIA Patch Cord Cat6 10.0m
Limits Version: V7.9
Date / Time: 06/25/2024 08:57:03 AM
Operator: SPENCER WARD
Headroom 5.3 dB (NEXT 1,2-3,6)
Cable Type: Cat 6A U/UTP
NVP: 68.2%

Main: Versiv
S/N: 1943100
Software Version: V6.11 Build 2
Calibration Date: 01/25/2024
Adapter: DSX-8000 (DSX-PC6)
S/N: 4757054

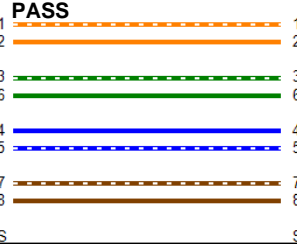
Test Summary: PASS

Remote: Versiv
S/N: 1943152
Software Version: V6.11 Build 2
Calibration Date: 01/25/2024
Adapter: DSX-8000R (DSX-PC6)
S/N: 47571093

Length (ft)	[Pair 1,2]	26
Prop. Delay (ns)	[Pair 3,6]	41
Delay Skew (ns)	[Pair 3,6]	3
Resistance (ohms)	[Pair 3,6]	3.49



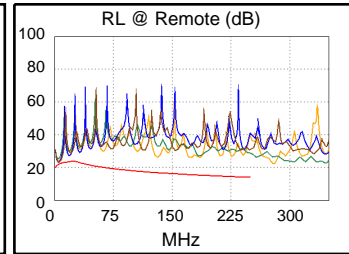
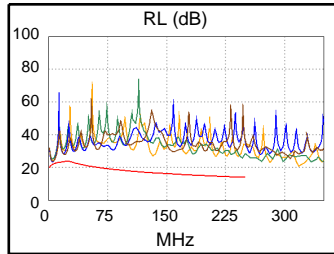
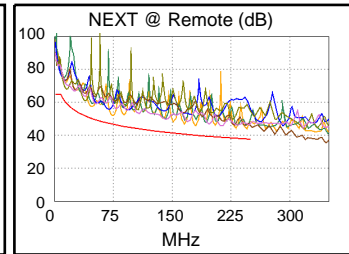
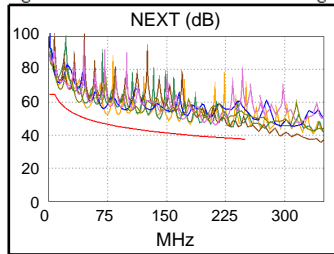
Wire Map (T568B)



Worst Case Margin Worst Case Value

PASS	MAIN	SR	MAIN	SR
Worst Pair	1,2-3,6	1,2-3,6	1,2-4,5	1,2-3,6
NEXT (dB)	6.0	5.3	6.5	6.0
Freq. (MHz)	73.8	73.8	233.0	245.0
Limit (dB)	46.8	46.8	38.1	37.8

PASS	MAIN	SR	MAIN	SR
Worst Pair	4,5	4,5	4,5	4,5
RL (dB)	1.4	1.2	1.4	1.2
Freq. (MHz)	5.6	5.8	5.5	5.4
Limit (dB)	22.1	22.1	22.0	22.0





Cable ID: 014

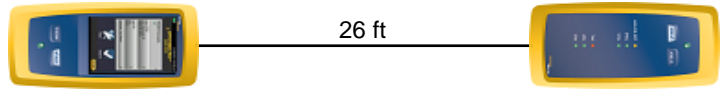
Test Limit: TIA Patch Cord Cat6 10.0m
Limits Version: V7.9
Date / Time: 06/25/2024 08:57:35 AM
Operator: SPENCER WARD
Headroom 4.3 dB (NEXT 1,2-3,6)
Cable Type: Cat 6A U/UTP
NVP: 68.2%

Main: Versiv
S/N: 1943100
Software Version: V6.11 Build 2
Calibration Date: 01/25/2024
Adapter: DSX-8000 (DSX-PC6)
S/N: 4757054

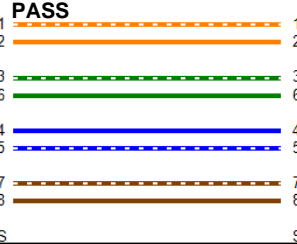
Test Summary: PASS

Remote: Versiv
S/N: 1943152
Software Version: V6.11 Build 2
Calibration Date: 01/25/2024
Adapter: DSX-8000R (DSX-PC6)
S/N: 47571093

Length (ft)	[Pair 1,2]	26
Prop. Delay (ns)	[Pair 3,6]	41
Delay Skew (ns)	[Pair 3,6]	3
Resistance (ohms)	[Pair 3,6]	3.47



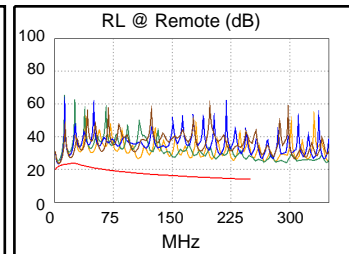
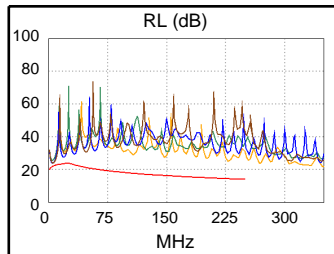
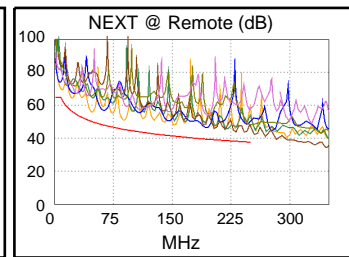
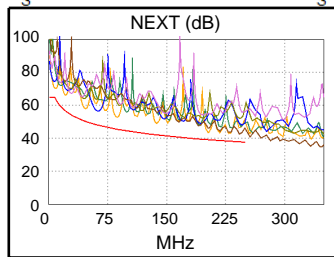
Wire Map (T568B)



Worst Case Margin Worst Case Value

PASS	MAIN	SR	MAIN	SR
Worst Pair	1,2-3,6	1,2-3,6	3,6-4,5	3,6-4,5
NEXT (dB)	4.3	5.3	4.7	5.7
Freq. (MHz)	203.5	8.1	244.0	243.5
Limit (dB)	39.1	64.7	37.8	37.8

PASS	MAIN	SR	MAIN	SR
Worst Pair	4,5	4,5	4,5	4,5
RL (dB)	1.7	1.4	1.7	1.4
Freq. (MHz)	5.9	5.6	5.5	5.4
Limit (dB)	22.1	22.1	22.0	22.0





Cable ID: 015

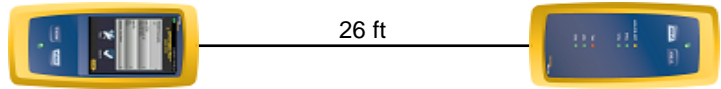
Test Limit: TIA Patch Cord Cat6 10.0m
Limits Version: V7.9
Date / Time: 06/25/2024 08:58:00 AM
Operator: SPENCER WARD
Headroom 4.4 dB (NEXT 1,2-3,6)
Cable Type: Cat 6A U/UTP
NVP: 68.2%

Main: Versiv
S/N: 1943100
Software Version: V6.11 Build 2
Calibration Date: 01/25/2024
Adapter: DSX-8000 (DSX-PC6)
S/N: 4757054

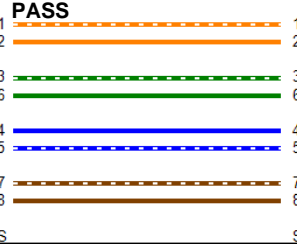
Test Summary: PASS

Remote: Versiv
S/N: 1943152
Software Version: V6.11 Build 2
Calibration Date: 01/25/2024
Adapter: DSX-8000R (DSX-PC6)
S/N: 47571093

Length (ft)	[Pair 1,2]	26
Prop. Delay (ns)	[Pair 3,6]	41
Delay Skew (ns)	[Pair 3,6]	3
Resistance (ohms)	[Pair 3,6]	3.46



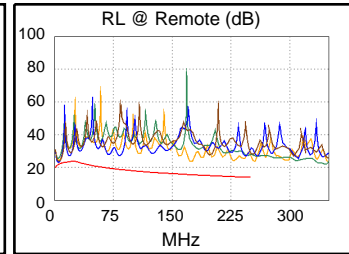
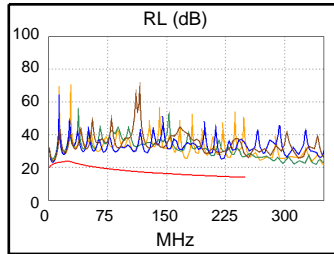
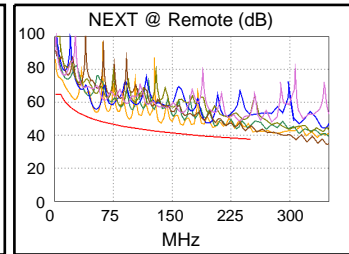
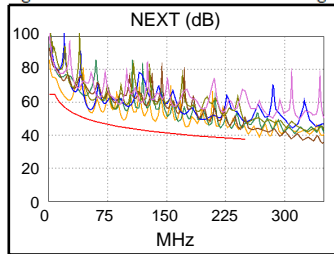
Wire Map (T568B)



Worst Case Margin Worst Case Value

PASS	MAIN	SR	MAIN	SR
Worst Pair	1,2-3,6	1,2-3,6	3,6-4,5	3,6-4,5
NEXT (dB)	4.4	4.6	5.8	5.1
Freq. (MHz)	53.8	53.8	244.0	244.0
Limit (dB)	49.3	49.3	37.8	37.8

PASS	MAIN	SR	MAIN	SR
Worst Pair	4,5	4,5	4,5	4,5
RL (dB)	1.2	1.0	1.2	1.1
Freq. (MHz)	6.1	5.6	5.1	4.9
Limit (dB)	22.2	22.1	21.9	21.9





Cable ID: 016

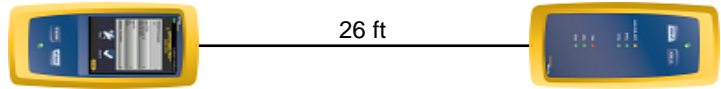
Test Limit: TIA Patch Cord Cat6 10.0m
Limits Version: V7.9
Date / Time: 06/25/2024 08:58:27 AM
Operator: SPENCER WARD
Headroom 2.1 dB (NEXT 3,6-4,5)
Cable Type: Cat 6A U/UTP
NVP: 68.2%

Main: Versiv
S/N: 1943100
Software Version: V6.11 Build 2
Calibration Date: 01/25/2024
Adapter: DSX-8000 (DSX-PC6)
S/N: 4757054

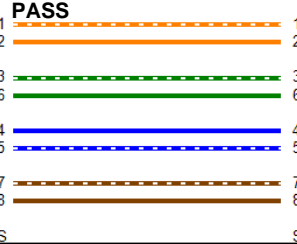
Test Summary: PASS

Remote: Versiv
S/N: 1943152
Software Version: V6.11 Build 2
Calibration Date: 01/25/2024
Adapter: DSX-8000R (DSX-PC6)
S/N: 47571093

Length (ft)	[Pair 1,2]	26
Prop. Delay (ns)	[Pair 3,6]	41
Delay Skew (ns)	[Pair 3,6]	3
Resistance (ohms)	[Pair 3,6]	3.48



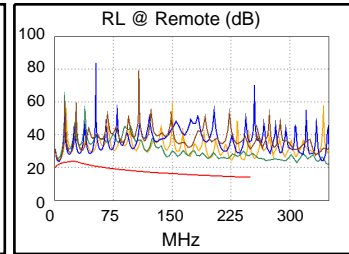
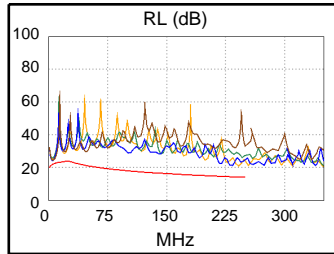
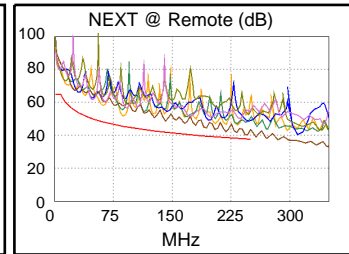
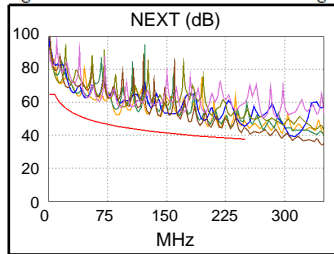
Wire Map (T568B)



Worst Case Margin Worst Case Value

PASS	MAIN	SR	MAIN	SR
Worst Pair	3,6-4,5	3,6-4,5	3,6-4,5	3,6-4,5
NEXT (dB)	3.7	2.1	3.7	2.1
Freq. (MHz)	244.5	244.5	244.5	244.5
Limit (dB)	37.8	37.8	37.8	37.8

PASS	MAIN	SR	MAIN	SR
Worst Pair	4,5	4,5	4,5	4,5
RL (dB)	2.3	1.7	6.5	1.7
Freq. (MHz)	5.9	5.9	232.5	5.1
Limit (dB)	22.1	22.1	14.3	21.9





Cable ID: 017

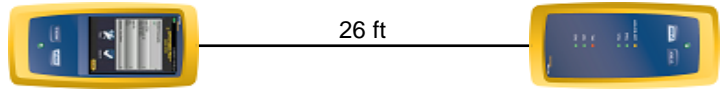
Test Limit: TIA Patch Cord Cat6 10.0m
Limits Version: V7.9
Date / Time: 06/25/2024 08:59:42 AM
Operator: SPENCER WARD
Headroom 4.6 dB (NEXT 3,6-4,5)
Cable Type: Cat 6A U/UTP
NVP: 68.2%

Main: Versiv
S/N: 1943100
Software Version: V6.11 Build 2
Calibration Date: 01/25/2024
Adapter: DSX-8000 (DSX-PC6)
S/N: 4757054

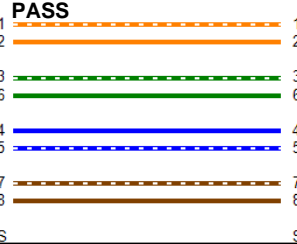
Test Summary: PASS

Remote: Versiv
S/N: 1943152
Software Version: V6.11 Build 2
Calibration Date: 01/25/2024
Adapter: DSX-8000R (DSX-PC6)
S/N: 47571093

Length (ft)	[Pair 1,2]	26
Prop. Delay (ns)	[Pair 3,6]	41
Delay Skew (ns)	[Pair 3,6]	3
Resistance (ohms)	[Pair 3,6]	3.50



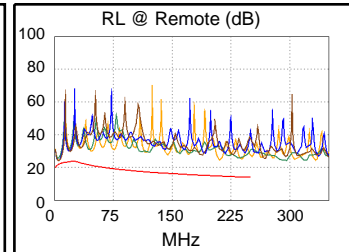
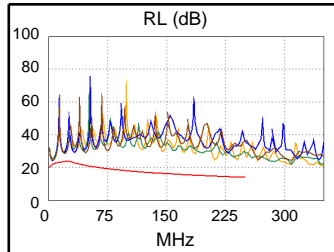
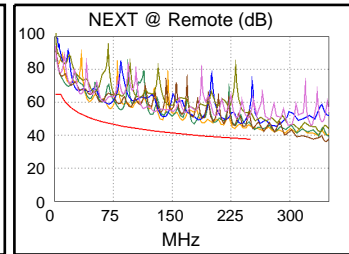
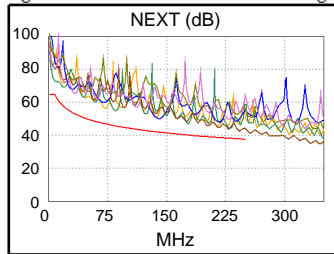
Wire Map (T568B)



Worst Case Margin Worst Case Value

PASS	MAIN	SR	MAIN	SR
Worst Pair	3,6-4,5	1,2-3,6	3,6-4,5	1,2-3,6
NEXT (dB)	4.6	5.7	4.7	6.1
Freq. (MHz)	242.5	229.5	243.0	242.0
Limit (dB)	37.9	38.3	37.8	37.9

PASS	MAIN	SR	MAIN	SR
Worst Pair	4,5	4,5	4,5	4,5
RL (dB)	2.1	2.1	2.1	2.2
Freq. (MHz)	6.1	5.6	5.5	5.0
Limit (dB)	22.2	22.1	22.0	21.9





Cable ID: 018

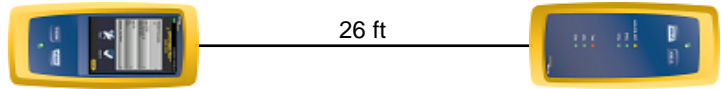
Test Limit: TIA Patch Cord Cat6 10.0m
Limits Version: V7.9
Date / Time: 06/25/2024 09:00:04 AM
Operator: SPENCER WARD
Headroom 3.5 dB (NEXT 3,6-4,5)
Cable Type: Cat 6A U/UTP
NVP: 68.2%

Main: Versiv
S/N: 1943100
Software Version: V6.11 Build 2
Calibration Date: 01/25/2024
Adapter: DSX-8000 (DSX-PC6)
S/N: 4757054

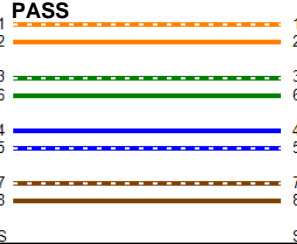
Test Summary: PASS

Remote: Versiv
S/N: 1943152
Software Version: V6.11 Build 2
Calibration Date: 01/25/2024
Adapter: DSX-8000R (DSX-PC6)
S/N: 47571093

Length (ft)	[Pair 1,2]	26
Prop. Delay (ns)	[Pair 3,6]	41
Delay Skew (ns)	[Pair 3,6]	3
Resistance (ohms)	[Pair 3,6]	3.49



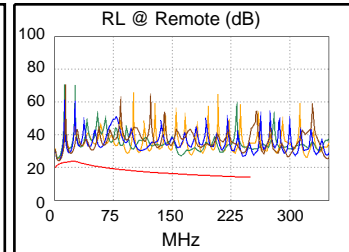
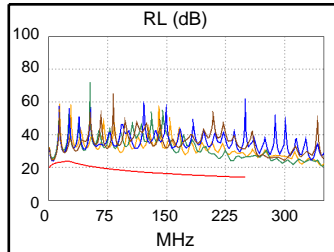
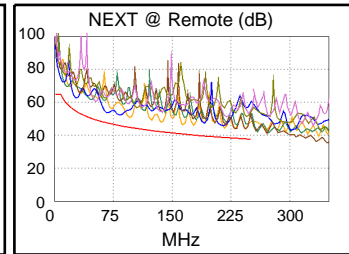
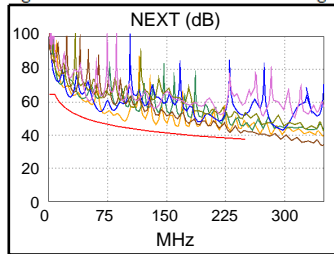
Wire Map (T568B)



Worst Case Margin Worst Case Value

PASS	MAIN	SR	MAIN	SR
Worst Pair	3,6-4,5	1,2-3,6	3,6-4,5	3,6-4,5
NEXT (dB)	3.5	5.5	3.5	5.9
Freq. (MHz)	244.0	217.0	244.0	244.5
Limit (dB)	37.8	38.7	37.8	37.8

PASS	MAIN	SR	MAIN	SR
Worst Pair	4,5	7,8	3,6	7,8
RL (dB)	1.9	1.9	9.5	1.9
Freq. (MHz)	5.6	5.9	233.5	5.9
Limit (dB)	22.1	22.1	14.3	22.1





Cable ID: 019

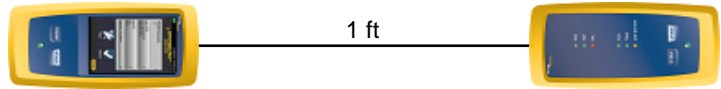
Test Limit: TIA Patch Cord Cat6 10.0m
Limits Version: V7.9
Date / Time: 06/25/2024 09:00:49 AM
Operator: SPENCER WARD
Headroom 6.6 dB (NEXT 1,2-4,5)
Cable Type: Cat 6A U/UTP
NVP: 68.2%

Main: Versiv
S/N: 1943100
Software Version: V6.11 Build 2
Calibration Date: 01/25/2024
Adapter: DSX-8000 (DSX-PC6)
S/N: 4757054

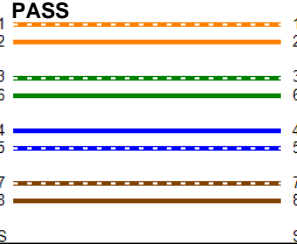
Test Summary: PASS

Remote: Versiv
S/N: 1943152
Software Version: V6.11 Build 2
Calibration Date: 01/25/2024
Adapter: DSX-8000R (DSX-PC6)
S/N: 47571093

Length (ft)	[Pair 1,2]	1
Prop. Delay (ns)	[Pair 3,6]	2
Delay Skew (ns)	[Pair 1,2]	0
Resistance (ohms)	[Pair 4,5]	0.29



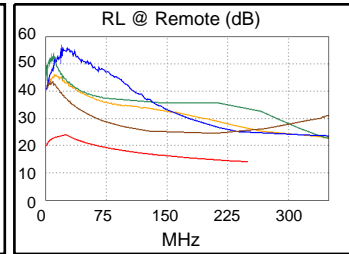
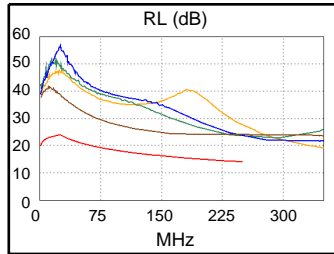
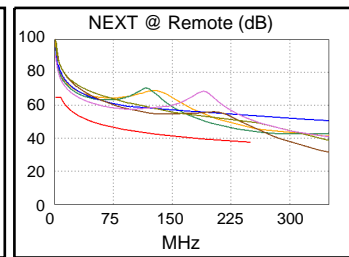
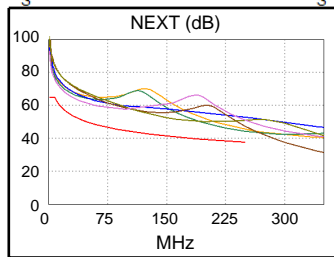
Wire Map (T568B)



Worst Case Margin Worst Case Value

PASS	MAIN	SR	MAIN	SR
Worst Pair	1,2-4,5	1,2-4,5	1,2-4,5	1,2-4,5
NEXT (dB)	6.6	6.8	6.7	6.8
Freq. (MHz)	249.5	250.0	250.0	250.0
Limit (dB)	37.7	37.6	37.6	37.6

PASS	MAIN	SR	MAIN	SR
Worst Pair	7,8	7,8	7,8	7,8
RL (dB)	8.4	8.4	8.9	9.1
Freq. (MHz)	167.0	145.0	235.5	194.0
Limit (dB)	15.8	16.4	14.3	15.1





Cable ID: 020

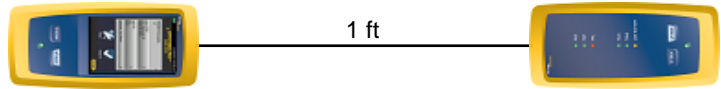
Test Limit: TIA Patch Cord Cat6 10.0m
Limits Version: V7.9
Date / Time: 06/25/2024 09:01:09 AM
Operator: SPENCER WARD
Headroom 5.8 dB (NEXT 1,2-3,6)
Cable Type: Cat 6A U/UTP
NVP: 68.2%

Main: Versiv
S/N: 1943100
Software Version: V6.11 Build 2
Calibration Date: 01/25/2024
Adapter: DSX-8000 (DSX-PC6)
S/N: 4757054

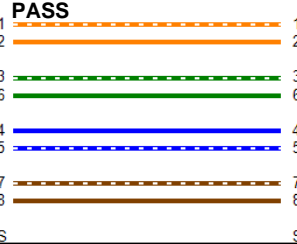
Test Summary: PASS

Remote: Versiv
S/N: 1943152
Software Version: V6.11 Build 2
Calibration Date: 01/25/2024
Adapter: DSX-8000R (DSX-PC6)
S/N: 47571093

Length (ft)	[Pair 1,2]	1
Prop. Delay (ns)	[Pair 3,6]	2
Delay Skew (ns)	[Pair 1,2]	0
Resistance (ohms)	[Pair 4,5]	0.28



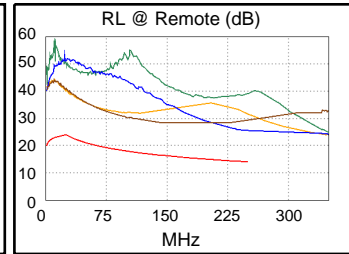
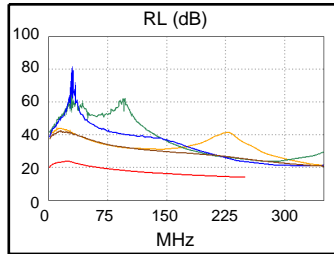
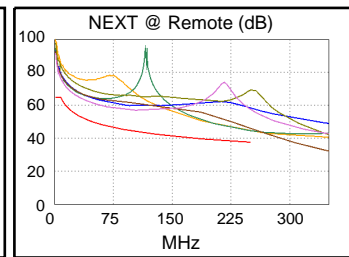
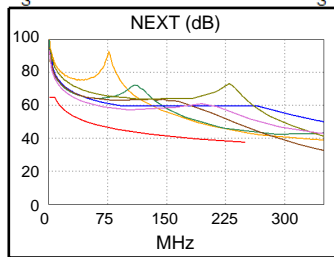
Wire Map (T568B)



Worst Case Margin Worst Case Value

PASS	MAIN	SR	MAIN	SR
Worst Pair	1,2-3,6	1,2-3,6	1,2-3,6	1,2-3,6
NEXT (dB)	5.8	6.8	5.8	6.8
Freq. (MHz)	250.0	250.0	250.0	250.0
Limit (dB)	37.6	37.6	37.6	37.6

PASS	MAIN	SR	MAIN	SR
Worst Pair	4,5	4,5	4,5	4,5
RL (dB)	9.5	11.3	9.5	11.3
Freq. (MHz)	250.0	249.5	250.0	249.5
Limit (dB)	14.0	14.0	14.0	14.0





Cable ID: 021

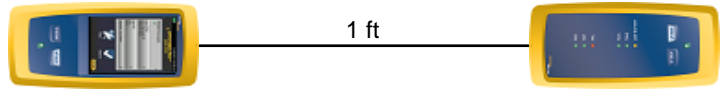
Test Limit: TIA Patch Cord Cat6 10.0m
Limits Version: V7.9
Date / Time: 06/25/2024 09:01:33 AM
Operator: SPENCER WARD
Headroom 4.2 dB (NEXT 1,2-4,5)
Cable Type: Cat 6A U/UTP
NVP: 68.2%

Main: Versiv
S/N: 1943100
Software Version: V6.11 Build 2
Calibration Date: 01/25/2024
Adapter: DSX-8000 (DSX-PC6)
S/N: 4757054

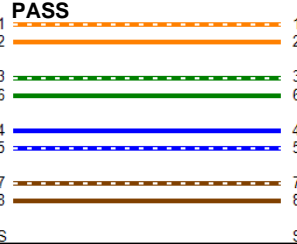
Test Summary: PASS

Remote: Versiv
S/N: 1943152
Software Version: V6.11 Build 2
Calibration Date: 01/25/2024
Adapter: DSX-8000R (DSX-PC6)
S/N: 47571093

Length (ft)	[Pair 1,2]	1
Prop. Delay (ns)	[Pair 4,5]	2
Delay Skew (ns)	[Pair 1,2]	0
Resistance (ohms)	[Pair 3,6]	0.29



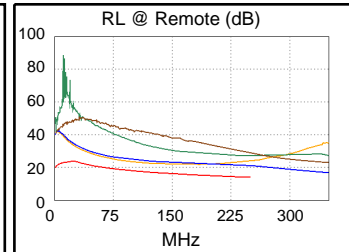
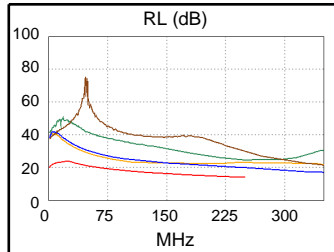
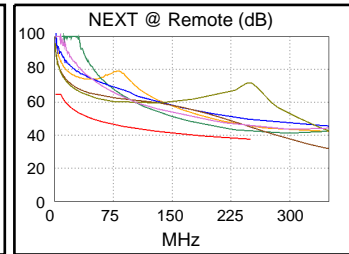
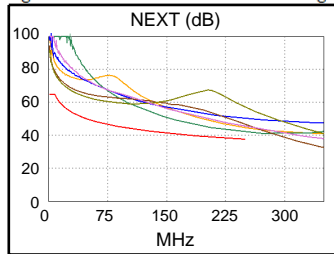
Wire Map (T568B)



Worst Case Margin Worst Case Value

PASS	MAIN	SR	MAIN	SR
Worst Pair	1,2-4,5	1,2-4,5	1,2-4,5	1,2-4,5
NEXT (dB)	4.2	4.7	4.3	4.8
Freq. (MHz)	249.5	249.5	250.0	250.0
Limit (dB)	37.7	37.7	37.6	37.6

PASS	MAIN	SR	MAIN	SR
Worst Pair	1,2	1,2	4,5	4,5
RL (dB)	5.3	5.3	5.8	7.1
Freq. (MHz)	129.5	129.5	250.0	250.0
Limit (dB)	16.9	16.9	14.0	14.0





Cable ID: 022

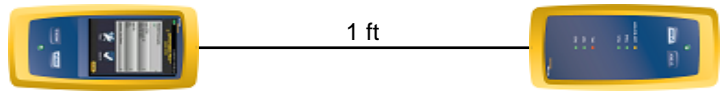
Test Limit: TIA Patch Cord Cat6 10.0m
Limits Version: V7.9
Date / Time: 06/25/2024 09:02:28 AM
Operator: SPENCER WARD
Headroom 4.4 dB (NEXT 3,6-4,5)
Cable Type: Cat 6A U/UTP
NVP: 68.2%

Main: Versiv
S/N: 1943100
Software Version: V6.11 Build 2
Calibration Date: 01/25/2024
Adapter: DSX-8000 (DSX-PC6)
S/N: 4757054

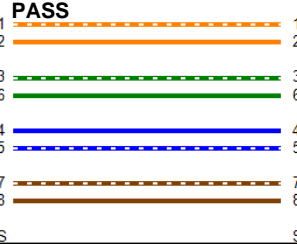
Test Summary: PASS

Remote: Versiv
S/N: 1943152
Software Version: V6.11 Build 2
Calibration Date: 01/25/2024
Adapter: DSX-8000R (DSX-PC6)
S/N: 47571093

Length (ft)	[Pair 1,2]	1
Prop. Delay (ns)	[Pair 4,5]	2
Delay Skew (ns)	[Pair 1,2]	0
Resistance (ohms)	[Pair 4,5]	0.29



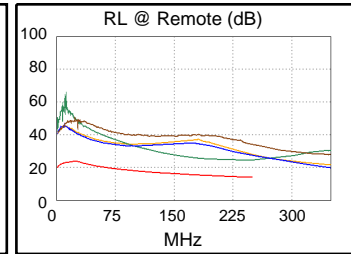
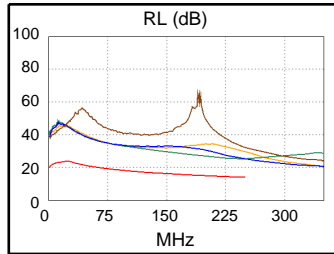
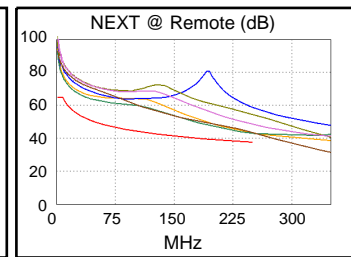
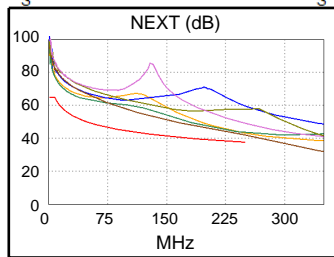
Wire Map (T568B)



Worst Case Margin Worst Case Value

PASS	MAIN	SR	MAIN	SR
Worst Pair	3,6-4,5	1,2-4,5	3,6-4,5	1,2-4,5
NEXT (dB)	4.4	5.4	4.5	5.5
Freq. (MHz)	249.5	249.5	250.0	250.0
Limit (dB)	37.7	37.7	37.6	37.6

PASS	MAIN	SR	MAIN	SR
Worst Pair	3,6	3,6	3,6	3,6
RL (dB)	11.1	9.8	11.2	10.3
Freq. (MHz)	247.0	220.0	250.0	248.0
Limit (dB)	14.1	14.6	14.0	14.0





Cable ID: 023

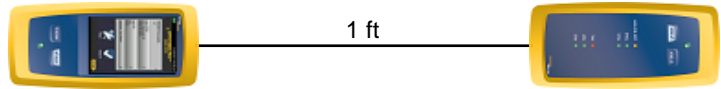
Test Limit: TIA Patch Cord Cat6 10.0m
Limits Version: V7.9
Date / Time: 06/25/2024 09:02:45 AM
Operator: SPENCER WARD
Headroom 4.7 dB (NEXT 1,2-4,5)
Cable Type: Cat 6A U/UTP
NVP: 68.2%

Main: Versiv
S/N: 1943100
Software Version: V6.11 Build 2
Calibration Date: 01/25/2024
Adapter: DSX-8000 (DSX-PC6)
S/N: 4757054

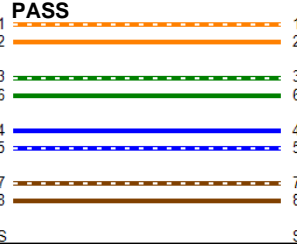
Test Summary: PASS

Remote: Versiv
S/N: 1943152
Software Version: V6.11 Build 2
Calibration Date: 01/25/2024
Adapter: DSX-8000R (DSX-PC6)
S/N: 47571093

Length (ft)	[Pair 1,2]	1
Prop. Delay (ns)	[Pair 4,5]	2
Delay Skew (ns)	[Pair 1,2]	0
Resistance (ohms)	[Pair 4,5]	0.30



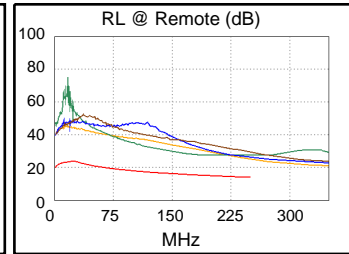
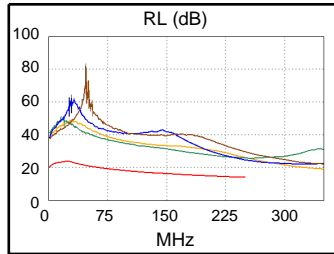
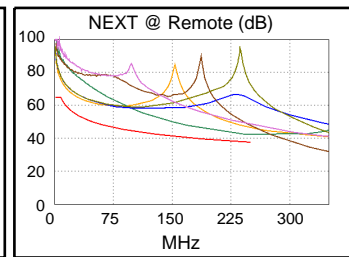
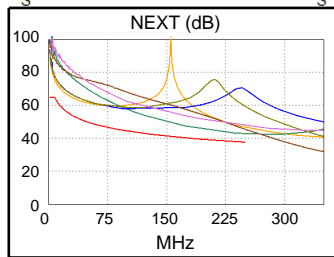
Wire Map (T568B)



Worst Case Margin Worst Case Value

PASS	MAIN	SR	MAIN	SR
Worst Pair	1,2-4,5	1,2-4,5	1,2-4,5	1,2-4,5
NEXT (dB)	5.0	4.7	5.0	4.7
Freq. (MHz)	250.0	250.0	250.0	250.0
Limit (dB)	37.6	37.6	37.6	37.6

PASS	MAIN	SR	MAIN	SR
Worst Pair	4,5	1,2	4,5	1,2
RL (dB)	10.6	11.1	10.6	11.1
Freq. (MHz)	249.5	249.5	249.5	249.5
Limit (dB)	14.0	14.0	14.0	14.0





Cable ID: 024

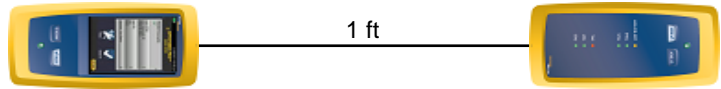
Test Limit: TIA Patch Cord Cat6 10.0m
Limits Version: V7.9
Date / Time: 06/25/2024 09:03:07 AM
Operator: SPENCER WARD
Headroom 4.5 dB (NEXT 1,2-3,6)
Cable Type: Cat 6A U/UTP
NVP: 68.2%

Main: Versiv
S/N: 1943100
Software Version: V6.11 Build 2
Calibration Date: 01/25/2024
Adapter: DSX-8000 (DSX-PC6)
S/N: 4757054

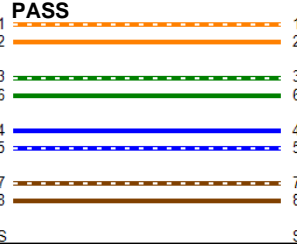
Test Summary: PASS

Remote: Versiv
S/N: 1943152
Software Version: V6.11 Build 2
Calibration Date: 01/25/2024
Adapter: DSX-8000R (DSX-PC6)
S/N: 47571093

Length (ft)	[Pair 1,2]	1
Prop. Delay (ns)	[Pair 4,5]	2
Delay Skew (ns)	[Pair 1,2]	0
Resistance (ohms)	[Pair 4,5]	0.30



Wire Map (T568B)



Worst Case Margin Worst Case Value

PASS	MAIN	SR	MAIN	SR
Worst Pair	1,2-3,6	1,2-3,6	1,2-3,6	1,2-3,6
NEXT (dB)	4.5	5.0	4.5	5.1
Freq. (MHz)	250.0	249.5	250.0	250.0
Limit (dB)	37.6	37.7	37.6	37.6

PASS	MAIN	SR	MAIN	SR
Worst Pair	4,5	1,2	4,5	1,2
RL (dB)	10.5	11.9	10.5	11.9
Freq. (MHz)	250.0	250.0	250.0	250.0
Limit (dB)	14.0	14.0	14.0	14.0

