



# Installation Guide

VIGI Solar System Controller

© 2024 TP-Link 7106511595 REV1.0.1

# Contents

---

<b>Chapter 1 Overview</b>	<b>1</b>
---------------------------	----------

<b>Chapter 2 Installation</b>	<b>3</b>
-------------------------------	----------

2.1 Package Contents .....	3
----------------------------	---

2.2 Safety Precautions .....	3
------------------------------	---

2.3 Installation.....	4
-----------------------	---

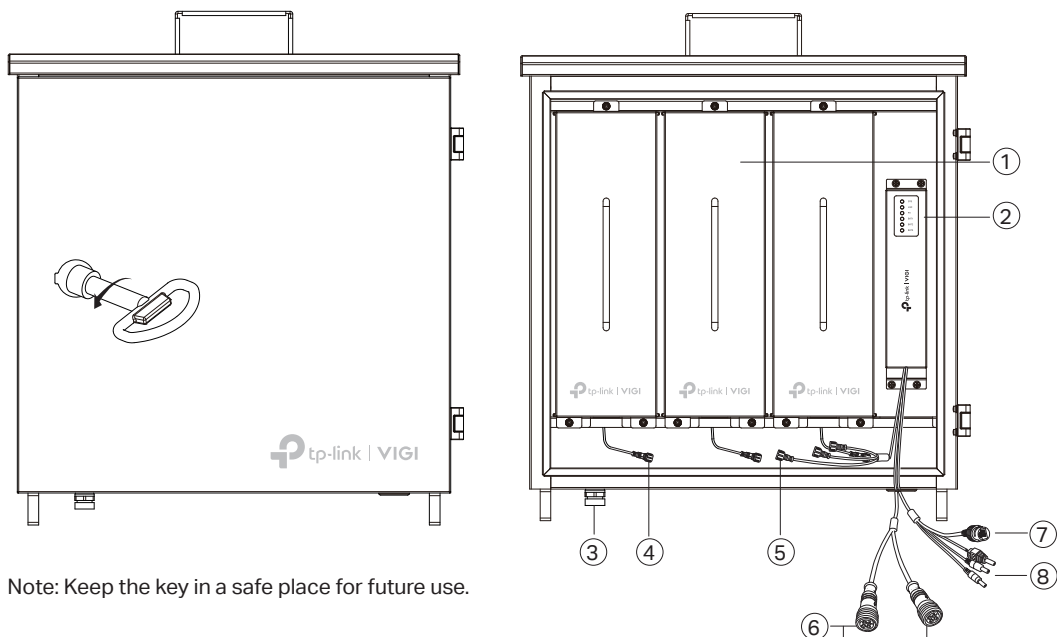
<b>Chapter 3 Configuration</b>	<b>15</b>
--------------------------------	-----------

<b>Appendix FAQ</b>	<b>16</b>
---------------------	-----------

## Chapter 1 Overview

The VIGI Solar System Controller should work with VIGI 180W Solar Mount, and VIGI Solar Panels.

Open the waterproof box with the provided key and the solar system controller is shown as below.



Note: Keep the key in a safe place for future use.

- ① Modular Battery\*3
- ② Controller LED
- ③ Explosion-proof Valve: Used to help discharge the exhaust gas in the waterproof box when the battery explodes to ensure safety.
- ④ Three-pin female connector for connecting the controller
- ⑤ Three-pin male connector for connecting the modular battery
- ⑥ Four-pin female connector for connecting the solar panel
- ⑦ RJ45 Network interface for connecting network devices such as 4G routers and bridges
- ⑧ Load Interface for connecting cameras
  - Load Interface #1: 9-12.6VDC
  - Load Interface #2: 9-12.6VDC
  - Load Interface #3: 12VDC

- Controller LED

LED	Indication
SYS	<b>On:</b> The system is working and the load is enabled. <b>Flashing:</b> The system is working and the load is disabled. <b>Off:</b> The system is not working.
LAN	<b>On:</b> The RJ45 interface is connected. <b>Flashing:</b> Data is being transferred. <b>Off:</b> The RJ45 interface is not connected.
PV	<b>On:</b> PV panels are connected and have voltage. <b>Off:</b> PV panels have no voltage.
BAT1/2/3	<b>On:</b> Battery power is higher than 20%. <b>Slow Flashing:</b> Battery power is lower than 20%. <b>Off:</b> Battery is abnormal.

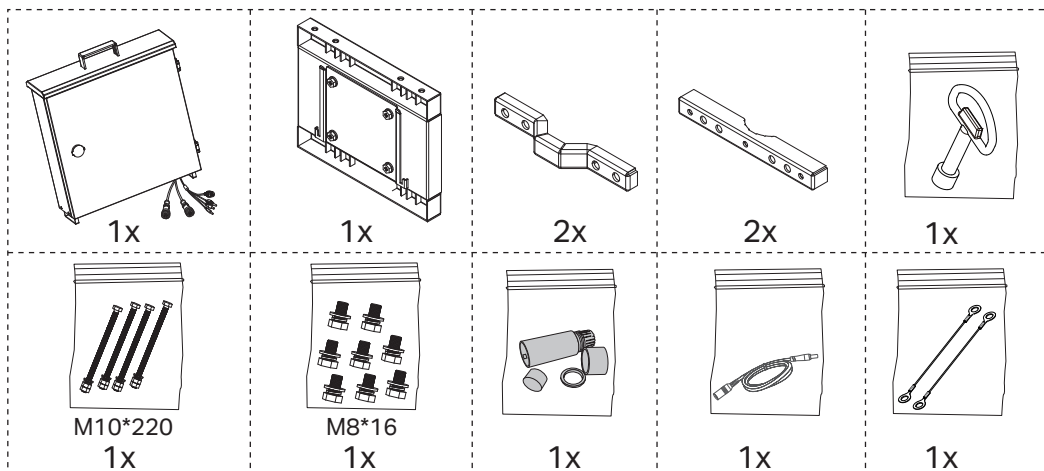
## Chapter 2 Installation

---

### 2.1 Package Contents

---

Make sure that the package contains the following items. Please contact your distributor, if any of the listed items are damaged or missing. The figures are for demonstration only. The actual items may differ in appearance and quantity from what is depicted.



### 2.2 Safety Precautions

---

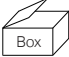

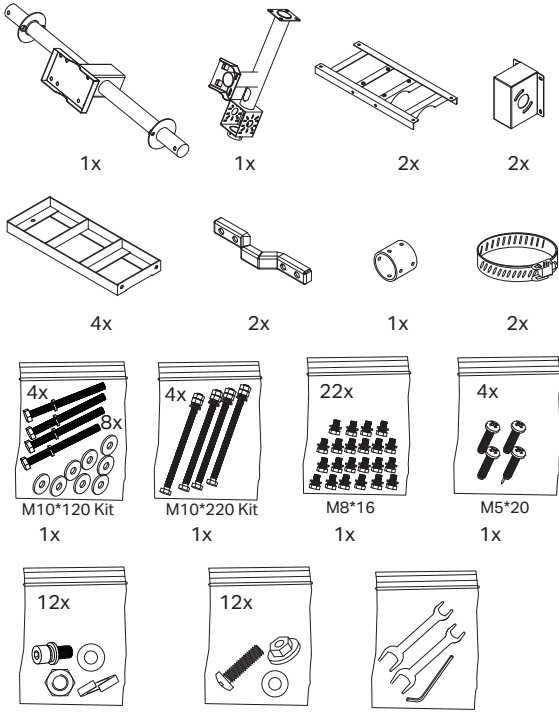
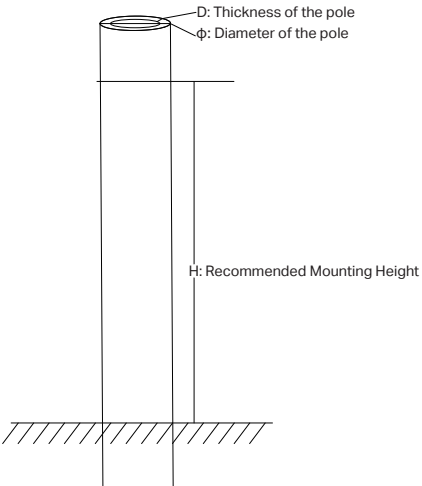
- During installation, collision and knocking are strictly prohibited to avoid damage.
- When placing the modular battery, make sure that the solar panel is facing upwards and placed horizontally. Uneven ground may scratch or damage the solar panel.
- Make sure there are no fixed obstructions. If installed around buildings or trees, it is necessary to ensure the installation height of the battery panel is higher than the obstacle.
- All modular battery load interfaces should take strict waterproof measures to avoid short circuit, leakage, and other problems.

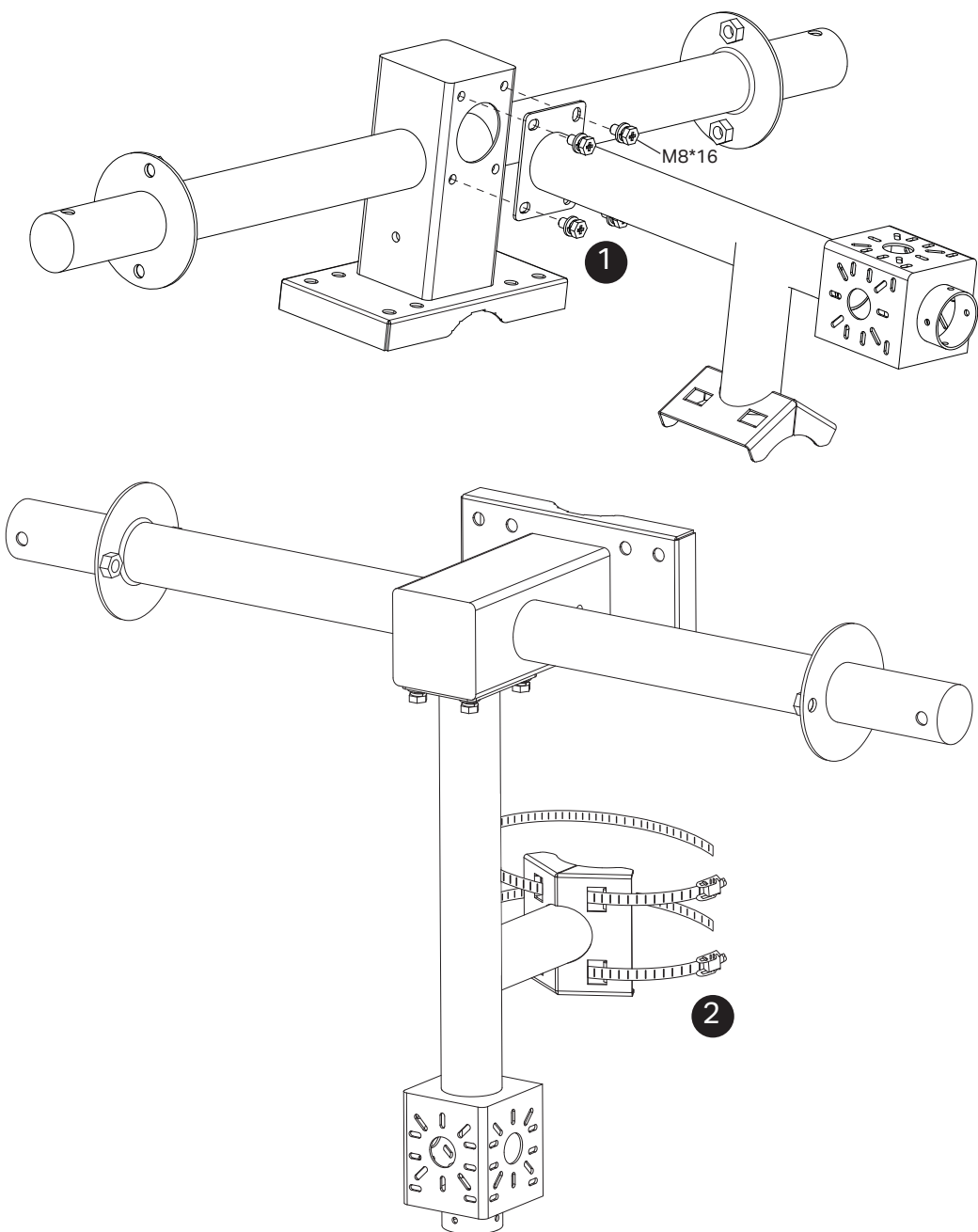
## 2.3 Installation

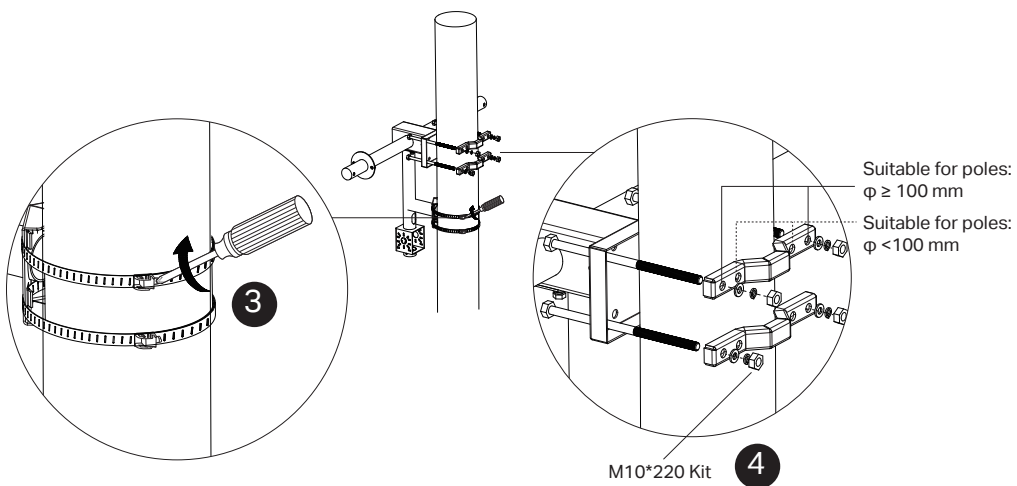
### Step 1. Prepare all components

The VIGI Solar System Controller should work with VIGI 180W Solar Mount, and VIGI Solar Panels.

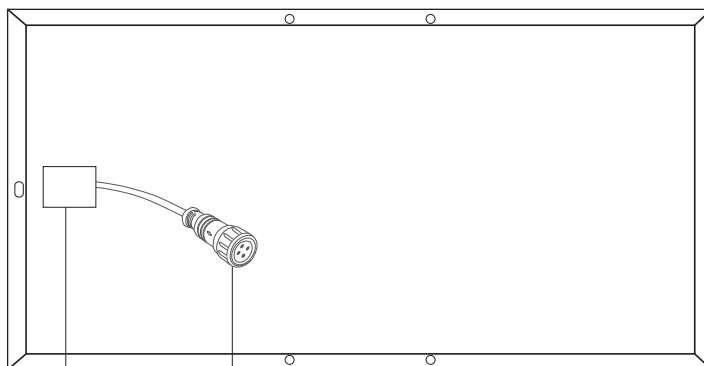
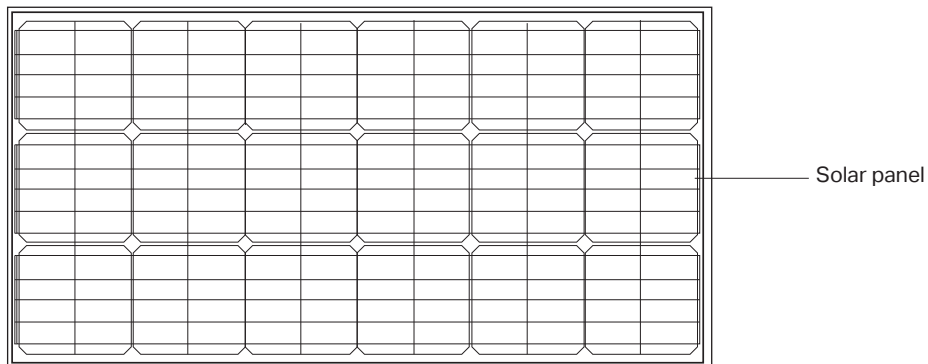
### Step 2. Install the solar mount

 Box	
 <p>1x</p> <p>1x</p> <p>2x</p> <p>2x</p> <p>4x</p> <p>2x</p> <p>1x</p> <p>2x</p> <p>4x</p> <p>3x</p> <p>M10*120 Kit</p> <p>1x</p> <p>4x</p> <p>M10*220 Kit</p> <p>1x</p> <p>22x</p> <p>M8*16</p> <p>1x</p> <p>4x</p> <p>M5*20</p> <p>1x</p> <p>12x</p> <p>M8*20 Kit</p> <p>1x</p> <p>12x</p> <p>M4*20 Kit</p> <p>1x</p> <p>1x</p>	 <p>D: Thickness of the pole <math>\phi</math>: Diameter of the pole</p> <p>H: Recommended Mounting Height</p> <p><math>D \geq 5 \text{ mm}</math></p> <p><math>120 \text{ mm} \leq \phi \leq 160 \text{ mm}</math></p> <p><math>3 \text{ m} \leq H \leq 5 \text{ m}</math></p> <p>Note: Keep no obstacles within 1.5 meters of the center diameter of the pole.</p>



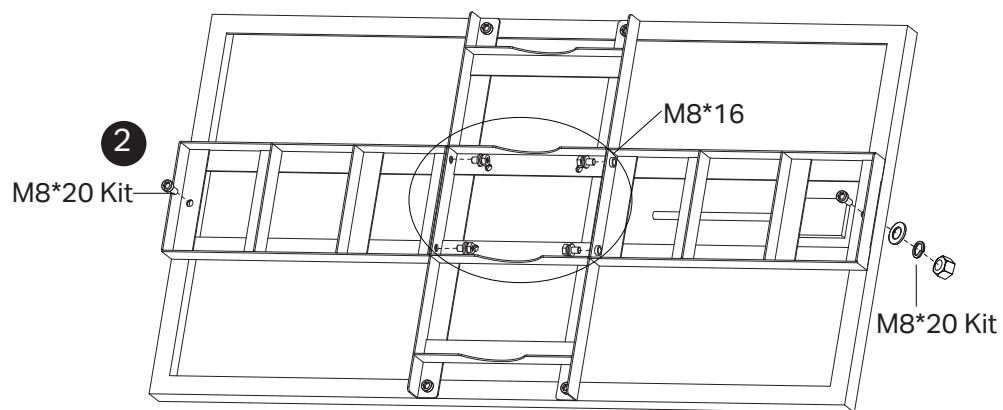
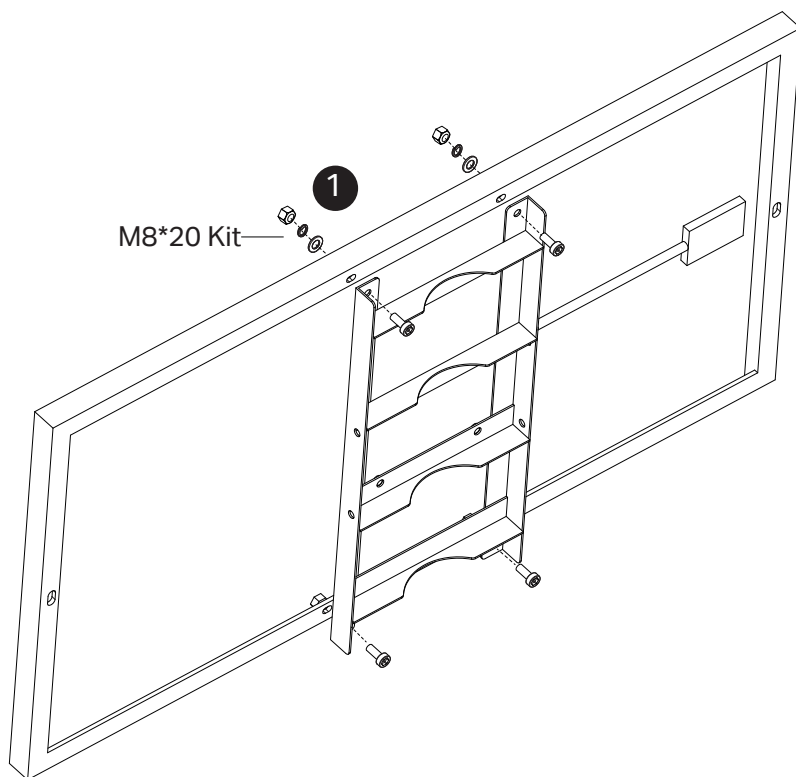


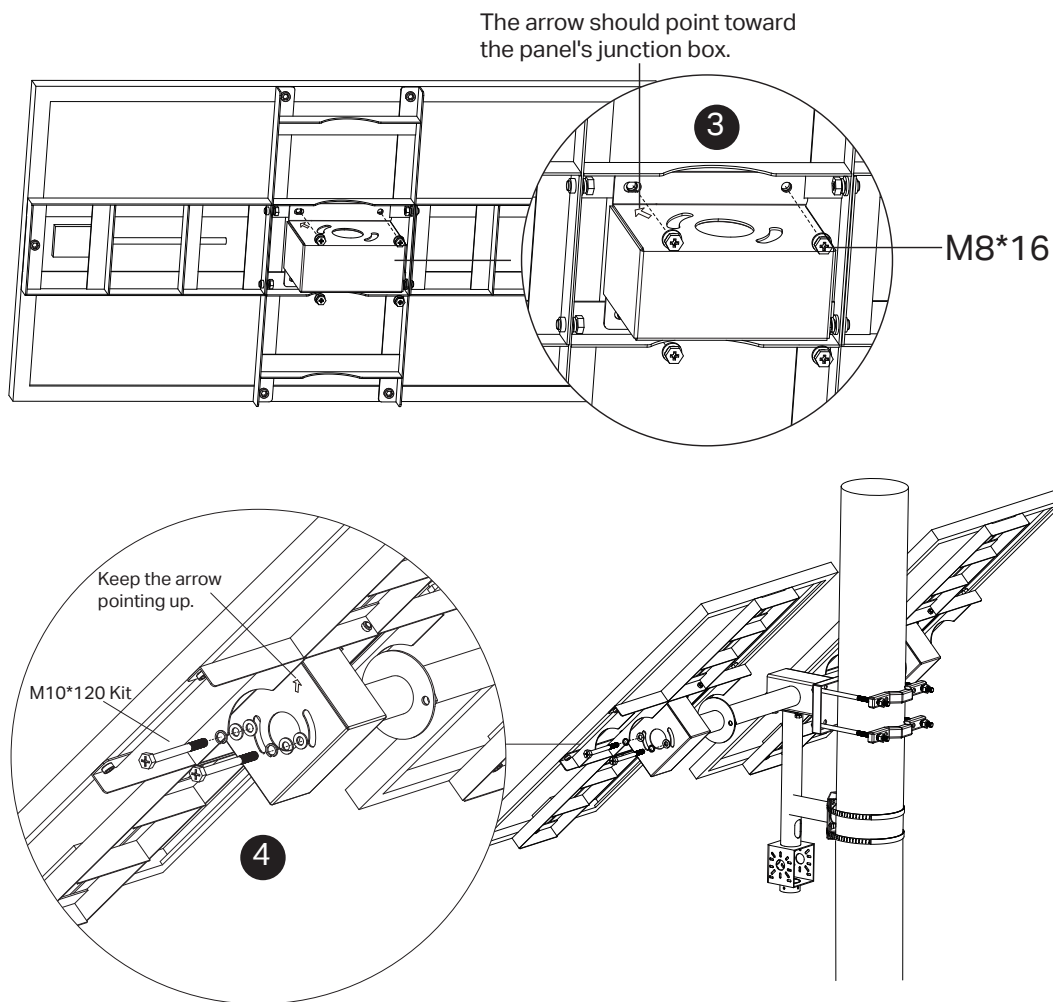
### Step 3. Install the solar panel



Junction box

Four-pin male connector for connecting solar system controller

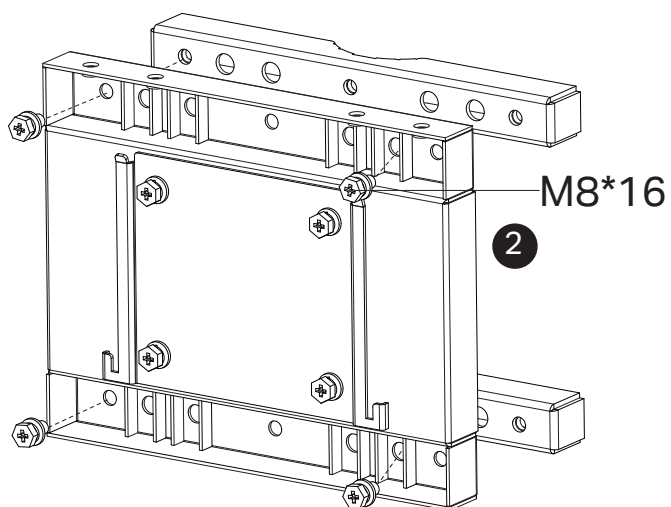
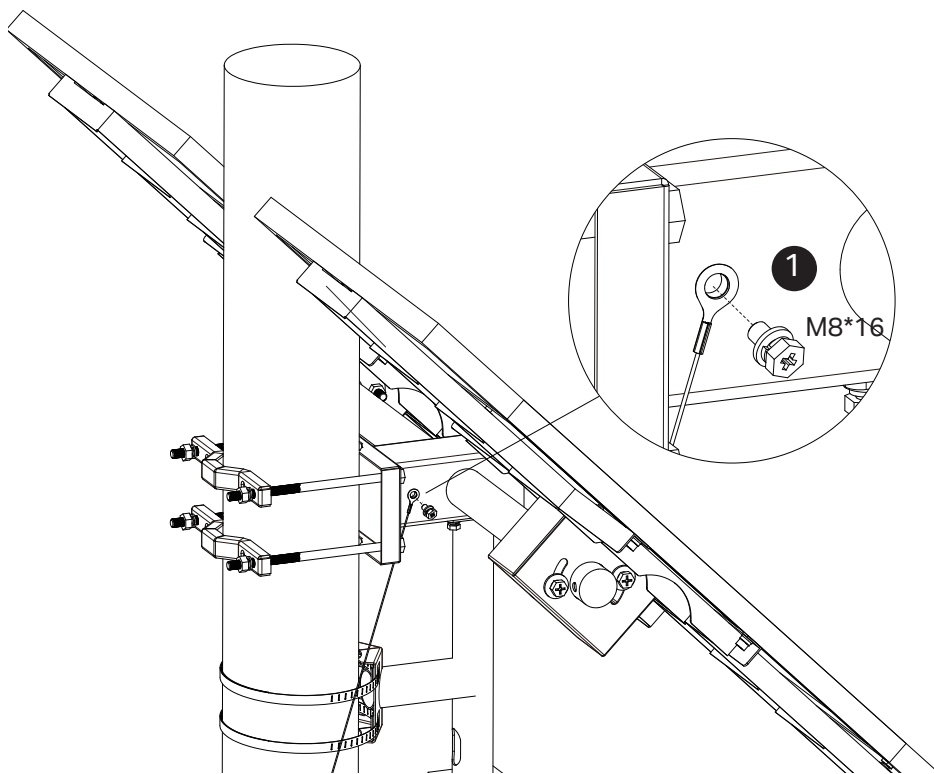


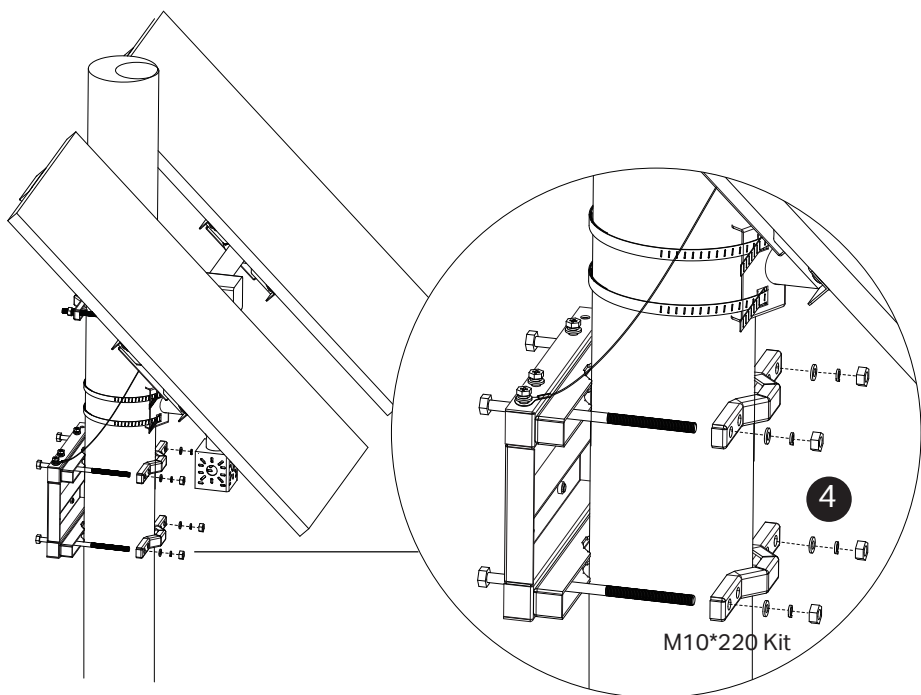
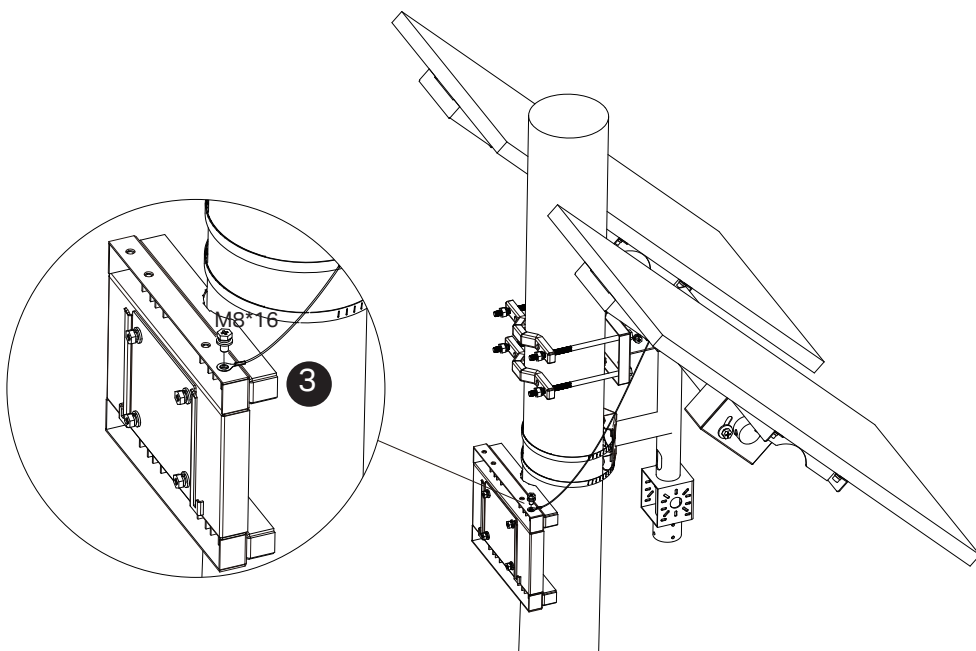


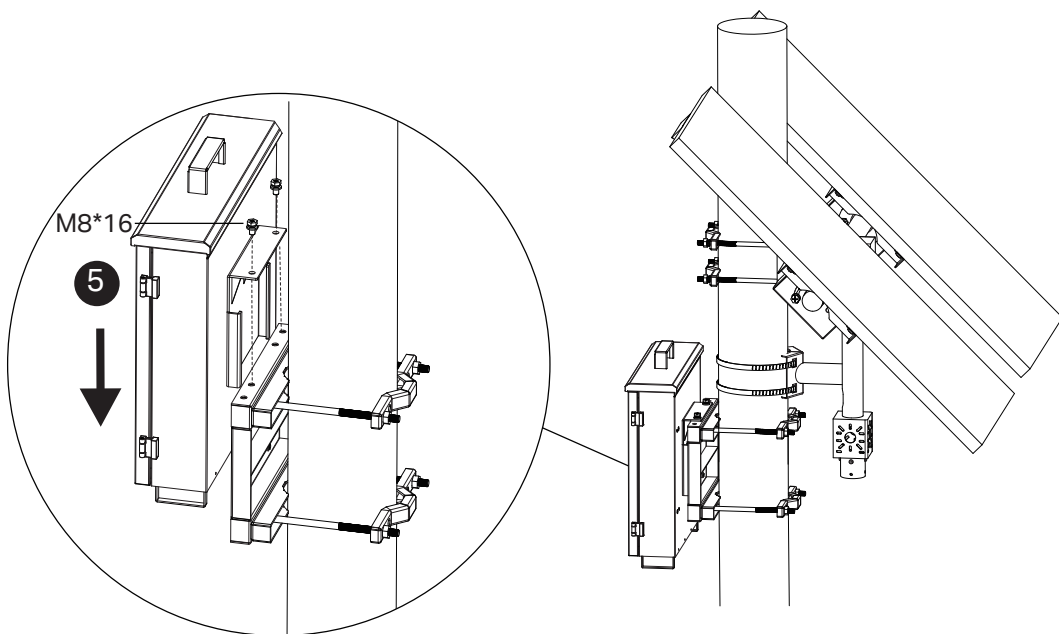
Recommended solar panel inclination angles (the following inclination angles correspond to the holes on the mount):

Latitude Range	Recommended Inclination
0-5°	5°
5-15°	15°
15-25°	25°
25-35°	35°
35-45°	45°
>45°	55°

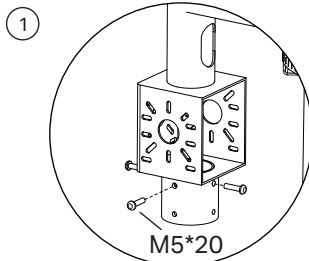
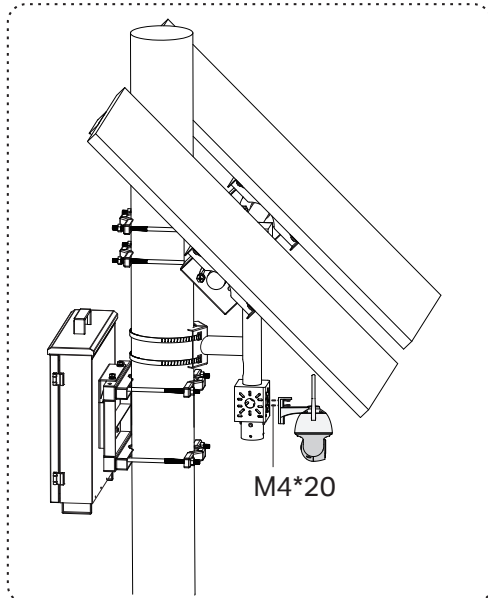
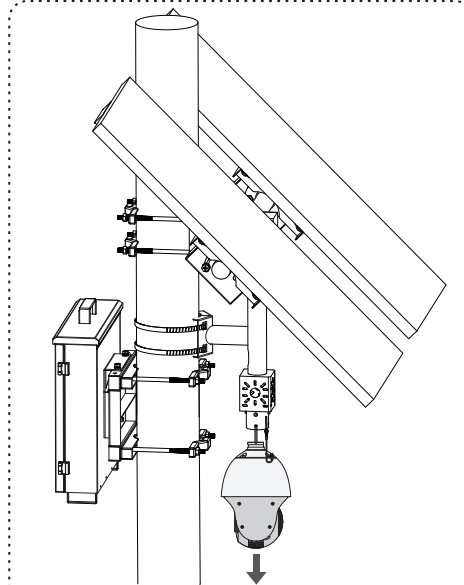
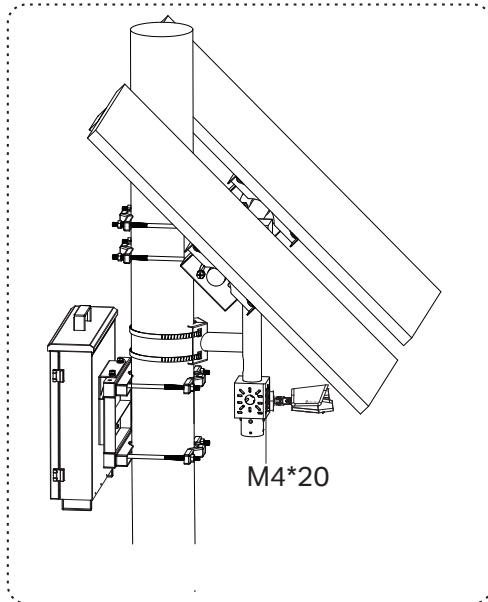
## Step 4. Install the solar system controller



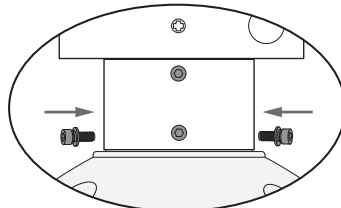




## Step 5. Install the cameras

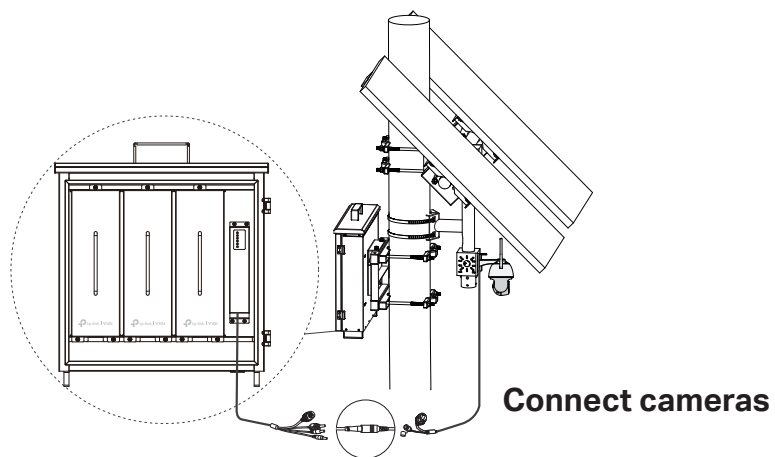
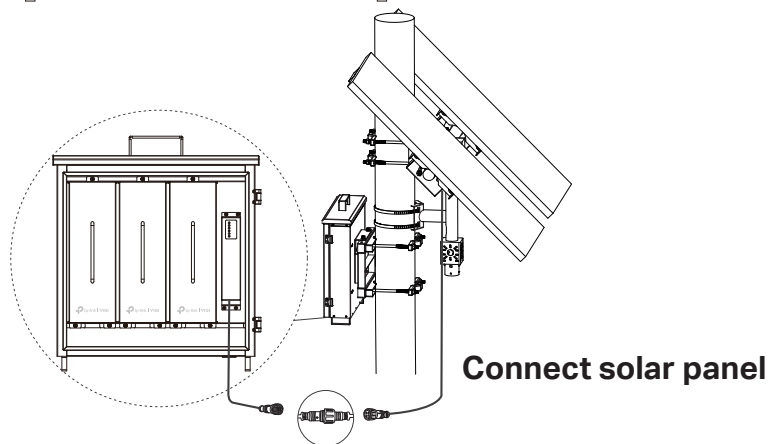
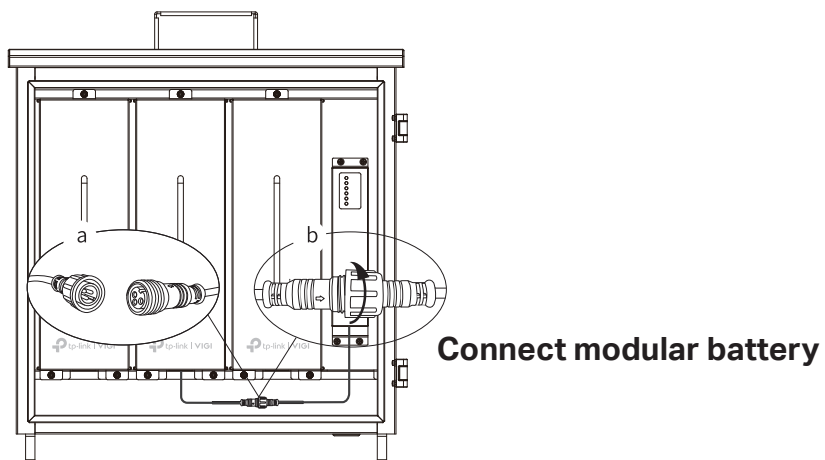


② Use the screws that came with your camera.



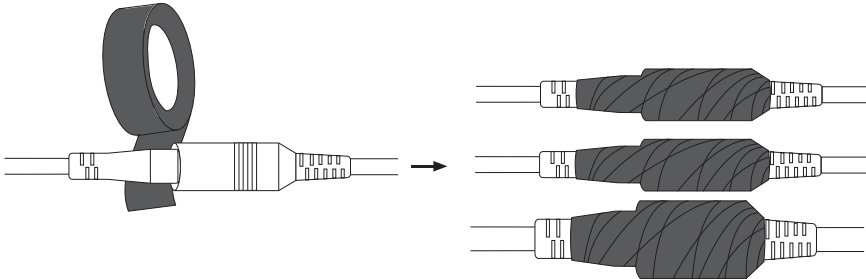
**Note:** If the product is used in a windy area, it is recommended to tie VIGI 5-Series cameras directly to the pole to reduce the impact of strong wind on the image quality of the camera.

## Step 6. Connect the cables



## Step 7. Waterproof cables

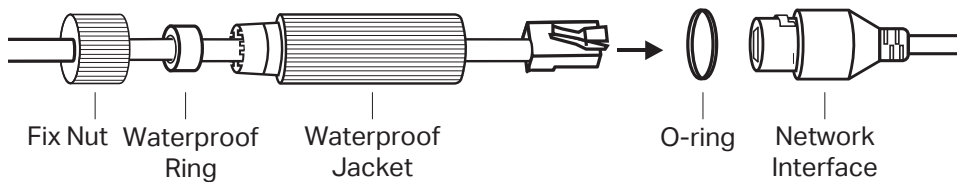
1. After connecting the camera to the load interface, wrap the connection with over two layers of waterproof tape (not included).



**Note:** When using waterproof tape, wrap the first layer, then cut. Apply a second layer, ensuring no gaps between the connection and tape for secure waterproofing.

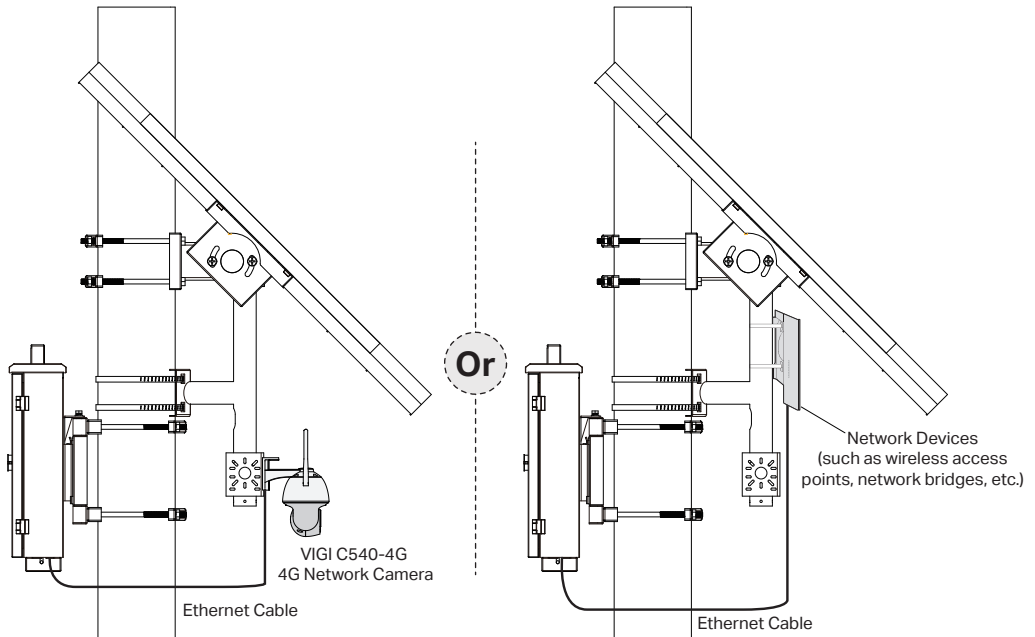
2. Install the waterproof cable attachments for the network interface.

**Note:** Make sure each part is securely attached and the waterproof rings are flush to keep out water.



## Chapter 3 Configuration

Here is a typical network topology for the VIGI solar system controller.



1. Connect the RJ45 network interface of the controller to the network devices (such as access points, bridges, and 4G cameras).
2. Download and install the latest TP-Link VIGI app.



or



3. Open the app and log in with your TP-Link ID. If you don't have an account, sign up first.
4. Tap the + button on the top right and follow the app instructions to add the VIGI solar system controller. Then you can control and manage the VIGI solar system controller via the VIGI app remotely.

## Appendix FAQ

---

### **Q1. The controller LED status is abnormal.**

- SYS LED is off: It may be out of power or the system board is damaged.
- LAN LED is off: There is no connection. Check whether the RJ45 interface is firmly connected to the network device.
- PV LED is off: The solar panel is not connected or works abnormally and cannot generate electricity.
- BAT LED is off: The battery is working abnormally.

### **Q2. Short system runtime and short monitoring time.**

- The battery board is disconnected: Check whether the solar panel interface is connected well, and ensure that the solar panel is in working condition.
- The solar panel is blocked: Check whether the solar panel is blocked by foreign objects or the front of the solar panel is dirty, which will affect its power generation efficiency.
- Inefficient equipment system: Confirm the power consumption of the equipment. If the power consumption is large, it is recommended to replace it with a solar-powered product with a higher specification.

## Safety Information

- Do not attempt to disassemble, repair, or modify the device.
- Do not use damaged charger or USB cable to charge the device.
- Do not use any other chargers than those recommended.
- Adapter shall be installed near the equipment and shall be easily accessible.
- Use only power supplies which are provided by manufacturer and in the original packing of this product. If you have any questions, please don't hesitate to contact us.
- Avoid disposal of a battery into fire or a hot oven, or mechanically crushing or cutting of a battery, that can result in an explosion.
- Place the device with its bottom surface downward. Install it at stable places, and prevent it from falling.
- Keep the device away from fire or hot environments. DO NOT immerse in water or any other liquid.

This equipment is not suitable for use in locations where children are likely to be present. This equipment is not suitable for use in locations where children are likely to be present, such as family environment, school, children's playground and so on.

Please read and follow the above safety information when operating the device. We cannot guarantee that no accidents or damage will occur due to improper use of the device. Please use this product with care and operate at your own risk.

### CAUTION!

Avoid replacement of a battery with an incorrect type that can defeat a safeguard.

Avoid disposal of a battery into fire or a hot oven, or mechanically crushing or cutting of a battery, that can result in an explosion.

Do not leave a battery in an extremely high temperature surrounding environment that can result in an explosion or the leakage of flammable liquid or gas.

Do not leave a battery subjected to extremely low air pressure that may result in an explosion or the leakage of flammable liquid or gas.

### CAUTION!

Risk of fire or explosion if the battery is replaced by an incorrect type.

## EU Declaration of Conformity

TP-Link hereby declares that the device is in compliance with the essential requirements and other relevant provisions of directives 2014/30/EU, 2014/35/EU, 2011/65/EU and (EU)2015/863.

The original EU Declaration of Conformity may be found at <https://www.tp-link.com/en/support/ce/>

## UK Declaration of Conformity

TP-Link hereby declares that the device is in compliance with the essential requirements and other relevant provisions of the Electromagnetic Compatibility Regulations 2016 and Electrical Equipment (Safety) Regulations 2016.

The original UK Declaration of Conformity may be found at <https://www.tp-link.com/support/ukca/>

For technical support, user guides and other information,  
please visit <https://www.tp-link.com/support/>

