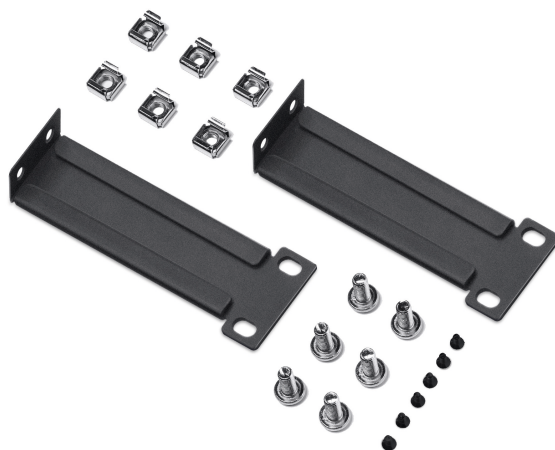


# 226mm Desktop Switch Rack Mount

MODEL: RackMount Kit-D226

## Features

- Compatible with TP-Link 226mm desktop switch with rack mount holes and other products.
- If not sure about the model of the switch, please measure the size of the mounting ears and the hole spacing of the switch, can be used if they match.
- Reliable metal materials are selected, which are sturdy and durable, and the installation is firm and not easy to fall.
- There are many compatible models, please pay attention to the size of the machine.



|  |  |
|--|--|
| Material   | Metal  |
| List of TP-Link products supported by RackMount Kit-D226 | ER7212PC / ER7206 / ER707-M2 / ER706W / ER706W-4G / DR3650v-4G / ER706WP-4G / ER7410PC-M2 / SG2210XMP-M2 |