






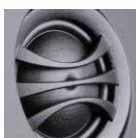






THE BOOK

2016

Milestones

1976		Ken Humphreys & Ed Hasse developed and manufactured the first architectural loudspeaker.
1984-94		Designed and manufactured in-wall speakers for Polk, JBL, Sonance, Niles and Bang & Olufsen.
1988		Designed the world's first vibration canceling in-ceiling mounted subwoofer system.
1993		Jeremy Burkhardt & Ed Hasse introduced SpeakerCraft as its own brand.
1994		Offered the first lifetime warranty for architectural speakers.
1997		Patented the first "aimable" loudspeaker for in-ceiling installation. The legacy continues to this day
2005		Invented the first system to control the iPod® and distribute both music and metadata throughout the home.
2010		Patented axially stabilized DPSD™ Tweeter.
2014		Introduced two new tool-less mounting systems allowing 8" speakers to be used where previously only 6" speakers could be installed.
2015		Shipping over 140 innovations.

Seek Reinvention

Each day we wake up seeing every new day as an incredible opportunity for us to reshape, reform, and rethink the way we do things. We ask ourselves: What can we do differently? What can we do better? How can we be the best? Then we do it. When we brought the original inventors of the in-wall speaker back together to launch Origin Acoustics, we were presented with an amazing opportunity for us to draw upon our rich experiences to reinvent the architectural speaker. Our team reflects inward with a dedicated philosophy marked by evaluation, constant change and improvement. Reinvention—this is our lifeblood.

Music and sound embellish our lives with vigor. They stir the creative mind, energize the soul, and move the heart. Our mission at Origin Acoustics is to honor music and the artists of sound by producing flawless stages for in-home performances. Since inventing the original in-wall speaker four decades ago, we've continued to innovate 1000's of award winning products. Our goal has and always will be to create the best sounding loudspeakers you can own. We will not stop until this is achieved. Reinvention is what we live for.

You've been deliberately chosen as our partner in your market to help us cultivate an exuberant community in this industry. We're forever thankful for your loyal support and demand for what we do, and don't take this for granted. We look forward to being more than just a manufacturer to you, but most importantly a partner and friend in business whom you can share quality and meaningful life experiences with. We're in your corner, constantly looking at new ways to serve you best and help your business flourish. This is our commitment to you.



— Jeremy Burkhardt, CEO



Contents

Revolutionary Technologies	5
New Inventions & Patents	5
Installation is a Zip	6
More Bass, Less Space	7
In-Ceiling Speakers	8
Director Collection	8
Director Dual Tweeter Collection	14
Multi-Finish Collection	16
Producer Collection	18
Producer Dual Tweeter	20
Thinfit Collection	22
In-Wall Speakers	24
THTR Collection	24
LCR 60 Collection	26
LCR 30 Collection	28
C60 Collection	30
Subwoofers	32
Composer Subwoofers	32
Director Subwoofers	34
Basic Subwoofers	36
Outdoor Speakers	38
Design Services	38
Seasons Landscape Collection	40
Seasons Landscape Collection Systems	43
Seasons Landscape Mounts	44
Seasons Landscape Amplifiers	45
Seasons Outdoor Collection	46
Electronics	50
Amplifiers	51
Volume Controls	54
Installation Accessories	55
Sound Enclosures	56
New Construction Brackets	57
Paint Shields	58
Cover Plates & Grilles	59
Innovations	60

7 New Inventions / Patents

Tri-Linear Configuration* (TLC)

The Director Collection features three drivers in a unique linear alignment. This three-way design allows for broader frequency response and superior power handling. The 3-inch midrange is made of hand-select materials and the tweeter is our proprietary DPSD™ radiator.

Director Technology

The ability to point or “direct” the sound toward a specific area in the room is critical when the speakers are mounted in the ceiling. The Director 80 and 100 series features a mid-tweeter assembly that can be adjusted to focus the sound toward the listening area regardless of the speaker’s position in the ceiling. This allows for the speakers to be used in many applications. One example is a home theater where the soundstage, relative to the screen, is crucial. The seating area can be off axis and still remain in the “sweet-spot.”

Dual Plane Stabilized Diaphragm (DPSD™)

A patented innovation that dramatically improves high-frequency performance, the DPSD™ radiator uses a unique suspension design that maintains the tweeters alignment throughout a larger frequency range. The suspension is attached at both the voice-coil and the peak of the dome allowing the driver to be crossed over at a much lower frequency. This results in improved dispersion and decreased distortion.

X-Wave* Woofer Surround

While in motion, frequencies between 700-1,400 Hz typically run up the cone of a woofer and are reflected back and forth from the center of the driver. This creates unwanted harmonic distortion. The X-Wave* surround found in Origin woofers absorbs these frequencies reducing distortion and maintaining driver stability. This design also maximizes cone area by reducing the width of the surround.

Progressive Suspension

As the driver travels to the limits of its excursion, the suspension, made up of the spider and the surround, becomes more rigid, exerting more control on the movement of the cone. The result is increased, clean power output throughout the driver’s frequency range.



Compression Molded Woofer Baskets

Utilizing the latest techniques and materials in plastic fabrication, Origin is able to create basket designs with superior stability and acoustic neutrality. These baskets combine with the driver suspension to increase linearity and improve overall performance.

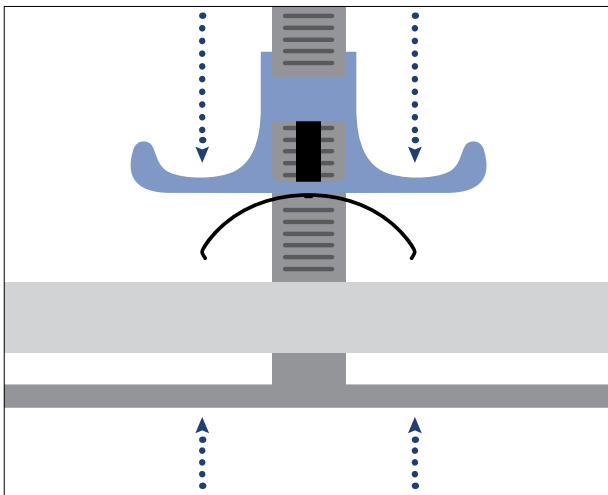
Zip-Clip* Mounting System

It is important when installing a loudspeaker in the ceiling that it be stable and secure, restricting the vibration of the assembly and limiting transfer of energy into the wall. The revolutionary Zip-Clip* system spreads the weight of the speaker over a larger area than typical mounting systems accomplishing this result with minimal effort. Spring-loaded clips also create more uniform pressure against the drywall eliminating any warping or distortion of the speaker baffle.

*Patent Pending

Installation is a Zip

It is important when installing a loudspeaker in the ceiling that it be stable and secure, restricting the vibration of the assembly and limiting transfer of energy into the wall. The revolutionary Zip-Clip* (patent pending) system spreads the weight of the speaker over a larger area than typical mounting systems accomplishing this result with minimal effort. Spring-loaded clips also create more uniform pressure against the drywall eliminating any warping or distortion of the speaker baffle as well as eliminating any stress or cracking of the drywall.



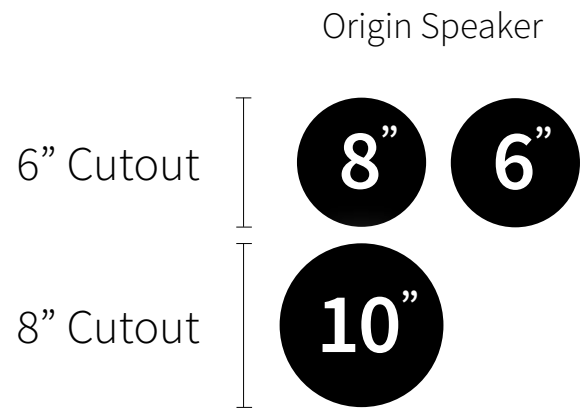
The Zip-Clips* are squeezed into place by hand sandwiching the drywall between the outside flange and the clips inside the wall.



The process requires no tools. A revolutionary design that incorporates a mounting ring that fits into the hole in the drywall and is then secured by four clips that are hand squeezed into place creating the optimum amount of torque to secure the speaker. The speaker assembly is then inserted into the mounting ring and twisted clockwise to lock it in place.

More Bass, Less Space

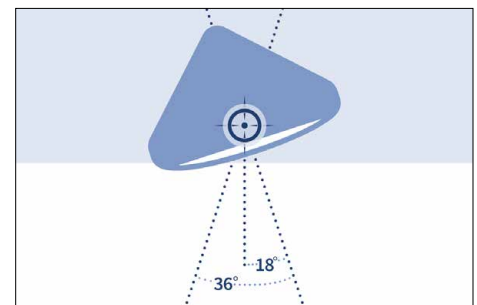
Creating deep dynamic bass requires moving lots of air. This means bigger drivers and typically bigger enclosures. The Origin team has developed a new design for the Director Collection that allows us to fit an 8-inch woofer into a typical 6-inch baffle. Even more impressive we are able to fit a 10-inch woofer into a typical 8-inch baffle. What does this mean? It's more bass in less space. The footprint in the ceiling is smaller and less obtrusive, but the sound they deliver must be heard to be believed.



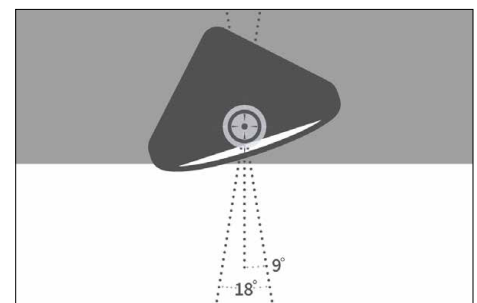
WIDE DISPERSION: Greater dispersion means more coverage from every speaker and it creates a much larger listening area in every room.



LIMITED DISPERSION: A typical in-ceiling speaker's tight dispersion pattern creates a very limited listening area and requires a larger number of speakers to give adequate coverage in the living space.



PIVOTAL ACTIONS: A full 36° of pivot allows for incredible flexibility in speaker placement.



PIVOTAL POINT: Although some in-ceiling speakers can pivot, the angle they can achieve is so small it requires the speakers to be almost directly overhead.

Director Collection

In-Ceiling Audio System

Director 100 Collection



When real dynamic bass from the ceiling is the demand, the Director 100 Collection is the obvious answer. A massive 10" woofer backs up the incredible FocalPoint* mid/tweeter assembly in our TriLinear Configuration*. The FocalPoint* also pivots to assure the sound ends up exactly where it needs to be. In addition, this 10" speaker astoundingly fits into a footprint the size of a conventional 8". Choose one of three performance levels and the Director 100 is sure to impress.

Director 80 Collection



Better bass response and greater output level in the Director 80 Collection is obvious the moment it goes active. The unique Tri-Linear Configuration*, three-way driver configuration features the FocalPoint* mid-tweeter module that pivots to aim the sound in any direction as needed. However, its most amazing feature is fitting all of this performance into a flush mount package the size of a standard 6" ceiling speaker. The Director 80 Collection is available in four performance levels and sets a new sonic standard for speakers in this diameter.



Director 60 Collection



The Director 60 Collection is both powerful and discreet. Its two-way design in four performance levels offers a solution for systems that demand sonic purity in smaller spaces. Sharing technologies with its larger siblings, the 60 Collection will surprise listeners with its detail and impact.

Director 30 Collection



Featuring the smallest footprint in the collection, Director 30 speakers offer an even distribution of sound performance with a minimal aesthetic that mimics designer recessed lighting.

Director Collection

In-Ceiling Audio System

Model: D108

Part: SCD100800



- 10" Kevlar™ woofer
- Butyl rubber X-Wave* surrounds
- FocalPoint™ 36° pivoting mid/tweeter module
- Pivoting 4" Kevlar™ midrange
- Pivoting ¾" DPSD™ silk dome tweeter
- Zip-Clip* tool-less mounting

Optional:

- Enclosure: FB10

- Adjustable woofer/tweeter levels
- Frequency Response: 25Hz-20kHz
- Impedance: 8 ohm
- Power Handling: 50-250 watts
- Sensitivity: 91dB ± 3dB
- Diameter: 11¼" (286mm)
- Cutout Diameter: 10⅜" (264mm)
- Mounting Depth: 7½" (188mm)

- Bracket: BR10

Model: D106

Part: SCD100600



- 10" glass fiber woofer
- Butyl rubber X-Wave* surrounds
- FocalPoint™ 36° pivoting mid/tweeter module
- 4" glass fiber midrange
- ¾" DPSD™ silk dome tweeter
- Zip-Clip* tool-less mounting
- Adjustable woofer/tweeter levels

Optional:

- Enclosure: FB10

- Frequency Response: 28Hz-20kHz
- Impedance: 8 ohm
- Power Handling: 50-200 watts
- Sensitivity: 91dB ± 3dB
- Diameter: 11¼" (286mm)
- Cutout Diameter: 10⅜" (264mm)
- Mounting Depth: 7½" (188mm)

- Bracket: BR10

Model: D104

Part: SCD100400



- 10" IMG woofer
- Butyl rubber X-Wave* surrounds
- FocalPoint™ 36° pivoting midtweeter module
- Pivoting 4" IMG midrange
- Pivoting ¾" aluminum dome tweeter
- Zip-Clip* tool-less mounting

Optional:

- Enclosure: FB10

- Adjustable tweeter level
- Frequency Response: 28Hz-20kHz
- Impedance: 8 ohm
- Power Handling: 50-185 watts
- Sensitivity: 90dB ± 3dB
- Diameter: 11¼" (286mm)
- Cutout Diameter: 10⅜" (264mm)
- Mounting Depth: 7½" (188mm)

- Bracket: BR10

Director Collection

In-Ceiling Speakers

16 Different Models With the Same Fit

All 6" and 8" speakers in the Director and ThinFit Collections fit into the same size hole, giving you and your customers a flexible upgrade path.

Model: D88

Part: SCD80800



- 8" Kevlar™ woofer
- Butyl rubber X-Wave* surrounds
- FocalPoint™ 36° pivoting mid/tweeter module
- Pivoting 4" Kevlar™ midrange
- Pivoting 3/4" DPSD™ silk dome tweeter
- Zip-Clip* tool-less mounting
- Optional:
 - Enclosure: FBD82X8

- Adjustable woofer/tweeter levels
- Frequency Response: 30Hz-20kHz
- Impedance: 8 ohm
- Power Handling: 50-200 watts
- Sensitivity: 90dB ± 3dB
- Diameter: 9 5/8" (244mm)
- Cutout Diameter: 8 3/4" (222mm)
- Mounting Depth: 7 3/8" (187mm)
- Bracket: BR68

Model: D86

Part: SCD80600



- 8" glass fiber woofer
- Butyl rubber X-Wave* surrounds
- FocalPoint™ 36° pivoting mid/tweeter module
- Pivoting 4" glass fiber midrange
- Pivoting 3/4" DPSD™ silk dome tweeter
- Zip-Clip* tool-less mounting
- Optional:
 - Enclosure: FBD82X8

- Adjustable woofer/tweeter levels
- Frequency Response: 34Hz-20kHz
- Impedance: 8 ohm
- Power Handling: 50-175 watts
- Sensitivity: 90dB ± 3dB
- Diameter: 9 5/8" (244mm)
- Cutout Diameter: 8 3/4" (222mm)
- Mounting Depth: 7 3/8" (187mm)
- Bracket: BR68

Director Collection

In-Ceiling Speakers

Model: D84

Part: SCD80400



- 8" IMG woofer
- Butyl rubber X-Wave* surrounds
- FocalPoint™ 36° pivoting mid/tweeter module
- Pivoting 4" IMG midrange
- Pivoting ¾" aluminum dome tweeter
- Zip-Clip* tool-less mounting

Optional:

- Enclosure: FBD82X8

- Adjustable tweeter level
- Frequency Response: 36Hz-20kHz
- Impedance: 8 ohm
- Power Handling: 50-150 watts
- Sensitivity: 89dB ± 3dB
- Diameter: 9½" (244mm)
- Cutout Diameter: 8¾" (222mm)
- Mounting Depth: 7⅝" (187mm)

- Bracket: BR68

Model: D82

Part: SCD80200



- 8" IMG woofer
- Butyl rubber X-Wave* surround
- Pivoting 1" aluminum dome tweeter
- Zip-Clip* tool-less mounting

Optional:

- Enclosure: FBD82X8
- Enclosure: FBD82X6

- Frequency Response: 38Hz-20kHz
- Impedance: 8 ohm
- Power Handling: 50-125 watts
- Sensitivity: 89dB ± 3dB
- Diameter: 9½" (244mm)
- Cutout Diameter: 8¾" (222mm)
- Mounting Depth: 5⅝" (135mm)

- Bracket: BR68

Model: D80

Part: SCD80000



- 8" poly/rubber woofer
- Butyl rubber X-Wave* surround
- Pivoting 1" silk dome tweeter
- Zip-Clip* tool-less mounting

Optional:

- Enclosure: FBD82X8
- Enclosure: FBD82X6

- Frequency Response: 38Hz-20kHz
- Impedance: 8 ohm
- Power Handling: 20-100 watts
- Sensitivity: 87dB ± 3dB
- Diameter: 9½" (244mm)
- Cutout Diameter: 8¾" (222mm)
- Mounting Depth: 3 1¼" (94mm)

- Bracket: BR68

Director Collection

In-Ceiling Speakers

Model: D68

Part: SCD60800



- Pivoting 6½" Kevlar™ woofer
- Butyl rubber X-Wave* surround
- Pivoting 1" DPSD™ silk dome tweeter
- Zip-Clip* tool-less mounting
- Adjustable bass/treble levels

Optional:

- Enclosure: FBD82X8
- Enclosure: FBD82X6

- Frequency Response: 40Hz-20kHz
- Impedance: 8 ohm
- Power Handling: 25-160 watts
- Sensitivity: 90dB ± 3dB
- Diameter: 9⅝" (244mm)
- Cutout Diameter: 8¾" (222mm)
- Mounting Depth: 5⅜" (135mm)

- Bracket: BR68

Model: D66

Part: SCD60600



- Pivoting 6½" glass fiber woofer
- Butyl rubber X-Wave* surround
- Pivoting 1" DPSD™ silk dome tweeter
- Zip-Clip* tool-less mounting
- Adjustable bass/treble levels

Optional:

- Enclosure: FBD82X8
- Enclosure: FBD82X6

- Frequency Response: 43Hz-20kHz
- Impedance: 8 ohm
- Power Handling: 25-150 watts
- Sensitivity: 90dB ± 3dB
- Diameter: 9⅝" (244mm)
- Cutout Diameter: 8¾" (222mm)
- Mounting Depth: 5⅜" (135mm)

- Bracket: BR68

Model: D64

Part: SCD60400



- Pivoting 6½" IMG woofer
- Butyl rubber X-Wave* surround
- Pivoting 1" aluminum dome tweeter
- Zip-Clip* tool-less mounting
- Adjustable tweeter level

Optional:

- Enclosure: FBD82X8
- Enclosure: FBD82X6

- Frequency Response: 45Hz-20kHz
- Impedance: 8 ohm
- Power Handling: 25-140 watts
- Sensitivity: 89dB ± 3dB
- Diameter: 9⅝" (244mm)
- Cutout Diameter: 8¾" (222mm)
- Mounting Depth: 5⅜" (135mm)

- Bracket: BR68

Director Collection

In-Ceiling Speakers

Model: D62

Part: SCD60200



- 6½" IMG woofer
- Butyl rubber X-Wave* surround
- Pivoting 1" aluminum dome tweeter
- Zip-Clip* tool-less mounting

Optional:

- Enclosure: FBD82X8
- Enclosure: FBD82X6

- Frequency Response: 48Hz-20kHz
- Impedance: 8 ohm
- Power Handling: 25-125 watts
- Sensitivity: 89dB ± 3dB
- Diameter: 9⅝" (244mm)
- Cutout Diameter: 8¾" (222mm)
- Mounting Depth: 5⅜" (135mm)

- Bracket: BR68

Model: D60

Part: SCD60000



- 6½" poly/rubber woofer
- Butyl rubber X-Wave* surround
- Pivoting 1" silk dome tweeter
- Zip-Clip* tool-less mounting

Optional:

- Enclosure: FBD82X8
- Enclosure: FBD82X6

- Frequency Response: 48Hz-20kHz
- Impedance: 8 ohm
- Power Handling: 20-100 watts
- Sensitivity: 86dB ± 3dB
- Diameter: 9⅝" (244mm)
- Cutout Diameter: 8¾" (222mm)
- Mounting Depth: 3.625" (92 mm)

- Bracket: BR68

Model: D38

Part: SCD30800



- 3" Kevlar™ woofer
- Butyl rubber X-Wave* surround
- Silk DPSD™ tweeter
- Zip-Clip* tool-less mounting
- Available with round or square bezel-less magnetic grilles

Optional:

- Enclosure: N/A

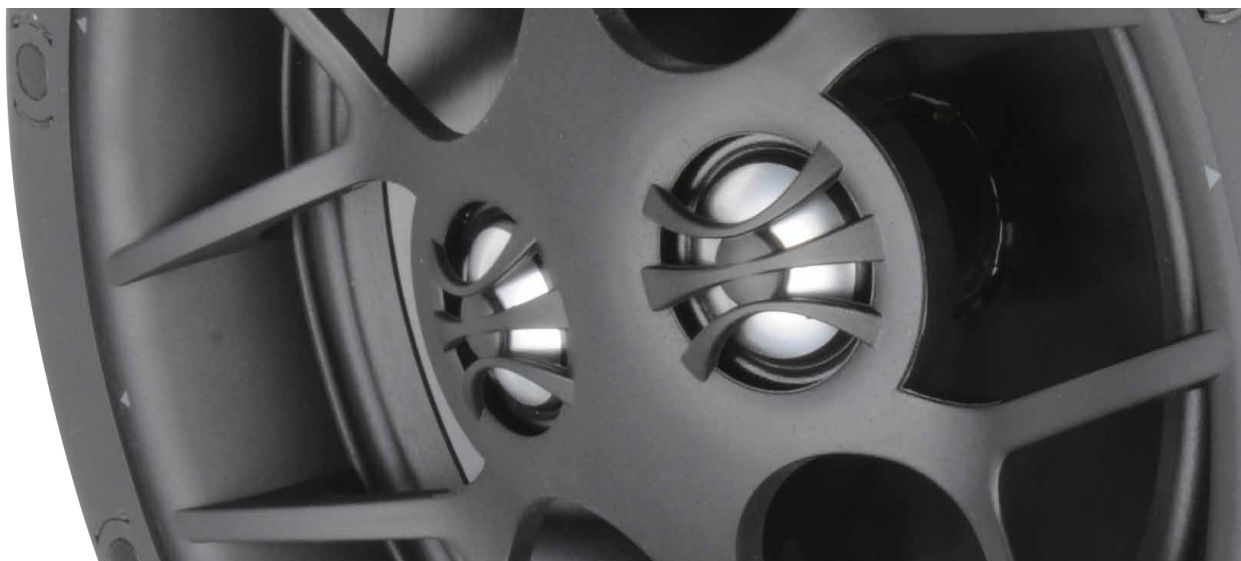
- Frequency Response: 75Hz-20kHz
- Impedance: 8 ohm
- Power Handling: 20-100 watts
- Sensitivity: 83dB ± 3dB
- Diameter: 4¼" (108mm)
- Cutout Diameter: 3½" (88mm)
- Mounting Depth: 3⅓" (86mm)

- Bracket: BR3

**Q1
2016**

Director Dual Tweeter

In-Ceiling Speakers



What about sound in those areas that don't require or even allow for a stereo pair of speakers? The Director D82 and D62 DT/SUR will reproduce both the left and right channels from a single speaker. Now bathrooms, hallways, even walk-in closets can be filled with music. Or, with the flip of a switch, the DT can be turned into a dedicated rear-channel surround speaker.



The flexibility of the Director D82 and D62 DT/SUR doesn't end with their single-speaker stereo capability. A switch on the back of the speaker can convert it to a dedicated surround speaker in a dipole configuration. This enhances dispersion enveloping the listener in rear-channel ambiance in home theater applications.



Director DT Collection

In-Ceiling Speakers

Model: D82DT/SUR

Part: SCD2T80200



- 8" DVC IMG woofer
- Butyl rubber X-Wave* surround
- 1" dual aluminum tweeters
- 2 channels from a single speaker
- Zip-Clip* tool-less mounting
- Switchable to single channel surround

Optional:

- Enclosure: FBD82X8
- Enclosure: FBD82X6

- Frequency Response: 38Hz-20kHz
- Impedance: 8 ohm
- Power Handling: 50-125 watts
- Sensitivity: 89dB ± 3dB
- Diameter: 9⁵/₈" (244mm)
- Cutout Diameter: 8³/₄" (222mm)
- Mounting Depth: 5³/₈" (135mm)

- Bracket: BR68

Model: D62DT/SUR

Part: SCD2T60200



- 6¹/₂" DVC IMG woofer
- Butyl rubber X-Wave* surround
- 1" dual aluminum tweeters
- 2 channels from a single speaker
- Zip-Clip* tool-less mounting
- Switchable to single channel surround

Optional:

- Enclosure: FBD82X8
- Enclosure: FBD82X6

- Frequency Response: 48Hz-20kHz
- Impedance: 8 ohm
- Power Handling: 25-125 watts
- Sensitivity: 89dB ± 3dB
- Diameter: 9⁵/₈" (244mm)
- Cutout Diameter: 8³/₄" (222mm)
- Mounting Depth: 5³/₈" (135mm)

- Bracket: BR68

Model: D60DT

Part: SCD60000



- 6¹/₂" poly/rubber woofer
- Butyl rubber X-Wave* surround
- 1" dual silk tweeters
- 2 channels from a single speaker
- Zip-Clip* tool-less mounting

Optional:

- Enclosure: FBD82X8
- Enclosure: FBD82X6

- Frequency Response: 48Hz-20kHz
- Impedance: 8 ± 8 ohm
- Power Handling: 20-100 watts
- Sensitivity: 86dB ± 3dB
- Diameter: 9⁵/₈" (244mm)
- Cutout Diameter: 8³/₄" (222mm)
- Mounting Depth: 3.75" (92mm)

- Bracket: BR68

Multi-Finish Collection

In-Ceiling Audio System



Aesthetic appeal is no longer a consideration against the installation of a distributed audio system. The Director Multi-Finish System is a minimal-aesthetic in-ceiling audio solution engineered to provide bass and even sound coverage with a ported subwoofer and an arrangement of in-ceiling speakers that mimic the appearance of designer recessed fixtures.

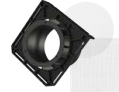


Suggested Multi-Finish Systems

In-Ceiling Audio Systems

DMF3

In-Ceiling 4.1 System



Model: D38
Part: SCD30800

Model: DSUB6
Part: DSUB6000

Model: DSUB6T30
Part: DSUB6T3000

DMF3

Combination 4.1 System



Model: D38
Part: SCD30800

Model: CSUB10R
Part: CSUB10000AR

Model: DSUB6T30
Part: DSUB6T3000

DMF6

In-Ceiling 4.1 System



Model: D68
Part: SCD60800

Model: DSUB6
Part: DSUB6000

Model: DSUB6T68
Part: DSUB6T6800

Model: A1250

Part: AMP12X5000



Model: SUBA500

Part: AMPSUB1X500



Model: BR3

Part: BRK300N



Model: DSUB6T68

Part: SUB6T6800



Model: A2150

Part: AMP02X15000



Model: SUBA150

Part: AMPSUB1X150



Model: DSUB6T30

Part: SUB6T3000



Producer Collection

In-Ceiling Speakers



Carefully crafted with an impressive price to performance ratio, the Producer Collection is our entry-level offering that is anything but entry-level in sound quality. With five in-ceiling models there are a variety of options for any number of applications. The collection includes two dual-tweeter models producing stereo from a single speaker, a perfect solution for hallways, bathrooms and walk-in closets.



Producer Collection

In-Ceiling Speakers

Model: P80

Part: SCP80100



- 8" polypropylene woofer
- Pivoting 1" silk dome tweeter
- Butyl rubber surround

Optional:

- Enclosure: FBP8

- Frequency Response: 38Hz-20kHz
- Impedance: 8 ohm
- Power Handling: 5-100 watts
- Sensitivity: 88dB ± 3dB
- Diameter: 10¾" (273mm)
- Cutout Diameter: 9¾" (247mm)
- Mounting Depth: 3⅞" (96mm)

- Bracket: BRP8

Model: P61

Part: SCP60150



- 6½" IMG woofer
- Pivoting 1" aluminum dome tweeter
- Butyl rubber surround

Optional:

- Enclosure: FBP6

- Frequency Response: 48Hz-20kHz
- Impedance: 8 ohm
- Power Handling: 5-100 watts
- Sensitivity: 86dB ± 3dB
- Diameter: 8¾" (223mm)
- Cutout Diameter: 8" (202mm)
- Mounting Depth: 3⅝" (90mm)

- Bracket: BRP6

Model: P60

Part: SCP60100



- 6½" polypropylene woofer
- Pivoting 1" silk dome tweeter
- Butyl rubber surround

Optional:

- Enclosure: FBP6

- Frequency Response: 48Hz-20kHz
- Impedance: 8 ohm
- Power Handling: 5-100 watts
- Sensitivity: 86dB ± 3dB
- Diameter: 8¾" (223mm)
- Cutout Diameter: 8" (202mm)
- Mounting Depth: 3⅝" (90mm)

- Bracket: BRP6

Producer Dual Tweeter

In-Ceiling Speakers



Stereo from a single speaker is advantageous when the system blends stereo pairs and single speakers in the same zone. There is no need to electronically change the system to a mono signal and feed these speakers independently of their stereo counterparts. Both channels are reproduced from a single location, perfect for smaller rooms or hallways.



Producer Dual Tweeter

In-Ceiling Speakers

Model: P80DT

Part: SCP2T80100



- 8" DVC polypropylene woofer
- Butyl rubber surround
- 1" dual silk dome tweeters
- 2 channels from a single speaker

Optional:

- Enclosure: FBP8

- Frequency Response: 38Hz-20kHz
- Impedance: 8 ohm
- Power Handling: 5-100 watts
- Sensitivity: 88dB ± 3dB
- Diameter: 10³/₄" (273mm)
- Cutout Diameter: 9³/₄" (247mm)
- Mounting Depth: 3⁷/₈" (96mm)

- Bracket: BRP8

Model: P60DT

Part: SCP2T60400



- 6¹/₂" DVC polypropylene woofer
- Butyl rubber surround
- 1" dual silk dome tweeters
- 2 channels from a single speaker

Optional:

- Enclosure: FBP6

- Frequency Response: 48Hz-20kHz
- Impedance: 8 ohm
- Power Handling: 5-100 watts
- Sensitivity: 86dB ± 3dB
- Diameter: 8³/₄" (223mm)
- Cutout Diameter: 8" (202mm)
- Mounting Depth: 3⁵/₈" (90mm)

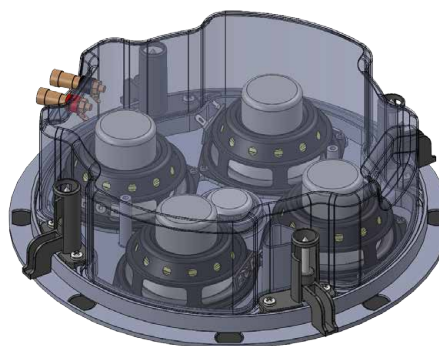
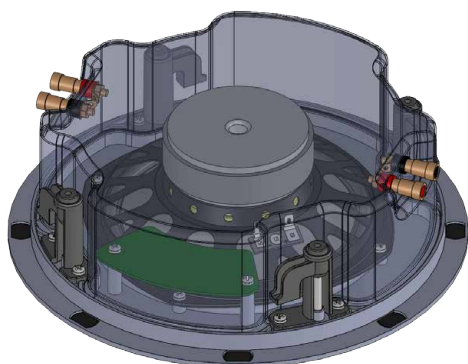
- Bracket: BRP6

ThinFit Collection

In-Ceiling Speakers



Designed as a solution for restrictive installation applications, the ThinFit Collection addresses the need for a shallow-mount speaker with a depth of only 70mm. The fully integrated acoustic enclosures protect the inner part of the speaker, improve sonic consistency, and limit the transfer of sound into adjoining rooms. All three models fit into the standard 6"/8" Director new construction bracket and include a sleek bezel-less grille.



ThinFit Collection

In-Ceiling Speakers

Model: TF36

Part: STF3600



- Dual 3½" Glass fiber woofers
- Dual 3½" Glass Fiber Mid-woofers
- Butyl rubber surrounds
- ¾" DPSD™ dome tweeter
- Integrated powder-coated steel acoustic enclosure

Optional:

- Enclosure: FBD82X6

- Frequency Response: 50Hz-20kHz
- Impedance: 8 ohm
- Power Handling: 5-110 watts
- Sensitivity: 89dB ± 3dB
- Diameter: 9⅝" (244mm)
- Cutout Diameter: 8¾" (222mm)
- Mounting Depth: 2¾" (70mm)

- Bracket: BR68

Model: TF34

Part: STF3400



- Dual 3½" IMG woofers
- Dual 3½" IMG Mid-woofers
- Butyl rubber surrounds
- ¾" aluminum dome tweeter
- Integrated powder-coated steel acoustic enclosure

Optional:

- Enclosure: FBD82X6

- Frequency Response: 55Hz-20kHz
- Impedance: 8 ohm
- Power Handling: 5-90 watts
- Sensitivity: 89dB ± 3dB
- Diameter: 9⅝" (244mm)
- Cutout Diameter: 8¾" (222mm)
- Mounting Depth: 2¾" (70mm)

- Bracket: BR68

Model: TF64DT

Part: STF2T6400



- 6½" IMG DVC woofer
- Butyl rubber X-Wave* surround
- ¾" dual aluminum dome tweeters
- Integrated powder-coated steel acoustic enclosure

Optional:

- Enclosure: FBD82X6

- Frequency Response: 45Hz-20kHz
- Impedance: 8 ohm
- Power Handling: 5-140 watts
- Sensitivity: 89dB ± 3dB
- Diameter: 9⅝" (244mm)
- Cutout Diameter: 8¾" (222mm)
- Mounting Depth: 2¾" (70mm)

- Bracket: BR68

THTR Collection

In-Wall Home Theater Speakers



Home Theater envelops us and allows anyone to escape into the greatest worlds man can imagine. From a simple 5.1 set up to the most amazing Dolby Atmos system, cinema is all about creating an immersive reality with sound detailed every bit as rich and full as real life.

At Origin Acoustics this is our love and our passion. We work rigorously to create the finest speakers in the world which can be secreted away into the walls and ceilings of the most discerning listeners and homeowners.

The Theater Collection uses larger woofers and midrange drivers than any design we have engineered before. Quad six and a half inch drivers partner with our patented DPSD™ 1" tweeter to deliver the accuracy and sonic linearity that was once only reserved for the worlds finest box speakers. We are proud of our new collection and know they will exceed the most critical expectations.



THTR Collection

In-Wall Home Theater Speakers



Model: THTR68

Part: SWML30800

- 6½" Kevlar™ woofer
- Butyl rubber surround
- Pivoting 1" DPSD™ silk dome tweeter
- Three-way crossover
- Spring-Lock* tool-less mounting
- 2 channels from a single speaker

Optional:

- Enclosure: N/A

- Frequency Response: 38Hz-20kHz
- Impedance: 8 ohm
- Power Handling: 25-200 watts
- Sensitivity: 90 ± 3dB
- Dimensions: 8.625x29.875" (220x758mm)
- Cutout Dimensions: 7.875x29" (198x736mm)
- Mounting Depth: 3¾" (95mm)

- Bracket: BRL30



Model: THTR66

Part: SWML30600

- 6½" glass fiber woofer
- Butyl rubber surround
- Pivoting 1" DPSD™ silk dome tweeter
- Three-way crossover
- Spring-Lock* tool-less mounting
- 2 channels from a single speaker

Optional:

- Enclosure: N/A

- Frequency Response: 40Hz-20kHz
- Impedance: 8 ohm
- Power Handling: 25-200 watts
- Sensitivity: 90 ± 3dB
- Dimensions: 8.625x29.875" (220x758mm)
- Cutout Dimensions: 7.875x29" (198x736mm)
- Mounting Depth: 3¾" (95mm)

- Bracket: BRL30

LCR 60 Collection

In-Wall Speakers



Delivering impact and clarity, the Composer LCR60 Collection has the right combination of size and performance to create an immersive sonic experience in any room. Whether being used as the front and rear channels of a home theater or as a stereo pair for a dedicated music system, these speakers will reproduce every detail with precision while remaining hidden in the wall.



LCR 60 Collection

In-Wall Speakers

Model: LCR68

Part: SWML14800



- Dual 6½" Kevlar™ woofers
- Butyl rubber surrounds
- Pivoting 1" pivoting DPSD™ silk dome tweeter
- Adjustable woofer/tweeter levels
- Spring-Lock* tool-less mounting
- Fits between 16" on-center studs

Optional:

- Enclosure: FB15S

- Frequency Response: 53Hz-20kHz
- Impedance: 8 ohm
- Power Handling: 25-175 watts
- Sensitivity: 90dB ± 3dB
- Dimensions: 7½ x 15¼" (190 x 386mm)
- Cutout Dimensions: 6⅝ x 14⅜" (168 x 364mm)
- Mounting Depth: 3¾" (95mm)
- Bracket: BRL15

Model: LCR66

Part: SWML14600



- Dual 6½" glass fiber woofers
- Butyl rubber surrounds
- Pivoting 1" pivoting DPSD™ silk dome tweeter
- Adjustable woofer/tweeter levels
- Spring-Lock* tool-less mounting
- Fits between 16" on-center studs

Optional:

- Enclosure: FB15S

- Frequency Response: 55Hz-20kHz
- Impedance: 8 ohm
- Power Handling: 25-150 watts
- Sensitivity: 90dB ± 3dB
- Dimensions: 7½ x 15¼" (190 x 386mm)
- Cutout Dimensions: 6⅝ x 14⅜" (168 x 364mm)
- Mounting Depth: 3¾" (95mm)
- Bracket: BRL15

Model: LCR64

Part: SWML14400



- Dual 6½" IMG woofer
- Butyl rubber X-Wave™ surrounds
- Pivoting 1" pivoting aluminum dome tweeter
- Spring-Lock* tool-less mounting
- Adjustable tweeter level
- Fits between 16" on-center studs

Optional:

- Enclosure: FBD82X6

- Frequency Response: 55Hz-20kHz
- Impedance: 8 ohm
- Power Handling: 25-150 watts
- Sensitivity: 90dB ± 3dB
- Dimensions: 7½ x 15¼" (190 x 386mm)
- Cutout Dimensions: 6⅝ x 14⅜" (168 x 364mm)
- Mounting Depth: 3¾" (95mm)
- Bracket: BR68

*Patent Pending

LCR 30 Collection

In-Wall Speakers



When space becomes a major consideration, finding a speaker that is both diminutive yet still packs a punch is not easy. Fortunately the Composer LCR30 Collection fits the bill. It borrows from the technology of its larger siblings and delivers remarkable sound quality in a package that is downright tiny. But don't let its size mislead you. This is real sound for installations that require the smallest footprint possible.



LCR 30 Collection

In-Wall Speakers

Model: LCR38

Part: SWML10800



- Dual 3½" Kevlar™ woofers
- Butyl rubber X-Wave* surrounds
- Pivoting 1" DPSD™ silk dome tweeter
- Adjustable woofer/tweeter levels
- Spring-Lock™ tool-less mounting

Optional:

- Enclosure: FB10S

- Frequency Response: 70Hz-20kHz
- Impedance: 8 ohm
- Power Handling: 25-80 watts
- Sensitivity: 90dB ± 3dB
- Dimensions: 5¼ x 10¼" (134 x 262mm)
- Cutout Dimensions: 4¾ x 9½" (122 x 240mm)
- Mounting Depth: 3¾" (95mm)

- Bracket: BRL10

Model: LCR36

Part: SWML10600



- Dual 3½" glass fiber woofers
- Butyl rubber X-Wave* surrounds
- Pivoting 1" DPSD™ silk dome tweeter
- Adjustable woofer/tweeter levels
- Spring-Lock™ tool-less mounting

Optional:

- Enclosure: FB10S

- Frequency Response: 70Hz-20kHz
- Impedance: 8 ohm
- Power Handling: 25-80 watts
- Sensitivity: 90dB ± 3dB
- Dimensions: 5¼ x 10¼" (134 x 262mm)
- Cutout Dimensions: 4¾ x 9½" (122 x 240mm)
- Mounting Depth: 3¾" (95mm)

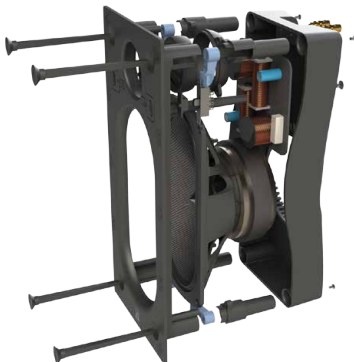
- Bracket: BRL30

C60 Collection

In-Wall Speakers



When the paradigm shift from cabinet speakers to in-wall speakers took place decades ago, this was the size for which everyone clamored. It was small enough to be discreet while being large enough to produce both full frequency and enough sound pressure to fill a room. The C60 Collection dramatically renews this tradition with advanced driver technology and a very attractive form factor. It is perfect in the bedroom or the bathroom and is great for both music and theater sound.



C60 Collection

In-Wall Speakers



Model: C68

Part: SWM12800

- 4x8" Kevlar™ woofer
- Butyl rubber X-Wave* surround
- Pivoting 1" DPSD™ silk dome tweeter
- Adjustable woofer/tweeter levels
- Spring-Lock™ tool-less mounting
- Frequency Response: 40Hz-20kHz

Optional:

- Enclosure: FB12S

- Impedance: 8 ohm
- Power Handling: 25-140 watts
- Sensitivity: 89dB ± 3dB
- Dimensions: 5½ x 11¾" (140 x 300mm)
- Cutout Dimensions: 4⅝" (118 x 278mm)
- Mounting Depth: 3¾" (95mm)

- Bracket: BRL12



Model: C66

Part: SWM12600

- 4x8" glass fiber woofer
- Butyl rubber X-Wave* surround
- Pivoting 1" DPSD™ silk dome tweeter
- Adjustable woofer/tweeter levels
- Spring-Lock™ tool-less mounting
- Frequency Response: 43Hz-20kHz

Optional:

- Enclosure: FB12S

- Impedance: 8 ohm
- Power Handling: 25-125 watts
- Sensitivity: 89dB ± 3dB
- Dimensions: 5½ x 11¾" (140 x 300mm)
- Cutout Dimensions: 4⅝" (118 x 278mm)
- Mounting Depth: 3¾" (95mm)

- Bracket: BRL12



Model: C64

Part: SWM12400

- 4x8" IMG woofer
- Butyl rubber X-Wave* surround
- Pivoting 1" aluminum dome tweeter
- Spring-Lock™ tool-less mounting
- Adjustable tweeter levels
- Frequency Response: 45Hz-20kHz

Optional:

- Enclosure: FB12S

- Impedance: 8 ohm
- Power Handling: 25-110 watts
- Sensitivity: 89dB ± 3dB
- Dimensions: 5½ x 11¾" (140 x 300mm)
- Cutout Dimensions: 4⅝" (118 x 278mm)
- Mounting Depth: 3¾" (95mm)

- Bracket: BRL12



Model: C62

Part: SWM12200

- 4x8" IMG woofer
- Butyl rubber X-Wave* surround
- Pivoting 1" aluminum dome tweeter
- Spring-Lock™ tool-less mounting
- Frequency Response: 45Hz-20kHz

Optional:

- Enclosure: FB12S

- Impedance: 8 ohm
- Power Handling: 25-110 watts
- Sensitivity: 89dB ± 3dB
- Dimensions: 5½ x 11¾" (140 x 300mm)
- Cutout Dimensions: 4⅝" (118 x 278mm)
- Mounting Depth: 3¾" (95mm)

- Bracket: BRL12

Composer Subwoofers

In-Wall Subwoofers



No audio system is complete without the presence of deep powerful bass. Since inventing the in-wall subwoofer back in the 1980's, the Origin Acoustics team has learned many tricks of the trade. The Composer In-Wall subwoofers are a true culmination of over 30 years in engineering the highest performing subs within the lowest profile enclosures.

The aluminum build of our in-wall subwoofers provides tremendous acoustical enhancements. By using dense pure aluminum cabinets instead of MDF we're able to increase the air volume driving the cone's powerful pulse. The extremely low resonance frequency and efficient dissipation of heat make our aluminum subwoofers more than capable of adding a deep dose of bass without shaking the walls.



Composer Subwoofers

In-Wall Subwoofers

Model: CSUB10N

Part: CSUB1000AN



- 10" Aluminum retrofit design
- Rubber sound dampening
- Dual Voice Coil 10"
- Must be used with enclosure (CSUB10NCE)
- Must be used with Origin SUBA150 or SUBA500 DSP Amps (sold separately)

**Q1
2016**

- Frequency Response: 30Hz-250Hz
- Power Handling: 250 watts
- Dimensions: 3 $\frac{3}{8}$ x 13 x 44 $\frac{1}{16}$ " (88 x 330 x 1120mm)
- Cutout Diameter: 10 $\frac{1}{2}$ " (268mm)

Model: CSUB10NCE

Part: CSUB10000NCE



- Aluminum New Construction Slide enclosure
- Must be used with subwoofer (CSUB10N)
- Dimensions: 44 x 13 x 3 $\frac{1}{8}$ " (1120 x 330 x 88mm)

**Q1
2016**

Model: CSUB10R

Part: CSUB10000AR



- 10" Aluminum retrofit design
- Rubber sound dampening
- Aluminum Slide enclosure with CabinSpace™ Cap
- Controls: Level, Phase, Crossover
- Dual Voice Coil
- Must be used with Origin SUBA150 or SUBA500 DSP Amps (sold separately)

**Q1
2016**

- Frequency Response: 33Hz-250Hz
- Power Handling: 250 watts
- Dimensions: 3 $\frac{3}{8}$ x 13 x 16 $\frac{9}{16}$ " (88 x 330 x 430mm)
- Cutout Diameter: 13 x 16 $\frac{9}{16}$ " (330 x 430mm)

Model: SUBA500

Part: AMPSUB1X500

- 500 Watt Subwoofer Amplifier w/ DSP Presets



Model: SUBA150

Part: AMPSUB1X150

- 150 Watt Subwoofer Amplifier



Director Subwoofers

In-Ceiling Subwoofers



Director Dual-Woofer 6" BandPass In-Ceiling Subwoofer rounds out the performance with tight bass and multiple port options to match either smaller recessed lighting or 6" and 8" speakers, while the Director 8" Band Pass In-Ceiling Subwoofer pairs with any Director speakers to create a perfect in-ceiling distributed subwoofer system. Seamlessly blending in with interior designs, this system adds an audible layer of Feng Shui.



Director Subwoofers

In-Ceiling Subwoofers

Model: DSUB6

Part: DSUB6000



- Dual 6" Aluminum woofers
- Band-pass design
- Bezel-less magnetic square and round grille options match Director 3" or Director 6" & 8" speakers
- Must be used with Origin SUBA150 or SUBA500 DSP Amps (sold separately)

**Q1
2016**

- Frequency Response: 33Hz- 140kHz
- Impedance: 8 ohm
- Power Handling: 100 Watt Max
- Sensitivity: 87dB \pm 3dB
- Diameter: 4¼" (108mm) or 8⅔" (220mm)
- Cutout Diameter: 3½" (88mm) or 8¾" (222mm)
- Mounting Depth: 11¼" (300mm)

**Q1
2016**



Model: DSUB6T30

Part: DSUB6T3000

- Finish trim for DSUB6 includes Connector attachment to fit connector already in ceiling, and matching D30 Grille (both round/square)

**Q1
2016**



Model: DSUB6T68

Part: DSUB6T6800

- Finish trim for DSUB6 includes Connector attachment to fit connector already in ceiling, and matching D6/8 Grille (both round/square)

Model: SUBA500

Part: AMPSUB1X500

- 500 Watt Subwoofer Amplifier w/ DSP Presets



Model: SUBA150

Part: AMPSUB1X150

- 150 Watt Subwoofer Amplifier



Bassic Subwoofers

Subwoofers



Bass frequencies are the foundation of any audio performance. They fill the room with impact and drive emotion in every listening session. The Bassic Subwoofers deliver this dramatic and dynamic portion of the sound experience through the matching of rugged and powerful amplification with high-performance drivers. The Bassic Subwoofers are available in four sizes with 8-inch, 10-inch and 12-inch drivers powered by 100, 150 and 250 watts of digital amplification.



Bassic Subwoofers

Subwoofers

Model: SUB12

Part: SBXSUB1200800



- 12" Aluminum woofer
- Front mounted controls
- Inputs: L/R Line level, LFE, High level speaker
- Outputs: High level speaker output
- Controls: Level, Phase, Crossover
- Power Rating: Class D 250 Watts
- WxHxD: 18" x 16" x 18½"
- High gloss finish

Model: SUB10

Part: SBXSUB100600



- 10" Aluminum woofer
- Front mounted controls
- Inputs: L/R Line level, LFE, High level speaker
- Outputs: High level speaker output
- Controls: Level, Phase, Crossover
- Power Rating: Class D 150 Watts
- WxHxD: 16" x 14" x 16"
- High gloss finish

Model: SUB8

Part: SBXSUB80400



- 8" Aluminum woofer
- Inputs: L/R Line level, LFE, High level speaker
- Outputs: High level speaker output
- Controls: Level, Phase, Crossover
- Power Rating: Class D 100 Watts
- WxHxD: 12" x 12" x 12"
- High gloss finish

Model: SUBV10

Part: SBXSUBV100600



- 10" Aluminum woofer
- Inputs: L/R Line level, LFE
- USB 5.V for charging wireless adapters
- Controls: Level, Phase, Crossover
- Power Rating: Class D 150 Watts
- WxHxD: 13" x 13" x 13"
- Black ash vinyl finish

Landscape Design Services

Outdoor Audio System



We understand that designing a perfect landscape system to WOW your customers can be challenging and time-consuming. Origin Acoustics has committed top talent from their team to provide you and your client with amazing turn-key landscape system designs, complete with detailed illustrations and instructions for installation as well as a detailed proposal with system pricing. In utilizing this service, we've found that our dealers are able to close more jobs and generate 2 to 3 times more revenue.

Step 1

Log in to the Origin website and fill out the "Design Services Questionnaire" found under Dealer Resources. Submit the completed form via email to sales@originacoustics.com. This will provide our team with basic information regarding your client's expectations to get us started.

Step 2

Allow us to quickly prepare a customized speaker layout diagram using your client's landscape, a product proposal, and a powerpoint presentation with system specifications and easy to read installation instructions.

Step 3

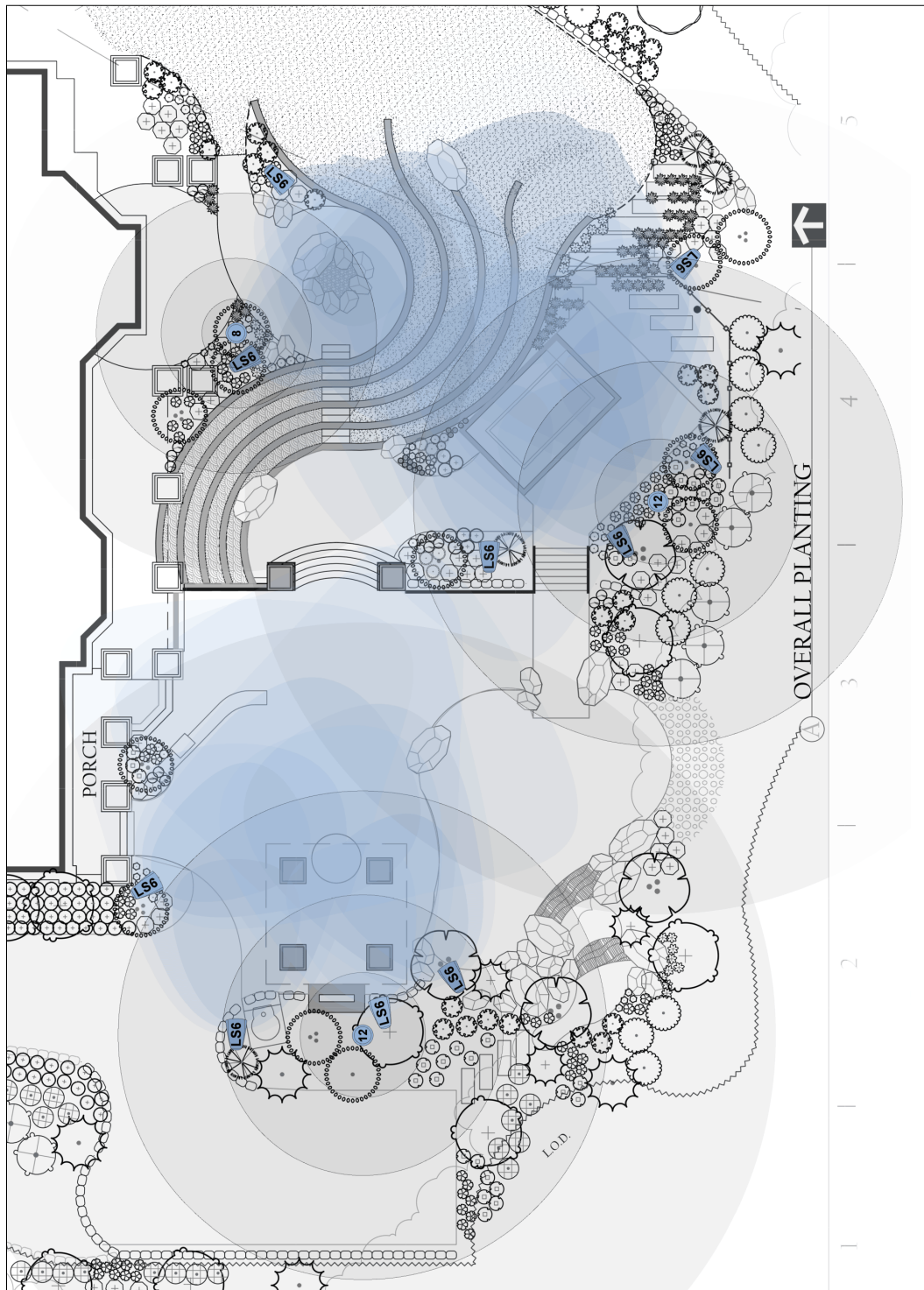
Present your client with the exclusive materials provided by the Origin Design Services team and close the deal on providing them with the ultimate outdoor listening experience, custom-tailored to their needs.

To learn more about this awesome program, contact our office at 844.674.4461

Landscape Design Services

Outdoor Audio System

Custom Tailored Landscape Audio Systems



Seasons Landscape Collection

Landscape Audio System



Filling your outdoor environment with quality music that appears to come from nowhere is now a very real expectation. The Landscape Collection includes two models of speakers in enclosures that mimic lighting fixtures. To create an even more dramatic presence, the Collection includes high-performance subwoofers that are buried in the ground and completely fill out the bottom end. Hidden away in flower beds and planters or placed around the pool or other water features, these speakers can fill the entire yard with a sound that is sure to enhance every outdoor event from a pool party to a wedding reception.



Seasons Landscape Collection

Landscape Satellite Speakers

Model: LS64

Part: OLS6600



- 6" polypropylene woofer
- 1" titanium dome tweeter
- Passive radiator
- PolyComposite, weather resistant enclosure
- Switchable 8-ohm and multiple 70v taps
- Frequency Response: 60Hz-20kHz \pm 3dB

Mounts Sold Separately

Model: LS44

Part: OLS4400



- 4" polypropylene woofer
- .75" titanium dome tweeter
- PolyComposite, weather resistant enclosure
- Switchable 8-ohm and multiple 70v taps
- Frequency Response: 80Hz-20kHz \pm 3dB

Mounts Sold Separately

Seasons Landscape Collection

Landscape Subwoofers



Model: OSUB12

Part: OSUB12000

- 12" polypropylene woofer
- PolyComposite, weather resistant enclosure
- 70v
- In-ground installation



Model: OSUB10

Part: OSUB10000

- 10" polypropylene woofer
- PolyComposite, weather resistant enclosure
- 70v
- In-ground installation



Model: OSUB8

Part: OSUB8000

- 8" polypropylene woofer
- PolyComposite, weather resistant enclosure
- Switchable 8-ohm and 70v
- In-ground installation

Suggested Landscape Systems

Landscape Audio Systems



Satellites

- LS64 (8 each)

Subwoofers

- OSUB12 (2 each)

Amplifier

- CDi1000 (OA DSP)

Mounts Sold Separately



Satellites

- LS64 (8 each)

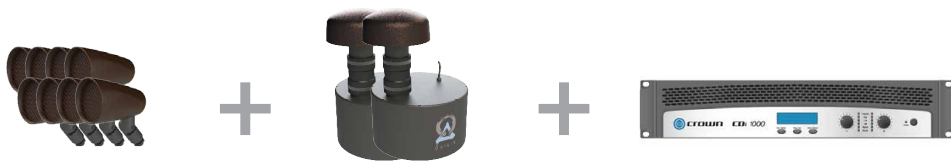
Subwoofers

- OSUB10 (2 each)

Amplifier

- CDi1000 (OA DSP)

Mounts Sold Separately



Satellites

- LS44 (8 each)

Subwoofers

- OSUB10 (2 each)

Amplifier

- CDi1000 (OA DSP)

Mounts Sold Separately



Satellites

- LS44 (8 each)

Subwoofers

- OSUB8 (2 each)

Amplifier

- CDi1000 (OA DSP)

Mounts Sold Separately

Seasons Landscape Mounts

Landscape Accessories

Various mounting options for the Landscape speakers create a substantial level of flexibility when designing an outdoor system. The large and small spikes can be driven into the ground in the lawn, flowerbeds and planters where the speakers can be discreetly hidden by plants and shrubs. The Tree Mount allows the speakers to be mounted above the ground on tree limbs or trunks. The surface Mount can be secured to any flat surface such as decks, pilasters, hand rails, the sides of buildings or under the eaves. The direction of the speakers can then be adjusted to focus the sound at the listening area.



Model: LSTM
Part: OLATM1000

- Tree Mount



Model: LSLS
Part: OLALS1000

- Large Spike



Model: LSFM
Part: OLAFM1000

- Surface Mount



Model: LSSS
Part: OLASS1000

- Small Spike

Seasons Landscape Amplifiers

Landscape Amplifiers

Seasons Amplifiers

A dedicated high-current amplifier delivering earth-shaking power drives this enclosure. This amp resides with the source components remotely positioned so as to protect them from the elements.

Crown CDi Amplifiers

The Crown CDi amplifiers are perfect for driving any of the Landscape Collection Satellites and Subwoofers. Operating in either 8 ohm or 70v mode, both amplifiers delivers incredible and reliable power with onboard DSP.



Model: CDi1000
Crown by Harman

- Accurate, uncolored sound with very low distortion for the best in music and voice reproduction
- Extremely versatile; rated for 2, 4, 8 ohm loads and 70V/100V and 140V outputs
- Advanced protection circuitry guards against: shorted outputs, open circuits, DC, mismatched loads, general overheating, high-frequency over-loads and internal faults
- Intuitive front-panel LCD screen for quick, easy configuration
- Switch-mode universal power supply



Model: CDi2000
Crown by Harman

- Onboard digital signal processing includes cross-overs, EQ filters, delay, and output limiting
- 2 Channels
- Rated Power Output (per Channel @ 4 ohms):
 - CDi1000:** 500 Watts per channel
 - CDi2000:** 800 Watts per channel
- Signal to Noise Ratio (below rated 1kHz power at 8 ohms) : 100 dB (A weighted)
- Total Harmonic Distortion: 0.5%
- Dimension: (HxWxD) 3½" x 19" x 12.25"

Seasons Outdoor Collection

Outdoor Speakers



Taking entertainment outside is a balance of audible accuracy, dispersion and power. The Seasons Outdoor Collection utilizes a unique driver configuration in a triangular cabinet. The 60 Collection models feature active woofers and tweeters firing forward and dual passive radiators firing off the back two sides. This means substantial bass and greater achievable volume levels to fill the yard, deck or pool area with impressive sound. The collection is available in eight models including two that deliver both stereo channels from a single enclosure.



Seasons Outdoor Collection

Outdoor Speakers



Model:OS66B (Black)

Part: OCS6600B

Model:OS66W (White)

Part: OCS6600W

- 4x8" glass fiber woofer
- Butyl rubber X-Wave™ surround
- 4x8" dual passive radiators
- Aluminum dome tweeter
- Adjustable woofer/tweeter levels
- WxHxD: 7" x 13" x 7"



Model:OS64DTB (Black)

Part: OCS64DTB

Model:OS64DTW (White)

Part: OCS64DTW

- 4x8" IMG woofer
- Butyl rubber X-Wave™ surround
- 4x8" dual passive radiators
- Dual aluminum dome tweeters
- Adjustable tweeter level
- WxHxD: 7" x 13" x 7"

Seasons Outdoor Collection

Outdoor Speakers



Model:OS64B (Black)

Part: OCS6400B

Model:OS64W (White)

Part: OCS6400W

- 4x8" IMG woofer
- Butyl rubber X-Wave™ surround
- 4x8" dual passive radiators
- Aluminum dome tweeter
- Adjustable tweeter level
- WxHxD: 7" x 13" x 7"



Model:OS56B (Black)

Part: OCS5600B

Model:OS56W (White)

Part: OCS5600W

- 5.25" glass fiber woofer
- Butyl rubber X-Wave™ surround
- Dual passive radiators
- Aluminum dome tweeter
- Adjustable woofer/tweeter levels
- WxHxD: 7" x 10½" x 7"

Seasons Outdoor Collection

Outdoor Speakers



Model:OS54DTB (Black)

Part: OCS54DTB

Model:OS54DTW (White)

Part: OCS54DTW

- 5.25" IMG woofer
- Butyl rubber X-Wave™ surround
- Dual aluminum dome tweeters
- Adjustable tweeter level
- WxHxD: 7" x 10½" x 7"



Model:OS54B (Black)

Part: OCS5400B

Model:OS54W (White)

Part: OCS5400W

- 5.25" IMG woofer
- Butyl rubber X-Wave™ surround
- Aluminum dome tweeter
- Adjustable tweeter level
- WxHxD: 7" x 10½" x 7"

Electronics

Electronics



Great sound and durability are the hallmarks of Origin amplifiers. When designing a system, regardless of its size or complexity, amplification is a critical tool that needs to perform all the time, every time. These amplifiers resoundingly answer the call.

Our Class-D switching type amplifiers have incredible efficiency, above 90%, as higher power is demanded. This means substantially less heat is produced even though the amplifier is able to produce substantial power. This also means a reduction in size as smaller heat sinks are required and the electronic circuitry can be more compact and reside in a smaller chassis.



Electronics

Amplifiers

An amplifier should be transparent, it should literally be just wire with gain. At Origin we pride ourselves in offering no-compromise amplifiers to drive our loudspeakers. Whether you require a stereo or multi-channel version, our amplifiers feature high-efficiency, Class-D power that is built to last and will reproduce every nuance of every recording.

Model: A1250

Part: AMP12X5000



- 12 independent channels
- Global and individual inputs
- 50 watts of class-D power per channel
- Bridgeable outputs
- Signal sensing turn-on
- 12-volt trigger
- Thermal protection
- Short circuit protection
- 2U rack mountable
- Mounting plates included

Model: A2150

Part: AMP02X15000



- Two Channel, Stereo Amplifier
- 150 watts of Class D power per channel
- Bridgeable outputs
- Signal sensing turn-on
- 12-volt trigger
- Thermal protection
- Short circuit protection
- 2U rack mountable
- Mounting plates included

Electronics

Subwoofer Amplifiers

Model: SUBA500

Part: AMPSUB1X500



- Single channel, subwoofer amplifier
- 500 watts of class D power
- User adjustable presets
- Remote Control
- 10-band equalization
- Front-mounted volume control
- Signal sensing auto on/o
- Low-pass crossover
- Compact 1U design

Model: SUBA150

Part: AMPSUB1X250



- Single channel, subwoofer amplifier
- 150 watts of class D power
- Adjustable low-pass crossover
- Front mounted volume control
- Signal sensing auto on/o
- Subsonic Filter
- Compact 1U design

Electronics

Speaker Selectors

Model: DS6VC

Part: AC6VC10000



- Individually switches on/off of up to 6 pairs of speakers
- Allows for individual adjustment of volume levels of up to 6 pairs of speakers
- Connect and safely control multiple speaker pairs with one amplifier.
- Automatic impedance protection circuitry engages without the need for user involvement.
- Individual room on/off pushbuttons.
- Heavy-duty screw-type connectors, capable of accepting up to 12 AWG wire, provide positive hookup to input and output wires.

Model: SL6

Part: AC6SEL1000



- Individually switches on/off of up to 6 pairs of speakers
- Connect and safely control multiple speaker pairs with one amplifier.
- Automatic impedance protection circuitry engages without the need for user involvement.
- Individual room on/off pushbuttons.
- Heavy-duty screw-type connectors, capable of accepting up to 12 AWG wire, provide positive hookup to input and output wires.

Model: SL4

Part: AC4SEL1000



- Individually switches on/off of up to 4 pairs of speakers
- Connect and safely control multiple speaker pairs with one amplifier.
- Automatic impedance protection circuitry engages without the need for user involvement.
- Individual room on/off pushbuttons.
- Heavy-duty screw-type connectors, capable of accepting up to 12 AWG wire, provide positive hookup to input and output wires.

Electronics

Volume Controls



Model: OV100

Part: ACOVC1000

- Impedance matching Rotary Weatherproof outdoor volume control
- 70-100 watts
- Only available in gray



Model: VS100

Part: ACVCO1000

- Impedance matching Slider volume control
- 70-100 watts
- Includes white, almond and bone faceplates



Model: VI100

Part: ACVC100000

- Impedance matching Rotary volume control
- 70-100 watts
- Includes white, almond and bone faceplates



Model: VI50

Part: ACVC50000

- Impedance matching Rotary volume control
- 30-50 watts
- Includes white, almond and bone faceplates



Model: V70V

Part: AC70VC10000

- Rotary 70 Volt Volume Control
- Includes white, almond and bone faceplates



Model: ADC8

Part: ADC8000

- Connects up to 8 pairs of speakers to a single amplifier
- Standard Phoenix connectors
- Compact design
- Each speaker pair connection requires impedance matching volume control

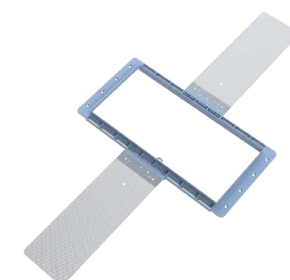
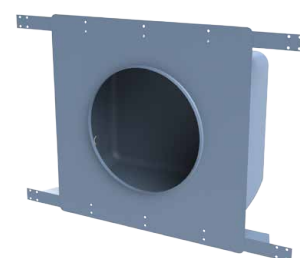
Installation Accessories

Installation Accessories



Origin Acoustics loudspeakers are designed to be mounted in any room in any home. Typically the stud bay or ceiling construction is all that is necessary to mount the speakers and provide the proper acoustic platform. However sometimes the installation may require specific enclosures to assure proper air volume behind the speaker or to limit sound transference into an adjoining room. Sometimes a state or local ordinance may require a metal enclosure in certain buildings. Origin Metal Sound Enclosures were designed to meet or exceed One-hour Fire Rating requirements and contain fire, gas, smoke and heat within the enclosure for up to one hour.

New construction brackets make the final install very fast and efficient. Brackets for all Origin in-wall and in-ceiling speakers are available. Make sure to confirm the model number correctly correlates to the brackets you are ordering.



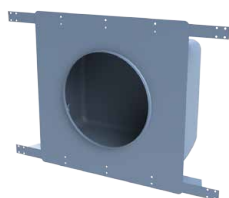
*Patent Pending

Installation Accessories

Sound Enclosures

Model: FB10

Part: FBXD10000R



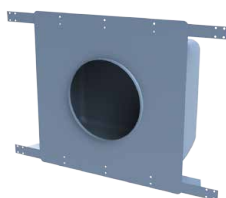
10½ x 14½ x 7½"
(265 x 356 x 188mm) (HxWxD)

Back box for:

- D108
- D106
- D104

Model: FBD82X8

Part: FBXC6800R



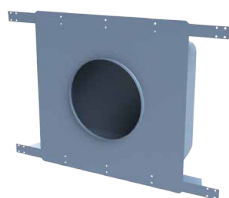
10 x 14 x 7½"
(254 x 356 x 188mm) (HxWxD)

Back box (2x8 construction) for:

- D80 Collection (all)
- D60 Collection (all)
- ThinFit Collection (all)

Model: FBD82X6

Part: FBXD68000R



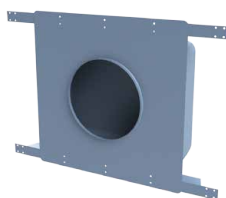
10½ x 14½ x 5¾"
(254 x 356 x 146mm) (HxWxD)

Back box (2x6 construction) for:

- D82
- D82DT/SUR
- D60 Collection (all)
- ThinFit Collection (all)

Model: FBP8

Part: FBPX8010R



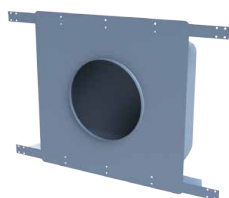
10 x 14 x 7½"
(254 x 356 x 188mm) (HxWxD)

Back box for:

- P80
- P80DT

Model: FBP6

Part: FBPX6010R



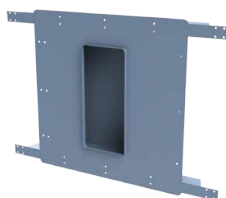
10½ x 14½ x 5¾"
(254 x 356 x 146mm) (HxWxD)

Back box for:

- P60
- P60DT
- P61

Model: FB12S

Part: FBXC1200



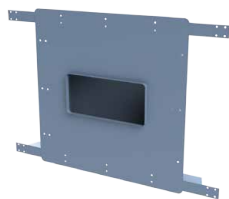
14 x 14 x 3½"
(356 x 356 x 89mm) (HxWxD)

Back box for:

- C68
- C66
- C64

Model: FB10S

Part: FBXL1000



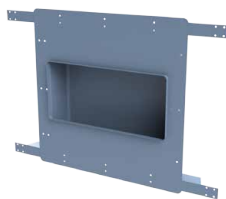
14 x 14 x 3½"
(356 x 356 x 89mm) (HxWxD)

Back box for:

- LCR38
- LCR36

Model: FB15S

Part: FBXL1500



14 x 14 x 3½"
(356 x 356 x 89mm) (HxWxD)

Back box for:

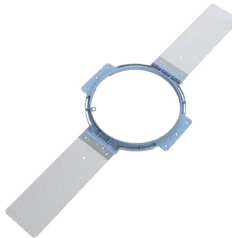
- LCR68
- LCR66
- LCR64

Installation Accessories

New Construction Brackets

Model: BR10

Part: BRK1000N

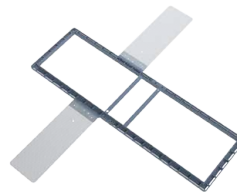


Bracket for:

- D108
- D106
- D104

Model: BRL30

Part: BRKL3000N

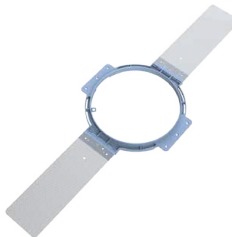


Bracket for:

- THTR68
- THTR66

Model: BR68

Part: BRK800N

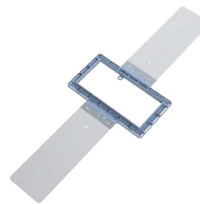


Bracket for:

- D80 Collection (all)
- D60 Collection (all)
- ThinFit Collection (all)

Model: BRL15

Part: BRKL1500

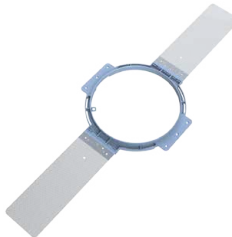


Bracket for:

- LCR68
- LCR66
- LCR64

Model: BR3

Part: BRK300N



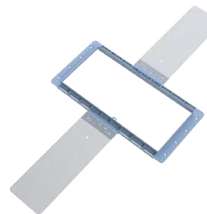
Bracket for:

- D30 Collection (all)

**Q1
2016**

Model: BRL10

Part: BRKL1000N

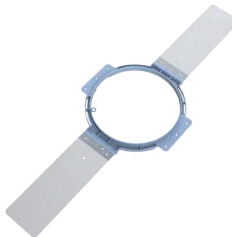


Bracket for:

- LCR38
- LCR36

Model: BRP8

Part: BRK810N

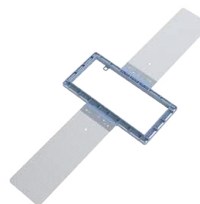


Bracket for:

- P80
- P80DT

Model: BRL12

Part: BRKL1200N

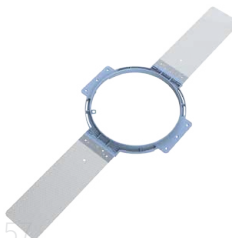


Bracket for:

- C68
- C66
- C64

Model: BRP6

Part: BRK610N



Bracket for:

- P60
- P60DT
- P61

Installation Accessories

Paint Shields

Installing the speaker in advance of painting the drywall is a common practice. In order to protect the speaker's internal components the reusable paint shields are an excellent investment. They are made of injection molded plastic with metal on the edges that are secured by the magnets on the mounting rings. Simply place them over the speaker and whether the paint is sprayed or rolled it will allow it to flow up to the very edge of the speakers. The shields are then removed and replaced with the perforated grilles creating a discreet finished appearance.

Model: DPS10

Part: MISD10000



Paint Shield for:

- D108
- D106
- D104

Model: DPS68

Part: MISD6800



Paint Shield for:

- D80 Collection (all)
- D60 Collection (all)
- ThinFit Collection (all)

Model: PPS8

Part: MISP8000



Paint Shield for:

- P80
- P80DT

Model: PPS6

Part: MISP6000



Paint Shield for:

- P60
- P60DT
- P61

Model: CPS6

Part: MISC1200



Paint Shield for:

- C68
- C66
- C64

Model: LPS6

Part: MISC1500



Paint Shield for:

- LCR68
- LCR66
- LCR64

Model: LPS3

Part: MISC3600



Paint Shield for:

- LCR68
- LCR66

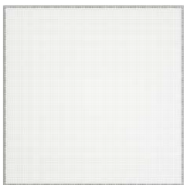
Installation Accessories

Grilles

Designed to give the Origin Acoustics' Producer and Director Collections that square, precise modern look, these replacement grilles fit onto and in the exact location of the standard round grilles.

Model: SQ10

Part: GR10000S

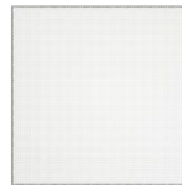


Square Grille for:

- D108
- D106
- D104

Model: SQ8P

Part: GRP810S

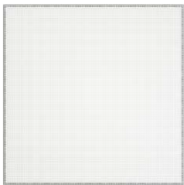


Square Grille for:

- P80
- P80DT

Model: SQ68

Part: GRD68000S

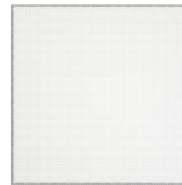


Square Grille for:

- D80 Collection (all)
- D60 Collection (all)
- ThinFit Collection (all)

Model: SQ6P

Part: GRP610S



Square Grille for:

- P60
- P60DT
- P61

Model: BZ10

Part: MISDZ1000



Bayonett Ring w/ Rail and Zip-Clip for:

- D100 Collection (all)

Model: BZ68

Part: MISDZ8600



Bayonett Ring w/ Rail and Zip-Clip for:

- D80 Collection (all)
- D60 Collection (all)

