

PROTECH CASE ZEBRA PS30

2
YEARS
WARRANTY

Increase the lifetime of your PS30 device by protecting it with the Mobilis rugged boot!

The PS30 Zebra is designed for intensive use in environments where drops are frequent. The Mobilis Protech case offers unbeatable protection :

Unbreakable : withstands 1000 drops from 1.20m/4ft.

Lightweight : thin, compact and discreet

Antimicrobial treatment : for impeccable hygiene

Eco-friendly : 30% recycled materials, 100% recyclable

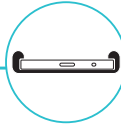
Made in France : like all our PROTECH cases



AFNOR Cert. 107672

ADVANCED RAISED EDGES

Design to protect the screen and camera lens **in the event of falls**



AIRCELL SYSTEM

4 air pockets to absorb shocks. Up to **1000 drops** from 4ft. / 1.20m



ANTIMICROBIAL PROTECTION

Sanitized® technology: **reduces microbes up to 99.9% in 24h**



RECYCLED MATERIAL & RECYCLABLE

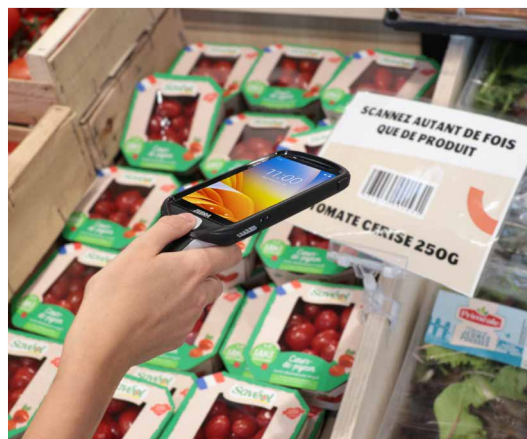
Case made with **30% recycled material & recyclable**



Zebra part number: 3PTY-MOB-065025
Mobilis reference : 065025



Compatible with all Zebra charging cradles
SKU# CRD-MC18-1SLOT-01 / SKU# CRD-MC18-3SLOT-01
SKU# CRD-MC18-3SLCKH-01



Compatible with Zebra Cart Holder
SKU# PSS-3SH01-00R

RUGGED BOOT ZEBRA PS30



Weight : 24 g | Dimensions : 138 x 82 x 33 mm

Shoulder strap in option



2 holes on each side to attach the shoulder strap

Screen protector in option



BOOST YOUR BRAND VISIBILITY!

Customize your protective boots with your colors and logo.



Also available for Zebra MC18-PS20



EXPLORE OUR
ZEBRA PRODUCTS

SPECIFICATIONS

Ref	Product	EAN Code	Packed product weight	Packed product dimensions	SPCB qty	PCB qty
065025	PROTECH - Case for Zebra PS30 - Softbag	3700992532318	32 g	129 x 241 x 35	5	10
001093	Basic Shoulder Strap with 4 soft rings - 2 attachment points	3700992532103	29 g	40 x 155 x 30	-	300
036331	Screen Protector Anti-Shock IK06 - Clear for Zebra PS30	3700992532684	18 g	90 x 185 x 2	20	40

datacapture.mobiliscase.com



@MOBILIS DataCapture



@Mobiliscase DataCapture

MOBILIS DATA CAPTURE®, the MOBILIS DATA CAPTURE® logos (logo MOBILIS DATA CAPTURE®, logo MOBILIS® DC et logo M), and other distinctive signs appearing on this file are trademarks of MOBILIS DEVELOPMENT. All logos are also protected by Copyright. Non-contractual pictures. Product compatible with PS20/MC18. PS and MC are trademarks or registered trademarks of ZIH Corp, which holds the exclusive rights. This product is not licensed, authorized or approved by ZIH Corp.

