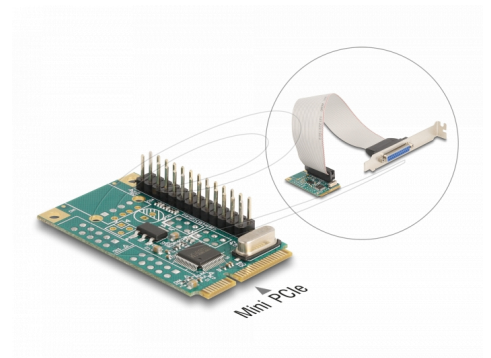


Delock Mini PCIe I/O PCIe full size 1 x Parallel

Description

This Mini PCIe card by Delock expands a PC by one external parallel port. Different devices such as scanner, printer etc. can be connected to this card.



Item no. 95275

EAN: 4043619952755

Country of origin: China

Package: Box

Technical details

- Connectors:
 - external:
 - 1 x parallel D-Sub 25 pin female
 - internal:
 - 1 x Mini PCI Express, Rev. 1.2
 - 1 x 26 pin pin header
- Chipset: WCH382L
- Form factor: Mini PCIe full size
- Data transfer rate up to 1 Mbps
- SPP, PS2, EPP, ECP compatible to IEEE 1284
- Cable length incl. connectors: ca. 25 cm
- Dimensions (LxWxH): ca. 51 x 30 x 10 mm

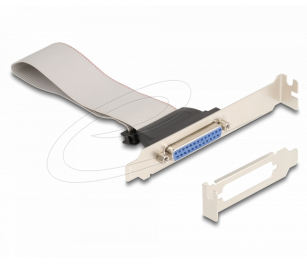
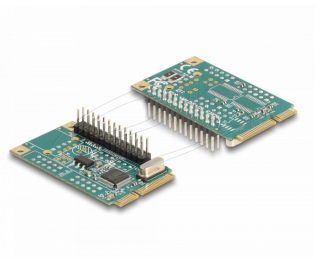
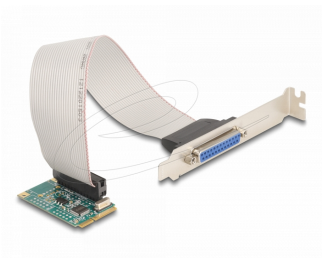
System requirements

- Linux Kernel 6.5 or above
- Windows 10/10-64/11
- Windows Server 2022
- Motherboard with a free Mini PCIe slot with a PCIe interface

Package content

- Mini PCIe module
- 1 parallel connecting cable
- 1 x standard bracket
- 1 x low profile bracket
- User manual

Images



General

Form factor:	Mini PCIe full size
Supported operating system:	Windows 10 32-Bit Windows 10 64-Bit Windows 11 Windows Server 2022 Linux Kernel 6.5 or above

Interface

Connector 1:	1 x Mini PCI Express, Rev. 1.2
Connector 2:	1 x D-Sub 25 pin female

Technical characteristics

Chipset:	WCH CH382L
Data transfer rate:	1 Mbps

Physical characteristics

Cable length incl. connectors:	25 cm
--------------------------------	-------

Manufacturer information

Street	Beeskowdamm 13/15
Postal code	14167
City	Berlin
Country	Deutschland
E-Mail	info@delock.de
Website	www.delock.de