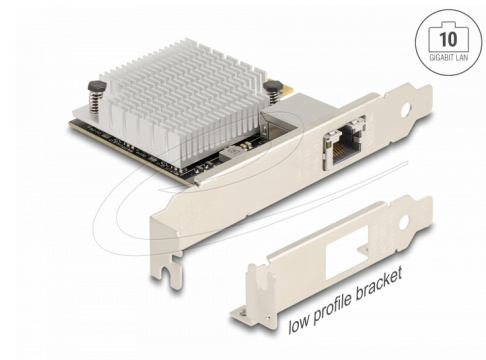


Delock PCI Express x4 Network Card 10 Gigabit LAN 1 x RJ45 AQC107S

Description

This PCI Express card by Delock offers a **network port** with a data transfer rate up to **10 Gbps** over conventional Cat.6 or Cat.6A copper cables. With the NBASE-T technology additional speeds of 2.5 Gbps and 5 Gbps are available. This allows **higher transmission rates** than 1 Gbps, when a 10 Gbps connection is not possible with the existing cable.



Item no. 90758

EAN: 4043619907588

Country of origin: China

Package: Box

Technical details

- Connectors:
external: 1 x 10 Gigabit LAN RJ45 jack
internal: 1 x PCI Express x4, V3.0
- Chipset: Aquantia AQC107S
- Data transfer rate:
Fast Ethernet up to 100 Mbps
Gigabit Ethernet up to 1 Gbps
NBASE-T with up to 2.5 Gbps and 5 Gbps
10 Gigabit Ethernet up to 10 Gbps
PCI Express x4 up to 32 Gbps
- Supports 16k Jumbo Frames
- Supports IEEE 802.1Q Virtual LAN (VLAN)
- LED indicator for link and activity

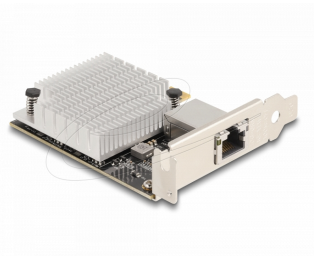
System requirements

- Windows 10/10-64/11
- PC with one free PCI Express x4 / x8 / x16 / x32 slot

Package content

- PCI Express card
- Low profile bracket
- User manual

Images



General

Supported operating system:	Windows 10 32-Bit Windows 10 64-Bit Windows 11
-----------------------------	--

Interface

External:	1 x 10 Gigabit LAN RJ45 jack
Internal:	1 x PCI Express x4, V3.0

Technical characteristics

Chipset:	Aquantia AQC107S
Data transfer rate:	Fast Ethernet up to 100 Mbps Gigabit Ethernet up to 1 Gbps NBASE-T (Draft) with up to 2,5 Gbps and 5 Gbps Gigabit Ethernet up to 10 Gbps

Physical characteristics

Slot bracket:	standard Low Profile
---------------	-------------------------

Manufacturer information

Street	Beeskowdamm 13/15
Postal code	14167
City	Berlin
Country	Deutschland
E-Mail	info@delock.de
Website	www.delock.de