

*msi*

PRO MP275QPG  
Infokit



THE LEAP TO  
SINGULARITY

The logo for IIISI, consisting of three vertical bars followed by the letters 'IISI' in a stylized, bold font.

# PRO MP275QPG

Business & Productivity Monitor



A person in a light blue shirt and dark pants stands on a rocky peak, looking out over a vast mountain range at sunset. The sky is filled with soft, golden light, and the mountains in the distance are silhouetted against the bright horizon. The person is holding a bag and a briefcase, suggesting a professional or traveler. The overall mood is serene and inspiring, emphasizing a connection with nature and sustainability.

## Embrace Sustainability with the Eco-Friendly PRO MP275QPG Monitor

Explore our Eco-friendly monitor PRO MP275QPG, meticulously designed to meet stringent environmental standards, ensuring a cleaner, greener world. Featuring cutting-edge enhancements like EyesErgo for user well-being and a silky-smooth 100Hz refresh rate, elevate your experience while making a sustainable choice.



### ECO-Friendly

Our Products meet rigorous environmental standards and promote sustainability

### 100Hz High Refresh Rate

Flawless Flow, No more Stutters. Provides smoother and more responsive visuals.



### EyesErgo

EyesErgo MSI EyesErgo Tech promotes eye health and comfort, enhancing user well-being.



### WQHD IPS Panel

With IPS Panel, users can enjoy bright colors from any angle.



### Productivity and Connectivity

Boost productivity with user-friendly features.



## EyesErgo Tech, Your Health Protector

Optimize well-being and work efficiency with our display's ergonomic design and eye care features. Enhanced comfort and promote healthier productivity.



Eye Care



Ergonomic



# MSI Eye Care Technology: Eye Care Panel



TUV Certified Anti-Flicker, Less Blue Light function reduces users' eye fatigue when working for long hours.

Anti-Glare panel minimizes the reflection and makes users view clearly easily.

**Market Share Data**

Ut Wisi Enim  
Ad Minim Veniam,  
Quis Nostrud

**+43,841**  
Lorem ipsum dolor sit amet, consectetur adipiscing elit, sed diam nonummy nibh euismod tincidunt ut laoreet dolore magna aliquam erat volutpat. Ut wisi enim ad minim veniam, quis nostrud exerci tation ullamcorper suscipit lobortis nisl.

**+80,841**  
Lorem ipsum dolor sit amet, consectetur adipiscing elit.  
Sed diam nonummy nibh euismod tincidunt ut laoreet dolore magna aliquam erat volutpat. Ut wisi enim ad minim veniam, quis nostrud exerci.

**+40,345**  
Lorem ipsum dolor sit amet, consectetur adipiscing elit, sed diam nonummy nibh euismod tincidunt ut laoreet dolore magna aliquam erat volutpat. Ut wisi enim ad minim veniam, quis nostrud exerci tation ullamcorper suscipit lobortis nisl ut aliquip ex ea commodo consequat.

**+41,298**  
Lorem ipsum dolor sit amet, consectetur adipiscing elit, sed diam nonummy nibh euismod tincidunt ut laoreet dolore magna aliquam erat volutpat.

Ut wisi enim ad minim veniam, quis nostrud exerci tation ullamcorper suscipit lobortis nisl ut aliquip ex ea commodo consequat. Duis autem vel eum iriure dolor in hendrerit in vulputate velit esse molestie consequat, vel illum dolore eu feugiat nulla facilisis at vero eros et accumsan et iusto odio dignissim qui blandit praesent

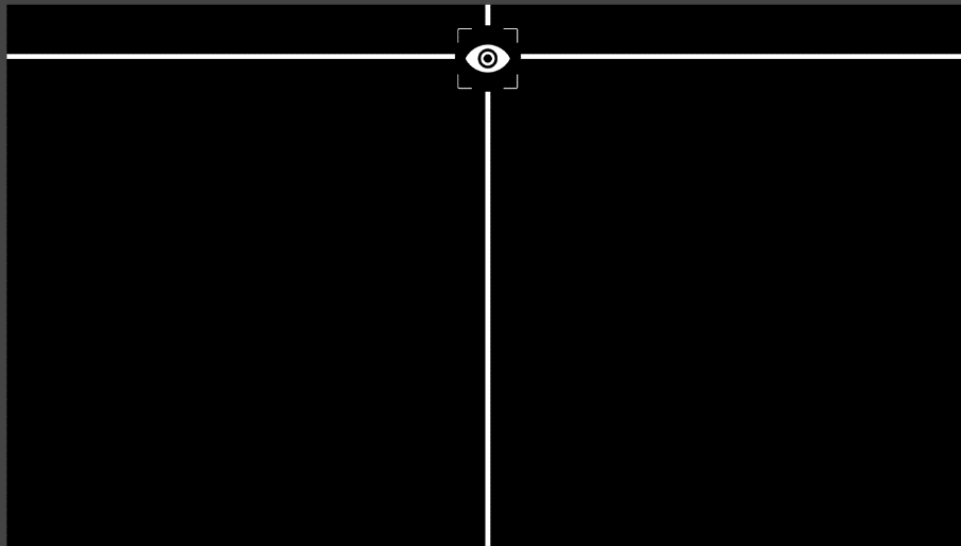
## MSI Eye Care Technology: Eye-Q Check



With Eye-Q Check, you can self-assess your eye health while working long hours, preventing eye problems from escalating.

### Posture Correction

MSI recommends you to sit up straight and adjust your eye position to one-ninth of the top edge of the screen. A good sitting posture can effectively prevent neck and shoulder pain.



# MSI Eye Care Technology: Eye-Q Check



Detect early signs of retinal disease with Amsler Grid

Astigmatism self-test

**Amsler Grid** MSI recommends you to take a rest for 20 minutes if any of the lines in the grid appear wavy, blurred or distorted; or if some boxes in the grid don't look like a square or the same size.

Two square grids are shown side-by-side. The left grid is a standard 10x10 grid with a black dot in the center. The right grid is also 10x10 with a central dot, but the lines are wavy and distorted, particularly in the center.

**Astigmatism** To test, cover your left eye with your left hand and look closely at the image, then do the same with your right eye. MSI recommends you to take a rest for 20 minutes if some lines appear greyer than others.

Two circular charts are shown side-by-side. Each chart has 12 radial lines extending from a central white circle, labeled 1 through 12. The left chart shows all lines in black. The right chart shows the same 12 lines, but the lines labeled 1, 2, 3, 4, 5, and 6 are significantly greyer than the others.



# MSI Eye Care Technology: 100Hz & 1ms



6. Quality of Goods & Services  
(i) The goods to be supplied shall be free from manufacturing defects and shall be replaced with a new one if found defective.  
(ii) The goods shall have a minimum warranty of 3 years from the date of purchase.  
(iii) The first party after the goods supplied shall be the manufacturer.

Lower Refresh Rate

used and shall be goods shall be  
and to the effect that a tender document

100Hz High Refresh Rate

## 100Hz + 1ms MPRT Flawless Flow, No More Stutters.

Attend the smoothest online conference call and show the perfect advertising video to customers with a 100Hz refresh rate.

VESA's research shows that for 95% of users, 85Hz Refresh Rate has become a de facto standard for normal use that shows "flicker-free" images.

*"85Hz – While not a "video-friendly" rate, 85Hz has become a de facto standard for PC displays wishing to meet the strictest ergonomic requirements for a "flicker-free" image. At this rate, typical CRT-based computer display, under standard viewing conditions, will appear "flicker-free" to greater than 95% of the population."*

- the VESA Coordinated Video Timings Standard Version 1.2

## Ergonomic Design: Adjustable Stand



Pivot:  $-90^{\circ}\sim 90^{\circ}$



Height:  $0\sim 130\text{mm}$



Tilt:  $-5^{\circ}\sim 20^{\circ}$



Swivel:  $-45^{\circ}\sim 45^{\circ}$

Working in a suitable position not only has a positive impact on job satisfaction and productivity but can also contribute to overall health and well-being. Also, 4-way adjustable stand allows users who need to work in a vertical way properly and efficiently.



## Adjustable Stand- Mini-PC Mountable Design



Experience the flexibility of a 4-way adjustable monitor and the convenience of a tidy desk with our mini-PC mountable stand.

# IPS Panel 178° Viewing Angle

A photograph of three business professionals (two men and one woman) sitting around a wooden desk, looking at a large computer monitor. The monitor displays a dashboard with various data visualizations, including a bar chart, a line graph, and several tables. The man on the left is pointing at the screen with a pencil, while the man in the middle and the woman on the right are looking on attentively. The scene is set in a modern office environment with large windows in the background.

**Vibrant Collaboration,  
Seamless Precision**

IPS panels enhance work with wide angles, accurate colors for collaboration, and assuring product colors. Promote productivity during extended sessions.

## WQHD Shows You More

2560 x 1440 (WQHD) resolution increases the viewing and working area, not only showing you more but also bringing improved readability, more vivid three-dimensional effects, and aesthetic beauty to your life.



A man and a woman in business attire are standing on a balcony, engaged in conversation. The man is holding a smartphone. The background shows a cityscape with buildings and a railing in the foreground.

# Productivity & Connectivity

# MSI Power Link Support



MSI Power Link supported by HDMI™ CEC allows the MSI mini-PC to be powered on by the power button of the monitor, to enhance efficiency and user experience.

\*Supports Cubi NUC & PRO DP21 14MQ Series

# Empower Productivity, Unleash Connectivity

PRO MP275 Series is the caring assistant that boosts your productivity.



## VESA Mountable

The PRO MP275PG supports the standard VESA mount. You can mount the monitor with MSI monitor arm or mount it on the wall and make the desk tidier and cleaner.





## Built-in Speakers

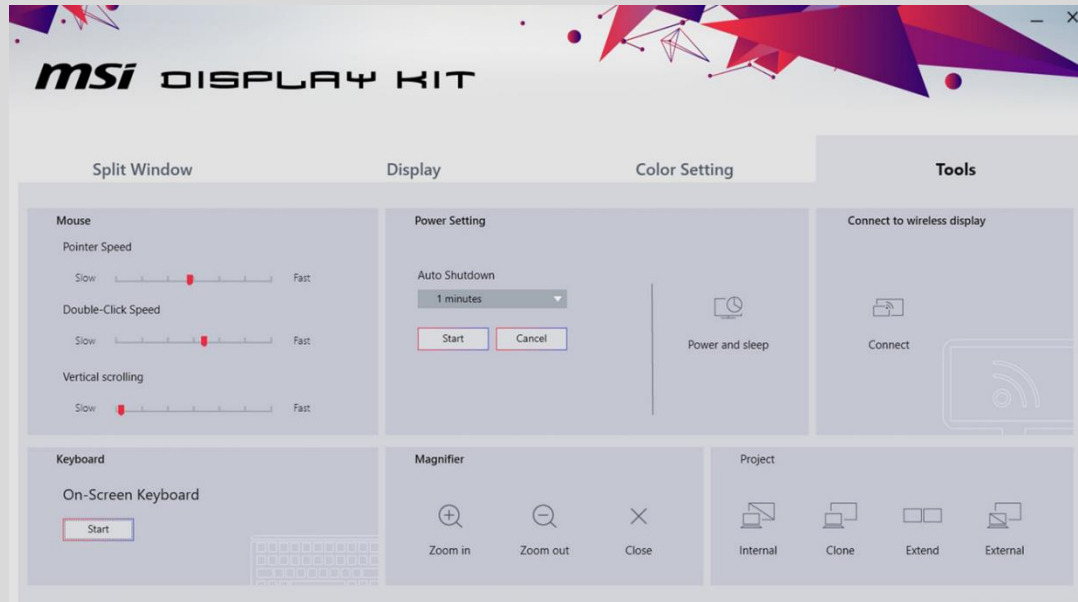
With two built-in speakers, users were allowed to listen to audio files, to attend online conferences, or to edit videos at any time without carrying an external speaker or wearing a headphone.

## Complete I/O Ports

No problem at all if you'd like to work or learn with different devices. PRO MP275 Series supports one HDMI and one D-Sub (VGA), it keeps the flexibility with dual sources for your multiple devices.

# Simplicity At Your Fingertips

## Display Kit App



Connect to  
Wireless Display



Layout Setting



Auto-Shutdown



Zoom in/ out

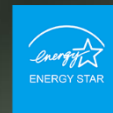


Project Mode

The MSI exclusive software Display Kit provides the most convenient tool, the proper display that allows you to read and enjoy the image at the same time & color mode to you while working or everyday.

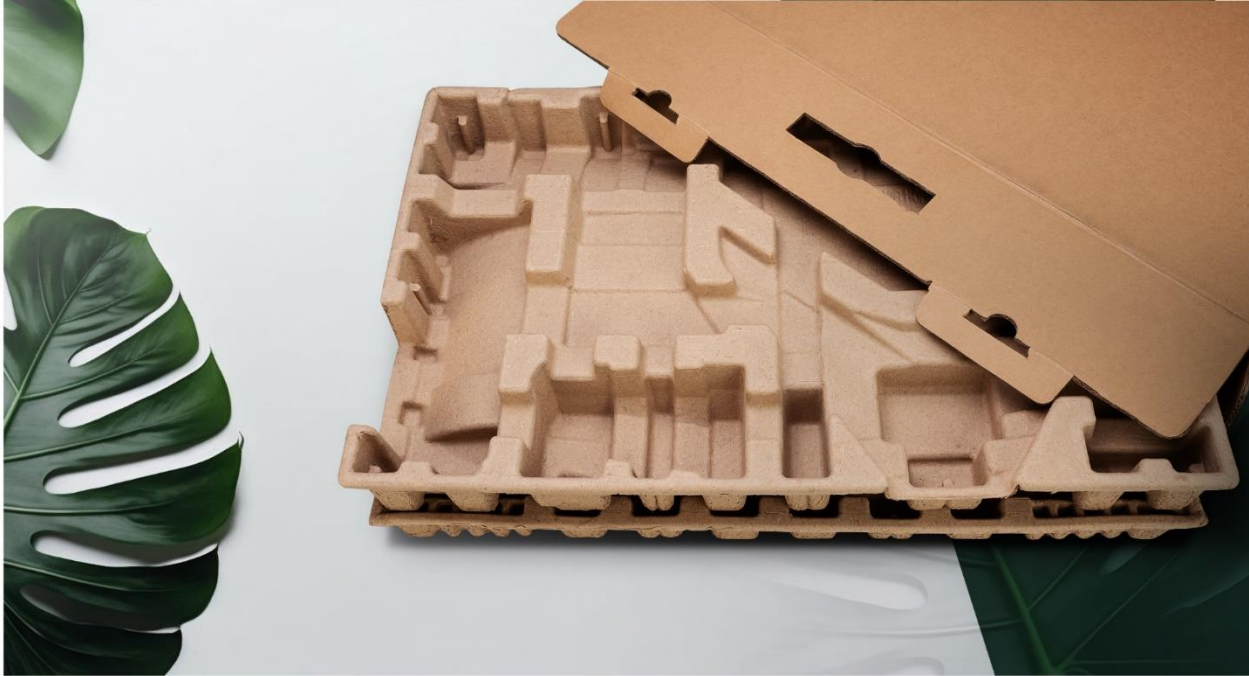
## Power Saving Product

- ✓ Power Saving Mode
- ✓ Energy Star 8.0



It is our responsibility to promote sustainable development and we proudly offer an eco-friendly product, contributing to a greener environment.





## **Sustainable Packing Solutions**

Reduce the environmental impact with our sustainable solutions.



## **A Better Future with EPEAT Registered MSI Monitors.**

EPEAT is the world's premier global ecolabel for electronics. MSI monitors provide sustainable products inside out and participate in EPEAT/EPEAT ecolabel. Let's protect the earth with actions.

\*Micro-Star International Co., Ltd. registers products in EPEAT. See [www.epeat.net](http://www.epeat.net) for registration status and tier levels by country.



# PRO MP275QPG Specification

*msi*



1. 5-way Navigator
2. 1x AC-in
3. 1x HDMI™ 2.0b (WQHD@100Hz)
4. 1x DisplayPort
5. 1x HDMI™ 2.0b (WQHD@100Hz)
6. 1x Headphone-out
7. 1x Kensington Lock

Type / Size	27"
Active Display Area (mm)	596.736(H) x 335.664(V)
Curvature	Flat
Panel Type	IPS
Resolution	2560 x 1440 (WQHD)
Pixel Pitch	0.2331(H) x 0.2331(V)
Aspect Ratio	16:9
Brightness (nits)	300 cd/m <sup>2</sup>
Contrast Ratio	1300:1
Refresh Rate	100Hz
Response Time	1ms(MPRT) / 4ms (GTG)
View Angles	178°(H) / 178°(V)
sRGB	100% (CIE 1976)
Surface Treatment	Anti-glare
Display Colors	1.07B
Color Bit	10 bits (8 bits + FRC)
Video Interface	2x HDMI™ 2.0b (WQHD@100Hz) 1x DisplayPort 1.2a
Audio Interface	1x Headphone-out
Speaker	2 x 2W
Power Type	Internal Power Board
Power Input	100~240V, 50~60Hz
Adjustment (Tilt)	-5°~20°
Adjustment (Swivel)	-45°~45°
Adjustment (Pivot)	-90°~90°
Adjustment (Height)	0 ~ 130 mm
Kensington Lock	Yes
VESA Mounting	100 x 100 mm
Dimension (W x D x H)	614.0 x 226.9 x 562.6 mm (24.2 x 8.9 x 22.1 inch)
Weight (NW / GW)	6.26 kg (13.8 lbs) / 9.32 kg (20.54 lbs)
Dimension (W x D x H) With Carton	831 x 133 x 448 mm (32.7 x 5.2 x 17.6 inch)
Note	HDMI: 2560 x 1440 (Up to 100Hz) DisplayPort: 2560 x 1440 (Up to 100Hz) HDMI CEC Support Adaptive-Sync Support Display Kit Support Plan to Pass EPEAT Silver (by country)



*msi*

THE LEAP TO SINGULARITY

