

HPE Compute Ops QuickSpecs

HPE Compute Ops Management is a secure, software-as-a-service (SaaS) compute management tool that intelligently modernizes the compute lifecycle management experience.

No matter where compute resides, from secure onboarding to simplifying updates and compliance, to unifying monitoring and management. Get HPE Compute Ops Management to work for you!

Overview

HPE Compute Ops Management

HPE Compute Ops Management simplifies and automates operations across the server lifecycle, no matter where your compute infrastructure lives. The service provides a consistent, secure cloud experience for the whole environment that scales elastically and unifies compute management in a single pane of glass.

Discover a completely modernized compute management experience delivered through HPE GreenLake cloud that securely streamlines operations and automates key lifecycle tasks, bringing the agility and greater efficiencies to wherever compute devices reside via a unified single browser-based interface.

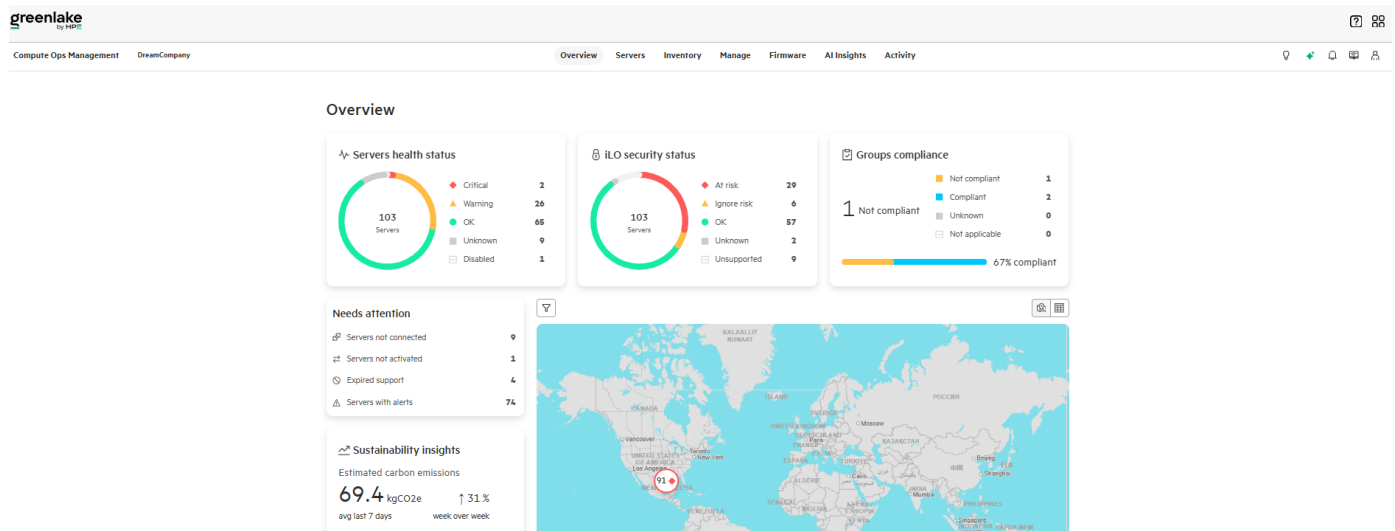
- Delivers cloud operational agility by unifying compute operations as a service across the compute lifecycle from edge-to-cloud.
- Brings together cloud-native control and operations, workload-centric optimization across the compute lifecycle, and AI-driven intelligent insights and automation.

What's New

- Compute Copilot: Your AI partner in server management
- Custom firmware baseline Location and tag with activation token
- One-hour power consumption
- Manual case creation with auto AHS
- Notification email for power cycle and iLO connectivity
- [New Platform support](#)

Compute Ops Management is built on a unique cloud-native architecture that abstracts, manages, and controls HPE servers regardless of physical location. Compute Ops Management resides in HPE GreenLake cloud (Single Entry Portal - common.cloud.HPE.com). This leverages the HPE GreenLake architecture, security, and unified operations including but not limited to:

- Secure connection from customer sites to HPE cloud service
- Unified Identity & Access Management
- Subscription-based entitlement
- Efficient Device Onboarding



HPE Compute Ops Management

Standard Features

HPE Compute Ops Management

Compute Ops Management is designed to seamlessly monitor, manage and gain visibility of your distributed computing environment from a single pane of glass. Compute Ops Management is offered in a single-tier subscription model.

Key capabilities of the platform includes (but are not limited to):

- Fleet Server Management
- Server Lifecycle Management
 - Seamless firmware upgrades with Intelligent delta-based updates
 - Group-based firmware management that can be scheduled or on-demand
 - Serial and parallel firmware updates with 'Stop on failure' option
 - Automatic and on-demand iLO firmware updates
 - Firmware update with iSUT & AMS integration along with BIOS settings
 - Ability to support RAID0, RAID1 and RAID5 storage configurations
 - Automatic update of firmware baseline
 - Set group firmware baseline and compliance monitoring and in-app alert
 - Automatic and on-demand firmware compliance checking
 - OS Image deployment
- Supportability
 - Automatic creation of HPE support cases for critical serviceable events
 - Notification of critical hardware alerts via in-app and email notifications
 - On-demand firmware compliance reporting
 - Ability to track audit logs on individual servers via the Activity tab
 - Remote console into respective iLOs using a web browser with HTML5 support
 - Exporting the server inventory from the COM UI
- Identity & Access Management
 - Role-based Access Control (RBAC)
 - Single Sign-on (SSO)
 - Resource-level restriction policies (RRP)
- Sustainability insights
 - Power, cost and carbon emission data (historical and projection)
 -
- Multi-platform support
 - Please see [supported platform list](#)
- Integrations
 - REST API support
 - VMware vCenter Lifecycle Manager (vLCM) plug-in module
 - HPE Compute Ops Management simplifies the management of compute operations by providing a centralized cloud-based platform. It now includes integration with VMware vSphere Lifecycle Manager (vLCM), allowing for easy firmware and driver updates for HPE ProLiant Servers directly from the vCenter console.

Subscription

Compute Ops Management is offered as a subscription service. A 3-year subscription to HPE Compute Ops Management **is added by default** when ordering an HPE ProLiant Gen11 rack, tower, MicroServer, HPE Alletra Storage server, or HPE StoreEasy Storage.

Standard Features

When purchasing, the customer will need to choose from the following attributes:

- Tier: Single tier licensing model
- Term: 1 year, 3 years or 5 years
- Platform: Select the HPE Server Platform family to manage
- Billing Model: SaaS
- Billing Frequency: Upfront

Alternatively, customers can purchase and use HPE Compute Ops Management with existing qualifying servers they may already own, or purchase and use with a new qualifying server purchase through HPE or through an authorized HPE Partner. The current attributes are available when purchasing standalone Compute Ops Management subscription:

- Tier: Single tier licensing model
- Term: 1 year, 3 years or 5 years
- Platform: Select the HPE Server Platform family to manage
- Billing Model: SaaS
- Billing Frequency: Upfront

Supported Devices

The devices supported for use with Compute Ops Management can be found [here](#)

Service and Support

HPE Services

No matter where you are in your digital transformation journey, you can count on HPE Services to deliver the expertise you need when, where, and how you need it. From planning to deployment, ongoing operations and beyond, our experts can help you realize your digital ambitions.

<https://www.HPE.com/services>

Consulting Services

No matter where you are on your journey to hybrid cloud, experts can help you map out your next steps. From determining what workloads should live where, to handling governance and compliance, to managing costs, our experts can help you optimize your operations.

<https://www.HPE.com/services/consulting>

HPE Managed Services

HPE runs your IT operations, providing services that monitor, operate, and optimize your infrastructure and applications, delivered consistently and globally to give you unified control and let you focus on innovation.

[HPE Managed Services | HPE](#)

Operational services

Optimize your entire IT environment and drive innovation. Manage day-to-day IT operational tasks while freeing up valuable time and resources. Meet service-level targets and business objectives with features designed to drive better business outcomes.

<https://www.HPE.com/services/operational>

HPE Complete Care Service

HPE Complete Care Service is a modular, edge-to-cloud IT environment service designed to help optimize your entire IT environment and achieve agreed upon IT outcomes and business goals through a personalized experience. All delivered by an assigned team of HPE Services experts. HPE Complete Care Service provides:

- A complete coverage approach – edge-to-cloud
- An assigned HPE team
- Modular and fully personalized engagement
- Enhanced Incident Management experience with priority access
- Digitally enabled and AI driven customer experience

<https://www.HPE.com/services/complecare>

Service and Support

HPE Tech Care Service

HPE Tech Care Service is the operational support service experience for HPE products. The service goes beyond traditional support by providing access to product specific experts, an AI driven digital experience, and general technical guidance to not only reduce risk but constantly search for ways to do things better. HPE Tech Care Service delivers a customer-centric, AI driven, and digitally enabled customer experience to move your business forward. HPE Tech Care Service is available in three response levels. Basic, which provides 9x5 business hour availability and a 2-hour response time. Essential, which provides a 15-minute response time 24x7 for most enterprise level customers, and Critical, which includes a 6-hour repair commitment where available and outage management response for severity 1 incidents.

<https://www.HPE.com/services/techcare>

HPE Lifecycle Services

HPE Lifecycle Services provide a variety of options to help maintain your HPE systems and solutions at all stages of the product lifecycle. A few popular examples include:

- Lifecycle Install and Startup Services: Various levels for physical installation and power on, remote access setup, installation and startup, and enhanced installation services with the operating system.
- HPE Firmware Update Analysis Service: Recommendations for firmware revision levels for selected HPE products, taking into account the relevant revision dependencies within your IT environment.
- HPE Firmware Update Implementation Service: Implementation of firmware updates for selected HPE server, storage, and solution products, taking into account the relevant revision dependencies within your IT environment.
- Implementation assistance services: Highly trained technical service specialists to assist you with a variety of activities, ranging from design, implementation, and platform deployment to consolidation, migration, project management, and onsite technical forums.
- HPE Service Credits: Access to prepaid services for flexibility to choose from a variety of specialized service activities, including assessments, performance maintenance reviews, firmware management, professional services, and operational best practices.

Notes: To review the list of Lifecycle Services available for your product go to:

<https://www.HPE.com/services/lifecycle>

For a list of the most frequently purchased services using service credits, see the [HPE Service Credits Menu](#)

Other Related Services from HPE Services

HPE Education Services

Training and certification designed for IT and business professionals across all industries. Broad catalogue of course offerings to expand skills and proficiencies in topics ranging from cloud and cybersecurity to AI and DevOps. Create learning paths to expand proficiency in a specific subject. Schedule training in a way that works best for your business with flexible continuous learning options.

<https://www.HPE.com/services/training>

Service and Support

Defective Media Retention

An option available with HPE Complete Care Service and HPE Tech Care Service and applies only to Disk or eligible SSD/Flash Drives replaced by HPE due to malfunction.

Consult your HPE Sales Representative or Authorized Channel Partner of choice for any additional questions and service options.

Parts and Materials

HPE will provide HPE-supported replacement parts and materials necessary to maintain the covered hardware product in operating condition, including parts and materials for available and recommended engineering improvements.

Parts and components that have reached their maximum supported lifetime and/or the maximum usage limitations as set forth in the manufacturer's operating manual, product QuickSpecs, or the technical product data sheet will not be provided, repaired, or replaced as part of these services.

How to Purchase Services

Services are sold by Hewlett Packard Enterprise and Hewlett Packard Enterprise Authorized Service Partners:

- Services for customers purchasing from HPE or an enterprise reseller are quoted using HPE order configuration tools.
- Customers purchasing from a commercial reseller can find services at <https://ssc.HPE.com/portal/site/ssc/>

AI Powered and Digitally Enabled Support Experience

Achieve faster time to resolution with access to product-specific resources and expertise through a digital and data driven customer experience

Sign into the HPE Support Center experience, featuring streamlined self-serve case creation and management capabilities with inline knowledge recommendations. You will also find personalized task alerts and powerful troubleshooting support through an intelligent virtual agent with seamless transition when needed to a live support agent.

<https://support.HPE.com/hpesc/public/home/signin>

Consume IT On Your Terms

[GreenLake](#) is the cloud delivering a unified platform experience that allows enterprises to simplify IT, reduce costs, and transform faster.

- Get faster time to market
- Save on TCO, align costs to business
- Scale quickly, meet unpredictable demand
- Simplify IT operations across your data centers and clouds

To learn more about HPE Services, please contact your Hewlett Packard Enterprise sales representative or Hewlett Packard Enterprise Authorized Channel Partner. Contact information for a representative in your area can be found at "Contact HPE" <https://www.HPE.com/us/en/contact-HPE.html>

For more information, refer to: <http://www.HPE.com/services>

Configuration Information

Startup and Configuration

Getting your HPE Compute Ops Management application ready to manage your HPE qualifying servers (devices) requires a few simple steps.

1. Set up your free account in HPE GreenLake cloud (Users with existing HPE GreenLake accounts may use that account)
2. Set up Roles and Users
3. Onboard devices
4. Associate subscription entitlement to devices
5. Launch Compute Ops Management

The complete Compute Ops Management Setup Guide can be found [here](#).

HPE Compute Ops Management SKUs

Description**SKU****Configurable SKU through ASQ**

HPE Compute Ops Management Base SaaS

R6Z73AAE

HPE Compute Ops Management Standard with ProLiant Enablement

S2R34AAE

HPE Compute Ops Management Standard with Alletra 4000 Enablement

S4P39AAE

Notes: To allow COM to be included and transacted as part of a GL Flex solution and contracts both the tracking SKU and COM SaaS SKU are needed.

Material Number	Material Description	SKU Type
R6Z73AAE	HPE Compute Ops Management Base SaaS	Fully-configurable SKU
R7A10AAE	HPE Compute Ops Management Standard 1-year Upfront ProLiant SaaS	Pre-configured SKU
R7A11AAE	HPE Compute Ops Management Standard 3-year Upfront ProLiant SaaS	Pre-configured SKU
R7A12AAE	HPE Compute Ops Management Standard 5-year Upfront ProLiant SaaS	Pre-configured SKU
S1E11AAE	HPE Compute Ops Management Standard 1-year Upfront Alletra 4000 SaaS	Pre-configured SKU
S1E12AAE	HPE Compute Ops Management Standard 3-year Upfront Alletra 4000 SaaS	Pre-configured SKU
S1E13AAE	HPE Compute Ops Management Standard 5-year Upfront Alletra 4000 SaaS	Pre-configured SKU

Configuration Information

Material Number	Material Description	SKU Type
R6Z73AAE	HPE Compute Ops Management Base SaaS	Fully-configurable SKU
S5E58AAE	HPE Compute Ops Management Advanced 1yr Up ProLiant SaaS	Pre-configured SKU
S5E59AAE	HPE Compute Ops Management Advanced 3yr Up ProLiant SaaS	Pre-configured SKU
S5E60AAE	HPE Compute Ops Management Advanced 5yr Up ProLiant SaaS	Pre-configured SKU
S5E61AAE	HPE Compute Ops Management Advanced 7yr Up ProLiant SaaS	Pre-configured SKU
S5E62AAE	HPE Compute Ops Management Advanced 1-year Upfront Alletra 4000 SaaS	Pre-configured SKU
S5E63AAE	HPE Compute Ops Management Advanced 3-year Upfront Alletra 4000 SaaS	Pre-configured SKU
S5E64AAE	HPE Compute Ops Management Advanced 5-year Upfront Alletra 4000 SaaS	Pre-configured SKU
S5E65AAE	HPE Compute Ops Management Advanced 7-year Upfront Alletra 4000 SaaS	Pre-configured SKU

HPE Compute Ops Management - OneView Edition (requires subscription)

Manage your HPE Synergy and OneView instances remotely from within the HPE GreenLake platform. HPE Compute Ops Management - OneView Edition enables you to:

- Have a cohesive experience for managing both HPE Synergy and ProLiant servers
- Access multiple sites from a centralized cloud-based console
- Manage all connected appliances from a single login
- Ensure consistency across server profiles/appliances

Configuration Information

OneView Appliances - 2

Connection state
0 Not connected
1 Not activated
1 Connected

Settings compliance
0 Not compliant
2 Unknown
0 Compliant

Activity

- Appliance updated**
Name of appliance changed to ov-alerts-3.com
5/1/2023 2:42:09 PM
- Appliance connected**
ov-alerts-3.com appliance connected to Project Denali
5/1/2023 2:42:07 PM
- Appliance added**
ov-alerts-3.com appliance added to Project Denali
5/1/2023 2:41:36 PM
- Server connected**
WIN-GP3VHL57C9V connected to Compute Ops Management
5/1/2023 11:25:25 AM
- Server disconnected**
WIN-GP3VHL57C9V disconnected from Compute Ops Management
5/1/2023 11:23:06 AM

2 Items

Name	Appliance ID	State	Appliance settings template	Compliance
d5c1c203-4b5a-4405-a...	d5c1c203-4b5a-4405-ab92-2dd14229fb05	Not activated	--	Unknown
ov-alerts-3.com	a265bf4d-a685-47cb-b86e-d1b44095196a	Connected	--	Unknown

Add OneView appliance

View all >

HPE Compute Ops Management - OneView Edition

HPE has created a new service, called HPE Compute Ops Management - OneView Edition, that will allow customers to have a cloud experience for their HPE OneView instances from within HPE GreenLake cloud. This add-on subscription service aggregates connections to locations running HPE OneView appliances and provides customers with a centralized, cloud-based console for multi-site management support, with enhanced appliance configuration consistency, reporting, analytics, and support automation.

HPE OneView instances must be running at a minimum of version 8.4

Key capabilities of the platform includes (but not limited to):

- OneView Appliance onboard process (OV-cloud adapter)
- Connected appliance details (IP/FQDN, version, type)
- Full server inventory view
- Server resource alerts
- Server profile association and base inventory
- Unification of OneView Server Inventory with COM Server Inventory
- HPE GreenLake Sustainability Insight Center power and thermal utilization integration, including server location data
- Upgrade HPE OneView from HPE COM-OneView Edition
- Copy server profile templates between HPE OneView appliances
- Automatically tracking of settings compliance
- Upfront Billing
- Subscription + Consumption model

Configuration Information

Platforms supported (within OneView support matrix):

- HPE ProLiant – Gen8 and newer
- HPE Synergy – Gen9 and newer
- HPE Apollo – Gen9 and newer
- HPE Superdome – Flex and newer

To use HPE or Compute Ops Management - OneView Edition, a subscription must be purchased.

SKU= SOP96AAE HPE Compute Ops Management - OneView Edition.

24x7 support is included with the subscription at no additional charge. The HPE Services Team will assist users with HPE GreenLake account setup and Compute Ops Management - OneView Edition questions and issues.

Subscription

- Licensed per server device
- Initiated with a minimum commit for billing
- Priced on the number of devices that you license for connection to COM-OneView Edition
- Billed monthly with 1/3/5yr term payment
- Additional server devices added during the month, above the minimum, are billed within a consumption model monthly usage above the minimum.

Startup and Configuration

Getting your HPE Compute Ops Management - OneView Edition application ready to manage your HPE qualifying synergy infrastructure requires a few simple steps.

1. Set up HPE GreenLake account.
2. Add a Compute Ops Management - OneView Edition service subscription key.
3. The Compute Ops Management - OneView Edition features are displayed in the Compute Ops Management UI only when a service subscription is installed.
4. Prepare HPE OneView appliances for management.
5. Verify HPE OneView appliance connectivity and access.
6. Generate and copy appliance IDs.
7. Add appliances to Compute Ops Management.
8. Activate appliances for management.

The complete HPE COM-OneView Edition Setup Guide can be found [here](#).

Configuration Information

Dynamic collaboration

Among experts, it replaces static and manual use of whiteboards, sticky notes, emails, and spreadsheets. The single integrated platform provides 'one view' across the converged infrastructure, enabling collaboration through real-time, context-sensitive information sharing.

HPE OneView continues to advance software-defined intelligence with a new updated user interface for provisioning, updating, and integrating compute, storage, and networking infrastructure. This UI update makes HPE OneView even easier to use.

Notes:

- COM subscription customers do not need to purchase a COM-OVE SKU if they do not have HPE OneView or do not need to manage HPE Synergy environments from COM console.
 - Only one subscription per workspace is supported. Any attempt to add more than one subscription in a HPE Compute Ops Management workspace will not be supported.
-

Summary of Changes

Date	Version History	Action	Description of Change
06-Apr-2026	Version 20	Added	Added new What's New items, including support for custom firmware baselines, activation token-based location and tagging, one-hour power consumption reporting, automated AHS-based case creation, and notification emails for power cycle and iLO connectivity events.
		Removed	Removed previously listed What's New capabilities related to COM enterprise workspace transfer, firmware pre-fetch, secure gateway for VME, server-level firmware baselines, approval workflows, manual case creation, server log generation, server utilization reporting, and iLO connectivity testing enhancements.
15-Dec-2025	Version 19	Changed	Overview section was updated.
28-Jul-2025	Version 18	Changed	Updated survey link.
05-May-2025	Version 17	Changed	Overview section was updated. Added COM Advanced Tier specs.
07-Apr-2025	Version 16	Changed	Overview section and Configuration Information sections were updated. Added: COM Advanced SKUs and QuickSpecs Survey.
02-Dec-2024	Version 15	Changed	Series Name changed to HPE Compute Ops Management
03-Sep-2024	Version 14	Changed	Overview and Configuration Information sections were updated.
01-Jul-2024	Version 13	Changed	Overview Section was updated.
01-Apr-2024	Version 12	Changed	Overview Section was updated.
06-Nov-2023	Version 11	Changed	Service and Support and Configuration Information sections were updated. (Addition of GL Flex Tracking SKU)
21-Aug-2023	Version 10	Changed	Service and Support and Configuration Information sections were updated
07-Aug-2023	Version 9	Changed	Standard Features and Service and Support sections were updated. HPE Compute Ops Management – OneView Edition information was added.
10-Jul-2023	Version 8	Changed	Standard Features and Configuration Information sections were updated
05-Jun-2023	Version 7	Changed	Standard Features section was updated
01-May-2023	Version 6	Changed	Overview, Standard Features, Service and Support and Configuration Information sections were updated Ganesh updated the doc to reflect the current feature sets as of May 1, 2023
10-Jan-2023	Version 5	Changed	Overview and Standard Features sections were updated. Added support for HPE Alletra 4000
10-Nov-2022	Version 4	Changed	Overview, Standard Features, Service and Support and Configuration Information sections were updated Made updates related to latest product features; fixed support section
06-Jun-2022	Version 3	Changed	Overview and Standard Features sections were updated.
28-Mar-2022	Version 2	Changed	QS name was updated to HPE Compute Ops Management.
07-Mar-2022	Version 1	New	New QuickSpecs

[Shape the Future of QuickSpecs - Your Input Matters](#)

[Chat now](#)

© Copyright 2026 Hewlett Packard Enterprise Development LP. The information contained herein is subject to change without notice. The only warranties for Hewlett Packard Enterprise products and services are set forth in the express warranty statements accompanying such products and services. Nothing herein should be construed as constituting an additional warranty. Hewlett Packard Enterprise shall not be liable for technical or editorial errors or omissions contained herein.

Microsoft and Windows are registered trademarks or trademarks of Microsoft Corporation in the U.S. and/or other countries.

VMware is a registered trademark of VMware, Inc. in the United States and/or other jurisdictions.

a50004263enw - 16867 - Worldwide - V20 - 06-April-2026
HEWLETT PACKARD ENTERPRISE
HPE.com

