

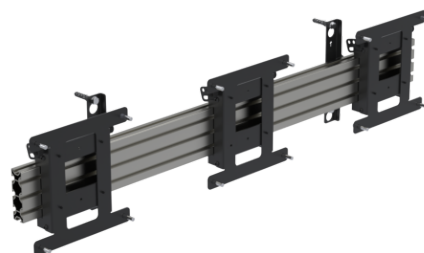
Menu board mount, with tilt, for 3 screens (portrait) up to 32" (VESA 100 and 200) - A2

WT223110LL-A2



Our wall mounted Menu Board with tilt is designed for three screens (up to 32") in portrait orientation. It supports VESA 100 & 200 configurations and features adjustable tilt for optimal viewing angles. Perfect for dynamic menus or digital signage.

Compatible with 3 screens up to 32" in portrait orientation
Includes micro adjustment Easy hook-on mounting of screens
Includes fixing to secure screens at the bottom Quick release - Optional
Tilt (°): 0-15° Rail can be cut to size for smaller screens



Product Specifications

Colour Name	Aluminium /Black
Colour Type	Structured
Main material	Metal
Product Version	1.0
Enclosure Format	Single Sided
Max weight capacity (kg)	150
Mounting	VESA
Mounting Type	Wall
Screen size supported	15", 17", 19", 21", 24", 27", 32"
VESA mounting standard	100 x 100, 200 x 200
Units per Box	1
Unit Weight	7.59 kg
Box Weight	9.41 kg
Warranty	5 Years

Product Dimensions

Unit Depth	80 mm
Unit Height	235.1 mm
Unit Weight	7.59 kg

Package Dimensions

Box Depth	1200 mm
Box Height	350 mm
Box Width	250 mm



www.ergonomic.solutions