



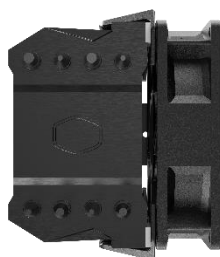
Cooler Master's high-performance series of CPU air coolers, the Hyper series, is back with the Hyper 411 Nano. The Hyper 411 Nano brings a crop of excellent features to round out the already cutting-edge performance of the Hyper series. With direct contact technology for ultra-rapid heat transfer, an all-black aesthetic, wide-ranging compatibility with both AMD and Intel CPUs, and an easy-to-use fan mount system, the Hyper 411 Nano is an ice-cold beast.

HYPER 411 NANO



DIRECT CONTACT TECHNOLOGY

4 heat pipes with direct contact ensure efficient and rapid heat transfer



ALL BLACK AESTHETIC

A new all black aesthetic gives the Hyper N a modern, sleek look



AMD AND INTEL COMPATIBILITY

Improved mounting ensures compatibility with the latest AMD and Intel CPU sockets



EASY FAN MOUNT

Easily mount fans using a set of provided clips

DIRECT CONTACT TECHNOLOGY - 4 heat pipes with direct contact ensure efficient and rapid heat transfer

ALL BLACK AESTHETIC - A new all black aesthetic gives the Hyper N a modern, sleek look

AMD AND INTEL COMPATIBILITY - Improved mounting ensures compatibility with the latest AMD and Intel CPU sockets

EASY FAN MOUNT - Easily mount fans using a set of provided clips

SPECIFICATIONS

Product Name		Hyper 411 Nano
Product Number		RR-H410-25PK-R1
Exterior Color		Black
CPU Socket	Intel® LGA 1851 / 1700 / 1200 / 1151 / 1150 / 1155 / 1156 sockets	
	AMD® AM5 / AM4 sockets	
Dimensions (L x W x H)		102 x 85 x 136 mm / 4.0 x 3.2 x 5.3 inch
Heat Sink Material		4 Heat Pipes / Direct Contact / Aluminum Fins
Fan	Dimensions (L x W x H)	92 x 92 x 25.4 mm (3.6 x 3.6 x 1 in.)
	Quantity	1 PCS
	Speed	650 ~ 2500 RPM (PWM) ± 10%
	Airflow	76.2 m³/h(45.14 CFM)
	Noise Level	30.04 dB(A)
	Pressure	3.25 mmH₂O (Max)
	MTTF	> 160,000 hours
	Power Connector	4-Pin (PWM)
	Rated Voltage	12 VDC
	Rated Current	0.14 A
	Safety Current	0.18 A
	Power Consumption	1.68 W
Warranty		2 years

PACKING INFORMATION

EAN Code	4719512154656
UPC Code	884102126970
Net weight	0.506 kg
Gross weight	0.69 kg
Package dimension (L x W x H)	10.9 x 13.3 x 16.2 cm
Carton dimension (L x W x H)	56.5 x 28.6 x 19.6 cm
Unit / Pallet	10

Cont.	W/ Pallet	Carton / Pallet	W/O Pallet
20'	6600	60	N/A
40'	13200	60	N/A
40 HQ	14520	66	N/A