

msi

PRO MP225V infokit



THE LEAP TO
SINGULARITY

MSI

PRO MP225V

Business & Productivity Monitor



A person in a light blue shirt and dark pants stands on a rocky peak, looking out over a vast mountain range under a golden sunset sky. The person is silhouetted against the bright light of the setting sun. The mountains in the distance are layered and hazy, creating a sense of depth. The foreground shows the rugged texture of the rock the person is standing on.

The Outstanding 21.45" 100Hz EyesErgo Business Monitor

21.45-Inch EyesErgo monitor with 100Hz refresh rate offers a wider view and enhance productivity. EyesErgo technology nurtures well-being through reduced strain and ergonomic design. We are elevating visuals and productivity with seamless hardware and software integration and welcoming 100Hz of innovation to the future of work.



 **EyesErgo**
MSI EyesErgo Tech promotes eye health and comfort, enhancing user well-being.

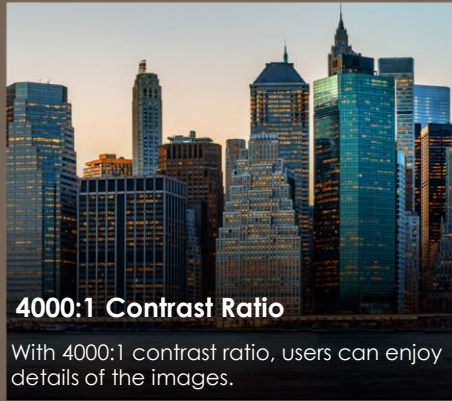
100Hz High Refresh Rate

Flawless Flow, No more Stutters. Provides smoother and more responsive visuals.



21.45" Screen Size

A 21.45-inch screen size enhances viewing experiences and improves multi-tasking capabilities.



4000:1 Contrast Ratio

With 4000:1 contrast ratio, users can enjoy details of the images.



Productivity and Connectivity

Boost productivity with user-friendly features.



EyesErgo

EyesErgo Tech, Your Health Protector

Optimize well-being and work efficiency with our display's ergonomic design and eye care features. Enhanced comfort and promote healthier productivity.



MSI Eye Care Technology: Eye-Q Check

*Enable from OSD

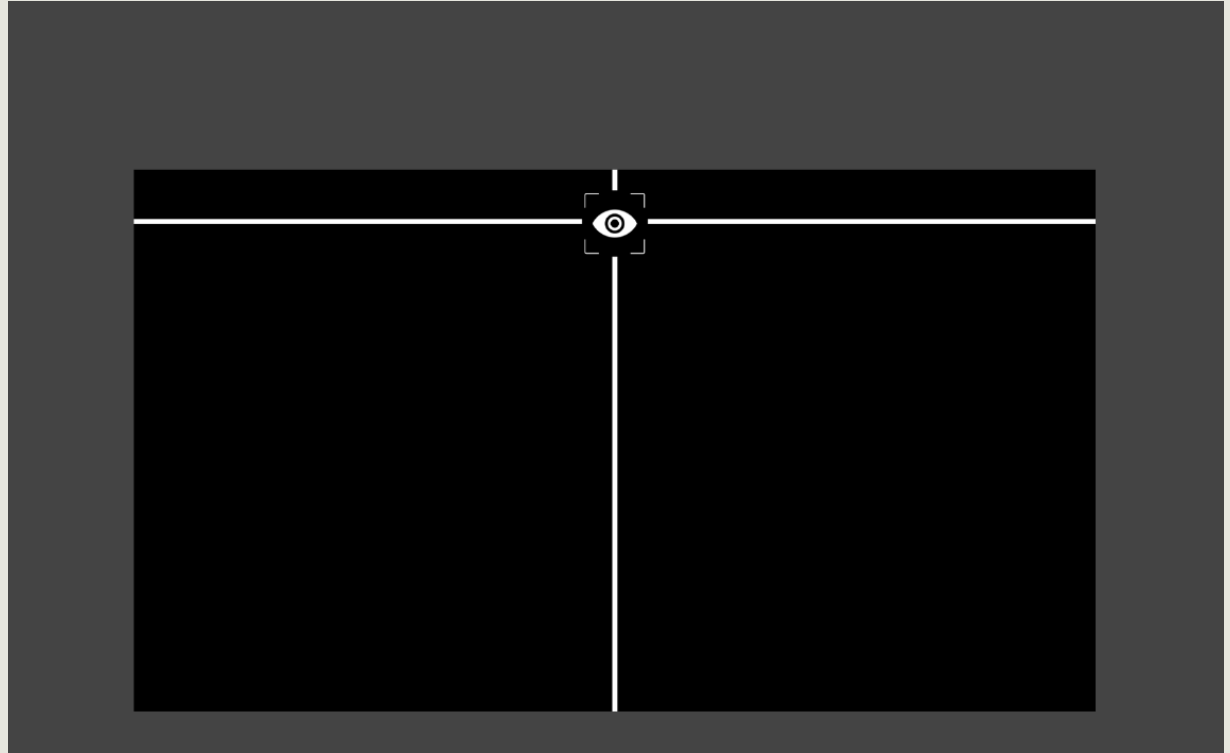


msi



Set up your desk with Posture Correction

With Eye-Q Check, you can self-assess your eye health while working long hours, preventing eye problems from escalating.



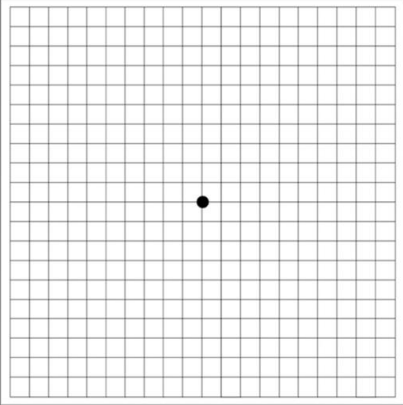
MSI Eye Care Technology: Eye-Q Check



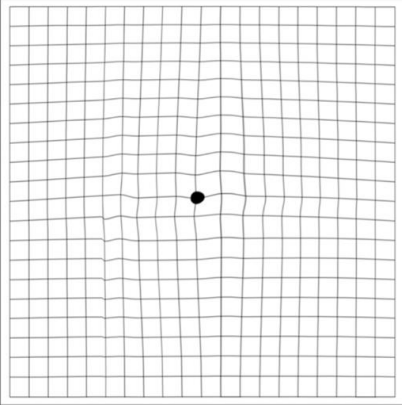
Detect early signs of retinal disease with Amsler Grid

Astigmatism self-test

Normal Vision

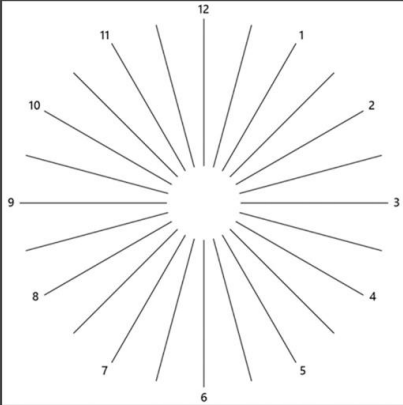


You might need to take a rest or consult a health professional

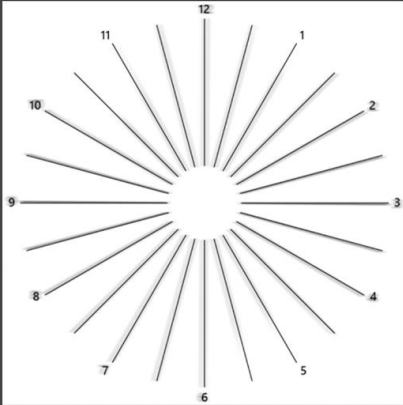


The Amsler Grid test consists of two square panels. The left panel, labeled 'Normal Vision', shows a perfectly square grid of 10x10 cells with a black dot in the center. The right panel, labeled 'You might need to take a rest or consult a health professional', shows the same grid but with a wavy, distorted appearance, indicating potential retinal issues.

Normal Vision



You might need to take a rest or consult a health professional



The Astigmatism self-test consists of two circular panels. The left panel, labeled 'Normal Vision', shows a central white circle with 12 radial lines extending to the edge, labeled 1 through 12. The right panel, labeled 'You might need to take a rest or consult a health professional', shows the same radial lines but with a noticeable blur or distortion, particularly in the lines that are not perfectly vertical or horizontal.

MSI Eye Care Technology: 100Hz & 1ms

Flawless Flow, No More Stutters.

Attend the smoothest online conference call with a 100Hz refresh rate and show the perfect advertising video to customers with a 100Hz refresh rate.

VESA's research shows that for 95% of users, 85Hz Refresh Rate has become a defacto standard for normal use that shows "flicker-free" images.



85Hz – While not a “video-friendly” rate, 85Hz has become a defacto standard for PC displays wishing to meet the strictest ergonomic requirements for a “flicker-free” image. At this rate, typical CRT-based computer display, under standard viewing conditions, will appear “flicker-free” to greater than 95% of the population.

Ergonomic Design: Tilt Adjustable



Adjust the suitable angle for the best working position with a tilt adjustable stand.

Ergonomic Design: Tool Less Design



Ergonomic design aims to enhance efficiency, comfort, and safety while reducing discomfort and the risk of injury.

A man and a woman in business attire are standing on a balcony, engaged in a conversation. The man is holding a smartphone. The background shows a city skyline with buildings. The text "Productivity & Connectivity" is overlaid in the center.

Productivity & Connectivity

Empower Productivity, Unleash Connectivity

PRO MP225V is the caring assistant that boosts your productivity.



VESA Mountable

The PRO MP225V supports the standard VESA mount. You can mount the Cubi Series to its back and make the PC completely invisible from your table.



Accessory Slot

With the accessory slot, you can easily store your phone in a convenient location, freeing up your hands and ensuring that your phone is always within sight and easy to access.

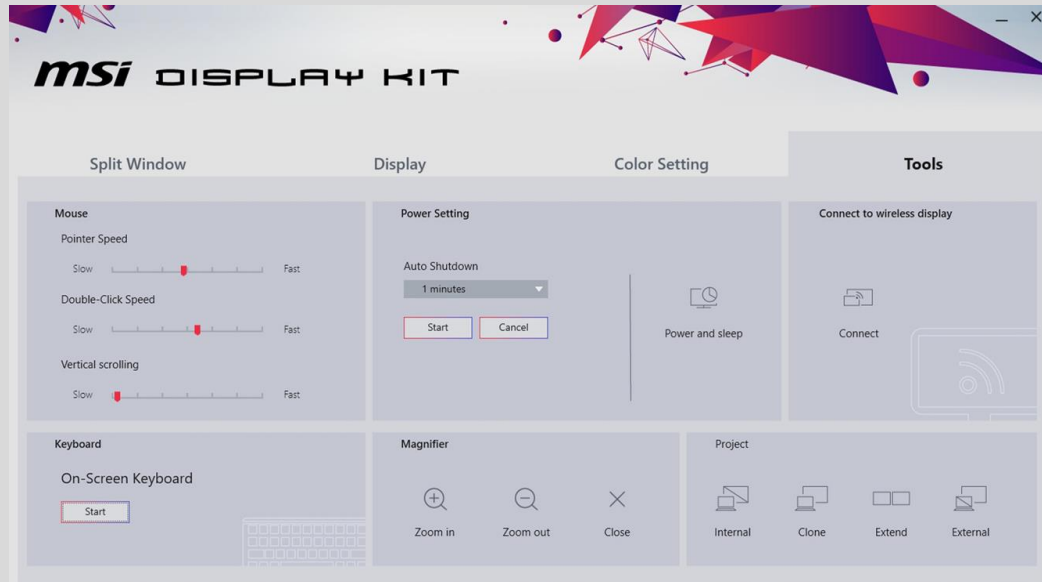


Complete I/O Ports

No problem at all if you'd like to work or learn with different devices. PRO MP225 series supports one HDMI and one D-Sub(VGA), it keeps the flexibility with dual sources for your multiple devices.

Simplicity At Your Fingertips

Display Kit App



Connect to
Wireless Display



Layout Setting



Auto-Shutdown



Zoom in/
out

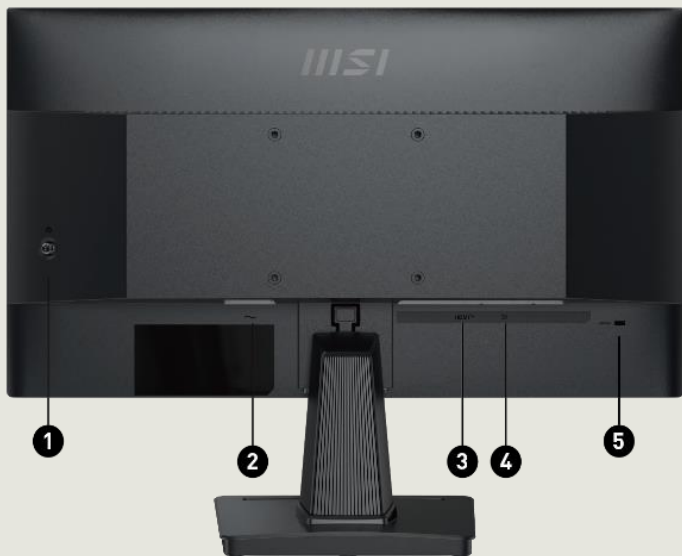


Project Mode

Make your personal color mode with your own preference, the MSI Display Kit helps you to setup those proper color modes for you, including gaming, cinema or eye saver mode.

PRO MP225V Specification

msi



1. 5-Way Navigator
2. 1x AC-in
3. 1x HDMI™ (1.4b)
4. 1x D-Sub (VGA)
5. Kensington Lock

| | |
|-----------------------------------|---|
| Type / Size | 21.45" |
| Active Display Area (mm) | 478.656 (H) x 260.28 (V) |
| Curvature | Flat |
| Panel Type | VA |
| Resolution | 1920 x 1080 (Full HD) |
| Pixel Pitch | 0.2493(H) x 0.241 (V) |
| Aspect Ratio | 16:9 |
| Brightness (nits) | 300 cd/m ² |
| Contrast Ratio | 4000:1 |
| Refresh Rate | 100Hz |
| Response Time | 1ms (MPRT) / 4ms (GTG) |
| View Angles | 178°(H) / 178°(V) |
| sRGB | 100% (CIE 1976) |
| Surface Treatment | Anti-glare |
| Display Colors | 1.07B |
| Color Bit | 10 bits (8 bits + FRC) |
| Video Interface | 1x HDMI™ 1.4b (FHD@100Hz) 1x D-Sub (VGA) |
| Audio Interface | NA |
| Speaker | NA |
| Power Type | Internal Power Board |
| Power Input | 100~240V, 50~60Hz |
| Adjustment (Tilt) | -5° ~ 20° |
| Kensington Lock | Yes |
| VESA Mounting | 100 x 100 mm |
| Dimension (W x D x H) | 492.9 x 182.4 x 377.8 mm (19.41 x 7.18 x 14.87 inch) |
| Weight (NW / GW) | 2.5 kg (5.51 lbs) / 4.3 kg (9.48 lbs) |
| Dimension (W x D x H) With Carton | 557 x 108 x 340 mm (21.93 x 4.25 x 13.39 inch) |
| Note | HDMI: 1920 x 1080 (Up to 100Hz) D-Sub (VGA): 1920 x 1080 (Up to 60Hz) Adaptive-Sync Support |



msi

THE LEAP TO SINGULARITY

