

CB+ Series CEILING BOXES



FSR

Metal Products Group



DESCRIPTION

The CB-22+ line of ceiling boxes has been reimagined with exciting new features. The “+” series ceiling boxes include integrated threaded rod mounts, lockable cover latch, larger mounting shelf, low voltage access plates with brushes, and a load rating that’s been increased to 100 pounds for the projector pole models.

The integrated mounting point allows use of threaded rod without additional hardware kits. Pole mount unit include decorative pole rail cover plates, and a solid door is available on all models to eliminate the need to cut ceiling tiles. The projector pole may be mounted in any of 3 predetermined positions and trimmed with the included plates, or if finer pole adjustment is needed, ceiling tile may be cut to size.

The streamlined access door and hinge allow for easier removal and installation of the door. The attached quick-disconnect safety cable prevents the cover door from detaching completely from the box. The new lockable latched access door provides security while allowing easy access to the equipment in the box. The CB-22S+ and CB-22SP+ models include the upgraded, low noise, temperature controlled variable speed fan and a load sensing, switched receptacle feature. As shipped, fan is only enabled when switched receptacles are in the “on” state. Directions are included to allow fan to run any time turn-on temperature is exceeded. A fan kit is available for installation in the CB-22+ and CB-22P+ models. The CB-22P+ pole mount support rail cover is provided with configurable plates that enable the projector position slot to be covered with matching white metal, providing an option for installers to eliminate cutting ceiling tiles. The pole mount rail on the CB-22P+ now supports projectors up to 100 pounds. All models come with two brush-lined low-voltage decorator-style wire entry plates located on the sides of the chassis to facilitate A/V and Data wiring requirements.

The CB-22S+ and CB-22SP+ are “Smart Enclosures” that feature built-in projector state auto-sense, which senses the power state of the projector to turn off remaining receptacles when the projector is turned off, thereby eliminating parasitic power consumption. It also includes two monitored unswitched outlets, one on the surface of the ceiling for projector power. The main switch/circuit breaker and four switched AC outlets are spaced to allow room for power

adapters. As an option, the receptacles can also be triggered by a low-voltage contact closure.

FEATURES

- Larger removable dual-tilting equipment shelf
- 2-RU dual-tilting shelf facilitates mounting & visibility of 2-RU patch panels
- Repositionable 2-RU rack rails
- Integrated threaded rod mounts
- Lockable access door with secured winged keyed Cam Lock
- Two low-voltage cabling access brush plates installed on all models
- A streamlined access door and hinge allow for effortless removal/installation of the door
- Quick disconnect safety cable prevents the cover door from detaching completely from the box
- Upgraded temperature-controlled variable speed low-noise fan kit (Factory-installed for models CB-22S+ and CB-22SP+)
- Pole mount rated to 100 lbs.
Shelf mount rated to 40 lbs.
- Optional decorative metal plates for pole rail cover and access door
- Pole Rail Cover allows for 3 configurable locations, using either ceiling tile or decorative metal plates

APPLICATIONS

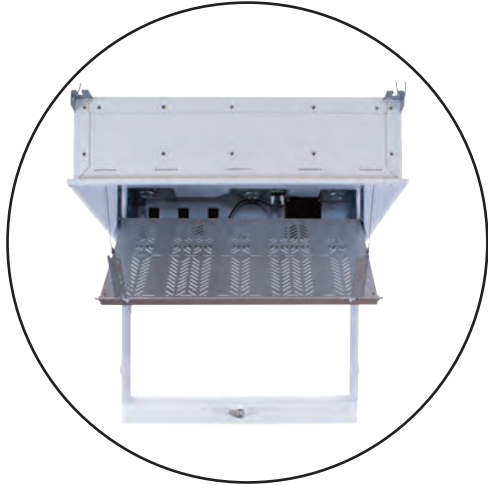
Made for ‘T’ Grid Drop Ceilings

- Conference centers
- Schools
- General Meeting Facilities
- Training Facilities
- Airports
- Museums

FSR Inc.

244 Bergen Boulevard, Woodland Park, NJ 07424
Phone: 973.998.2300 · Fax: 973.785.4207
Web: www.fsrinc.com · E-mail: sales@fsrinc.com
Toll Free: 1-800-332-FSR1

+ FEATURES



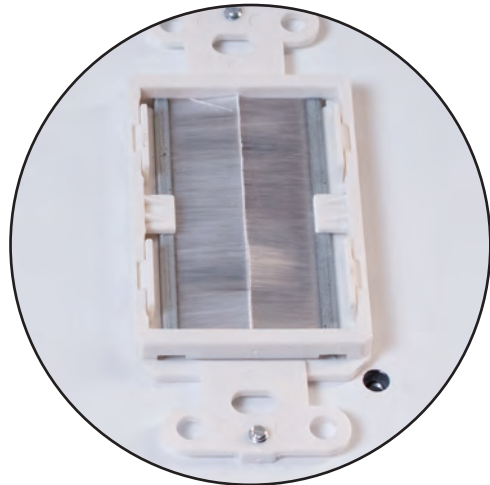
*2-RU removable
dual-tilting equipment shelf*



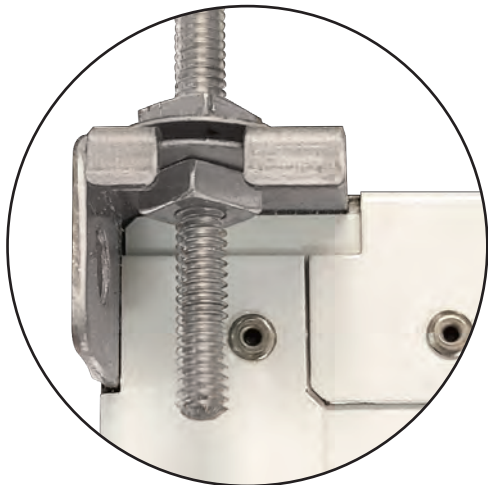
*Lockable access door with
secured winged keyed Cam Lock*



*Temperature-controlled variable speed fan kit
(Factory Installed in CB-22S+ and CB-22SP+)
Fan turns on at minimum speed at 29° C
Fan reaches maximum speed at 40° C
Cooling capacity is approximately 150 watts/
500 BTU/hr with a 10° temperature rise above
ambient.*



*Low-voltage cabling access
brush plates*

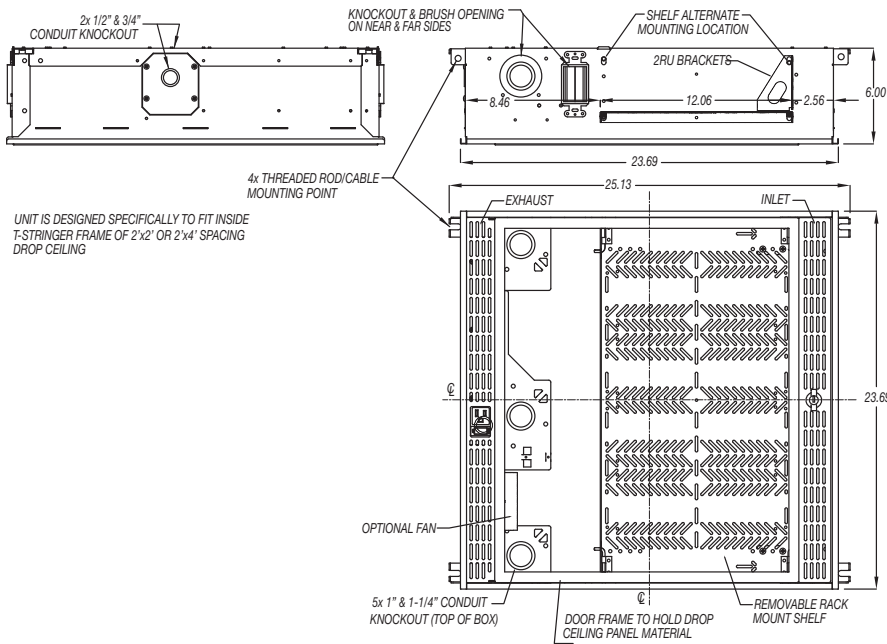


*Integrated threaded
rod mounts*



*Pole rail cover allows for
3 configurable locations*

CB-22+ SERIES DIMENSIONS

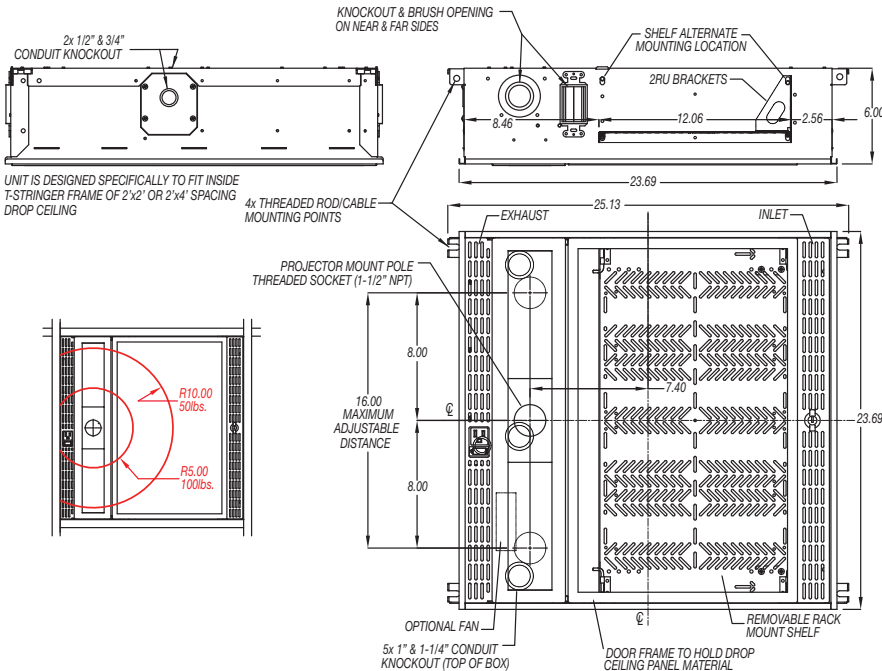


Product weight:
22.50 lbs

Shipping weight:
29.20 lbs.

NOTE: For use with the common "T" grid drop ceiling systems, not compatible with all drop ceiling systems

CB-22P+ SERIES DIMENSIONS



Product weight:
22.50 lbs

Shipping weight:
29.20 lbs.

NOTE: For use with the common "T" grid drop ceiling systems, not compatible with all drop ceiling systems

Doing a Large Project? Quantity Pricing Is Available.

AGENCY APPROVALS

PLENUM RATED: Conforms to UL 2043: UL Standard for Safety Fire Test for Heat and Visible Smoke Release for Discrete Products and Their Accessories Installed in Air-Handling Spaces.

SAFETY RATED: Conforms to: UL-62368-1: Information Technology Equipment - Safety and certified to CSA 22.2 62368-1: Safety of Information Technology Equipment.

TESTED AND CERTIFIED: All weight capacity specifications tested and certified to a minimum of a 5X safety factor by Tektronix, Inc. an independent testing laboratory.

CB-22+ SERIES ORDERING INFORMATION

ITEM	MODEL	DESCRIPTION
18624	CB-22FAN+	Fan Kit for use with CB-22 and CB-22P (Not used in CB-22S and CB-22SP)
18625	CB-22+	2'x2' Ceiling Box with 6 unswitched outlets
18626	CB-22P+	2'x2' Ceiling Box with pole mount and 6 unswitched outlets
18627	CB-22S+	2'x2' Ceiling Box with smart AC switch, 6 outlets, and 4 auto-switched (Factory Installed Fan Included)
18628	CB-22SP+	2'x2' Ceiling Box with pole mount, smart AC switch, 6 outlets, and 4 auto-switched (Factory Installed Fan Included)
17085	CB-MNT1	Mounting kit including four 100" cables and four KWIKLOCS™
18649	CB-22+SLDR	Decorative Solid Door
18650	CB-22P+SLDR	Decorative Solid Door For Use With Pole Mount Version
17287	SG-120HW	Surge Protective Device Type 1 (UL/cUL Listed)

CB-22+ SERIES ACCESSORIES



SG-120HW - Type 1
Surge Protective Device



244 Bergen Boulevard, Woodland Park, NJ 07424
 Phone: 973.998.2300 · Fax: 973.785.4207
 Web: www.fsrinc.com · E-mail: sales@fsrinc.com



Specifications are subject to change without notice.