

Dell E2725H Monitor

Teardown Instruction

Notes, cautions, and warnings

 **NOTE:** A NOTE indicates important information that helps you make better use of your product.

 **CAUTION:** A CAUTION indicates either potential damage to hardware or loss of data and tells you how to avoid the problem.

 **WARNING:** A WARNING indicates a potential for property damage, personal injury, or death.

Contents

| | |
|---|-----------|
| Safety Instructions | 3 |
| Before working inside your monitor | 3 |
| After working inside your monitor | 3 |
| Disassembly and reassembly | 4 |
| Recommended tools | 4 |
| Stand | 4 |
| Removing the stand | 4 |
| Installing the stand | 5 |
| VESA cover | 5 |
| Removing the VESA cover | 5 |
| Installing the VESA cover | 6 |
| Back cover | 6 |
| Removing the back cover | 7 |
| Installing the back cover | 7 |
| Keypad board | 8 |
| Removing the keypad board | 8 |
| Installing the keypad board | 10 |
| Metal frame | 11 |
| Removing the metal frame | 11 |
| Installing the metal frame | 13 |
| Main board and power board | 15 |
| Removing the main board and power board | 15 |
| Installing the main board and power board | 17 |
| Contacting Dell | 20 |

Safety Instructions

Use the following safety guidelines to protect your monitor from potential damage and to ensure your personal safety. Unless otherwise noted, each procedure included in this document assumes that you have read the safety information that shipped with your monitor.

NOTE: Before using the monitor, read the safety information that is shipped with your monitor and printed on the product. Keep the documentation at a secure location for future reference.

WARNING: Use of controls, adjustments or procedures other than those specified in this documentation may result in exposure to shock, electrical hazards and/or mechanical hazards.

CAUTION: The possible long-term effect of listening to audio at high volume through the headphones (on monitor that support it) may cause damage to your hearing ability.

- Place the monitor on a solid surface and handle it carefully. The screen is fragile and can be damaged if dropped or hit with a sharp object.
- Ensure that your monitor is electrically rated to operate with the AC power available in your location.
- Keep the monitor in room temperature. Excessive cold or hot conditions can have an adverse effect on the liquid crystal of the display.
- Connect the power cable from the monitor to a wall outlet that is near and accessible. See Connecting the cables.
- Do not place and use the monitor on a wet surface or near water.
- Do not subject the monitor to severe vibration or high impact conditions. For example, do not place the monitor inside a car trunk.
- Unplug the monitor when it is going to be left unused for an extended period.
- To avoid electric shock, do not attempt to remove any cover or touch the inside of the monitor.
- Read these instructions carefully. Keep this document for future reference. Follow all warnings and instructions marked on product.
- Certain monitors can be wall mounted using the VESA mount that is sold separately. Ensure to use the correct VESA specifications as mentioned in the wall mounting section of the User's Guide.

For information on safety instructions, see the Safety, Environmental and Regulatory Information (SERI) document that is shipped with your monitor.

Before working inside your monitor

Steps

1. Save and close all open files and exit all open applications.
 2. Turn off your monitor.
 3. Disconnect your monitor and all attached devices from their electrical outlets.
 4. Disconnect all attached network devices and peripherals, such as keyboard, mouse, and dock from your monitor
- CAUTION:** To disconnect a network cable, first unplug the cable from your monitor and then unplug the cable from the network device.
5. Remove any media card and optical disc from your monitor, if applicable.

After working inside your monitor

CAUTION: Leaving stray or loose screws inside your monitor may severely damage your monitor. Protecting Against Electrostatic Discharge

Steps

1. Replace all screws and ensure that no stray screws remain inside your monitor..
2. Connect any external devices, peripherals, or cables you removed before working on your monitor.
3. Replace any media cards, discs, or any other parts that you removed before working on your monitor.
4. Connect your monitor and all attached devices to their electrical outlets.
5. Turn on your monitor.

Disassembly and reassembly

NOTE:

This “Disassembly and Assembly Procedures” is for EMEA only, not for other regions. Please note that Dell will deem warranty void if any disassembly is done on the monitors.

Recommended tools

List the type and size of the tools that would typically can be used to disassemble the product to a point where components and materials requiring selective treatment can be removed.

Tool Description:

- Screwdriver (Phillip-head, Hexagonal head)
- Penknife

Stand

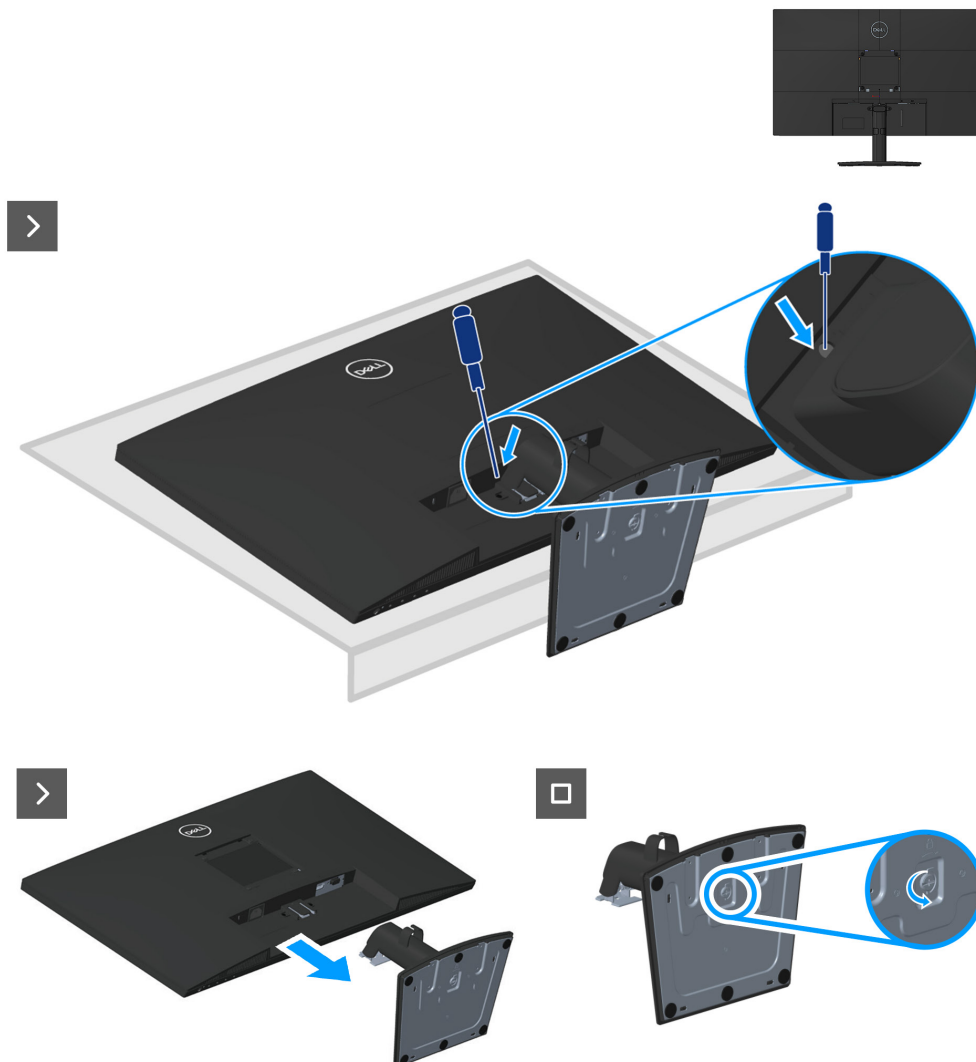
Removing the stand

Prerequisites

1. Follow the procedure in [Before working inside your monitor](#).

Steps

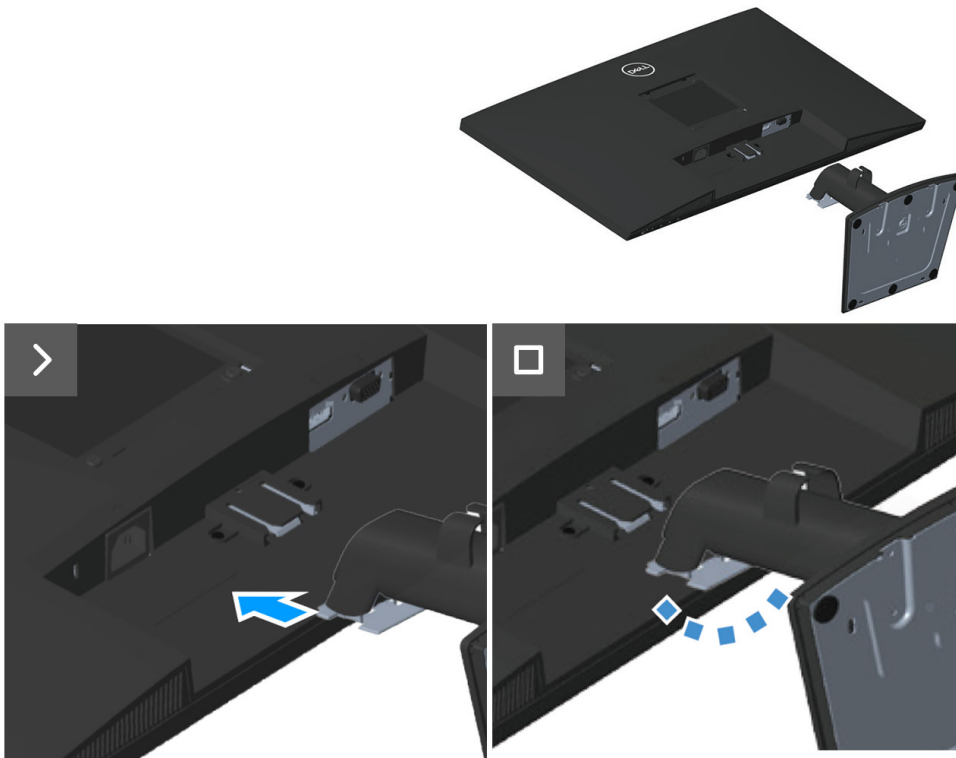
1. Place the monitor on a soft cloth or cushion at the edge of the desk.
2. Using a long screwdriver press the release button.
3. While keeping the release button pressed, pull the stand out.



Installing the stand

Steps

1. Slide the tabs on the stand assembly into the slots on the monitor and press the stand assembly down to snap it into place.



Next steps

1. Follow the procedure in [After working inside your monitor.](#)

VESA cover

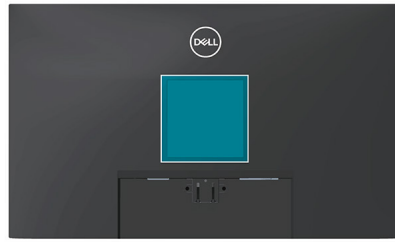
Removing the VESA cover

Prerequisites

1. Follow the procedure in [Before working inside your monitor.](#)
2. [Removing the stand.](#)

Steps

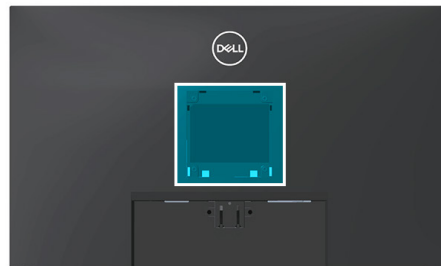
1. Press the dimple on the VESA cover to release it from the back of the display.



Installing the VESA cover

Steps

1. Press the VESA cover to install it to the back cover.



Next steps

1. [Installing the stand.](#)
2. Follow the procedure in [After working inside your monitor.](#)

Back cover

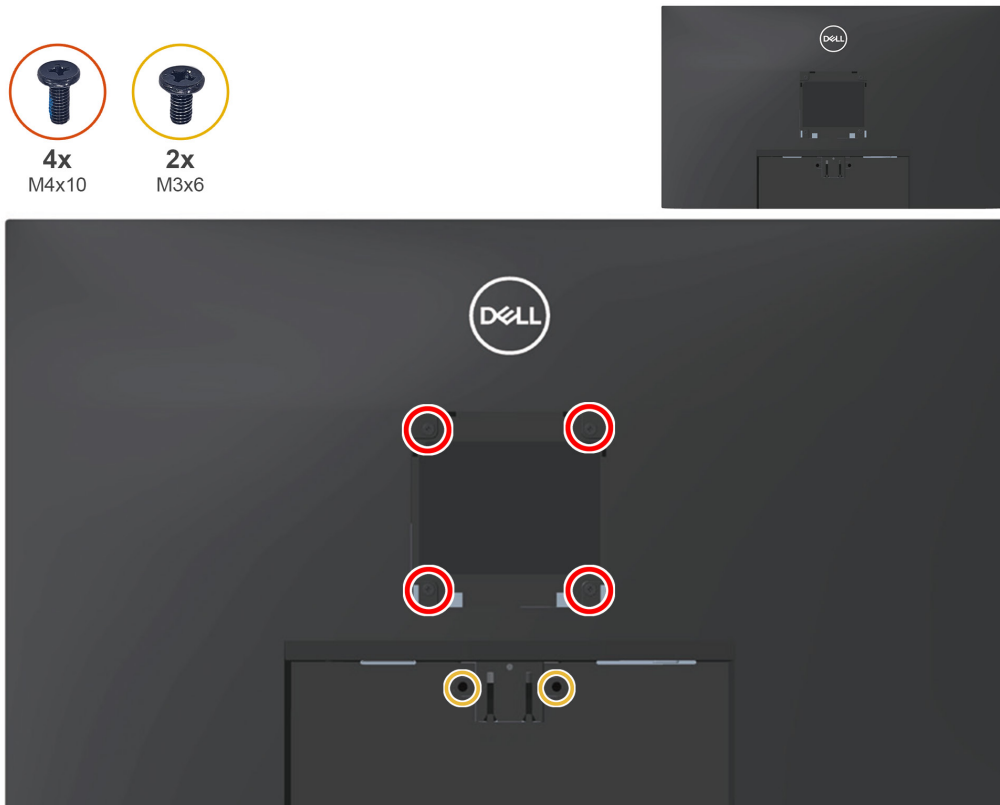
Removing the back cover

Prerequisites

1. Follow the procedure in [Before working inside your monitor.](#)
2. [Removing the stand.](#)
3. [Removing the VESA cover.](#)

Steps

1. Remove four screws (M4x10) that secure the back cover to the chassis assembly.
2. Remove two screws (M3x6) that secure the back cover to the chassis assembly.



3. Using the plastic scribe, pry the back cover starting from the bottom edge of the monitor.



4. Lift and remove the back cover away from the monitor.

Installing the back cover

Steps

1. Place and snap the back cover into place the chassis assembly.

i NOTE: Align the screw holes on the back cover with the screw holes on the chassis assembly before applying slight pressure to the back cover.

2. Replace four screws (M4x10) to secure the back cover to the monitor.

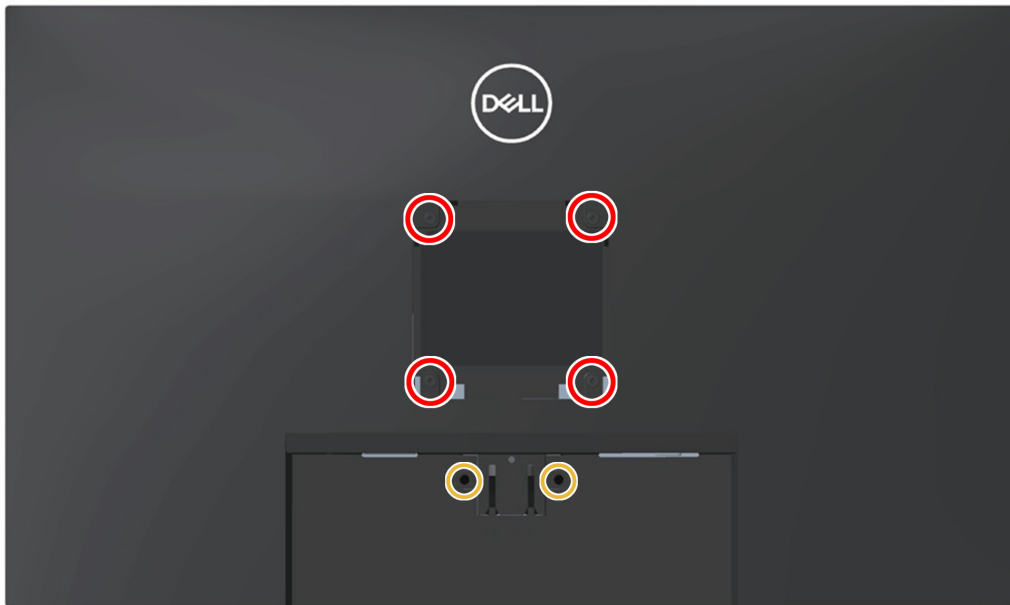
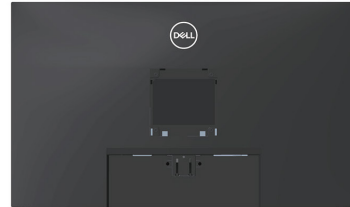
3. Replace two screws (M3x6) to secure the back cover to the monitor.



4x
M4x10



2x
M3x6



Next steps

1. [Installing the VESA cover.](#)

2. [Installing the stand.](#)

3. Follow the procedure in [After working inside your monitor.](#)

Keypad board

Removing the keypad board

Prerequisites

1. Follow the procedure in [Before working inside your monitor.](#)

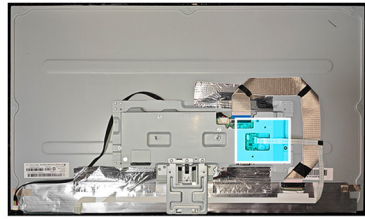
2. [Removing the stand.](#)

3. [Removing the VESA cover.](#)

4. [Removing the back cover.](#)

Steps

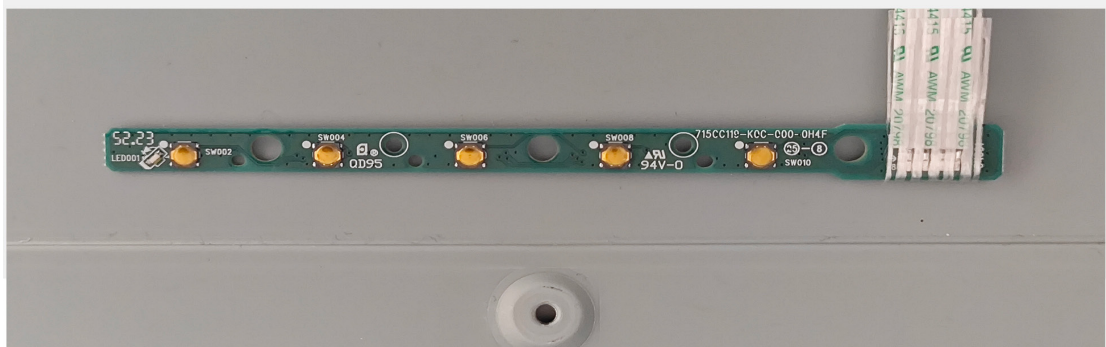
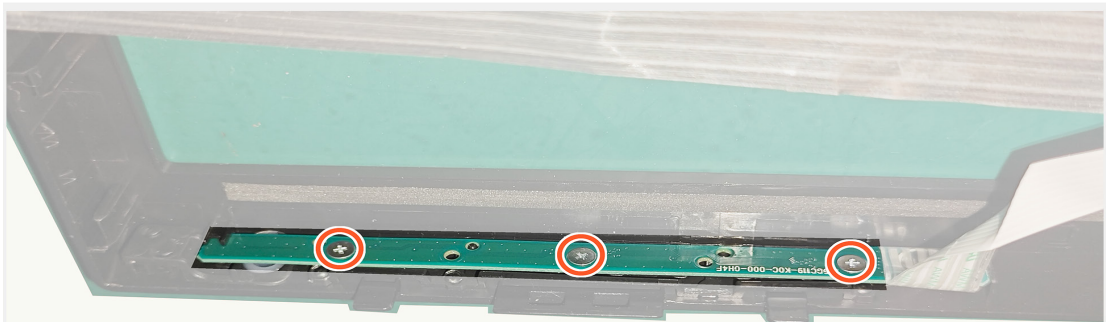
1. Disconnect keypad board cable from the connector on the main board.



2. Remove three screws (M2x2) on the keypad board.



3x
M2x2



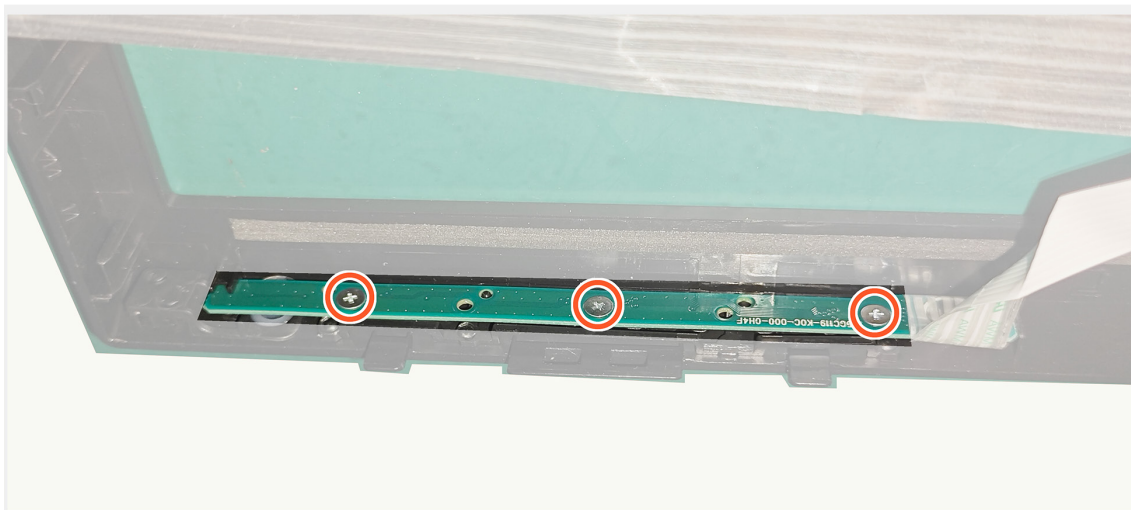
Installing the keypad board

Steps

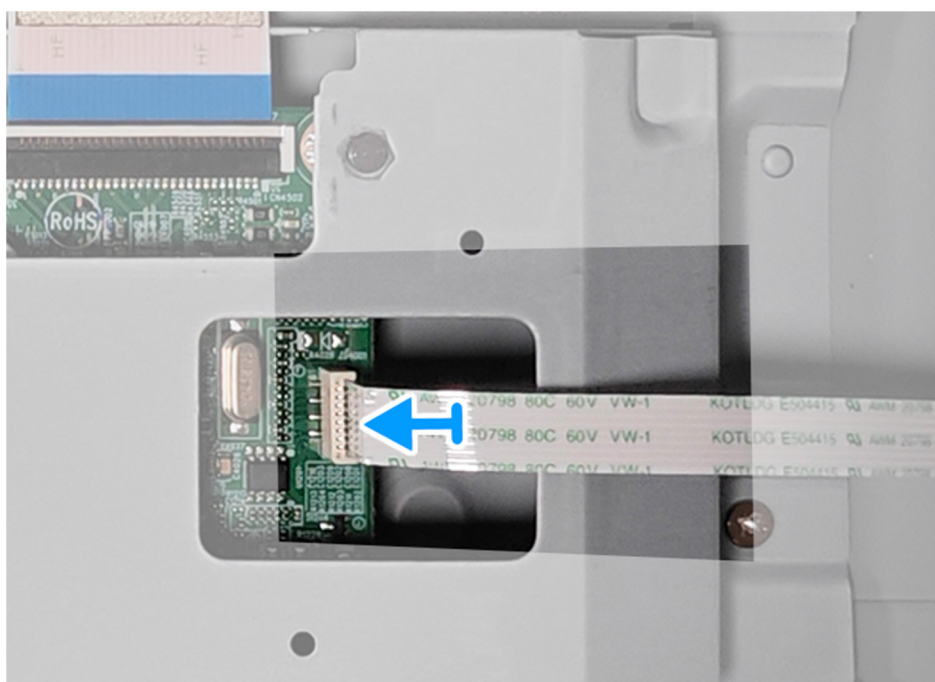
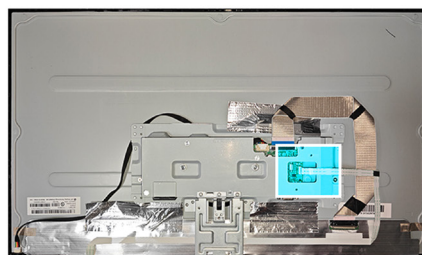
1. Replace three screws (M2x2) to secure the keypad boardr to the monitor.



3x
M2x2



1. Connect keypad board cable to the connector on the main board.



Next steps

1. [Installing the back cover.](#)
2. Follow the procedure in [After working inside your monitor.](#)

Metal frame

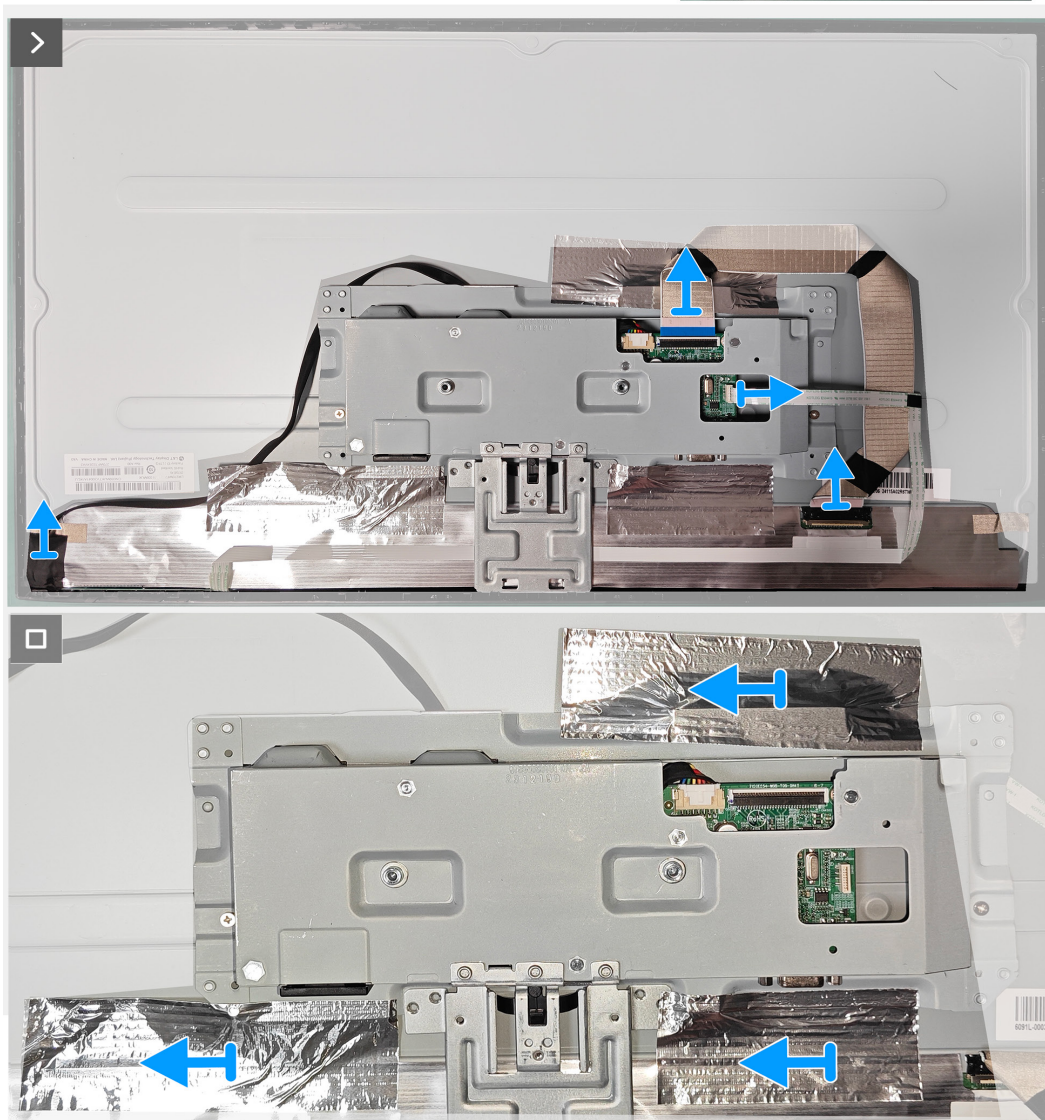
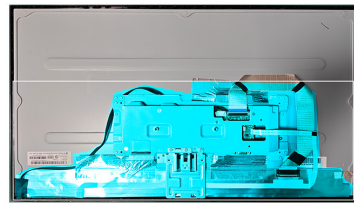
Removing the metal frame

Prerequisites

1. Follow the procedure in [Before working inside your monitor.](#)
2. [Removing the stand.](#)
3. [Removing the VESA cover.](#)
4. [Removing the back cover.](#)

Steps

1. Disconnect three cables on the connector of the panel and main board and remove three tapes on metal frame.



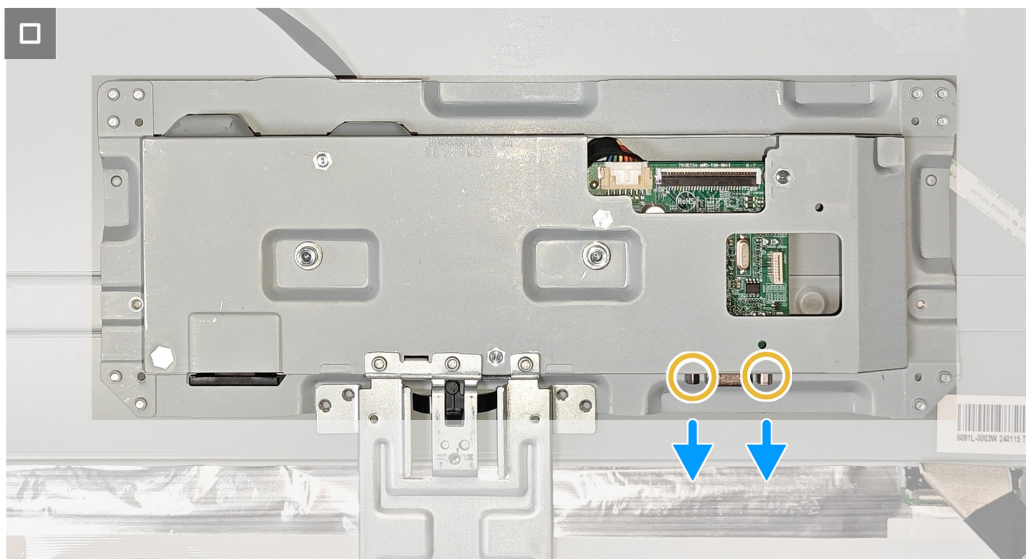
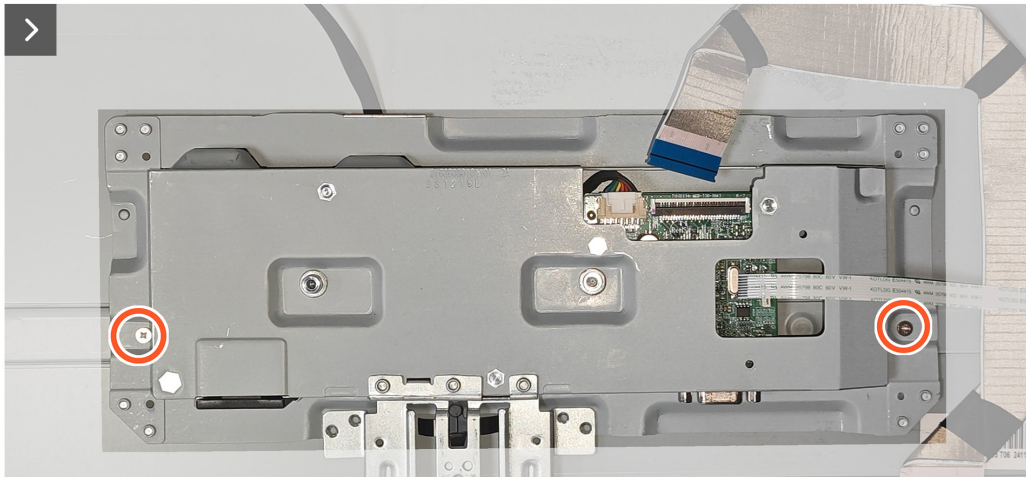
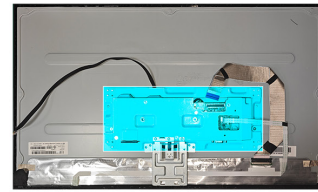
2. Remove two screws (M3x2.5) on the two sides of metal frame.
3. Remove two screws (4-40unc) on the VGA port of metal frame.



2x
M3x2.5



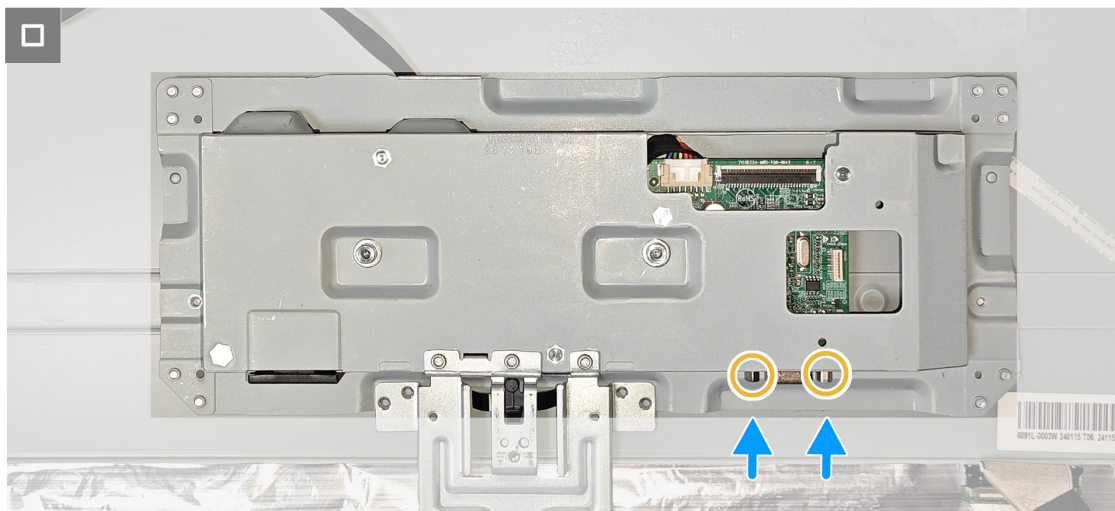
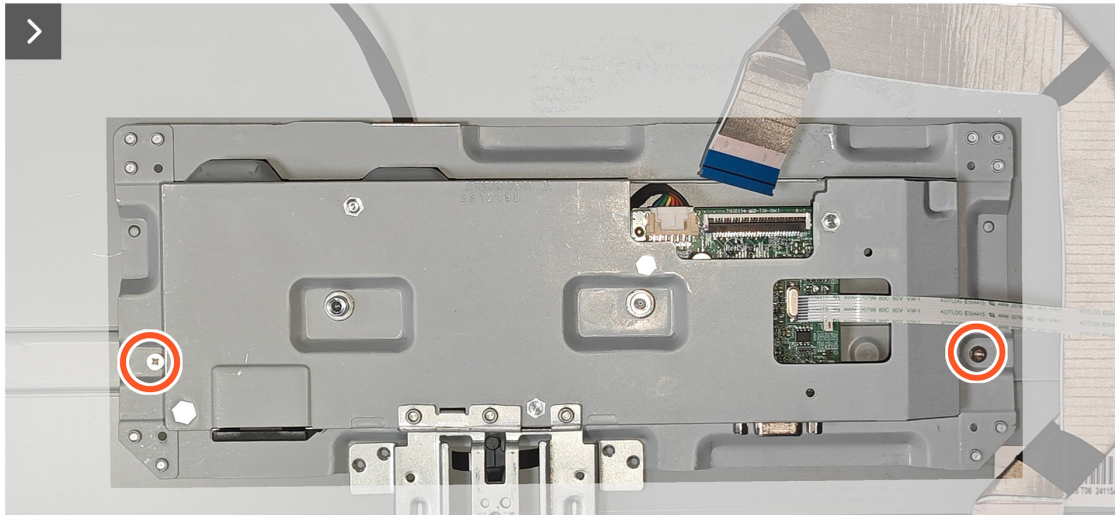
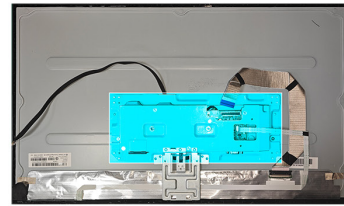
2x
4-40unc



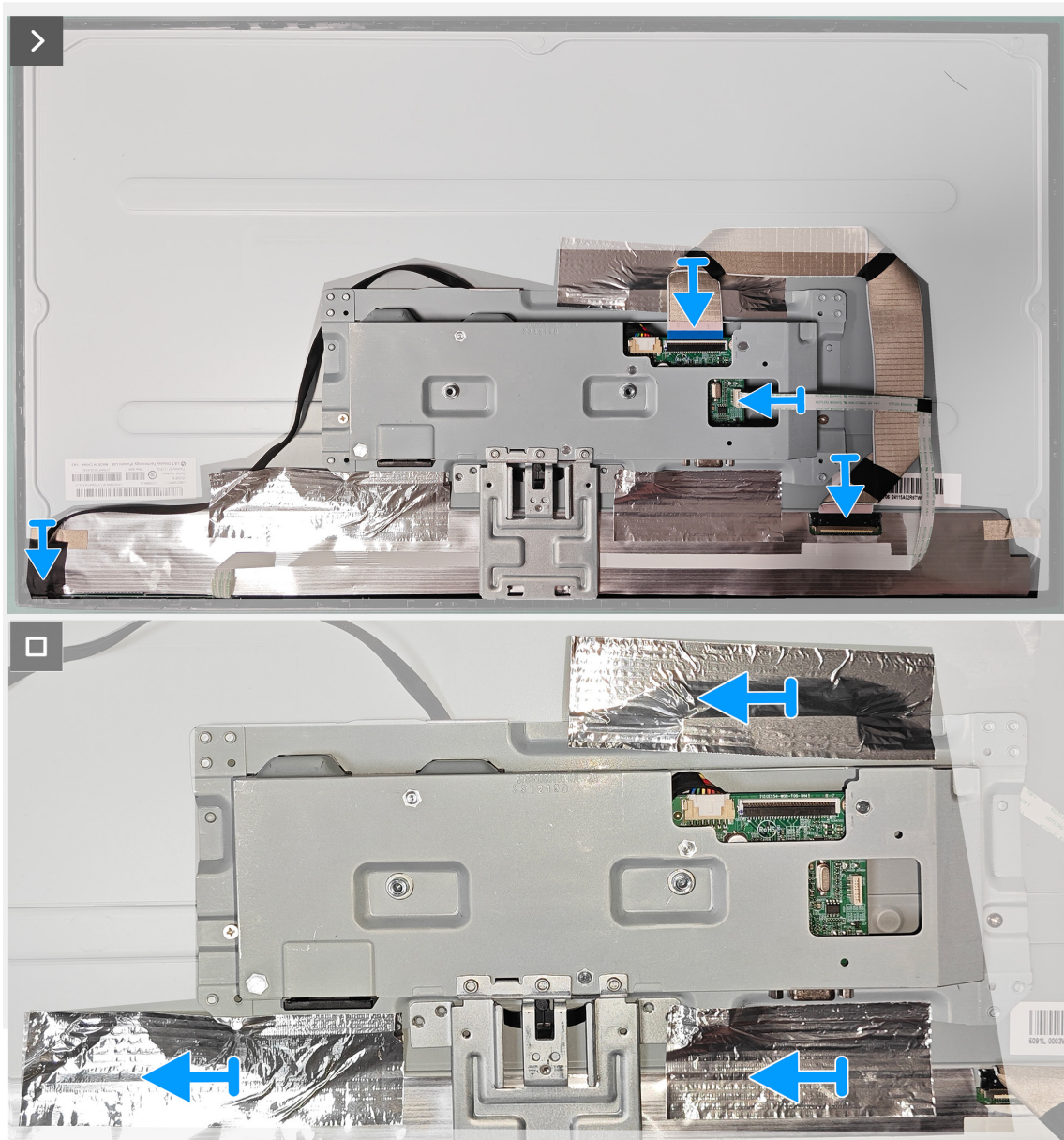
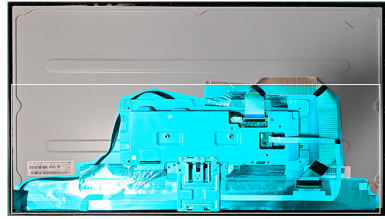
Installing the metal frame

Steps

1. Replace two screws (M3x2.5) on the two sides of metal frame.
2. Replace two screws (4-40unc) on the VGA port of metal frame.



2. Replace three tapes on metal frame and Connect three cables to the connector on the panel and main board.



Next steps

1. [Installing the back cover.](#)
2. Follow the procedure in [After working inside your monitor.](#)

Main board and power board

Removing the main board and power board

Prerequisites

1. Follow the procedure in [Before working inside your monitor.](#)
2. [Removing the stand.](#)
3. [Removing the VESA cover.](#)

- 4. Removing the back cover.
- 5. Removing the metal frame.

Steps

- 1. Remove the mylar on the power board.



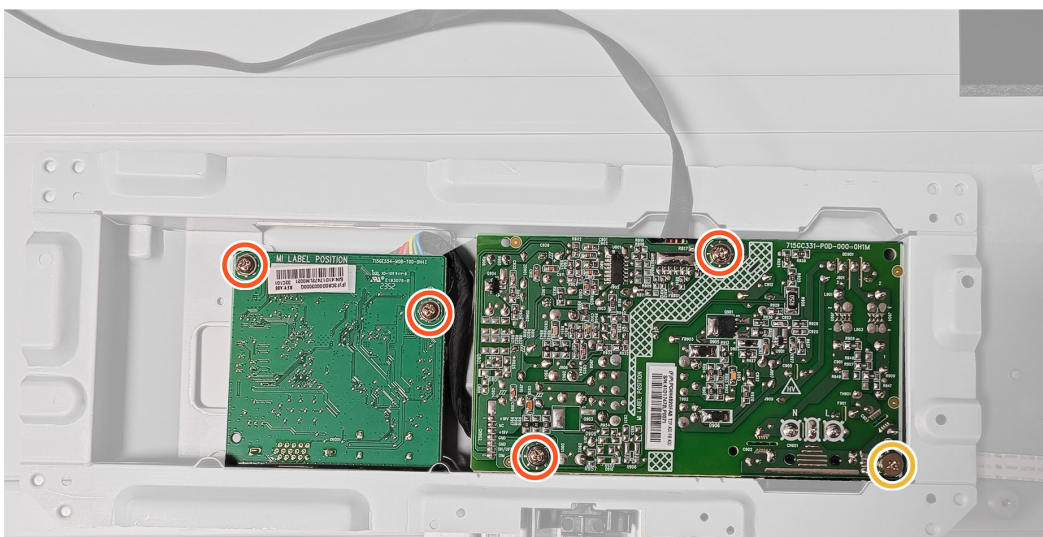
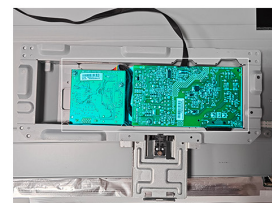
- 3. Remove four screws (D3x7) and one screw (M4x8) on the main board and power board.



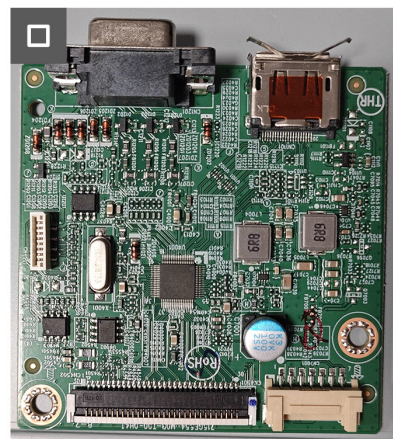
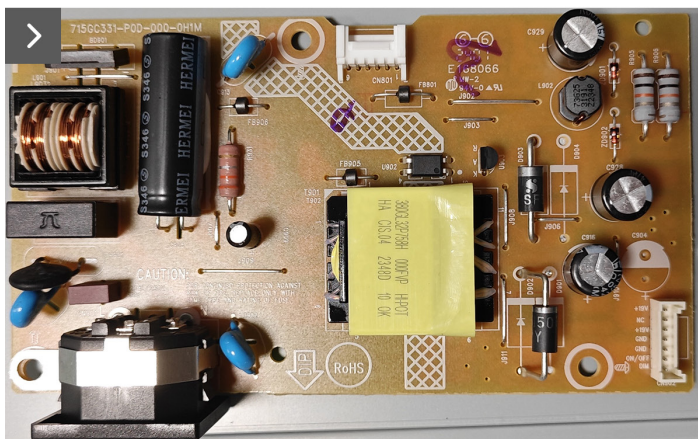
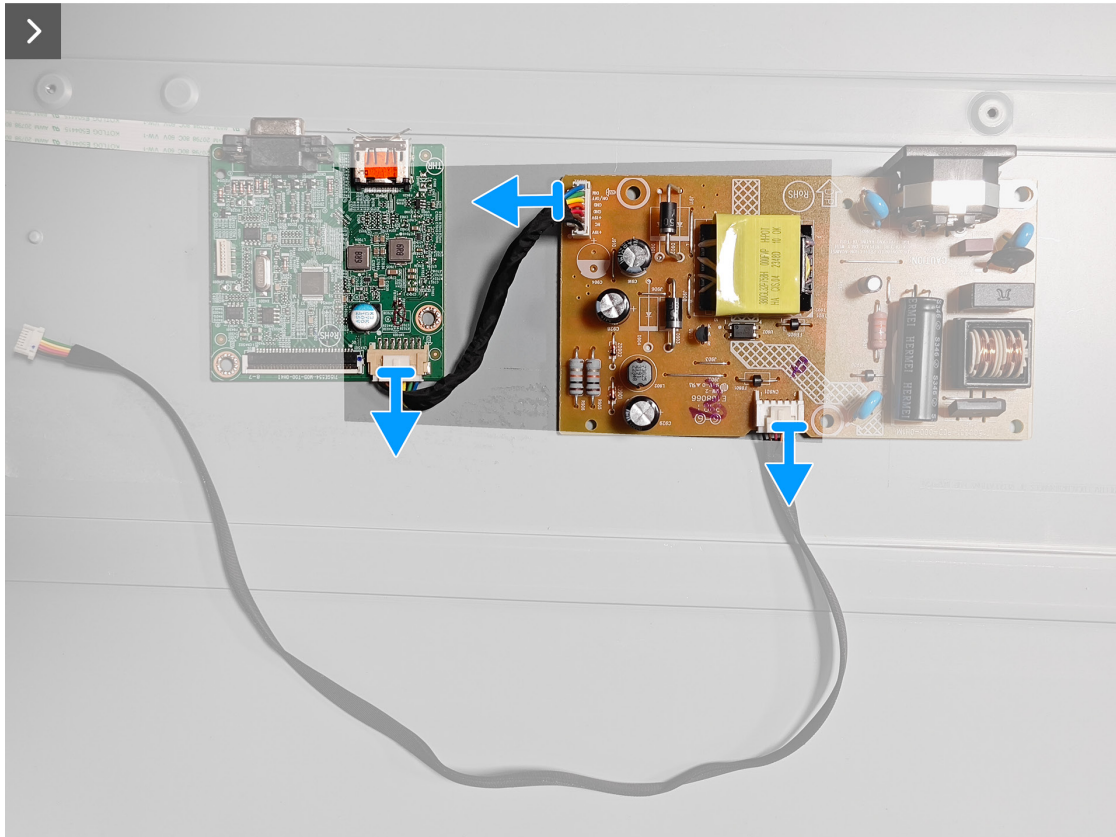
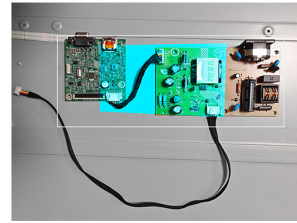
4x
D3x7



1x
M4x8



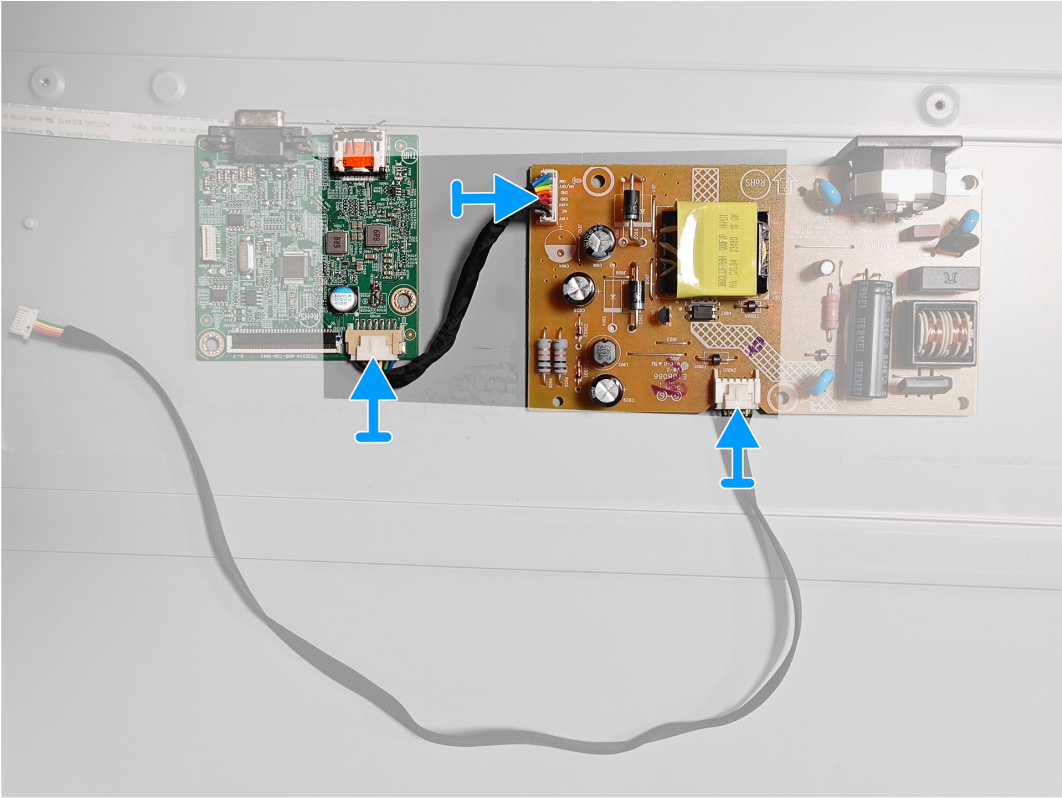
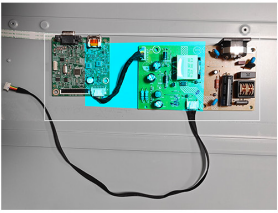
3. Disconnect two cables from the connector on the main board and power board.



Installing the main board and power board

Steps

1. Connect two cables to the connector on the main board and power board.



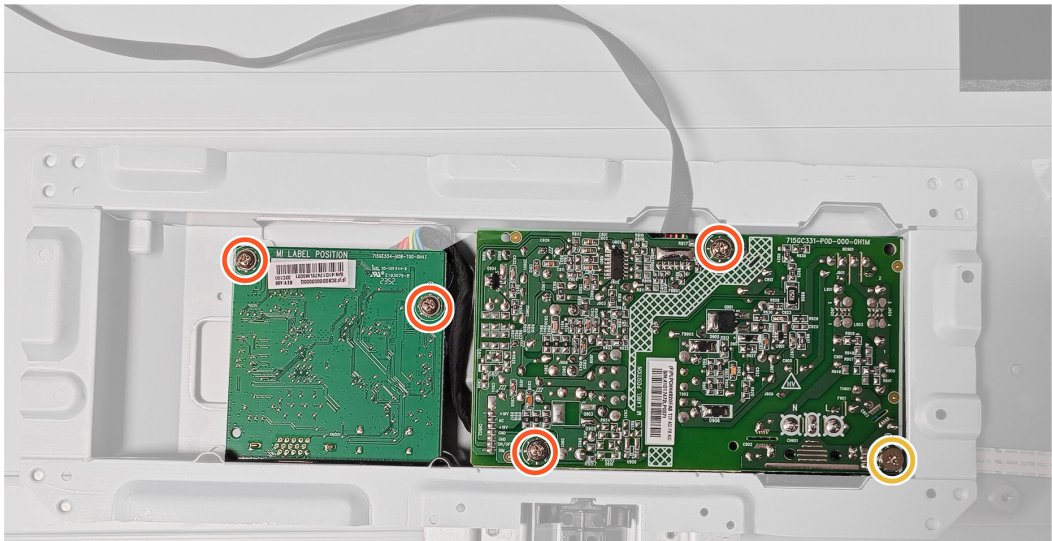
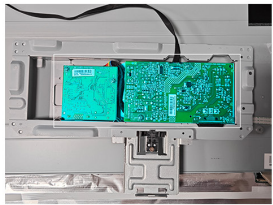
3. Replace four screws (D3x7) and one screw (M4x8) on the main board and power board.



4x
D3x7



1x
M4x8



Next steps

1. [Installing the metal frame.](#)
2. Follow the procedure in [After working inside your monitor.](#)

Contacting Dell

To contact Dell for sales, technical support, or customer service issues, see www.dell.com/contactdell.

- ① **NOTE:** Availability varies by country, region, or product, and some services may not be available in your country.
- ① **NOTE:** If you do not have an active Internet connection, you can find contact information about your purchase invoice, packing slip, bill, or Dell product catalog.