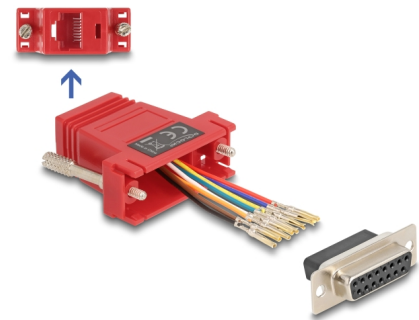


Delock D-Sub 15 pin female to RJ45 female Assembly Kit red

Description

This adapter by Delock can be used to expand a serial interface by using an optional Cat.5 / 5e / 6 cable. Thereby one can set the pin assignment individually. Just plug the cable end into the desired hole of the connector and let it lock into the housing.



Item no. 67112

EAN: 4043619671120

Country of origin: China

Package: Zip poly bag

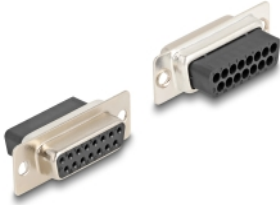
Technical details

- Connectors:
 - 1 x serial D-Sub 15 pin female
 - 1 x RJ45 jack
- RJ45 interface assigned with 8 pins, serial interface individually assignable
- Serial female port with screws
- Colour: red
- Dimensions (LxWxH): ca. 40 x 23 x 16 mm

Package content

- Adapter

Images



Interface

Connector 1:	1 x D-Sub 15 pin female
Connector 2:	1 x RJ45 jack

Physical characteristics

Length:	40 mm
Width:	23 mm
Height:	16 mm
Colour:	red