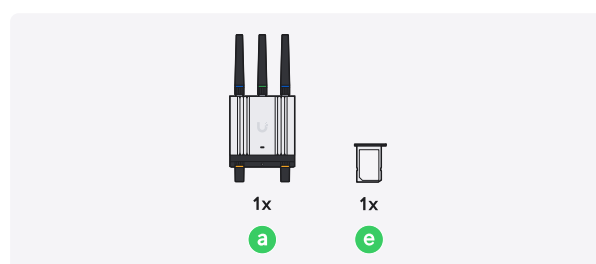
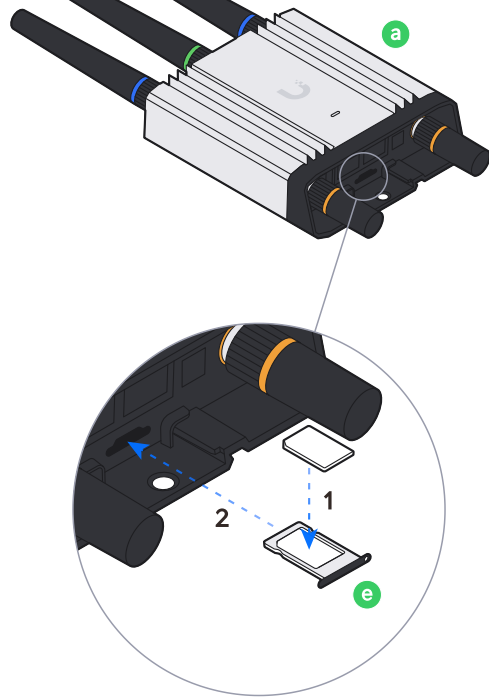
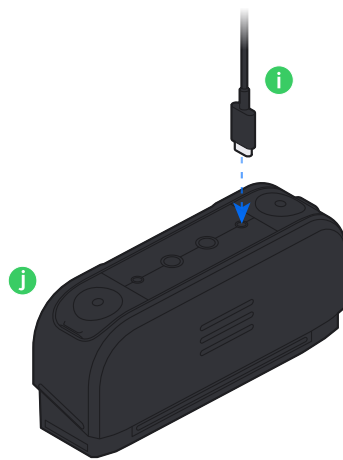
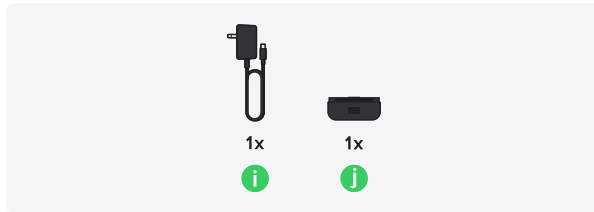


1

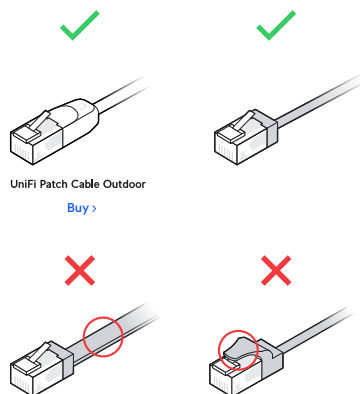




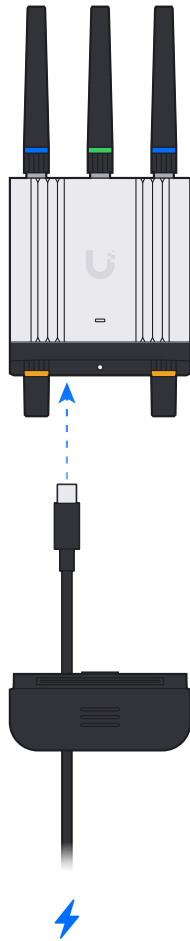
2



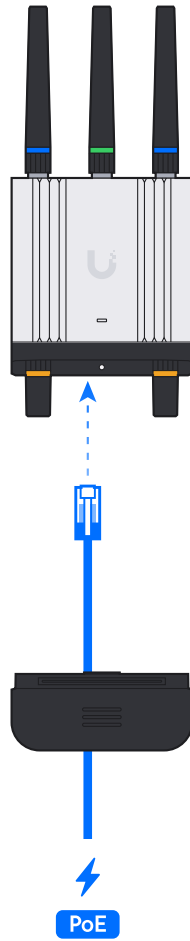
3



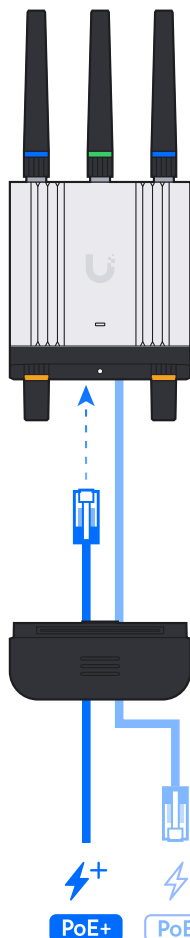
A



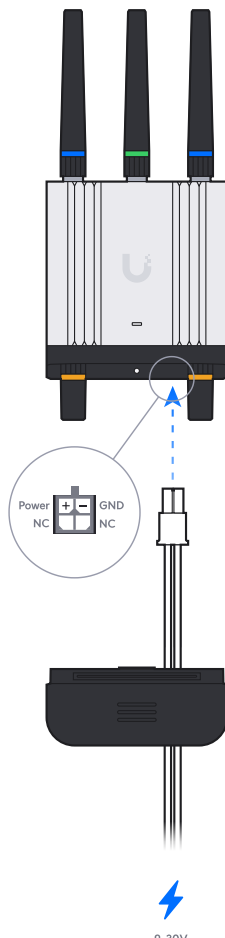
B



C

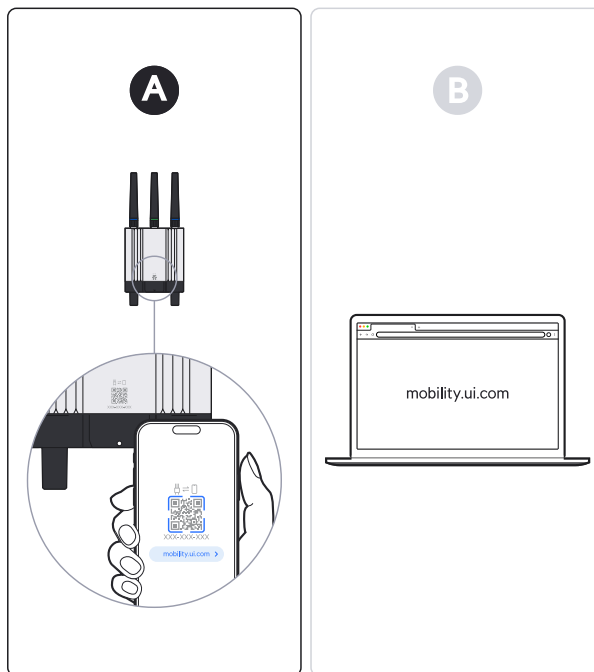


D

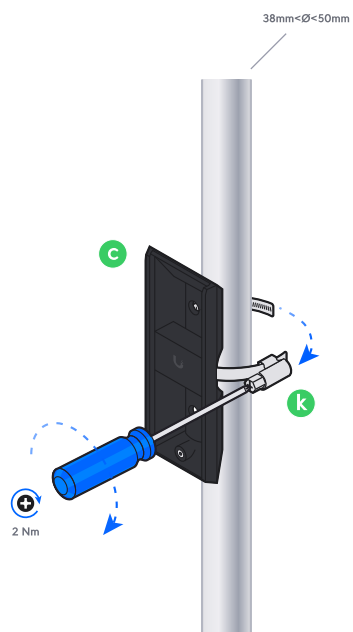
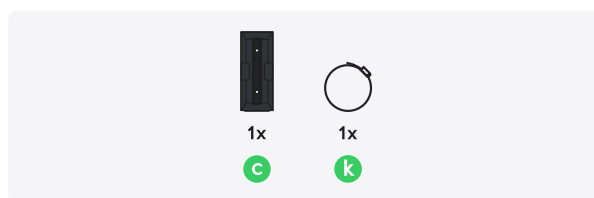


Power on and initialize (up to 2.5 min).

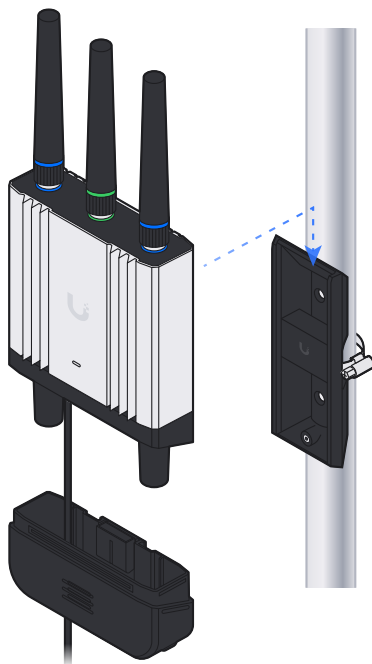
4



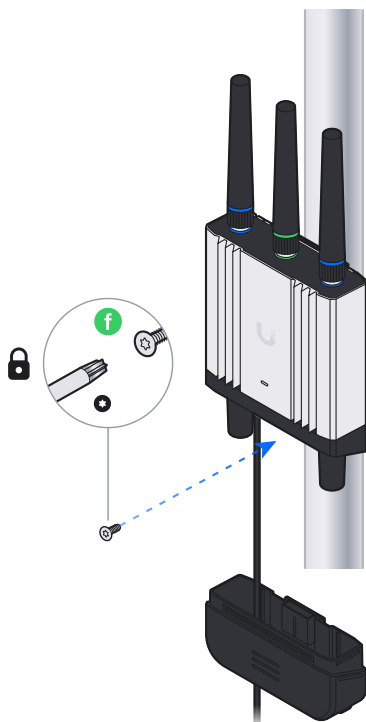
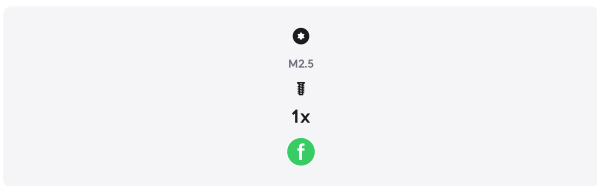
5



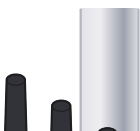
6

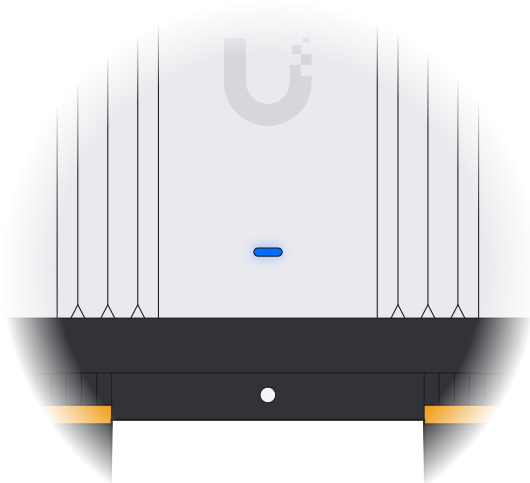
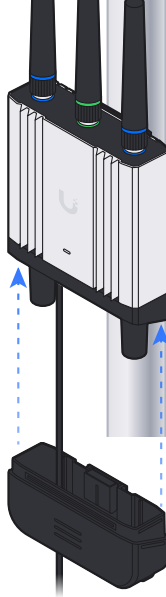






7



8

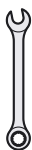




	Steady White	Device ready for setup.
	Steady Blue	Setup successful. Continue at mobility.ui.com .
	Flashing White	Unable to activate SIM. Check SIM PIN and APN.
	Flashing Blue	Unable to connect to the LTE network. Relocate the device or contact your ISP.

For more details please visit mobility.ui.com/doc/led.

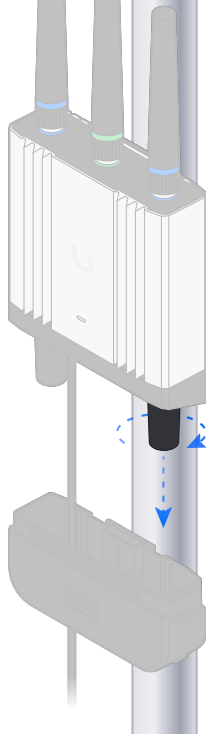
8mm



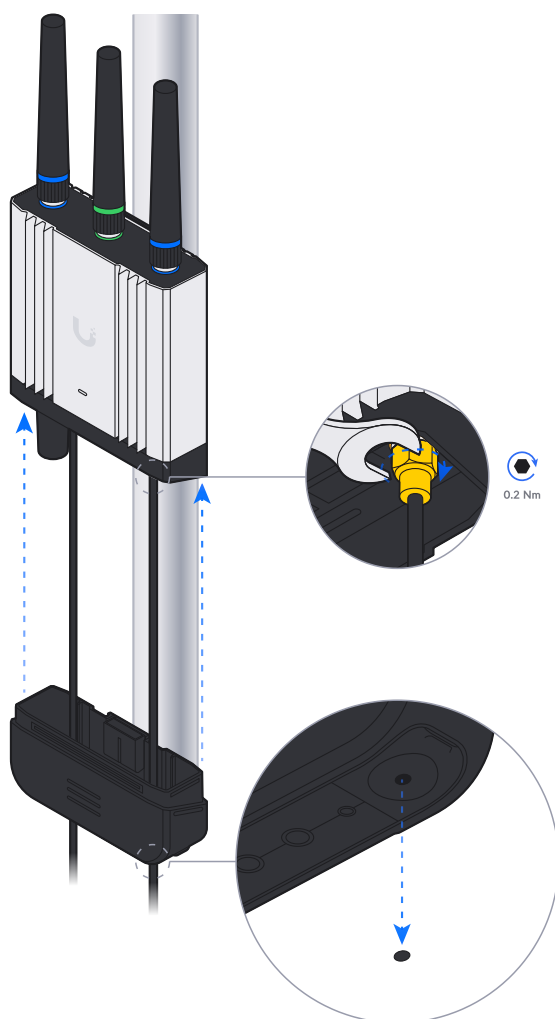
External WiFi Antenna
(RP-SMA Male Type)

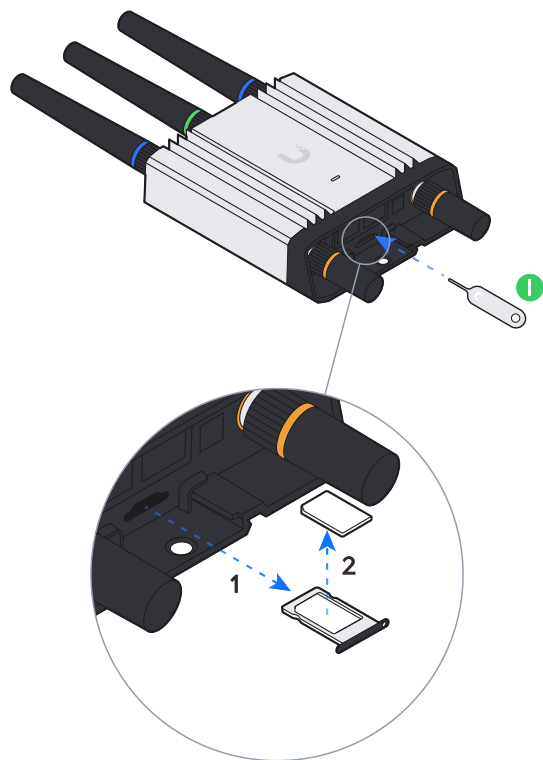


1

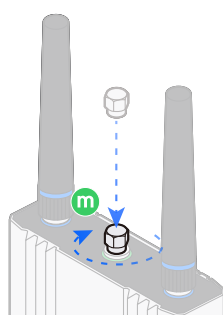
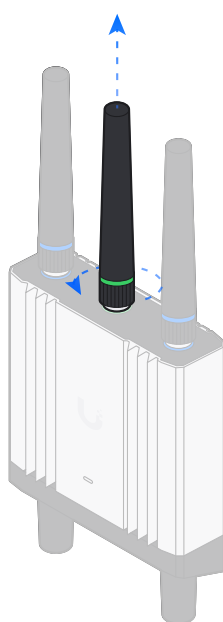


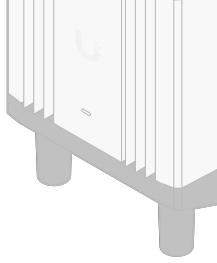
2





1x
m





If you need further assistance, visit our [Help Center](#) or contact [Ubiquiti Support](#).

©2024 Ubiquiti Inc. All rights reserved. Ubiquiti, the Ubiquiti logo, and UniFi are trademarks or registered trademarks of Ubiquiti Inc. in the United States and in other countries.