

*msi*

# PRO MP245PG Infokit

V1



THE LEAP TO  
SINGULARITY

# PRO MP245PG

Business & Productivity Monitor

IIISII





A person in a light blue shirt and dark pants stands on a jagged rock peak, looking out over a vast mountain range under a golden sunset sky. The person is holding a bag and a briefcase. The background shows layers of mountains fading into the distance.

## Embrace Sustainability with the Eco-Friendly PRO MP245PG Monitor

Explore our Eco-friendly monitor PRO MP245PG, meticulously designed to meet stringent environmental standards, ensuring a cleaner, greener world. Featuring cutting-edge enhancements like EyesErgo for user well-being and a silky-smooth 100Hz refresh rate, elevate your experience while making a sustainable choice.



### ECO-Friendly

Our Products meet rigorous environmental standards and promote sustainability

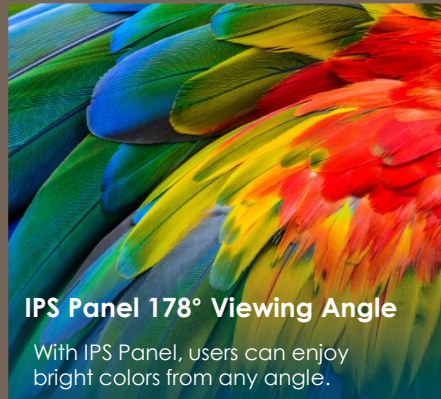
### 100Hz High Refresh Rate

Flawless Flow, No more Stutters. Provides smoother and more responsive visuals.



### EyesErgo

MSI EyesErgo Tech promotes eye health and comfort, enhancing user well-being.



### IPS Panel 178° Viewing Angle

With IPS Panel, users can enjoy bright colors from any angle.



### Productivity and Connectivity

Boost productivity with user-friendly features.



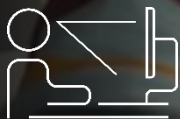


## EyesErgo Tech, Your Health Protector

Optimize well-being and work efficiency with our display's ergonomic design and eye care features. Enhanced comfort and promote healthier productivity.



Eye Care



Ergonomic

# MSI Eye Care Technology: Eye Care Panel



TUV Certified Anti-Flicker, Less Blue Light function reduces users' eye fatigue when working for long hours.

Anti-Glare panel minimizes the reflection and makes users view clearly easily.



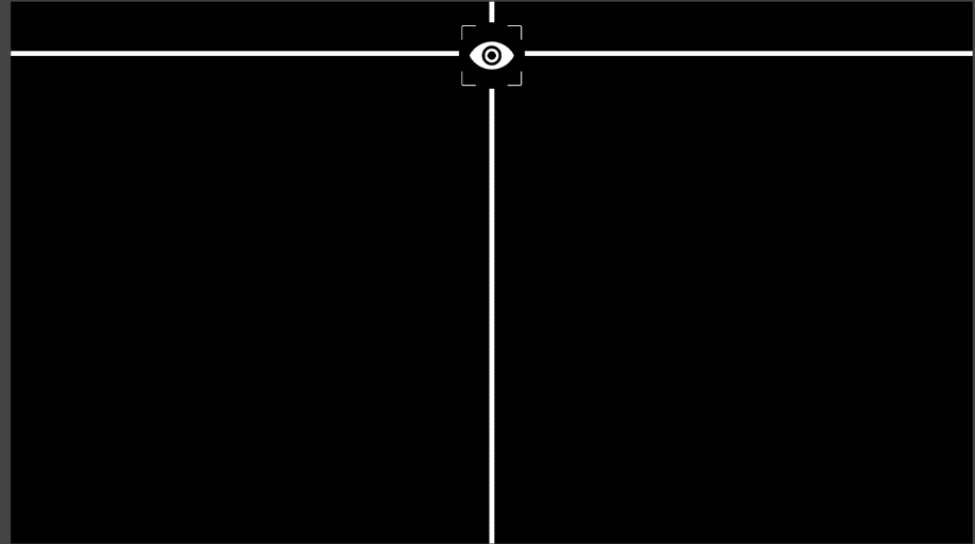
## MSI Eye Care Technology: Eye-Q Check



With Eye-Q Check, you can self-assess your eye health while working long hours, preventing eye problems from escalating.

### Posture Correction

MSI recommends you to sit up straight and adjust your eye position to one-ninth of the top edge of the screen. A good sitting posture can effectively prevent neck and shoulder pain.



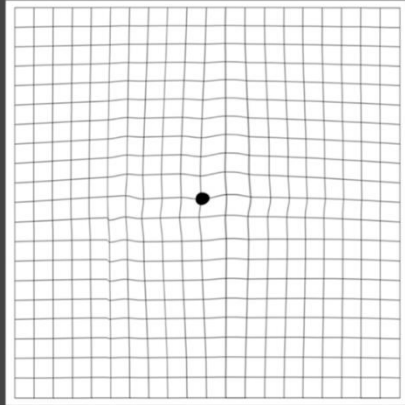
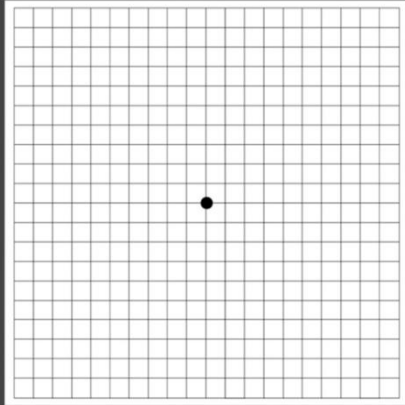
# MSI Eye Care Technology: Eye-Q Check



Detect early signs of retinal disease with Amsler Grid

## Amsler Grid

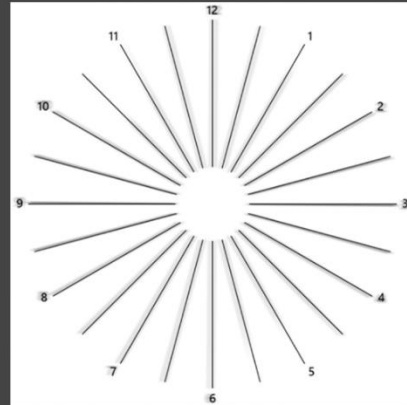
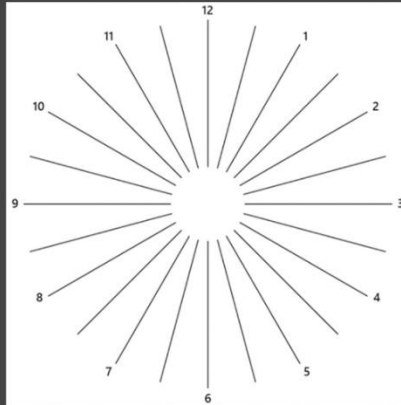
MSI recommends you to take a rest for 20 minutes if any of the lines in the grid appear wavy, blurred or distorted; or if some boxes in the grid don't look like a square or the same size.



Astigmatism self-test

## Astigmatism

To test, cover your left eye with your left hand and look closely at the image, then do the same with your right eye. MSI recommends you to take a rest for 20 minutes if some lines appear greyer than others.





## MSI Eye Care Technology: 100Hz & 1ms



### 6. Quality of Goods & Service

- (i) The goods to be supplied shall be free from manufacturing defects and shall be replaced with a new one if found defective.
- (ii) The goods shall have a minimum warranty of 3 years.
- (iii) The first party after the goods supplied shall be the goods supplier.

Lower Refresh Rate

used and shall be  
goods shall be

brand to the effect that  
the tender document

100Hz High Refresh Rate

**100Hz + 1ms MPRT**  
**Flawless Flow, No More Stutters.**

Attend the smoothest online conference call and show the perfect advertising video to customers with a 100Hz refresh rate.

VESA's research shows that for 95% of users, 85Hz Refresh Rate has become a de facto standard for normal use that shows "flicker-free" images.

"85Hz – While not a "video-friendly" rate, 85Hz has become a de facto standard for PC displays wishing to meet the strictest ergonomic requirements for a "flicker-free" image. At this rate, typical CRT-based computer display, under standard viewing conditions, will appear "flicker-free" to greater than 95% of the population."

- the VESA Coordinated Video Timings Standard Version 1.2

## Ergonomic Design: Adjustable Stand

Working in a suitable position not only has a positive impact on job satisfaction and productivity but can also contribute to overall health and well-being. Also, 4-way adjustable stand allows users who need to work in a vertical way properly and efficiently.



Pivot:  $-90^{\circ} \sim 90^{\circ}$



Height: 0~120mm



Tilt:  $-5^{\circ} \sim 20^{\circ}$



Swivel:  $-30^{\circ} \sim 30^{\circ}$



# IPS Panel 178° Viewing Angle



**Vibrant Collaboration,  
Seamless Precision**

IPS panels enhance work with wide angles, accurate colors for collaboration, and assuring product colors. Promote productivity during extended sessions.



A man and a woman in business attire are standing on a balcony, looking at a smartphone together. The woman is on the left, wearing a white blouse and dark pants. The man is on the right, wearing a blue shirt and a dark blazer. They are both smiling and looking at the phone. The background shows a city skyline with tall buildings. The text "Productivity & Connectivity" is overlaid in the center.

# Productivity & Connectivity

# Empower Productivity, Unleash Connectivity

PRO MP245 Series is the caring assistant that boosts your productivity.



## VESA Mountable

The PRO MP245PG supports the standard VESA mount. You can mount the monitor with MSI monitor arm or mount it on the wall and make the desk tidier and cleaner.



## Built-in Speakers

With two built-in speakers, users were allowed to listen to audio files, to attend online conferences, or to edit videos at any time without carrying an external speaker or wearing a headphone.

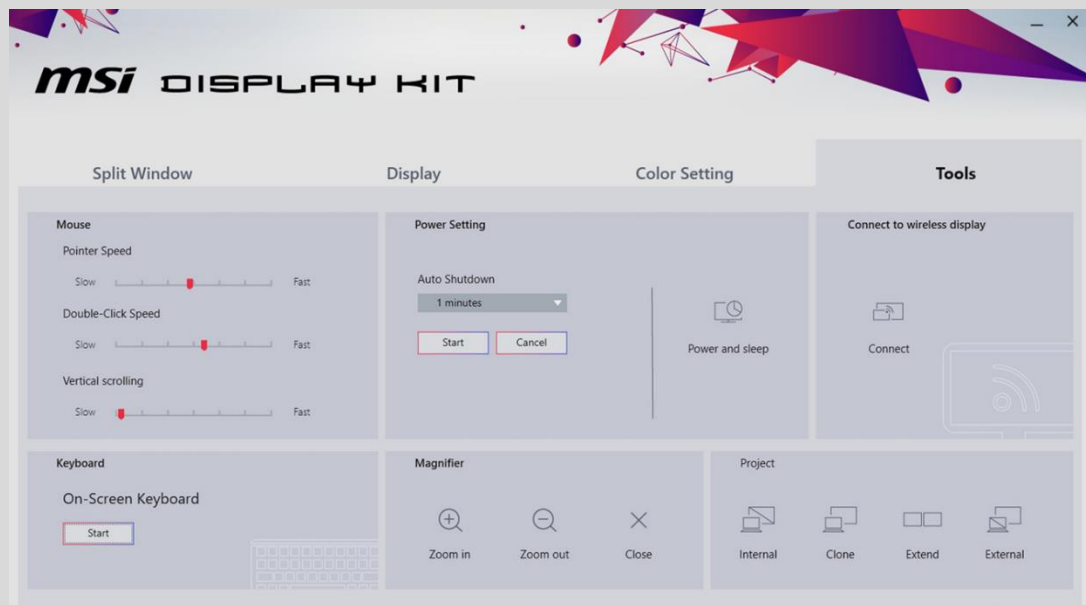
## Complete I/O Ports

No problem at all if you'd like to work or learn with different devices. PRO MP245 Series supports one HDMI, one DP and one D-Sub (VGA), it keeps the flexibility with dual sources for your multiple devices.



# Simplicity At Your Fingertips

## Display Kit App



The MSI exclusive software Display Kit provides the most convenient tool, the proper display that allows you to read and enjoy the image at the same time & color mode to you while working or everyday.



Connect to  
Wireless Display



Layout Setting



Auto-Shutdown



Zoom in/ out



Project Mode

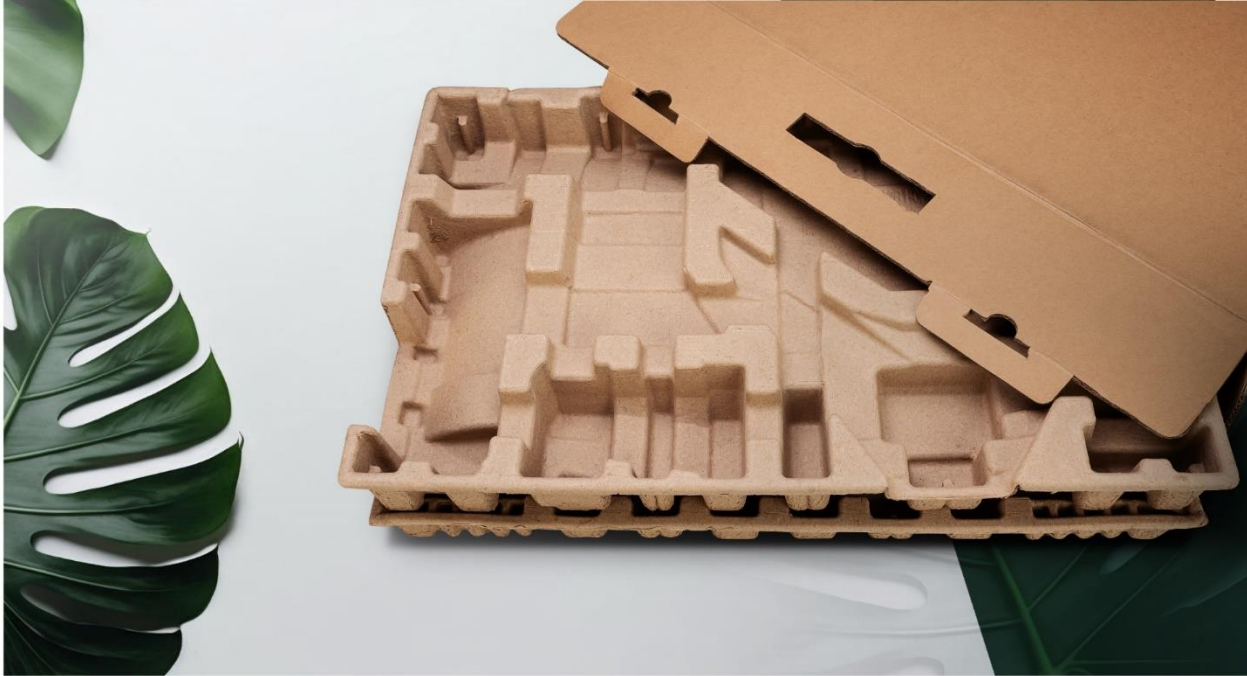
## Power Saving Product

- ✓ Power Saving Mode
- ✓ Energy Star 8.0



It is our responsibility to promote sustainable development and we proudly offer an eco-friendly product, contributing to a greener environment.





## **Sustainable Packing Solutions**

Reduce the environmental impact with our sustainable solutions.





## **A Better Future with EPEAT Registered MSI Monitors.**

EPEAT is the world's premier global ecolabel for electronics. MSI monitors provide sustainable products inside out and participate in EPEAT/EPEAT ecolabel. Let's protect the earth with actions.

\*Micro-Star International Co., Ltd. registers products in EPEAT. See [www.epeat.net](http://www.epeat.net) for registration status and tier levels by country.



# PRO MP245PG Specification



1. 1x AC-in
2. 1x DP 1.2
3. 1x HDMI™ 1.4b (FHD@100Hz)
4. 1x D-Sub (VGA)
5. 1x Line-in
6. 1x Headphone-out
7. 1x Kensington Lock
8. 5-Way Navigator

Type / Size	23.8"
Active Display Area (mm)	527(H) x 296 (V)
Curvature	Flat
Panel Type	IPS
Resolution	1920 x 1080 (Full HD)
Pixel Pitch	0.2745(H) x 0.2745(V)
Aspect Ratio	16:9
Brightness (nits)	300 cd/m <sup>2</sup>
Contrast Ratio	1300:1
Refresh Rate	100 Hz
Response Time	1ms(MPRT) / 4ms (GTG)
View Angles	178° (H) / 178° (V)
sRGB	102% (CIE 1976)
Surface Treatment	Anti-glare
Display Colors	16.7M
Color Bit	8 bits (6 bits + FRC)
Video Interface	1x HDMI (1.4b) 1x DP (1.2) 1x D-Sub (VGA)
Audio Interface	1x Line-in 1x Headphone-out
Speaker	2 x 2W
Power Type	Internal Power
Power Input	100~240V, 50~60Hz
Adjustment (Tilt)	-5° ~20°
Adjustment (Swivel)	-30° ~30°
Adjustment (Pivot)	-90° ~90°
Adjustment (Height)	0 ~ 120 mm
Kensington Lock	Yes
VESA Mounting	100 x 100 mm
Dimension (W x D x H)	539.8 x 228.9 x 400.8 mm (21.25 x 9.01 x 15.78 inch)
Weight (NW / GW)	4.62 kg (10.19 lbs) / 7 kg (15.43 lbs)
Dimension (W x D x H) With Carton	WW carton: 600 x 125 x 505 mm (23.62 x 4.92 x 19.88 inch) Outer: 618 x 143 x 535 mm (24.33 x 5.63 x 21.06 inch)
Note	HDMI: 1920 x 1080 (Up to 100Hz) DisplayPort: 1920 x 1080 (Up to 100Hz) D-Sub (VGA): 1920 x 1080 (Up to 60Hz) Adaptive-Sync Support Display Kit Support Plan to Pass EPEAT Silver (by country)

msi



*msi*

THE LEAP TO SINGULARITY

