

# SmallRig



**Arca-Type Quick Release Plate  
for DJI RS 2 / RSC 2 / RS 3 / RS 3 Pro  
/ RS 4 / RS 4 Pro / RS 4 Mini**

Operating Instruction

SmallRig Arca-Type Quick Release Plate for DJI RS 2 / RSC 2 / RS 3 / RS 3 Pro / RS 4 / RS 4 Pro / RS 4 Mini 3154 is designed to attach to camera cage with two 1/4"-20 screws to fit in RS 2 and RSC 2 Gimbals, and solve the twisting issue that the original Arca Plate only allows being attached onto the cage through one 1/4 screw. Compared with the original Arca plate, the plate 3154 is extended 10mm longer and increases the range for left and right adjustments to mount cameras in special shapes, such as BMPCC 4K camera equipped with a cage. The distance between the two locking 1/4 screws are 18mm which is compatible with most SmallRig cages like Sony A7S III cage 2999, Canon R5/R6 cage 2982, Nikon cage 2926 for Z series cameras, etc. Moreover, the plate features an open-middle design so you can access most camera mounting screw through the plate and easily unmount the camera from the cage to move it to a tripod or other mounts. The plate also features rubber pads to protect the cage.

## **Safety Guidelines**

### **1. Environment**

Do not use the product underwater, in extreme temperatures (e.g., freezing or direct heat), corrosive environments, or excessive dust. Dry metal parts immediately after liquid contact to prevent corrosion.

### **2. Load Capacity**

Do not exceed the maximum weight capacity indicated on the product. Overloading risks structural failure, deformation, or accidental drops.

### **3. Cleaning & Maintenance**

Clean surfaces with a dry, soft cloth. Avoid chemicals like alcohol or solvents. Ensure dry and ventilated conditions for long-term storage.

### **4. Structural Integrity**

Do not modify the product (e.g., drilling, cutting)—this compromises structural integrity and increases drop risks.

### **5. Malfunctions**

Stop use immediately if you notice deformation, unusual noises, or loose components, and contact support.

## **In the Box**

Guarantee Card    × 1

Allen Wrench    × 1

Plate    × 1

# Compatibility

SONY A7S III Cage: 2999



PANASONIC S1H Cage:CCP2488



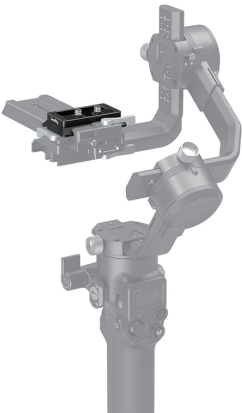
Nikon Z5/Z6/Z7/Z6II/Z7II Cage: 2926



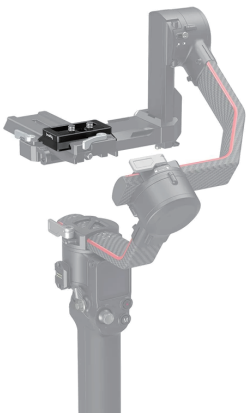
CANON EOS R5/R6 Cage:2982



for RSC 2



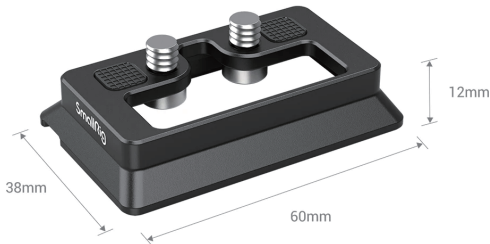
for RS 2



## Compatibility of 3154 Arca Swiss Plate

Brands	Camera	Cage ID
Sony	A6 Series	1661, 1889, 2310, 2082, 2268, 2493
	A7系列	2999, 2087, 2176, 2098, 2238, 2031, CCS2416, 2645, CCS2629, 3081
	A9	2013
Blackmagic Design	BMPCC 4k	2203, 2254
Nikon	Z6, Z7	2243, 2824, 2926, 2972
Fujifilm	X-T4	2808, 2761
	X-T3	2228, 2229, 2810
	X-H1	2123, 2124
Panasonic	GH5/GH5S	2049, CCP2646
	S1H	2488
	S5	2983
	S1/S1R	2345
Canon	EOS R5	2982
	EOS R/RP	2803, 2332
	6D II	2142
	EOS 90D 80D 70D	2658
	5D IV	2271
	EOS 70D/80D	1789
	1DX/1DX MarkII	2365

# Specifications



## Specifications:

Product Dimensions: 60.0 × 38.0 × 12.0mm

Package Dimensions: 76.0 × 63.0 × 40.0mm

Product Weight: 20.0 ± 5.0g

Package Weight: 50.0 ± 5.0g

Material(s): Aluminum Alloy

Manufacturer Email: [support@smallrig.com](mailto:support@smallrig.com)

Manufacturer: Shenzhen Leqi Innovation Co., Ltd.

Add: Rooms 101, 701, 901, Building 4, Gonglianfuji Innovation Park, No. 58, Ping'an Road, Dafu Community, Guanlan Street, Longhua District, Shenzhen, Guangdong, China.

Consignor: Shenzhen LC Co., Ltd.

Add: Room 201, Building 4, Gonglianfuji Innovation Park, No. 58, Ping'an Road, Dafu Community, Guanlan Street, Longhua District, Shenzhen, Guangdong, China.

# RoHS

# CE



Séparez les éléments avant de trier



Made in China