

Delock PCI Express x16 Card to 4 x internal NVMe M.2 Key M with heat sink - Bifurcation (LxW: 145 x 111 mm)

Description

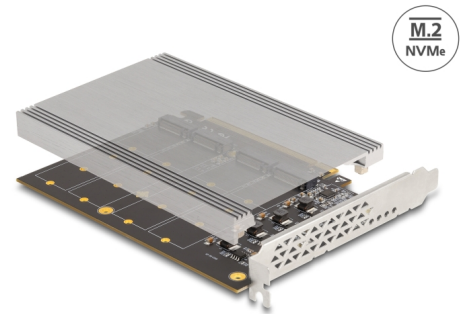
This PCI Express card by Delock expands the PC by **four M.2 slots**. Up to four M.2 SSDs in format 2280, 2260, 2242 and 2230 can be connected. With the help of the **large heat sink** sufficient cooling of the M.2 modules is guaranteed.

PCIe Bifurcation

The card requires the **PCIe bifurcation** of the motherboard to split the PCIe signal in order to use multiple ports.

Note

Without PCIe bifurcation only the first M.2 slot of the card can be used.



Item no. 90210

EAN: 4043619902101

Country of origin: China

Package: Box

Technical details

- Connectors:
internal:
4 x M.2 key M slot
1 x PCI Express x16, V4.0
- Interface: PCIe
- Supports M.2 modules in format 2280, 2260, 2242 and 2230 with key M or key B+M based on PCIe
- Maximum height of the components on the module: 1.5 mm, application of double-sided assembled modules supported
- Supports NVM Express (NVMe)
- 5 x LED indicator
- Bootable, ex UEFI version 2.3.1
- Supports S.M.A.R.T.
- Supports TRIM
- Dimensions heat sink (LxWxH): ca. 144 x 95 x 8 mm

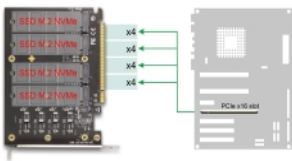
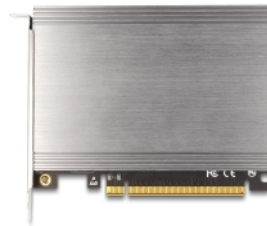
System requirements

- Linux Kernel 5.19 or above
- Windows 10/10-64/11
- Windows Server 2019
- PC with one free PCI Express x16 / x32 slot
- Motherboard and BIOS with PCIe bifurcation support

Package content

- PCI Express card
- Heat sink
- Mounting material
- 4 x thermal conductive pad
- User manual

Images



General

Function:	Bootable, ex UEFI 2.3.1 TRIM S.M.A.R.T.
Supported operating system:	Windows 10 32-Bit Windows 10 64-Bit Windows Server 2019 Windows 11 Linux Kernel 5.15 or above
LED indicator:	5 x
Supported module:	M.2 modules in format 2280, 2260, 2242 and 2230 with key M or key B+M based on PCIe

Interface

Internal:	1 x PCI Express x16, V4.0 4 x M.2 key M slot
-----------	---