



## Maximize Your Individuality

Cooler Master presents the TD500 MAX, the next revolutionary step in our MAX line up. The MAX series boasts maximum performance, ease-of-use, and exclusive features. The TD500 MAX is no exception.

Featured by a 38mm thick radiator and high-performance Mobius fan combination, the TD500 MAX is one of the best performative ATX case than ever.

Pre-installed components and pre-routed cables makes the PC building has never been easier. All you need to do is plug in your motherboard, GPU, and all the cables and you will be good to go.

Finally, a sleek grey colorway makes this a one-of-a-kind case. Maximize your individuality with the TD500 MAX.

# TD500 MAX

### The MAX series, revolutionized

The TD500 MAX represents an entirely new stage in how Cooler Master is thinking about, and making, PC cases. The MAX series has always been about maximum performance, and the TD500 continues that legacy by focusing on synergizing between our case, power, and thermal products while providing unique benefits like improved installation.

### High-performance ATX form factor

Featuring Cooler Master's latest all-in-one water-cooling solution, the TD500 comes loaded with all of the features and performance benefits that you've come to expect from a high-performance PC build.

### PC building made simple

Building a PC can be time consuming and confusing, but it has never been easier than it is now with the TD500 MAX's numerous ease-of-use and quality-of-life improvements. This includes features such as pre-routed cables, pre-installed components, all of which make setup a total breeze.

# MAX

# FEATURE HIGHLIGHTS



## Polygonal Mesh

Crafted from Cooler Master's Fine Mesh technology, Polygonal Mesh features a three-dimensional contour and is also capable of simultaneously providing high airflow and dust filtration.



## Innovative screw storage

The PSU cover includes a convenient, hidden storage area for extra screws.



## Patented two-stage power connector

To further reduce the pains of installation and cable management, we have included our patented, in-house designed, two-stage power connector.



## Tailor-made ATX3.0 power solution

A Cooler Master GXII 850W ATX 3.0 PSU comes pre-installed and ready for high performance at peak power.



## Custom AIO cooler

A Cooler Master 360x38mm Atmos radiator featuring three Mobius 120P fans can keep even the latest CPUs cooled off.



## Exclusive colorway

The TD500 comes in the MAX exclusive grey colorway, presenting an aesthetic as bold as its specs.

# FEATURE HIGHLIGHTS

Product Name	TD500 MAX		
Product Number	TD500V2-MGNN85-SL0/ TD500V2-MGNN85-SL1		
Exterior Color	Gun metal		
Materials	Exterior	Steel, Plastic, Tempered Glass	
	Left Side Panel	Tempered Glass	
Dimensions (L x W x H)	Incl. Protrusions	499x210x500mm	
	Excl. Protrusions	482x210x477mm	
Volume (Liters Excl. Protrusions)	48L		
Motherboard Support	Mini-ITX, Micro-ATX, ATX		
Expansion Slots	7		
Drive Bays	5.25" ODD	N/A	
	3.5" HDD	2	
	2.5" SSD	3	
I/O Panel	USB Ports	2 x USB 3.2 Gen 1 + 1x USB3.2 Gen 2x2 type C	
	Audio In / Out	1 x Audio combo	
Included Accessories	ARGB hub		
Pre-installed Radiator	ML360 Atmos MAX ver.		
Pre-installed Power Supply Unit	GX II Gold 850W ATX3.0 MAX ver.		
Pre-installed Fan(s)	Front	3 x 120mm(AIO Mobius120P ARGB fan)	
	Top	N/A	
	Rear	1 x CF120 ARGB fan	
Fan Support	Front	3 x 120mm/2 x 140mm	
	Top	3 x 120mm/2 x 140mm	
	Rear	1x 120mm	
Radiator Support	Front	360mm/240mm	
	Top	360mm/240mm	
	Rear	120mm	
Clearances	CPU Cooler	165 mm	
	Power Supply	200mm (Pre-installed PSU Length 160mm)	
	Graphics Card	380mm( with pre-installed AIO on front)	
Cable Routing	Behind MB Tray	19 mm	
Dust Filters	Top, Bottom		
Warranty	2 years (Case), 5 years (Thermal Solution), 5 years (Power Delivery)		

EAN code	4719512146279 4719512146286(UK)
UPC code	884102118593
Net weight	11.4kg
Gross weight	14.2kg
Carton dimension (L x W x H)	600x327x618mm

Cont.	W/ Pallet	Carton/ Pallet	W/O Pallet
20'	18	180	225
40'	20	378	465
40 HQ	20	420	544

# FEATURE HIGHLIGHTS



## Refined dual chamber design

Our signature dual chamber pump has been refined for enhanced cooling synergy.



## Powered by Mobius 120P ARGB Fan

Pre-installed with 120mm Mobius fans, bring the performance potential to the next level.



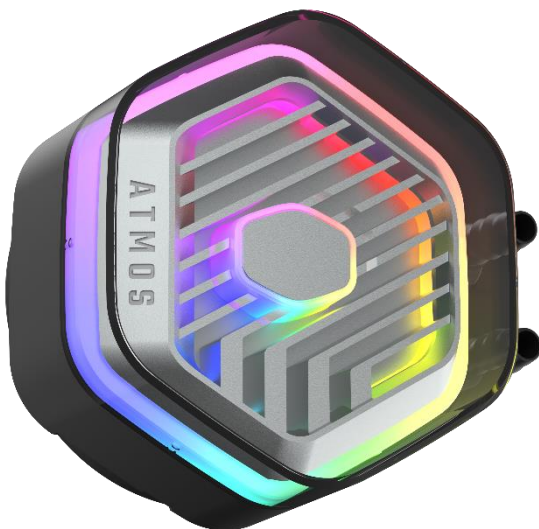
## ARGB gen 2 lighting

Next generation lighting with addressable gen 2 RGB, compatible with both MasterPlus and MasterCTRL.



## Customed radiator

Increased surface area of the radiator with thicker 38mm radiator.



## Eco-friendly pump cover

The entire pump cover is manufactured with eco-friendly recycled plastics, putting our environment first.

## Customizable pump top cover

Removable pump top cover, customizable with your own 3D-printed designs.



# FEATURE HIGHLIGHTS

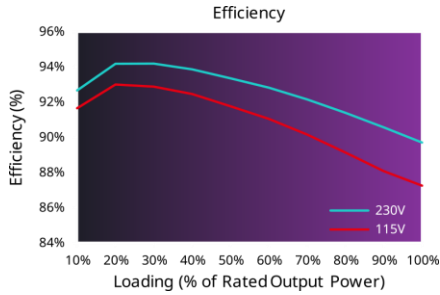
## All-In-One Watercooling Solution

Product name	MasterLiquid 360 Atmos Max (MLX-D36M-A24PZ-DY)	
Exterior Color	Black	
CPU Socket	Intel	LGA 1200/1700
	AMD	AM4/AM5
Radiator	Material	Aluminum
	Dimensions (L x W x H)	394 x 119.6 x 38.2mm
Pump	Dimensions (L x W x H)	84.9 x 81 x 53.15 mm
	MTTF (Hours)	> 210,000 Hours
	Noise Level (dBA)	25 dB(A)
	Connector	4-pin PWM
	Rated Voltage (VDC)	12V
	Power Consumption (W)	3.84W
Warranty	5 years	

### Included Fans

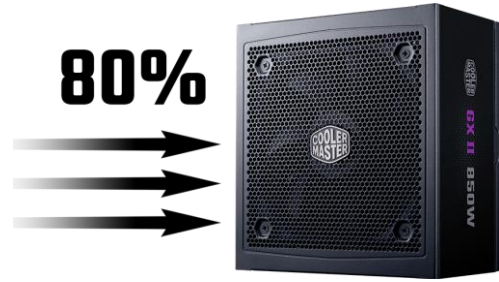
Product name	MOBIUS 120P ARGB
Dimensions (L x W x H)	120 x 120 x 25 mm / 4.7 x 4.7 x 1"
LED Type	Addressable Gen 2 RGB (3 PIN ARGB)
Speed (RPM)	0~2400 RPM $\pm$ 10%
Airflow (CFM)	75.2 CFM
Noise Level (dBA)	30 dBA
Bearing	Loop Dynamic Bearing
Static Pressure (mm H2O)	3.63 mmH <sub>2</sub> O
MTTF	>200,000 Hours
Power Connector	12VDC, 4pin PWM
Power Consum.	2.16W
Rated Voltage (VDC)	12 VDC
Rated Current (A)	0.18 A
Weight	179g
Warranty	5 Years

# FEATURE HIGHLIGHTS



## Exceptional efficiency

Can achieve 80 Plus Titanium level efficiency during general use.



## Advanced thermal performance

An airflow maximum of 80% from the hexagonal fan cover enhances thermal performance.



## 80 Plus Gold efficiency certification

Certified to achieve more than 90% efficiency at typical loads.



## Fully modular cabling

Modular cabling reduces clutter and improves overall thermal performance.



## Silent and smart performance

Zero-RPM default mode below 40% loads.



## A durable 12VHPWR cable

An advanced thermal structure and flexible cable provide improved safety.

# FEATURE HIGHLIGHTS

## Included Power Supply Specifications

ATX Version	ATX 12V Ver. 3.0		
PFC	Active PFC		
Input Voltage	100-240V		
Input Current	10 - 5A		
Input Frequency	50 - 60Hz		
Dimensions (L x W x H)	160 x 150 x 86mm		
Fan Size	120mm		
Fan Bearing	HDB		
Efficiency	≥ 90% @ Typical Load		
80 PLUS Rating	80 PLUS Gold		
ErP 2014 Lot 3	Yes		
Operating Temperature	0 ~ 40°C		
Power Good Signal	100-150 ms		
Hold Up Time	≥ 16ms @80%Load		
MTBF	>100,000 hours		
Protections	OPP/ OVP/ OTP/ OCP/ SCP/ UVP/ Surge & Inrush Protection		
Regulatory	cTUVus, TUV, CE, FCC, BSMI, CCC, EAC, RCM, UKCA, RoHS2.0 / BIS, KC (based on region's request.)		
Connectors First stage = (1) Second stage = (2)	ATX 24 Pin	x1 = 1x (550mm) (1)	x1 = 1x (140mm) (2)
	EPS 4+4 Pin	x1 = 1x (500mm) (1)	x1 = 1x (130mm) (2)
	EPS 8 Pin	x1 = 1x (500mm) (1)	x1 = 1x (130mm) (2)
	SATA (1)	x6 = 2x (500(s)+120(s)+120(s)+120(p)mm)	
	Peripheral 4 Pin (1)	x2 = 2x (500(s)+120(s)+120(s)+120(p)mm)	
	PCI-e 6+2 Pin	x1 = 1x (300mm) (1)	x1 = 1x (250mm) (2)
	12VHPWR (1)	x1 = 1x (650mm)	

AC INPUT	100-240V~ 10 - 5A 50 - 60Hz				
DC OUTPUT	+3.3V	+5V	+12V	-12V	+5Vstb
	20A	20A	70.8A	0.3A	3A
TOTAL POWER	120W	849.6W	3.6W	15W	120W
	850W				

