

1. Disassembly Procedures:

S1 Turn off power.



S2 Unplug external cables(power cable and video cable) from the monitor.



Remove stand from the product:

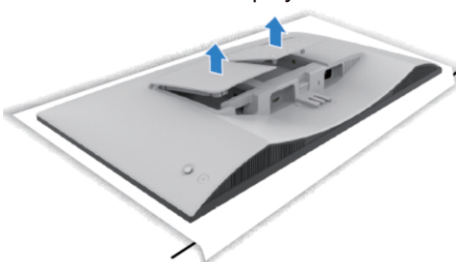
S3

(1) Place a flat cushion or a sitting mat near the edge of a table and place the monitor on it with the display facing down. (2) Press the stand down to access to the release latch. (3) Press the release latch. (4) While pressing the release latch, slide out the stand assembly from the monitor.



Remove the VESA cover and cable cover:

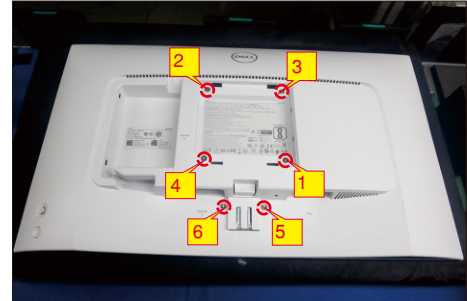
Lift the VESA cover and cable cover up to release from the back of the display.



S4

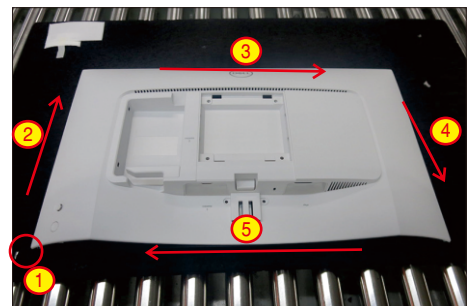
Use a Philips-head screwdriver to remove 6pcs screws for unlocking mechanisms.

(No.1~4 screw size=M4x11; Torque=10±1kgfxcn;
No.5~6 screw size=M4x8; Torque=10±1kgfxcn)



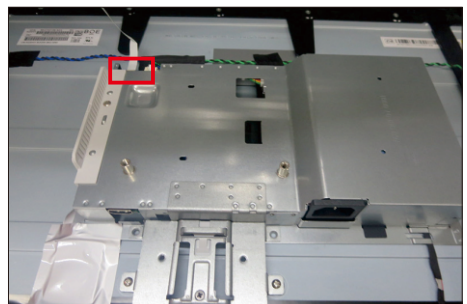
S5

Use a mylar sheet to insert the left-bottom corner to release the rear cover, then wedge your fingers between the rear cover and the middle bezel of the monitor to release the rear cover, then use one hand to press the middle bezel, the other hand to pull up carefully the rear cover in order of arrow preference for unlocking mechanisms of rear cover.



S6

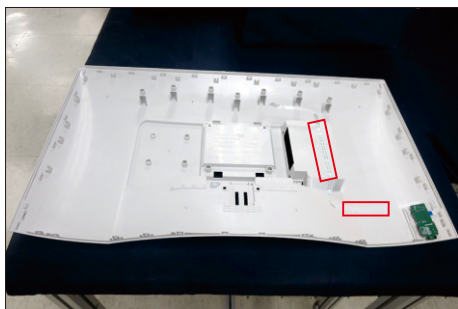
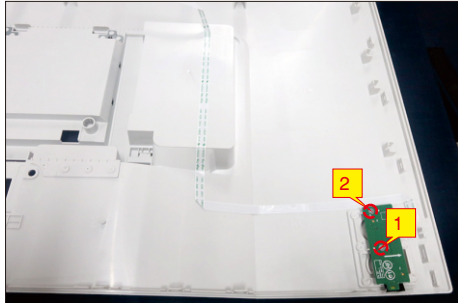
Lift the rear cover up carefully. Disconnect the joystick cable from the connectors of the interface board, and then remove the rear cover.



S7

Use a Philips-head screwdriver to remove 2pcs screws for unlocking the joystick key board unit, then tear off the tapes and release the USB board.

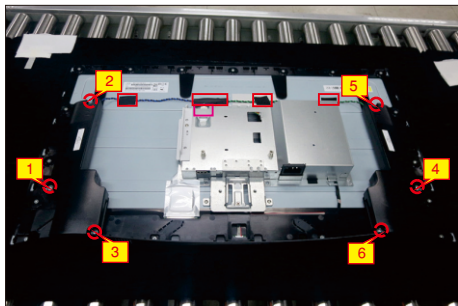
(No.1~2 screw size=M2x3.3, Torque=1±0.2kgfxcn)



Tear off 4pcs acetate tapes to release speakers' cables, then use a Philips-head screwdriver to remove 6pcs screws for unlocking the speakers, then disconnect the speakers' cable away from the connector and release the two speakers from the hooks of the middle frame.

(No.1~6 screw size=M3x8, Torque=6±1kgfxcn)

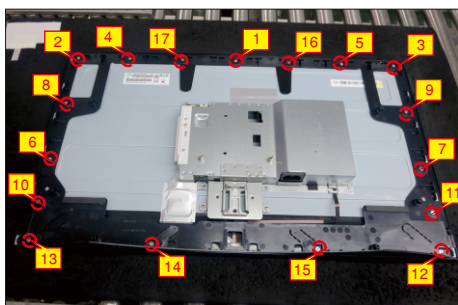
S8



Use a Philips-head screwdriver to remove 17pcs screws for unlocking the middle frame with the panel module.

(No.1~17 screw size=M3x4, Torque=5±1kgfxcn)

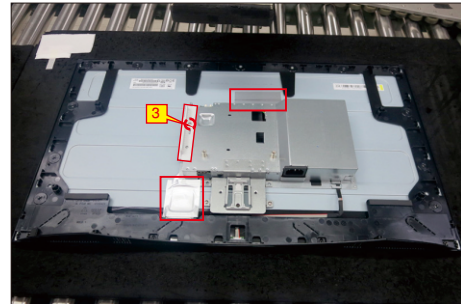
S9



S10

Tear off 1pcs conductive tape and 1pcs aluminum foil, then use a Philips-head screwdriver to remove 1pcs screws for unlocking the IO cover, then release the IO cover from the hooks of the bracket chassis.

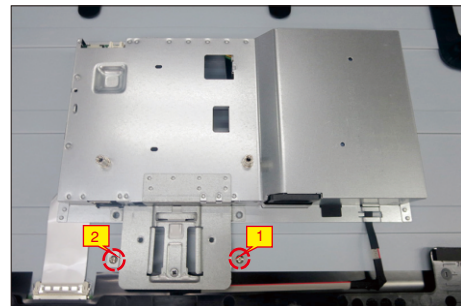
(No.1 screw size=M3x4, Torque=5±1kgfxcn)



S11

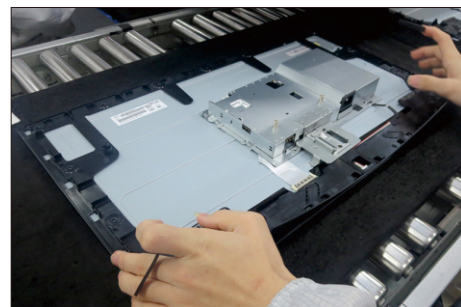
Use a Philips-head screwdriver to remove 2pcs screws for unlocking the bracket with middle frame and panel module.

(No.1~2 screw size=M3x4, Torque=5±1kgfxcn)



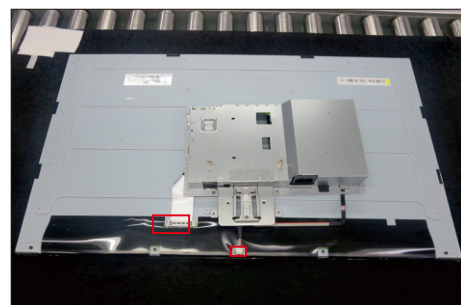
S12

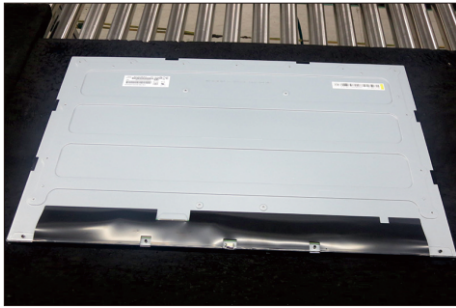
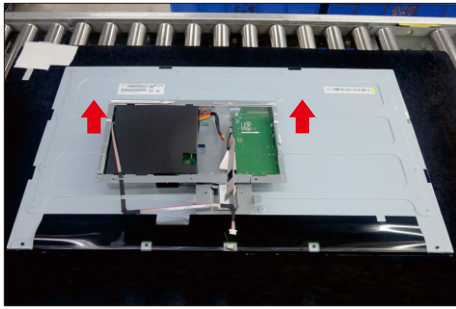
Take away the middle frame, and put it on a protective cushion.



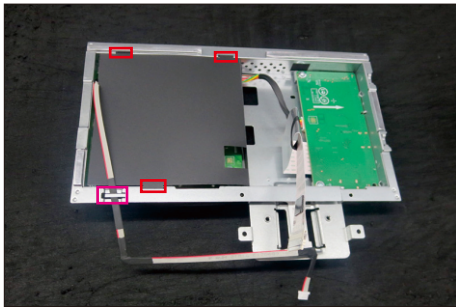
S13

Move up the bracket chassis module, and disconnect the LVDS cable and panel lamp cables from the connectors of the panel, then tear off the tapes and lift up the bracket chassis and put it aside for later disassembling.



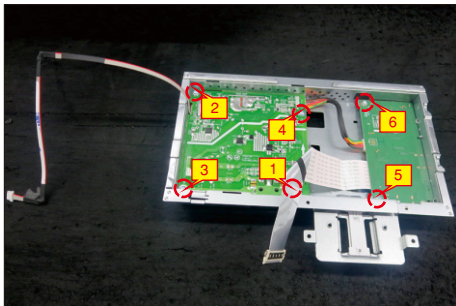
**S14**

Release the lamp cable and Mylar sheet from the hooks of the bracket chassis module.

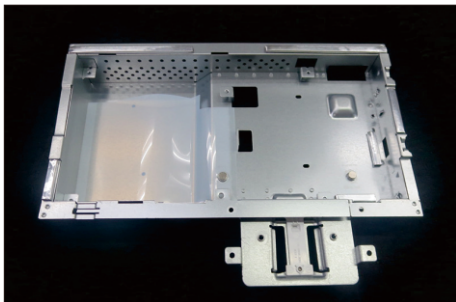
**S15**

Use a Philips-head screwdriver to remove 6pcs screws for unlocking the circuit board.

(No. 1 screw size=M4x8, Torque=6±0.5kgfxcn;
No.2~6 screw size=M3x6, Torque=6±0.5kgfxcn)

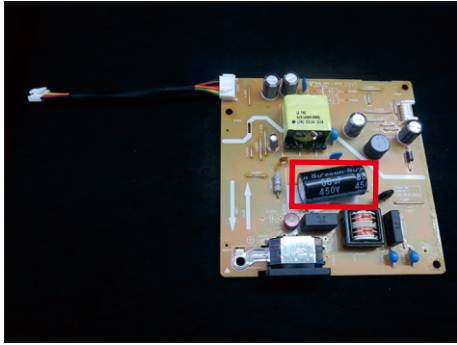
**S16**

Remove the interface board and power board from the bracket chassis and disconnect all the cables.

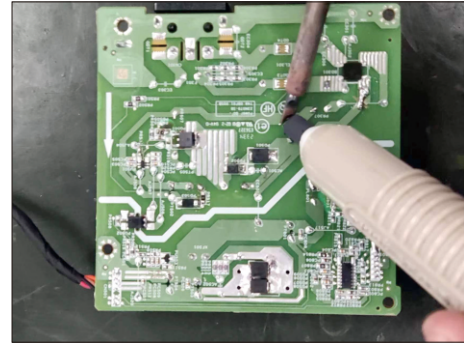


S17

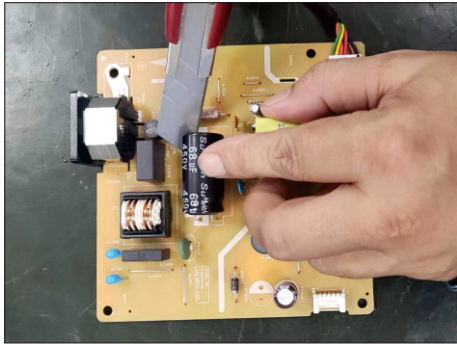
Remove electrolyte capacitors (red mark) from printed circuit boards.



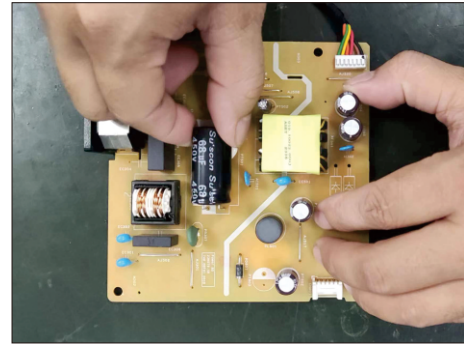
S17-4 Take out bulk cap. pin solder with soldering iron and absorber.



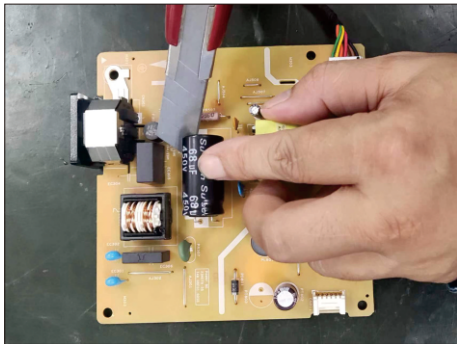
S17-1 Cut the glue between bulk cap. and PCB with a knife.



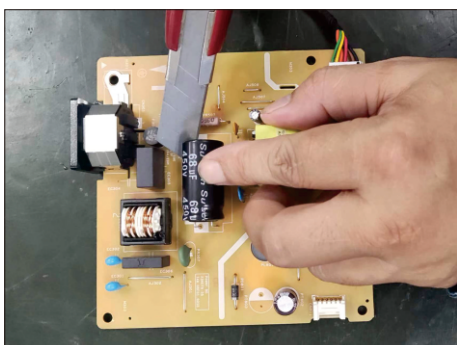
S17-5 Lift the bulk cap. up and away from the PCB.



S17-2 Ensure cutting path within the glue, don't touch bulk cap. or PCB.



S17-3 Cut into the bottom of bulk cap. and pullit up carefully.



2. Product material information

The following substances, preparations, or components should be disposed of or recovered separately from other WEEE in compliance with Article 4 of EU Council Directive 75/442/EEC.

Capacitors / condensers (containing PCB/PCT)	No used
Mercury containing components	No used
Batteries	No used
Printed circuit boards (with a surface greater than 10 square cm)	Product has printed circuit boards (with a surface greater than 10 square cm)
Component contain toner, ink and liquids	No used
Plastic containing BFR	No used
Component and waste contain asbestos	No used
CRT	No used
Component contain CFC, HCFC, HFC and HC	No used
Gas discharge lamps	No used
LCD display > 100 cm ²	Product has an LCD greater than 100 cm ²
External electric cable	Product has external cables
Component contain refractory ceramic fibers	No used
Component contain radio-active substances	No used
Electrolyte capacitors (height > 25mm, diameter > 25mm)	Product has electrolyte capacitors (height > 25mm, diameter > 25mm)

3. Tools Required

List the type and size of the tools that would typically can be used to disassemble the product to a point where components and materials requiring selective treatment can be removed.

Tool Description:

- Screwdriver (Phillip head) #1
- Screwdriver (Phillip head) #2
- Penknife
- Soldering iron and absorber