



SafeConsole Quick Start Guide

Before consulting this Quick Start Guide



SafeConsole Cloud Users

Ensure that you have received your initial setup email



SafeConsole On-Premise Users

Ensure that you have [completed the SafeConsole On-Prem Installation Guide](#)

There is a [full SafeConsole manual available](#) that includes a SafeConsole Introduction and Basics section that allows for a good starting point in exploring the solution.

Step 1. Log on to SafeConsole as an administrator in your web browser

- **SafeConsole Cloud** Log in with your SafeConsole Administrator credentials in your web browser as the license is pre-activated.
- **SafeConsole On-Premise** The SafeConsole server is available in your web browser when you have completed the [installation](#), then proceed to log on.





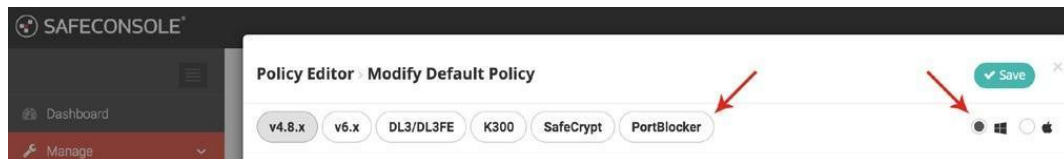
Step 2. Confirm and save the Default Policy

Please follow the steps below to confirm and save the Default Policy:

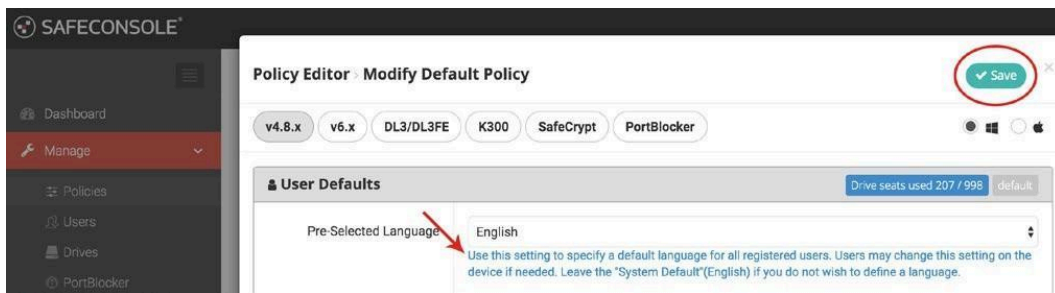
1. Go to **Manage > Policies** under the main navigation menu.
2. Click the **Modify Default Policy** button. The Policy Editor opens.



3. Select the **version/devices** you want to update policies for and choose **Windows or Mac** from the top right.



4. Click the **Save** button at the top right of the window to continue.



The windows have explanations written in blue for added simplicity. It is recommended that you go through each policy to confirm that all policies fit your organization's goals.

Please note that in addition to the Default Policy, each path (domain/group/OU/user/device) listed or created can have its own custom policy, offering maximum flexibility.



OPTIONAL Step 3. Create custom policies

To create custom policies for specific users and devices:

1. Go to the **Manage > Policies** screen.
2. Click **Add New Path** to create a new group and assign custom policies.
3. To create a new custom policy, click the **default drop-down button** under Policy and select **Create New Custom Policy** for the respective path.
4. This will open the Policy Editor for you to create your custom policy. Remember to click **Save** when done in the Policy Editor.



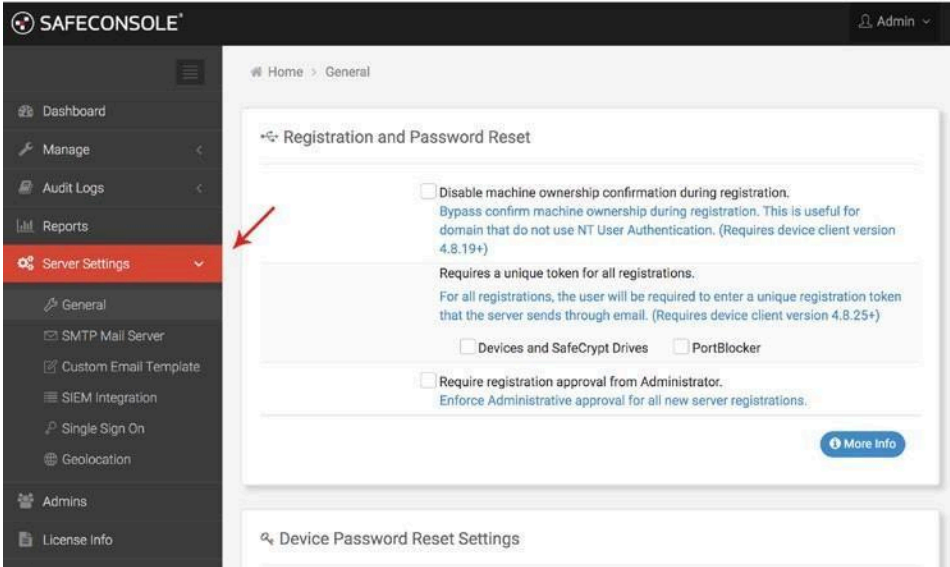


Step 4. Confirm and set critical SafeConsole server settings

Go to **Server Settings > General**

Please review the following sections

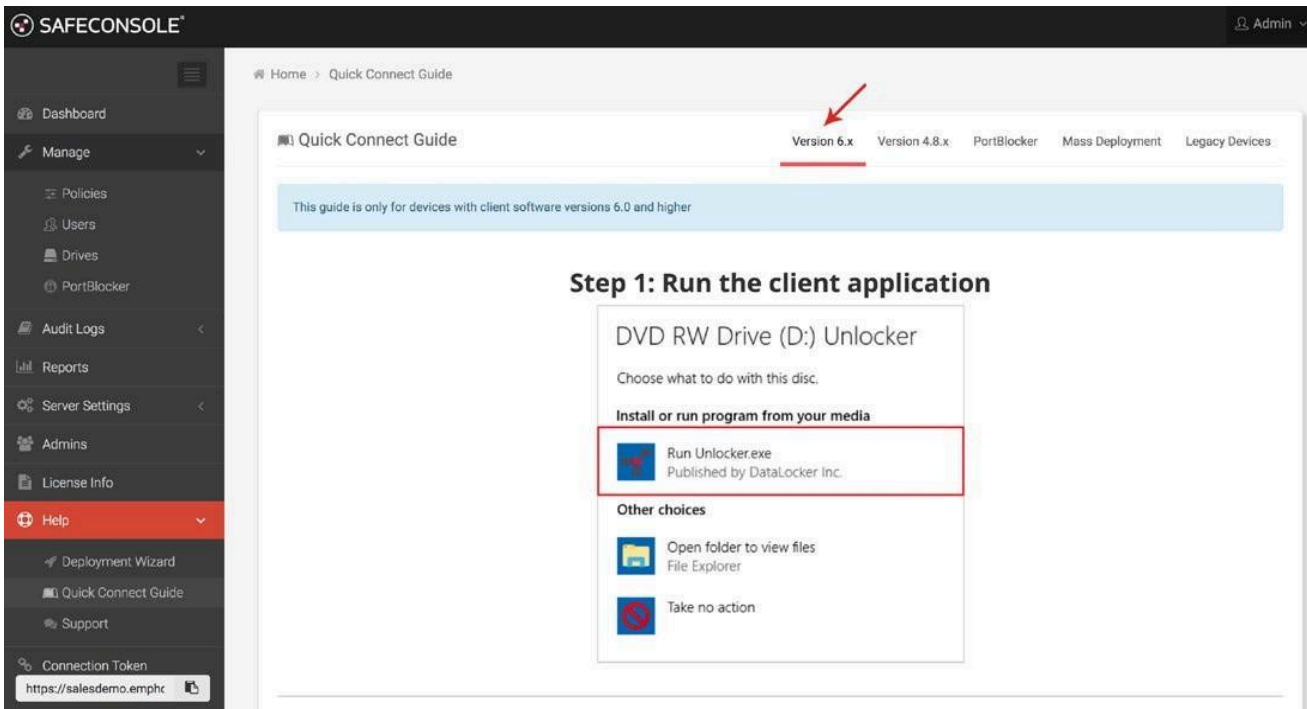
- **Registration and Password Reset**
- **Device Password Reset Settings**





Step 5. Connect your first device to SafeConsole

Select **Help > Quick Connect Guide** choose which version/ device you'd like to connect from the top menu bar, and follow the guide to connect a drive.



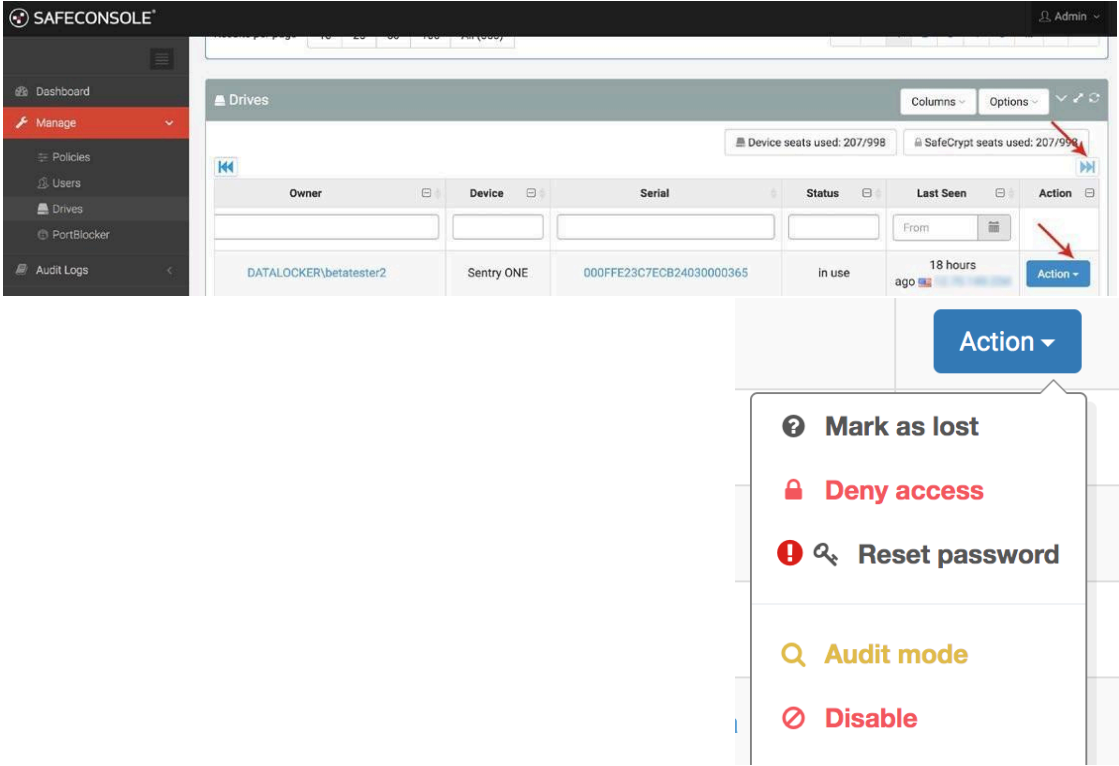


Step 7. Confirm device registration to SafeConsole

From the main navigation menu, select **Manage > Devices**. Your newly registered device should be visible from this screen.

Note: Devices fetch new configurations and policies each time they are unlocked on a machine that can reach SafeConsole.

From this screen, you can apply an Action (Mark as lost, Deny access, Reset password, Audit mode, Disable, or Factory reset) to a device by clicking the “Action” drop-down button to the right of the respective device. You may need to side-scroll using the blue double arrow.





Step 8. Familiarize yourself with SafeConsole

From the main navigation menu, select **Help > Support** to access the full [SafeConsole Manual](#). The Request Customer Support button links to [DataLocker's knowledge base and support](#).

