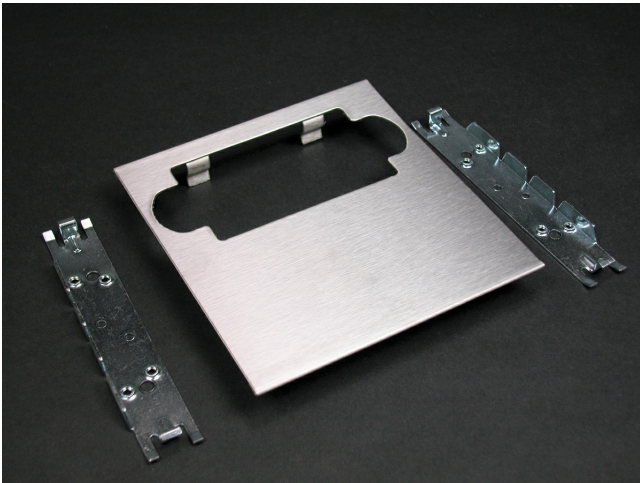




Wiremold
SINGLE DEVICE PLATE
Part No. CS4007C-1R



The versatile 4000® Series Raceway in stainless steel has the unique combination of strength and beauty. This not only makes stainless steel raceway highly functional, but also an attractive design element. Ideal for installations where atmospheric corrosives or acidic cleaning solvents make rust a particular concern, S4000 Series Raceway provides all the benefits of the industry-standard Steel 4000 Series Raceway. The smooth brushed finish provides a sleek, polished look to compliment contemporary, upscale applications.

Features & Benefits

For horizontal mounting of surge suppression receptacles in S4000 Divided or Undivided Raceway. Also accepts most manufacturers' GFCI large twistlock, and rectangular faced single-gang wiring devices and two-port ACO. Use with commercially available flush plate (not furnished).

Specifications

General Info

Product Line	Wiremold	UPC Number	786776538649
Country Of Origin	United States		

Listing Agencies / 3rd Party Agencies

cULus ListingNumber	E41751	cULus Listed	Yes
---------------------	--------	--------------	-----

Buy American Act Compliance

NAFTA	Yes
-------	-----

Additional Information

RoHS Conformant	Yes
-----------------	-----