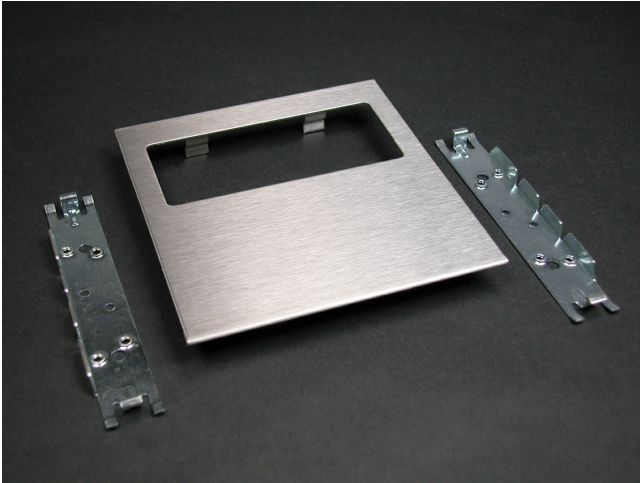




Wiremold
S4000 1GANG DEVICE PLATE ASSEMBLY
Part No. CS4007C-1



The versatile 4000® Series Raceway in stainless steel has the unique combination of strength and beauty. This not only makes stainless steel raceway highly functional, but also an attractive design element. Ideal for installations where atmospheric corrosives or acidic cleaning solvents make rust a particular concern, S4000 Series Raceway provides all the benefits of the industry-standard Steel 4000 Series Raceway. The smooth brushed finish provides a sleek, polished look to compliment contemporary, upscale applications.

Features & Benefits

For horizontal mounting of standard single-gang devices. Accepts industry standard single-gang faceplates for electrical and communication devices..

Specifications

General Info

Product Line	Wiremold	UPC Number	786776538632
Country Of Origin	United States		

Listing Agencies / 3rd Party Agencies

cULus ListingNumber	E41751	cULus Listed	Yes
---------------------	--------	--------------	-----

Buy American Act Compliance

NAFTA	Yes
-------	-----

Additional Information

RoHS Conformant	Yes
-----------------	-----