

# FL-1550 FLOOR BOX

# FSR

## Metal Products Group

FL-1550



## DESCRIPTION

The FL-1550 floor box provides a practical solution for power, audio and video cable termination and connection. This versatile floor box is designed for many applications including wood stage and computer floors. Its dual-door cover design allows full access when making connections, yet only leaves a small cable opening during use. The cover is manufactured from 1/8" steel plate, painted with black sandtex paint.

The FL-1550 innovation continues to a transformable box bottom. The internal bracketry can be arranged to provide numerous options for both high and low voltage applications using the two included gap fill and gang divider plates. (See illustration showing gang possibilities on reverse side). Additionally, the removable gang divider plate makes passing cables through the compartments and providing AC power isolation a snap. All supplied plates can easily be reconfigured at any time.

The FL-1550 box is a one piece, all welded design. The cover is manufactured from 1/8" steel plate. The rugged box has ten knockouts; four on the rear, two on the sides and four on the bottom. This makes for an extremely sturdy and easily installed box. The insert plate accepts standard gang plates that can hold a variety of connector arrangements making just about any cabling / connector scenario possible.

## SPECIFICATIONS

Size:	Top 13½" x 9½" x ¾"
	Box 11¾" x 8" x 6"
Weight:	13 lbs.
Knockouts: Rear:	(2) 1", 1¼", or 1½" concentric (2) ¾"
	Bottom: (2) 1", 1¼", or 1½" concentric (2) ¾"
	R/L Sides: (2) 1" or 1¼" concentric
Finish:	Black Sandtex

## APPLICATIONS

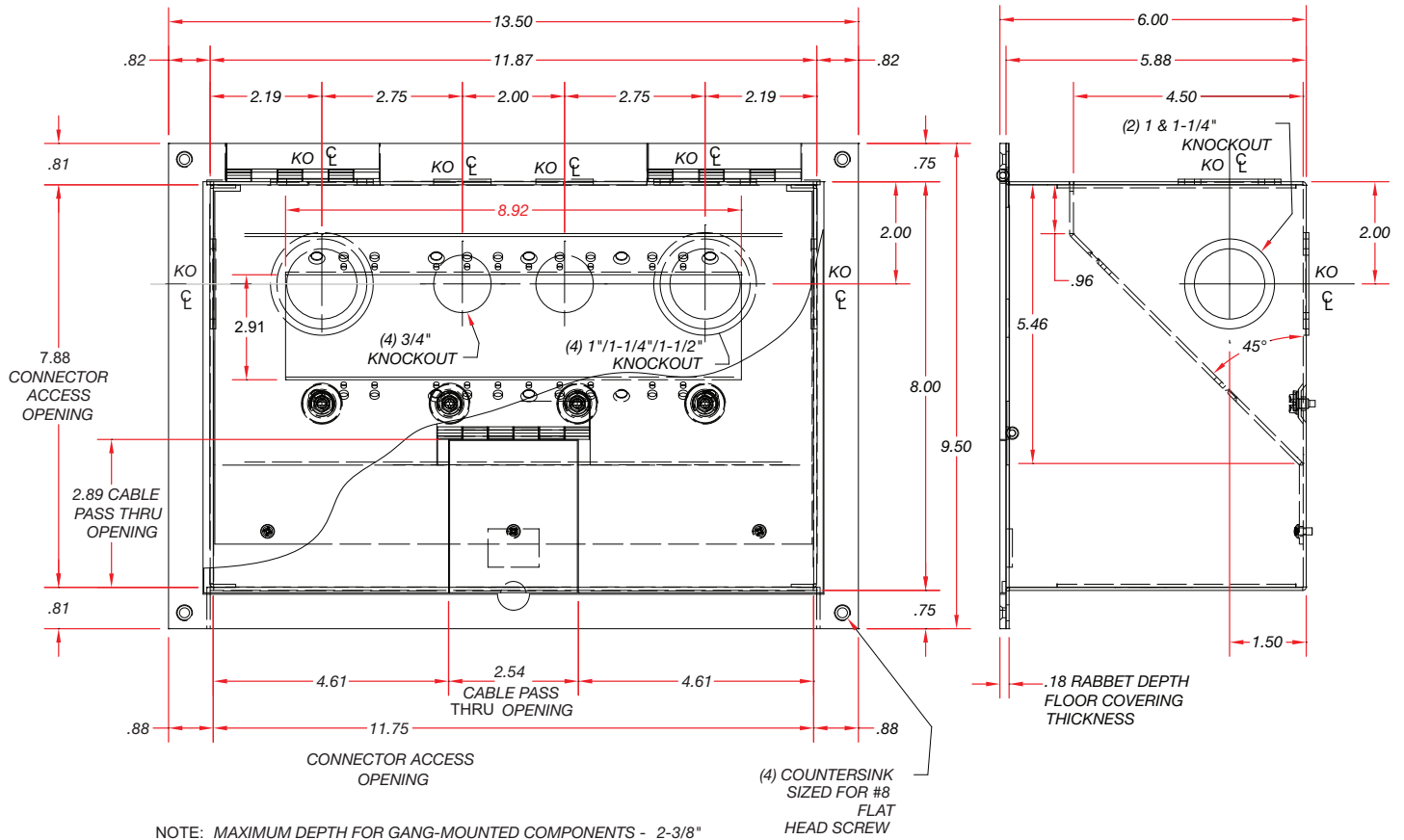
- Hotels
- Conference Centers
- Airports
- Arenas
- Stadiums
- Residential
- Theme parks
- Houses of Worship
- Schools
- TV & Broadcast Media
- Restaurants

## FSR Inc.

244 Bergen Boulevard, Woodland Park, NJ 07424  
Phone: 973.998.2300 · Fax: 973.785.4207  
Web: www.fsrinc.com · E-mail: sales@fsrinc.com  
Toll Free: 1-800-332-FSR1

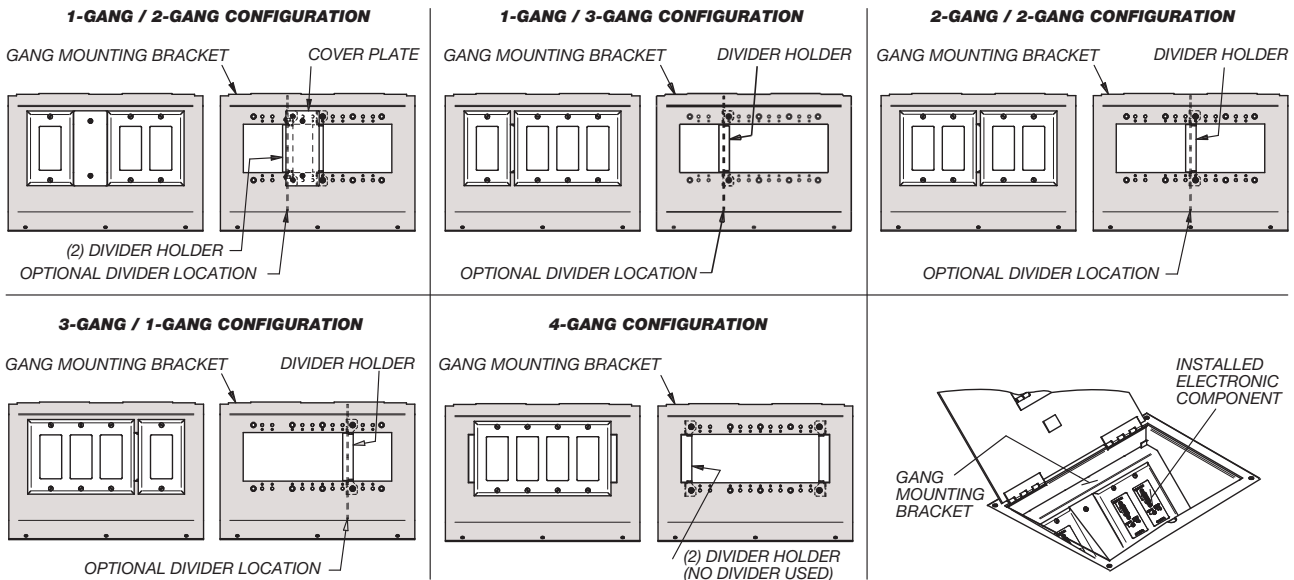
LIT1631A

# DIMENSIONS



# GANG MOUNTING BRACKET CONFIGURATIONS

One divider plate included. Decora Wall Plates shown as reference and are not included.



Specifications are subject to change without notice.

## FSR Inc.

244 Bergen Boulevard, Woodland Park, NJ 07424  
 Phone: 973.998.2300 · Fax: 973.785.4207

Web: www.fsrinc.com · E-mail: sales@fsrinc.com LIT1631A