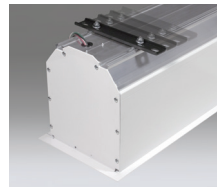


# ELECTRIC Access XL E

FREE-HANGING, CEILING- RECESSED



■ Larger venues—such as ballrooms, conference centers, or university classrooms—benefit from the larger projection screen sizes available in the ceiling-recessed Access XL E electric projection screen. The bottom closure panel provides access to all components for easier service and maintenance. Installation of the case during the initial phase of construction eliminates job site damage, allowing for installation of the screen at a later time.

THIS SCREEN IS FREE-HANGING  
Free-hanging, fiberglass-backed projection screen maintains flatness thanks to the weight of the screen and bottom dowel.

## FEATURES

- Black drop standard, depending on screen size. Extra drop above image area available upon request.
- Adjustable or removable hoisting brackets included for easy lifting during installation.
- Sliding brackets on top of the case allow for adjustments for mounting.
- Sliding brackets inside case accommodate different size screens.
- Includes a 110V, 3-position switch (standard).
- White case standard, black available upon request.



## OPTIONS

- OptiView™ Matt White XT1000E.
- Quiet, low voltage motors and 220V options are available.

## WARRANTY

[draperinc.com/warranty.aspx](http://draperinc.com/warranty.aspx)

## SUPPORTING DOCUMENTS

All instructions, technical drawings and other supporting documents are located at: [draperinc.com/documents.aspx](http://draperinc.com/documents.aspx)

## SIZES

- **Case dimensions** 10 1/8" high x 9 7/16" deep (26 cm x 24 cm), including trim flange. Built-in controls may increase case length. Mounting brackets may add to case dimensions.
- **Maximum image width** up to 20' (610 cm) wide, depending on surface.
- 16:10 FORMAT: from 255" to 278" (648 cm to 706 cm) dia.
- 16:9 FORMAT: from 248" to 270" (630 cm to 686 cm) dia.
- 4:3 NTSC/PAL Format: from 250" to 295" (635 cm to 749 cm) dia.
- AV Format: from 16' x 16' to 20' x 20' (490 cm x 490 cm to 610 cm x 610 cm) viewing area.
- Custom sizes available.

For more information on this product visit: [draperinc.com/projectionscreens/electricscreens.aspx](http://draperinc.com/projectionscreens/electricscreens.aspx)