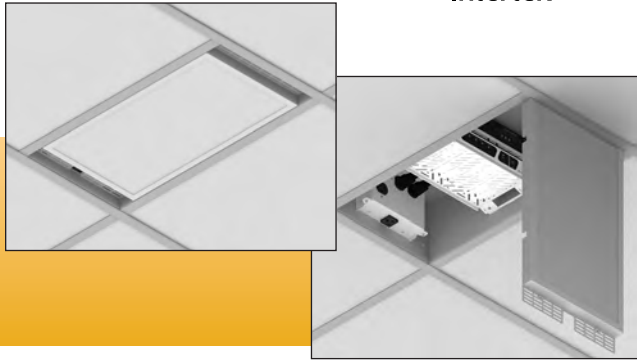


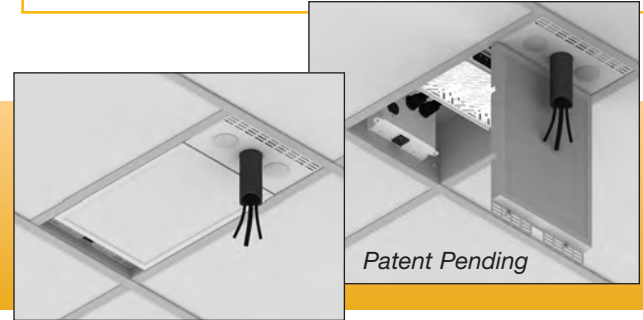
CB-12 SERIES CEILING BOXES



FSR

Metal Products Group

CB-12 Series



DESCRIPTION

FSR is providing solutions for your ceilings! Eliminate those unsightly equipment boxes hanging off the projector poles or mounted to your walls ruining the architect's design. These enclosures allow you to conceal your equipment neatly out of site behind a hidden door that allows you to insert matching ceiling tiles. Select from two size ceiling enclosures and numerous options to fit your application. A white rim style door that you insert the ceiling tile into for a matching look is included.

CB-12 – CEILING ENCLOSURE

This 1'x2' enclosure provides an external AC receptacle on the ceiling surface, four (two duplex) additional un-switched AC receptacles inside the enclosure, two shelves (Maximum Load per shelf of 20 lbs each) to mount two half-rack devices for AV equipment and knockouts to allow wiring. An optional fan kit as well as a variety of mounting kits are available.

CB-12P – CEILING ENCLOSURE with Projector Pole Mount

Same as above with the addition of an industry standard 1½" NPT fitting to hang up to a 50 lbs. projector (including mount), while also supporting a maximum load per shelf of 20 lbs each. This female pipe fitting can be located in multiple positions to optimize projector placement.

SG-120HW - Type 1 Surge Protective Device

The optional SG-120HW is a UL Listed 1449 "Type 1 Surge Protective Device" used to protect branch circuits against damage from electrical transients occurring on the AC line. It provides protection against transients in all 3 modes; Line to Line, Line to Neutral, and Neutral to Ground. A diagnostic LED indicates ground presence, system power and that surge protection is active. (See ordering table)

MOUNTING KIT OPTIONS (for all models):

The **CB-MNT1** cable mounting kit attaches to the four integral mounting tabs attached to the ceiling box exterior. The kit includes four 100" stainless steel cables and four Kwikloc cable adjusters.

The **CB-THRD** threaded rod mounting kit accepts 1/4" and 3/8" threaded rod and includes four hanger brackets that mount to the ceiling box with included 1/4-20 hardware.

APPLICATIONS

Anywhere a Projector or Display is ceiling mounted

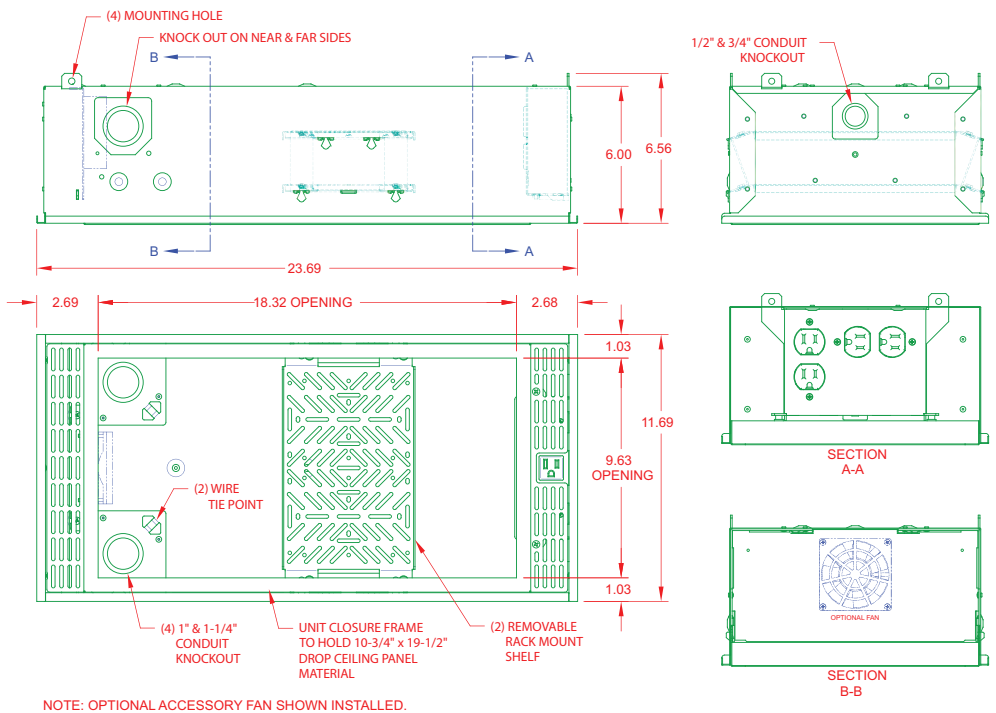
- Conference centers
- Schools
- General Meeting Facilities
- Training Facilities
- Airports
- Museums

FSR Inc.

244 Bergen Boulevard, Woodland Park, NJ 07424
Phone: 973.998.2300 · Fax: 973.785.4207
Web: www.fsrinc.com · E-mail: sales@fsrinc.com
Toll Free: 1-800-332-FSR1

LIT1296K

CB-12 SERIES DIMENSIONS



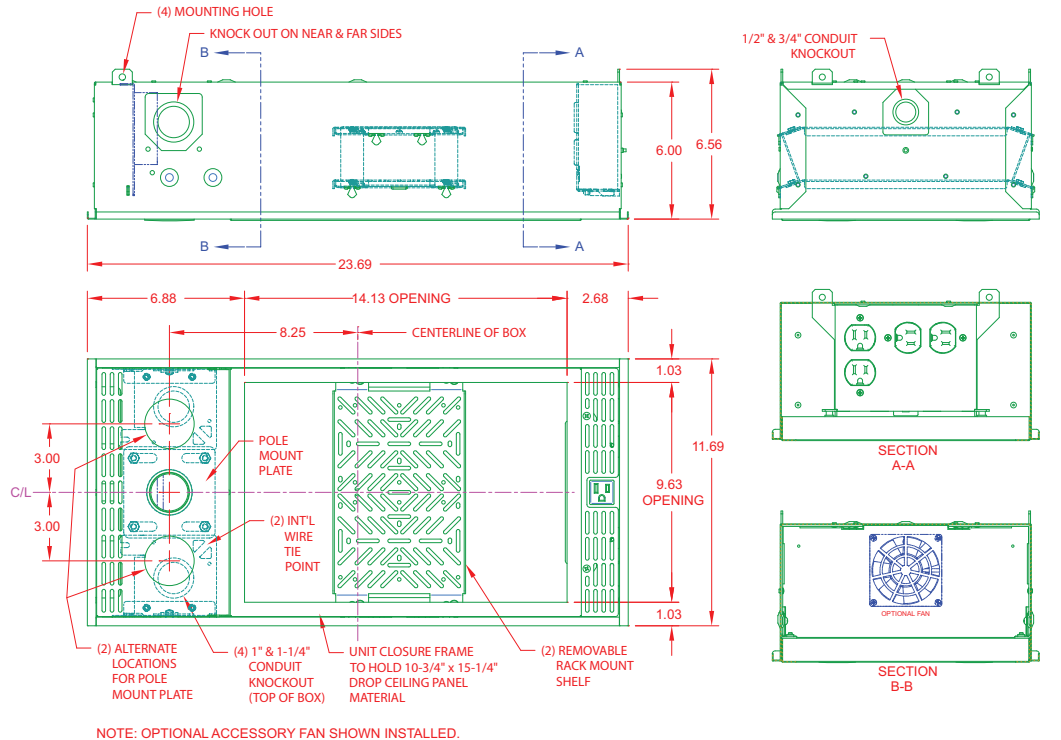
NOTE: OPTIONAL ACCESSORY FAN SHOWN INSTALLED.



Product weight:
12.35 lbs
Shipping weight:
15.70 lbs.

NOTE: For use with the common "T" grid drop ceiling systems, not compatible with all drop ceiling systems.

CB-12P SERIES DIMENSIONS



NOTE: OPTIONAL ACCESSORY FAN SHOWN INSTALLED.



Product weight:
12.35 lbs
Shipping weight:
15.70 lbs.

NOTE: For use with the common "T" grid drop ceiling systems, not compatible with all drop ceiling systems

AGENCY APPROVALS

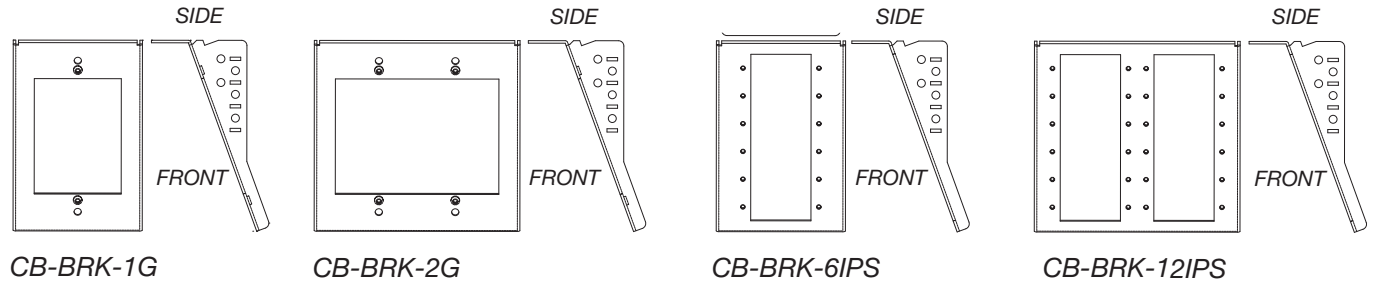
PLENUM RATED: Conforms to UL 2043: UL Standard for Safety Fire Test for Heat and Visible Smoke Release for Discrete Products and Their Accessories Installed in Air-Handling Spaces.

SAFETY RATED: Conforms to: UL 60950-1: Information Technology Equipment - Safety and certified to CSA 22.2 60950-1: Safety of Information Technology Equipment.

CB-12 CEILING BOX ORDERING INFORMATION

MODEL	DESCRIPTION	
CB-12	1'x2' ceiling box with 4 internal + 1 external AC outlet on the ceiling surface	
CB-12P	1'x2' ceiling box with one 1½" NPT female fitting to accept projector pole mounting and 4 internal + 1 external AC outlet on the ceiling surface	
CB-12FAN	Fan kit for CB-12 / 12P 1'x2' ceiling box	
CB-MNT1	Mounting kit including four 100" cables and four KWIKLOCS™	
CB-BRK-1G	1 Gang Ceiling Box Installation Bracket	Brackets can be "TEK" screwed to internal equipment areas of CB boxes as needed.
CB-BRK-2G	2 Gang Ceiling Box Installation Bracket	
CB-BRK-6IPS	6 IPS Ceiling Box Installation Bracket	
CB-BRK-12IPS	12 IPS Ceiling Box Installation Bracket	
CB-12-SR	CB-12 Drywall Frame and Ceiling Box Kit	
CB-22-SR	CB-22 Drywall Frame and Ceiling Box Kit	
SG-120HW	Surge Protective Device Type 1 (UL/cUL Listed)	

OPTIONAL INTERNAL BRACKETS

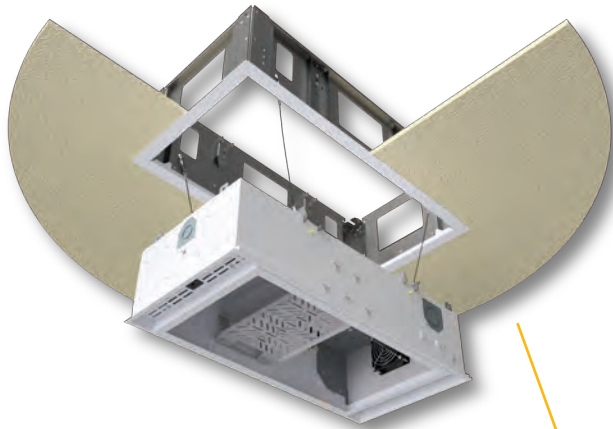


Doing a Large Project? Quantity Pricing Is Available.

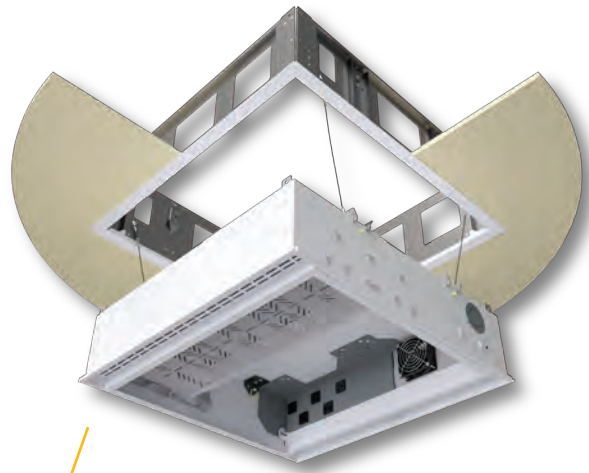
TESTED AND CERTIFIED: All weight capacity specifications tested and certified to a minimum of a 5X safety factor by Tektronix, Inc. an independent testing laboratory.

ETL approved and recognized for use in the State of California. Division of State Architect (DSA) suspension approvals must be sought by contractor prior to certain installations.

CB SERIES DRYWALL FRAME & CEILING BOX KITS



CB-12-SR Kit
(shown in service position)



CB-22-SR Kit
(shown in service position)

**Now available
as kits.**

See spec sheet *CB Series Drywall Frame & Ceiling Box Kit (LIT1585)* for more details.



244 Bergen Boulevard, Woodland Park, NJ 07424
Phone: 973.998.2300 · Fax: 973.785.4207
Web: www.fsrinc.com · E-mail: sales@fsrinc.com

