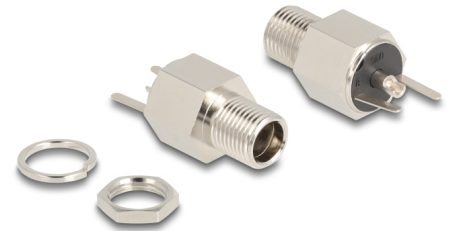


# Delock Connector DC 5.5 x 2.5 mm female bulkhead soldering version - Hexagon 20 V / 9 A

## Description

This DC female bulkhead by Delock can be installed or cabled in a housing or a device in order to supply it with power.



DC 5.5 x 2.5 mm

20 V / 9 A

**Item no. 90188**

EAN: 4043619901883

Country of origin: Taiwan,  
Republic of China

Package: Zip poly bag

## Technical details

- Connectors:
  - 1 x DC 5.5 x 2.5 x 12.0 mm female
  - 3 x solder connection
- Suitable for DC pin length: 9.5 mm / 12 mm
- Operating voltage: 20 V DC
- Current: max. 9 A
- Hexagon base
- Thread type: M8\*P0.75
- Mounting depth: ca. 17.1 mm
- Visible height when installed: ca. 8.5 mm

## Specification of power connector

- Dimensions:
  - inside:  $\varnothing$  ca. 2.5 mm
  - outside:  $\varnothing$  ca. 5.5 mm
  - depth: ca. 12.0 mm

---

## Package content

- DC female bulkhead

## Interface

connector:	1 x DC 5.5 x 2.5 mm jack bulkhead
------------	-----------------------------------

## Physical characteristics

Pin finishing:	nickel-plated
----------------	---------------